

REVIEWED BY
MTMC

J. Hoelling MTCCTEA

DATE *5 Apr 1982*

MLRS

MINIMUM REQUIREMENTS FOR THE HANDLING, STOWAGE, AND BRACING ABOARD SHIPS OF THE MULTIPLE LAUNCH ROCKET SYSTEM SELF PROPELLED LAUNCHER LOADER

REVISIONS				DRAFTSMAN <i>LN</i>	PROJ ENG <i>RSH/MLW</i>	DRGNI-8SDP <i>Hande 10/2</i>
				CHECKER <i>GRG</i>	LOG ENGINE OFFICE	
				APPROVED, U.S. ARMY SIGNAL COMMAND		
				<i>11/2 10/11/82</i>		
				APPROVED BY ORDER OF COMMANDING GENERAL, U.S. ARMY MATERIEL DEVELOPMENT AND READINESS COMMAND (DARCOM) <i>John L. Byrall</i> U.S. ARMY DEFENSE AMMUNITION CENTER AND SCHOOL		
				U.S. ARMY DARCOM DRAWING		
				MAY 1982		
				CLASS	DIVISION	DRAWING
				19	48	7277
						FILE
						GSE 18 RS I

DO NOT SCALE

NOTES

GENERAL:

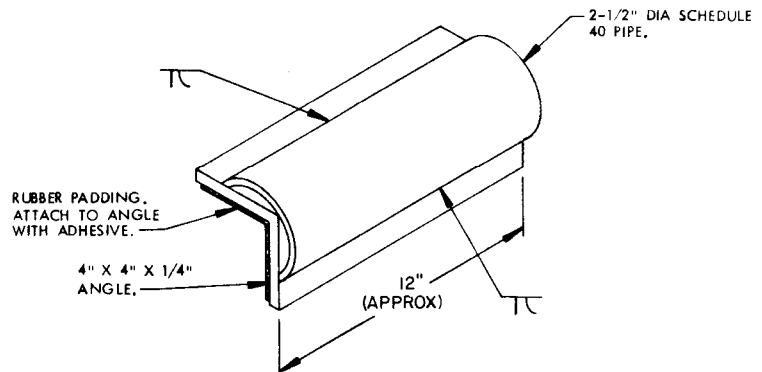
- A. THIS DOCUMENT HAS BEEN PREPARED AND ISSUED IN ACCORDANCE WITH AR 740-1.
- B. THIS DRAWING DEPICTS MINIMUM PROCEDURES APPLICABLE TO THE HANDLING, STOWAGE AND BRACING ABOARD SHIPS OF THE MULTIPLE LAUNCH ROCKET SYSTEM SELF PROPELLED LAUNCHER LOADER.
- C. THE LAUNCHER LOADER SHOWN HEREIN MAY BE STOWED IN THE SAME HOLD OR TWEEN DECK WITH OTHER TYPES OF CARGO. HOWEVER, IF THIS ITEM IS TO BE STOWED ADJACENT TO DANGEROUS ARTICLES, PERTINENT REQUIREMENTS OF TITLE 46 CODE OF FEDERAL REGULATIONS, 146.29, MUST BE APPLIED.
- D. LADING DATA:
- DIMENSIONS-----22'-10-1/2" LONG X 9'-9" WIDE X 8'-6" HIGH,
GROSS WEIGHT-----42,772 POUNDS (APPROX)
CUBE-----1,896 CU.FT. (APPROX)

HANDLING:

- A. PERTINENT PROVISIONS OF TITLE 46/49 CODE OF FEDERAL REGULATIONS APPLY.
- B. HANDLING OF THE LAUNCHER LOADER SHOULD BE ACCOMPLISHED BY USING THE LIFT POINTS DESIGNATED HEREIN.
- C. THE HANDLING SLING SHALL BE OF A DESIGN AND CONFIGURATION TO LIFT THIS ITEM IN SUCH A MANNER THAT THE CABLE LEGS DO NOT APPLY EXCESSIVE PRESSURE AGAINST THE FRAMING, SUPERSTRUCTURE OR OTHER MEMBERS OF THE ITEM, WHICH MAY DAMAGE THE ITEM. USE CABLE PROTECTORS AT REAR OF ITEM.
- D. EACH LEG OF THE HANDLING SLING MUST BE SECURELY ATTACHED TO A LIFT POINT PRIOR TO LIFTING.
- E. ALTHOUGH DESIRABLE, A LEVEL LIFT IS NOT MANDATORY. THE APPROXIMATE CENTER OF GRAVITY OF THIS ITEM IS SHOWN TO ASSIST IN DETERMINING CABLE LENGTHS TO ASSURE A SAFE LIFT.

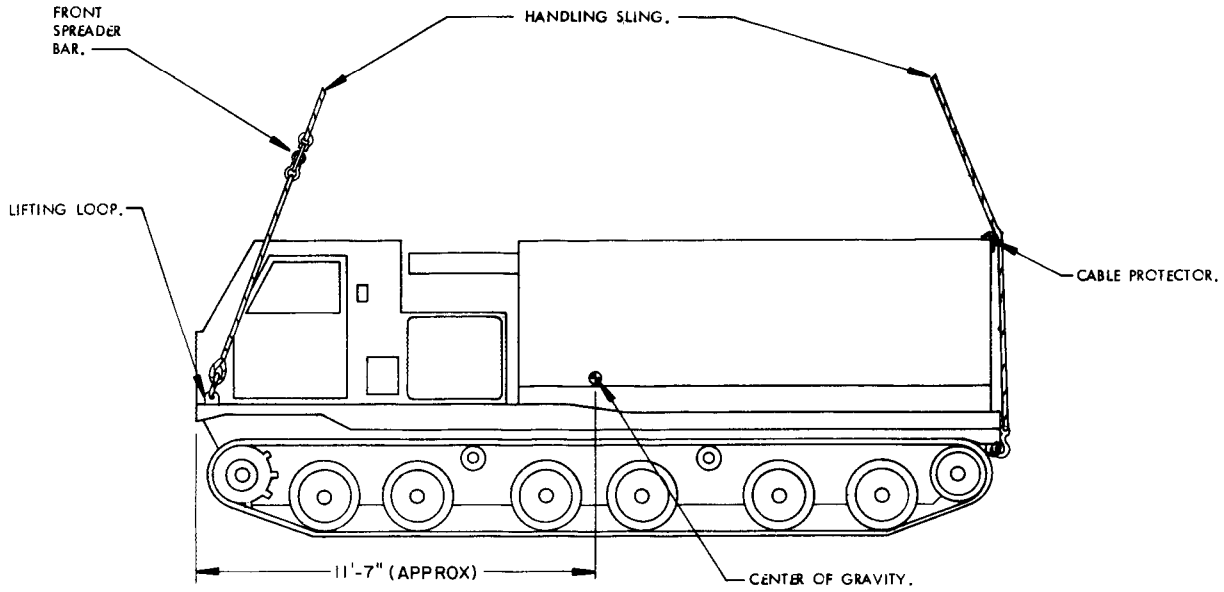
STOWAGE AND BRACING:

- A. WHEN STOWING THE LAUNCHER LOADER WITHIN THE HOLD OR TWEEN DECK, BRACING BETWEEN VEHICLES OR BETWEEN A VEHICLE AND OTHER CARGO SHALL ONLY BE APPLIED AGAINST THE UNDER CARRIAGE OF THE VEHICLE. ALSO, OTHER CARGO ITEMS MUST NOT BE STACKED ON TOP OF OR AGAINST ANY OTHER PART OF THE LAUNCHER LOADER THAN AS IDENTIFIED IMMEDIATELY ABOVE.
- B. SPECIES, GRADE AND SIZE OF LUMBER TO BE USED WILL COMPLY WITH REQUIREMENTS OF CURRENT SHIPWRIGHT-CARPENTRY AND RELATED SERVICES CONTRACTS. BRACING METHODS AND LUMBER SIZES DEPICTED IN THIS DRAWING ARE CONSIDERED MINIMUM AND ARE NOT INTENDED TO CONFLICT WITH CONTRACT REQUIREMENTS.
- C. THE LAUNCHER LOADER IS EQUIPPED WITH TIEDOWN DEVICES AS SHOWN HEREIN AND ARE SYMMETRICAL ABOUT THE LONGITUDINAL LINE OF CENTER. THE ITEM SHOULD BE SECURED FORE AND AFT TO SHIP TIEDOWN POINTS USING A MINIMUM OF TWO SYMMETRICALLY LOCATED TIEDOWN DEVICES IN EACH DIRECTION AS TYPICALLY SHOWN WITHIN THIS DOCUMENT.
- D. A TYPICAL TIEDOWN PROCEDURE IS SHOWN AND DEPICTS THE PREFERRED METHOD OF USING CABLES AND TURNBUCKLES. IF USED, A TURNBUCKLE MUST BE OF A SIZE EQUAL IN STRENGTH TO THE MINIMUM SIZE CABLE REQUIRED TO SECURE THE ITEM. IN LIEU OF CABLES AND TURNBUCKLES, SECUREMENT MAY BE ACCOMPLISHED BY OTHER ACCEPTED METHODS.



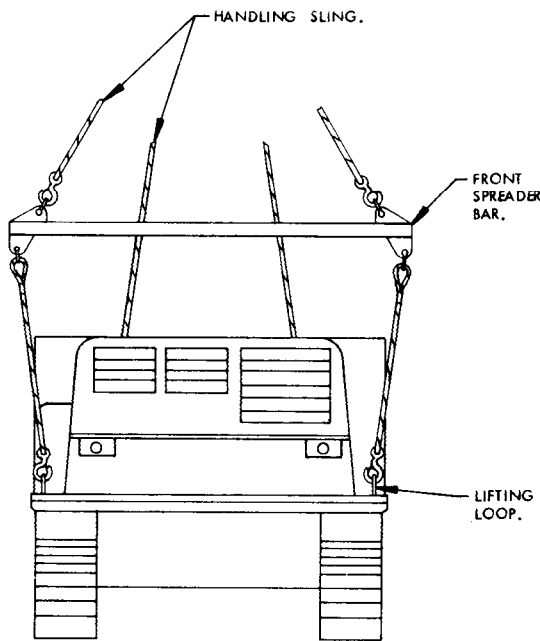
CABLE PROTECTOR

A CABLE PROTECTOR AS SHOWN BY THE ABOVE DETAIL HAS BEEN SUCCESSFULLY USED IN SLINGING THE LAUNCHER LOADER. IT OR A SIMILAR TYPE PROTECTOR MUST BE POSITIONED AT THE UPPER REAR OF THE ITEM SO AS TO PREVENT DAMAGE TO BOTH THE ITEM AND THE HANDLING SLING.

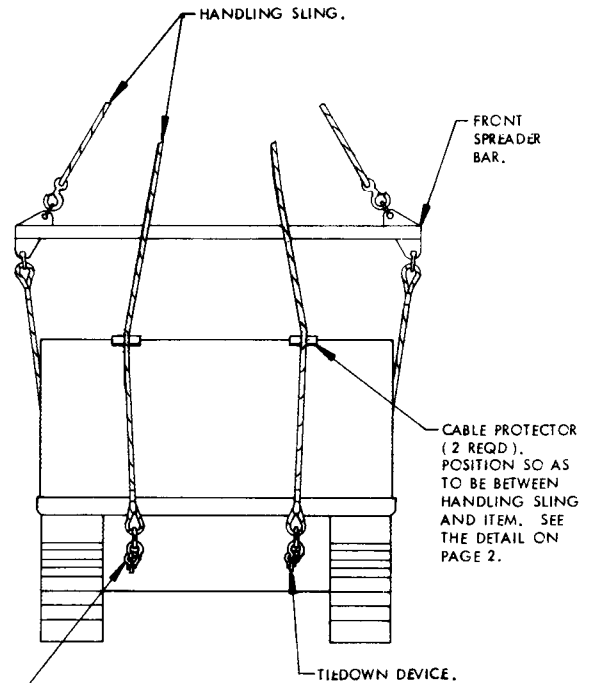


ELEVATION VIEW

PRECAUTIONARY PROVISIONS FOR HANDLING, STOWAGE AND BRACING AS SPECIFIED IN THE NOTES ON PAGE 2 MUST BE OBSERVED.

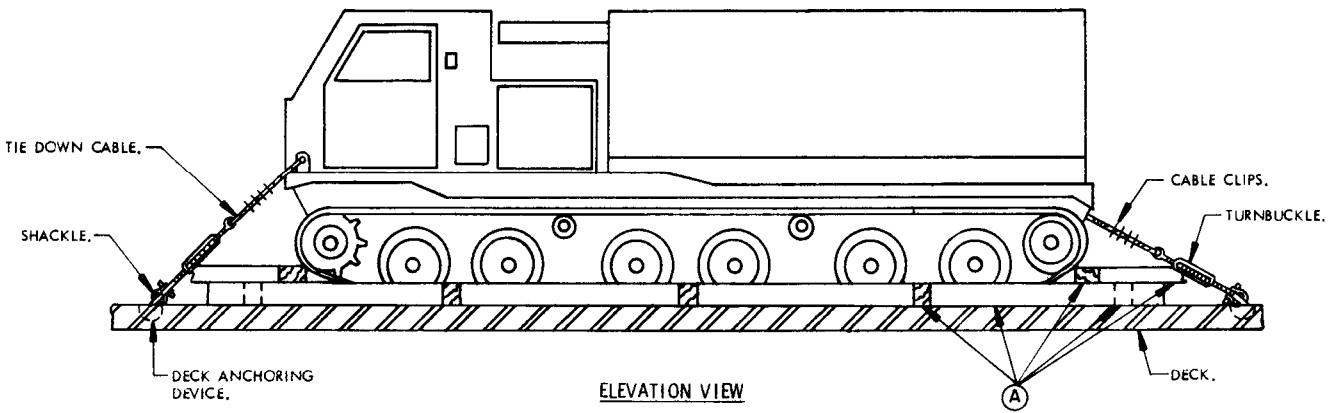
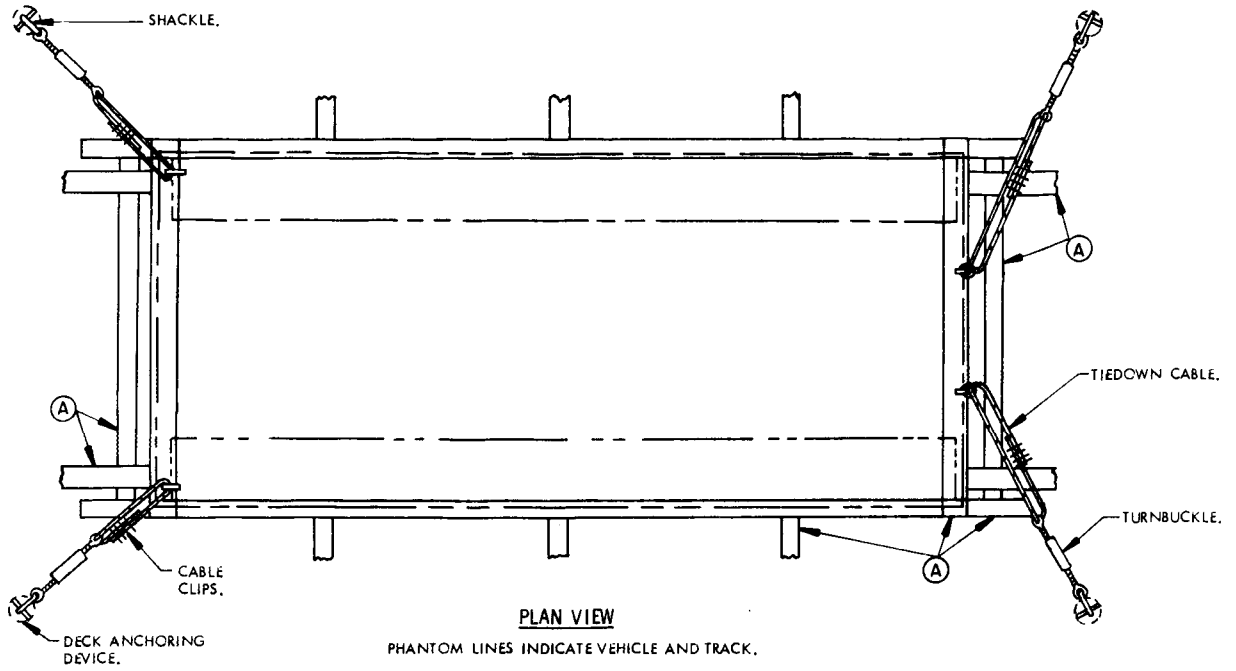


FRONT VIEW

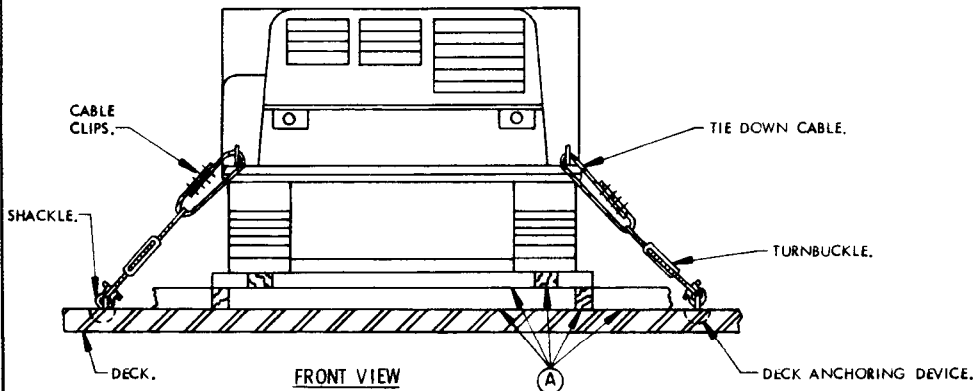


REAR VIEW

TWO (2) SHACKLES REQUIRED AT EACH TIEDOWN DEVICE AT REAR OF ITEM.



PRECAUTIONARY PROVISIONS FOR HANDLING, STOWAGE AND BRACING AS SPECIFIED IN THE NOTES ON PAGE 2 MUST BE OBSERVED.



MINIMUM LUMBER SIZE	
(A)	6" X 8"