

APPROVED BY
MTMTS

Frank L. Hill

TEA, MTMTS

DATE *17 Oct 1973*

LANCE

MINIMUM REQUIREMENTS FOR THE HANDLING, STOWAGE, AND BRACING ABOARD SHIPS OF PALLETIZED PROPELLANT DRAINING KIT

REVISIONS				DRAFTSMAN	PROJ. ENG.	APP. ENGR.
				<i>10/17/73</i>	<i>5/2/73</i>	<i>J. Epperson</i>
				CHECKER	LDG. ENGRG. OFFICE	
				APPROVED		
				<i>Wesley P. Gilleland</i>		
				U. S. ARMY MATERIEL COMMAND		
				APPROVED BY <i>Paul S. Barrett</i>		
				U. S. ARMY MATERIEL COMMAND		
				NOVEMBER 1973		
				CLASS	DIVISION	DRAWING
				19	48	7271
						FILE
						GSE 18LC9

DO NOT SCALE

NOTES

GENERAL:

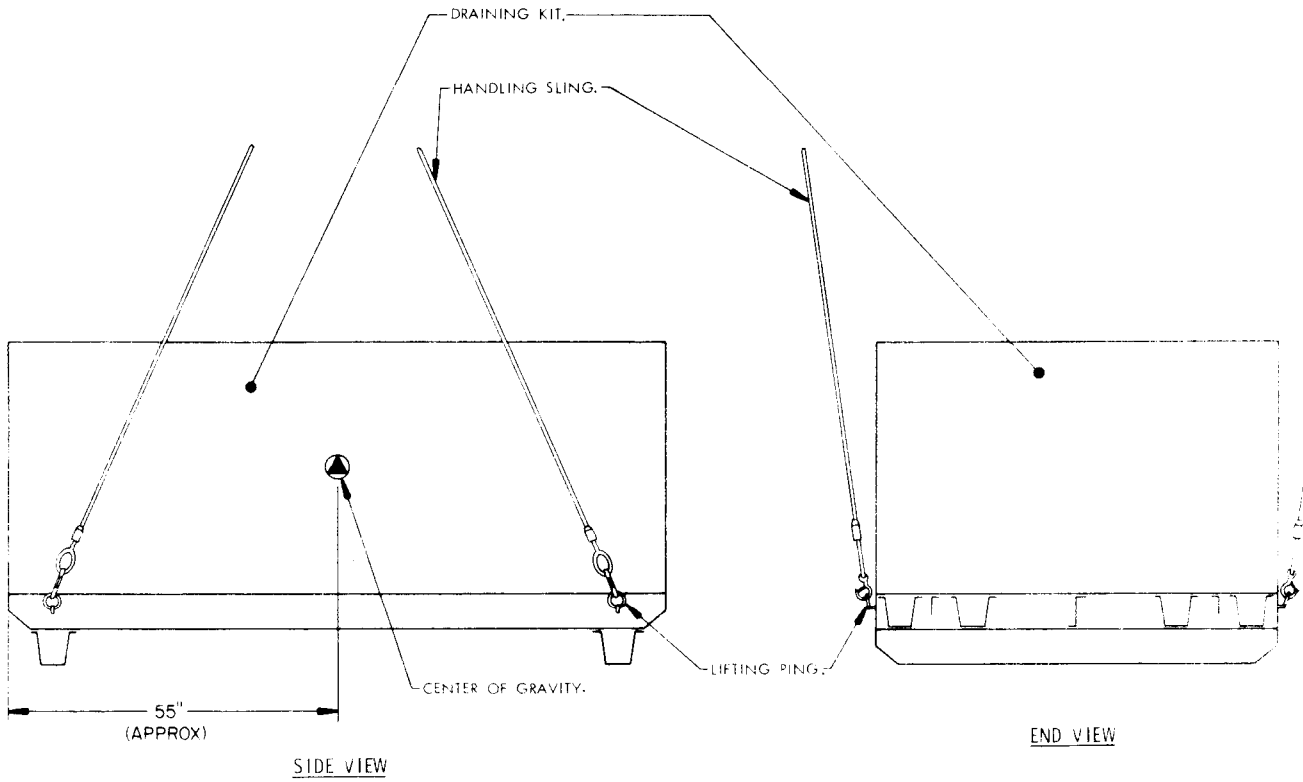
- A. THIS DOCUMENT HAS BEEN PREPARED AND ISSUED IN ACCORDANCE WITH AMCR 740-13.
- B. THIS DRAWING DEPICTS MINIMUM PROCEDURES APPLICABLE TO THE HANDLING, STOWAGE AND BRACING ABOARD SHIPS OF THE PALLETIZED PROPELLANT DRAINING KIT FOR THE LANCE MISSILE SYSTEM.
- C. OTHER TYPES OF CARGO MAY BE STOWED IN THE SAME HOLD OR TWEEN DECK WITH THE DRAINING KIT SHOWN HEREIN.
- D. LADING DATA:
 - ITEM DIMENSIONS-----9'-2" LONG X 5'-10" WIDE X 4'-6" HIGH.
 - GROSS WEIGHT----- 2,660 LBS (APPROX).
 - CUBE -----241 CU. FT.

HANDLING:

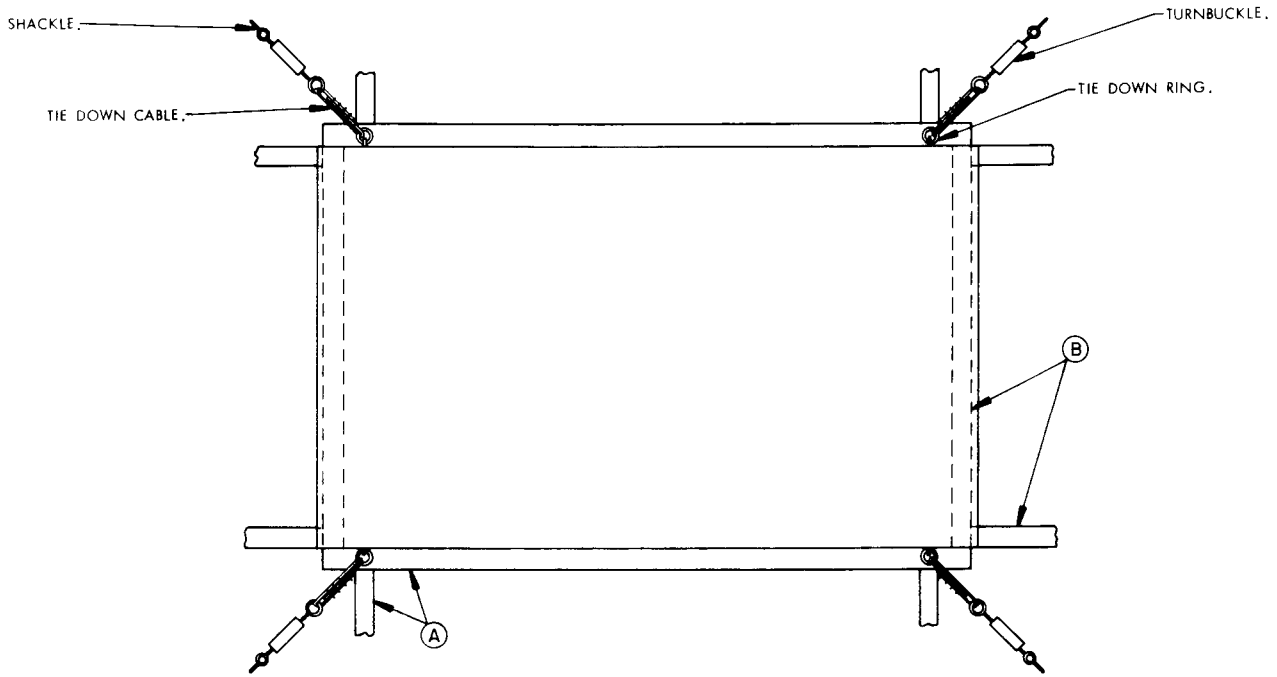
- A. PERTINENT PROVISIONS OF TITLE 46 CODE OF FEDERAL REGULATIONS APPLY.
- B. HANDLING OF THE DRAINING KIT SHOULD BE ACCOMPLISHED BY USING THE LIFT POINTS DESIGNATED HEREIN.
- C. EACH ITEM SHALL BE HANDLED INDIVIDUALLY. STACKING OF ITEMS IS NOT PERMITTED.
- D. THE HANDLING SLING SHALL BE OF A DESIGN AND CONFIGURATION TO LIFT THE ITEM IN SUCH A MANNER THAT THE CABLE LEGS DO NOT APPLY EXCESSIVE PRESSURE WHICH MAY DAMAGE THE ITEM.
- E. ALTHOUGH DESIRABLE, A LEVEL LIFT IS NOT MANDATORY. THE CENTER OF GRAVITY OF THIS ITEM IS SHOWN TO ASSIST IN DETERMINING CABLE LENGTHS TO ASSURE A SAFE LIFT.

STOWAGE AND BRACING:

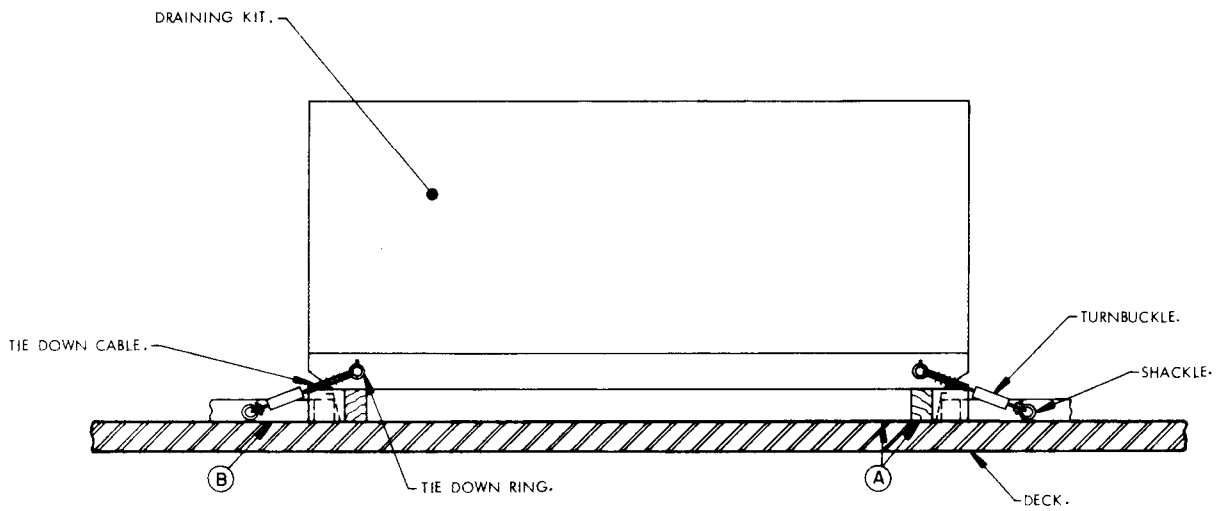
- A. STOWAGE OF THE ITEM IS RESTRICTED TO ONE (1) LAYER HIGH. HOWEVER, OTHER CARGO ITEMS MAY BE OVER-STOWED BY CONSTRUCTING A DUNNAGE FLOOR, WHICH IS INDEPENDENTLY SUPPORTED, ABOVE THE DEPICTED ITEM. CAUTION: OVERSTOWED CARGO MUST NOT CRUSH OR OTHERWISE DAMAGE THE COVER OF THE DRAINING KIT.
- B. SPECIES, GRADE AND SIZE OF LUMBER TO BE USED WILL COMPLY WITH REQUIREMENTS OF CURRENT SHIPWRIGHT-CARPENTRY AND RELATED SERVICES CONTRACTS. BRACING METHODS AND LUMBER SIZES DEPICTED IN THIS DRAWING ARE CONSIDERED MINIMUM AND ARE NOT INTENDED TO CONFLICT WITH CONTRACT REQUIREMENTS.
- C. A TYPICAL TIE DOWN PROCEDURE FOR THE ITEM IS SHOWN ON PAGE 4 AND DEPICTS THE PREFERRED METHOD OF USING CABLES AND TURNBUCKLES. IF USED, A TURNBUCKLE MUST BE OF A SIZE EQUAL IN STRENGTH TO THE MINIMUM SIZE CABLE REQUIRED TO SECURE THE ITEM. IN LIEU OF CABLES AND TURNBUCKLES, SECUREMENT MAY BE ACCOMPLISHED BY OTHER ACCEPTED METHODS.



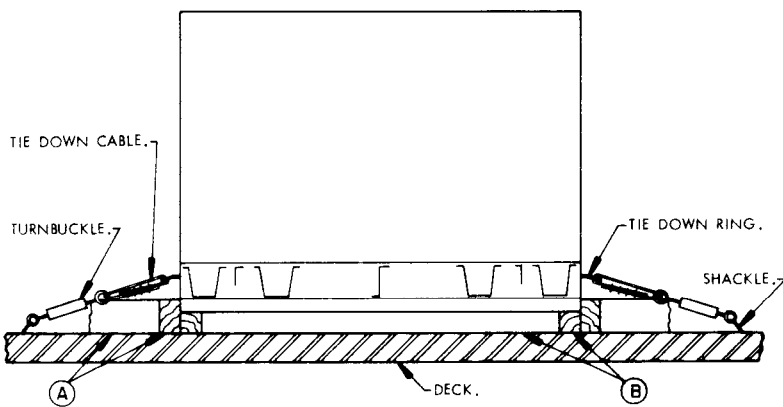
PRECAUTIONARY PROVISIONS FOR HANDLING, STOWAGE AND BRACING AS SPECIFIED IN THE NOTES ON PAGE 2 MUST BE OBSERVED.



PLAN VIEW



SIDE VIEW



END VIEW

MINIMUM LUMBER SIZES	
(A)	4" X 6"
(B)	4" X 4"

PRECAUTIONARY PROVISIONS FOR HANDLING, STOWAGE AND BRACING AS SPECIFIED IN THE NOTES ON PAGE 2 MUST BE OBSERVED.