

APPROVED BY
MTMTS

Frank L. Pina

TEA, MTMTS

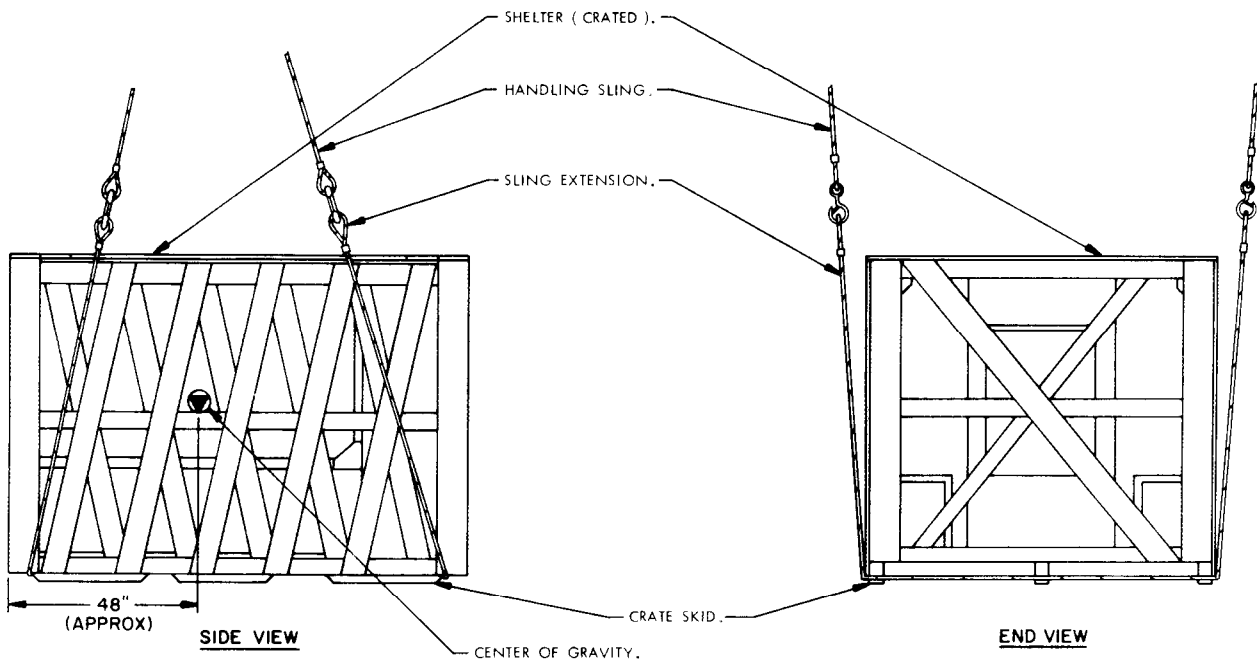
DATE 3 Aug 1973

LANCE

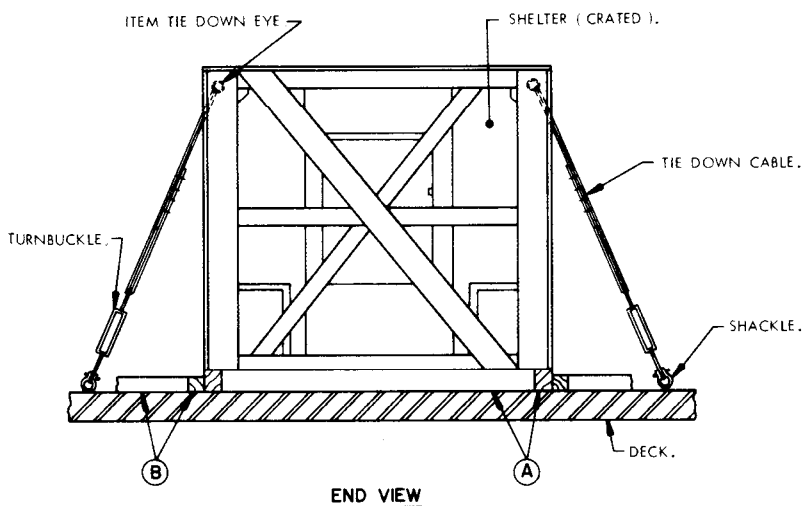
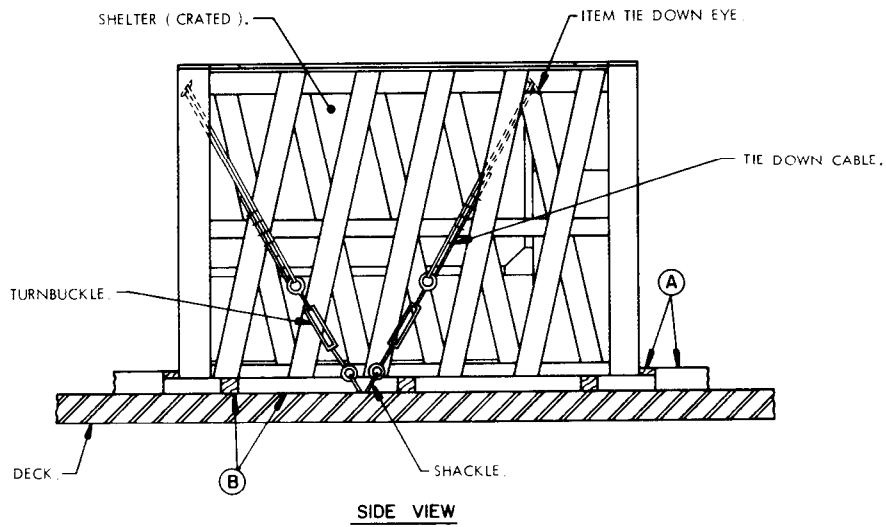
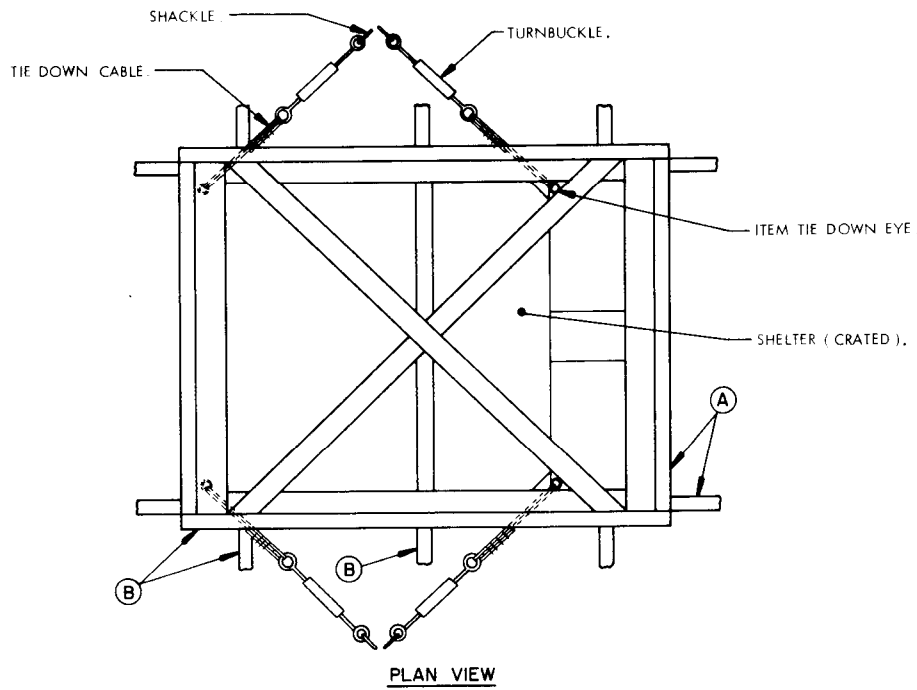
MINIMUM REQUIREMENTS FOR THE HANDLING, STOWAGE, AND BRACING ABOARD SHIPS OF SHELTER, ELECTRICAL EQUIPMENT, MODIFIED S250-G (CRATED)

REVISIONS				DRAFTSMAN <i>S32/AB</i>	PROJ ENG <i>INW/INW</i>	FORN-LOGM <i>Ben</i>	
				CHECKER <i>802/802</i>	LOG ENGR OFFICE <i>Det. 3rd Md</i>	ASST. SQ <i>Med</i>	
				APPROVED <i>Wesley E Gilleland</i> U. S. ARMY MISSILE COMMAND			
				APPROVED BY ORDER OF COMMANDING GENERAL U. S. ARMY MATERIEL COMMAND <i>W. H. Ehinger</i> USAMC AMMO CENTER			
				U. S. ARMY MATERIEL COMMAND			
				AUGUST 1973			
				CLASS	DIVISION	DRAWING	FILE
				19	48	7269	GSE 18LC 8

DO NOT SCALE



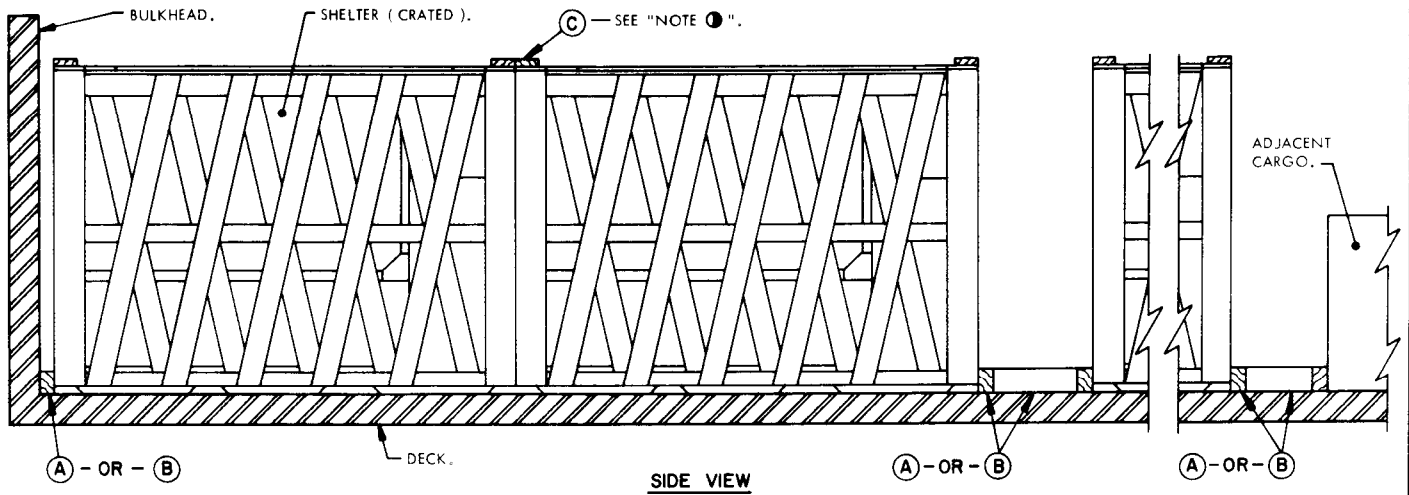
PRECAUTIONARY PROVISIONS FOR HANDLING,
 STOWAGE AND BRACING AS SPECIFIED IN
 THE NOTES ON PAGE 2 MUST BE OBSERVED.



MINIMUM LUMBER SIZES	
(A)	4" X 6"
(B)	4" X 4"

PRECAUTIONARY PROVISIONS FOR HANDLING, STOWAGE AND BRACING AS SPECIFIED IN THE NOTES ON PAGE 2 MUST BE OBSERVED.

← CRATES STOWED LENGTHWISE TO THE SHIP. ADJUST LENGTH OF STOWAGE TO SUIT QUANTITY TO BE SHIPPED. →



SIDE VIEW

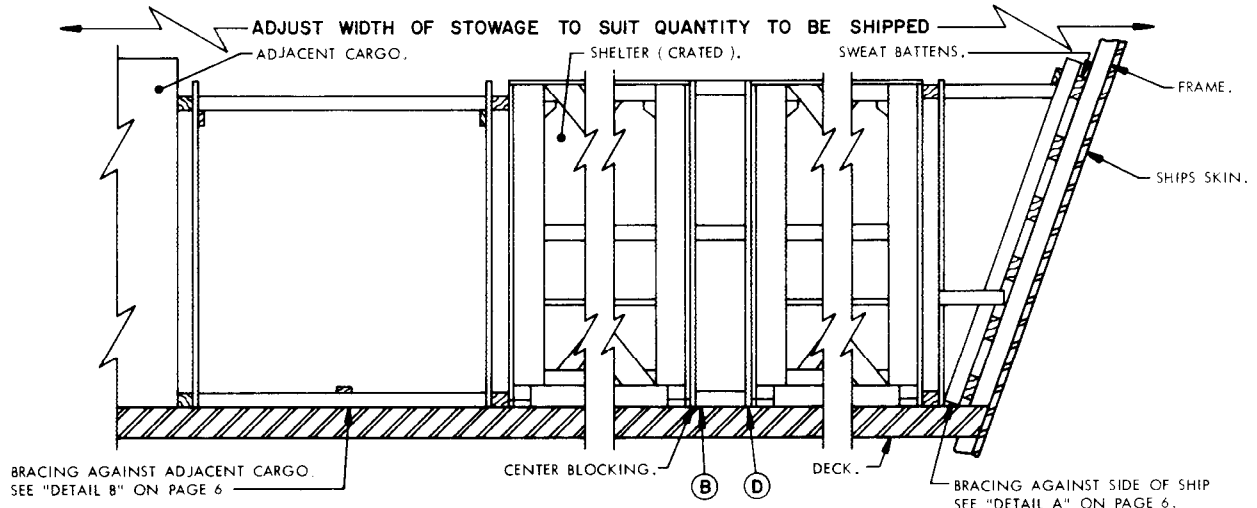
NOTE 1:

PIECE MARKED (C) IS REQUIRED TO SECURE LATERALLY ADJACENT CRATES TOGETHER TO PREVENT LATERAL TIPPING. POSITION ACROSS THE CRATE AT EACH END SO THAT IT EXTENDS ACROSS THE FULL WIDTH OF THE CRATE BEING SECURED AND AT LEAST ONE (1) CRATE ADJACENT THERETO. NAIL PIECE MARKED (C) TO CRATE END WITH APPROPRIATELY SIZED NAILS.

THIS VIEW SHOWS BRACING AGAINST END OF CRATE AND USING FLOOR LINE BRACING MATERIAL (A) (4" X 6", 6" VERTICAL). WHEN BRACING AGAINST CRATE SIDES, USE FLOOR LINE BRACING MATERIAL (B) IN LIEU OF (A) MATERIAL.

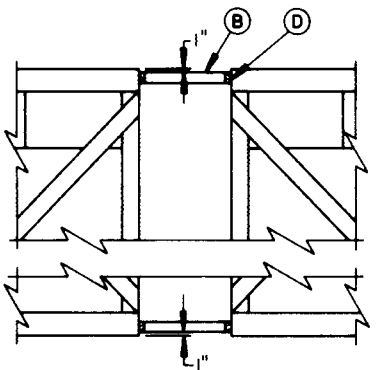
MINIMUM LUMBER SIZES	
(A)	4" X 6"
(B)	4" X 4"
(C)	2" X 6"
(D)	2" X 4"

BRACING METHOD II, W/O CABLE



END VIEW

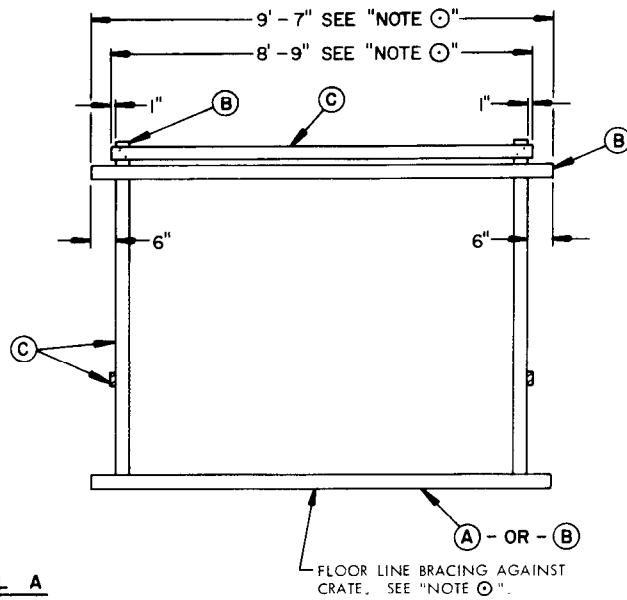
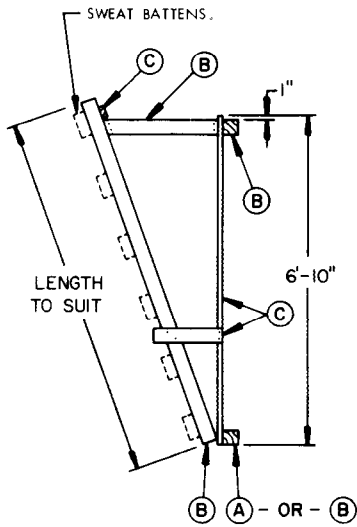
THE "END VIEW" SHOWS BRACING AGAINST SIDE OF CRATE AND USING FLOOR LINE BRACING MATERIAL (B) (4" X 4"). WHEN BRACING AGAINST CRATE ENDS, USE FLOOR LINE BRACING MATERIAL (A) (4" X 6", 6" VERTICAL) IN LIEU OF (B) MATERIAL.



**PLAN VIEW
CENTER BLOCKING**

PRECAUTIONARY PROVISIONS FOR HANDLING, STOWAGE AND BRACING AS SPECIFIED IN THE NOTES ON PAGE 2 MUST BE OBSERVED.

BRACING METHOD III, W/O CABLE

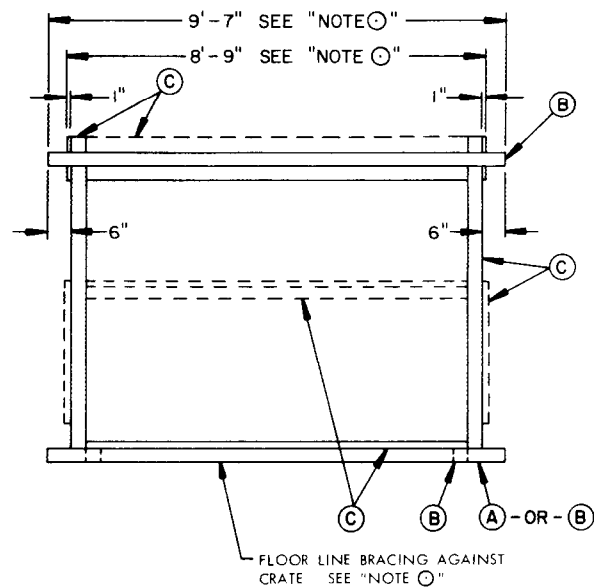
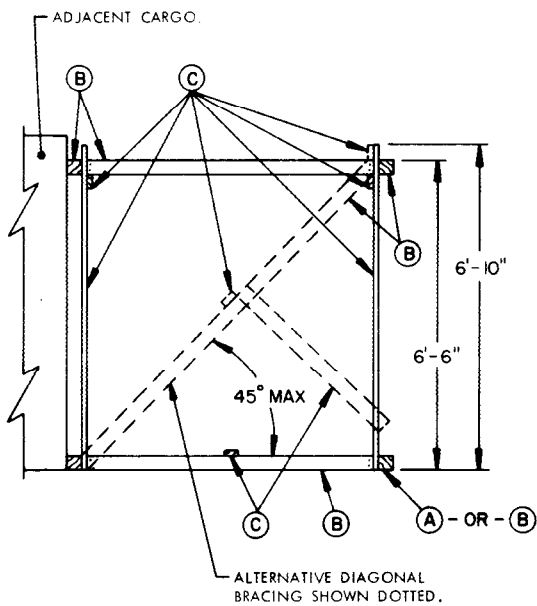


DETAIL A
SUGGESTED BRACING AT SIDE OF SHIP.

NOTE Ⓞ:

DIMENSIONS SHOWN ARE FOR BRACING AGAINST SIDE OF CRATE AND USING FLOOR LINE BRACING MATERIAL (B). WHEN BRACING AGAINST CRATE ENDS, CHANGE DIMENSIONS OF THE BRACING ASSEMBLY, USE 7'-4" IN LIEU OF 9'-7" AND 6'-6" IN LIEU OF 8'-9". ALSO USE FLOOR LINE BRACING MATERIAL (A) (4" X 6", 6" VERTICAL) AGAINST CRATE ENDS IN LIEU OF (B) MATERIAL.

MINIMUM LUMBER SIZES	
(A)	4" X 6"
(B)	4" X 4"
(C)	2" X 4"



DETAIL B
SUGGESTED BRACING AGAINST ADJACENT CARGO.

PRECAUTIONARY PROVISIONS FOR HANDLING, STORAGE AND BRACING AS SPECIFIED IN THE NOTES ON PAGE 2 MUST BE OBSERVED.