

NOTES

GENERAL:

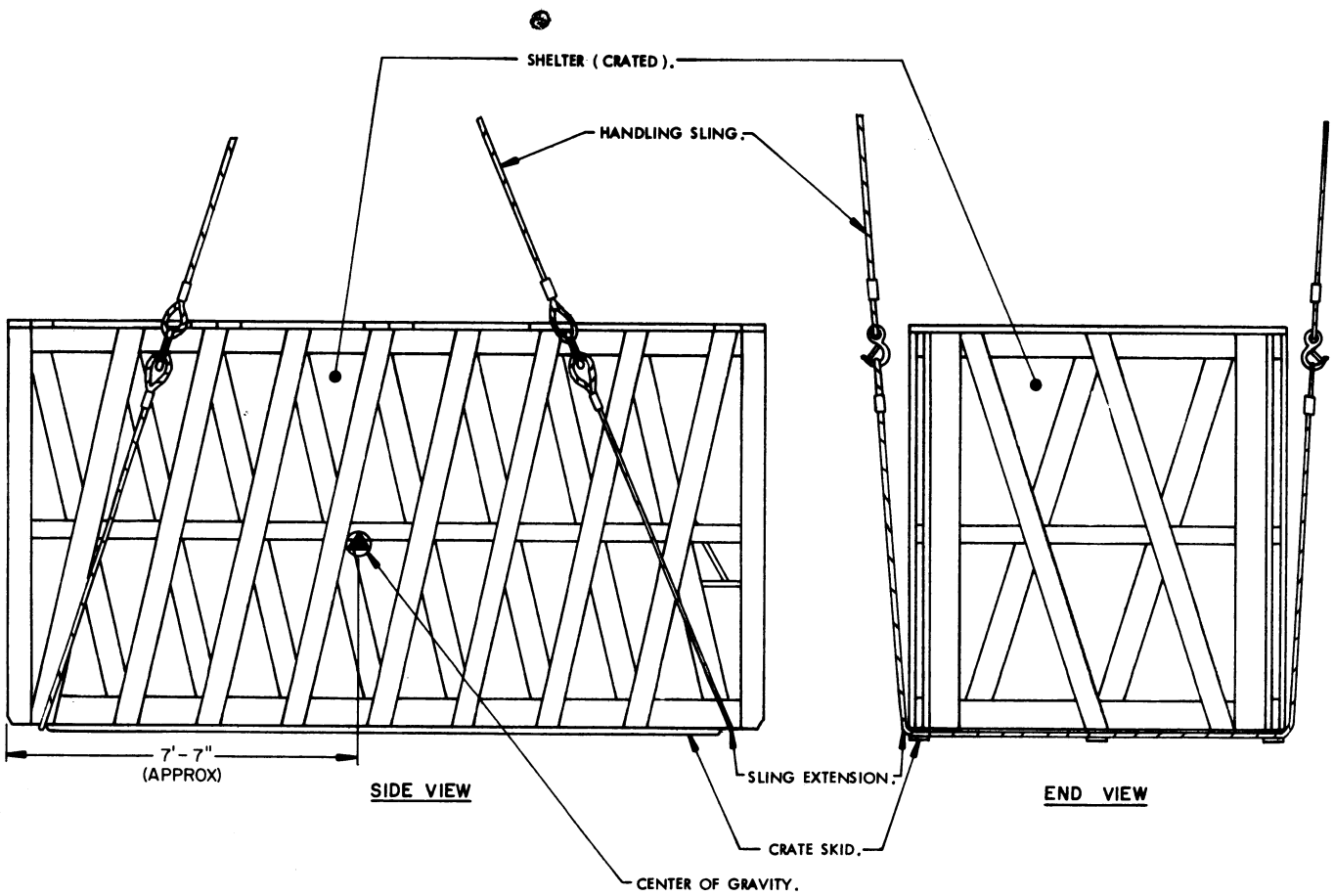
- A. THIS DOCUMENT HAS BEEN PREPARED AND ISSUED IN ACCORDANCE WITH AMCR 740-13.
- B. THIS DRAWING DEPICTS MINIMUM PROCEDURES APPLICABLE TO THE HANDLING, STOWAGE, AND BRACING ABOARD SHIPS OF THE SHELTER, AN/TSQ-73 (MISSILE MINDER) (CRATED), FOR THE AADCP SYSTEM.
- C. OTHER TYPES OF CARGO MAY BE STOWED IN THE SAME HOLD OR TWEEN DECK WITH THE SHELTER SHOWN HEREIN.
- D. LADING DATA:
 - DIMENSIONS OF CRATE (TYPICAL) --- 16'-10-1/2" LONG BY 8'-0-1/4" WIDE
BY 7'-7-1/4" HIGH.
 - GROSS WEIGHT ----- 10,150 LBS (APPROX).
 - CUBE ----- 1,030 CU. FT.

HANDLING:

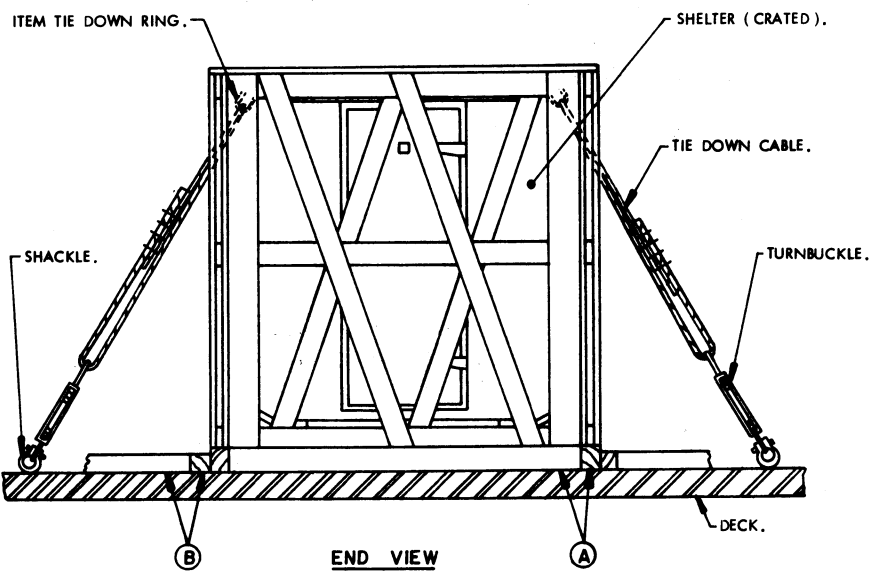
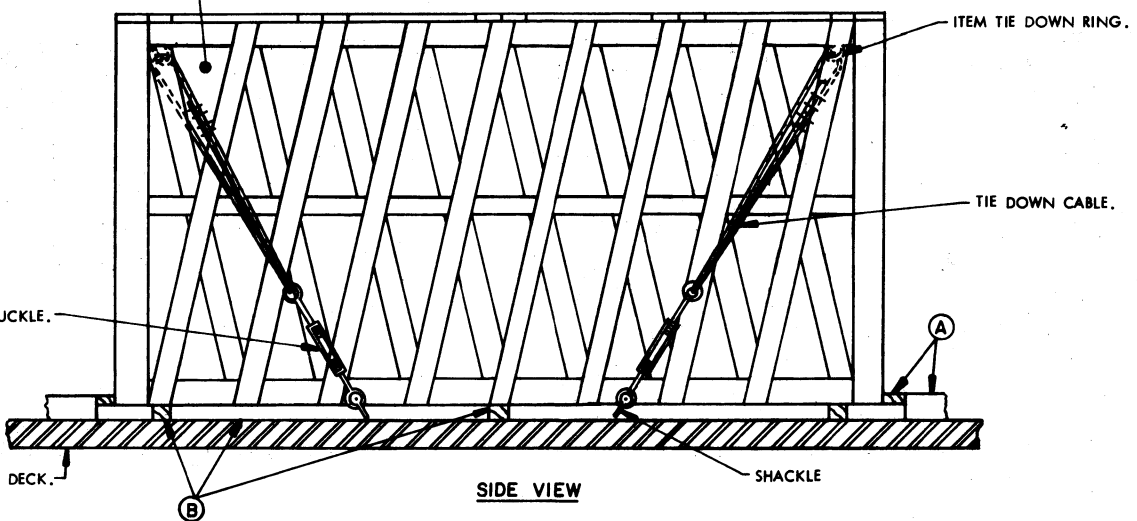
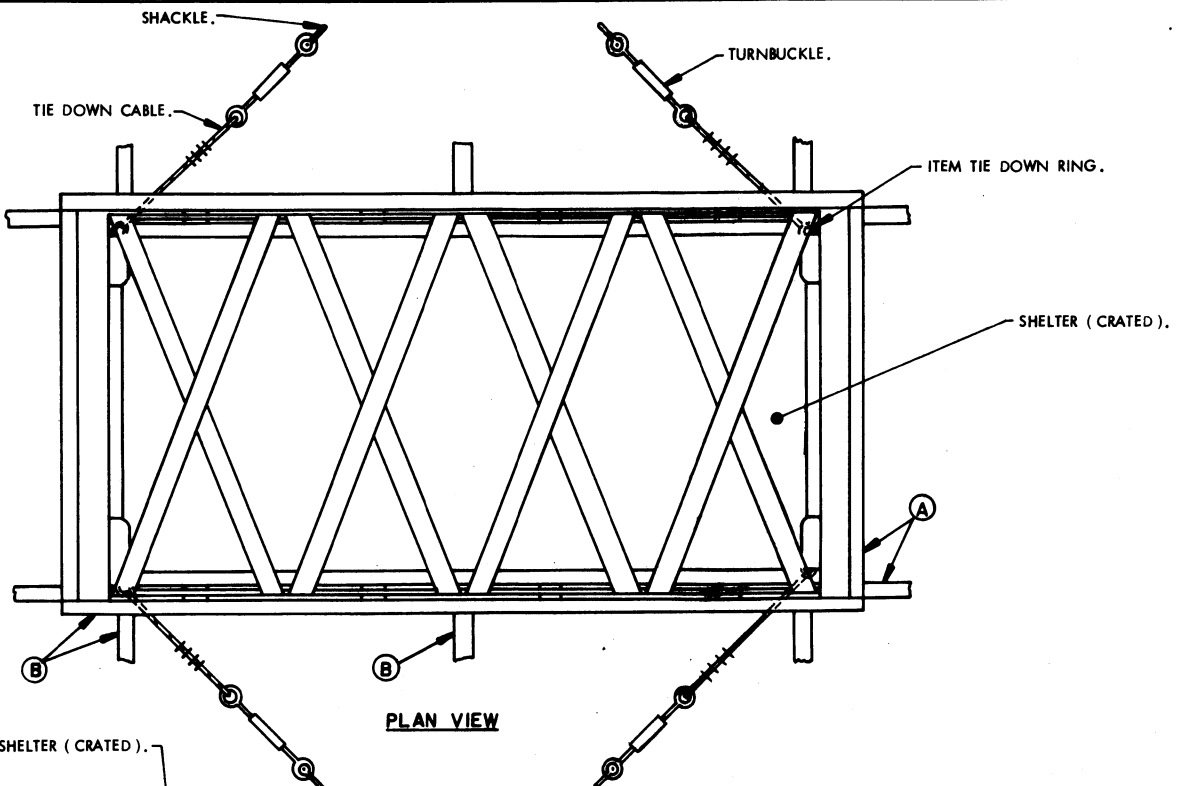
- A. PERTINENT PROVISIONS OF TITLE 46 CODE OF FEDERAL REGULATIONS APPLY.
- B. HANDLING OF THE SHELTER (CRATED) SHOULD BE ACCOMPLISHED BY USING SLING EXTENSIONS SECURELY POSITIONED IN THE NOTCHES OF THE CRATE SKIDS AS SHOWN.
- C. EACH CRATED ITEM SHALL BE HANDLED INDIVIDUALLY. STACKING OF CRATED ITEMS IS NOT PERMITTED.
- D. THE HANDLING SLING SHALL BE OF A DESIGN AND CONFIGURATION TO LIFT THE ITEM IN SUCH A MANNER THAT THE CABLE LEGS DO NOT APPLY EXCESSIVE PRESSURE WHICH MAY DAMAGE THE CRATE.
- E. ALTHOUGH DESIRABLE, A LEVEL LIFT IS NOT MANDATORY. THE CENTER OF GRAVITY OF THIS ITEM IS SHOWN TO ASSIST IN DETERMINING CABLE LENGTHS TO ASSURE A SAFE LIFT.

STOWAGE AND BRACING:

- A. STOWAGE OF THIS ITEM IS RESTRICTED TO ONE (1) LAYER HIGH. HOWEVER, OTHER CARGO ITEMS MAY BE OVER-STOWED BY CONSTRUCTING A DUNNAGE FLOOR ON TOP OF THE DEPICTED CRATES. CAUTION: THE WEIGHT OF OVER-STOWED CARGO MUST NOT CRUSH OR OTHERWISE DAMAGE THE CRATE OF THE SHELTER.
- B. SPECIES, GRADE AND SIZE OF LUMBER TO BE USED WILL COMPLY WITH REQUIREMENTS OF CURRENT SHIPWRIGHT-CARPENTRY AND RELATED SERVICES CONTRACTS. BRACING METHODS AND LUMBER SIZES DEPICTED IN THIS DRAWING ARE CONSIDERED MINIMUM AND ARE NOT INTENDED TO CONFLICT WITH CONTRACT REQUIREMENTS.
- C. A TYPICAL TIE DOWN PROCEDURE FOR THE CRATED ITEM IS SHOWN ON PAGE 4 AND DEPICTS THE PREFERRED METHOD OF USING CABLES AND TURNBUCKLES. IF USED, A TURNBUCKLE MUST BE OF A SIZE EQUAL IN STRENGTH TO THE MINIMUM SIZE CABLE REQUIRED TO SECURE THE ITEM. IN LIEU OF CABLES AND TURNBUCKLES, SECUREMENT MAY BE ACCOMPLISHED BY OTHER ACCEPTED METHODS.

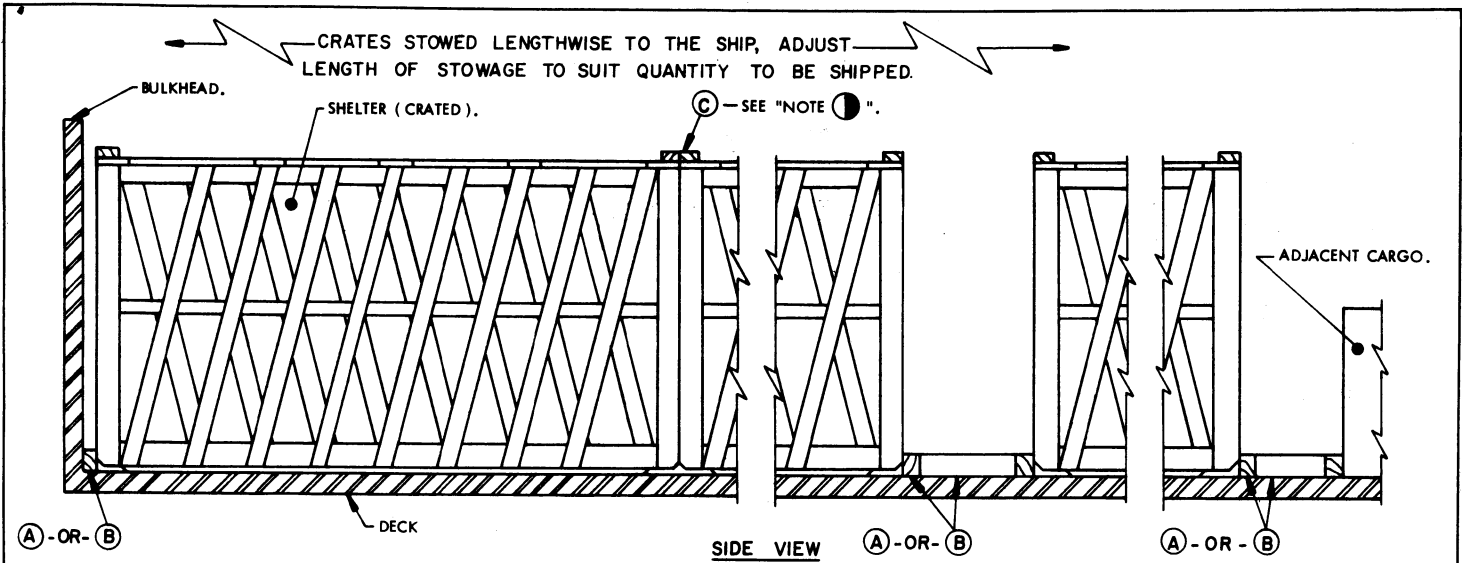


PRECAUTIONARY PROVISIONS FOR HANDLING, STOWAGE AND BRACING AS SPECIFIED IN THE NOTES ON PAGE 2 MUST BE OBSERVED.



MINIMUM LUMBER SIZES	
(A)	4" X 6"
(B)	4" X 4"

PRECAUTIONARY PROVISIONS FOR HANDLING, STOWAGE AND BRACING AS SPECIFIED IN THE NOTES ON PAGE 2 MUST BE OBSERVED.

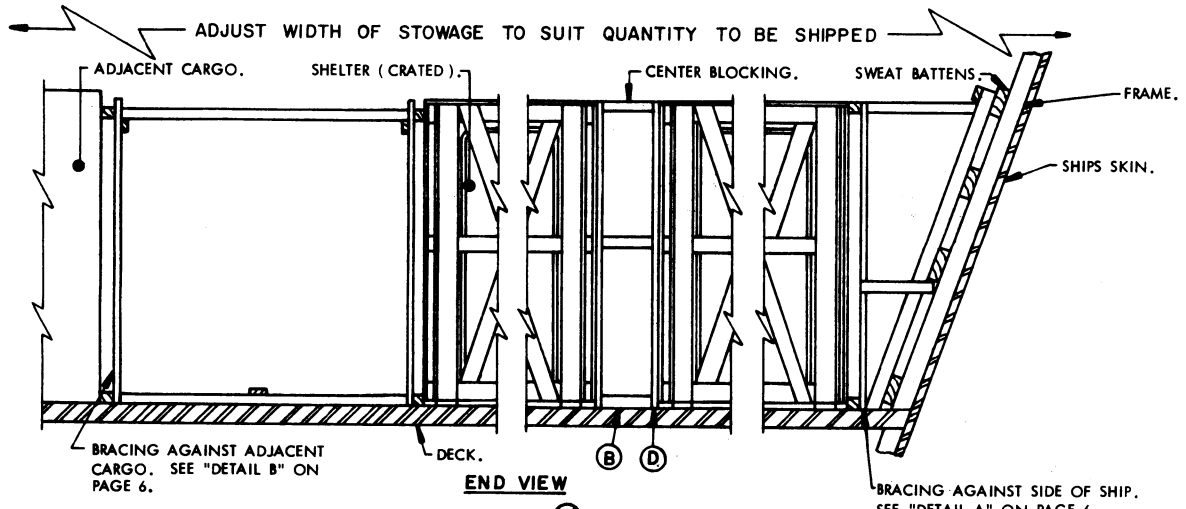


NOTE (C):
 PIECE MARKED (C) IS REQUIRED TO SECURE LATERALLY ADJACENT CRATES TOGETHER TO PREVENT LATERAL TIPPING. POSITION ACROSS THE CRATE AT EACH END SO THAT IT EXTENDS ACROSS THE FULL WIDTH OF THE CRATE BEING SECURED AND AT LEAST ONE (1) CRATE ADJACENT THERETO. NAIL PIECE MARKED (C) TO CRATE END WITH APPROPRIATELY SIZED NAILS.

THIS VIEW SHOWS BRACING AGAINST END OF CRATE AND USING FLOOR LINE BRACING MATERIAL (A) (4" X 6", 6" VERTICAL). WHEN BRACING AGAINST CRATE SIDES, USE FLOOR LINE BRACING MATERIAL (B) IN LIEU OF (A) MATERIAL.

MINIMUM LUMBER SIZES	
(A)	4" X 6"
(B)	4" X 4"
(C)	2" X 6"
(D)	2" X 4"

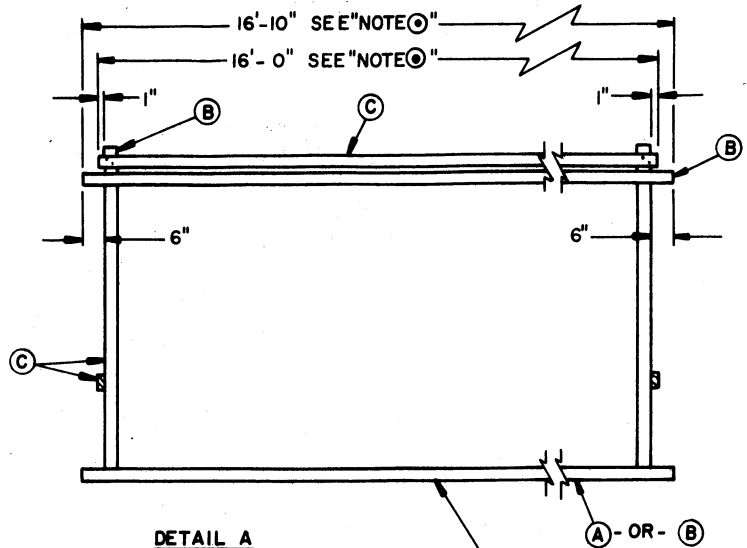
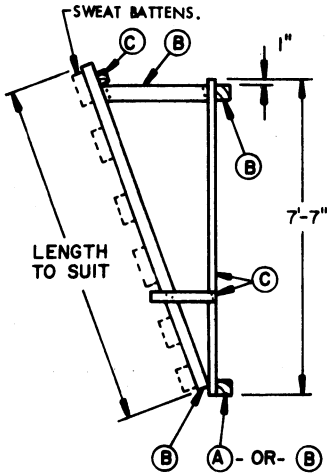
BRACING METHOD II, W/O CABLE



NOTE (C):
 THE "END VIEW" SHOWS BRACING AGAINST SIDE OF CRATE AND USING FLOOR LINE BRACING MATERIAL (B) (4" X 4"). WHEN BRACING AGAINST CRATE ENDS, USE FLOOR LINE BRACING MATERIAL (A) (4" X 6", 6" VERTICAL) IN LIEU OF (B) MATERIAL.

PRECAUTIONARY PROVISIONS FOR HANDLING, STOWAGE AND BRACING AS SPECIFIED IN THE NOTES ON PAGE 2 MUST BE OBSERVED.

BRACING METHOD III, W/O CABLE



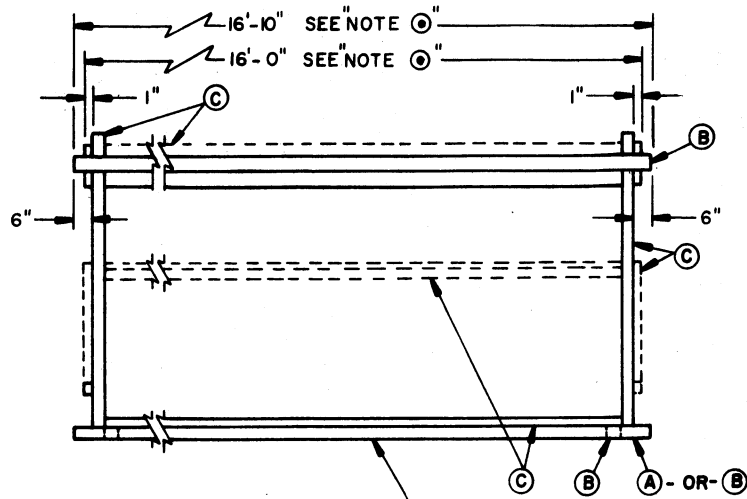
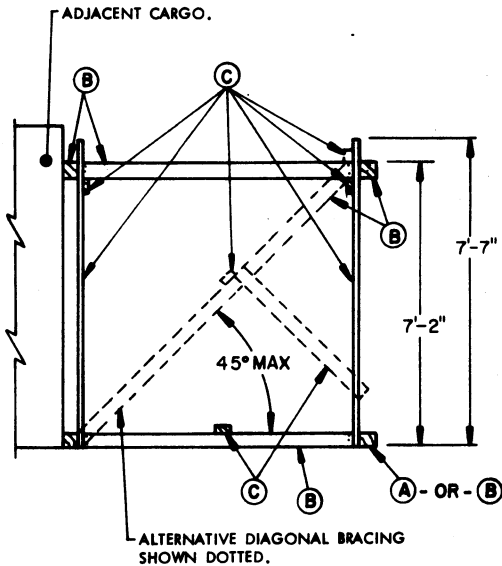
DETAIL A
SUGGESTED BRACING
AT SIDE OF SHIP.

FLOOR LINE BRACING AGAINST
CRATE. SEE "NOTE ①".

NOTE ①:

DIMENSIONS SHOWN ARE FOR BRACING AGAINST
SIDE OF CRATE AND USING FLOOR LINE BRACING
MATERIAL (B). WHEN BRACING AGAINST CRATE
ENDS, CHANGE DIMENSIONS OF THE BRACING
ASSEMBLY, USE 8'-0" IN LIEU OF 16'-10" AND
7'-2" IN LIEU OF 16'-0". ALSO, USE FLOOR LINE
BRACING MATERIAL (A) (4" X 6", 6" VERTICAL)
AGAINST CRATE ENDS IN LIEU OF (B) MATERIAL.

MINIMUM LUMBER SIZES	
(A)	4" X 6"
(B)	4" X 4"
(C)	2" X 4"



DETAIL B
SUGGESTED BRACING AGAINST
ADJACENT CARGO.

FLOOR LINE BRACING AGAINST
CRATE. SEE "NOTE ①".

PRECAUTIONARY PROVISIONS FOR HANDLING,
STOWAGE AND BRACING AS SPECIFIED IN THE
NOTES ON PAGE 2 MUST BE OBSERVED.