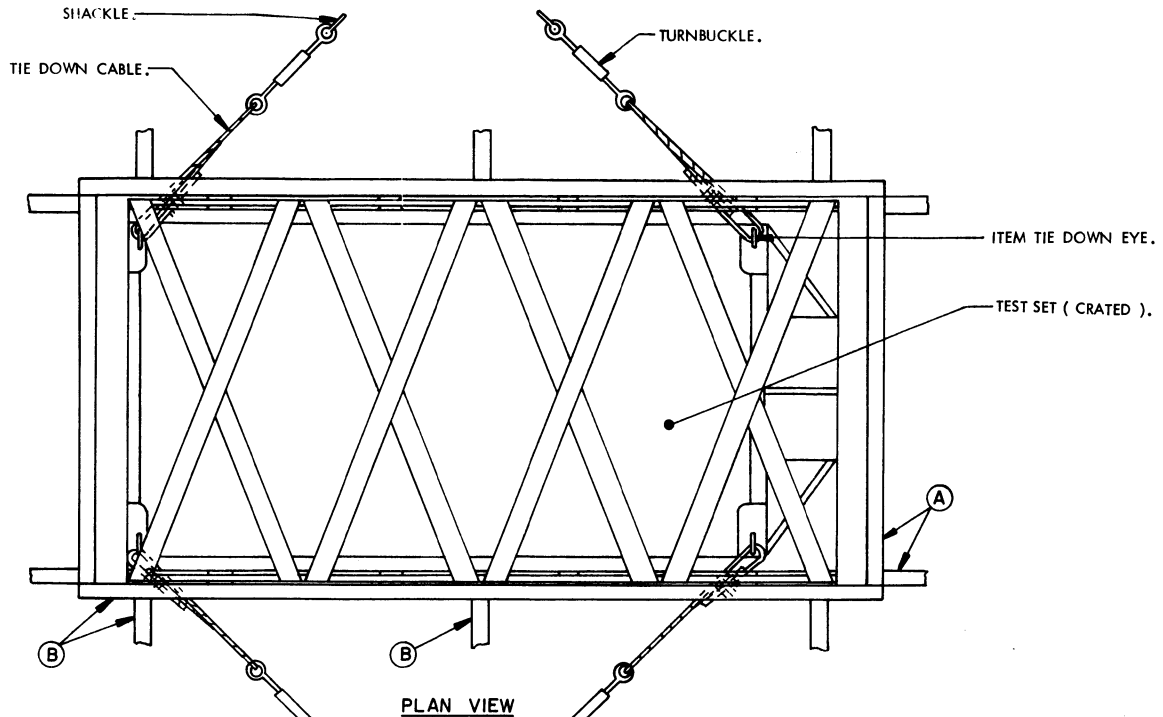
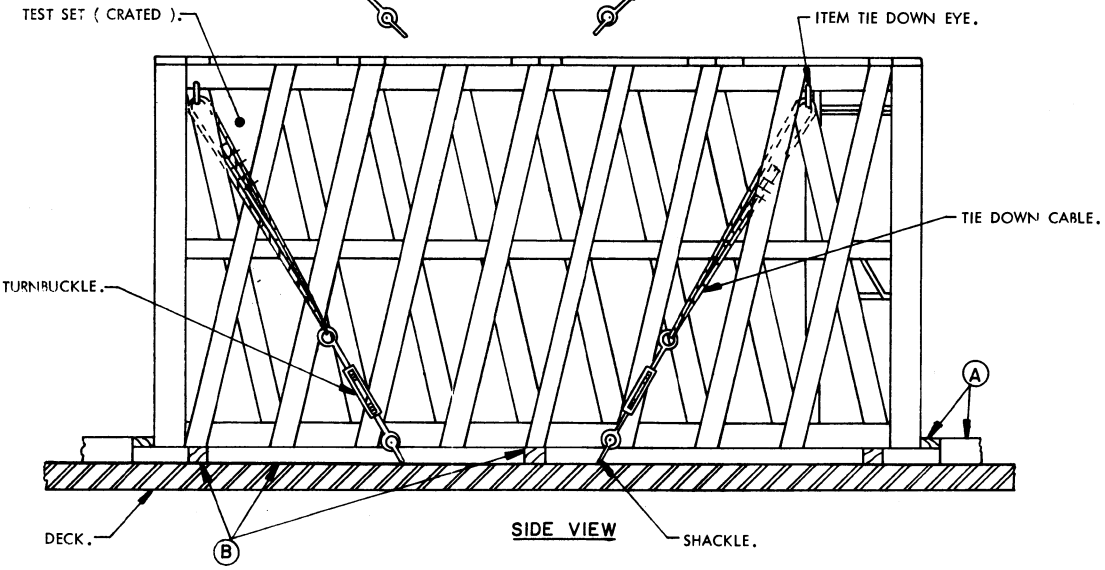


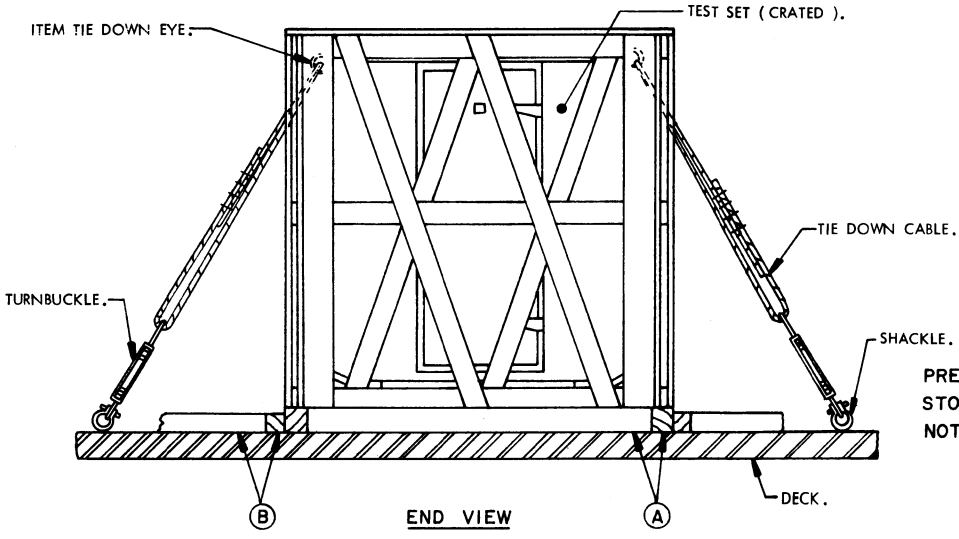
PRECAUTIONARY PROVISIONS FOR HANDLING, STOWAGE AND BRACING AS SPECIFIED IN THE NOTES ON PAGE 2 MUST BE OBSERVED



PLAN VIEW



SIDE VIEW

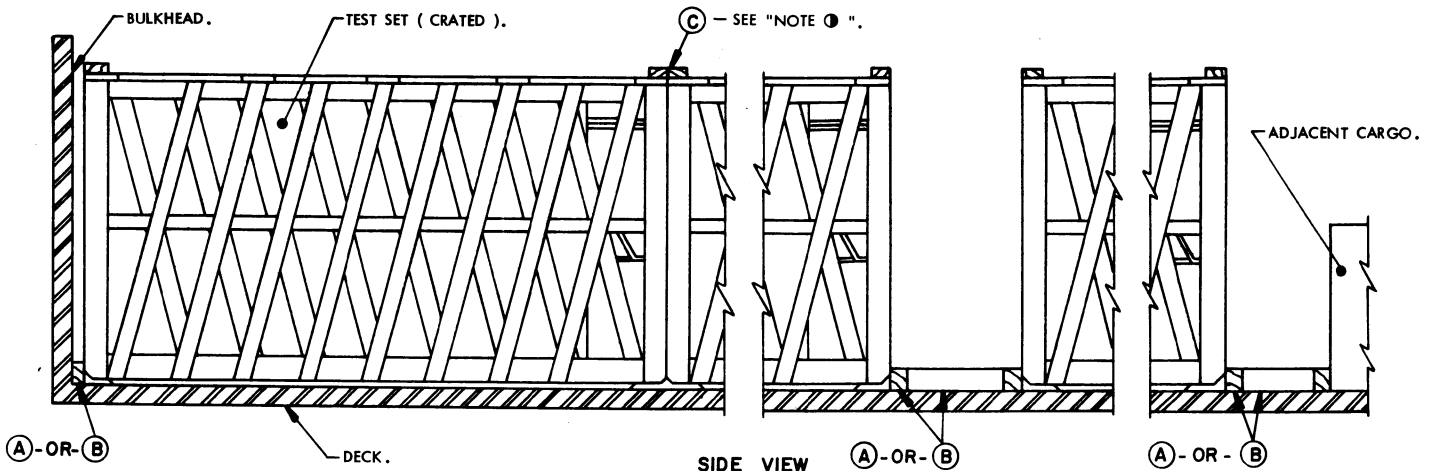


END VIEW

MINIMUM LUMBER SIZES	
(A)	4" X 6"
(B)	4" X 4"

PRECAUTIONARY PROVISIONS FOR HANDLING, STOWAGE AND BRACING AS SPECIFIED IN THE NOTES ON PAGE 2 MUST BE OBSERVED.

← CRATES STOWED LENGTHWISE TO THE SHIP. ADJUST LENGTH OF STOWAGE TO SUIT QUANTITY TO BE SHIPPED. →



SIDE VIEW

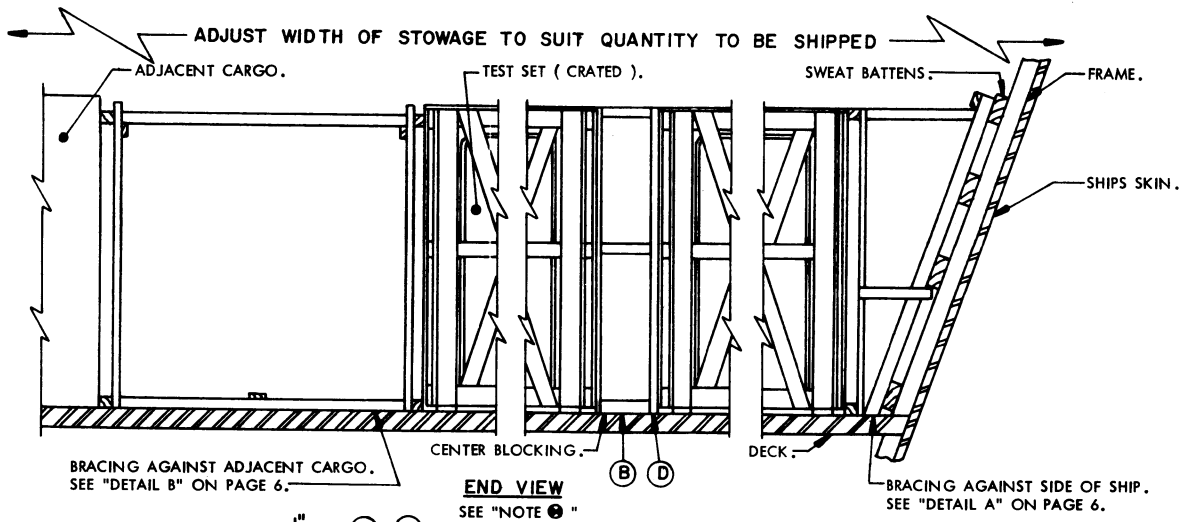
NOTE 1 :

PIECE MARKED (C) IS REQUIRED TO SECURE LATERALLY ADJACENT CRATES TOGETHER TO PREVENT LATERAL TIPPING. POSITION ACROSS THE CRATE AT EACH END SO THAT IT EXTENDS ACROSS THE FULL WIDTH OF THE CRATE BEING SECURED AND AT LEAST ONE (1) CRATE ADJACENT THERETO. NAIL PIECE MARKED (C) TO CRATE END WITH APPROPRIATELY SIZED NAILS.

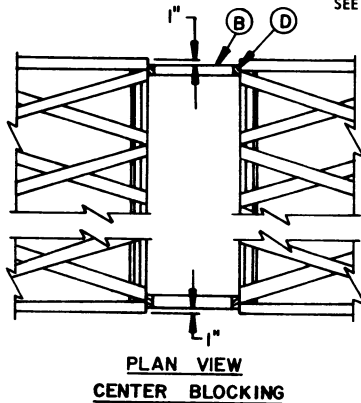
THIS VIEW SHOWS BRACING AGAINST END OF CRATE AND USING FLOOR LINE BRACING MATERIAL (A) (4" X 6", 6" VERTICAL). WHEN BRACING AGAINST CRATE SIDES, USE FLOOR LINE BRACING MATERIAL (B) IN LIEU OF (A) MATERIAL.

MINIMUM LUMBER SIZES	
(A)	4" X 6"
(B)	4" X 4"
(C)	2" X 6"
(D)	2" X 4"

BRACING METHOD II, W/O CABLE



END VIEW
SEE "NOTE 1"



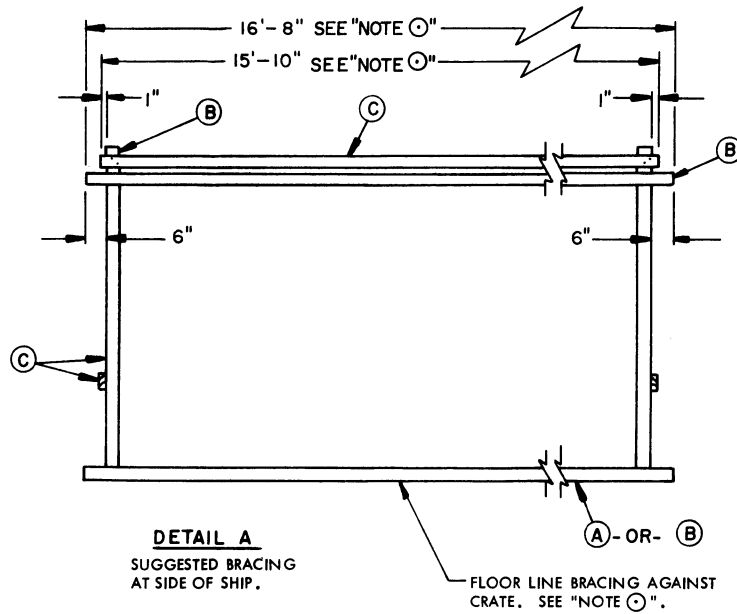
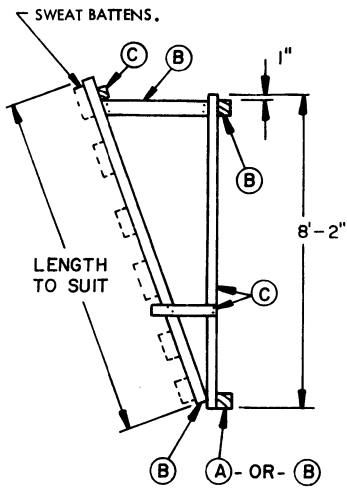
PLAN VIEW
CENTER BLOCKING

NOTE 2 :

THE "END VIEW" SHOWS BRACING AGAINST SIDE OF CRATE AND USING FLOOR LINE BRACING MATERIAL (B) (4" X 4"). WHEN BRACING AGAINST CRATE ENDS, USE FLOOR LINE BRACING MATERIAL (A) (4" X 6", 6" VERTICAL) IN LIEU OF (B) MATERIAL.

PRECAUTIONARY PROVISIONS FOR HANDLING, STOWAGE AND BRACING AS SPECIFIED IN THE NOTES ON PAGE 2 MUST BE OBSERVED.

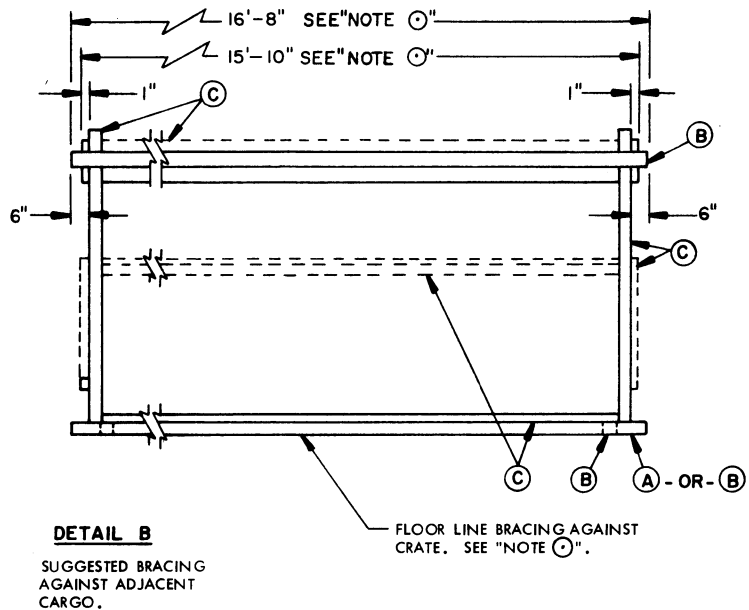
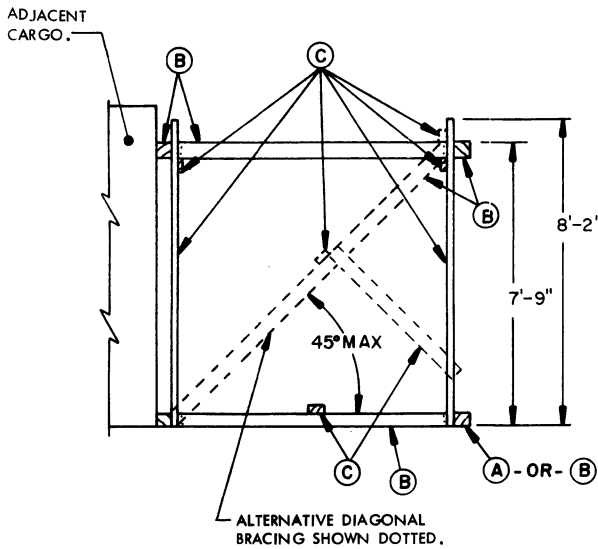
BRACING METHOD III, W/O CABLE



NOTE C :

DIMENSIONS SHOWN ARE FOR BRACING AGAINST SIDE OF CRATE AND USING FLOOR LINE BRACING MATERIAL (B). WHEN BRACING AGAINST CRATE ENDS, CHANGE DIMENSIONS OF THE BRACING ASSEMBLY, USE 7'-10" IN LIEU OF 16'-8" AND 7'-0" IN LIEU OF 15'-10". ALSO USE FLOOR LINE BRACING MATERIAL (A) (4" X 6", 6" VERTICAL) AGAINST CRATE ENDS IN LIEU OF (B) MATERIAL.

MINIMUM LUMBER SIZES	
(A)	4" X 6"
(B)	4" X 4"
(C)	2" X 4"



PRECAUTIONARY PROVISIONS FOR HANDLING, STOWAGE AND BRACING AS SPECIFIED IN THE NOTES ON PAGE 2 MUST BE OBSERVED.