

APPROVED BY
MTMTS

Edward Gilliland
TEA, MTMTS

DATE *12 Dec 1975*

REVISION NO 1

SIGNED *E.L. Poyz* *MTT-TRP*

DATE *3 Dec 1975*

FAAR

MINIMUM REQUIREMENTS FOR THE
HANDLING, STOWAGE, AND BRACING
ABOARD SHIPS OF RADAR SYSTEM
COMPONENT, MOUNTED ON WHEELED
VEHICLE, 6X6, M56I (GAMMA GOAT)
AND COMPONENT EQUIPMENT IN MIOIAI
TRAILER, CARGO, 3/4 TON, 2-WHEEL

REVISIONS				DRAFTSMAN D.L.P./EWE	PROJECT JNW/JNW
1	OCT 75	JNW <i>Wesley E. Gilliland</i>	<i>Wesley E. Gilliland</i>	CHECKED <i>Wesley E. Gilliland</i>	LOG ENGRS OFFICE <i>Wesley E. Gilliland</i>
				APPROVED <i>Wesley E. Gilliland</i>	
				APPROVED BY ORDER OF COMMANDING GENERAL U. S. ARMY MATERIEL COMMAND <i>Wesley E. Gilliland</i> USAMC AMMO CENTER	
				U. S. ARMY MATERIEL COMMAND	
				JANUARY 1973	
				CLASS	DIVISION
				19	48
				DRAWING	FILE
				7265	GSE 18FAI

DO NOT SCALE

NOTES

GENERAL:

- A. THIS DOCUMENT HAS BEEN PREPARED AND ISSUED IN ACCORDANCE WITH AR 740-1.
- B. THIS DRAWING DEPICTS MINIMUM PROCEDURES APPLICABLE TO THE HANDLING, STOWAGE, AND BRACING ABOARD SHIPS OF RADAR SYSTEM COMPONENT, MOUNTED ON WHEELED VEHICLE, 6 X 6, M561 (GAMMA GOAT) AND COMPONENT EQUIPMENT IN M101A1 TRAILER, CARGO, 3/4 TON, 2-WHEEL, FOR THE FAAR MISSILE SYSTEM.
- C. THE WHEELED VEHICLES SHOWN HEREIN MAY BE STOWED IN THE SAME HOLD OR TWEEN DECK WITH OTHER TYPES OF CARGO. HOWEVER, IF THE M561 (GAMMA GOAT) IS TO BE STOWED ADJACENT TO DANGEROUS ARTICLES, PERTINENT REQUIREMENTS OF COAST GUARD REGULATIONS NO. CG 108 MUST BE APPLIED.
- D. LADING DATA:
1. M561 VEHICLE (GAMMA GOAT).
DIMENSIONS ----- 20'-3" LONG X 7'-1-1/4" WIDE X 9'-5" HIGH.
GROSS WEIGHT --- 10,500 LBS (APPROX).
CUBE ----- 1,355 CUBIC FEET.
 2. M101A1 TRAILER.
DIMENSIONS ----- 12'-3" LONG X 6'-7" WIDE X 6'-3" HIGH.
GROSS WEIGHT --- 2,660 LBS (APPROX).
CUBE ----- 574 CUBIC FEET.

HANDLING:

- A. PERTINENT PROVISIONS OF TITLE CODE OF FEDERAL REGULATIONS APPLY.
- B. HANDLING OF THE ITEMS SHOULD BE ACCOMPLISHED BY USING THE LIFT POINTS DESIGNATED HEREIN.
- C. THE HANDLING SLING SHALL BE OF A DESIGN AND CONFIGURATION TO LIFT THE ITEMS IN SUCH A MANNER THAT THE CABLE LEGS DO NOT COME IN CONTACT WITH OR APPLY PRESSURE AGAINST THE FRAMING, SUPER-STRUCTURE OR OTHER MEMBERS OF THE ITEMS WHEN BEING LIFTED.
- D. EACH LEG OF THE HANDLING SLING MUST BE SECURELY ATTACHED TO A LIFT POINT PRIOR TO LIFTING. ADDITIONALLY, WHEN HANDLING THE M561 (GAMMA GOAT) THE SLING EXTENSION SHOWN ON PAGE 3 ATTACHED TO THE INTER-CONNECTING LINK BETWEEN THE TRACTOR UNIT AND CARRIER UNIT MUST BE USED, WHETHER OR NOT THE INTERBODY LOCKOUT TRUSSES ARE INSTALLED.
- E. ALTHOUGH DESIRABLE, A LEVEL LIFT IS NOT MANDATORY. THE CENTER OF GRAVITY OF THESE ITEMS ARE SHOWN TO ASSIST IN DETERMINING CABLE LENGTHS TO ASSURE A SAFE LIFT.

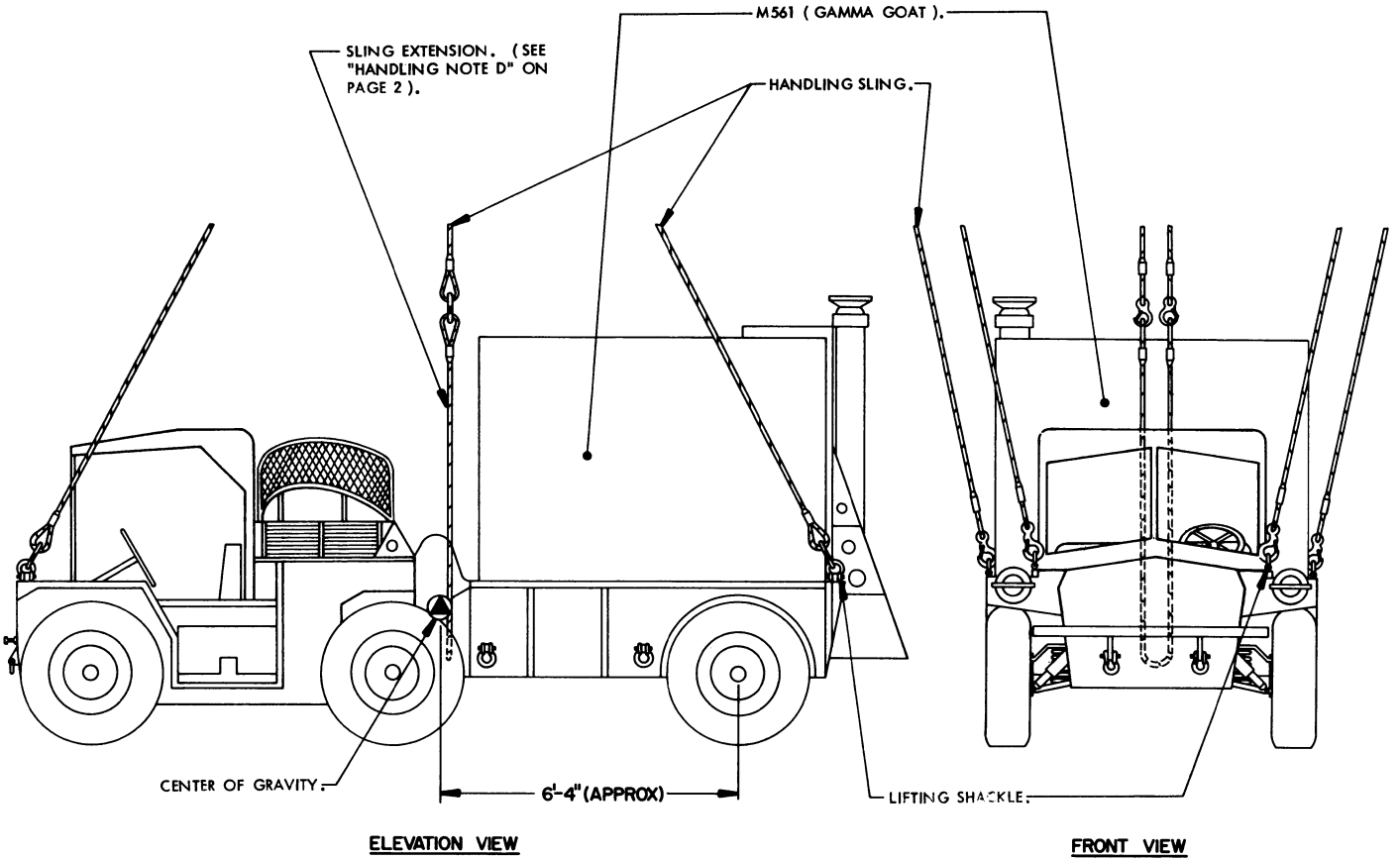
STOWAGE AND BRACING:

- A. WHEN STOWING THE DESIGNATED ITEMS WITHIN THE HOLD OR TWEEN DECK, BRACING BETWEEN ITEMS OR BETWEEN DESIGNATED ITEMS AND OTHER CARGO SHALL ONLY BE APPLIED AGAINST THE WHEELS OF THE VEHICLE. ALSO, OTHER CARGO ITEMS MUST NOT BE STACKED ON TOP OF OR AGAINST ANY OTHER PART OF A VEHICLE THAN AS IDENTIFIED IMMEDIATELY ABOVE.
- B. SPECIES, GRADE AND SIZE OF LUMBER TO BE USED WILL COMPLY WITH REQUIREMENTS OF CURRENT SHIPWRIGHT-CARPENTRY AND RELATED SERVICES CONTRACTS. BRACING METHODS AND LUMBER SIZES DEPICTED IN THIS DRAWING ARE CONSIDERED MINIMUM AND ARE NOT INTENDED TO CONFLICT WITH CONTRACT REQUIREMENTS.
- C. THE DESIGNATED ITEMS ARE EQUIPPED WITH TIE DOWN DEVICES AS SHOWN HEREIN WHICH ARE SYMMETRICAL ABOUT THE LONGITUDINAL LINE OF CENTER. THE ITEMS SHOULD BE SECURED FORE AND AFT TO SHIP TIE DOWN POINTS USING A MINIMUM OF TWO SYMMETRICALLY LOCATED TIE DOWN DEVICES IN EACH DIRECTION AS TYPICALLY SHOWN WITHIN THIS DOCUMENT.
- D. TYPICAL TIE DOWN PROCEDURES ARE SHOWN AND DEPICT THE PREFERRED METHOD OF USING CABLES AND TURNBUCKLES. IF USED, A TURNBUCKLE MUST BE OF A SIZE EQUAL IN STRENGTH TO THE MINIMUM SIZE CABLE REQUIRED TO SECURE THE ITEM. IN LIEU OF CABLES AND TURNBUCKLES, SECUREMENT MAY BE ACCOMPLISHED BY OTHER ACCEPTED METHODS.

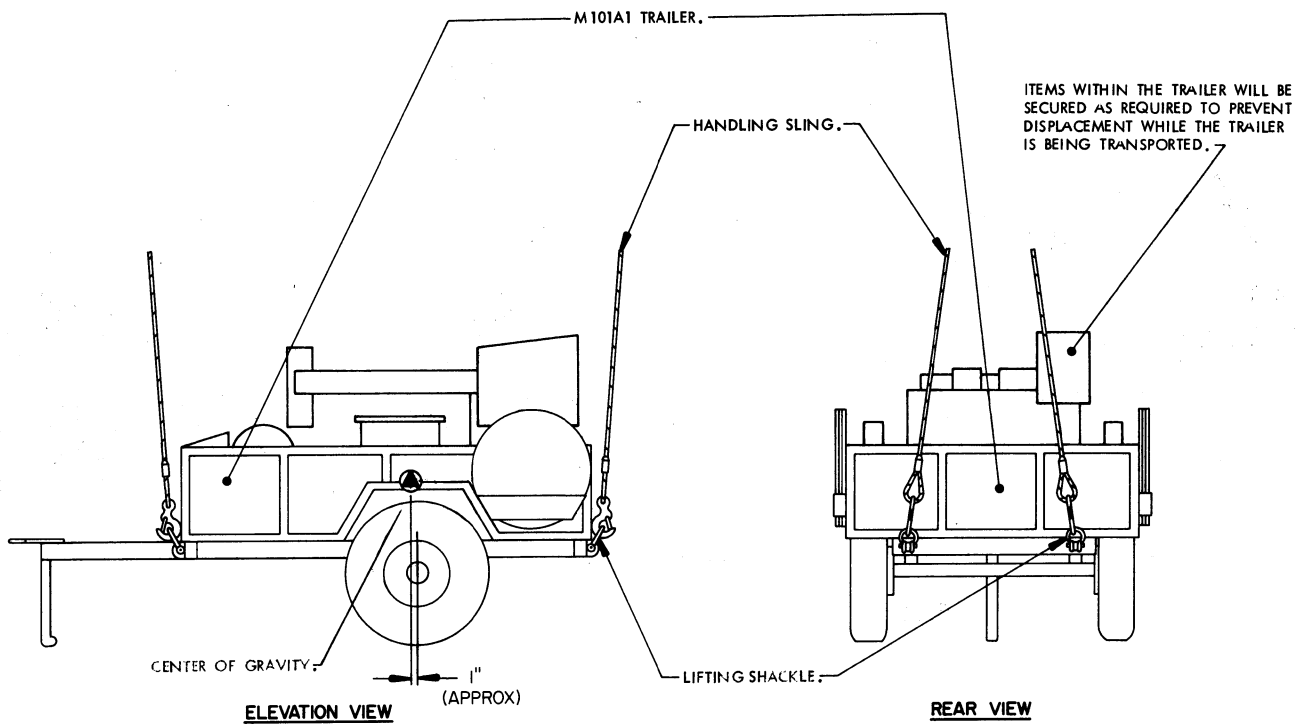
REVISION

REVISION NO. 1, DATED OCTOBER 1975, CONSISTS OF:

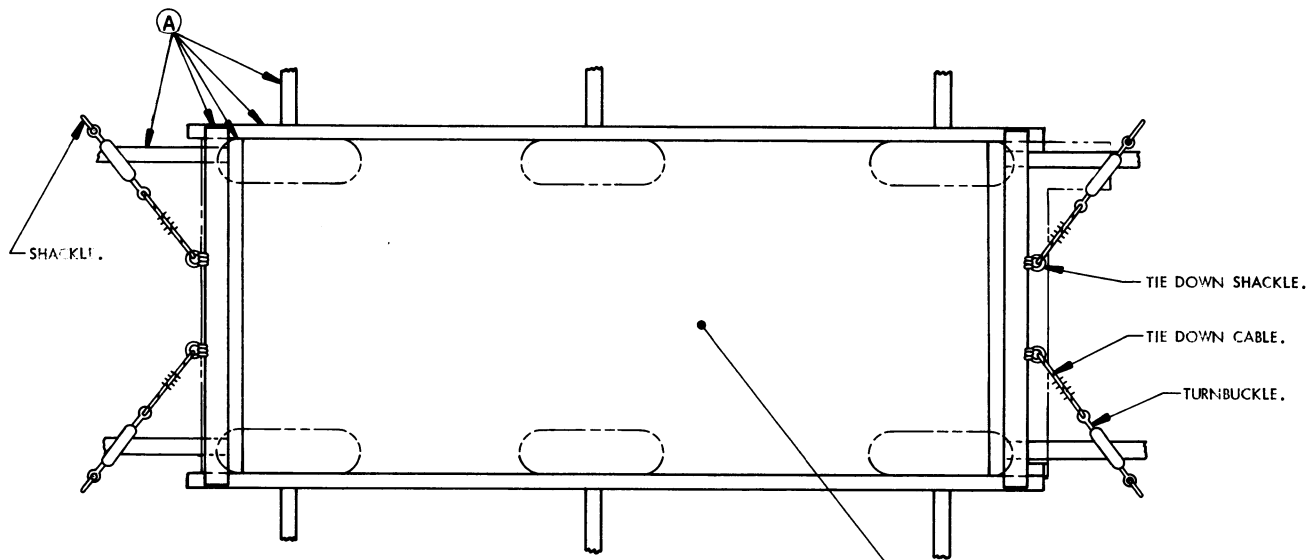
1. CHANGING ITEM DETAILS TO CURRENT CONFIGURATION.
2. UPDATING THE GENERAL NOTES ON PAGE 2.



PRECAUTIONARY PROVISIONS FOR HANDLING,
STOWAGE AND BRACING AS SPECIFIED IN
THE NOTES ON PAGE 2 MUST BE OBSERVED.

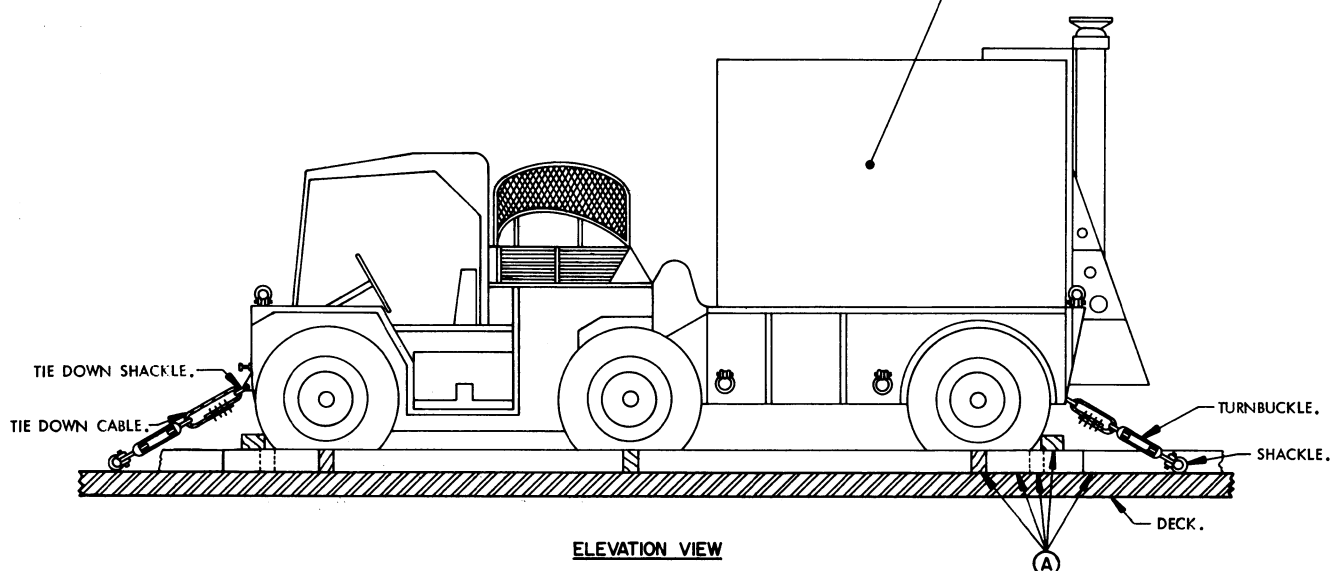


PRECAUTIONARY PROVISIONS FOR HANDLING, STOWAGE AND BRACING AS SPECIFIED IN THE NOTES ON PAGE 2 MUST BE OBSERVED.

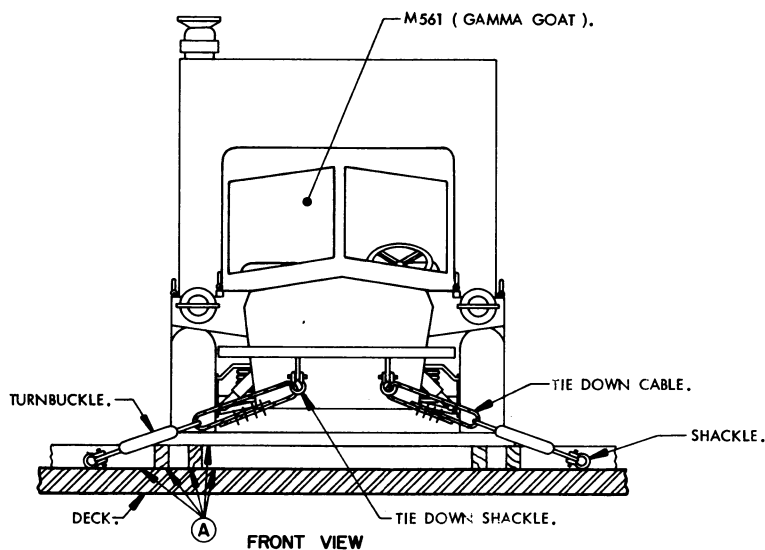


PLAN VIEW

PHANTOM LINES INDICATE VEHICLE AND WHEELS.



ELEVATION VIEW

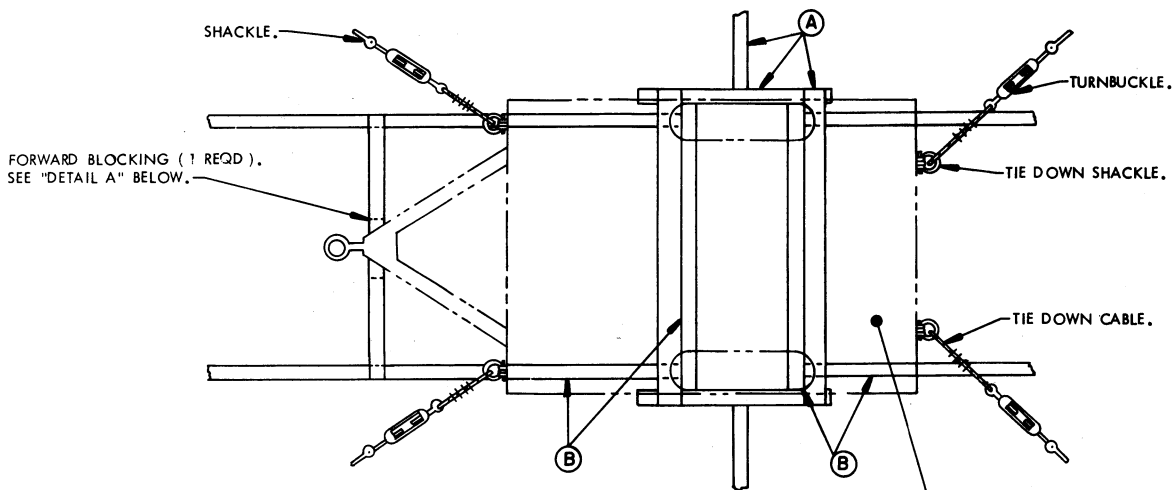


FRONT VIEW

MINIMUM LUMBER SIZES	
(A)	4" X 6"

PRECAUTIONARY PROVISIONS FOR HANDLING, STOWAGE AND BRACING AS SPECIFIED IN THE NOTES ON PAGE 2 MUST BE OBSERVED.

BRACING OF VEHICLE

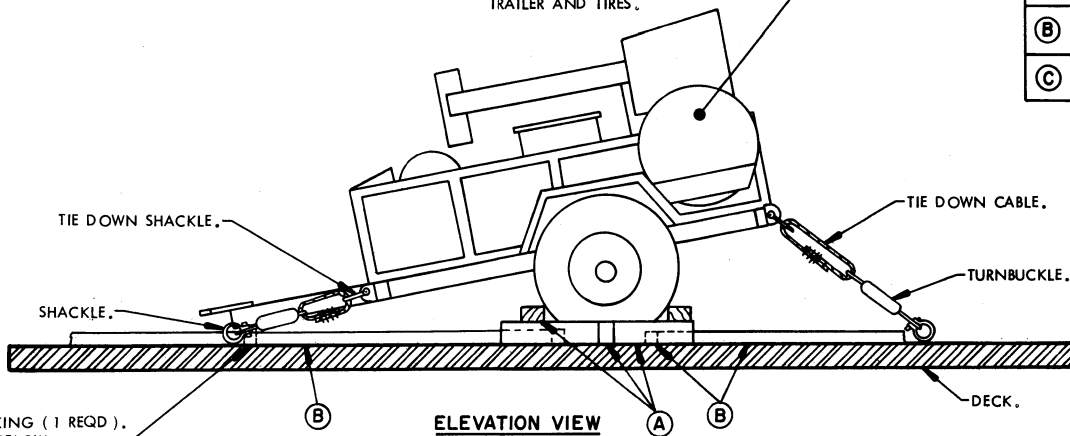


PRECAUTIONARY PROVISIONS FOR HANDLING, STOWAGE AND BRACING AS SPECIFIED IN THE NOTES ON PAGE 2 MUST BE OBSERVED.

PLAN VIEW

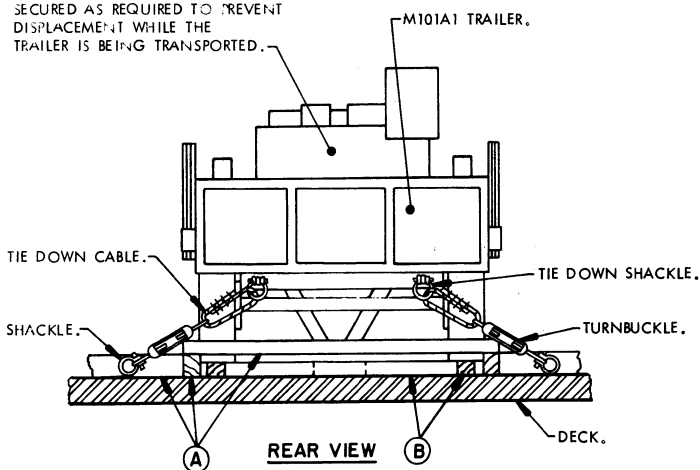
PHANTOM LINES INDICATE TRAILER AND TIRES.

MINIMUM LUMBER SIZES	
(A)	4" X 6"
(B)	4" X 4"
(C)	2" X 4"

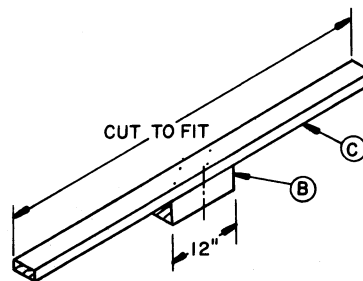


ELEVATION VIEW

ITEMS WITHIN THE TRAILER WILL BE SECURED AS REQUIRED TO PREVENT DISPLACEMENT WHILE THE TRAILER IS BEING TRANSPORTED.



REAR VIEW



DETAIL A