

APPROVED BY
MTMTS

Frank L. Pans
TEA, MTMTS

DATE *14 June 1972*

LANCE

MINIMUM REQUIREMENTS FOR THE HANDLING, STOWAGE, AND BRACING ABOARD SHIPS OF THE LAUNCH FIXTURE ASSEMBLY (CRATED)

REVISIONS			DRAFTSMAN	PROJ ENG	JANCPH-LCEM
			JAM / CKW	JNW / RSW	CDN / LAD
			CHECKER	LOG ENGINE OFFICE	AMBN1-SP
			<i>W.B. / 1007</i>	<i>John Boyd</i>	<i>M. Simpson</i>
			APPROVED		
			<i>Wesley E. Gilliland</i>		
			U. S. ARMY MATERIEL COMMAND		
			APPROVED BY ORDER OF COMMANDING GENERAL		
			U. S. ARMY MATERIEL COMMAND		
			<i>A. Ehringer</i>		
			USAMC ARMO CENTER		
			U. S. ARMY MATERIEL COMMAND		
			JULY 1972		
			CLASS	DIVISION	DRAWING
			19	48	7262
					FILE
					GSE 18LC6

DO NOT SCALE

NOTES

GENERAL:

- A. THIS DOCUMENT HAS BEEN PREPARED AND ISSUED IN ACCORDANCE WITH AMCR 740-13.
- B. THIS DRAWING DEPICTS MINIMUM PROCEDURES APPLICABLE TO THE HANDLING, STOWAGE, AND BRACING ABOARD SHIPS OF THE LAUNCH FIXTURE ASSEMBLY (CRATED), FOR THE LANCE MISSILE SYSTEM.
- C. OTHER TYPES OF CARGO MAY BE STOWED IN THE SAME HOLD OR TWEEN DECK WITH THE CRATED ITEM SHOWN HEREIN.
- D. LADING DATA:

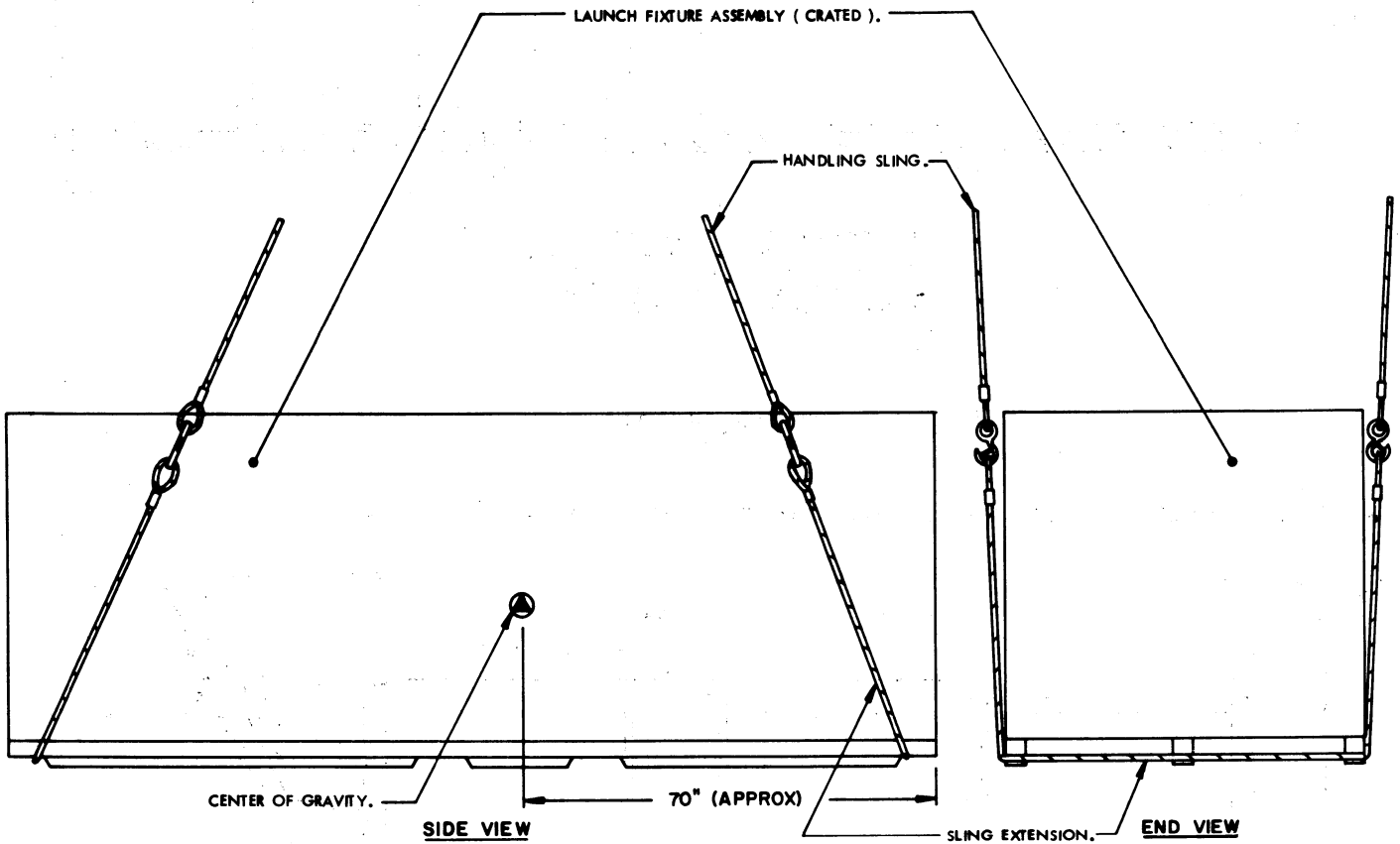
DIMENSIONS OF CRATE (TYPICAL) -----13'-1" LONG X 5'-1" WIDE X 4'-10"
HIGH.
GROSS WEIGHT -----2,350 POUNDS (APPROX).
CUBE -----320 CU. FT.

HANDLING:

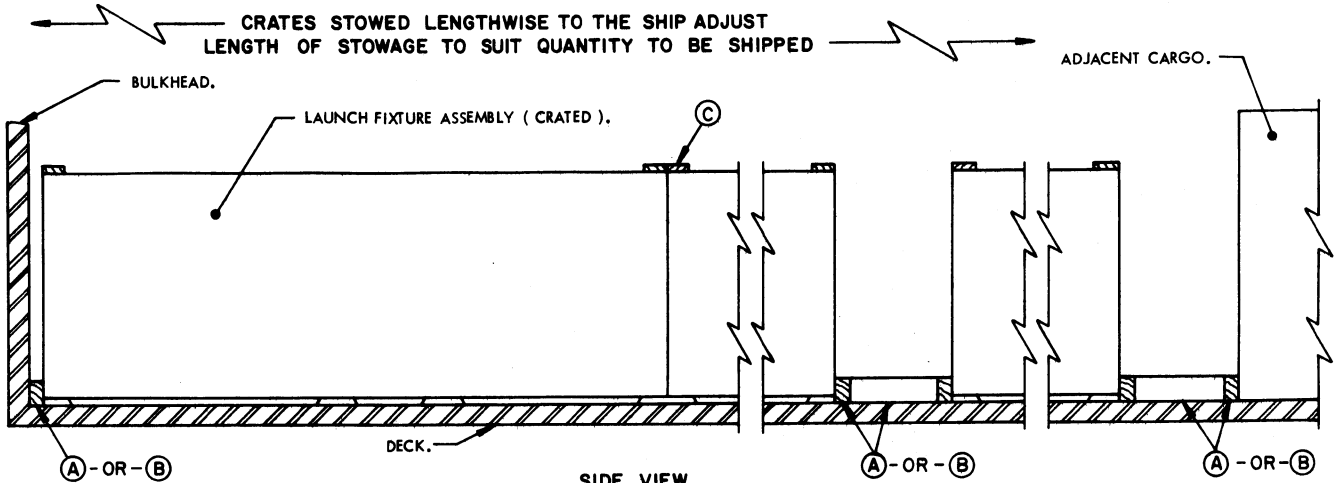
- A. PERTINENT PROVISIONS OF TITLE 46 CODE OF FEDERAL REGULATIONS APPLY.
- B. HANDLING OF THE CRATED ITEM SHOULD BE ACCOMPLISHED BY USING SLING EXTENSIONS SECURELY POSITIONED IN THE NOTCHES OF THE CRATE SKIDS AS SHOWN.
- C. EACH CRATED ITEM SHALL BE HANDLED INDIVIDUALLY. STACKING OF CRATED ITEMS IS NOT PERMITTED.
- D. THE HANDLING SLING SHALL BE OF A DESIGN AND CONFIGURATION TO LIFT THE ITEM IN SUCH A MANNER THAT THE CABLE LEGS DO NOT APPLY EXCESSIVE PRESSURE WHICH MAY DAMAGE THE CRATE.
- E. ALTHOUGH DESIRABLE, A LEVEL LIFT IS NOT MANDATORY. THE CENTER OF GRAVITY OF THIS ITEM IS SHOWN TO ASSIST IN DETERMINING CABLE LENGTH TO ASSURE A SAFE LIFT.

STOWAGE AND BRACING:

- A. STOWAGE OF THIS ITEM IS RESTRICTED TO ONE (1) LAYER HIGH. HOWEVER, OTHER CARGO ITEMS MAY BE OVER-STOWED BY CONSTRUCTING A DUNNAGE FLOOR ON TOP OF THE DEPICTED CRATES. CAUTION: THE WEIGHT OF OVER-STOWED CARGO MUST NOT CRUSH OR OTHERWISE DAMAGE THE CRATES OF THE LAUNCH FIXTURE ASSEMBLY.
- B. SPECIES, GRADE AND SIZE OF LUMBER TO BE USED WILL COMPLY WITH REQUIREMENTS OF CURRENT SHIPWRIGHT-CARPENTRY AND RELATED SERVICES CONTRACTS. BRACING METHODS AND LUMBER SIZES DEPICTED IN THIS DRAWING ARE CONSIDERED MINIMUM AND ARE NOT INTENDED TO CONFLICT WITH CONTRACT REQUIREMENTS.



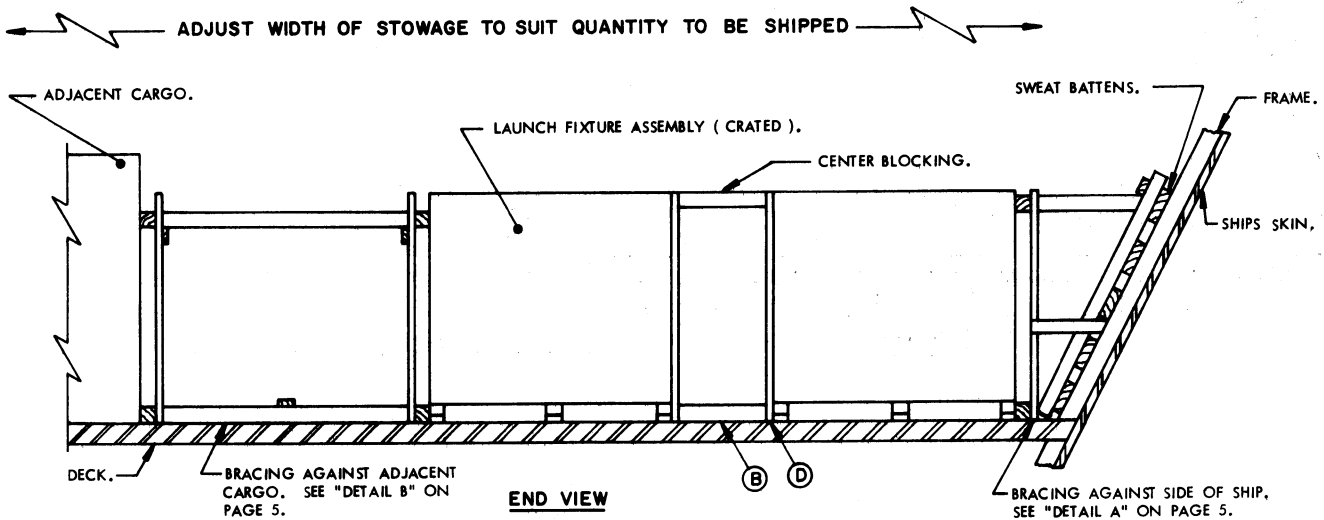
PRECAUTIONARY PROVISIONS FOR HANDLING, STOWAGE AND BRACING AS SPECIFIED IN THE NOTES ON PAGE 2 MUST BE OBSERVED.



SIDE VIEW

THIS VIEW SHOWS BRACING AGAINST END OF CRATE AND USING FLOOR LINE BRACING MATERIAL (A) (4" X 6", 6" VERTICAL). WHEN BRACING AGAINST CRATE SIDES, USE FLOOR LINE BRACING MATERIAL (B) IN LIEU OF (A) MATERIAL.

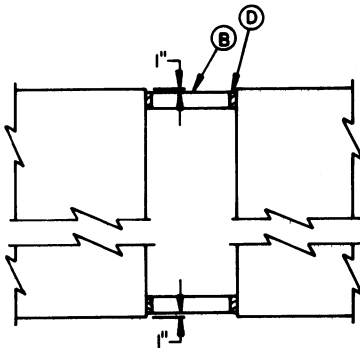
BRACING METHOD I



END VIEW

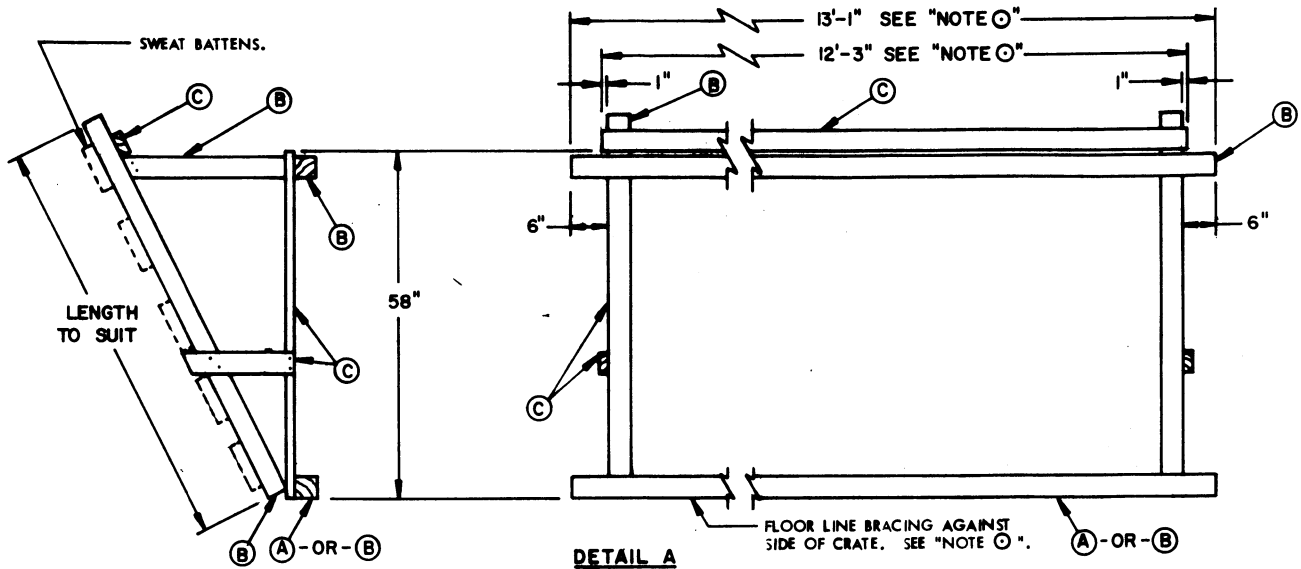
THIS VIEW SHOWS BRACING AGAINST SIDE OF CRATE AND USING FLOOR LINE BRACING MATERIAL (B) (4" X 4"). WHEN BRACING AGAINST CRATE ENDS, USE FLOOR LINE BRACING MATERIAL (A) (4" X 6", 6" VERTICAL) IN LIEU OF (B) MATERIAL.

MINIMUM LUMBER SIZES	
(A)	4" X 6"
(B)	4" X 4"
(C)	2" X 6"
(D)	2" X 4"



**PLAN VIEW
CENTER BLOCKING**

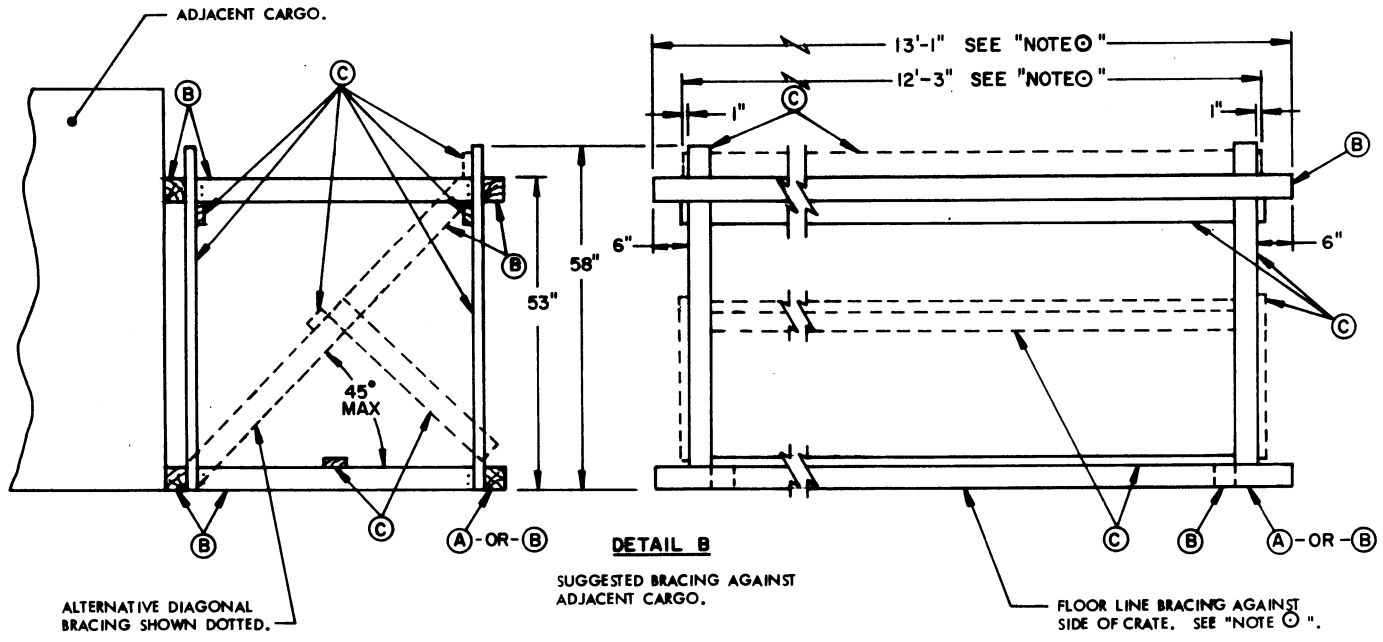
PRECAUTIONARY PROVISIONS FOR HANDLING, STOWAGE AND BRACING AS SPECIFIED IN THE NOTES ON PAGE 2 MUST BE OBSERVED.



DETAIL A
SUGGESTED BRACING AT SIDE OF SHIP.

MINIMUM LUMBER SIZE	
(A)	4" X 6"
(B)	4" X 4"
(C)	2" X 4"

NOTE O:
DIMENSIONS SHOWN ARE FOR BRACING AGAINST SIDE OF CRATE AND USING FLOOR LINE BRACING MATERIAL (B). WHEN BRACING AGAINST CRATE ENDS, CHANGE DIMENSIONS OF THE BRACING ASSEMBLY, USE 61" IN LIEU OF 13'-1" AND 51" IN LIEU OF 12'-3". ALSO, USE FLOOR LINE BRACING MATERIAL (A) (4" X 6", 6" VERTICAL) AGAINST CRATE ENDS IN LIEU OF (B) MATERIAL.



DETAIL B
SUGGESTED BRACING AGAINST ADJACENT CARGO.

PRECAUTIONARY PROVISIONS FOR HANDLING, STOWAGE AND BRACING AS SPECIFIED IN THE NOTES ON PAGE 2 MUST BE OBSERVED.

