

APPROVED BY
MTMTS

Frank L. Paul

TEA, MTMTS

DATE *14 June 1972*

LANCE

MINIMUM REQUIREMENTS FOR THE HANDLING, STOWAGE AND BRACING ABOARD SHIPS OF MOBILITY KIT, GUIDED MISSILE LAUNCHER, XM234

REVISIONS				DRAFTSMAN	PROJ ENG	AMCPM-LCSM
				<i>S.J. / G.S.</i>	<i>JNW/NWY</i>	<i>1972 - LAD</i>
				CHECKER	LOS ENGRS OFFICE	AMSMI-10P
				<i>L.H.S. / B.O.S.</i>	<i>John Boyd</i>	<i>M. S. ...</i>
				APPROVED		
				<i>Wesley E. Gilleland</i>		
				U. S. ARMY MISSILE COMMAND		
				APPROVED BY ORDER OF COMMANDING GENERAL		
				U. S. ARMY MATERIEL COMMAND		
				<i>W. Ehringer</i>		
				U. S. ARMY MATERIEL COMMAND		
				JULY 1972		
				CLASS	DIVISION	DRAWING
				19	48	7260
						FILE
						GSE 18LC4

DO NOT SCALE

NOTES

GENERAL:

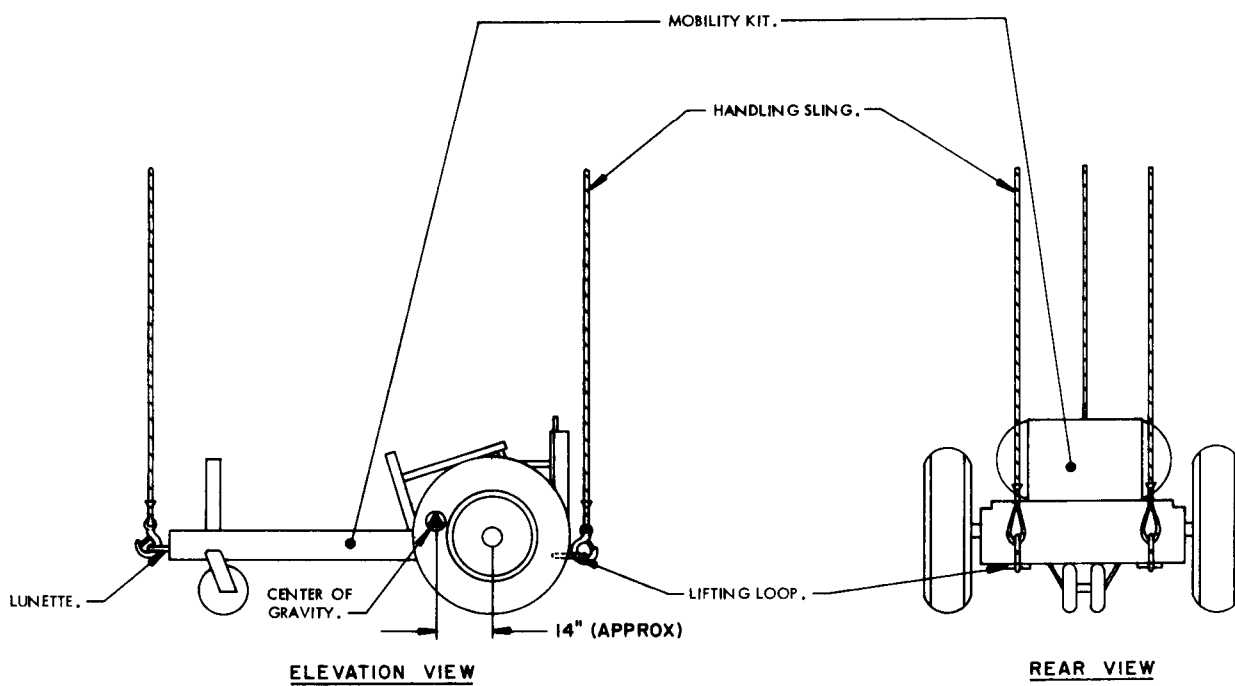
- A. THIS DOCUMENT HAS BEEN PREPARED AND ISSUED IN ACCORDANCE WITH AMCR 740-13.
- B. THIS DRAWING DEPICTS MINIMUM PROCEDURES APPLICABLE TO THE HANDLING, STOWAGE, AND BRACING ABOARD SHIPS OF MOBILITY KIT, GUIDED MISSILE LAUNCHER, XM234, FOR THE LANCE MISSILE SYSTEM.
- C. THE MOBILITY KIT SHOWN HEREIN MAY BE STOWED IN THE SAME HOLD OR TWEEN DECK WITH OTHER TYPES OF CARGO.
- D. LADING DATA:
 - DIMENSIONS -----9'-2" LONG X 6'-6" WIDE X 3'-10" HIGH.
 - GROSS WEIGHT -----1,970 POUNDS (APPROX).
 - CUBE -----203 CU. FT.

HANDLING:

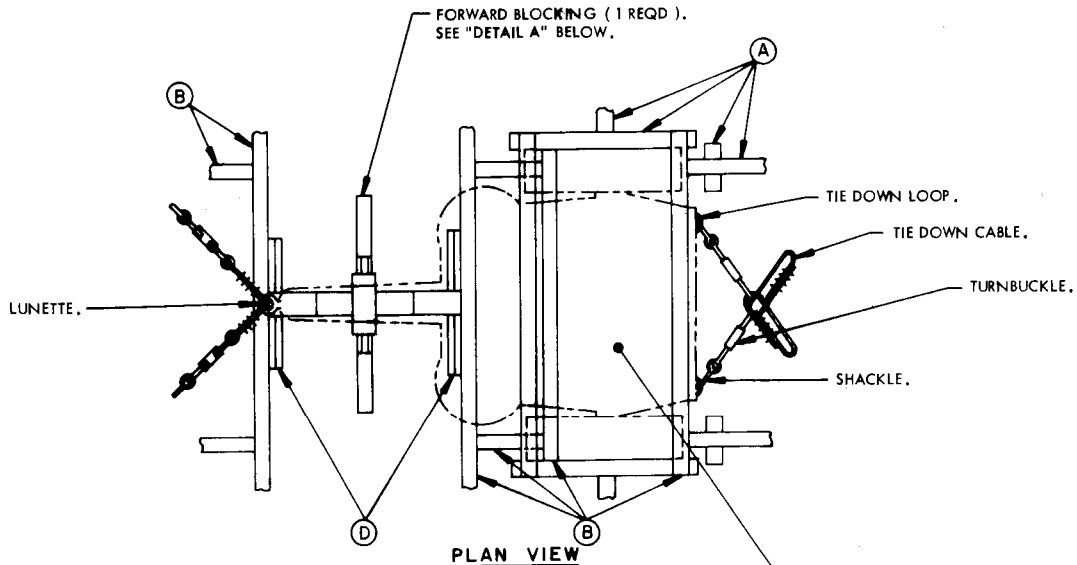
- A. PERTINENT PROVISIONS OF TITLE 46 CODE OF FEDERAL REGULATIONS APPLY.
- B. HANDLING OF THE MOBILITY KIT SHOULD BE ACCOMPLISHED BY USING THE LIFT POINTS DESIGNATED HEREIN.
- C. THE HANDLING SLING SHALL BE OF A DESIGN AND CONFIGURATION TO LIFT THE ITEM IN SUCH A MANNER THAT THE CABLE LEGS DO NOT COME IN CONTACT WITH OR APPLY PRESSURE AGAINST THE FRAMING, SUPERSTRUCTURE OR OTHER MEMBERS OF THE ITEM WHEN BEING LIFTED.
- D. EACH LEG OF THE HANDLING SLING MUST BE SECURELY ATTACHED TO A LIFT POINT PRIOR TO LIFTING.
- E. ALTHOUGH DESIRABLE, A LEVEL LIFT IS NOT MANDATORY. THE CENTER OF GRAVITY OF THIS ITEM IS SHOWN TO ASSIST IN DETERMINING CABLE LENGTHS TO ASSURE A SAFE LIFT.

STOWAGE AND BRACING:

- A. WHEN STOWING THE MOBILITY KIT WITHIN THE HOLD OR TWEEN DECK, BRACING BETWEEN MOBILITY KITS OR BETWEEN A MOBILITY KIT AND OTHER CARGO SHALL ONLY BE APPLIED AGAINST THE WHEELS OF THE MOBILITY KIT. ALSO, OTHER CARGO ITEMS MUST NOT BE STACKED ON TOP OF OR BE BRACED AGAINST ANY OTHER PART OF THE MOBILITY KIT THAN AS IDENTIFIED IMMEDIATELY ABOVE.
- B. SPECIES, GRADE AND SIZE OF LUMBER TO BE USED WILL COMPLY WITH REQUIREMENTS OF CURRENT SHIPWRIGHT-CARPENTRY AND RELATED SERVICES CONTRACTS. BRACING METHODS AND LUMBER SIZES DEPICTED IN THIS DRAWING ARE CONSIDERED MINIMUM AND ARE NOT INTENDED TO CONFLICT WITH CONTRACT REQUIREMENTS.
- C. THE MOBILITY KIT IS EQUIPPED WITH TIE DOWN DEVICES AS SHOWN HEREIN WHICH ARE SYMMETRICAL ABOUT THE LONGITUDINAL LINE OF CENTER. THE MOBILITY KIT SHOULD BE SECURED FORE AND AFT TO SHIP TIE DOWN POINTS USING A MINIMUM OF TWO SYMMETRICALLY LOCATED TIE DOWN DEVICES IN EACH DIRECTION AS TYPICALLY SHOWN WITHIN THIS DOCUMENT.
- D. A TYPICAL TIE DOWN PROCEDURE IS SHOWN AND DEPICTS THE PREFERRED METHOD OF USING CABLES AND TURNBUCKLES. IF USED, A TURNBUCKLE MUST BE OF A SIZE EQUAL IN STRENGTH TO THE MINIMUM SIZE CABLE REQUIRED TO SECURE THE ITEM. IN LIEU OF CABLES AND TURNBUCKLES, SECUREMENT MAY BE ACCOMPLISHED BY OTHER ACCEPTED METHODS.
- E. IN LIEU OF PROVIDING NEW FORWARD BLOCKING FOR STOWING THE MOBILITY KIT, THE FORWARD BLOCKING USED IN TRANSPORTING THE ITEM TO THE PORT BY RAIL OR TRUCK MAY BE REUSED IF AVAILABLE. THE REUSED ASSEMBLY SHALL BE MODIFIED AS REQUIRED TO PERMIT INSTALLATION OF ADJACENT BRACING MEMBERS AS SPECIFIED ON PAGE 4. ANY BROKEN PIECES SHALL BE REPLACED AND THE ASSEMBLY RENAILED AS NECESSARY TO PROVIDE A RIGID SUPPORT.



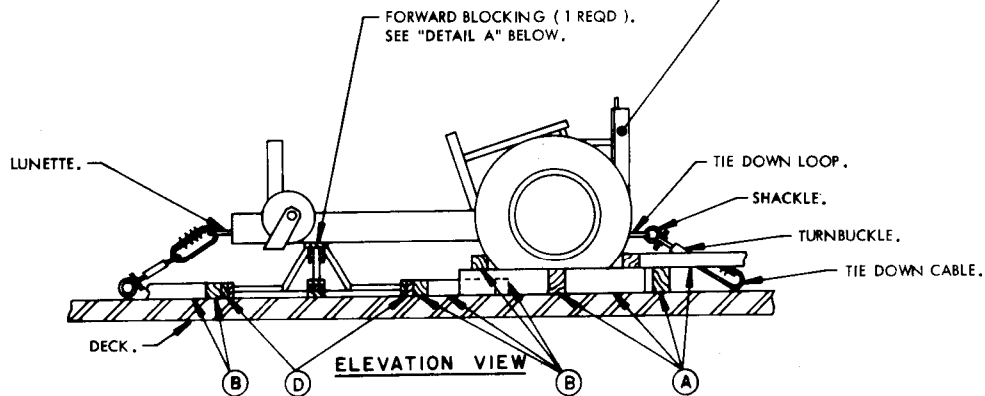
PRECAUTIONARY PROVISIONS FOR HANDLING,
STOWAGE AND BRACING AS SPECIFIED IN
THE NOTES ON PAGE 2 MUST BE OBSERVED.



PLAN VIEW

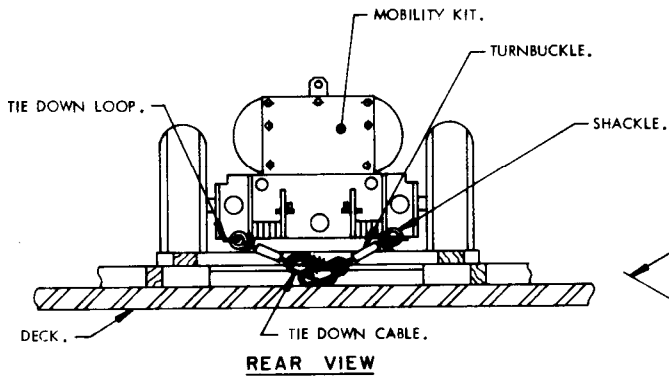
PHANTOM LINES INDICATE TRAILER AND TIRES.

MINIMUM LUMBER SIZES	
(A)	4" X 6"
(B)	4" X 4"
(C)	2" X 6"
(D)	2" X 4"
(E)	1" X 6"

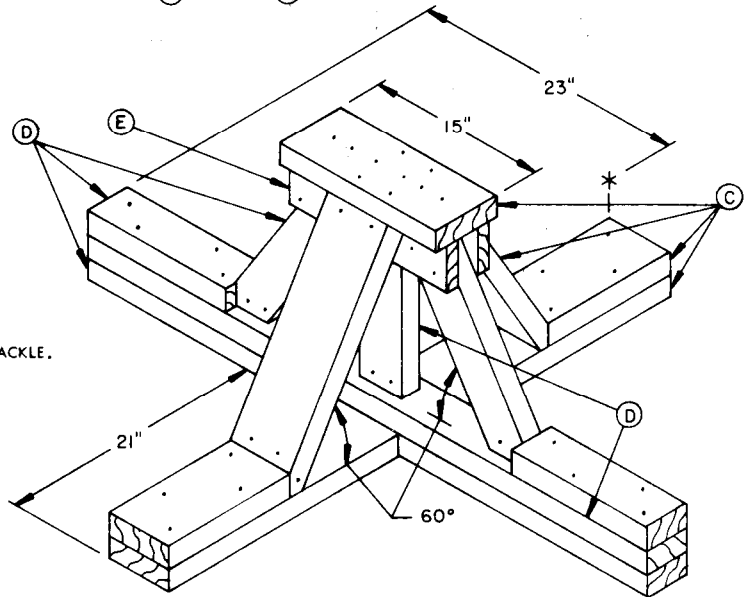


ELEVATION VIEW

PRECAUTIONARY PROVISIONS FOR HANDLING, STOWAGE AND BRACING AS SPECIFIED IN THE NOTES ON PAGE 2 MUST BE OBSERVED.



REAR VIEW



DETAIL A

THE OVERALL DIMENSIONS OF THE ABOVE ASSEMBLY ARE 45-3/4" LONG X 51-1/2" WIDE X 14" HIGH.