

APPROVED BY
MTMTS

Frank L. Paus

TEA, MTMTS

DATE *13 June 1972*

CHAPARRAL

MINIMUM REQUIREMENTS FOR THE HANDLING, STOWAGE, AND BRACING ABOARD SHIPS OF GUIDED MISSILE SYSTEM, INTERCEPT AERIAL, XM54 (CRATED)

REVISIONS				DRAFTSMAN JAM / CKW	PROJ ENG JNW / ALW
				CHECKER JAM / CKW	LIC ENGINE OFFICE John S. ... Mike Gilliland
				APPROVED	<i>Andrew W. Reid</i>
				U. S. ARMY MISSILE COMMAND	
				APPROVED BY ORDER OF COMMANDING GENERAL U. S. ARMY MATERIEL COMMAND	
				<i>W. Elinger</i>	
				USAMC ARMO CENTER	
				U. S. ARMY MATERIEL COMMAND	
				JULY 1972	
				CLASS	DIVISION
				DRAWING	FILE
				19	48
				7257	GSE 18CH2

DO NOT SCALE

NOTES

GENERAL:

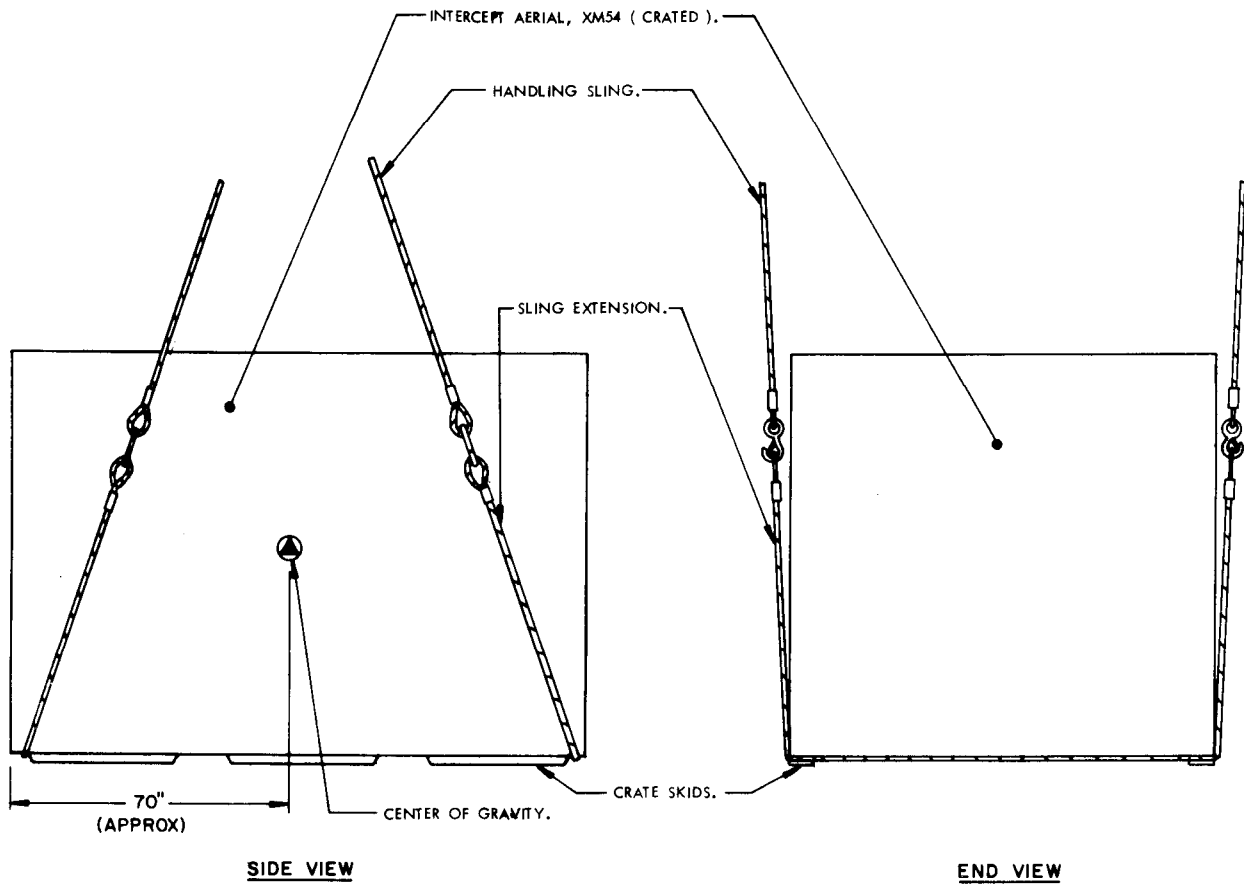
- A. THIS DOCUMENT HAS BEEN PREPARED AND ISSUED IN ACCORDANCE WITH AMCR 740-13.
- B. THIS DRAWING DEPICTS MINIMUM PROCEDURES APPLICABLE TO THE HANDLING, STOWAGE, AND BRACING ABOARD SHIPS OF THE GUIDED MISSILE SYSTEM, INTERCEPT AERIAL, XM54, CRATED, FOR THE CHAPARRAL MISSILE SYSTEM.
- C. OTHER TYPES OF CARGO MAY BE STOWED IN THE SAME HOLD OR TWEEN DECK WITH THE CRATED ITEM SHOWN HEREIN.
- D. LADING DATA:
 - DIMENSIONS OF CRATE (TYPICAL) --- 11'-11-3/4" LONG X 8'-9" WIDE X 8'-6-7/8" HIGH.
 - GROSS WEIGHT ----- 12,270 LBS (APPROX).
 - CUBE ----- 864 CU. FT.

HANDLING:

- A. PERTINENT PROVISIONS OF TITLE 46 CODE OF FEDERAL REGULATIONS APPLY.
- B. HANDLING OF THE CRATED ITEM SHOULD BE ACCOMPLISHED BY USING SLING EXTENSIONS SECURELY POSITIONED IN THE NOTCHES OF THE CRATE SKIDS AS SHOWN.
- C. EACH CRATED ITEM SHALL BE HANDLED INDIVIDUALLY. STACKING OF CRATED ITEMS IS NOT PERMITTED.
- D. THE HANDLING SLING SHALL BE OF A DESIGN AND CONFIGURATION TO LIFT THE ITEM IN SUCH A MANNER THAT THE CABLE LEGS DO NOT APPLY EXCESSIVE PRESSURE WHICH MAY DAMAGE THE CRATE.
- E. ALTHOUGH DESIRABLE, A LEVEL LIFT IS NOT MANDATORY. THE CENTER OF GRAVITY OF THIS ITEM IS SHOWN TO ASSIST IN DETERMINING CABLE LENGTHS TO ASSURE A SAFE LIFT.

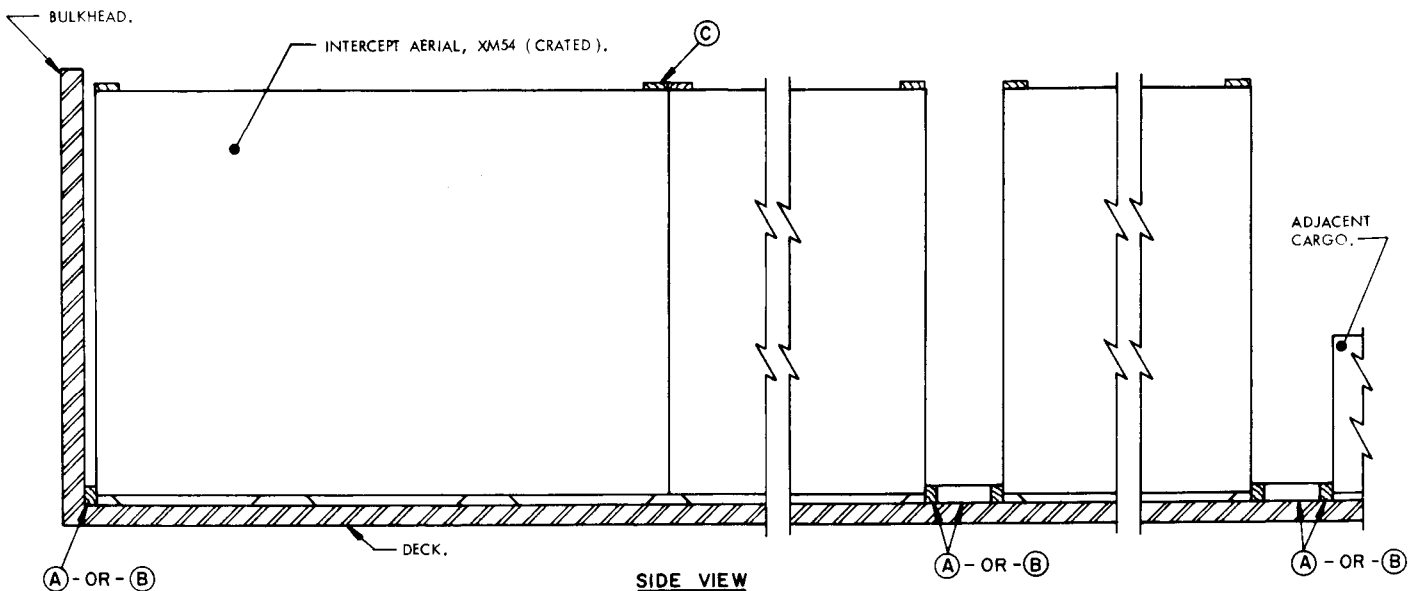
STOWAGE AND BRACING:

- A. STOWAGE OF THIS ITEM IS RESTRICTED TO ONE (1) LAYER HIGH. HOWEVER, OTHER CARGO ITEMS MAY BE OVER-STOWED BY CONSTRUCTING A DUNNAGE FLOOR ON TOP OF THE DEPICTED CRATES. CAUTION: THE WEIGHT OF OVER-STOWED CARGO MUST NOT CRUSH OR OTHERWISE DAMAGE THE CRATES OF THE INTERCEPT AERIAL, XM54.
- B. SPECIES, GRADE AND SIZE OF LUMBER TO BE USED WILL COMPLY WITH REQUIREMENTS OF CURRENT SHIPWRIGHT-CARPENTRY AND RELATED SERVICES CONTRACTS. BRACING METHODS AND LUMBER SIZES DEPICTED IN THIS DRAWING ARE CONSIDERED MINIMUM AND ARE NOT INTENDED TO CONFLICT WITH CONTRACT REQUIREMENTS.



PRECAUTIONARY PROVISIONS FOR HANDLING, STOWAGE AND BRACING AS SPECIFIED IN THE NOTES ON PAGE 2 MUST BE OBSERVED.

← CRATES STOWED LENGTHWISE TO THE SHIP ADJUST LENGTH OF STOWAGE TO SUIT QUANTITY TO BE SHIPPED. →

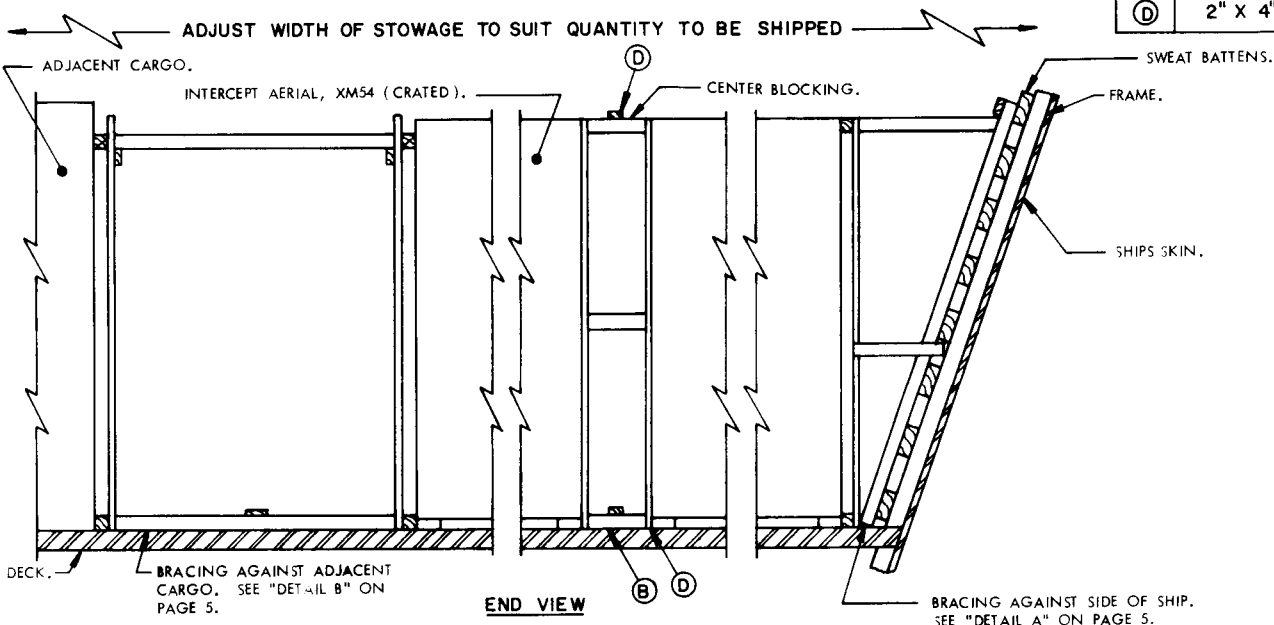


SIDE VIEW

THIS VIEW SHOWS BRACING AGAINST END OF CRATE AND USING FLOOR LINE BRACING MATERIAL (A) (4" X 6", 6" VERTICAL). WHEN BRACING AGAINST CRATE SIDES, USE FLOOR LINE BRACING MATERIAL (B) IN LIEU OF (A) MATERIAL.

MINIMUM LUMBER SIZES	
(A)	4" X 6"
(B)	4" X 4"
(C)	2" X 6"
(D)	2" X 4"

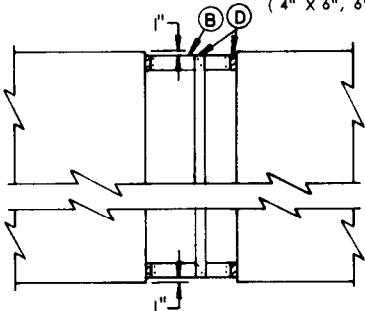
BRACING METHOD I



END VIEW

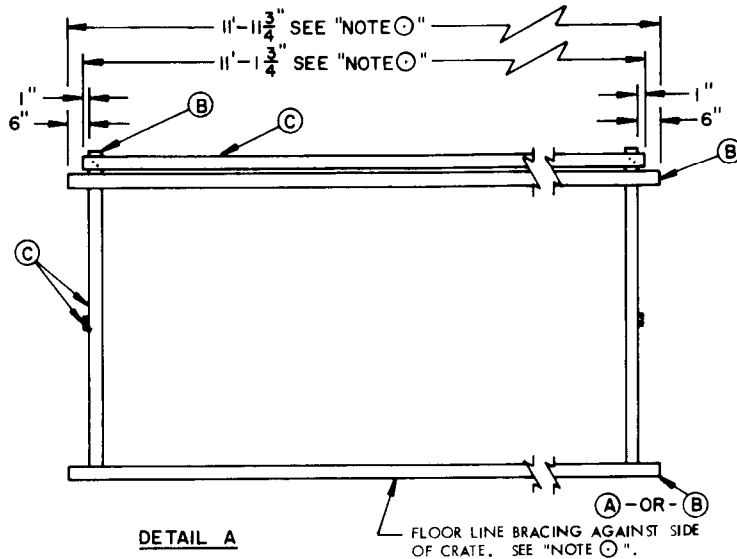
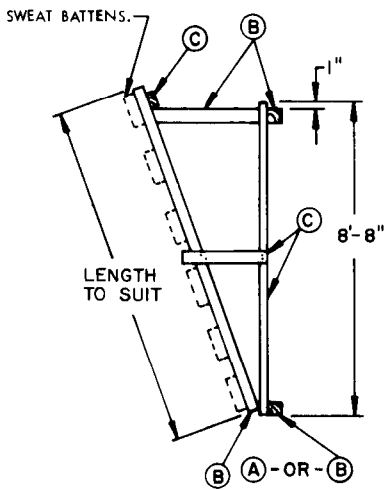
THIS VIEW SHOWS BRACING AGAINST SIDE OF CRATE AND USING FLOOR LINE BRACING MATERIAL (B) (4" X 4"). WHEN BRACING AGAINST CRATE ENDS, USE FLOOR LINE BRACING MATERIAL (A) (4" X 6", 6" VERTICAL) IN LIEU OF (B) MATERIAL.

PRECAUTIONARY PROVISIONS FOR HANDLING, STOWAGE AND BRACING AS SPECIFIED IN THE NOTES ON PAGE 2 MUST BE OBSERVED.



PLAN VIEW CENTER BLOCKING

BRACING METHOD II



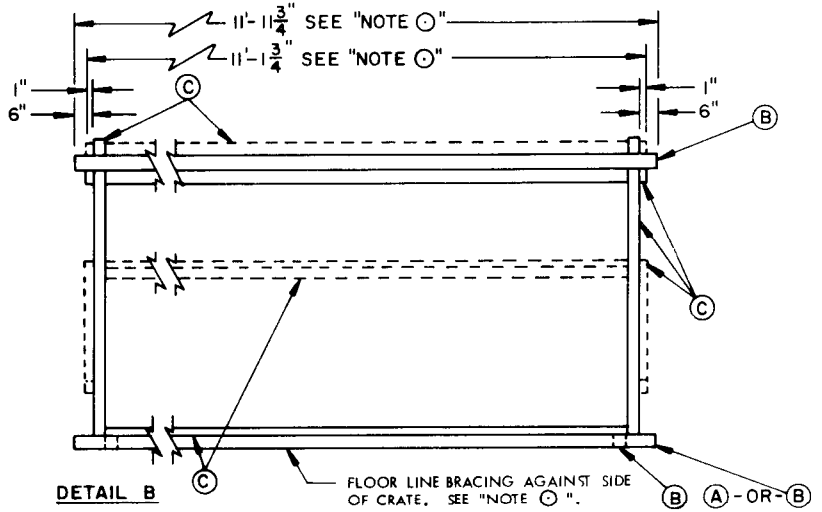
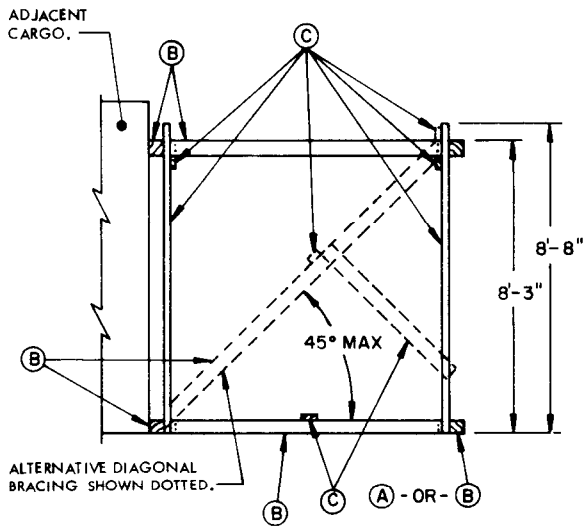
DETAIL A

SUGGESTED BRACING AT SIDE OF SHIP.

NOTE ○ :

DIMENSIONS SHOWN ARE FOR BRACING AGAINST SIDE OF CRATE AND USING FLOOR LINE BRACING MATERIAL (B). WHEN BRACING AGAINST CRATE ENDS, CHANGE THE DIMENSIONS OF THE BRACING ASSEMBLY. USE 8'-9" IN LIEU OF 11'-11-3/4" AND 7'-11" IN LIEU OF 11'-1-3/4". ALSO, USE FLOOR LINE BRACING MATERIAL (A) (4" X 6", 6" VERTICAL) AGAINST CRATE ENDS IN LIEU OF (B) MATERIAL.

MINIMUM LUMBER SIZES	
(A)	4" X 6"
(B)	4" X 4"
(C)	2" X 4"



DETAIL B

SUGGESTED BRACING AGAINST ADJACENT CARGO.

PRECAUTIONARY PROVISIONS FOR HANDLING, STOWAGE AND BRACING AS SPECIFIED IN THE NOTES ON PAGE 2 MUST BE OBSERVED.