

APPROVED BY
MTMTS

Frank L. Lewis

TEA, MTMTS

DATE 3 March 1972

HAWK

MINIMUM REQUIREMENTS FOR THE
HANDLING, STOWAGE, AND BRACING
ABOARD SHIPS OF PLATOON
COMMAND POST AN/MSW-9 AND/OR
INFORMATION AND COORDINATION
CENTRAL AN/MSQ-95, TRAILER
MOUNTED

REVISIONS				DRAFTSMAN <i>John Boyd</i>	PROJ ENG <i>JNW/lewis</i>		
				CHECKER <i>5/8/72</i>	ADE OFFICE <i>John Boyd</i>	AMS: - SP <i>E.A. Baker</i>	
				APPROVED <i>Macie E Johnson</i> U. S. ARMY MISSILE COMMAND			
				APPROVED BY ORDER OF COMMANDING GENERAL U. S. ARMY MATERIEL COMMAND <i>W. E. Ching</i> USAMC AMMO CENTER			
				U. S. ARMY MATERIEL COMMAND			
				MARCH 1972			
				CLASS	DIVISION	DRAWING	FILE
				19	48	7254	GSE 18HA10

DO NOT SCALE

NOTES

GENERAL:

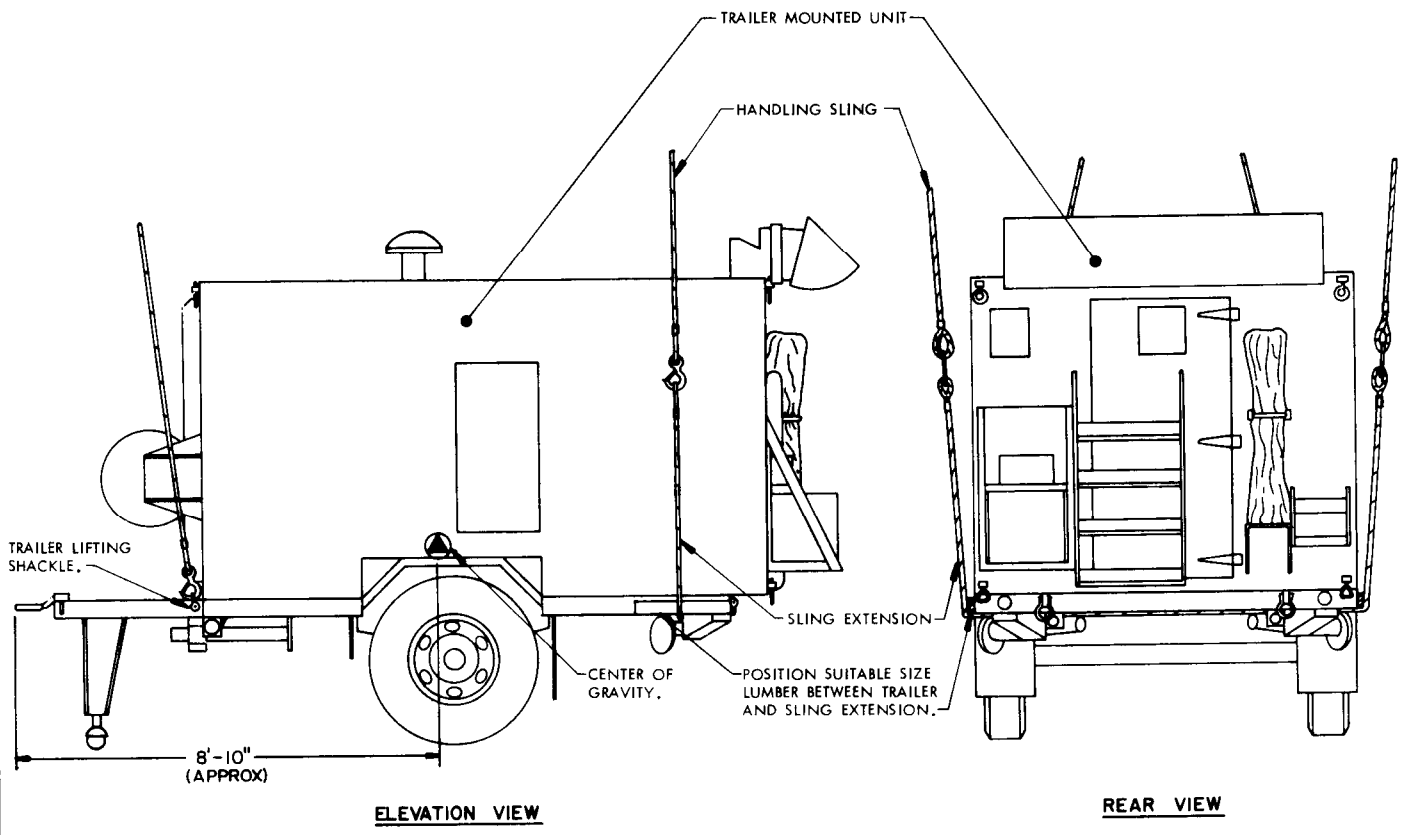
- A. THIS DOCUMENT HAS BEEN PREPARED AND ISSUED IN ACCORDANCE WITH AMCR 740-13.
- B. THIS DRAWING DEPICTS MINIMUM PROCEDURES APPLICABLE TO THE HANDLING, STOWAGE, AND BRACING ABOARD SHIPS OF THE PLATOON COMMAND POST AN/MSW-9 AND/OR INFORMATION AND COORDINATION CENTRAL AN/MSQ-95, TRAILER MOUNTED, FOR THE HAWK MISSILE SYSTEM.
- C. THE TRAILER MOUNTED UNIT SHOWN HEREIN MAY BE STOWED IN THE SAME HOLD OR TWEEN DECK WITH OTHER TYPES OF CARGO.
- D. LADING DATA:
 1. AN/MSW-9
DIMENSIONS ----- 17'-9-1/8" LONG X 8'-0" WIDE X 10'-11" HIGH.
GROSS WEIGHT ----- 8,823 LBS (APPROX).
CUBE ----- 1,556 CU. FT.
 2. AN/MSQ-95
DIMENSIONS ----- 17'-9-1/8" LONG X 8'-0" WIDE X 10'-11" HIGH.
GROSS WEIGHT ----- 8,400 LBS (APPROX).
CUBE ----- 1,556 CU. FT.

HANDLING:

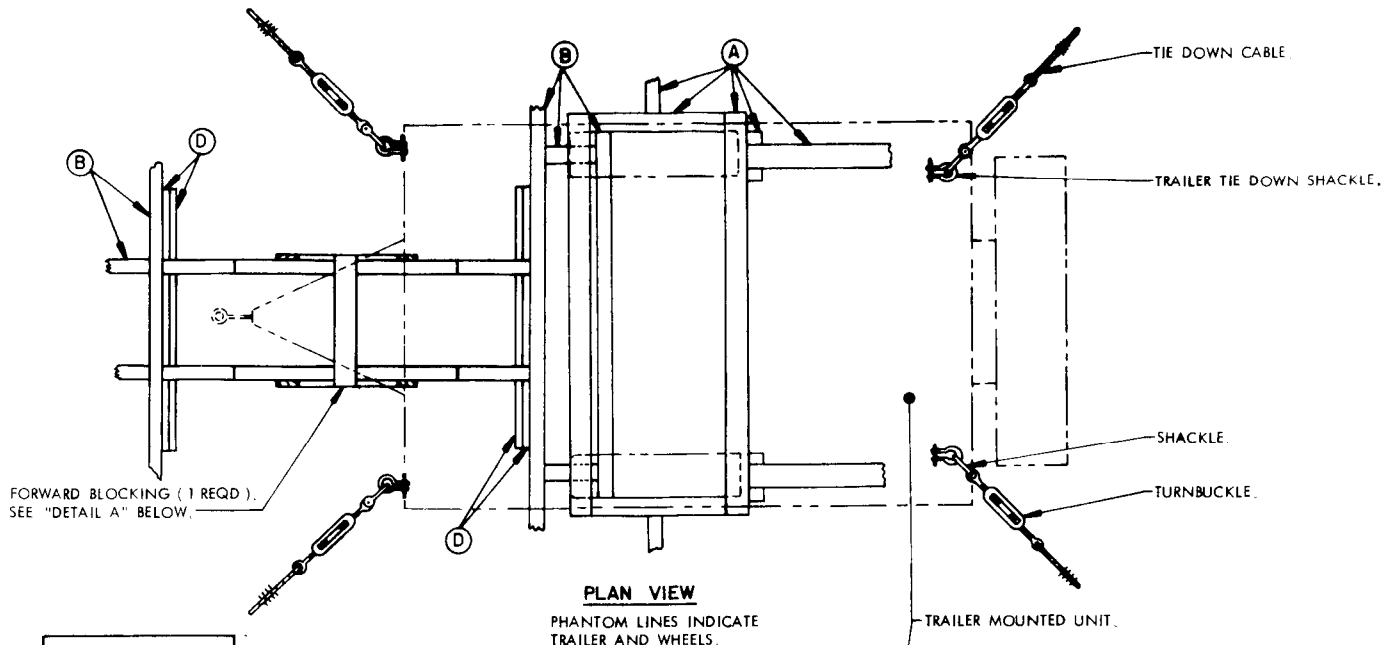
- A. PERTINENT PROVISIONS OF TITLE 46 CODE OF FEDERAL REGULATIONS APPLY.
- B. HANDLING OF THE TRAILER MOUNTED UNIT SHOULD BE ACCOMPLISHED BY USING THE LIFT POINTS AT THE FRONT OF THE TRAILER AND THE USE OF A SLING EXTENSION POSITIONED UNDER THE FRAME AT THE REAR OF THE TRAILER AS SHOWN.
- C. THE HANDLING SLING SHALL BE OF A DESIGN AND CONFIGURATION TO LIFT THE ITEM IN SUCH A MANNER THAT THE CABLE LEGS DO NOT APPLY EXCESSIVE PRESSURE AGAINST THE FRAMING, SUPERSTRUCTURE OR OTHER MEMBERS OF THE ITEM, WHICH MAY DAMAGE THE ITEM.
- D. EACH LEG OF THE HANDLING SLING MUST BE SECURELY ATTACHED TO A LIFT POINT OR A SLING EXTENSION PRIOR TO LIFTING.
- E. ALTHOUGH DESIRABLE, A LEVEL LIFT IS NOT MANDATORY. THE CENTER OF GRAVITY OF THIS ITEM IS SHOWN TO ASSIST IN DETERMINING CABLE LENGTHS TO ASSURE A SAFE LIFT.

STOWAGE AND BRACING:

- A. WHEN STOWING THE TRAILER MOUNTED UNIT WITHIN THE HOLD OR TWEEN DECK, BRACING BETWEEN TRAILERS OR BETWEEN A TRAILER AND OTHER CARGO SHALL ONLY BE APPLIED AGAINST THE WHEELS OF THE TRAILER. ALSO, OTHER CARGO ITEMS MUST NOT BE STACKED ON TOP OF OR BE BRACED AGAINST ANY OTHER PART OF THE TRAILER MOUNTED UNIT THAN AS IDENTIFIED IMMEDIATELY ABOVE.
- B. SPECIES, GRADE AND SIZE OF LUMBER TO BE USED WILL COMPLY WITH REQUIREMENTS OF CURRENT SHIPWRIGHT-CARPENTRY AND RELATED SERVICES CONTRACTS. BRACING METHODS AND LUMBER SIZES DEPICTED IN THIS DRAWING ARE CONSIDERED MINIMUM AND ARE NOT INTENDED TO CONFLICT WITH CONTRACT REQUIREMENTS.
- C. THE TRAILER IS EQUIPPED WITH TIE DOWN DEVICES AS SHOWN HEREIN WHICH ARE SYMMETRICAL ABOUT THE LONGITUDINAL LINE OF CENTER. THE ITEM SHOULD BE SECURED FORE AND AFT TO SHIP TIE DOWN POINTS USING A MINIMUM OF TWO SYMMETRICALLY LOCATED TIE DOWN DEVICES IN EACH DIRECTION AS TYPICALLY SHOWN WITHIN THIS DOCUMENT.
- D. A TYPICAL TIE DOWN PROCEDURE IS SHOWN AND DEPICTS THE PREFERRED METHOD OF USING CABLES AND TURNBUCKLES. IF USED, A TURNBUCKLE MUST BE OF A SIZE EQUAL IN STRENGTH TO THE MINIMUM SIZE CABLE REQUIRED TO SECURE THE ITEM. IN LIEU OF CABLES AND TURNBUCKLES, SECUREMENT MAY BE ACCOMPLISHED BY OTHER ACCEPTED METHODS.
- E. IN LIEU OF PROVIDING NEW FORWARD BLOCKING FOR STOWING THE TRAILER, THE FORWARD BLOCKING USED IN TRANSPORTING THE ITEM TO THE PORT BY RAIL OR TRUCK MAY BE REUSED IF AVAILABLE. THE REUSED ASSEMBLY SHALL BE MODIFIED AS REQUIRED TO REPLACE THE LATERAL DIAGONAL BRACES AND TO PERMIT INSTALLATION OF ADJACENT BRACING MEMBERS AS SPECIFIED ON PAGE 4. ANY BROKEN PIECES SHALL BE REPLACED AND THE ASSEMBLY RENAILED AS NECESSARY TO PROVIDE A RIGID SUPPORT



PRECAUTIONARY PROVISIONS FOR HANDLING, STOWAGE AND BRACING AS SPECIFIED IN THE NOTES ON PAGE 2 MUST BE OBSERVED.



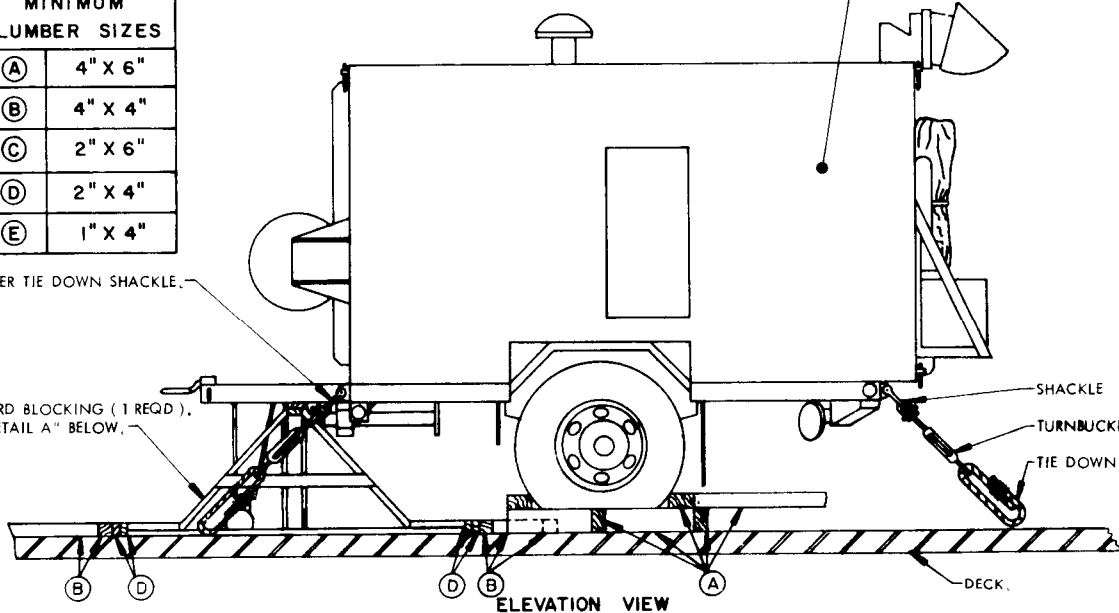
PLAN VIEW

PHANTOM LINES INDICATE TRAILER AND WHEELS.

MINIMUM LUMBER SIZES	
(A)	4" X 6"
(B)	4" X 4"
(C)	2" X 6"
(D)	2" X 4"
(E)	1" X 4"

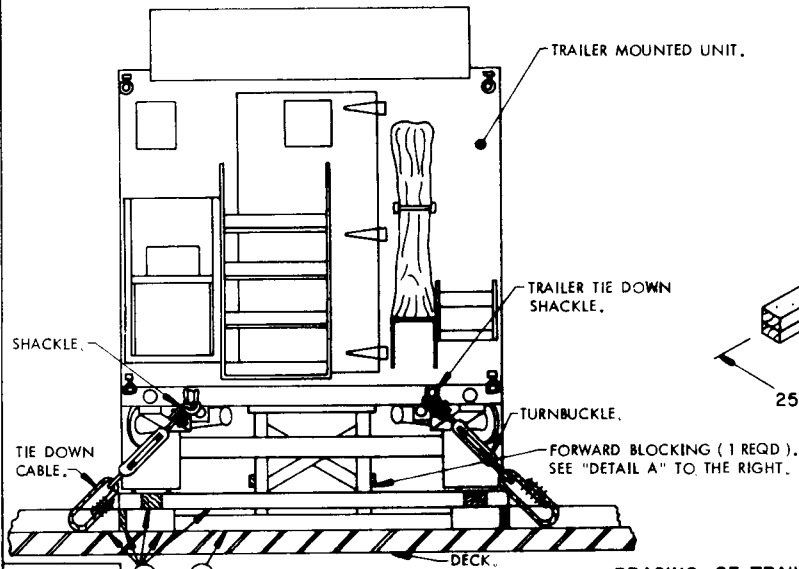
TRAILER TIE DOWN SHACKLE.

FORWARD BLOCKING (1 REQD), SEE "DETAIL A" BELOW.

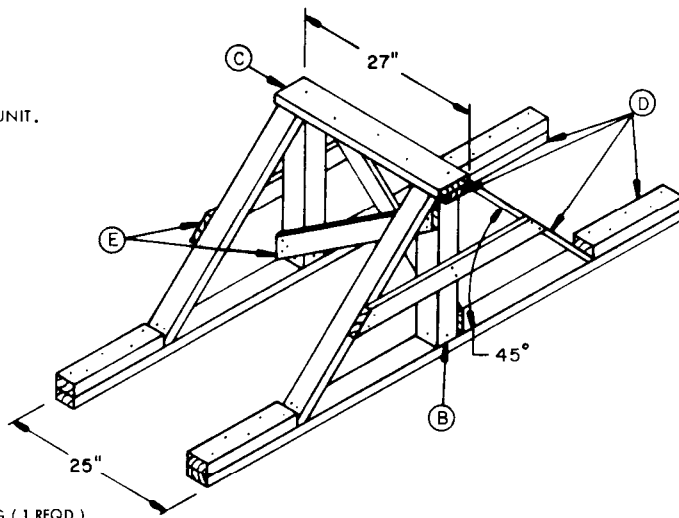


ELEVATION VIEW

PRECAUTIONARY PROVISIONS FOR HANDLING, STOWAGE AND BRACING AS SPECIFIED IN THE NOTES ON PAGE 2 MUST BE OBSERVED.



REAR VIEW



DETAIL A

THE OVERALL DIMENSIONS OF THE ABOVE ASSEMBLY ARE 7'-8" LONG X 27" WIDE X 28-1/2" HIGH.

BRACING OF TRAILER