

APPROVED BY

MTMTS

Frank L. Paus
TEA, MTMTS

DATE *8 May 1972*

LANCE

MINIMUM REQUIREMENTS FOR THE HANDLING, STOWAGE, AND BRACING ABOARD SHIPS OF LAUNCHER, ZERO LENGTH, GUIDED MISSILE, XM740

REVISIONS				DRAFTSMAN	PROJ ENG	AMCPM - LCBM
				<i>XB</i> / <i>CKW</i>	<i>JNY</i> / <i>Maus</i>	<i>Don</i> / <i>ABD</i>
				<i>200</i> / <i>200</i>	<i>John Boyd</i>	<i>MS</i>
				APPROVED		
				<i>Morris E Johnson</i>		
				U. S. ARMY MISSILE COMMAND		
				APPROVED BY ORDER OF COMMANDING GENERAL		
				U. S. ARMY MATERIEL COMMAND		
				<i>Paul S. Barrett</i>		
				USAMC ARMO CENTER		
				U. S. ARMY MATERIEL COMMAND		
				MAY 1972		
				CLASS	DIVISION	DRAWING
				19	48	7233
						FILE
						GSE 18LC3

DO NOT SCALE

NOTES

GENERAL:

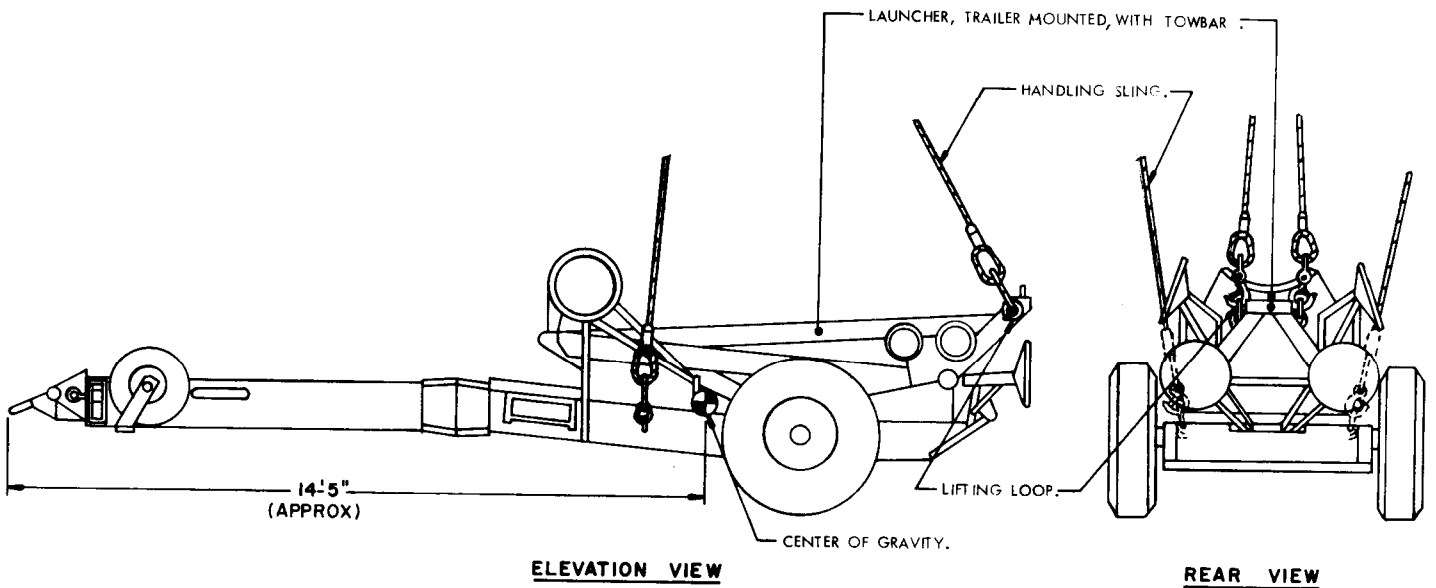
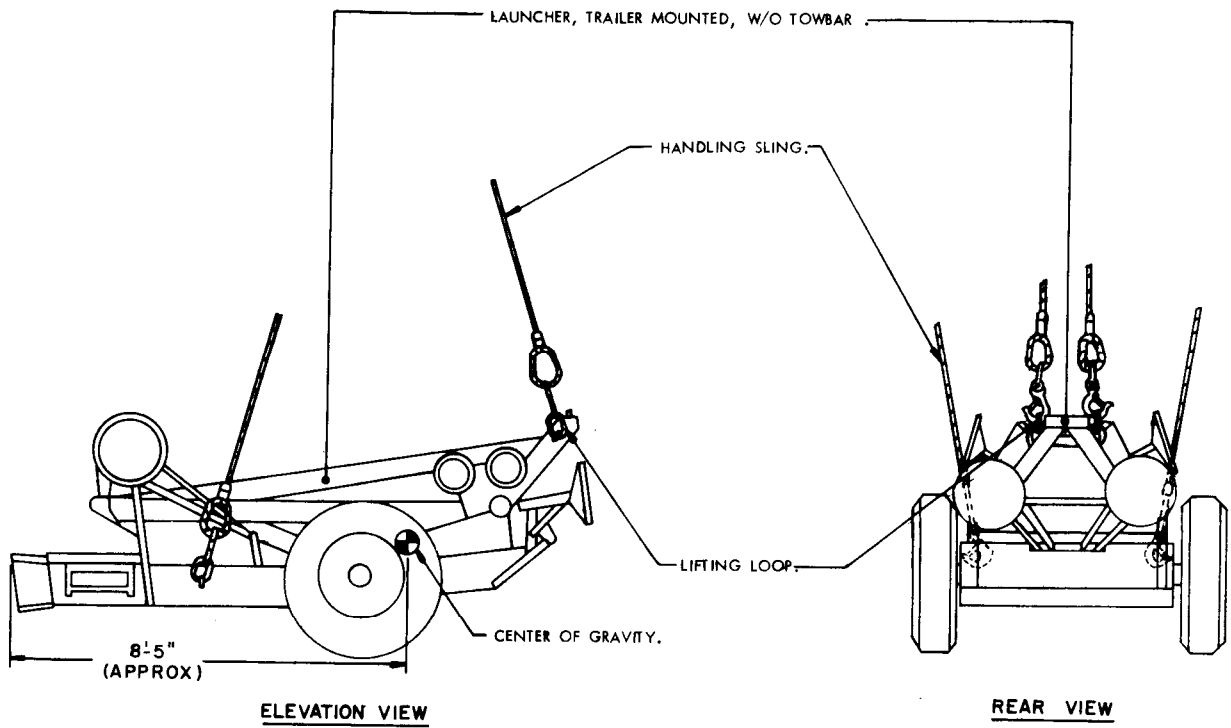
- A. THIS DOCUMENT HAS BEEN PREPARED AND ISSUED IN ACCORDANCE WITH AMCR 740-13.
- B. THIS DRAWING DEPICTS MINIMUM PROCEDURES APPLICABLE TO THE HANDLING, STOWAGE, AND BRACING ABOARD SHIPS OF LAUNCHER, ZERO LENGTH, GUIDED MISSILE, XM 740, FOR THE LANCE MISSILE SYSTEM.
- C. THE LAUNCHER SHOWN HEREIN MAY BE STOWED IN THE SAME HOLD OR TWEEN DECK WITH OTHER TYPES OF CARGO.
- D. LADING DATA:
 1. LAUNCHER WITHOUT TOWBAR:
DIMENSIONS ----- 11'-11-3/4" LONG X 6'-6" WIDE X 5'-5-1/2" HIGH.
GROSS WEIGHT ----- 2,904 POUNDS (APPROX).
CUBE ----- 425.0 CU. FT.
 2. LAUNCHER WITH TOWBAR:
DIMENSIONS ----- 21'-0-1/2" LONG X 6'-6" WIDE X 5'-5-1/2" HIGH.
GROSS WEIGHT ----- 3,210 POUNDS (APPROX).
CUBE ----- 746.5 CU. FT.

HANDLING:

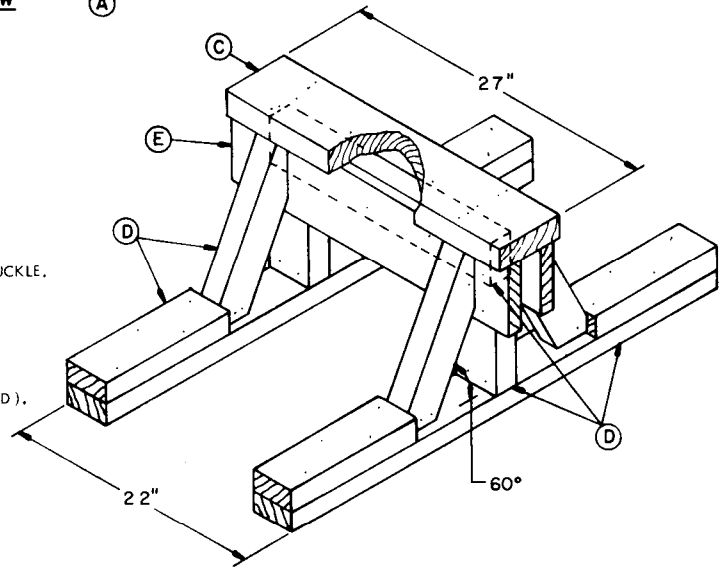
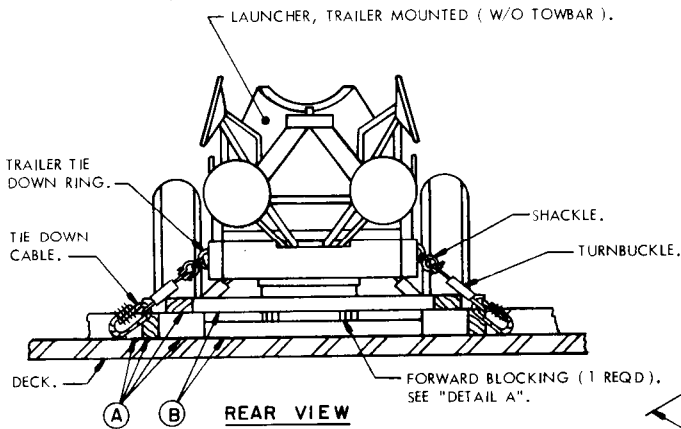
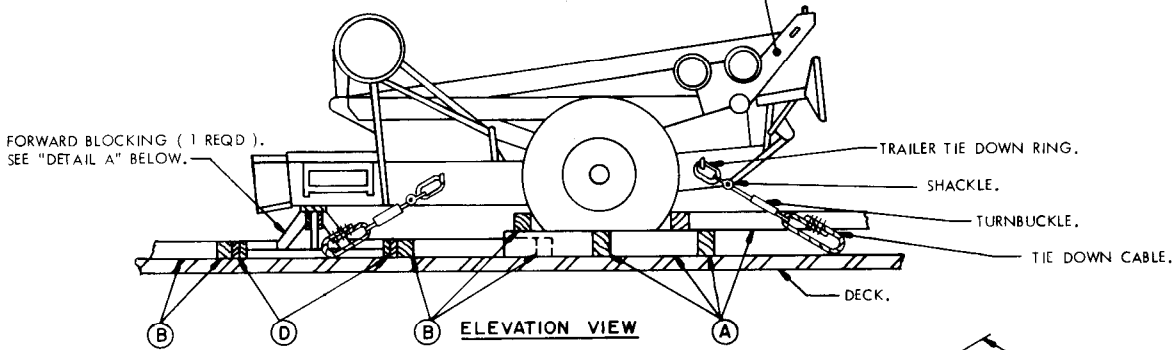
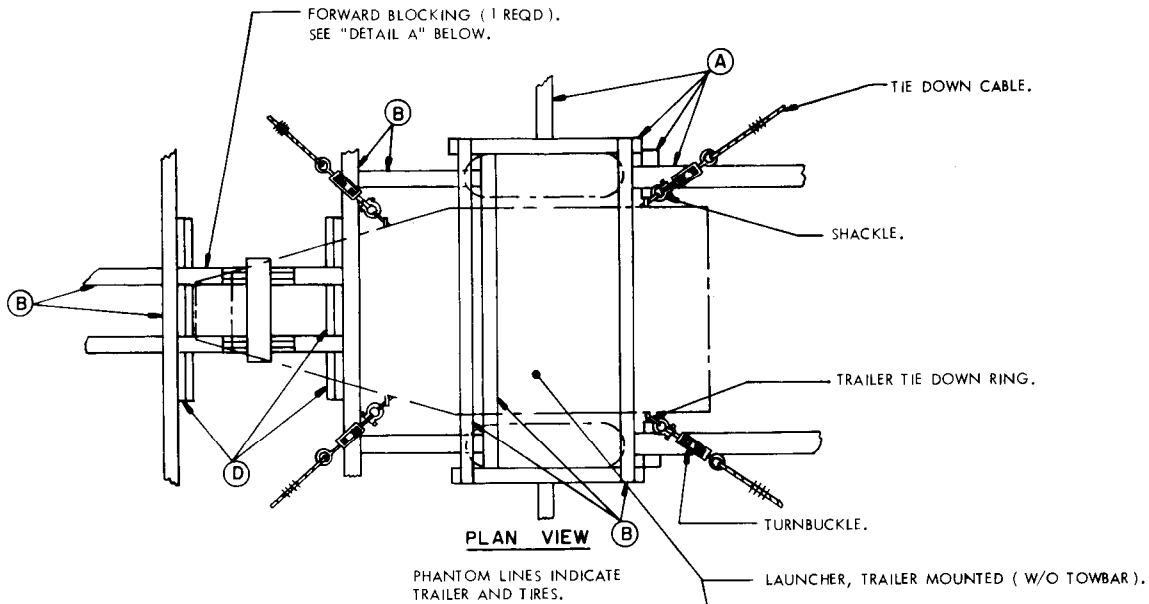
- A. PERTINENT PROVISIONS OF TITLE 46 CODE OF FEDERAL REGULATIONS APPLY.
- B. HANDLING OF THE LAUNCHER SHOULD BE ACCOMPLISHED BY USING THE LIFT POINTS DESIGNATED HEREIN.
- C. THE HANDLING SLING SHALL BE OF A DESIGN AND CONFIGURATION TO LIFT THE ITEM IN SUCH A MANNER THAT THE CABLE LEGS DO NOT COME IN CONTACT WITH OR APPLY PRESSURE AGAINST THE FRAMING, SUPERSTRUCTURE OR OTHER MEMBERS OF THE ITEM WHEN BEING LIFTED.
- D. EACH LEG OF THE HANDLING SLING MUST BE SECURELY ATTACHED TO A LIFT POINT PRIOR TO LIFTING.
- E. ALTHOUGH DESIRABLE, A LEVEL LIFT IS NOT MANDATORY. THE CENTER OF GRAVITY OF THIS ITEM IS SHOWN TO ASSIST IN DETERMINING CABLE LENGTHS TO ASSURE A SAFE LIFT.

STOWAGE AND BRACING:

- A. WHEN STOWING THE LAUNCHER WITHIN THE HOLD OR TWEEN DECK, BRACING BETWEEN LAUNCHERS OR BETWEEN A LAUNCHER AND OTHER CARGO SHALL ONLY BE APPLIED AGAINST THE WHEELS OF THE LAUNCHER. ALSO, OTHER CARGO ITEMS MUST NOT BE STACKED ON TOP OF OR BE BRACED AGAINST ANY OTHER PART OF THE LAUNCHER THAN AS IDENTIFIED IMMEDIATELY ABOVE.
- B. SPECIES, GRADE AND SIZE OF LUMBER TO BE USED WILL COMPLY WITH REQUIREMENTS OF CURRENT SHIPWRIGHT-CARPENTRY AND RELATED SERVICES CONTRACTS. BRACING METHODS AND LUMBER SIZES DEPICTED IN THIS DRAWING ARE CONSIDERED MINIMUM AND ARE NOT INTENDED TO CONFLICT WITH CONTRACT REQUIREMENTS.
- C. THE LAUNCHER IS EQUIPPED WITH TIE DOWN DEVICES AS SHOWN HEREIN WHICH ARE SYMMETRICAL ABOUT THE LONGITUDINAL LINE OF CENTER. THE LAUNCHER SHOULD BE SECURED FORE AND AFT TO SHIP TIE DOWN POINTS USING A MINIMUM OF TWO SYMMETRICALLY LOCATED TIE DOWN DEVICES IN EACH DIRECTION. ADDITIONALLY, WHEN SECURING THE LAUNCHER (WITH TOWBAR); TWO (2) TIE DOWN DEVICES WILL BE ATTACHED TO THE END OF THE TOWBAR AS TYPICALLY SHOWN WITHIN THIS DOCUMENT.
- D. A TYPICAL TIE DOWN PROCEDURE IS SHOWN AND DEPICTS THE PREFERRED METHOD OF USING CABLES AND TURNBUCKLES. IF USED, A TURNBUCKLE MUST BE OF A SIZE EQUAL IN STRENGTH TO THE MINIMUM SIZE CABLE REQUIRED TO SECURE THE ITEM. IN LIEU OF CABLES AND TURNBUCKLES, SECUREMENT MAY BE ACCOMPLISHED BY OTHER ACCEPTED METHODS.
- E. IN LIEU OF PROVIDING NEW FORWARD BLOCKING FOR STOWING THE LAUNCHER, THE FORWARD BLOCKING USED IN TRANSPORTING THE ITEMS TO THE PORT BY RAIL OR TRUCK MAY BE REUSED IF AVAILABLE. THE REUSED ASSEMBLY SHALL BE MODIFIED AS REQUIRED TO PERMIT INSTALLATION OF ADJACENT BRACING MEMBERS AS SPECIFIED ON PAGES 4 AND 5. ANY BROKEN PIECES SHALL BE REPLACED AND THE ASSEMBLY RENAILED AS NECESSARY TO PROVIDE A RIGID SUPPORT.
- F. IF THE TOWBAR IS SHIPPED SEPARATELY, IT MAY BE STOWED WITH GENERAL CARGO ITEMS, IN ACCORDANCE WITH ACCEPTED STANDARD PROCEDURES.



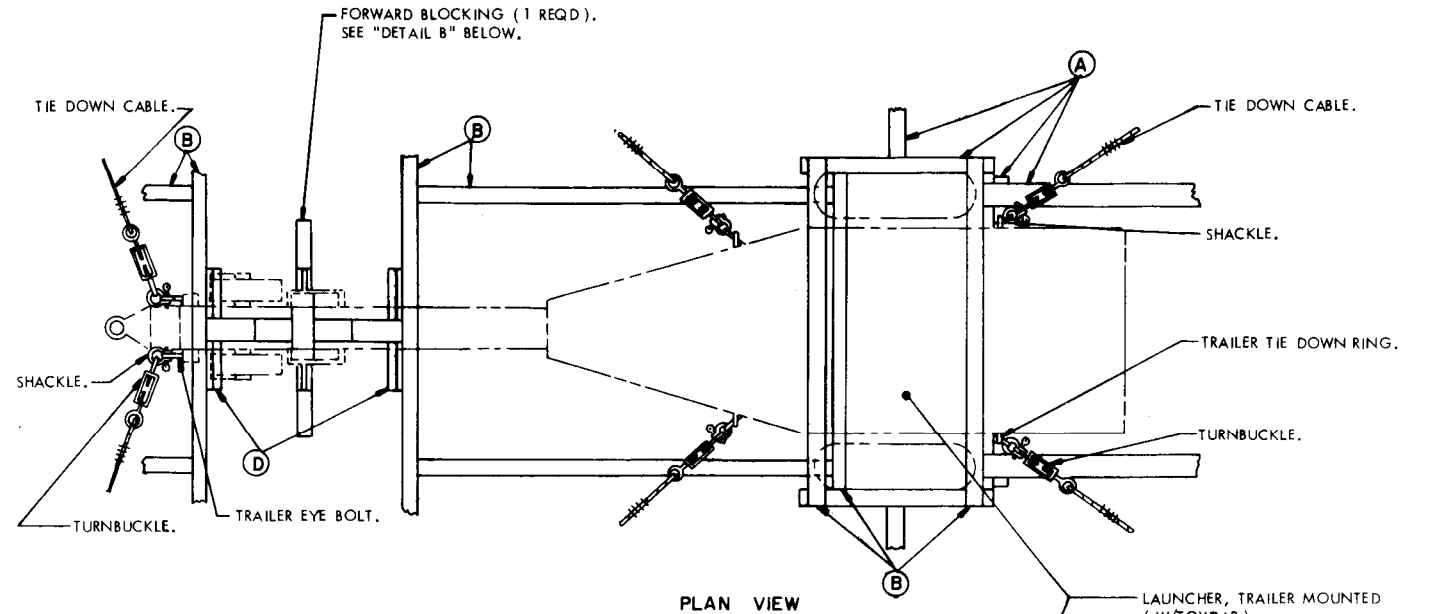
PRECAUTIONARY PROVISIONS FOR HANDLING,
STOWAGE AND BRACING AS SPECIFIED IN
THE NOTES ON PAGE 2 MUST BE OBSERVED



PRECAUTIONARY PROVISIONS FOR HANDLING, STOWAGE AND BRACING AS SPECIFIED IN THE NOTES ON PAGE 2 MUST BE OBSERVED.

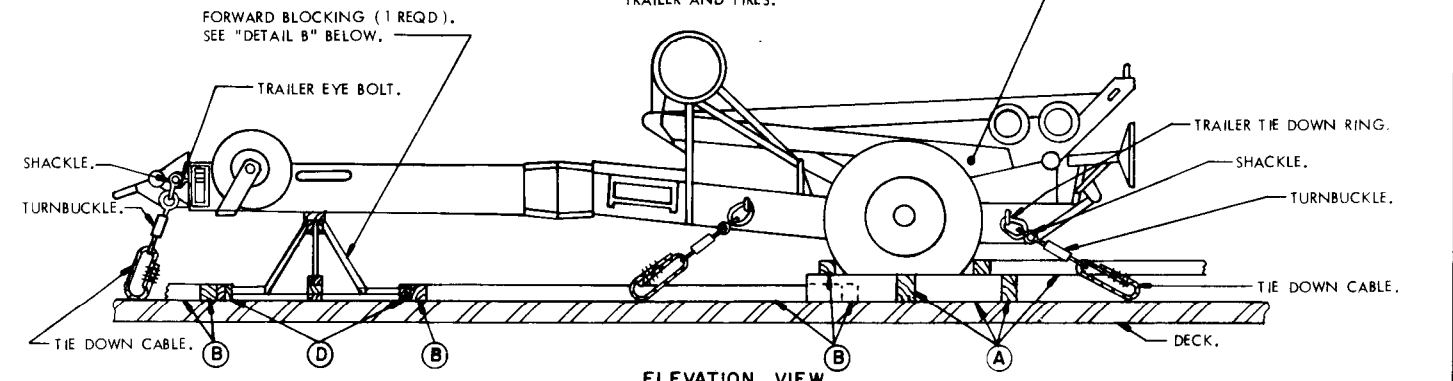
MINIMUM LUMBER SIZES	
(A)	4" X 6"
(B)	4" X 4"
(C)	2" X 6"
(D)	2" X 4"
(E)	1" X 6"

THE OVERALL DIMENSIONS OF THE ABOVE ASSEMBLY ARE 42" LONG X 27" WIDE X 15" HIGH.

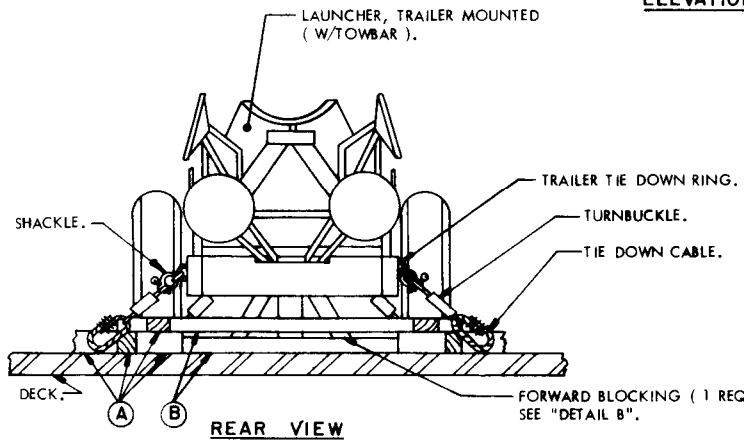


PLAN VIEW

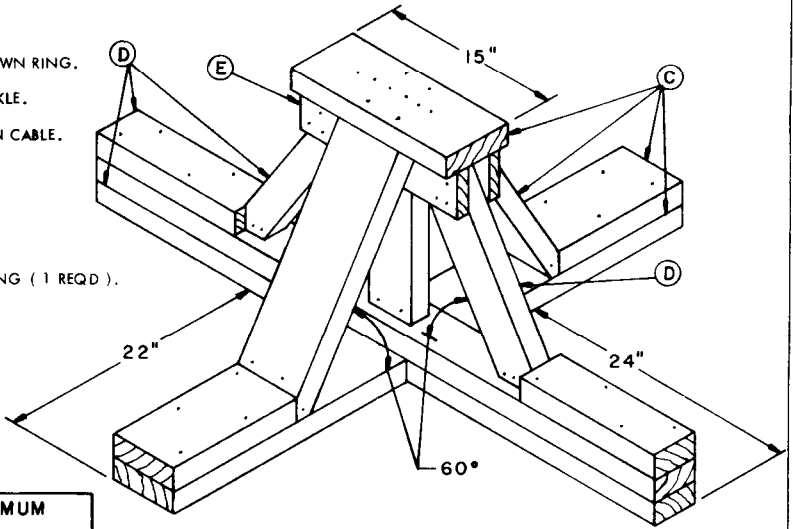
PHANTOM LINES INDICATE TRAILER AND TIRES.



ELEVATION VIEW



REAR VIEW



DETAIL B

THE OVERALL DIMENSIONS OF THE ABOVE ASSEMBLY ARE 48" LONG X 54" WIDE X 20-3/4" HIGH.

PRECAUTIONARY PROVISIONS FOR HANDLING, STOWAGE AND BRACING AS SPECIFIED IN THE NOTES ON PAGE 2 MUST BE OBSERVED.

MINIMUM LUMBER SIZES	
(A)	4" X 6"
(B)	4" X 4"
(C)	2" X 6"
(D)	2" X 4"
(E)	1" X 4"