

APPROVED BY
MTMTS

Frank L. Pans
TEA, MTMTS

DATE *8 May 1972*

LANCE

MINIMUM REQUIREMENTS FOR THE HANDLING, STOWAGE, AND BRACING ABOARD SHIPS OF LOADER-TRANSPORTER, GUIDED MISSILE, XM688E1

REVISIONS				DRAFTER	PROJ ENG	ANEPN-LCOR
				<i>210 Rec</i>	<i>JNW/NEW</i>	<i>001 100</i>
				U.S. ARMY MATERIEL COMMAND	U.S. ARMY MATERIEL COMMAND	U.S. ARMY MATERIEL COMMAND
				<i>Morris E. Johnson</i> U.S. ARMY MATERIEL COMMAND		
				<i>Paul A. Barrett</i> U.S. ARMY MATERIEL COMMAND		
				U. S. ARMY MATERIEL COMMAND		
				MAY 1972		
				CLASS	DIVISION	DRAWING
				19	48	7232
						GSE 18LC2

DO NOT SCALE

NOTES

GENERAL:

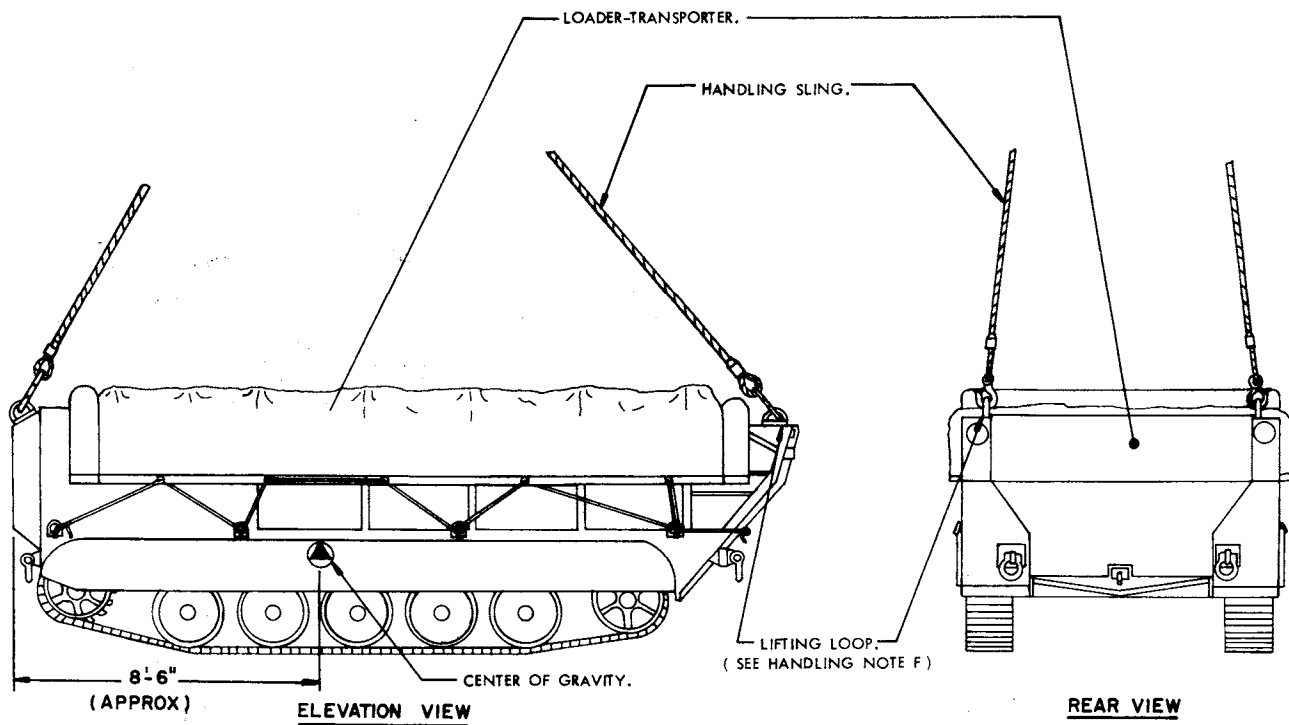
- A. THIS DOCUMENT HAS BEEN PREPARED AND ISSUED IN ACCORDANCE WITH AMCR 740-13.
- B. THIS DRAWING DEPICTS MINIMUM PROCEDURES APPLICABLE TO THE HANDLING, STOWAGE, AND BRACING ABOARD SHIPS OF THE LOADER-TRANSPORTER, GUIDED MISSILE, XM688E1, FOR THE LANCE MISSILE SYSTEM.
- C. THE LOADER-TRANSPORTER SHOWN HEREIN MAY BE STOWED IN THE SAME HOLD OR TWEEN DECK WITH OTHER TYPES OF CARGO. HOWEVER, IF THIS ITEM IS TO BE STOWED ADJACENT TO DANGEROUS ARTICLES, PERTINENT REQUIREMENTS OF COAST GUARD REGULATION NO. CG 108 MUST BE APPLIED.
- D. LADING DATA:
 - DIMENSIONS ----- 21'-6" LONG X 8'-10" WIDE X 7'-6" HIGH.
 - GROSS WEIGHT ----- 15,765 LBS (APPROX).
 - CUBE ----- 1,424 CU. FT.

HANDLING:

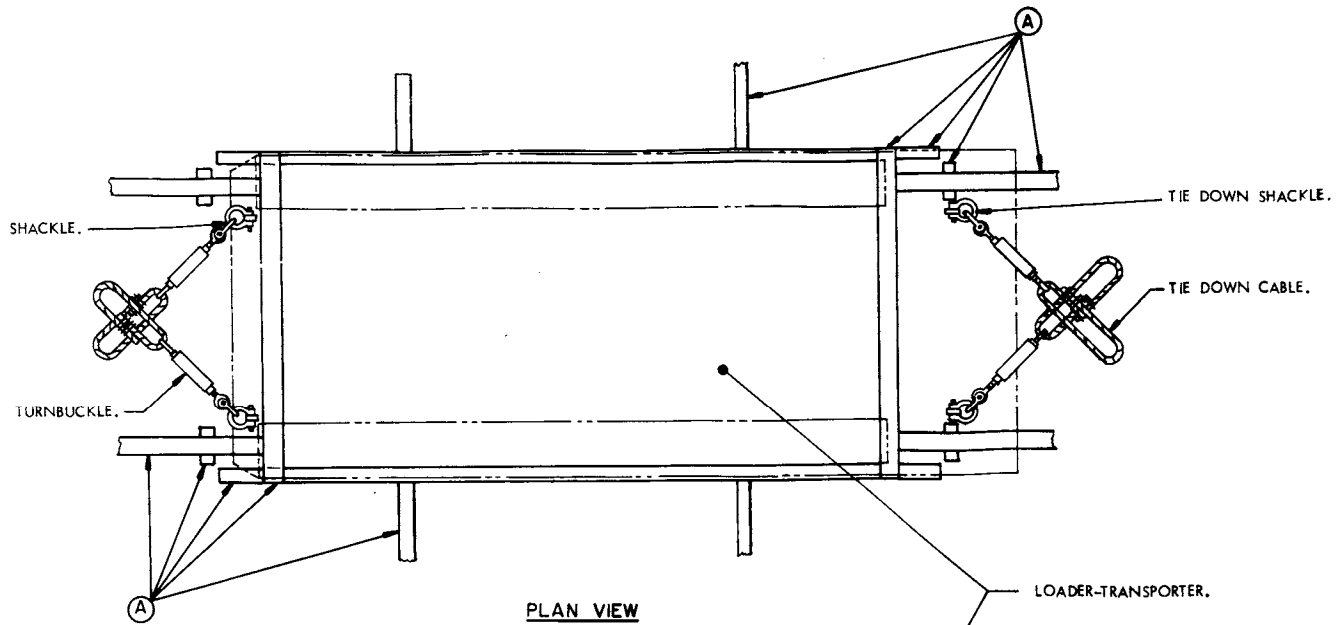
- A. PERTINENT PROVISIONS OF TITLE 45 CODE OF FEDERAL REGULATIONS APPLY.
- B. HANDLING OF THE LOADER-TRANSPORTER SHOULD BE ACCOMPLISHED BY USING THE LIFT POINTS DESIGNATED HEREIN.
- C. THE HANDLING SLING SHALL BE OF A DESIGN AND CONFIGURATION TO LIFT THE ITEM IN SUCH A MANNER THAT THE CABLE LEGS DO NOT COME IN CONTACT WITH OR APPLY PRESSURE AGAINST THE FRAMING, SUPERSTRUCTURE OR OTHER MEMBERS OF THE ITEM WHEN BEING LIFTED.
- D. EACH LEG OF THE HANDLING SLING MUST BE SECURELY ATTACHED TO A LIFT POINT PRIOR TO LIFTING.
- E. ALTHOUGH DESIRABLE, A LEVEL LIFT IS NOT MANDATORY. THE CENTER OF GRAVITY OF THIS ITEM IS SHOWN TO ASSIST IN DETERMINING CABLE LENGTHS TO ASSURE A SAFE LIFT.
- F. WHEN PICKING UP THE LOADER-TRANSPORTER, THE PROTECTIVE COVERING WILL BE PARTIALLY UNTIED AND ROLLED BACK TO EXPOSE THE LIFTING LOOPS TO PERMIT ATTACHMENT OF THE SLING HOOK AS SHOWN ON PAGE 3. WHEN THE ITEM HAS BEEN PLACED ABOARD SHIP, THE PROTECTIVE COVERING WILL BE REPLACED AND RE-SECURED AS SHOWN ON PAGE 4.

STOWAGE AND BRACING:

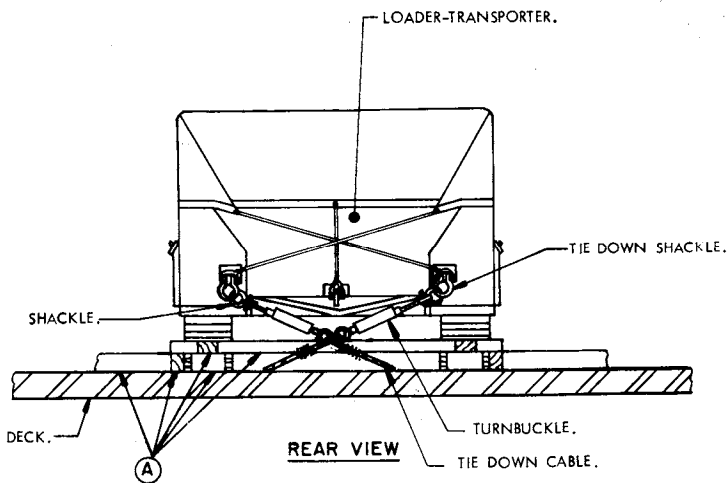
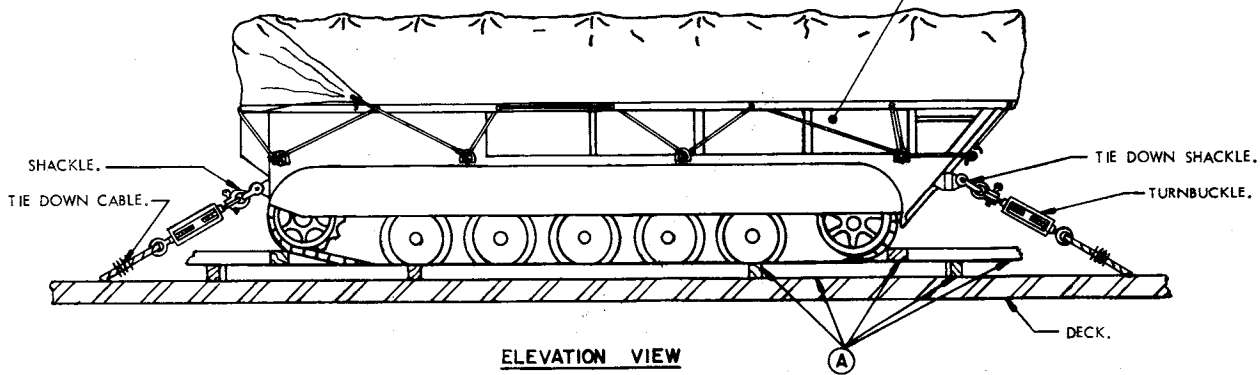
- A. WHEN STOWING THE LOADER-TRANSPORTER WITHIN THE HOLD OR TWEEN DECK, BRACING BETWEEN LOADER-TRANSPORTERS OR BETWEEN A LOADER-TRANSPORTER AND OTHER CARGO SHALL ONLY BE APPLIED AGAINST THE TRACK WHEELS AND/OR TRACKS OF THE VEHICLE. ALSO, OTHER CARGO ITEMS MUST NOT BE STACKED ON TOP OF OR BE BRACED AGAINST ANY OTHER PART OF THE LOADER-TRANSPORTER THAN AS IDENTIFIED IMMEDIATELY ABOVE.
- B. SPECIES, GRADE AND SIZE OF LUMBER TO BE USED WILL COMPLY WITH REQUIREMENTS OF CURRENT SHIPWRIGHT-CARPENTRY AND RELATED SERVICES CONTRACTS. BRACING METHODS AND LUMBER SIZES DEPICTED IN THIS DRAWING ARE CONSIDERED MINIMUM AND ARE NOT INTENDED TO CONFLICT WITH CONTRACT REQUIREMENTS.
- C. THE LOADER-TRANSPORTER IS EQUIPPED WITH TIE DOWN DEVICES AS SHOWN HEREIN WHICH ARE SYMMETRICAL ABOUT THE LONGITUDINAL LINE OF CENTER. THE LOADER-TRANSPORTER SHOULD BE SECURED FORE AND AFT TO SHIP TIE DOWN POINTS USING A MINIMUM OF TWO SYMMETRICALLY LOCATED TIE DOWN DEVICES IN EACH DIRECTION AS TYPICALLY SHOWN WITHIN THIS DOCUMENT.
- D. A TYPICAL TIE DOWN PROCEDURE IS SHOWN AND DEPICTS THE PREFERRED METHOD OF USING CABLES AND TURNBUCKLES. IF USED, A TURNBUCKLE MUST BE OF A SIZE EQUAL IN STRENGTH TO THE MINIMUM SIZE CABLE REQUIRED TO SECURE THE ITEM. IN LIEU OF CABLES AND TURNBUCKLES, SECUREMENT MAY BE ACCOMPLISHED BY OTHER ACCEPTED METHODS.



PRECAUTIONARY PROVISIONS FOR
HANDLING, STOWAGE AND BRACING
AS SPECIFIED IN THE NOTES ON
PAGE 2 MUST BE OBSERVED.



PHANTOM LINES INDICATE
VEHICLE AND TRACKS.



MINIMUM LUMBER SIZES	
(A)	4" X 6"

PRECAUTIONARY PROVISIONS FOR HANDLING,
STOWAGE AND BRACING AS SPECIFIED IN THE
NOTES ON PAGE 2 MUST BE OBSERVED