

APPROVED BY
MTMTS

Frank L. Paus
TEA, MTMTS

DATE *8 May 1972*

LANCE

MINIMUM REQUIREMENTS FOR THE HANDLING, STOWAGE, AND BRACING ABOARD SHIPS OF LAUNCHER, GUIDED MISSILE, CARRIER MOUNTED, XM752

REVISIONS				DRAPSMAN	PROJ ENG	AMCPM - LCSM
				<i>AMH</i>	<i>WAW/News</i>	<i>CDM</i>
				CHECKER	LOG ENGINE OFFICE	AMSMI - AP
				<i>W.B. / B.C.</i>	<i>John Lynch</i>	<i>MS</i>
				APPROVED		
				<i>Morris E. Johnson</i>		
				U.S. ARMY MISSILE COMMAND		
				APPROVED BY CHIEF OF COMMANDING GENERAL		
				U. S. ARMY MATERIEL COMMAND		
				<i>Paul L. Barrett</i>		
				U.S. ARMY MATERIEL COMMAND		
				MAY 1972		
				CLASS	DIVISION	DRAWING
				19	48	7231
						FILE
						GSE 18LC1

DO NOT SCALE

NOTES

GENERAL:

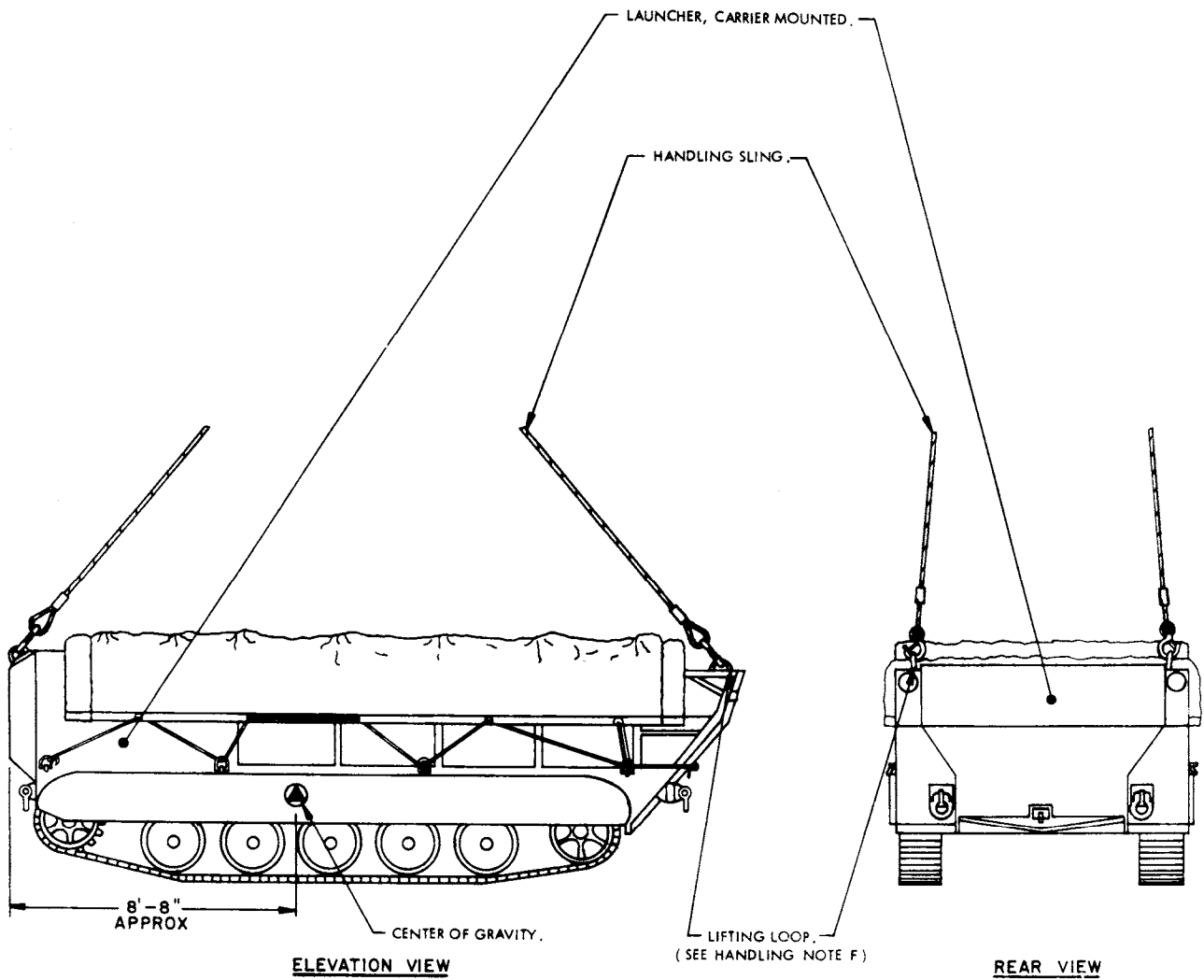
- A. THIS DOCUMENT HAS BEEN PREPARED AND ISSUED IN ACCORDANCE WITH AMCR 740-13.
- B. THIS DRAWING DEPICTS MINIMUM PROCEDURES APPLICABLE TO THE HANDLING, STOWAGE, AND BRACING ABOARD SHIPS OF THE LAUNCHER, GUIDED MISSILE, CARRIER MOUNTED, XM752, FOR THE LANCE MISSILE SYSTEM.
- C. THE LAUNCHER SHOWN HEREIN MAY BE STOWED IN THE SAME HOLD OR TWEEN DECK WITH OTHER TYPES OF CARGO. HOWEVER, IF THIS ITEM IS TO BE STOWED ADJACENT TO DANGEROUS ARTICLES, PERTINENT REQUIREMENTS OF COAST GUARD REGULATION NO. CG 108 MUST BE APPLIED.
- D. LADING DATA:
 - DIMENSIONS --- 21'-6" LONG X 8'-10" WIDE X 7'-6" HIGH.
 - GROSS WEIGHT - 15,893 LBS (APPROX).
 - CUBE ----- 1,424 CU. FT.

HANDLING:

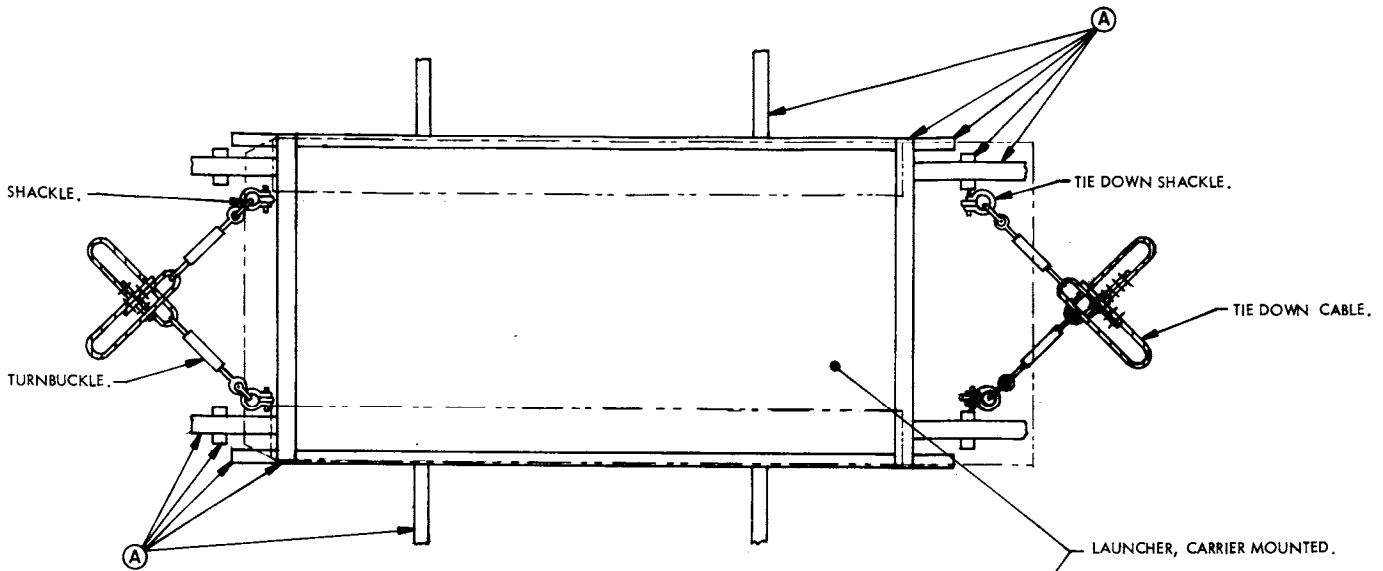
- A. PERTINENT PROVISIONS OF TITLE 46 CODE OF FEDERAL REGULATIONS APPLY.
- B. HANDLING OF THE LAUNCHER SHOULD BE ACCOMPLISHED BY USING THE LIFT POINTS DESIGNATED HEREIN.
- C. THE HANDLING SLING SHALL BE OF A DESIGN AND CONFIGURATION TO LIFT THE ITEM IN SUCH A MANNER THAT THE CABLE LEADS DO NOT COME IN CONTACT WITH OR APPLY PRESSURE AGAINST THE FRAMING, SUPERSTRUCTURE OR OTHER MEMBERS OF THE ITEM WHEN BEING LIFTED.
- D. EACH LEG OF THE HANDLING SLING MUST BE SECURELY ATTACHED TO A LIFT POINT PRIOR TO LIFTING.
- E. ALTHOUGH DESIRABLE, A LEVEL LIFT IS NOT MANDATORY. THE CENTER OF GRAVITY OF THIS ITEM IS SHOWN TO ASSIST IN DETERMINING CABLE LENGTHS TO ASSURE A SAFE LIFT.
- F. WHEN PICKING UP THE LOADER-TRANSPORTER, THE PROTECTIVE COVERING WILL BE PARTIALLY UNTIED AND ROLLED BACK TO EXPOSE THE LIFTING LOOPS TO PERMIT ATTACHMENT OF THE SLING HOOK AS SHOWN ON PAGE 3. WHEN THE ITEM HAS BEEN PLACED ABOARD SHIP, THE PROTECTIVE COVERING WILL BE REPLACED AND RE-SECURED AS SHOWN ON PAGE 4.

STOWAGE AND BRACING:

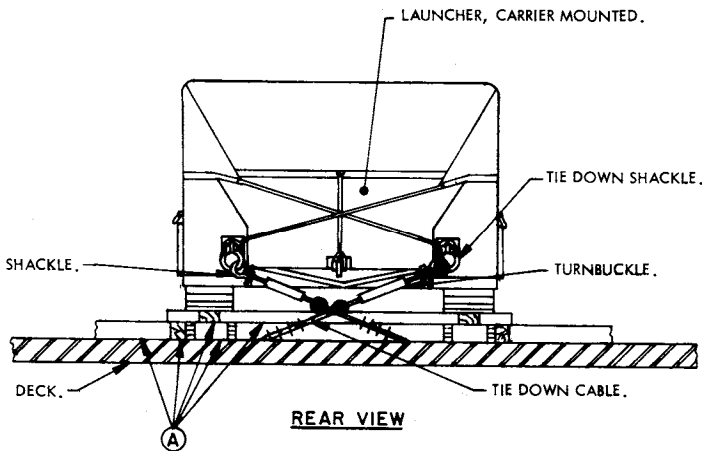
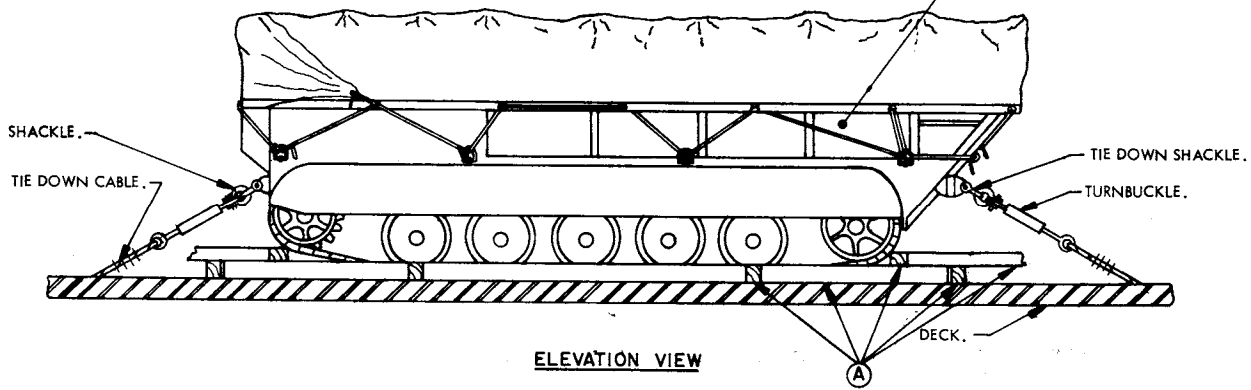
- A. WHEN STOWING THE LAUNCHER WITHIN THE HOLD OR TWEEN DECK, BRACING BETWEEN LAUNCHERS OR BETWEEN A LAUNCHER AND OTHER CARGO SHALL ONLY BE APPLIED AGAINST THE TRACK WHEELS AND/OR TRACKS OF THE VEHICLE. ALSO, OTHER CARGO ITEMS MUST NOT BE STACKED ON TOP OF OR BE BRACED AGAINST ANY OTHER PART OF THE LAUNCHER THAN AS IDENTIFIED IMMEDIATELY ABOVE.
- B. SPECIES, GRADE AND SIZE OF LUMBER TO BE USED WILL COMPLY WITH REQUIREMENTS OF CURRENT-SHIPWRIGHT-CARPENTRY AND RELATED SERVICES CONTRACTS. BRACING METHODS AND LUMBER SIZES DEPICTED IN THIS DRAWING ARE CONSIDERED MINIMUM AND ARE NOT INTENDED TO CONFLICT WITH CONTRACT REQUIREMENTS.
- C. THE LAUNCHER IS EQUIPPED WITH TIE DOWN DEVICES AS SHOWN HEREIN WHICH ARE SYMMETRICAL ABOUT THE LONGITUDINAL LINE OF CENTER. THE LAUNCHER SHOULD BE SECURED FORE AND AFT TO SHIP TIE DOWN POINTS USING A MINIMUM OF TWO SYMMETRICALLY LOCATED TIE DOWN DEVICES IN EACH DIRECTION AS TYPICALLY SHOWN WITHIN THIS DOCUMENT.
- D. A TYPICAL TIE DOWN PROCEDURE IS SHOWN AND DEPICTS THE PREFERRED METHOD OF USING CABLES AND TURNBUCKLES. IF USED, A TURNBUCKLE MUST BE OF A SIZE EQUAL IN STRENGTH TO THE MINIMUM SIZE CABLE REQUIRED TO SECURE THE ITEM. IN LIEU OF CABLES AND TURNBUCKLES, SECUREMENT MAY BE ACCOMPLISHED BY OTHER ACCEPTED METHODS.



PRECAUTIONARY PROVISIONS FOR HANDLING, STOWAGE AND BRACING AS SPECIFIED IN THE NOTES ON PAGE 2 MUST BE OBSERVED.



PLAN VIEW
 PHANTOM LINES INDICATE
 VEHICLE AND TRACKS.



MINIMUM LUMBER SIZES	
(A)	4" X 6"

PRECAUTIONARY PROVISIONS FOR HANDLING,
 STORAGE AND BRACING AS SPECIFIED IN THE
 NOTES ON PAGE 2 MUST BE OBSERVED.