

APPROVED BY  
MTMTS

*Frank L. Paul*

TEA, MTMTS

DATE *22 Dec 1971*

# HAWK

## MINIMUM REQUIREMENTS FOR THE HANDLING, STOWAGE AND BRACING ABOARD SHIPS OF CW ACQUISITION RADAR SET, AN/MPQ-34 AND/OR AN/MPQ-48, TRAILER MOUNTED

REVISIONS			DRAFTSMAN <i>SLG/SLG</i>	PROJ ENG <i>JHW/SLG</i>
			CHECKER <i>SLG/SLG</i>	DATE OFFICE <i>22/12/71</i>
			APPROVED <i>Morris E Johnson</i> U. S. ARMY MISSILE COMMAND	
			APPROVED BY ORDER OF COMMANDING GENERAL U. S. ARMY MATERIEL COMMAND <i>D. J. Ehinger</i> USAMC AMMO CENTER	
			U. S. ARMY MATERIEL COMMAND	
			JANUARY 1972	
			CLASS	DIVISION
			19	48
			DRAWING	FILE
			7221	GSE 18HA2

DO NOT SCALE

## NOTES

### GENERAL:

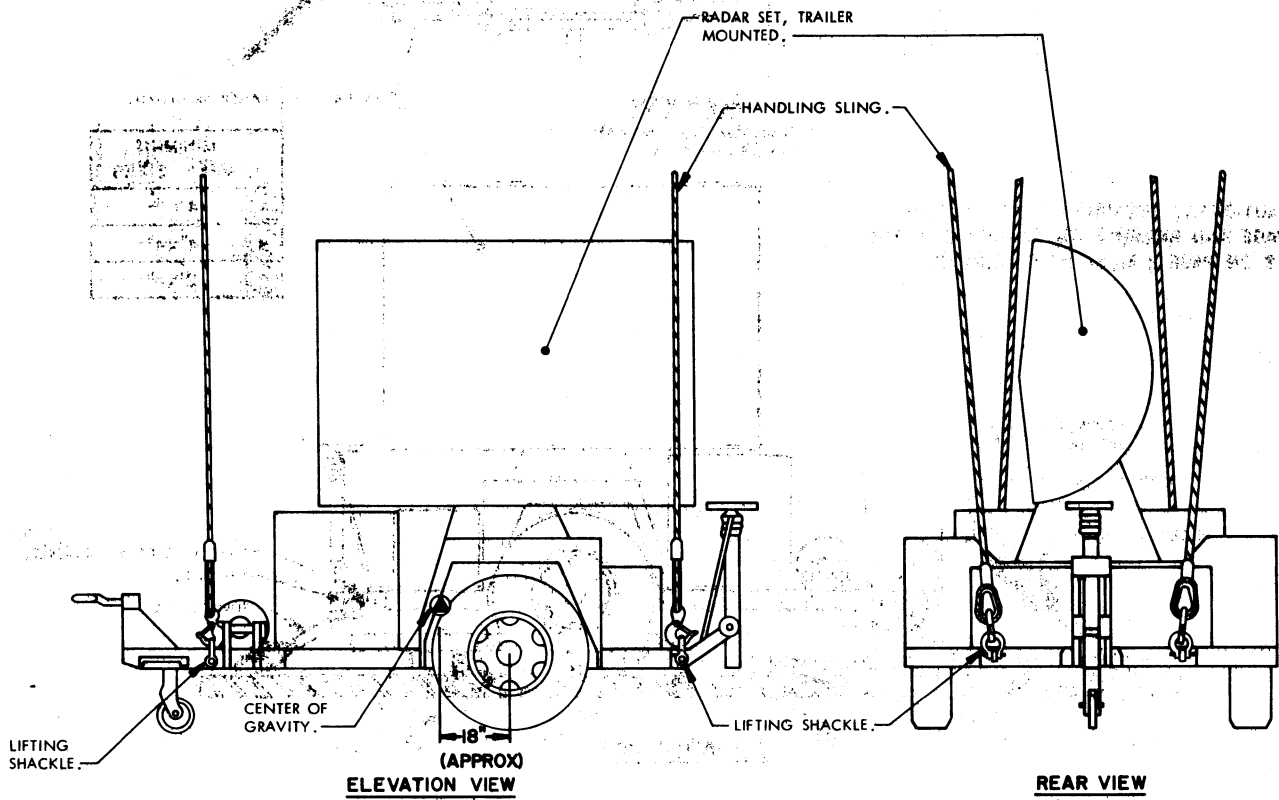
- A. THIS DOCUMENT HAS BEEN PREPARED AND ISSUED IN ACCORDANCE WITH AMCR 740-13.
- B. THIS DRAWING DEPICTS MINIMUM PROCEDURES APPLICABLE TO THE HANDLING, STOWAGE, AND BRACING ABOARD SHIPS OF CW ACQUISITION RADAR SET, AN/MPQ-34, AND/OR AN/MPQ-48, TRAILER MOUNTED, FOR THE HAWK MISSILE SYSTEM.
- C. THE RADAR SET SHOWN HEREIN MAY BE STOWED IN THE SAME HOLD OR TWEEN DECK WITH OTHER TYPES OF CARGO.
- D. LADING DATA:
  - DIMENSIONS ----- 14'-3" LONG X 7'-10" WIDE X 10'-4" HIGH.
  - GROSS WEIGHT --- 4,650 LBS ( APPROX ).
  - CUBE ----- 1,153 CU. FT.

### HANDLING:

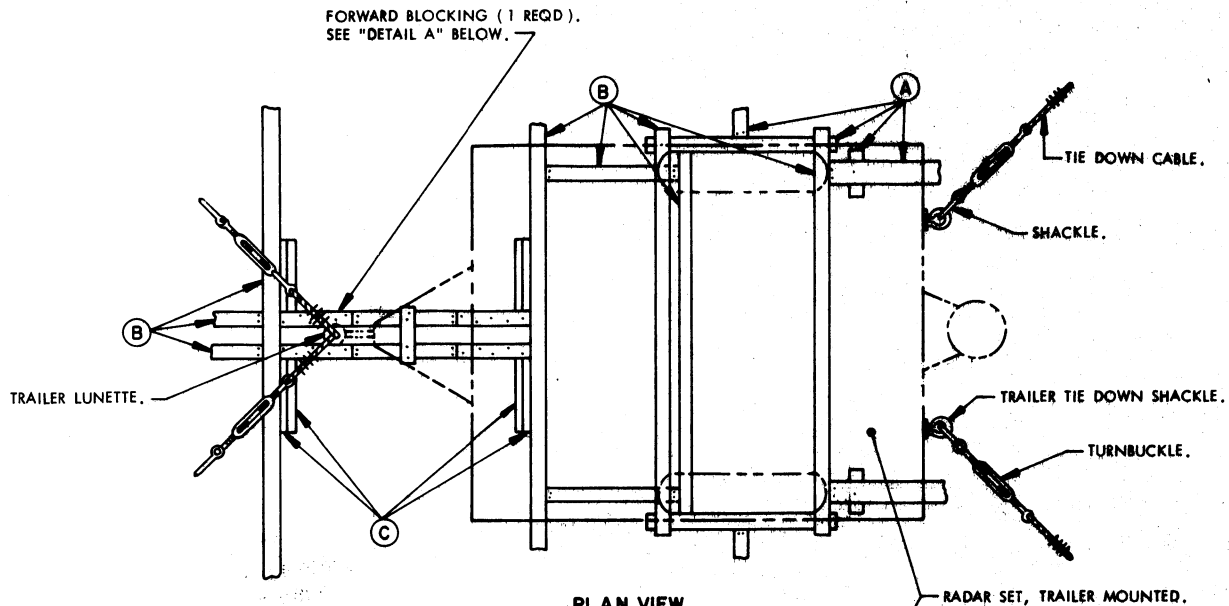
- A. PERTINENT PROVISIONS OF TITLE 46 CODE OF FEDERAL REGULATIONS APPLY.
- B. HANDLING OF THE RADAR SET SHOULD BE ACCOMPLISHED BY USING THE LIFT POINTS DESIGNATED HEREIN.
- C. THE HANDLING SLING SHALL BE OF A DESIGN AND CONFIGURATION TO LIFT THE ITEM IN SUCH A MANNER THAT THE CABLE LEGS DO NOT COME IN CONTACT WITH OR APPLY PRESSURE AGAINST THE FRAMING, SUPERSTRUCTURE OR OTHER MEMBERS OF THE ITEM WHEN BEING LIFTED.
- D. EACH LEG OF THE HANDLING SLING MUST BE SECURELY ATTACHED TO A LIFT POINT PRIOR TO LIFTING.
- E. ALTHOUGH DESIRABLE, A LEVEL LIFT IS NOT MANDATORY. THE CENTER OF GRAVITY OF THIS ITEM IS SHOWN TO ASSIST IN DETERMINING CABLE LENGTHS TO ASSURE A SAFE LIFT.

### STOWAGE AND BRACING:

- A. WHEN STOWING THE RADAR SET WITHIN THE HOLD OR TWEEN DECK, BRACING BETWEEN TRAILERS OR BETWEEN RADAR SET AND OTHER CARGO SHALL ONLY BE APPLIED AGAINST THE WHEELS OF THE TRAILER. ALSO, OTHER CARGO ITEMS MUST NOT BE STACKED ON TOP OF OR BE BRACED AGAINST ANY OTHER PART OF THE RADAR SET THAN AS IDENTIFIED IMMEDIATELY ABOVE.
- B. SPECIES, GRADE AND SIZE OF LUMBER TO BE USED WILL COMPLY WITH REQUIREMENTS OF CURRENT SHIPWRIGHT-CARPENTRY AND RELATED SERVICES CONTRACTS. BRACING METHODS AND LUMBER SIZES DEPICTED IN THIS DRAWING ARE CONSIDERED MINIMUM AND ARE NOT INTENDED TO CONFLICT WITH CONTRACT REQUIREMENTS.
- C. THE RADAR SET IS EQUIPPED WITH TIE DOWN DEVICES AS SHOWN HEREIN WHICH ARE SYMMETRICAL ABOUT THE LONGITUDINAL LINE OF CENTER. THE ITEM SHOULD BE SECURED FORE AND AFT TO SHIP TIE DOWN POINTS USING A MINIMUM OF TWO SYMMETRICALLY LOCATED TIE DOWN DEVICES IN EACH DIRECTION AS TYPICALLY SHOWN WITHIN THIS DOCUMENT.
- D. A TYPICAL TIE DOWN PROCEDURE IS SHOWN AND DEPICTS THE PREFERRED METHOD OF USING CABLES AND TURNBUCKLES. IF USED, A TURNBUCKLE MUST BE OF A SIZE EQUAL IN STRENGTH TO THE MINIMUM SIZE CABLE REQUIRED TO SECURE THE ITEM. IN LIEU OF CABLES AND TURNBUCKLES, SECUREMENT MAY BE ACCOMPLISHED BY OTHER ACCEPTED METHODS.



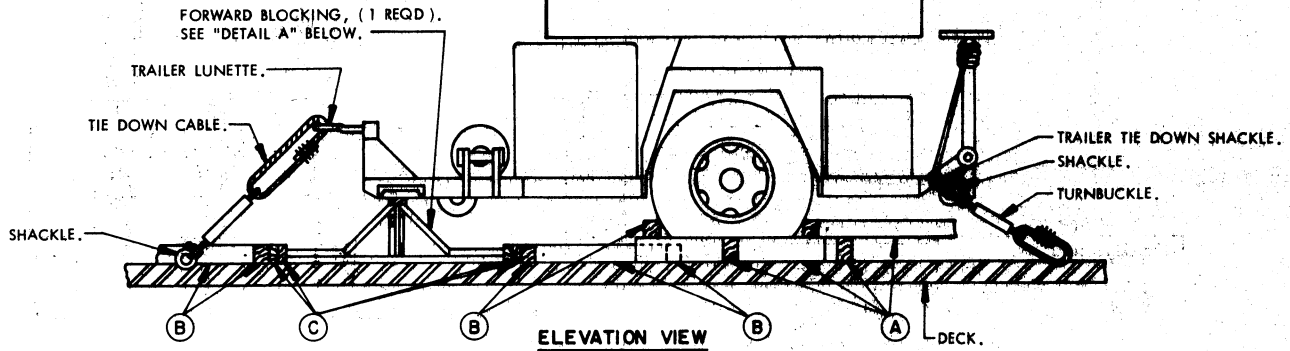
PRECAUTIONARY PROVISIONS FOR HANDLING, STOWAGE AND BRACING AS SPECIFIED IN THE NOTES ON PAGE 2 MUST BE OBSERVED.



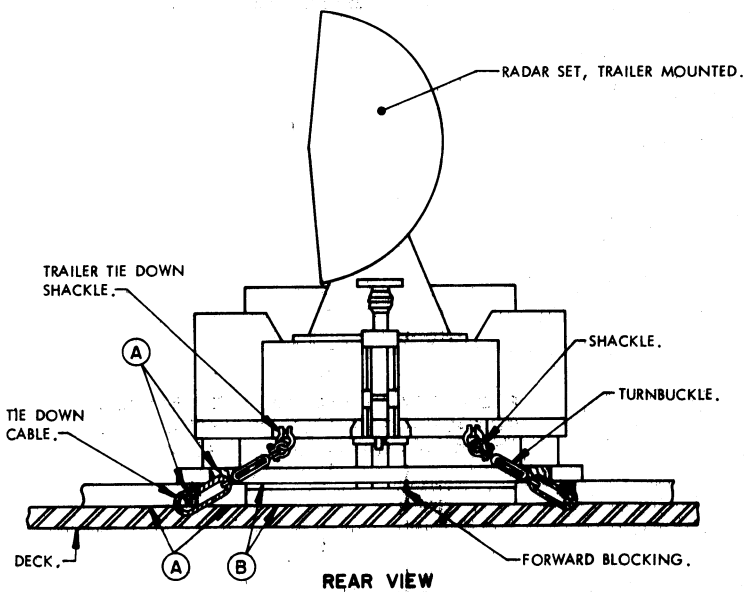
**PLAN VIEW**  
PHANTOM LINES INDICATE TRAILER AND TIRES.

MINIMUM LUMBER SIZES	
(A)	4"X6"
(B)	4"X4"
(C)	2"X4"

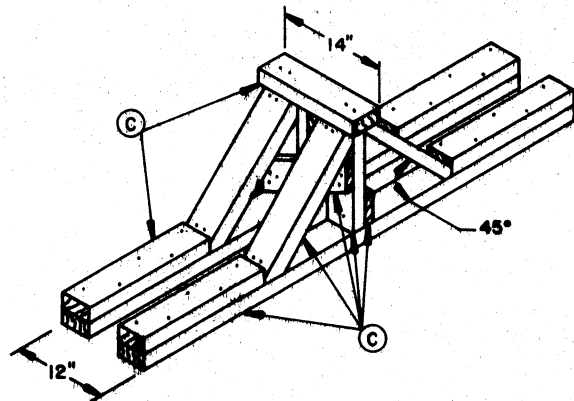
**PRECAUTIONARY PROVISIONS FOR HANDLING, STORAGE AND BRACING AS SPECIFIED IN THE NOTES ON PAGE 2 MUST BE OBSERVED.**



**ELEVATION VIEW**



**REAR VIEW**



**DETAIL A**  
THE OVERALL DIMENSIONS OF THE ABOVE ASSEMBLY ARE 63" LONG X 14" WIDE X 16-1/4" HIGH.