

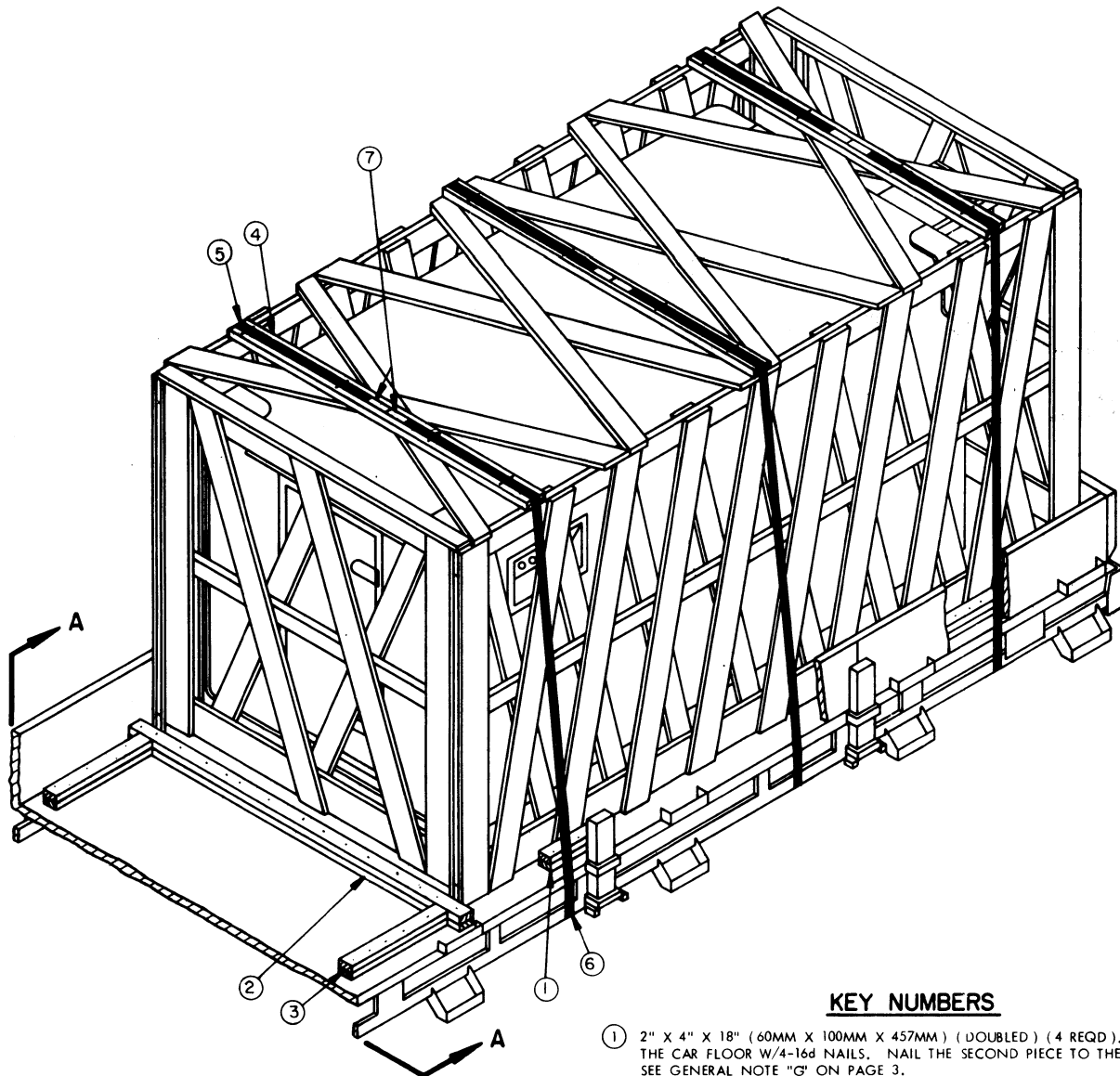
APPROVED BY  
 MOVEMENT CONTROL AGENCY  
 US ARMY TRANSPORTATION COMMAND,  
 EUROPE  
 SIGNED [Signature]  
 COL T C CMDG  
 DATE 16 Aug 69

# LCSS

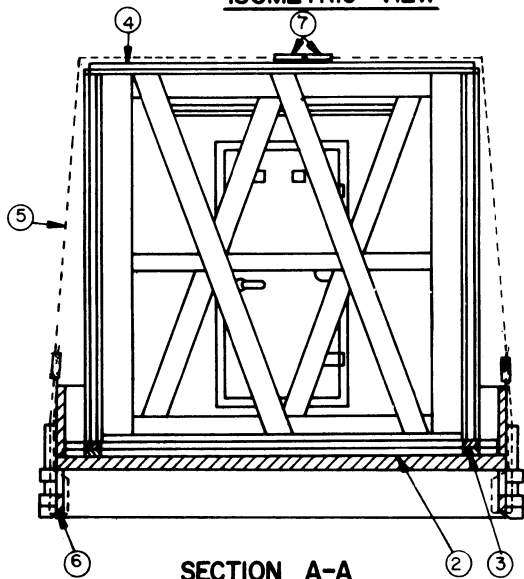
## LOADING & BRACING ON GERMAN RAILCAR OF SHOP EQUIPMENT (CRATED)

|                                    |                                      |                                      |   |
|------------------------------------|--------------------------------------|--------------------------------------|---|
| DRAFTER/NAME<br><b>JEE</b>         | PROJ. ENG.<br><b>C. F. New</b>       | ARC. FN. - LTR<br><b>[Signature]</b> | SUBMITTED<br><b>W. Harding, Col.</b>                                    |
| CHECKER/NAME<br><b>[Signature]</b> | ARC. AREA, CTR<br><b>[Signature]</b> | ARC. L. NUMBER<br><b>[Signature]</b> | COMMANDEER OFFICER, SAVANNAH ARMY DEPOT                                 |
| <b>REVISIONS</b>                   |                                      |                                      | APPROVED<br><b>[Signature]</b>  |
|                                    |                                      |                                      | ARMY MISSILE COMMAND  |
|                                    |                                      |                                      | APPROVED BY ORDER OF COMMANDEER GENERAL,<br>U. S. ARMY MATERIAL COMMAND |
|                                    |                                      |                                      | <b>[Signature]</b>  |
|                                    |                                      |                                      | U. S. ARMY MATERIEL COMMAND   |
|                                    |                                      |                                      | NOVEMBER 1969   |
|                                    |                                      |                                      | CLASS    DIVISION    DRAWING    FILE                                    |
|                                    |                                      |                                      | <b>19      48      7197      GSE<br/>5LS3</b>                           |

**DO NOT SCALE**



**ISOMETRIC VIEW**



**SECTION A-A**

**KEY NUMBERS**

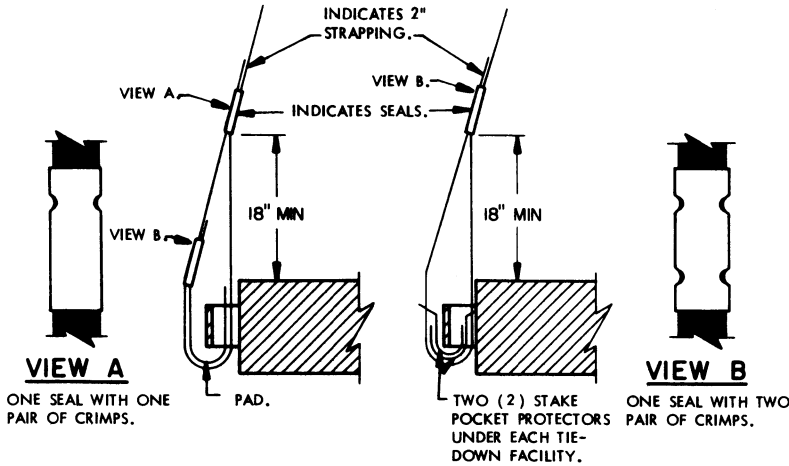
- ① 2" X 4" X 18" (60MM X 100MM X 457MM) (DOUBLED) (4 REQD). NAIL THE FIRST PIECE TO THE CAR FLOOR W/4-16d NAILS. NAIL THE SECOND PIECE TO THE FIRST IN A LIKE MANNER. SEE GENERAL NOTE "G" ON PAGE 3.
- ② 2" X 4" (60MM X 100MM) BY CAR WIDTH (DOUBLED) (1 REQD). NAIL THE FIRST PIECE TO THE CAR FLOOR W/1-16d NAIL EVERY 8". NAIL THE SECOND PIECE TO THE FIRST W/1-40d NAIL EVERY 8".
- ③ 2" X 4" X 30" (60MM X 100MM X 762MM) (DOUBLED) (2 REQD). NAIL THE FIRST PIECE TO THE CAR FLOOR W/5-16d NAILS. NAIL THE SECOND PIECE TO THE FIRST W/5-40d NAILS.
- ④ STRAPPING BOARD, 2" X 6" X 8'-0" (60MM X 120MM X 2438MM) (3 REQD).
- ⑤ STEEL STRAPPING, 2" X .050" X 38'-0" (3 REQD). INSTALL EACH STRAP FROM TWO (2) 19'-0" LONG PIECES. STAPLE TO PIECE MARKED ④ W/2" STAPLES. SEE "NOTE ●" BELOW.
- ⑥ PAD, 2" X .050" X 24" LONG STEEL STRAPPING (6 REQD). POSITION UNDER AND SEAL TO PIECE MARKED ⑤. SEE "DETAIL A". ALT: STAKE POCKET PROTECTORS (12 REQD). USE TWO (2) UNDER EACH TIEDOWN FACILITY WITH PIECE MARKED ⑤. SEE "DETAIL B".
- ⑦ SEAL FOR 2" STRAPPING (18 REQD, 6 PER STRAP).

**NOTE ●**

IF STEEL STRAPPING IS NOT AVAILABLE, FOUR (4) STRANDS OF NO. 8 GAGE BLACK ANNEALED WIRE CAN BE SUBSTITUTED FOR EACH PIECE MARKED ⑤. TWIST TAUT WITH A 2" X 2" BY LENGTH TO SUIT PIECE.

## GENERAL NOTES

- A. THIS DOCUMENT HAS BEEN PREPARED AND ISSUED IN ACCORDANCE WITH AMCR 740-13.
- B. THE OUTLOADING PROCEDURES SHOWN HEREIN ARE APPLICABLE TO GERMAN RAIL CARS AND FOREIGN RAIL CARS OF SIMILAR DESIGN AND CONSTRUCTION.
- C. THE LOAD AS SHOWN IS BASED ON A GERMAN RAILCAR (RLMMS) 40'-11" (12471MM) LONG BY 9'-1-1/2" (2781MM) WIDE WITH 18" (457MM) HIGH CAR SIDES. ADDITIONAL UNITS OR OTHER ITEMS MAY BE LOADED ON THE CAR, WITH THE VIEW TOWARD FULL UTILIZATION OF CARRIER EQUIPMENT.
- D. LADING DATA:  
 DIMENSIONS ----- 16'-2" (4924MM) LONG X 8'-1" (2464MM) WIDE X 8'-5-1/2" (2576MM) HIGH.  
 GROSS WEIGHT --- 7,820 POUNDS (APPROX) (3547 KG).
- E. REMOVE ALL POSTS FROM THE SIDES OF THE CAR AND PLACE IN RACKS UNDER THE CAR.
- F. WHEN ANY STRAP IS SEALED AT AN END-OVER-END LAP JOINT, A MINIMUM OF TWO (2) SEALS, BUTTED TOGETHER, WITH TWO (2) PAIR OF CRIMPS PER SEAL MUST BE USED TO SEAL THE JOINT.
- G. NOTICE. A STAGGERED NAILING PATTERN WILL BE USED WHEN DUNNAGE IS NAILED TO THE FLOOR OF THE TRANSPORTING VEHICLE, OR WHEN LAMINATING DUNNAGE. ADDITIONALLY, THE NAILING PATTERN FOR AN UPPER PIECE OF LAMINATED DUNNAGE WILL BE ADJUSTED AS REQUIRED SO THAT A NAIL FOR THAT PIECE WILL NOT BE DRIVEN THROUGH ONTO OR RIGHT BESIDE A NAIL IN A LOWER PIECE.



### DETAIL A

METHOD OF INSTALLING 2" STRAPPING AND PAD AT TIEDOWN FACILITY.

### DETAIL B

METHOD OF INSTALLING 2" STRAPPING AND STAKE POCKET PROTECTORS (ALT PAD).

### BILL OF MATERIAL

| LUMBER                            | LINEAR FEET | BOARD FEET            |
|-----------------------------------|-------------|-----------------------|
| 2" X 4"                           | 41          | 28                    |
| 2" X 6"                           | 24          | 24                    |
| NAILS                             | NO. REQD    | POUNDS                |
| 16d                               | 56          | 1-1/4                 |
| 40d                               | 24          | 1-1/2                 |
| STEEL STRAPPING, 2" X .050" ----- |             | 130' REQD ---- 43 LBS |
| SEALS, 2" -----                   |             | 18 REQD ---- 6 LBS    |
| STAPLES, 2" -----                 |             | 12 REQD ---- NIL      |

### LIST OF RAILCARS THAT MAY BE USED FOR SHIPMENTS

| RAILCARS   | NO. OF ITEMS | TOTAL WEIGHT OF ITEMS |
|------------|--------------|-----------------------|
| RMS -31    | 2            | 15,640 LBS (7094 KG)  |
| RMMS -33   | 2            | 15,640 LBS (7094 KG)  |
| RLMMS -56  | 2            | 15,640 LBS (7094 KG)  |
| RBMMMS -55 | 2            | 15,640 LBS (7094 KG)  |
| SM -24     | 2            | 15,640 LBS (7094 KG)  |
| SSLMAS -53 | 3            | 23,460 LBS (10641 KG) |
| SSY -45    | 1            | 7,820 LBS (3547 KG)   |
| SSYM -46   | 2            | 15,640 LBS (7094 KG)  |
| XLM -57    | 1            | 7,820 LBS (3547 KG)   |

### MATERIAL SPECIFICATIONS

LUMBER ----- : DOUGLAS FIR OR COMPARABLE LUMBER WITH STRAIGHT GRAIN AND FREE OF MATERIAL DEFECTS. REF: FED SPEC MM-L-751.

NAILS ----- : COMMON, CEMENT COATED OR CHEMICALLY ETCHED. REF: FED SPEC FF-N-105. ALT: ANNULAR-RING TYPE NAIL OF SAME SIZE.

STRAPPING, STEEL: TYPE I OR IV, CLASS A OR B OR C, REF: FED SPEC QQ-S-781.

### LOAD AS SHOWN

| ITEM                    | QUANTITY | WEIGHT (APPROX) |
|-------------------------|----------|-----------------|
| SHOP EQUIPMENT (CRATED) | 1        | 7,820 LBS       |
| DUNNAGE                 |          | 182 LBS         |
| TOTAL WEIGHT            |          | 8,002 LBS       |

