

APPROVED BY
 MECH DIV AAR, THEIR LETTER
 DATED 5 Aug 70 FILE LG-11.0
 SIGNED Frank L. Ruse
 DATE 14 August 1970
 TEA, MTMTS, FT EUSTIS, VA.

NIKE-HERCULES

LOADING AND BRACING ON FLAT CAR OF THE COMPONENT PARTS FOR THE FIXED HIPAR RADAR

INDEX

<u>ITEM</u>	<u>PAGE(S)</u>
GENERAL NOTES, AND MATERIAL SPECIFICATIONS-----	2
DETAILS-----	3
HIPAR RADAR SET ON A 41'-6" LONG BY 9'-4" WIDE CAR---	4,5
HIPAR RADAR SET ON A 50'-0" LONG BY 9'-2" WIDE CAR---	6,7

DRAFTSMAN <i>TRS/CBE</i>	PROJ ENG <i>C.F./New</i>	AMCPM-HE-S	SUBMITTED <i>C. H. Fish, Col. and C.</i>
CHECKER <i>SEE/DBX</i>	ANG ANNO CTR <i>John Byrd</i>	AMSMI-SMMP <i>W.E.H./MEG</i>	COMMANDING OFFICER, SAVANNA ARMY DEPOT
REVISIONS			APPROVED <i>Andrew W. Heid</i>
			ARMY MISSILE COMMAND
			APPROVED BY ORDER OF COMMANDING GENERAL, U. S. ARMY MATERIEL COMMAND
			<i>B. D. Heil</i>
			U. S. ARMY MATERIEL COMMAND
			NOVEMBER 1970
			CLASS DIVISION DRAWING FILE
			19 48 7196 GSE 5NH29

DO NOT SCALE

GENERAL NOTES

- A. THIS DOCUMENT HAS BEEN PREPARED AND ISSUED IN ACCORDANCE WITH AMCR 740-13.
- B. LOADS AS SHOWN HEREIN ARE BASED ON FLAT CARS OF VARIOUS LENGTHS AND WIDTHS WITH STAKE POCKETS SPACED 42" ON CENTER. SEE THE "SPECIAL NOTES" SECTION ADJACENT TO AN OUTLOADING METHOD FOR OUTLOADING GUIDANCE. SEE GENERAL NOTE "L".
- C. LADING DATA (CRATED):

ITEM	WT LBS (APPROX)	DIMENSIONS
1. AMPLIFIER, RADIO FREQUENCY	4,790	7'-0" LONG X 5'-5" WIDE X 7'-5" HIGH.
2. AMPLIFIER, RADIO FREQUENCY	8,560	7'-0" LONG X 5'-5" WIDE X 7'-5" HIGH.
3. CONTROL INDICATOR	3,240	6'-2-1/2" LONG X 4'-6" WIDE X 7'-1" HIGH.
4. COOLER, ELECTRONIC	4,045	7'-7" LONG X 4'-2" WIDE X 6'-2" HIGH.
5. GENERATOR, PULSE	3,330	4'-10" LONG X 5'-1" WIDE X 7'-3" HIGH.
6. POWER SUPPLY	4,810	6'-0" LONG X 4'-9" WIDE X 7'-2" HIGH.
7. RECEIVER GROUP	2,540	6'-3" LONG X 3'-5" WIDE X 7'-2" HIGH.
8. REGULATOR, VOLTAGE	3,610	4'-5" LONG X 3'-6" WIDE X 5'-5" HIGH.

- D. REFER TO ASSOCIATION OF AMERICAN RAILROADS MANUAL, "GENERAL RULES GOVERNING THE LOADING OF COMMODITIES ON OPEN TOP CARS", FOR APPLICABLE LOADING RULES: PREFACE, 1(a), 2, 3, 4, 5, 9, 14, AND 15.
- E. ONLY CARS WITH "SOUND" FLOORS WILL BE USED. CARS WITH STEEL FLOOR ENDS AND/OR EXPOSED STEEL BOLSTERS WHICH INTERFERE WITH PROPER POSITIONING OR NAILING OF THE DUNNAGE WILL NOT BE USED. FOR SPECIAL PROVISIONS SEE "END BLOCKING FOR CARS WITH EXPOSED STEEL BOLSTERS" DETAIL ON PAGE 3.
- F. WHEN ANY STRAP IS SEALED AT AN END-OVER-END LAP JOINT, OR AS SHOWN IN "DETAIL A" AND "DETAIL B" ON PAGE 3, A MINIMUM OF TWO (2) SEALS, BUTTED TOGETHER, WITH TWO (2) PAIR OF CRIMPS PER SEAL MUST BE USED.
- G. **CAUTION:** STAKE POCKETS WILL BE USED FOR ALL TIE DOWN STRAPPING WHEREVER POSSIBLE. DO NOT USE SWIVEL RING TYPE ANCHOR DEVICES. IF OTHER TYPES ARE USED, THEY MUST BE OF SUFFICIENT WIDTH TO RECEIVE 2" STRAP.
- H. DUNNAGE LUMBER SPECIFIED THROUGHOUT THIS PROCEDURAL DRAWING IS OF NOMINAL SIZE. FOR EXAMPLE, 2" X 6" MATERIAL IS ACTUALLY 1-5/8" THICK BY 5-5/8" WIDE.
- J. **NOTICE:** A STAGGERED NAILING PATTERN WILL BE USED WHEN DUNNAGE IS NAILED TO THE FLOOR OF THE TRANSPORTING VEHICLE, OR WHEN LAMINATING DUNNAGE. ADDITIONALLY, THE NAILING PATTERN FOR AN UPPER PIECE OF LAMINATED DUNNAGE WILL BE ADJUSTED AS REQUIRED SO THAT A NAIL FOR THAT PIECE WILL NOT BE DRIVEN THROUGH ONTO OR RIGHT BESIDE A NAIL IN A LOWER PIECE.
- K. IF EDGE PROTECTORS FOR 2" STEEL STRAPPING ARE NOT COMMERCIALY AVAILABLE, THEY MAY BE FORMED FROM 18 (MINIMUM) GAGE SHEET STEEL PIECES WHICH ARE 9" LONG BY 6" WIDE.
- L. BASED ON FLAT CARS WITH STAKE POCKETS SPACED 42" ON CENTER, THE CRATED ITEMS MUST BE POSITIONED ON THE CAR AS SHOWN TO PROVIDE FOR PROPER APPLICATION OF THE 2" HOLD-DOWN STRAPS; HOWEVER, IF CARS ARE AVAILABLE WITH STAKE POCKETS SPACED OTHER THAN 42" APART OR IF ADEQUATE TIE DOWN DEVICES ARE PROVIDED BETWEEN STAKE POCKETS, THE CRATED ITEMS SHOULD BE POSITIONED ON THE CAR TO MOST EFFICIENTLY UTILIZE TIE DOWN ATTACHMENT POINTS. **CAUTION:** EACH CRATED ITEM MUST BE SECURED WITH NOT LESS THAN TWO (2) HOLD-DOWN STRAPS. ADDITIONALLY, A HOLD-DOWN STRAP MUST NOT BE INSTALLED SO NEAR THE END OF AN ITEM THAT IT IS IN DANGER OF BEING DISLODGED DURING TRANSPORT.

MATERIAL SPECIFICATIONS

LUMBER -----: DOUGLAS FIR OR COMPARABLE LUMBER WITH STRAIGHT GRAIN AND FREE OF MATERIAL DEFECTS. REF: FED SPEC MM-L-751.

NAILS -----: COMMON, CEMENT COATED OR CHEMICALLY ETCHED.
REF: FED SPEC FF-N-105.
ALT: ANNULAR-RING TYPE NAIL OF SAME SIZE.

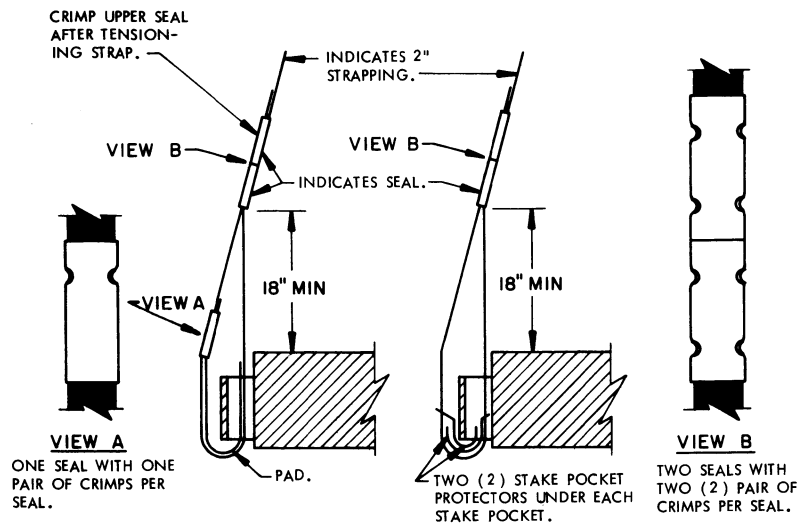
STRAPPING, STEEL -: TYPE I OR IV, CLASS A OR C. REF: FED SPEC QQ-S-781.

STRAP SEAL; STRAP

STAPLE; STAKE

POCKET PROTECTOR;

EDGE PROTECTOR -: COMMERCIAL GRADE.



DETAIL A
METHOD OF INSTALLING 2" STRAPPING AND PAD AT STAKE POCKET.

DETAIL B
METHOD OF INSTALLING 2" STRAPPING AND STAKE POCKET PROTECTORS (ALT PAD).

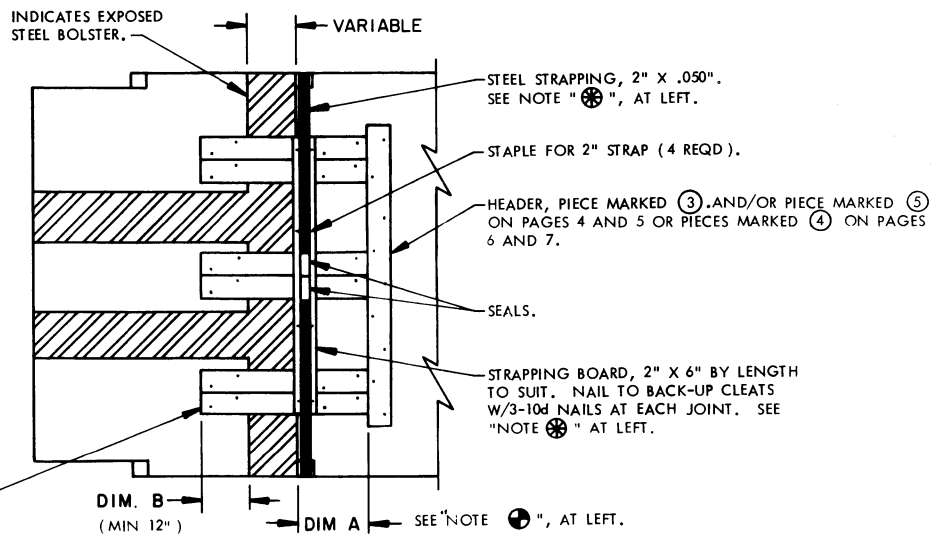
NOTE ☼:

THE OPTIONAL STRAP HOLD DOWN FOR END BLOCKING IS FOR CARS WITH OR WITHOUT EXPOSED STEEL BOLSTERS.

NOTE Ⓚ:

WHEN LOADING CARS WITH EXPOSED STEEL BOLSTERS, THE TOTAL OF DIMENSION "A" AND DIMENSION "B" (MIN 12") MUST EQUAL THE LENGTH OF THE BACK-UP CLEATS (PIECES MARKED Ⓣ AND/OR Ⓠ) TO PROVIDE FOR PROPER NAILING TO THE CAR FLOOR. SEE PIECE MARKED Ⓣ ON PAGES 4 AND 5 AND Ⓠ ON PAGES 6 AND 7.

BACK-UP, PIECE MARKED Ⓣ ON PAGES 4 AND 5, AND Ⓠ ON PAGES 6 AND 7. SEE "NOTE Ⓚ" ABOVE.

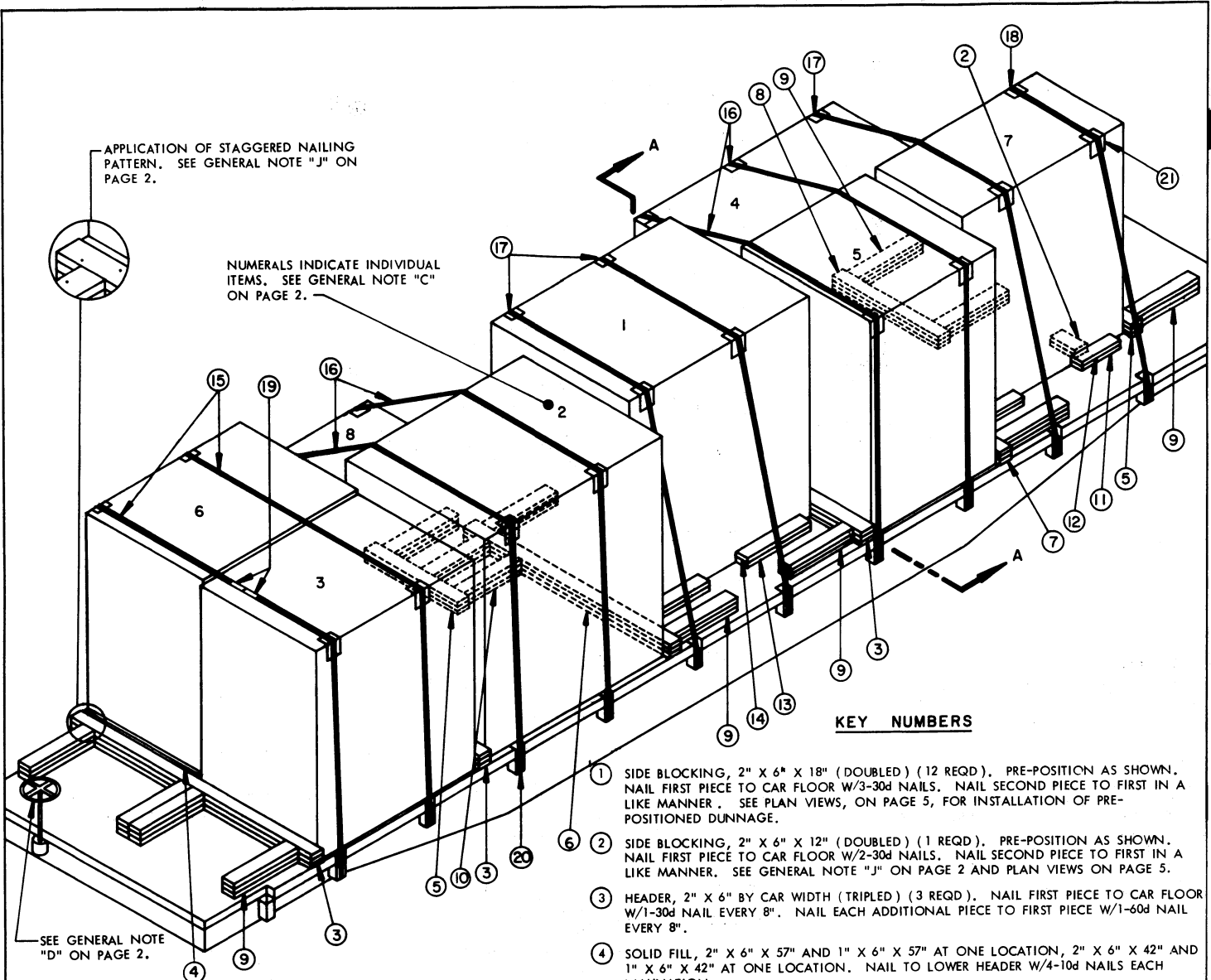


END BLOCKING FOR CARS WITH EXPOSED STEEL BOLSTERS

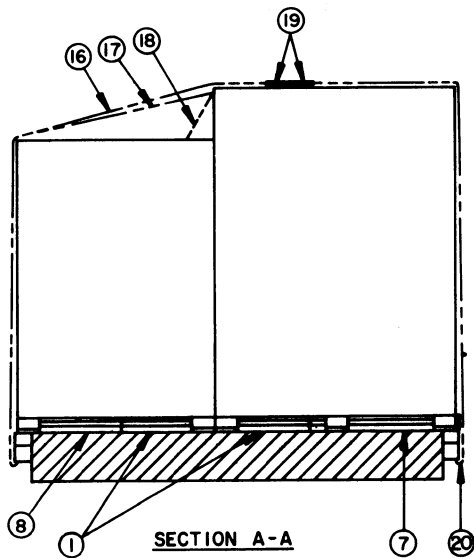
SEE GENERAL NOTE "E" ON PAGE 2.

APPLICATION OF STAGGERED NAILING PATTERN. SEE GENERAL NOTE "J" ON PAGE 2.

NUMERALS INDICATE INDIVIDUAL ITEMS. SEE GENERAL NOTE "C" ON PAGE 2.



ISOMETRIC VIEW

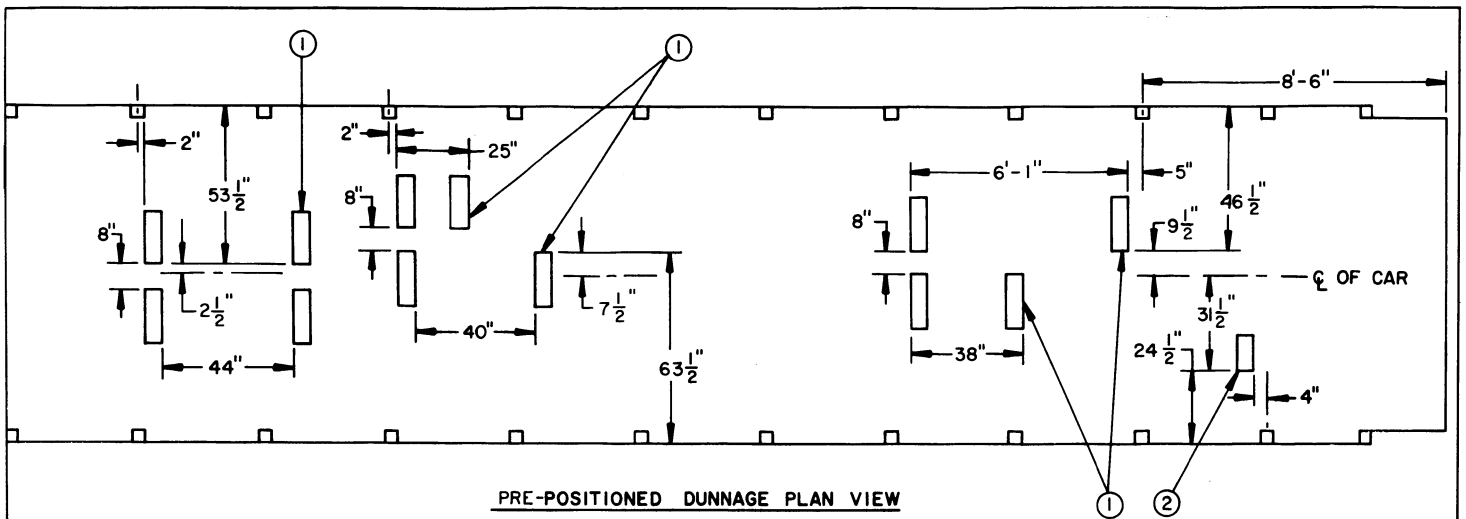


SECTION A-A

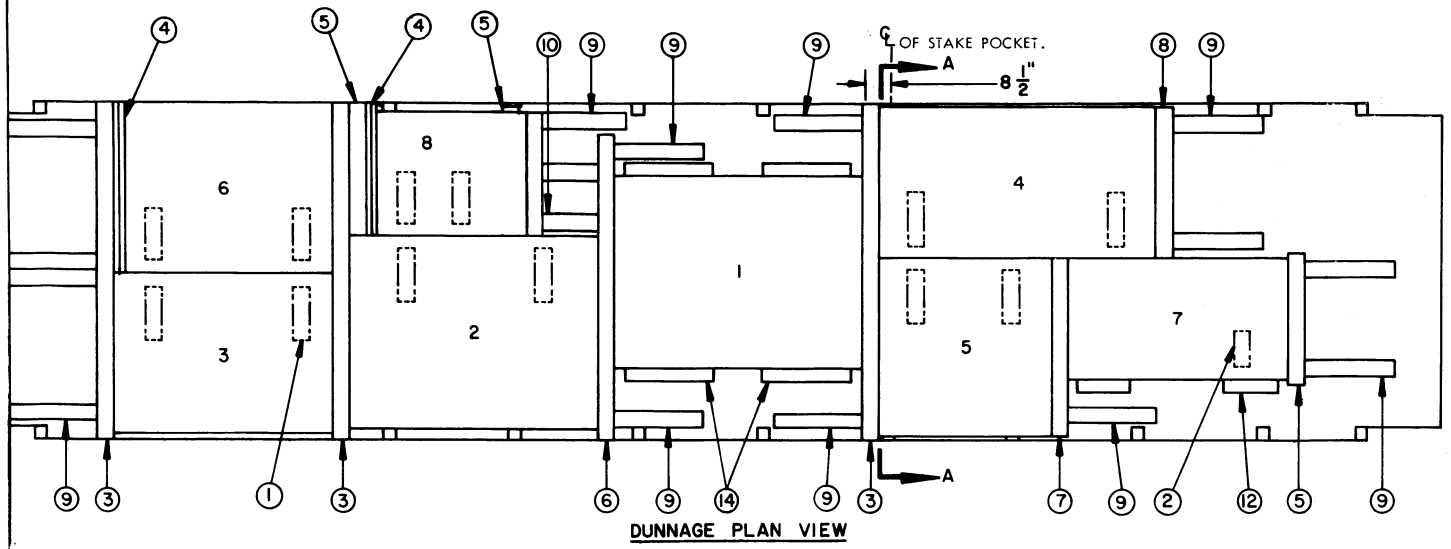
KEY NUMBERS

- ① SIDE BLOCKING, 2" X 6" X 18" (DOUBLED) (12 REQD). PRE-POSITION AS SHOWN. NAIL FIRST PIECE TO CAR FLOOR W/3-30d NAILS. NAIL SECOND PIECE TO FIRST IN A LIKE MANNER. SEE PLAN VIEWS, ON PAGE 5, FOR INSTALLATION OF PRE-POSITIONED DUNNAGE.
- ② SIDE BLOCKING, 2" X 6" X 12" (DOUBLED) (1 REQD). PRE-POSITION AS SHOWN. NAIL FIRST PIECE TO CAR FLOOR W/2-30d NAILS. NAIL SECOND PIECE TO FIRST IN A LIKE MANNER. SEE GENERAL NOTE "J" ON PAGE 2 AND PLAN VIEWS ON PAGE 5.
- ③ HEADER, 2" X 6" BY CAR WIDTH (TRIPLD) (3 REQD). NAIL FIRST PIECE TO CAR FLOOR W/1-30d NAIL EVERY 8". NAIL EACH ADDITIONAL PIECE TO FIRST PIECE W/1-60d NAIL EVERY 8".
- ④ SOLID FILL, 2" X 6" X 57" AND 1" X 6" X 57" AT ONE LOCATION, 2" X 6" X 42" AND 1" X 6" X 42" AT ONE LOCATION. NAIL TO LOWER HEADER W/4-10d NAILS EACH LAMINATION.
- ⑤ HEADER, 2" X 6" X 44" (TRIPLD) (3 REQD). NAIL FIRST PIECE TO CAR FLOOR W/5-30d NAILS. NAIL EACH ADDITIONAL PIECE W/5-60d NAILS.
- ⑥ HEADER, 2" X 6" X 8'-6" (TRIPLD) (1 REQD). NAIL FIRST PIECE TO CAR FLOOR W/1-30d NAIL EVERY 8". NAIL EACH ADDITIONAL PIECE TO FIRST PIECE W/1-60d NAIL EVERY 8".
- ⑦ HEADER, 2" X 6" X 60" (TRIPLD) (1 REQD). NAIL FIRST PIECE TO CAR FLOOR W/8-30d NAILS. NAIL EACH ADDITIONAL PIECE TO FIRST PIECE W/8-60d NAILS.
- ⑧ HEADER, 2" X 6" X 50" (TRIPLD) (1 REQD). NAIL FIRST PIECE TO CAR FLOOR W/6-30d NAILS. NAIL EACH ADDITIONAL PIECE TO FIRST PIECE W/6-60d NAILS.
- ⑨ BACKUP, 2" X 6" X 30" (TRIPLD) (14 REQD). NAIL FIRST PIECE TO CAR FLOOR W/5-30d NAILS. NAIL EACH ADDITIONAL PIECE TO FIRST PIECE W/5-60d NAILS.
- ⑩ STRUTS, 2" X 6" BY CUT TO FIT (TRIPLD) (2 REQD). NAIL FIRST PIECE TO CAR FLOOR W/3-30d NAILS. NAIL EACH ADDITIONAL PIECE W/3-60d NAILS.
- ⑪ SIDE BLOCKING, 2" X 6" X 18" (2 REQD). POSITION AGAINST CONTAINER RUBBING STRIP AND NAIL TO CAR FLOOR W/3-30d NAILS.
- ⑫ SIDE BLOCKING, 2" X 4" X 18" (2 REQD). POSITION ON TOP OF PIECE MARKED ⑪ AGAINST CONTAINER SIDE PANEL AND NAIL W/3-30d NAILS.
- ⑬ SIDE BLOCKING, 2" X 6" X 30" (4 REQD). POSITION AGAINST RUBBING STRIP AND NAIL TO CAR FLOOR W/5-30d NAILS.
- ⑭ SIDE BLOCKING, 2" X 4" X 30" (4 REQD). POSITION ON TOP OF PIECE MARKED ⑬ AGAINST CONTAINER SIDE PANEL AND NAIL W/5-30d NAILS.
- ⑮ HOLD-DOWN STRAP, 2" X .050" X 32'-0" STEEL STRAP (2 REQD). INSTALL EACH STRAP FROM TWO (2) 16'-0" LONG PIECES. SEE GENERAL NOTE "G" ON PAGE 2.
- ⑯ HOLD-DOWN STRAP, 2" X .050" X 30'-0" STEEL STRAP (4 REQD). INSTALL EACH STRAP FROM TWO (2) 15'-0" LONG PIECES.
- ⑰ HOLD-DOWN STRAP, 2" X .050" X 28'-0" STEEL STRAP (3 REQD). INSTALL EACH STRAP FROM TWO (2) 14'-0" LONG PIECES.
- ⑱ HOLD-DOWN STRAP, 2" X .050" X 26'-0" STEEL STRAP (1 REQD). INSTALL STRAP FROM TWO (2) 13'-0" LONG PIECES.

(KEY NUMBERS CONTINUED ON PAGE 5)



PRE-POSITIONED DUNNAGE PLAN VIEW



DUNNAGE PLAN VIEW

SPECIAL NOTES:

THE 2" HOLD-DOWN STRAPS HAVE BEEN OMITTED FROM THIS VIEW FOR CLARITY.

1. A 41'-6" LONG BY 9'-4" WIDE (PLATFORM) CAR WITH STAKE POCKETS SPACED 42" ON CENTER IS SHOWN. A LONGER OR WIDER FLAT CAR MAY BE USED; HOWEVER, A LONGER CAR SHOULD NOT BE ORDERED FOR THIS SHIPMENT.
2. IF A 10'-6" WIDE (PLATFORM) FLAT CAR IS USED FOR THIS LOAD CONFIGURATION, ALL PRE-POSITIONED DUNNAGE MAY BE OMITTED, AND PARALLEL SIDE BLOCKING METHOD SHOWN AS PIECES MARKED (11), (12), (13) AND (14), MAY BE INSTALLED. USE 2" X 6" X 24" FOR FIRST PIECE AND NAIL TO CAR FLOOR W/4-30d NAILS. USE 2" X 4" X 24" FOR SECOND PIECE AND NAIL TO FIRST W/4-30d NAILS. LATERAL SIDE BLOCKING, 2" X 6" X 18" (DOUBLED) MAY BE USED IN LIEU OF PARALLEL BLOCKING IF SURFACE AREA IS AVAILABLE.
3. FOR INSTALLATION OF PRE-POSITIONED SIDE BLOCKING TO BE USED IN THIS SHIPMENT, SEE DUNNAGE PLAN VIEW ABOVE.
4. IF THE FLAT CAR BEING LOADED HAS STEEL BOLSTERS, SEE "END BLOCKING FOR CARS WITH EXPOSED STEEL BOLSTERS" DETAIL ON PAGE 3, FOR SPECIAL GUIDANCE WHICH MAY BE APPLIED.
5. STARTING POINT FOR THIS SHIPMENT SHOULD BE FROM THE HEADER, PIECE MARKED (3), WHICH IS ADJACENT TO THE SECTION A-A CUTTING PLANE. SEE THE LOCATION DIMENSION BY THE "DUNNAGE PLAN VIEW".

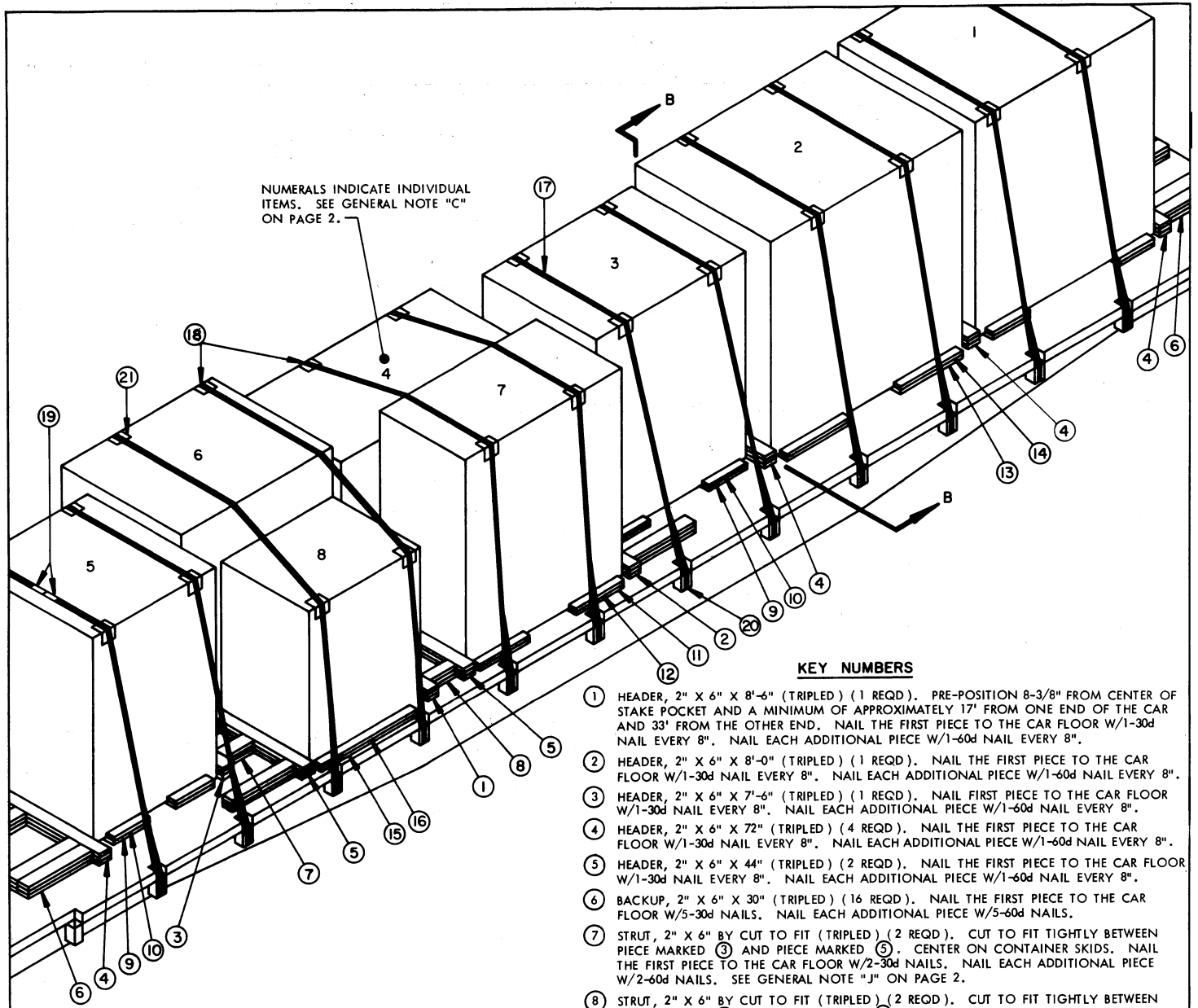
(KEY NUMBERS CONTINUED FROM PAGE 4)

- (19) SEAL FOR 2" STRAPPING (80 REQD, 8 PER STRAP). EXCEPT FOR THE SEALS USED TO SECURE THE PADS, DOUBLE CRIMP EACH SEAL. SEE "DETAIL A" ON PAGE 3 AND GENERAL NOTE "F" ON PAGE 2.
- (20) PAD, 2" X .050" STEEL STRAPPING 24" LONG (20 REQD). POSITION UNDER AND SEAL TO A HOLD-DOWN STRAP. SEE "DETAIL A" ON PAGE 3. ALT: STAKE POCKET PROTECTOR, SIGNODE NO. 1 (OR EQUAL (40 REQD)). TWO (2) USED UNDER EACH STAKE POCKET WITH A HOLD-DOWN STRAP. SEE "DETAIL B" ON PAGE 3.
- (21) EDGE PROTECTOR FOR 2" STRAPPING (20 REQD). POSITION UNDER A HOLD-DOWN STRAP AT TOP EDGE OF LOAD. SEE GENERAL NOTE "K" ON PAGE 2.

BILL OF MATERIAL		
LUMBER	LINEAR FEET	BOARD FEET
1" X 6"	9	5
2" X 4"	13	9
2" X 6"	347	347
NAILS	NO. REQD	POUNDS
10d (3")	4	NIL
30d (4-1/2")	288	14-1/2
60d (6")	320	32
STEEL STRAPPING, 2" X .050"	334' REQD	111 LBS
SEAL FOR 2" STRAPPING	80 REQD	16 LBS
EDGE PROTECTORS	20 REQD	5 LBS

LOAD AS SHOWN

ITEM	QUANTITY	WEIGHT (APPROX)
FIXED HIPAR RADAR SET (CRATED)	1	34,925 LBS
DUNNAGE		1,086 LBS
TOTAL WEIGHT		36,011 LBS



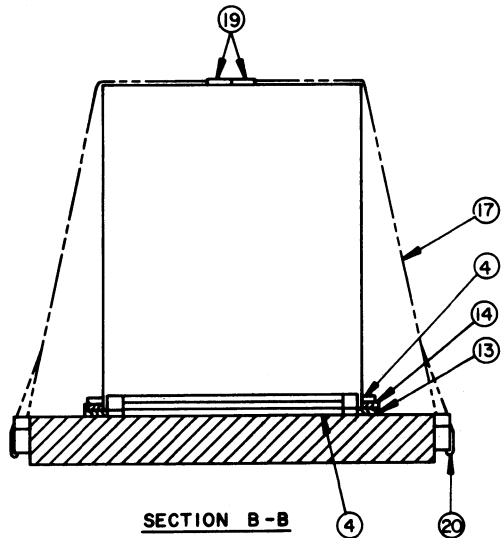
NUMERALS INDICATE INDIVIDUAL ITEMS. SEE GENERAL NOTE "C" ON PAGE 2.

KEY NUMBERS

- ① HEADER, 2" X 6" X 8'-6" (TRIPLED) (1 REQD). PRE-POSITION 8-3/8" FROM CENTER OF STAKE POCKET AND A MINIMUM OF APPROXIMATELY 17' FROM ONE END OF THE CAR AND 33' FROM THE OTHER END. NAIL THE FIRST PIECE TO THE CAR FLOOR W/1-30d NAIL EVERY 8". NAIL EACH ADDITIONAL PIECE W/1-60d NAIL EVERY 8".
- ② HEADER, 2" X 6" X 8'-0" (TRIPLED) (1 REQD). NAIL THE FIRST PIECE TO THE CAR FLOOR W/1-30d NAIL EVERY 8". NAIL EACH ADDITIONAL PIECE W/1-60d NAIL EVERY 8".
- ③ HEADER, 2" X 6" X 7'-6" (TRIPLED) (1 REQD). NAIL FIRST PIECE TO THE CAR FLOOR W/1-30d NAIL EVERY 8". NAIL EACH ADDITIONAL PIECE W/1-60d NAIL EVERY 8".
- ④ HEADER, 2" X 6" X 72" (TRIPLED) (4 REQD). NAIL THE FIRST PIECE TO THE CAR FLOOR W/1-30d NAIL EVERY 8". NAIL EACH ADDITIONAL PIECE W/1-60d NAIL EVERY 8".
- ⑤ HEADER, 2" X 6" X 44" (TRIPLED) (2 REQD). NAIL THE FIRST PIECE TO THE CAR FLOOR W/1-30d NAIL EVERY 8". NAIL EACH ADDITIONAL PIECE W/1-60d NAIL EVERY 8".
- ⑥ BACKUP, 2" X 6" X 30" (TRIPLED) (16 REQD). NAIL THE FIRST PIECE TO THE CAR FLOOR W/5-30d NAILS. NAIL EACH ADDITIONAL PIECE W/5-60d NAILS.
- ⑦ STRUT, 2" X 6" BY CUT TO FIT (TRIPLED) (2 REQD). CUT TO FIT TIGHTLY BETWEEN PIECE MARKED ③ AND PIECE MARKED ⑤. CENTER ON CONTAINER SKIDS. NAIL THE FIRST PIECE TO THE CAR FLOOR W/2-30d NAILS. NAIL EACH ADDITIONAL PIECE W/2-60d NAILS. SEE GENERAL NOTE "J" ON PAGE 2.
- ⑧ STRUT, 2" X 6" BY CUT TO FIT (TRIPLED) (2 REQD). CUT TO FIT TIGHTLY BETWEEN PIECE MARKED ⑤ AND PIECE MARKED ①. CENTER ON CONTAINER SKIDS. NAIL THE FIRST PIECE TO THE CAR FLOOR W/2-30d NAILS. NAIL EACH ADDITIONAL PIECE W/2-60d NAILS.
- ⑨ SIDE BLOCKING, 2" X 6" X 18" (12 REQD). POSITION AGAINST CONTAINER RUBBING STRIP AND NAIL TO THE CAR FLOOR W/3-30d NAILS.
- ⑩ SIDE BLOCKING, 2" X 4" X 18" (12 REQD). POSITION ON TOP OF PIECE MARKED ⑨ AGAINST CONTAINER SIDE PANEL AND NAIL W/3-30d NAILS.
- ⑪ SIDE BLOCKING, 2" X 6" X 24" (6 REQD). POSITION AGAINST CONTAINER RUBBING STRIP AND NAIL TO THE CAR FLOOR W/4-30d NAILS.
- ⑫ SIDE BLOCKING, 2" X 4" X 24" (6 REQD). POSITION ON TOP OF PIECE MARKED ⑪ AGAINST CONTAINER SIDE PANEL AND NAIL W/4-30d NAILS.
- ⑬ SIDE BLOCKING, 2" X 6" X 30" (4 REQD). POSITION AGAINST CONTAINER RUBBING STRIP AND NAIL TO THE CAR FLOOR W/5-30d NAILS.
- ⑭ SIDE BLOCKING, 2" X 4" X 30" (4 REQD). POSITION ON TOP OF PIECE MARKED ⑬ AGAINST CONTAINER SIDE PANEL AND NAIL W/5-30d NAILS.
- ⑮ SIDE BLOCKING, 2" X 6" X 48" (1 REQD). POSITION AGAINST CONTAINER RUBBING STRIP AND NAIL TO THE CAR FLOOR W/8-30d NAILS.
- ⑯ SIDE BLOCKING, 2" X 4" X 48" (1 REQD). POSITION ON TOP PIECE MARKED ⑮ AND AGAINST CONTAINER SIDE PANEL AND NAIL W/8-30d NAILS.
- ⑰ STEEL HOLD-DOWN STRAP, 2" X .050" X 30'-0" (8 REQD). INSTALL EACH STRAP FROM TWO (2) 15'-0" SECTIONS.
- ⑱ STEEL HOLD-DOWN STRAP, 2" X .050" X 34'-0" (4 REQD). INSTALL EACH STRAP FROM TWO (2) SECTIONS, ONE 16'-0" LONG, FROM THE SIDE OF THE TALLER CONTAINER, AND THE OTHER, 18'-0" LONG, FROM THE SIDE OF THE SHORTER CONTAINER.
- ⑲ SEAL FOR 2" STRAPPING (% REQD, 8 PER STRAP). EXCEPT FOR THE SEALS USED TO SECURE THE PADS, DOUBLE CRIMP EACH SEAL. SEE "DETAIL A" ON PAGE 3 AND GENERAL NOTE "F" ON PAGE 2.

(KEY NUMBERS CONTINUED ON PAGE 7)

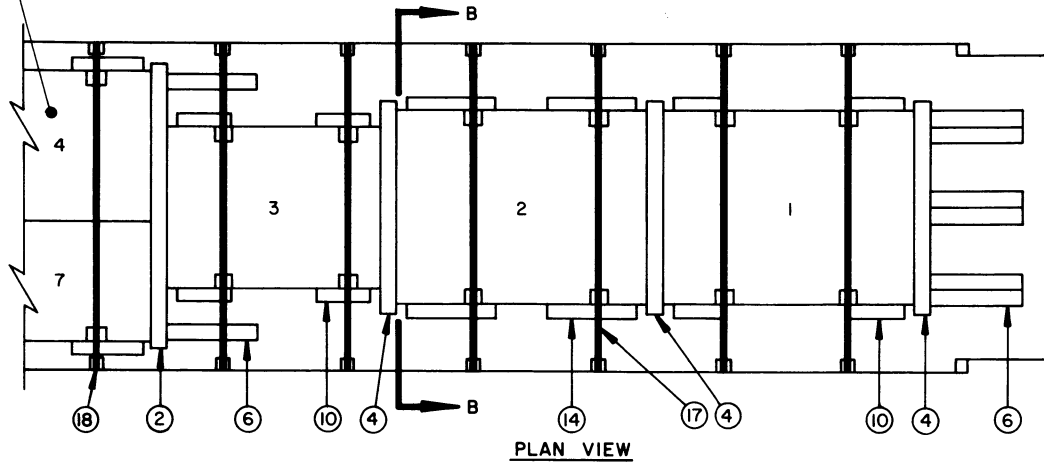
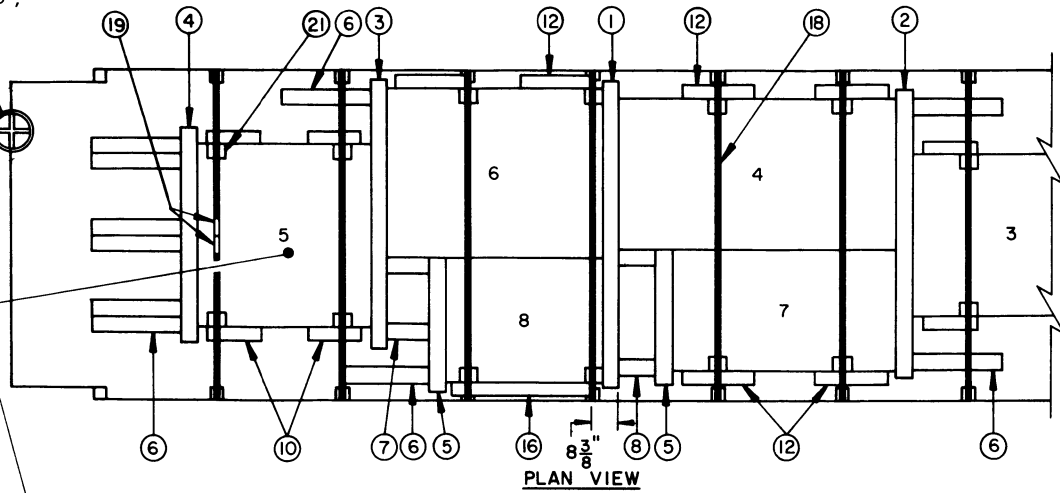
ISOMETRIC VIEW



SECTION B-B

SEE GENERAL NOTE "D",
ON PAGE 2.

NUMERALS INDICATE
INDIVIDUAL ITEMS.
SEE GENERAL NOTE
"C" ON PAGE 2.



SPECIAL NOTES:

1. A 50'-0" LONG BY 9'-2" WIDE (PLATFORM) CAR WITH STAKE POCKETS SPACED 42" ON CENTER IS SHOWN. A LONGER OR A WIDER FLAT CAR MAY BE USED; HOWEVER, A CAR LONGER THAN 50'-6" SHOULD NOT BE ORDERED FOR THIS SHIPMENT.
2. STARTING POINT FOR THIS SHIPMENT SHOULD BE FROM THE TRIPLED HEADER PIECE MARKED (1). POSITION FRONT EDGE OF HEADER 8-3/8" FROM CENTER OF FIFTH STAKE POCKET, AND LOADING MAY BE IN BOTH DIRECTIONS. SEE THE LOCATION DIMENSION BY THE "PLAN VIEW".

(KEY NUMBERS CONTINUED FROM PAGE 6)

- (20) PAD, 2" X .050" STEEL STRAPPING 24" LONG (24 REQD). POSITION UNDER AND SEAL TO A HOLD-DOWN STRAP. SEE "DETAIL A" ON PAGE 3. ALT: STAKE POCKET PROTECTOR, SIGNODE NO. 1 (OR EQUAL) (48 REQD). TWO (2) USED UNDER EACH STAKE POCKET WITH A HOLD-DOWN STRAP. SEE "DETAIL B" ON PAGE 3.
- (21) EDGE PROTECTOR FOR 2" STRAPPING (24 REQD). POSITION UNDER A HOLD-DOWN STRAP AT TOP EDGE OF LOAD. SEE GENERAL NOTE "K" ON PAGE 2.

BILL OF MATERIAL		
LUMBER	LINEAR FEET	BOARD FEET
2" X 4"	44	30
2" X 6"	349	349
NAILS	NO. REQD	POUNDS
30d (4-1/2")	348	17-1/2
60d (6")	344	34-1/2
STEEL STRAPPING, 2" X .050"	424' REQD	142 LBS
SEALS FOR 2" STRAPPING	96 REQD	19 LBS
EDGE PROTECTORS	24 REQD	6 LBS

LOAD AS SHOWN

ITEM	QUANTITY	WEIGHT (APPROX)
FIXED HIPAR RADAR SET (CRATED)*	1	34,925 LBS
DUNNAGE		1,167 LBS
TOTAL WEIGHT		36,092 LBS

*FOR INDIVIDUAL ITEMS, SEE GENERAL NOTE "C".

