

REV NO. 1 APPROVED BY
 MECH DIV AAR, THEIR LETTER
 DATED APR 8, 1980 FILE LR-11.0.70
 SIGNED R. W. Masblock
 DATE 22 APRIL 1980
 TEA, MTMC, FT EUSTIS, VA.

CHAPARRAL

LOADING AND BRACING ON FLAT CAR OF GUIDED MISSILE SYSTEM, INTERCEPT AERIAL, M54 AND M54A1

INDEX

<u>ITEM</u>	<u>PAGE (S)</u>
GENERAL NOTES, AND MATERIAL SPECIFICATIONS -----	2
DETAILS -----	2,3
UNCRATED-MOUNTED ON SKID BASE -----	4,5
CRATED -----	6,7
UNCRATED-MOUNTED ON ALUMINUM BLOCKS -----	8-10

THIS DRAWING, INCLUDING REVISION 1, SUPERSEDES
 DRAWING 19-48-7880-GSE 5CH4, DATED MARCH 1971.

REVISIONS		DRAFTSMAN P.B. / mlk	PROJ ENG MWD / New	DRSMI-SP m / jmr
1	SEPT 79	CHECKER RSH / BJB	LOG ENGIN OFFICE WJ / Jm	
		APPROVED, U.S. ARMY MISSILE COMMAND		
		<div style="display: flex; justify-content: space-between;"> <div style="width: 40%;"><i>William J. Hogue</i></div> <div style="width: 40%;"><i>John S. Boyd Jr.</i></div> </div>		
		APPROVED BY ORDER OF COMMANDING GENERAL, U.S. ARMY MATERIEL DEVELOPMENT AND READINESS COMMAND (DARCOM)		
		<div style="display: flex; justify-content: space-between;"> <div style="width: 40%;"><i>William J. Hogue</i></div> <div style="width: 40%;"><i>John S. Boyd Jr.</i></div> </div>		
		U.S. ARMY DARCOM DRAWING		
		SEPTEMBER 1979		
CLASS	DIVISION	DRAWING	FILE	
19	48	7180	GSE 5CH4	

DO NOT SCALE

GENERAL NOTES

- A. THIS DOCUMENT HAS BEEN PREPARED AND ISSUED IN ACCORDANCE WITH AR 740-1.
- B. THE LOADS SHOWN ON PAGES 4 THRU 7 ARE BASED ON FLAT CARS 10'-0" WIDE (PLATFORM). THE LOADS SHOWN ON PAGES 8 THRU 10 ARE BASED ON FLAT CARS 9'-2" WIDE (PLATFORM). WIDER CARS CAN BE USED. ONLY ONE UNIT OF LADING IS SHOWN; HOWEVER, MULTIPLES OF UNITS, AS SHOWN OR DISSIMILAR IN NATURE, MAY BE LOADED ON A CAR IF SPACE PERMITS. THE NUMBER OF UNITS TO BE LOADED ON A CAR WILL BE DEPENDENT ON THE SIZE OF THE CAR USED OR THE QUANTITIES OF UNITS TO BE SHIPPED WITH THE VIEW OF FULL UTILIZATION OF CARRIER EQUIPMENT.
- C. LADING DATA (UNCRATED--MOUNTED ON SKID BASE):
 ITEM DIMENSIONS ----- 11'-10-3/4" LONG BY 8'-8" WIDE BY 7'-11-1/4" HIGH.
 ITEM GROSS WEIGHT ----- 10,924 POUNDS (APPROX).

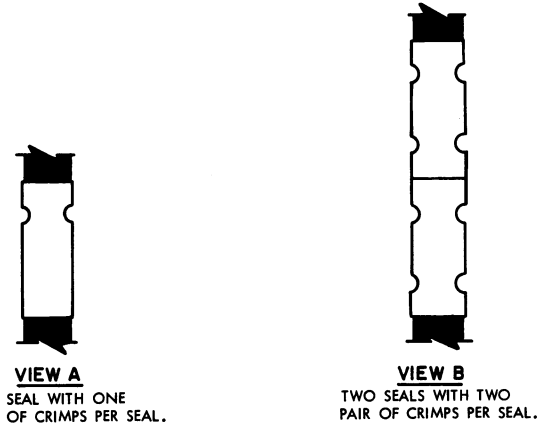
 LADING DATA (UNCRATED--MOUNTED ON ALUMINUM BLOCKS):
 ITEM DIMENSIONS ----- 10'-8-1/2" LONG BY 7'-10-3/8" WIDE BY 7'-3-3/4" HIGH.
 ITEM GROSS WEIGHT ----- 9,720 POUNDS (APPROX).

 LADING DATA (CRATED):
 ITEM DIMENSIONS ----- 11'-11-3/4" LONG BY 8'-9" WIDE BY 8'-6-7/8" HIGH.
 ITEM GROSS WEIGHT ----- 12,270 POUNDS (APPROX).
- D. REFER TO ORD DWG 19-48-C-ORDJU-588, "WIRE ROPE AND ANNEALED WIRE APPLICATION METHODS FOR SECURING LADING ON RAIL & MOTOR CARRIER EQUIP", FOR PROPER TIE DOWN APPLICATION.
- E. REFER TO ASSOCIATION OF AMERICAN RAILROADS MANUAL, "GENERAL RULES GOVERNING THE LOADING OF COMMODITIES ON OPEN TOP CARS", FOR APPLICABLE LOADING RULES; PREFACE, 1-A, 2, 3, 4, 5, 9, 14, AND 15.
- F. WIRE ROPE CABLE TENSIONING CAN BE ACCOMPLISHED BY EMPLOYING TWO (2) CABLE "GRIPPERS" AND AN APPLICABLY SIZED "COME-A-LONG" TYPE MECHANICAL HOIST.
- G. ONLY CARS WITH "SOUND" FLOORS WILL BE USED. CARS WITH STEEL FLOOR ENDS AND/OR EXPOSED STEEL BOLSTERS WHICH INTERFERE WITH PROPER POSITIONING OR NAILING OF THE DUNNAGE WILL NOT BE USED. SEE "END BLOCKING FOR CARS WITH EXPOSED STEEL BOLSTERS (TOP VIEW)" DETAIL ON PAGE 3.
- H. WHEN ANY STRAP IS SEALED AT AN END-OVER-END LAP JOINT, OR AS SHOWN IN DETAILS "A" AND "B" BELOW, A MINIMUM OF TWO (2) SEALS (BUTTED TOGETHER) WITH TWO (2) PAIRS OF CRIMPS PER SEAL MUST BE USED.
- J. CAUTION: STAKE POCKETS WILL BE USED FOR ALL TIE DOWN STRAPPING WHENEVER POSSIBLE. DO NOT USE SWIVEL RING TYPE ANCHOR DEVICES. IF OTHER TYPES ARE USED, THEY MUST BE OF SUFFICIENT WIDTH TO RECEIVE 2" STRAP.
- K. DUNNAGE LUMBER SPECIFIED THROUGHOUT THIS PROCEDURAL DRAWING IS OF NOMINAL SIZE UNLESS OTHERWISE DIMENSIONED. FOR EXAMPLE, 2" X 6" MATERIAL IS ACTUALLY 1-1/2" THICK BY 5-1/2" WIDE AND 4" X 6" MATERIAL IS ACTUALLY 5-1/2" THICK BY 5-1/2" WIDE.
- L. NOTICE: A STAGGERED NAILING PATTERN WILL BE USED WHEN DUNNAGE IS NAILED TO THE FLOOR OF THE TRANSPORTING VEHICLE, OR WHEN LAMINATING DUNNAGE. ADDITIONALLY, THE NAILING PATTERN FOR AN UPPER PIECE OF LAMINATED DUNNAGE WILL BE ADJUSTED AS REQUIRED SO THAT A NAIL FOR THAT PIECE WILL NOT BE DRIVEN THROUGH ONTO OR RIGHT BESIDE A NAIL IN A LOWER PIECE. SEE "APPLICATION OF STAGGERED NAILING PATTERN" ON PAGE 4.

REVISIONS

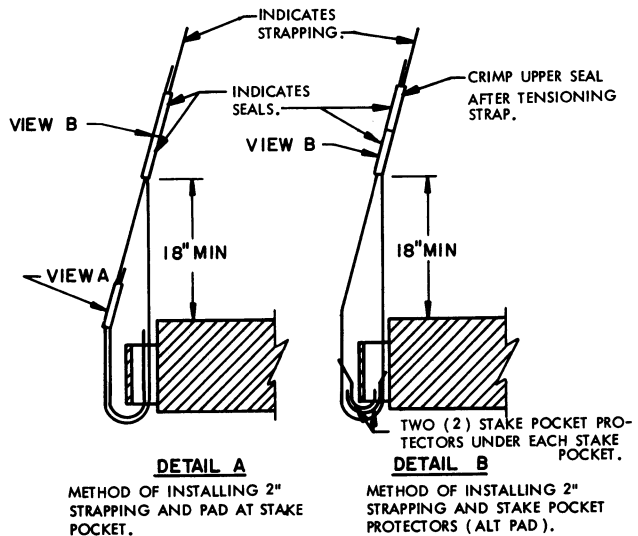
REVISION NO. 1, DATED SEPTEMBER 1979, CONSISTS OF:

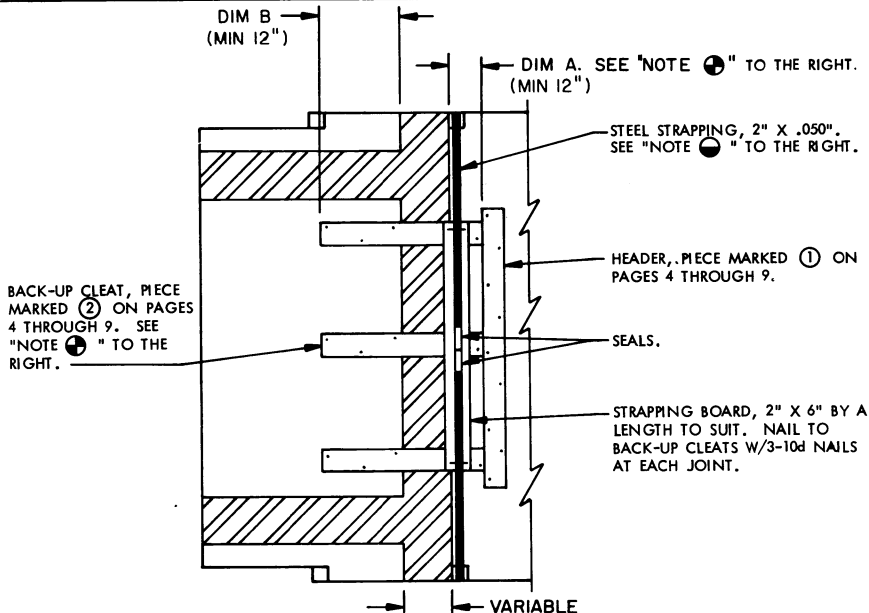
1. DELETING X FROM XMS4.
2. ADDING M54A1 TO THE TITLE.
3. ADDING APPLICATION OF STAGGERED NAILING PATTERN ON PAGES 6 AND 8.
4. CHANGING "GENERAL NOTES" AND "MATERIAL SPECIFICATIONS" TO CONFORM TO CURRENT STANDARDS.



MATERIAL SPECIFICATIONS

- LUMBER** ----- : DOUGLAS FIR OR COMPARABLE LUMBER WITH STRAIGHT GRAIN AND FREE OF MATERIAL DEFECTS. REF: FED SPEC MM-L-751.
- NAILS** ----- : COMMON. REF: FED SPEC FF-N-105.
- ROPE** ----- : STEEL WIRE, PLAIN, PREFORMED, REGULAR LAY, 11.5 TONS, 6 X 19, FLEXIBLE IWRC, MACWHYTE WIRE ROPE CO (OR EQUAL). REF: FED SPEC RR-W-410.
- CLIPS** ----- : "U" BOLT, CROSBY, HEAVY DUTY (OR EQUAL). REF: FED SPEC FF-C-450, TYPE I, CLASS I.
- STRAPPING, STEEL** ----- : CLASS I, TYPE I, HEAVY DUTY, FINISH A, B (GRADE 2), OR C. REF: FED SPEC QQ-5-781.
- STRAP SEAL** ----- : TYPE D, STYLE I, II, OR IV, CLASS H. REF: FED SPEC QQ-5-781.
- STRAP STAPLE, STAKE POCKET PROTECTOR** ----- : COMMERCIAL GRADE.



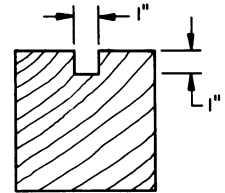


END BLOCKING FOR CARS WITH EXPOSED STEEL BOLSTERS
SEE GENERAL NOTE "G" ON PAGE 2.

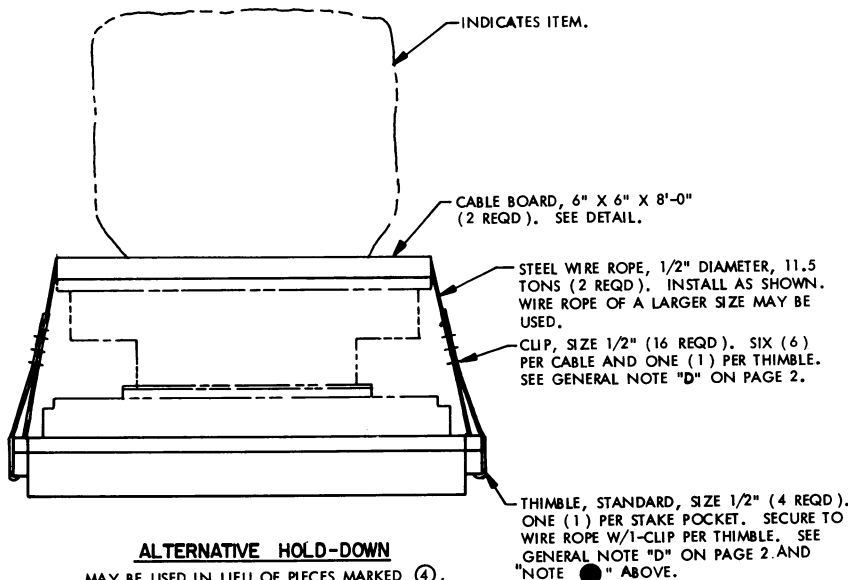
NOTE 1:
THE OPTIONAL STRAP HOLD DOWN FOR END BLOCKING IS FOR CARS WITH OR WITHOUT EXPOSED STEEL BOLSTERS.

NOTE 2:
WHEN LOADING CARS HAVING EXPOSED STEEL BOLSTERS, BOTH DIMENSION "A" AND DIMENSION "B" MUST BE AT LEAST 12", AND THE SUM OF DIMENSIONS "A" AND "B" MUST BE EQUAL TO OR GREATER THAN THE LENGTH OF A BACK-UP CLEAT (PIECE MARKED 2), TO PROVIDE FOR PROPER NAILING TO THE CAR FLOOR, SEE PIECE MARKED 2 ON PAGE 4 OR 6 OR 8.

NOTE 3:
A STANDARD THIMBLE AS SPECIFIED CAN BE SECURED TO A CABLE WITH A 1/2" CLIP. HOWEVER, IF DESIRED, OR IF THE 1/2" THIMBLE BEING USED IS OF A TYPE WHICH CANNOT BE SECURED TO A CABLE WITH A 1/2" CLIP, A 5/8" CLIP MAY BE USED.

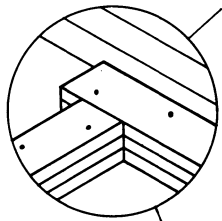


CABLE BOARD
6" X 6" MATERIAL. NOTCH AS SHOWN TO RETAIN CABLE.



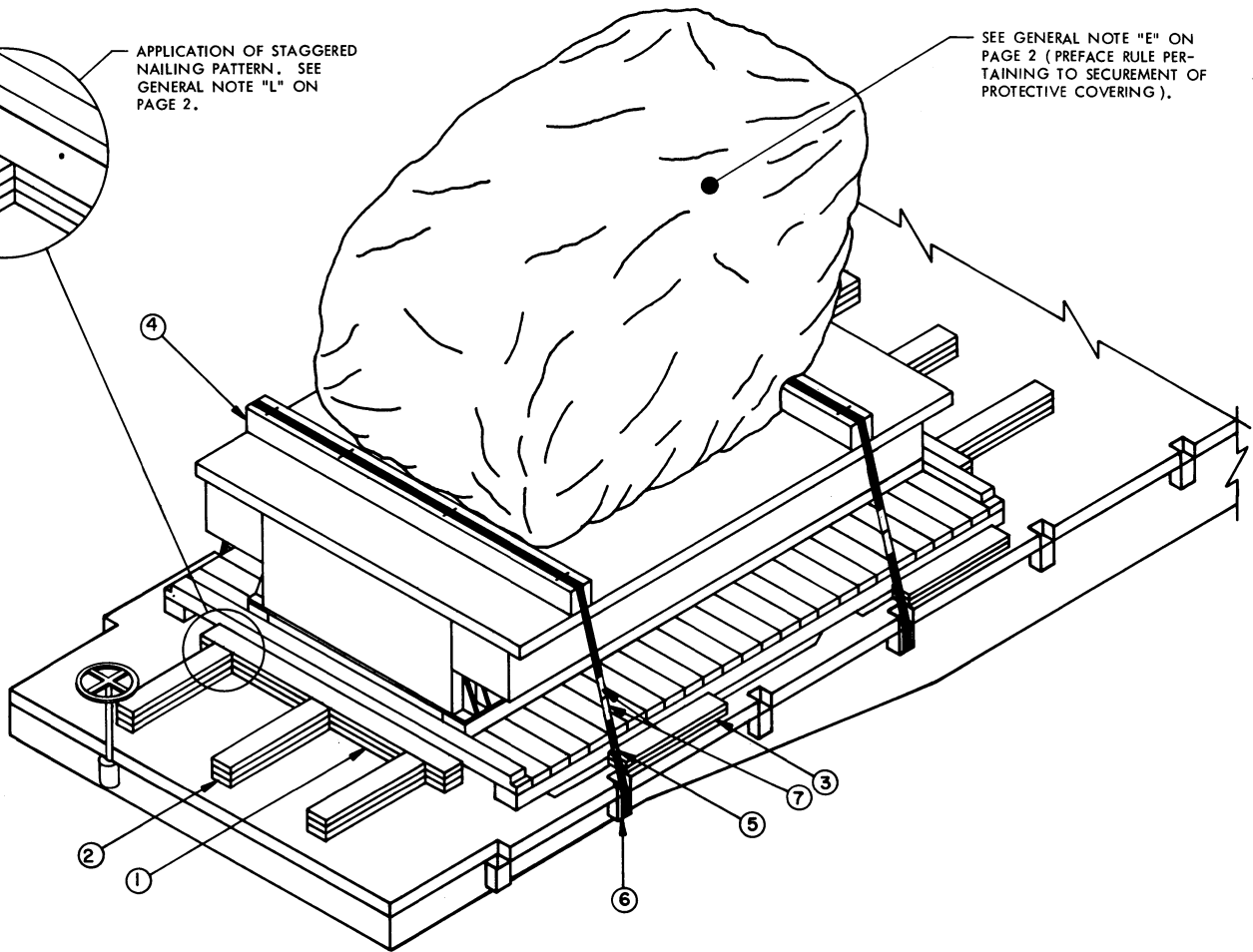
ALTERNATIVE HOLD-DOWN
MAY BE USED IN LIEU OF PIECES MARKED 4, 5, 6 AND 7 ON PAGES 4, 5, 8 AND 9.

DETAILS



APPLICATION OF STAGGERED NAILING PATTERN. SEE GENERAL NOTE "L" ON PAGE 2.

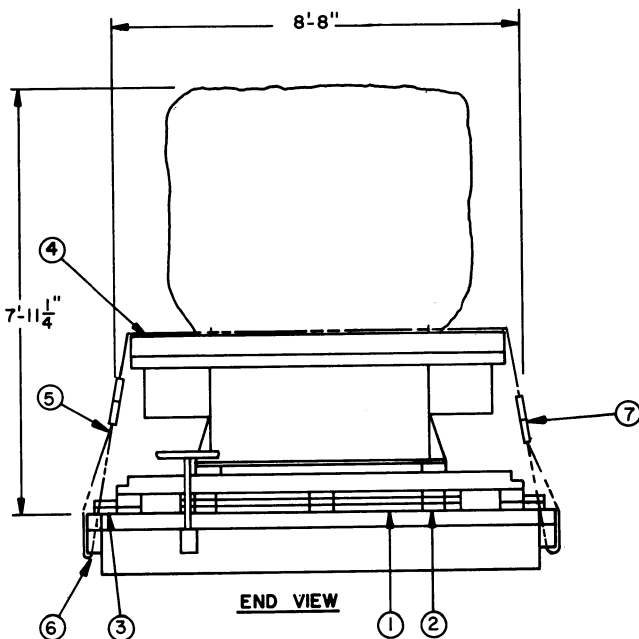
SEE GENERAL NOTE "E" ON PAGE 2 (PREFACE RULE PERTAINING TO SECUREMENT OF PROTECTIVE COVERING).



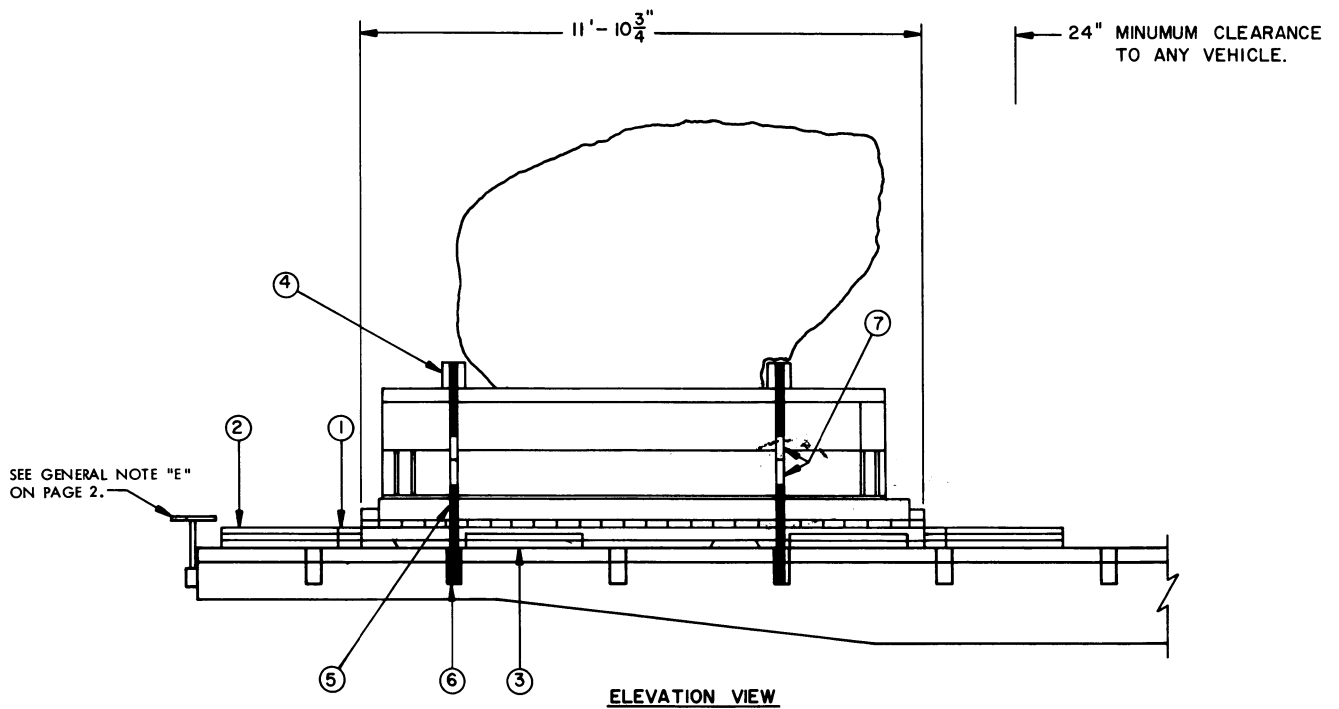
ISOMETRIC VIEW

KEY NUMBERS

- ① HEADER, 2" X 6" X 72" (TRIPLED) (2 REQD). NAIL THE FIRST PIECE TO THE CAR FLOOR W/9-30d NAILS. NAIL EACH ADDITIONAL PIECE W/9-60d NAILS. SEE GENERAL NOTE "L" ON PAGE 2.
- ② BACK-UP CLEAT, 2" X 6" X 30" (TRIPLED) (6 REQD). POSITION IN LINE WITH ITEM SKIDS AND NAIL THE FIRST PIECE TO THE CAR FLOOR W/5-30d NAILS. NAIL EACH ADDITIONAL PIECE W/5-60d NAILS.
- ③ SIDE BLOCKING, 2" X 6" X 30" (DOUBLED) (4 REQD). POSITION AGAINST ITEM SKID AND NAIL THE FIRST PIECE TO THE CAR FLOOR W/5-30d NAILS. NAIL THE SECOND PIECE TO THE FIRST IN A LIKE MANNER.
- ④ STRAPPING BOARD, 6" X 6" X 8'-0" (2 REQD).
- ⑤ STEEL STRAPPING, 2" X .050" X 32'-0" (2 REQD). STAPLE TO PIECE MARKED ④ W/4 STAPLES. SEE SPECIAL NOTE 2 ON PAGE 5.
- ⑥ PAD, 2" X .050" STRAP 24" LONG (4 REQD). POSITION UNDER AND SEAL TO PIECE MARKED ⑤. SEE "DETAIL A" ON PAGE 2. ALT: STAKE POCKET PROTECTOR, SIGNODE NO. 1 (OR EQUAL). (8 REQD). TWO (2) USED UNDER EACH STAKE POCKET WITH PIECE MARKED ⑤. SEE "DETAIL B" ON PAGE 2.
- ⑦ SEAL FOR 2" STRAPPING (12 REQD, 6 PER STRAP), EXCEPT FOR THE SEALS USED TO SECURE THE PADS, DOUBLE CRIMP EACH SEAL. SEE GENERAL NOTE "H" ON PAGE 2.



END VIEW



SPECIAL NOTES

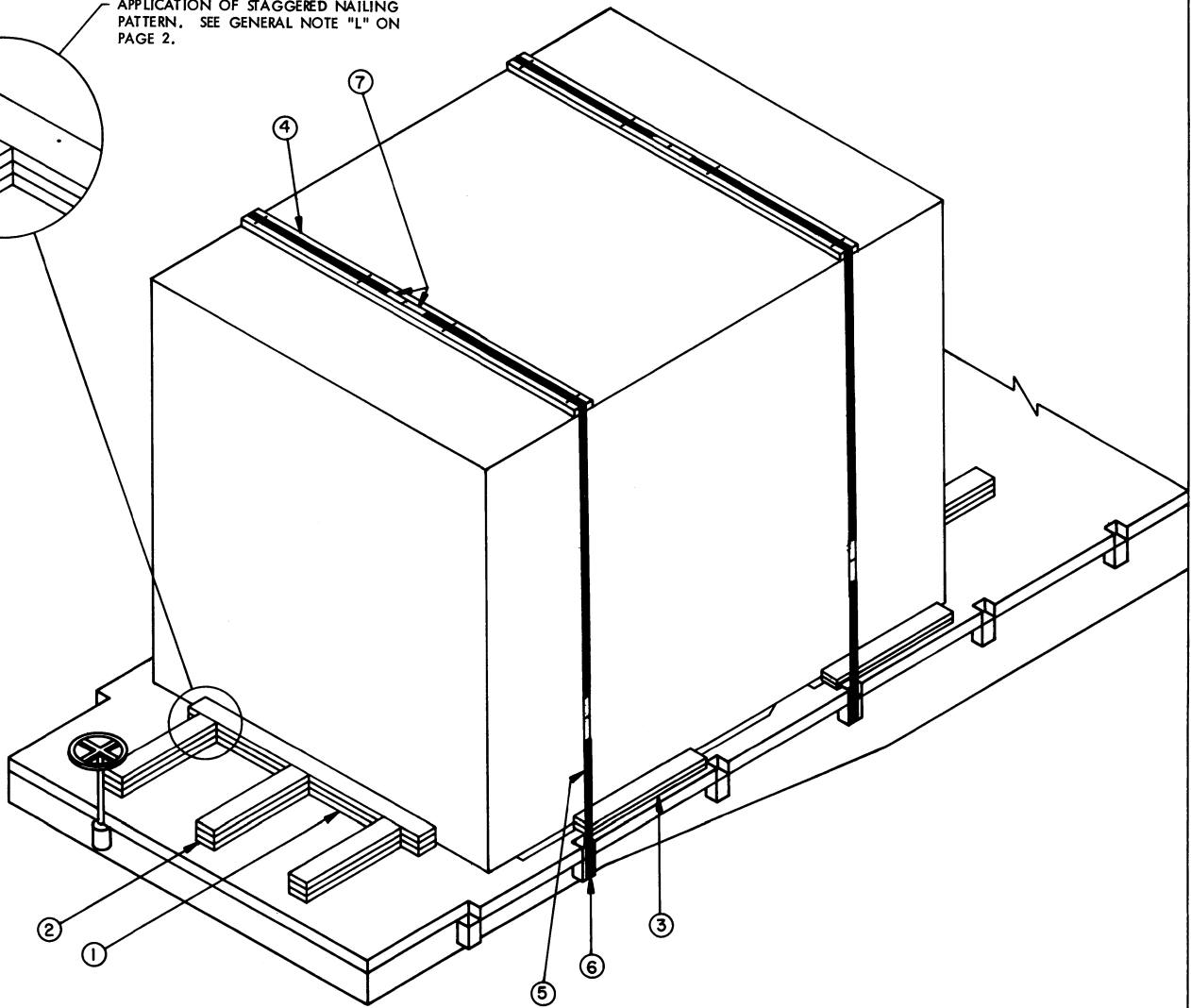
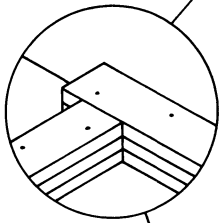
1. A ONE (1) UNIT LOAD IS SHOWN ON A 10'-0" WIDE (PLATFORM) FLAT CAR WITH STAKE POCKETS SPACED 42" ON CENTER. A WIDER OR NARROWER (9'-2" MINIMUM) FLAT CAR MAY BE USED.
2. 1/2" CABLE (OR LARGER) MAY BE USED IN LIEU OF 2" STRAPPING SHOWN AS PIECE MARKED (5). SEE GENERAL NOTES "D", "E", AND "F" ON PAGE 2. SEE "ALTERNATIVE HOLD-DOWN" DETAIL ON PAGE 3.
3. IF THE FLAT CAR BEING LOADED HAS EXPOSED BOLSTERS, SEE "END BLOCKING FOR CARS WITH EXPOSED STEEL BOLSTERS" DETAIL ON PAGE 3, FOR SPECIAL GUIDANCE WHICH MAY PERMIT USE OF SOME CARS THAT HAVE EXPOSED STEEL COMPONENTS.
4. ITEM MUST BE LOCATED ON CAR RELATIVE TO LOCATION OF STAKE POCKETS SO THAT WHEN PIECES MARKED (4) THROUGH (7) ARE APPLIED THEY WILL BE IN THE SAME GENERAL LOCATION RELATIVE TO THE ITEM AS SHOWN.

BILL OF MATERIAL		
LUMBER	LINEAR FEET	BOARD FEET
2" X 6"	101	101
6" X 6"	16	48
NAILS	NO. REQD	POUNDS
30d (4-1/2")	88	4-1/2
60d (6")	96	9-3/4
STEEL STRAPPING, 2" X .050"	72' REQD	24 LBS
SEAL FOR 2" STRAPPING	12 REQD	3 LBS
STAPLE FOR 2" STRAPPING	8 REQD	NIL

LOAD AS SHOWN

ITEM	QUANTITY	WEIGHT (APPROX)
INTERCEPT AERIAL		
ONSKID BASE	1	10,924 LBS
DUNNAGE		340 LBS
TOTAL WEIGHT		11,264 LBS

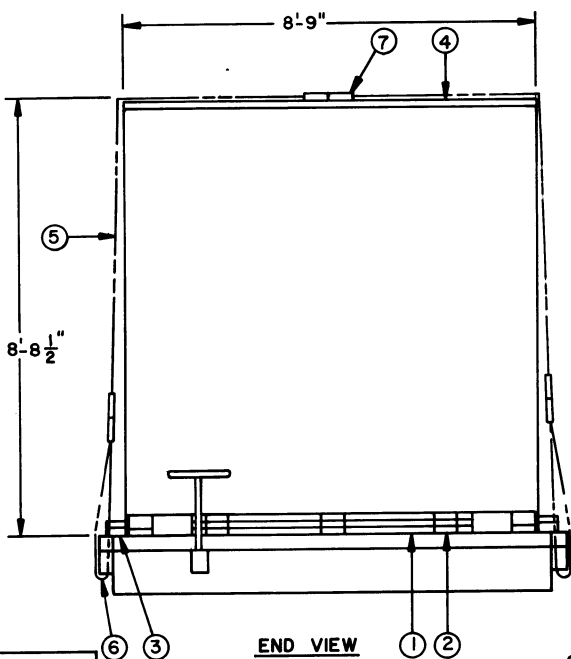
APPLICATION OF STAGGERED NAILING PATTERN. SEE GENERAL NOTE "L" ON PAGE 2.



ISOMETRIC VIEW

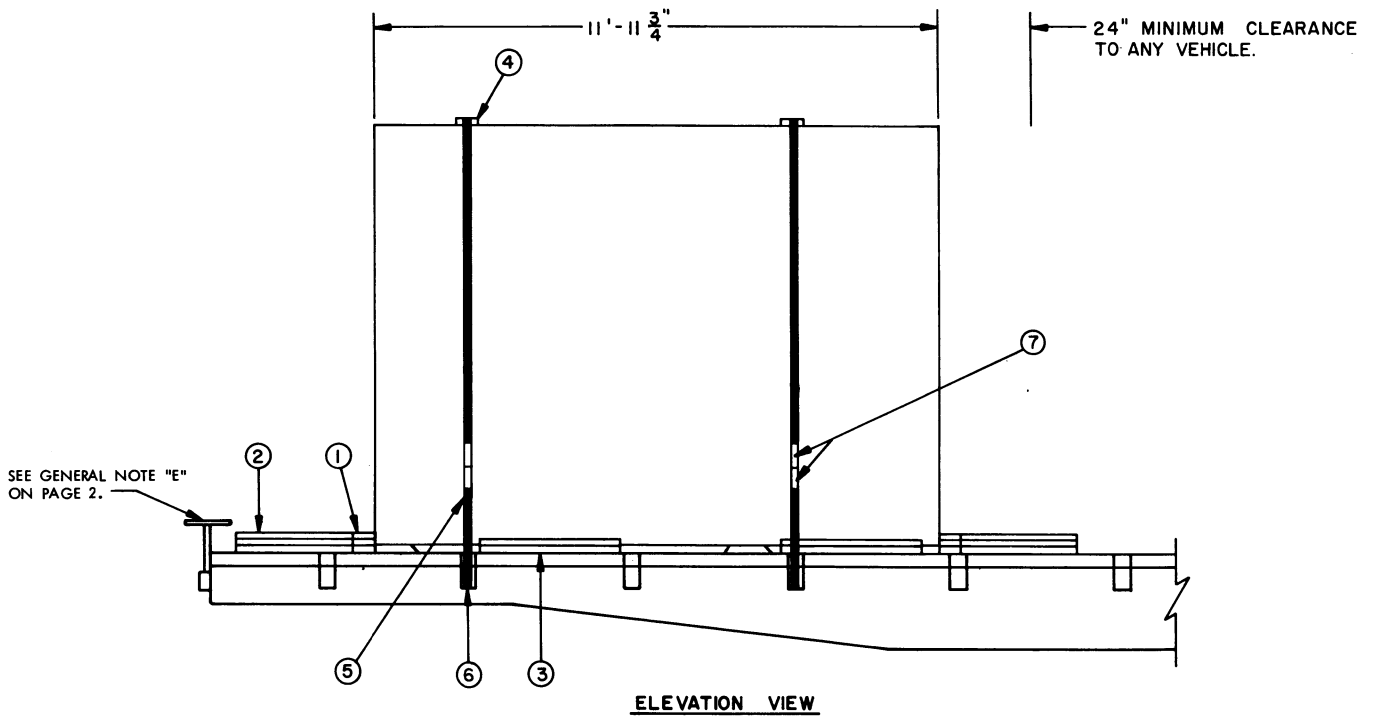
KEY NUMBERS

- ① HEADER, 2" X 6" X 72" (TRIPLED) (2 REQD). NAIL THE FIRST PIECE TO THE CAR FLOOR W/9-30d NAILS. NAIL EACH ADDITIONAL PIECE W/9-60d NAILS. SEE GENERAL NOTE "L" ON PAGE 2.
- ② BACK-UP CLEAT, 2" X 6" X 30" (TRIPLED) (6 REQD). POSITION IN LINE WITH ITEM SKIDS AND NAIL THE FIRST PIECE TO THE CAR FLOOR W/5-30d NAILS. NAIL EACH ADDITIONAL PIECE W/5-60d NAILS.
- ③ SIDE BLOCKING, 2" X 6" X 36" (DOUBLED) (4 REQD). POSITION AGAINST ITEM SKID AND NAIL THE FIRST PIECE TO THE CAR FLOOR W/6-30d NAILS. NAIL THE SECOND PIECE TO THE FIRST IN A LIKE MANNER.
- ④ STRAPPING BOARD, 2" X 6" BY CRATE WIDTH (2 REQD).
- ⑤ STEEL STRAPPING, 2" X .050" X 40'-0" (2 REQD). STAPLE TO PIECE MARKED ④ W/4 STAPLES.
- ⑥ PAD, 2" X .050" STRAP 24" LONG (4 REQD). POSITION UNDER AND SEAL TO PIECE MARKED ⑤. SEE "DETAIL A" ON PAGE 2. ALT: STAKE POCKET PROTECTOR, SIGNODE NO. 1 (OR EQUAL) (8 REQD). TWO (2) USED UNDER EACH STAKE POCKET WITH PIECE MARKED ⑤. SEE "DETAIL B" ON PAGE 2.
- ⑦ SEAL FOR 2" STRAPPING (16 REQD, 8 PER STRAP), EXCEPT FOR THE SEALS USED TO SECURE THE PADS, DOUBLE CRIMP EACH SEAL. SEE GENERAL NOTE "H" ON PAGE 2.



END VIEW

CRATED



SPECIAL NOTES

1. A ONE (1) UNIT LOAD IS SHOWN ON A 10'-0" WIDE (PLATFORM) FLAT CAR WITH STAKE POCKETS SPACED 42" ON CENTER. A WIDER FLAT CAR AND A CAR WITH POCKETS SPACED OTHER THAN SHOWN MAY BE USED.
2. IF THE FLAT CAR BEING LOADED HAS EXPOSED BOLSTERS, SEE "END BLOCKING FOR CARS WITH EXPOSED STEEL BOLSTERS" DETAIL ON PAGE 3, FOR SPECIAL GUIDANCE WHICH MAY PERMIT USE OF SOME CARS THAT HAVE EXPOSED STEEL COMPONENTS.
3. ITEM MUST BE LOCATED ON CAR RELATIVE TO LOCATION OF STAKE POCKETS SO THAT WHEN PIECES MARKED (4) THROUGH (7) ARE APPLIED THEY WILL BE IN THE SAME GENERAL LOCATION RELATIVE TO THE ITEM AS SHOWN.

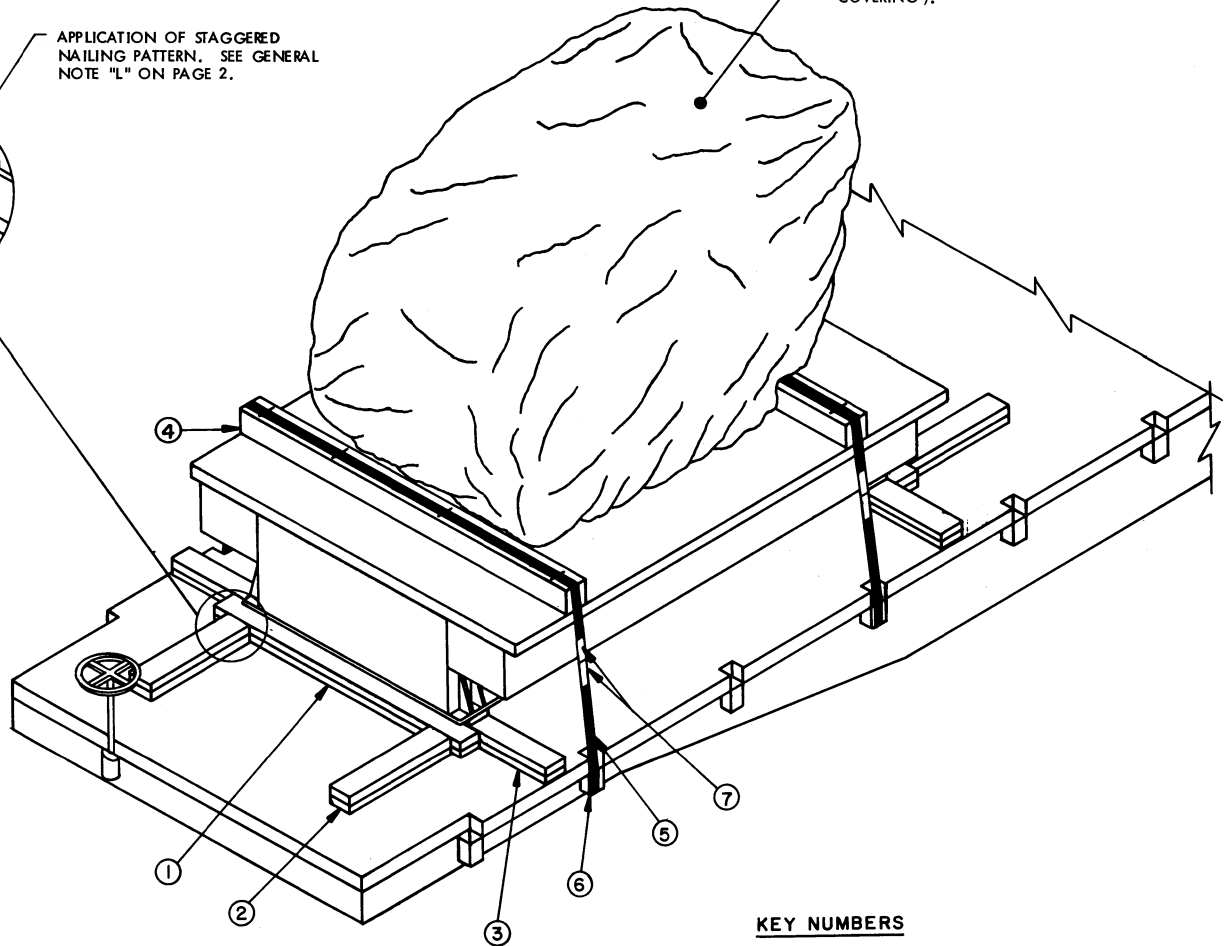
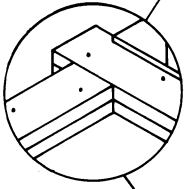
BILL OF MATERIAL		
LUMBER	LINEAR FEET	BOARD FEET
2" X 6"	123	123
NAILS		POUNDS
30d (4-1/2")	96	5
60d (6")	96	9-3/4
STEEL STRAPPING, 2" X .050"	88' REQD	29 LBS
SEAL FOR 2" STRAPPING	16 REQD	4 LBS
STAPLE FOR 2" STRAPPING	8 REQD	NIL

LOAD AS SHOWN

ITEM	QUANTITY	WEIGHT (APPROX)
INTERCEPT AERIAL (CRATED)	1	12,270 LBS
DUNNAGE		294 LBS
TOTAL WEIGHT		12,564 LBS

APPLICATION OF STAGGERED NAILING PATTERN. SEE GENERAL NOTE "L" ON PAGE 2.

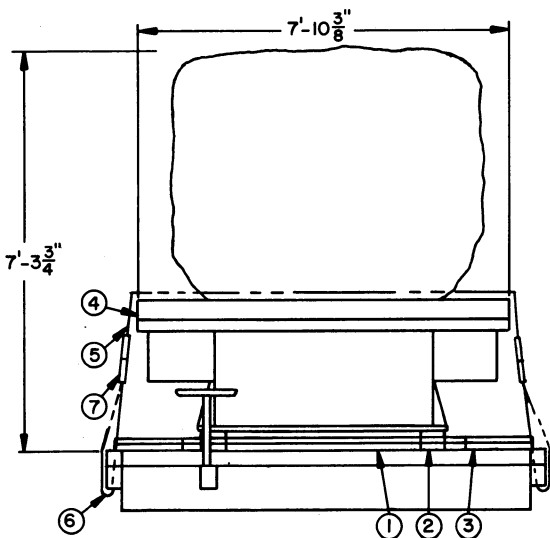
SEE GENERAL NOTE "E" ON PAGE 2 (PREFACE RULE PERTAINING TO SECUREMENT OF PROTECTIVE COVERING).



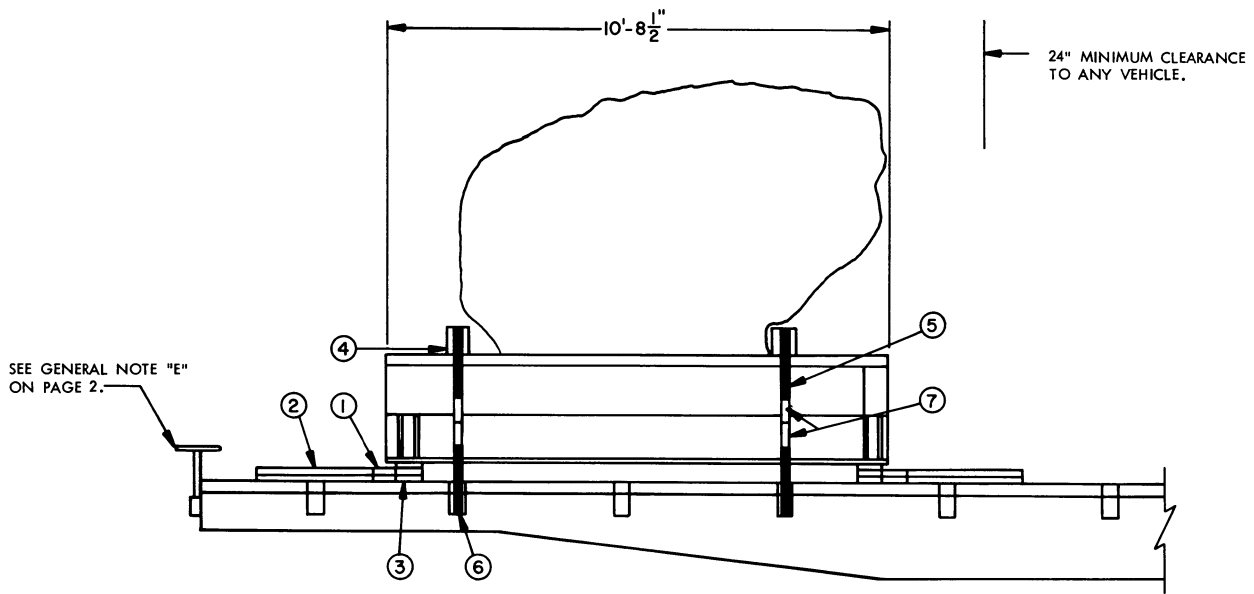
ISOMETRIC VIEW

KEY NUMBERS

- ① HEADER, 2" X 6" X 72" (DOUBLED) (2 REQD). POSITION AGAINST ALUMINUM BLOCKS. NAIL THE FIRST PIECE TO THE CAR FLOOR W/9-30d NAILS. NAIL THE SECOND PIECE TO THE FIRST W/9-60d NAILS. SEE SPECIAL NOTE 5 ON PAGE 9, AND GENERAL NOTE "L" ON PAGE 2.
- ② BACK-UP CLEAT, 2" X 6" X 30" (DOUBLED) (4 REQD). POSITION IN LINE WITH ALUMINUM BLOCKS AND NAIL THE FIRST PIECE TO THE CAR FLOOR W/5-30d NAILS. NAIL THE SECOND PIECE TO THE FIRST W/5-60d NAILS. SEE SPECIAL NOTE 5 ON PAGE 9.
- ③ SIDE BLOCKING, 2" X 6" X 22" (DOUBLED) (4 REQD). POSITION AGAINST ALUMINUM BLOCK AND NAIL THE FIRST PIECE TO THE CAR FLOOR W/4-30d NAILS. NAIL THE SECOND PIECE TO THE FIRST IN A LIKE MANNER.
- ④ STRAPPING BOARD, 6" X 6" X 8'-0" (2 REQD).
- ⑤ STEEL STRAPPING, 2" X .050" X 32'-0" (2 REQD). STAPLE TO PIECE MARKED ④ W/4 STAPLES. SEE SPECIAL NOTE 2 AND 4 ON PAGE 9.
- ⑥ PAD, 2" X .050" STRAP 24" LONG (4 REQD). POSITION UNDER AND SEAL TO PIECE MARKED ⑤. SEE "DETAIL A" ON PAGE 2. ALT: STAKE POCKET PROTECTORS, SIGNODE NO. 1 (OR EQUAL) (8 REQD). TWO (2) USED UNDER EACH STAKE POCKET WITH PIECE MARKED ⑤. SEE "DETAIL B" ON PAGE 2.
- ⑦ SEAL FOR 2" STRAPPING (12 REQD, 6 PER STRAP). EXCEPT FOR THE SEALS USED TO SECURE THE PADS, DOUBLE CRIMP EACH SEAL. SEE GENERAL NOTE "H" ON PAGE 2.



END VIEW



ELEVATION VIEW

SPECIAL NOTES :

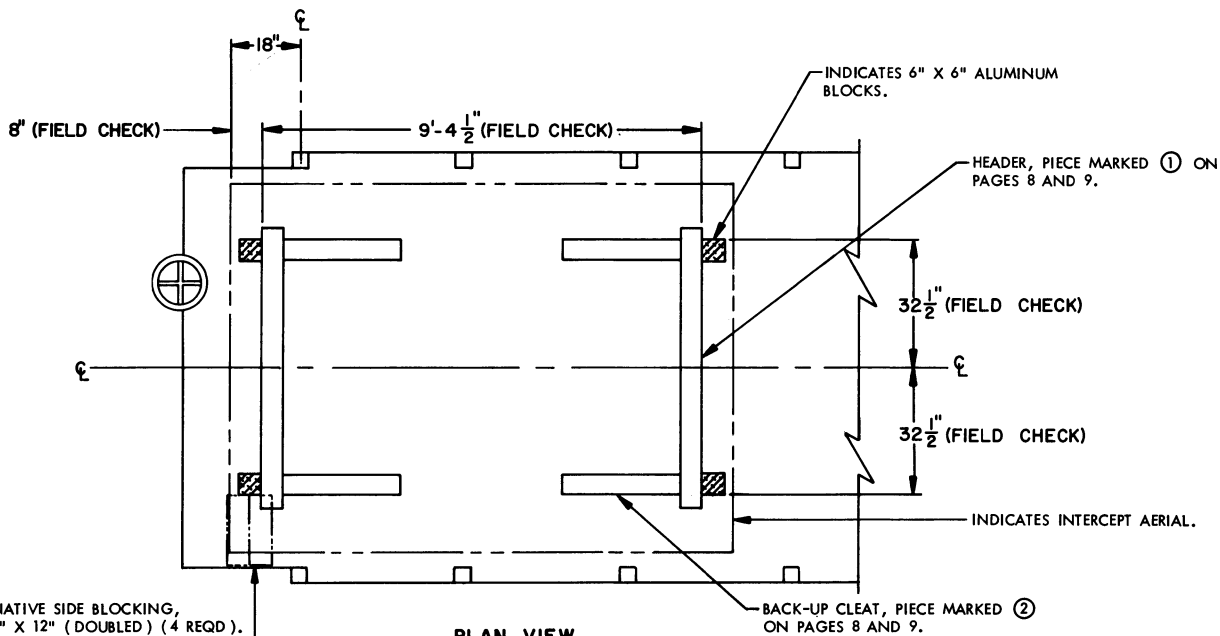
1. A ONE (1) UNIT LOAD IS SHOWN ON A 9'-2" WIDE (PLATFORM) FLAT CAR WITH STAKE POCKETS SPACED 42" ON CENTER. A WIDER FLAT CAR MAY BE USED.
2. 1/2" CABLE (OR LARGER) MAY BE USED IN LIEU OF 2" STRAPPING SHOWN AS PIECE MARKED (2). SEE GENERAL NOTES "D", "E", AND "F" ON PAGE 2. SEE "ALTERNATIVE HOLD-DOWN" DETAIL ON PAGE 3.
3. IF THE FLAT CAR BEING LOADED HAS EXPOSED BOLSTERS, SEE "END BLOCKING FOR CARS WITH EXPOSED STEEL BOLSTERS" DETAIL ON PAGE 3, FOR SPECIAL GUIDANCE WHICH MAY PERMIT USE OF SOME CARS THAT HAVE EXPOSED STEEL COMPONENTS.
4. ITEM MUST BE LOCATED ON CAR RELATIVE TO LOCATION OF STAKE POCKETS SO THAT WHEN PIECES MARKED (4) THROUGH (7) ARE APPLIED THEY WILL BE IN THE SAME GENERAL LOCATION RELATIVE TO THE ITEM AS SHOWN.
5. THIS ITEM MAY BE BLOCKED BY THE USE OF PRE-POSITIONED HEADERS AND BACK-UP CLEATS AS SHOWN IN THE "PLAN VIEW" ON PAGE 10.

BILL OF MATERIAL		
LUMBER	LINEAR FEET	BOARD FEET
2" X 6"	59	59
6" X 6"	16	48
NAILS	NO REQD	POUNDS
30d (4-1/2")	70	3-1/2
60d (6")	38	4
STRAPPING, 2" X .050" -----	72' REQD -----	24 LBS
SEAL FOR 2" STRAPPING -----	12 REQD -----	3 LBS
STAPLE FOR 2" STRAPPING -----	8 REQD -----	NIL

LOAD AS SHOWN

ITEM	QUANTITY	WEIGHT (APPROX)
INTERCEPT AERIAL ON ALUMINUM BLOCKS	1	9,720 LBS
DUNNAGE		249 LBS
TOTAL WEIGHT		9,969 LBS

UNCRATED-MOUNTED ON ALUMINUM BLOCKS



PLAN VIEW

THE VIEW ABOVE DEPICTS THE USE OF PRE-POSITIONED DUNNAGE FOR THE LOAD SHOWN ON PAGES 8 AND 9.

ALTERNATIVE SIDE BLOCKING, 2" X 6" X 12" (DOUBLED) (4 REQD). NAIL THE FIRST PIECE TO THE CAR FLOOR W/2-30d NAILS. NAIL THE SECOND PIECE TO THE FIRST IN A LIKE MANNER. SEE SPECIAL NOTE 2 ON THIS PAGE.

SPECIAL NOTES:

1. A ONE (1) UNIT LOAD, DEPICTING THE USE OF PRE-POSITIONED HEADERS AND BACK-UP CLEATS, IS SHOWN ON A 9'-2" WIDE (PLATFORM) FLAT CAR WITH STAKE POCKETS SPACED 42" ON CENTER. A WIDER CAR MAY BE USED.
2. WHEN LOADING THE ITEM AS CLOSE TO THE END OF THE CAR AS SHOWN ABOVE, THE SIDE BLOCKING POSITIONED NEAR THE END OF THE CAR MAY BE SHORTENED TO 2" X 6" X 12" (DOUBLED) (4 REQD). SEE "PLAN VIEW" ABOVE. IT WILL ALSO BE NECESSARY TO SHORTEN THE HEADER AT THIS LOCATION TO PROVIDE ROOM FOR THE SIDE BLOCKING. ALL OTHER SIDE BLOCKING WILL BE THE SAME AS PIECE MARKED (3) ON PAGES 8 AND 9.
3. SEE PIECES MARKED (4) THROUGH (7) ON PAGES 8 AND 9 FOR ITEM HOLD-DOWN PROCEDURES.