

LOADING AND BRACING (TL & LTL) ON FLATBED TRAILERS* OF CBU-58 AND CBU-71 DISPENSERS PACKED IN CNU-180/E AND CNU-180B/E CONTAINERS

INDEX

<u>ITEM</u>	<u>PAGE(S)</u>
GENERAL NOTES AND MATERIAL SPECIFICATIONS - - - - -	2
CONTAINER DETAIL - - - - -	3
20-CONTAINER LOAD ON A 40'-0" LONG BY 8'-0" WIDE FLATBED TRAILER - - - -	4, 5
20-CONTAINER LOAD ON A 48'-0" LONG BY 8'-0" WIDE FLATBED TRAILER - - - -	6, 7
TYPICAL LTL (2- CONTAINER LOAD) - - - - -	8
DETAILS - - - - -	9
20-CONTAINER LOAD ON A 40'-0" LONG BY 8'-0" WIDE FLATBED TRAILER (CHAIN TIEDOWN METHOD) - - - - -	10, 11
20-CONTAINER LOAD ON A 48'-0" LONG BY 8'-0" WIDE FLATBED TRAILER (WEB STRAP TIEDOWN METHOD) - - - - -	12, 13
PROVISIONS FOR THE USE OF FIRE HOSE - - - - -	14

* CAUTION: THE OUTLOADING PROCEDURES SHOWN HEREIN ARE ONLY APPLICABLE TO HIGHWAY MOVEMENTS; NOT TRAILER-ON-FLAT CAR MOVEMENTS.

U.S. ARMY MATERIEL COMMAND DRAWING

APPROVED, U.S. ARMY INDUSTRIAL OPERATIONS COMMAND 	ENGINEER	BASIC		DO NOT SCALE				
		REV.	MICHAEL SARDONE		WEBSITE: HTTP://WWW.DAC.ARMY.MIL			
	TECHNICIAN	BASIC	PATTY BRIGHT		JULY 1993			
		REV.			REVISION NO. 1	JUNE 1997		
APPROVED BY ORDER OF COMMANDING GENERAL, U.S. ARMY MATERIEL COMMAND DEFENSE AMMUNITION CENTER	TRANSPORTATION ENGINEERING DIVISION				SEE THE REVISION LISTING ON PAGE 2			
	VALIDATION ENGINEERING DIVISION				CLASS	DIVISION	DRAWING	FILE
	LOGISTICS ENGINEERING OFFICE				19	48	7132	SP11J10

GENERAL NOTES

- A. THIS DOCUMENT HAS BEEN PREPARED AND ISSUED IN ACCORDANCE WITH AR 740-1, AND AUGMENTS TM 743-200-1 (CHAPTER 5).
- B. THE OUTLOADING PROCEDURES SPECIFIED IN THIS DRAWING ARE APPLICABLE TO CBU-58 AND CBU-71 DISPENSER PACKED IN CNU-180/E AND 180B/E CONTAINERS. SUBSEQUENT REFERENCE TO CONTAINER HEREIN MEANS THE CNU-180/E OR 180B/E CONTAINER WITH CONTENTS.
- C. FOR DETAIL OF THE CNU-180/E AND 180B/E CONTAINERS, SEE PAGE 3.
- CNU-180/E CONTAINER:
DIMENSIONS -- 7'-7" LONG X 36-3/4" WIDE X 26-3/4" HIGH.
GROSS WEIGHT W/CBU-58 MUNITIONS -- 2,084 POUNDS (APPROX).
GROSS WEIGHT W/CBU-71 MUNITIONS -- 2,064 POUNDS (APPROX).
- CNU-180B/E CONTAINER:
DIMENSIONS -- 7'-6-1/2" LONG X 36-1/2" WIDE X 25-1/2" HIGH.
GROSS WEIGHT W/CBU-58 MUNITIONS -- 2,084 POUNDS (APPROX).
GROSS WEIGHT W/CBU-71 MUNITIONS -- 2,064 POUNDS (APPROX).
- D. THE LOADS AS SHOWN HEREIN ARE BASED ON 40'-0" LONG BY 8'-0" WIDE, AND 48'-0" LONG BY 8'-0" WIDE, FLATBED TRAILERS. TRAILERS OF OTHER LENGTHS AND WIDTHS MAY BE USED. TRAILERS MUST HAVE WOOD OR WOOD AND METAL FLOORS. TRAILERS HAVING ALL-METAL FLOORS CANNOT BE USED. CAUTION: IF THE TRAILER FLOOR IS EQUIPPED WITH EXPOSED METAL DECKING ABOVE THE BOGIE ASSEMBLY, OR ELSEWHERE, FIELD MEASUREMENTS SHOULD BE MADE TO ENSURE THAT THE METAL DECKING DOES NOT INTERFERE WITH THE PROPER POSITIONING AND NAILING OF THE DUNNAGE AS SPECIFIED BY THE PROCEDURES SHOWN HEREIN.
- E. SELECTION OF A VEHICLE USED TO TRANSPORT THE DESIGNATED ITEM MUST COMPLY WITH AR 55-355, CHAPTER 29, FOR EXPLOSIVES AND OTHER DANGEROUS ARTICLES, IN FULL.
- F. GROSS WEIGHT AND AXLE DISTRIBUTION OF WEIGHT FOR A LOAD WILL BE THE RESPONSIBILITY OF THE CARRIER. THE CARRIER WILL ADVISE THE SHIPPER OF APPLICABLE LOADING REQUIREMENTS, AND THE SHIPPER WILL LOAD ACCORDINGLY.
- G. NOTICE: A SHIPMENT WILL BE POSITIONED ON A TRAILER CONSISTENT WITH STATE WEIGHT LAWS.
- H. OTHER TYPES OF LADING ITEMS MAY BE LOADED ON A TRAILER WHICH IS PARTIALLY LOADED WITH THE DESIGNATED ITEM, PROVIDING THE TOTAL LOAD IS COMPATIBLE, EXISTING DIRECTIVES ARE NOT VIOLATED, AND THE OTHER LADING ITEMS ARE BLOCKED AND BRACED TO EQUAL THE BLOCKING AND BRACING CRITERIA SPECIFIED HEREIN.

(CONTINUED AT RIGHT)

MATERIAL SPECIFICATIONS

- LUMBER -----: SEE TM 743-200-1 (DUNNAGE LUMBER) AND FED SPEC MM-L-751.
- NAILS -----: FED SPEC FF-N-105; COMMON.
- STRAP, WEB -----: WEB SLING AND TIEDOWN ASSOCIATION RECOMMENDED STANDARD SPECIFICATION FOR SYNTHETIC WEB TIEDOWNS, FIRST PUBLISHED IN 1991.
- STRAPPING, STEEL ----: ASTM D3953; FLAT STRAPPING, TYPE 1, HEAVY DUTY, FINISH A, B (GRADE 2), OR C.
- SEAL, STRAP -----: ASTM D3953; CLASS H, FINISH A, B (GRADE 2), OR C, DOUBLE NOTCH TYPE, STYLE I, II, OR IV.
- STAPLE, STRAP -----: COMMERCIAL GRADE.
- STAKE
POCKET PROTECTOR -: COMMERCIAL GRADE.
- ANTI-CHAFING
MATERIAL -----: MIL-B-121 (OR EQUAL); NEUTRAL BARRIER MATERIAL.
- CHAIN -----: NATIONAL ASSOCIATION OF CHAIN MANUFACTURER'S WELDED CHAIN SPECIFICATION ADOPTED NOVEMBER 1975.
- LOAD BINDER -----: FED SPEC GGG-B-325.

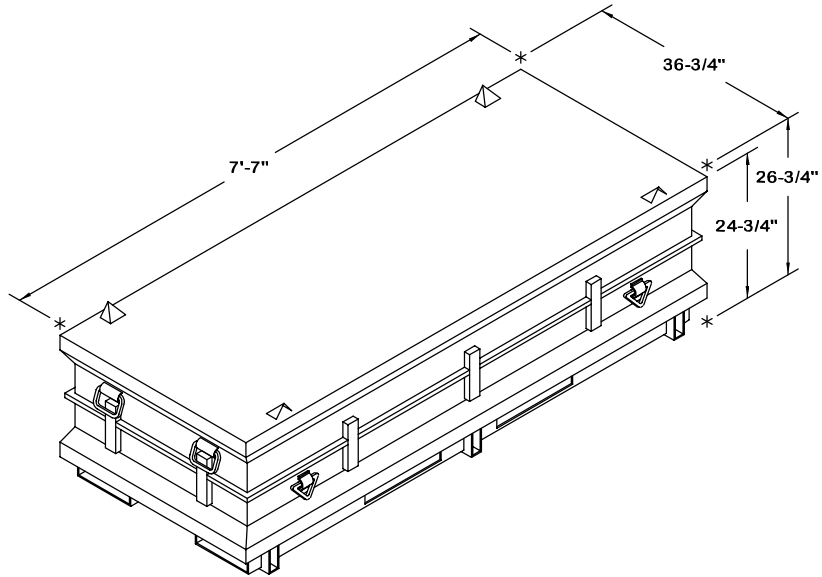
(GENERAL NOTES CONTINUED)

- J. CAUTION: REGARDLESS OF THE TYPE OF TRAILER INVOLVED, ONLY THOSE TRAILERS HAVING TIEDOWN ANCHORING FACILITIES WHICH PROVIDE HOLDING STRENGTH EQUAL TO OR GREATER THAN THE STRENGTH OF THE HOLD-DOWN STRAPS OR CHAINS AND WHICH ALIGN NEAR THE INDICATED LOCATIONS FOR THE HOLD-DOWN STRAPS OR CHAINS SHOULD BE USED. IF THE TRAILER ANCHOR DEVICES ARE NOT PROPERLY POSITIONED TO RECEIVE STRAPPING OR CHAINS, AS SHOWN, OR IF THE ANCHOR DEVICES ARE NOT EQUAL TO OR GREATER THAN THE STRENGTH OF THE TIEDOWN STRAPS OR CHAINS, STEEL STRAPS MAY BE APPLIED TO FORM A COMPLETE LOOP WHICH ENCOMPASSES BOTH THE LADING AND THE TRAILER FRAME AND/OR BED. CAUTION: AVOID TRAILER WHEELS, FIFTH WHEEL PLATE CONTROLS AND OTHER APPURTENANCES. USE EDGE PROTECTORS OR PADS ON ALL SHARP EDGES. NEITHER CHAINS NOR WEB STRAPS WILL BE APPLIED TO FORM A COMPLETE LOOP WHICH ENCOMPASSES BOTH THE LADING AND THE TRAILER FRAME AND/OR BED.
- K. DUNNAGE LUMBER SPECIFIED IS OF NOMINAL SIZE. FOR EXAMPLE, 1" X 4" MATERIAL IS ACTUALLY 3/4" THICK BY 3-1/2" WIDE AND 2" X 6" MATERIAL IS ACTUALLY 1-1/2" THICK BY 5-1/2" WIDE.
- L. A STAGGERED NAILING PATTERN WILL BE USED WHEREVER POSSIBLE WHEN NAILS ARE DRIVEN INTO JOINTS OF DUNNAGE ASSEMBLIES. ALSO, A STAGGERED NAILING PATTERN WILL BE USED WHEN DUNNAGE IS NAILED TO THE FLOOR OF THE TRANSPORTING VEHICLE, OR WHEN LAMINATING DUNNAGE. THE NAILING PATTERN WILL BE ADJUSTED AS REQUIRED SO THAT A NAIL DOES NOT PENETRATE INTO OR NEAR A CRACK BETWEEN FLOOR BOARDS. ADDITIONALLY, THE NAILING PATTERN FOR AN UPPER PIECE OF LAMINATED DUNNAGE WILL BE ADJUSTED AS REQUIRED SO THAT A NAIL FOR THAT PIECE WILL NOT BE DRIVEN THROUGH THE PIECE ONTO OR RIGHT BESIDE A NAIL IN A LOWER PIECE.
- M. WHEN STEEL STRAPPING IS SEALED AT AN END-OVER-END LAP JOINT, A MINIMUM OF ONE SEAL WITH TWO PAIR OF NOTCHES WILL BE USED TO SEAL THE JOINT WHEN A NOTCH-TYPE SEALER IS BEING USED. A MINIMUM OF TWO SEALS, BUTTED TOGETHER WITH TWO PAIR OF CRIMPS PER SEAL WILL BE USED TO SEAL THE JOINT WHEN A CRIMP-TYPE SEALER IS BEING USED. REFER TO THE "STRAP JOINT A" AND "STRAP JOINT B" DETAILS ON PAGE 9 FOR GUIDANCE.
- N. FOR ADDITIONAL GUIDANCE, ATTENTION IS DIRECTED TO THE "SPECIAL NOTES" SECTION WHICH IS IMMEDIATELY ADJACENT TO A DEPICTED OUTLOADING METHOD.
- O. CONVERSION TO METRIC EQUIVALENTS: DIMENSIONS WITHIN THIS DOCUMENT ARE EXPRESSED IN INCHES, AND WEIGHTS ARE EXPRESSED IN POUNDS. WHEN NECESSARY, THE METRIC EQUIVALENTS MAY BE COMPUTED ON THE BASIS OF ONE INCH EQUALS 25.4MM, AND ONE POUND EQUALS 0.454 KG.
- P. IF CHAINS AND LOAD BINDERS ARE BEING USED IN LIEU OF STEEL STRAPPING, THE "SPECIAL PROVISIONS FOR CHAIN TIEDOWN" ON PAGE 11 MUST BE APPLIED TO ENSURE ADEQUATE SECUREMENT OF THE LOAD PRIOR TO SHIPMENT. ALSO SEE THE SPECIAL NOTES ON PAGE 11.
- Q. THE TRANSPORTING VEHICLE OPERATOR SHOULD BE INSTRUCTED TO PERIODICALLY INSPECT THE TIEDOWN CHAINS AND LOAD BINDERS DURING TRANSIT AND TIGHTEN IF NECESSARY.
- R. IF WEB STRAPS ARE BEING USED IN LIEU OF STEEL STRAPPING, THE "SPECIAL PROVISIONS FOR WEB STRAP TIEDOWN" ON PAGE 13 MUST BE APPLIED TO ENSURE ADEQUATE SECUREMENT OF THE LOAD PRIOR TO SHIPMENT. ALSO SEE THE SPECIAL NOTES ON PAGE 13.

REVISION

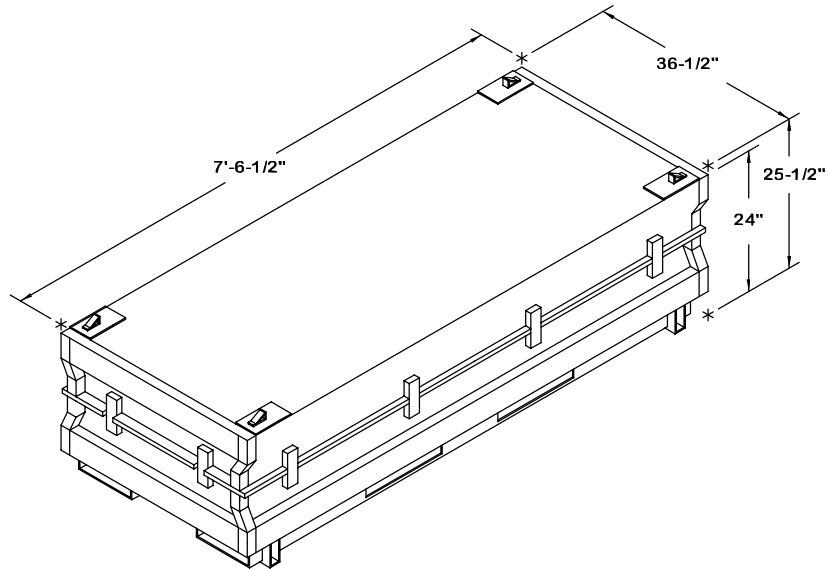
REVISION NO. 1, DATED JUNE 1997, CONSISTS OF:

1. REMOVING BACK-UP CLEATS FROM LOAD DRAWINGS.
2. ADDING WEB STRAP TIEDOWN METHOD.
3. DECREASING LENGTH OF SIDE BLOCKING.
4. ADDING PROVISIONS FOR THE USE OF FIRE HOSE.
5. UPDATING DRAWING FORMAT.



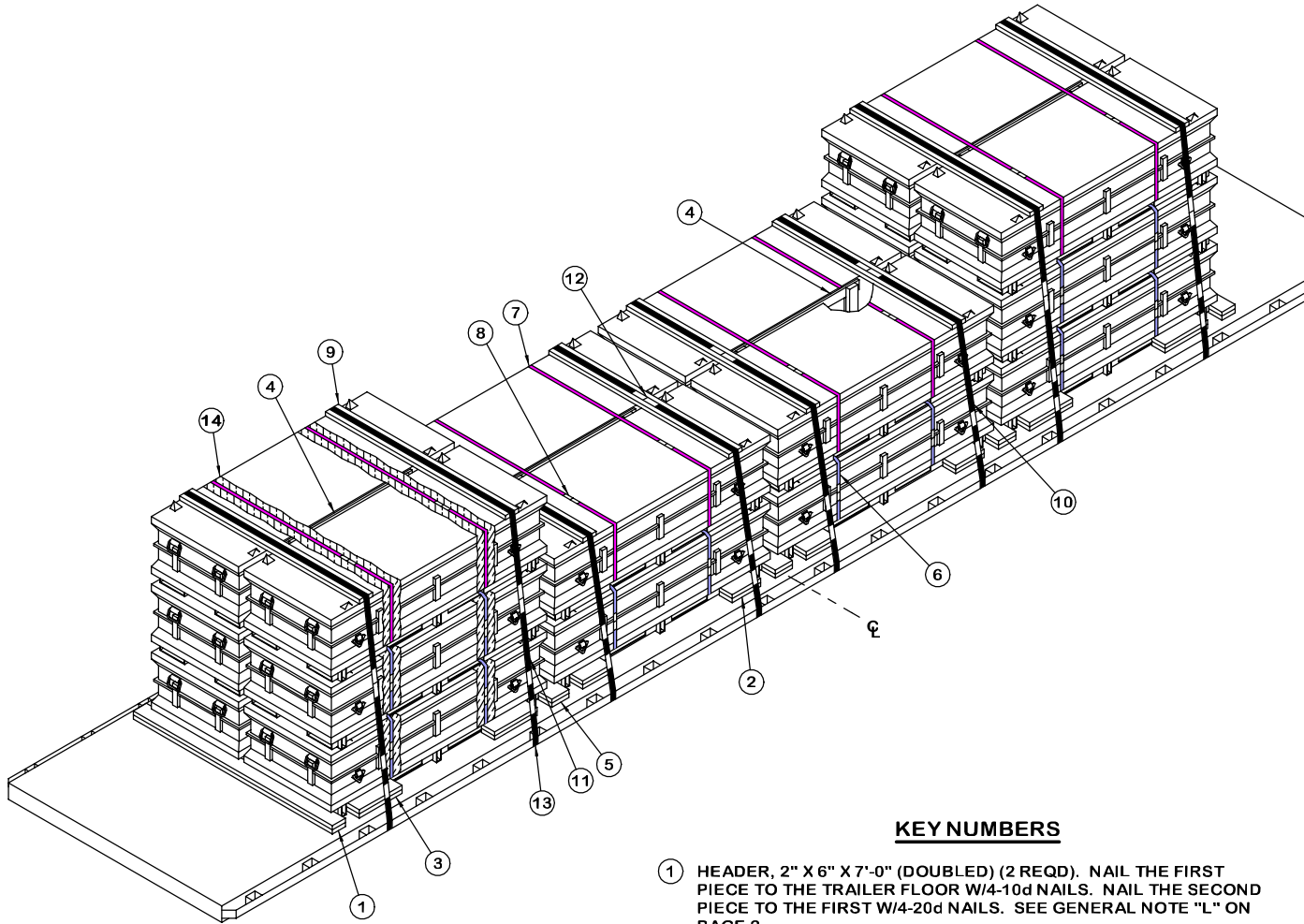
CNU-180/E CONTAINER

CONTAINER WEIGHT
 FOR CBU-58 ----- 2,084 LBS (APPROX)
 FOR CBU-71 ----- 2,064 LBS (APPROX)
 CONTAINER CUBE ----- 47.9 CU. FT. (APPROX)



CNU-180B/E CONTAINER

CONTAINER WEIGHT
 FOR CBU-58 ----- 2,084 LBS (APPROX)
 FOR CBU-71 ----- 2,064 LBS (APPROX)
 CONTAINER CUBE ----- 45.9 CU. FT. (APPROX)



ISOMETRIC VIEW

KEY NUMBERS

- ① HEADER, 2" X 6" X 7'-0" (DOUBLED) (2 REQD). NAIL THE FIRST PIECE TO THE TRAILER FLOOR W/4-10d NAILS. NAIL THE SECOND PIECE TO THE FIRST W/4-20d NAILS. SEE GENERAL NOTE "L" ON PAGE 2.
- ② SIDE BLOCKING, 2" X 6" X 12" (DOUBLED) (8 REQD). NAIL THE FIRST PIECE TO THE TRAILER FLOOR W/4-10d NAILS. NAIL THE SECOND PIECE TO THE FIRST IN A LIKE MANNER.
- ③ SIDE BLOCKING, 2" X 6" X 18" (DOUBLED) (8 REQD). NAIL THE FIRST PIECE TO THE TRAILER FLOOR W/5-10d NAILS. NAIL THE SECOND PIECE TO THE FIRST IN A LIKE MANNER.
- ④ ANTI-CHAFING ASSEMBLY (4 REQD, 2 FOR 2-LAYER, 2 FOR 3-LAYER). SEE THE DETAIL ON PAGE 9.
- ⑤ HEADER, 2" X 8" X 7'-0" (DOUBLED) (3 REQD). NAIL THE FIRST PIECE TO THE TRAILER FLOOR W/4-10d NAILS. NAIL THE SECOND PIECE TO THE FIRST W/4-20d NAILS.
- ⑥ STACK UNITIZING STRAP, 1-1/4" X .035" OR .031" X 11'-0" LONG STEEL STRAPPING (24 REQD, 2 PER 2-HIGH, 4 PER 3-HIGH STACK). INSTALL THROUGH FORK TINE OPENINGS OF A FIRST LAYER AND A SECOND LAYER CONTAINER, AND A SECOND AND THIRD LAYER CONTAINER AS APPLICABLE. STRAPS SHOULD BE POSITIONED AS FAR APART AS THE FORK TINE OPENINGS PERMIT. SEE SPECIAL NOTE 2 ON PAGE 5.
- ⑦ BUNDLING STRAP, 1-1/4" X .035" OR .031" X 17'-6" LONG STEEL STRAPPING (8 REQD). INSTALL TO ENCIRCLE, THROUGH FORK TINE OPENINGS, THE TWO LATERALLY ADJACENT CONTAINERS IN THE TOP LAYER, AS SHOWN. STRAPS SHOULD BE POSITIONED AS FAR APART AS THE FORK TINE OPENINGS PERMIT.
- ⑧ SEAL FOR 1-1/4" STEEL STRAPPING (64 REQD, 2 PER STRAP). CRIMP EACH SEAL WITH TWO PAIR OF CRIMPS. SEE GENERAL NOTE "M" ON PAGE 2 AND THE "END-OVER-END LAP JOINT DETAILS" ON PAGE 9.
- ⑨ STRAPPING BOARD, 2" X 6" X 6'-4" (8 REQD).

(KEY NUMBERS CONTINUED)

- ⑩ HOLD-DOWN STRAP, 2" X .050" OR .044" X 24'-0" LONG STEEL STRAPPING (4 REQD). INSTALL EACH STRAP FROM TWO 12'-0" LONG PIECES. STAPLE TO STRAPPING BOARD, PIECE MARKED ⑨, W/2 STAPLES. SEE GENERAL NOTE "M" ON PAGE 2.
- ⑪ HOLD-DOWN STRAP, 2" X .050" OR .044" X 27'-6" LONG STEEL STRAPPING (4 REQD). INSTALL EACH STRAP FROM TWO PIECES, ONE 7'-0" LONG AND ONE 20'-6" LONG.
- ⑫ SEAL FOR 2" STEEL STRAPPING (48 REQD, 6 PER STRAP). CRIMP EACH SEAL WITH TWO PAIR OF CRIMPS, EXCEPT THOSE USED TO SECURE THE PADS, PIECES MARKED ⑬. SEE THE "HOLD-DOWN STRAP ANCHORING DETAILS" AND THE "END-OVER-END LAP JOINT DETAILS" ON PAGE 9.
- ⑬ PAD, 2" X .050" OR .044" X 18" LONG STEEL STRAPPING (16 REQD). POSITION UNDER ANCHORING FACILITY AND SEAL TO HOLD-DOWN STRAPS, PIECES MARKED ⑩ AND ⑪. ALT: STAKE POCKET PROTECTOR (32 REQD). USE TWO UNDER EACH ANCHORING FACILITY WITH A HOLD-DOWN STRAP. SEE THE "HOLD-DOWN STRAP ANCHORING DETAILS" ON PAGE 9.
- ⑭ ANTI-CHAFING NEUTRAL BARRIER MATERIAL (AS REQD). POSITION UNDER ALL STRAPS AT POINTS OF CONTACT WITH THE CONTAINER, EXCEPT THRU FORK TINE OPENINGS.

SPECIAL NOTES:

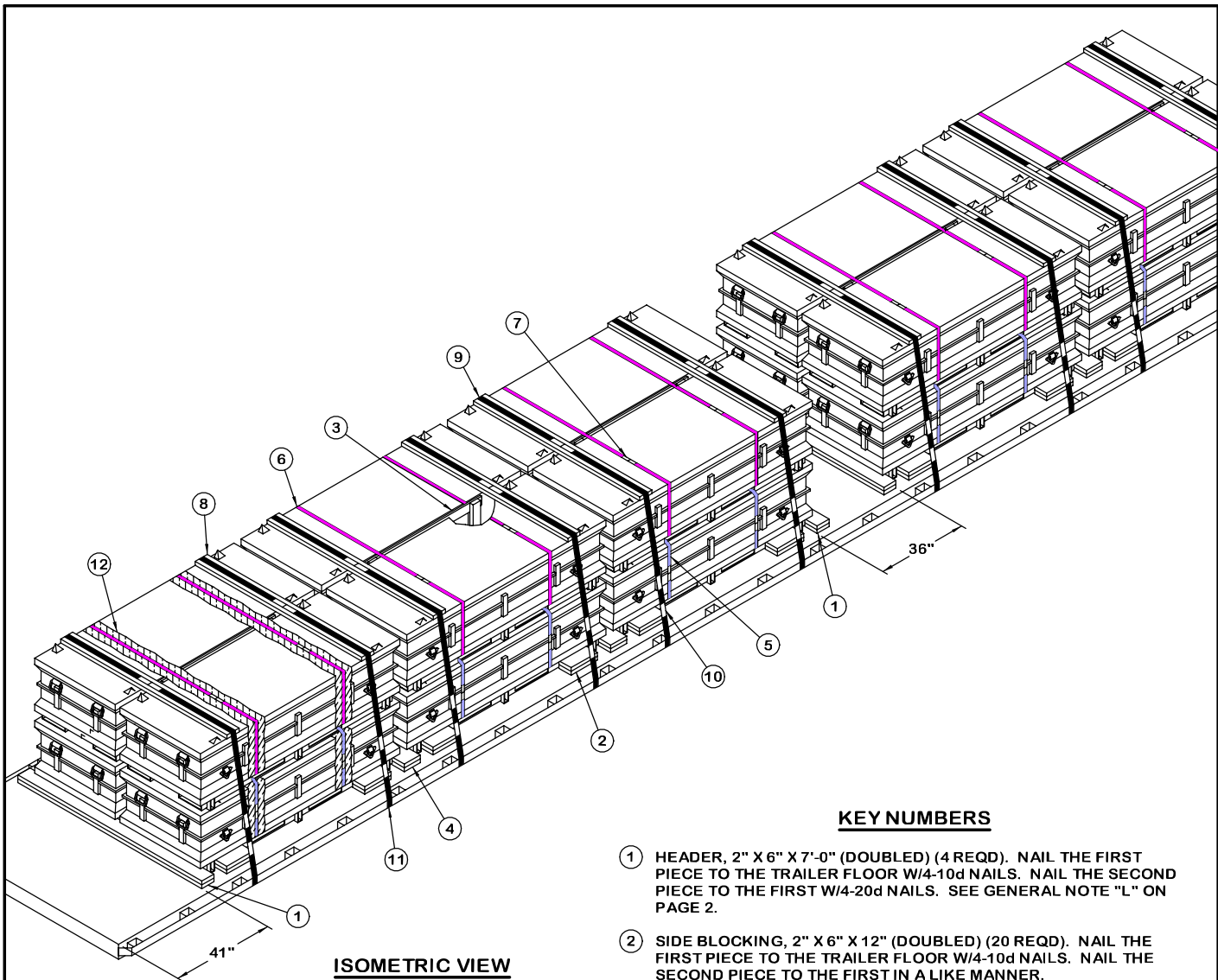
1. A 20-CONTAINER LOAD IS SHOWN ON A 40'-0" LONG BY 8'-0" WIDE FLATBED TRAILER.
2. IF DESIRED, AND IF THE CAPACITY OF THE FORKLIFT TRUCK PERMITS, TWO CONTAINERS MAY BE STACKED AND UNITIZED WITH TWO STEEL STRAPS, AS SPECIFIED, PRIOR TO PLACEMENT ON THE TRAILER.
3. THE DEPICTED PROCEDURES ALSO APPLY TO A SHIPMENT OF CBU-71 MUNITIONS IN THE CNU-180/E OR CNU-180B/E CONTAINERS.

BILL OF MATERIAL		
LUMBER	LINEAR FEET	BOARD FEET
1" X 4"	70	24
2" X 4"	41	28
2" X 6"	119	119
2" X 8"	42	56
NAILS	NO. REQD	POUNDS
6d (2")	96	3/4
10d (3")	164	2-3/4
20d (4")	20	3/4
1-1/4" STEEL STRAPPING ---- 404' REQD ----- 57-3/4 LBS		
2" STEEL STRAPPING ----- 230' REQD ----- 76-3/4 LBS		
SEAL FOR 1-1/4" STRAPPING ---- 64 REQD ----- 3 LBS		
SEAL FOR 2" STRAPPING ----- 48 REQD ----- 9-3/4 LBS		
STAPLE FOR 2" STRAPPING ---- 16 REQD ----- NIL		
ANTI-CHAFING MATERIAL ----- AS REQD ----- NIL		

LOAD AS SHOWN

ITEM	QUANTITY	WEIGHT (APPROX)
CONTAINER (W/CBU-58)	20	41,680 LBS
DUNNAGE		606 LBS

TOTAL WEIGHT ----- 42,286 LBS (APPROX)



ISOMETRIC VIEW

KEY NUMBERS

- ① HEADER, 2" X 6" X 7'-0" (DOUBLED) (4 REQD). NAIL THE FIRST PIECE TO THE TRAILER FLOOR W/4-10d NAILS. NAIL THE SECOND PIECE TO THE FIRST W/4-20d NAILS. SEE GENERAL NOTE "L" ON PAGE 2.
- ② SIDE BLOCKING, 2" X 6" X 12" (DOUBLED) (20 REQD). NAIL THE FIRST PIECE TO THE TRAILER FLOOR W/4-10d NAILS. NAIL THE SECOND PIECE TO THE FIRST IN A LIKE MANNER.
- ③ ANTI-CHAFING ASSEMBLY (5 REQD). SEE THE DETAIL ON PAGE 9.
- ④ HEADER, 2" X 8" X 7'-0" (DOUBLED) (3 REQD). NAIL THE FIRST PIECE TO THE TRAILER FLOOR W/4-10d NAILS. NAIL THE SECOND PIECE TO THE FIRST W/4-20d NAILS.
- ⑤ STACK UNITIZING STRAP, 1-1/4" X .035" OR .031" X 11'-0" LONG STEEL STRAPPING (20 REQD). INSTALL THROUGH FORK TINE OPENINGS OF A FIRST LAYER AND A SECOND LAYER CONTAINER. STRAPS SHOULD BE POSITIONED AS FAR APART AS THE FORK TINE OPENINGS PERMIT. SEE SPECIAL NOTE 2 ON PAGE 7.
- ⑥ BUNDLING STRAP, 1-1/4" X .035" OR .031" X 17'-6" LONG STEEL STRAPPING (10 REQD). INSTALL TO ENCIRCLE, THROUGH FORK TINE OPENINGS, THE TWO LATERALLY ADJACENT CONTAINERS IN THE TOP LAYER, AS SHOWN. STRAPS SHOULD BE POSITIONED AS FAR APART AS THE FORK TINE OPENINGS PERMIT.
- ⑦ SEAL FOR 1-1/4" STEEL STRAPPING (60 REQD, 2 PER STRAP). CRIMP EACH SEAL WITH TWO PAIR OF CRIMPS. SEE GENERAL NOTE "M" ON PAGE 2 AND THE "END-OVER-END LAP JOINT DETAILS" ON PAGE 9.
- ⑧ STRAPPING BOARD, 2" X 6" X 6'-4" (10 REQD).
- ⑨ HOLD-DOWN STRAP, 2" X .050" OR .044" X 24'-0" LONG STEEL STRAPPING (10 REQD). INSTALL EACH STRAP FROM TWO 12'-0" LONG PIECES. STAPLE TO STRAPPING BOARD, PIECE MARKED ⑧, W/2 STAPLES. SEE GENERAL NOTE "M" ON PAGE 2.

(KEY NUMBERS CONTINUED)

- ⑩ SEAL FOR 2" STEEL STRAPPING (60 REQD, 6 PER STRAP). CRIMP EACH SEAL WITH TWO PAIR OF CRIMPS, EXCEPT THOSE USED TO SECURE THE PADS, PIECES MARKED ⑪. SEE THE "HOLD-DOWN STRAP ANCHORING DETAILS" AND THE "END-OVER-END LAP JOINT DETAILS" ON PAGE 9.
- ⑪ PAD, 2" X .050" OR .044" X 18" LONG STEEL STRAPPING (20 REQD). POSITION UNDER ANCHORING FACILITY AND SEAL TO HOLD-DOWN STRAPS, PIECES MARKED ⑨. ALT: STAKE POCKET PROTECTOR (32 REQD). USE TWO UNDER EACH ANCHORING FACILITY WITH A HOLD-DOWN STRAP. SEE THE "HOLD-DOWN STRAP ANCHORING DETAILS" ON PAGE 9.
- ⑫ ANTI-CHAFING NEUTRAL BARRIER MATERIAL (AS REQD). POSITION UNDER ALL STRAPS AT POINTS OF CONTACT WITH THE CONTAINER, EXCEPT THRU FORK TINE OPENINGS.

SPECIAL NOTES:

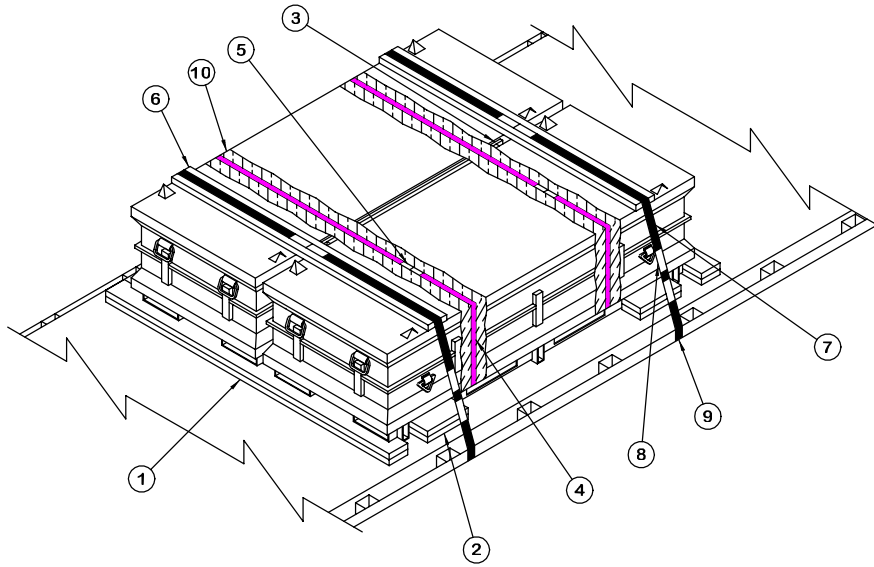
1. A 20-CONTAINER LOAD IS SHOWN ON A 48'-0" LONG BY 8'-0" WIDE FLATBED TRAILER.
2. IF DESIRED, AND IF THE CAPACITY OF THE FORKLIFT TRUCK PERMITS, TWO CONTAINERS MAY BE STACKED AND UNITIZED WITH TWO STEEL STRAPS, AS SPECIFIED, PRIOR TO PLACEMENT ON THE TRAILER.
3. THE DEPICTED PROCEDURES ALSO APPLY TO A SHIPMENT OF CBU-71 MUNITIONS IN THE CNU-180/E OR CNU-180B/E CONTAINERS.

BILL OF MATERIAL		
LUMBER	LINEAR FEET	BOARD FEET
1" X 4"	77	26
2" X 4"	41	28
2" X 6"	160	160
2" X 8"	42	56
NAILS	NO. REQD	POUNDS
6d (2")	110	3/4
10d (3")	188	3
20d (4")	28	1
1-1/4" STEEL STRAPPING ---- 395' REQD ----- 56-1/2 LBS		
2" STEEL STRAPPING ----- 270' REQD ----- 90 LBS		
SEAL FOR 1-1/4" STRAPPING --- 60 REQD ----- 2-3/4 LBS		
SEAL FOR 2" STRAPPING ----- 60 REQD ----- 12 LBS		
STAPLE FOR 2" STRAPPING ---- 20 REQD ----- NIL		
ANTI-CHAFING MATERIAL ----- AS REQD ----- NIL		

LOAD AS SHOWN

ITEM	QUANTITY	WEIGHT (APPROX)
CONTAINER (W/CBU-58)	20	41,680 LBS
DUNNAGE		706 LBS

TOTAL WEIGHT ----- 42,386 LBS (APPROX)



ISOMETRIC VIEW

SPECIAL NOTES:

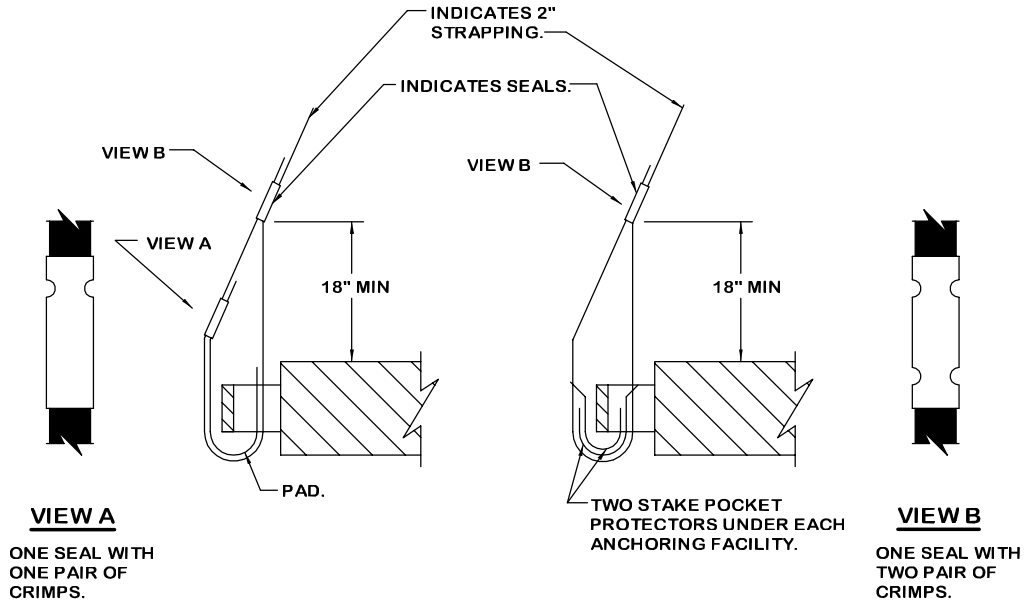
1. A 2-CONTAINER LOAD IS SHOWN, HOWEVER, THE PROCEDURES CAN ALSO BE USED FOR SHIPMENT OF A 1-CONTAINER LOAD AS FOLLOWS:

- A. OMIT PIECES MARKED ③, ④, ⑤, AND ⑩.
- B. USE PIECES MARKED ②, ⑧, AND ⑨ AS SPECIFIED.
- C. REDUCE THE LENGTH OF THE TWO HEADERS MARKED ① TO 45".
- D. REDUCE THE LENGTH OF THE TWO STRAPPING BOARDS, PIECES MARKED ⑥, TO 37".
- E. REDUCED THE LENGTH OF THE TWO HOLD-DOWN STRAPS, PIECES MARKED ⑦, TO 19'-0".

- 2. REFER TO "SPECIAL PROVISIONS FOR CHAIN TIEDOWN" ON PAGE 11 WHICH MAY BE USED IN LIEU OF HOLD-DOWN STRAPPING.
- 3. REFER TO "SPECIAL PROVISIONS FOR WEB STRAP TIEDOWN" ON PAGE 13 WHICH MAY BE USED IN LIEU OF HOLD-DOWN STRAPPING.

KEY NUMBERS

- ① HEADER, 2" X 6" X 7'-0" (DOUBLED) (2 REQD). NAIL THE FIRST PIECE TO THE TRAILER FLOOR W/3-10d NAILS. NAIL THE SECOND PIECE TO THE FIRST W/3-20d NAILS. SEE GENERAL NOTE "L" ON PAGE 2.
- ② SIDE BLOCKING, 2" X 6" X 12" (DOUBLED) (4 REQD). NAIL THE FIRST PIECE TO THE TRAILER FLOOR W/4-10d NAILS. NAIL THE SECOND PIECE TO THE FIRST IN A LIKE MANNER.
- ③ ANTI-CHAFING ASSEMBLY (1 REQD). SEE THE DETAIL ON PAGE 9.
- ④ BUNDLING STRAP, 1-1/4" X .035" OR .031" X 17'-6" LONG STEEL STRAPPING (2 REQD). INSTALL TO ENCIRCLE, THROUGH FORK TINE OPENINGS, THE TWO LATERALLY ADJACENT CONTAINERS AS SHOWN. STRAPS SHOULD BE POSITIONED AS FAR APART AS THE FORK TINE OPENINGS PERMIT.
- ⑤ SEAL FOR 1-1/4" STEEL STRAPPING (4 REQD, 2 PER STRAP). CRIMP EACH SEAL WITH TWO PAIR OF CRIMPS. SEE GENERAL NOTE "M" ON PAGE 2 AND THE "END-OVER-END LAP JOINT DETAILS" ON PAGE 9.
- ⑥ STRAPPING BOARD, 2" X 6" X 6'-4" (2 REQD).
- ⑦ HOLD-DOWN STRAP, 2" X .050" OR .044" X 24'-0" LONG STEEL STRAPPING (2 REQD). INSTALL EACH STRAP FROM TWO 12'-0" LONG PIECES. STAPLE TO STRAPPING BOARD, PIECE MARKED ⑥, W/2 STAPLES. SEE GENERAL NOTE "M" ON PAGE 2.
- ⑧ SEAL FOR 2" STEEL STRAPPING (12 REQD, 6 PER STRAP). CRIMP EACH SEAL WITH TWO PAIR OF CRIMPS, EXCEPT THOSE USED TO SECURE THE PADS, PIECES MARKED ⑨. SEE THE "HOLD-DOWN STRAP ANCHORING DETAILS" AND THE "END-OVER-END LAP JOINT DETAILS" ON PAGE 9.
- ⑨ PAD, 2" X .050" OR .044" X 18" LONG STEEL STRAPPING (4 REQD). POSITION UNDER ANCHORING FACILITY AND SEAL TO HOLD-DOWN STRAPS, PIECES MARKED ⑦. ALT: STAKE POCKET PROTECTOR (8 REQD). USE TWO UNDER EACH ANCHORING FACILITY WITH A HOLD-DOWN STRAP. SEE THE "HOLD-DOWN STRAP ANCHORING DETAILS" ON PAGE 9.
- ⑩ ANTI-CHAFING NEUTRAL BARRIER MATERIAL (AS REQD). POSITION UNDER ALL STRAPS AT POINTS OF CONTACT WITH THE CONTAINER, EXCEPT THRU FORK TINE OPENINGS.



VIEW A
ONE SEAL WITH ONE PAIR OF CRIMPS.

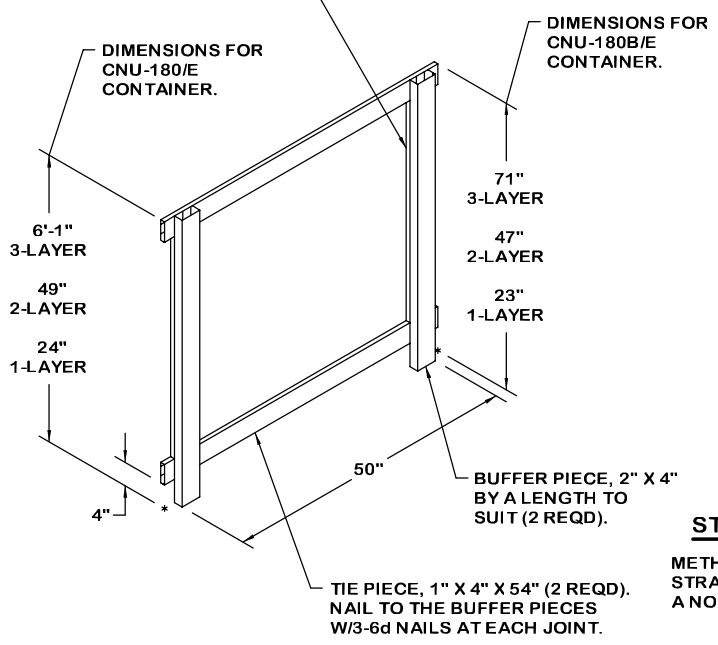
VIEW B
ONE SEAL WITH TWO PAIR OF CRIMPS.

DETAIL A
METHOD OF INSTALLING 2" STRAPPING AND PAD AT ANCHORING FACILITY.

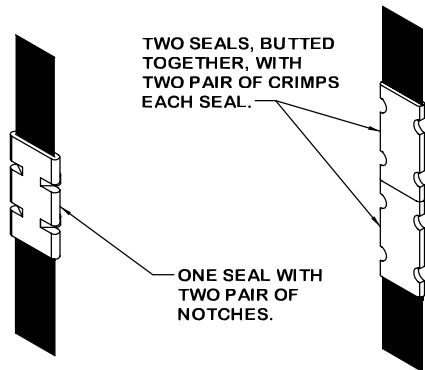
DETAIL B
METHOD OF INSTALLING 2" STRAPPING AND STAKE POCKET PROTECTORS (ALT PAD).

HOLD-DOWN STRAP ANCHORING DETAILS

FILL PIECE, 1" X 4" BY CUT-TO-FIT BETWEEN TIE PIECES (2 REQD). NAIL TO BUFFER PIECE W/1-6d NAIL EVERY 8".



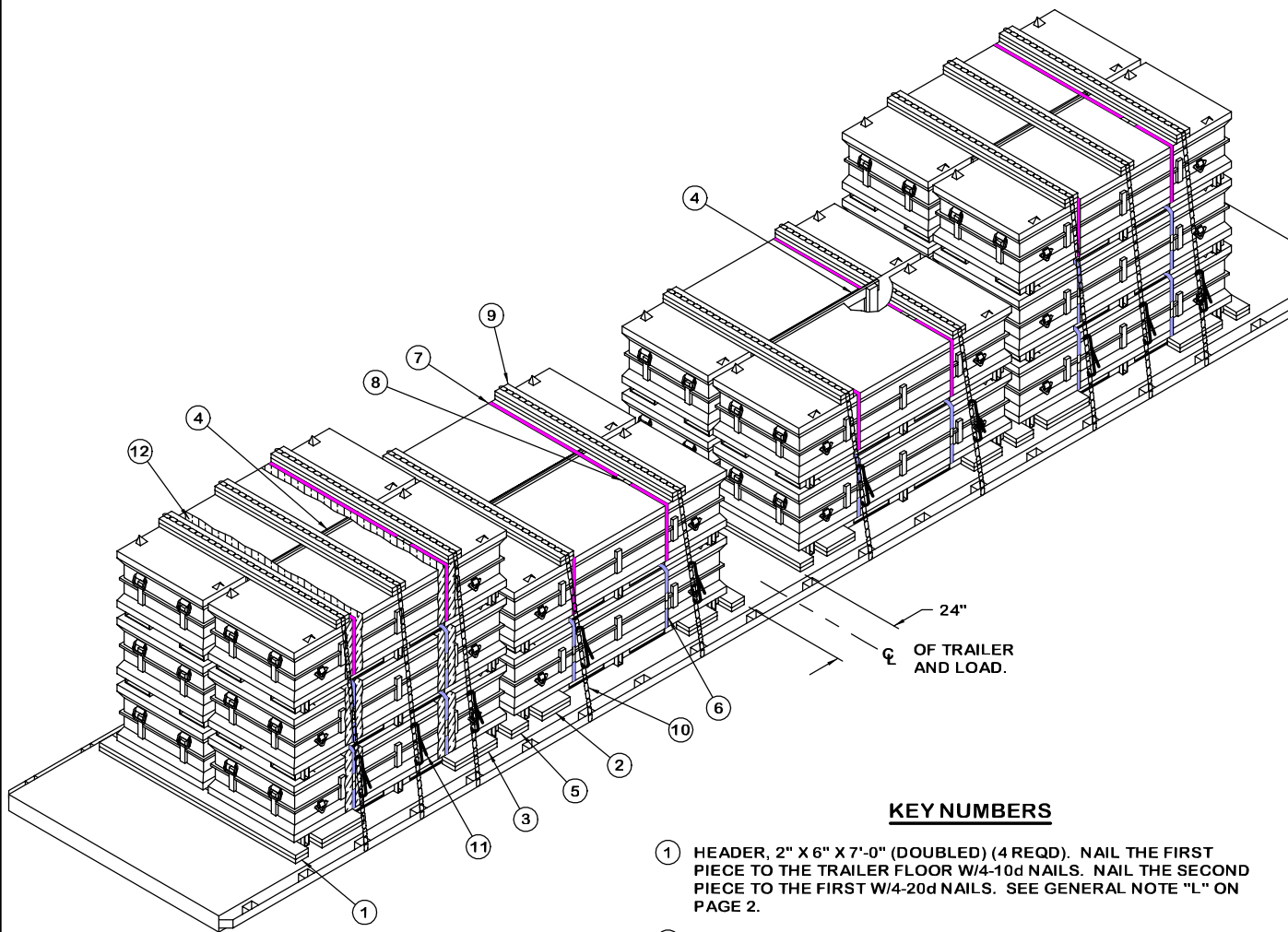
ANTI-CHAFING ASSEMBLY



STRAP JOINT A
METHOD OF SECURING A STRAP JOINT WHEN USING A NOTCH-TYPE SEALER.

STRAP JOINT B
METHOD OF SECURING A STRAP JOINT WHEN USING A CRIMP-TYPE SEALER.

END-OVER-END LAP JOINT DETAILS



ISOMETRIC VIEW

KEY NUMBERS

- ① HEADER, 2" X 6" X 7'-0" (DOUBLED) (4 REQD). NAIL THE FIRST PIECE TO THE TRAILER FLOOR W/4-10d NAILS. NAIL THE SECOND PIECE TO THE FIRST W/4-20d NAILS. SEE GENERAL NOTE "L" ON PAGE 2.
- ② SIDE BLOCKING, 2" X 6" X 12" (DOUBLED) (8 REQD). NAIL THE FIRST PIECE TO THE TRAILER FLOOR W/4-10d NAILS. NAIL THE SECOND PIECE TO THE FIRST IN A LIKE MANNER.
- ③ SIDE BLOCKING, 2" X 6" X 18" (DOUBLED) (8 REQD). NAIL THE FIRST PIECE TO THE TRAILER FLOOR W/5-10d NAILS. NAIL THE SECOND PIECE TO THE FIRST IN A LIKE MANNER.
- ④ ANTI-CHAFING ASSEMBLY (4 REQD, 2 FOR 2-LAYER, 2 FOR 3-LAYER). SEE THE DETAIL ON PAGE 9.
- ⑤ HEADER, 2" X 8" X 7'-0" (DOUBLED) (2 REQD). NAIL THE FIRST PIECE TO THE TRAILER FLOOR W/4-10d NAILS. NAIL THE SECOND PIECE TO THE FIRST W/4-20d NAILS.
- ⑥ STACK UNITIZING STRAP, 1-1/4" X .035" OR .031" X 11'-0" LONG STEEL STRAPPING (24 REQD, 2 PER 2-HIGH, 4 PER 3-HIGH STACK). INSTALL THROUGH FORK TINE OPENINGS OF A FIRST LAYER AND A SECOND LAYER CONTAINER, AND A SECOND AND THIRD LAYER CONTAINER AS APPLICABLE. STRAPS SHOULD BE POSITIONED AS FAR APART AS THE FORK TINE OPENINGS PERMIT. SEE SPECIAL NOTE 2 ON PAGE 5.
- ⑦ BUNDLING STRAP, 1-1/4" X .035" OR .031" X 17'-6" LONG STEEL STRAPPING (8 REQD). INSTALL TO ENCIRCLE, THROUGH FORK TINE OPENINGS, THE TWO LATERALLY ADJACENT CONTAINERS IN THE TOP LAYER, AS SHOWN. STRAPS SHOULD BE POSITIONED AS FAR APART AS THE FORK TINE OPENINGS PERMIT.
- ⑧ SEAL FOR 1-1/4" STEEL STRAPPING (64 REQD, 2 PER STRAP). CRIMP EACH SEAL WITH TWO PAIR OF CRIMPS. SEE GENERAL NOTE "M" ON PAGE 2 AND THE "END-OVER-END LAP JOINT DETAILS" ON PAGE 9.
- ⑨ CHAIN BOARD, 2" X 6" X 6'-4" (DOUBLED) (10 REQD). LAMINATE W/1-10d NAIL EVERY 8".

(KEY NUMBERS CONTINUED)

- ⑩ CHAIN, BINDING, 5/16" GRADE 70 BY A LENGTH TO SUIT (10 REQD). POSITION AS SHOWN ABOVE, FASTENING THE CHAIN GRABHOOKS TO THE TRAILER STAKE POCKETS. SEE "SPECIAL PROVISIONS FOR CHAIN TIEDOWN" ON PAGE 11.
- ⑪ LOAD BINDER, 5/16", OVER-CENTER TYPE (10 REQD, 1 PER CHAIN). WIRE TIE HANDLE TO PREVENT OPENING DURING TRANSPORT. FASTEN THE TENSIONED CHAIN, PIECE MARKED ⑩, TO THE CHAIN BOARD, PIECE MARKED ⑨, W/1-20d NAIL AT EACH END, BENDING OVER TO FORM A LOOP AROUND THE CHAIN LINK. SEE "SPECIAL PROVISIONS FOR CHAIN TIEDOWN" ON PAGE 11.
- ⑫ ANTI-CHAFING NEUTRAL BARRIER MATERIAL (AS REQD). POSITION UNDER ALL STRAPS AT POINTS OF CONTACT WITH THE CONTAINER, EXCEPT THRU FORK TINE OPENINGS.

SPECIAL PROVISIONS FOR CHAIN TIEDOWN

LADING MAY BE SECURED TO THE FLATBED TRAILER BY CARRIER-OWNED CHAINS AND LOAD BINDERS IN LIEU OF SPECIFIED STRAPPING, PROVIDED THE FOLLOWING CONDITIONS ARE MET AND THE PROCEDURES CONTAINED ON PAGES 10 AND 11 ARE FOLLOWED.

1. ONLY CHAINS AND LOAD BINDERS OF GOOD QUALITY WILL BE USED. ALL CHAINS AND LOAD BINDERS SHALL CONFORM TO THE NATIONAL ASSOCIATION OF CHAIN MANUFACTURER'S WELDED CHAIN SPECIFICATION ADOPTED NOVEMBER 1975.
2. ALL CHAINS SHALL BE MARKED AS PRESCRIBED BY THE NATIONAL ASSOCIATION OF CHAIN MANUFACTURER'S WELDED CHAIN SPECIFICATION ADOPTED NOVEMBER 1975. AT LEAST ONE LINK IN EVERY 36 LINKS SHALL CARRY THE MANUFACTURER'S PERMANENT AND DISTINCTIVE MARK IDENTIFYING THE GRADE OF CHAIN. CHAINS NOT MARKED IN THIS MANNER SHALL NOT BE USED. IN ADDITION TO THE GRADE MARKING, THE CHAIN MAY ALSO CARRY LETTER MARKINGS OR SYMBOLS IDENTIFYING THE CHAIN MANUFACTURER. THE PRESENCE OF THE MANUFACTURER'S IDENTIFICATION MARKING IS NOT MANDATORY.
3. BEFORE AND DURING INSTALLATION, THE CHAINS AND LOAD BINDERS SHALL BE INSPECTED FOR BENT HOOKS, STRETCH, GOUGES, BENT LINKS, WEAR, OR ANY OTHER NOTICEABLE DEFECTS. ANY DEFICIENCY SHALL BE CAUSE FOR REJECTION OF A CHAIN OR LOAD BINDER. CHAINS MUST NOT BE TWISTED DURING INSTALLATION. CAUTION: EXTREME CARE MUST BE EXERCISED WHEN TENSIONING CHAINS TO PREVENT DAMAGE OR PERMANENT DEFORMATION TO THE LADING.
4. CHAIN SIZES AND GRADES APPROVED FOR USE WITH FLATBED TRAILER LOADS ARE AS FOLLOWS:
 - A. 3/8", GRADE 43 HIGH TEST CHAIN
 - B. 5/16", GRADE 70 BINDING CHAIN
 - C. 3/8", GRADE 70 BINDING CHAIN
 - D. 5/16", GRADE 80 ALLOY STEEL CHAIN
 - E. 3/8", GRADE 80 ALLOY STEEL CHAIN
5. THE GRABHOOKS ON THE ENDS OF THE CHAIN MAY BE OF THE FOLLOWING TYPES WITH GRADE MARKINGS AS INDICATED.
 - A. CLEVIS GRABHOOKS, 3/8" SIZE, DO NOT REQUIRE GRADE MARKING. ALLOY GRABHOOKS, 5/16" SIZE, SHALL CARRY THE MANUFACTURER'S GRADE MARK OF 7, 70, OR 700. THE HOOKS SHALL BE USED ON THE APPROPRIATE SIZE CHAIN.
 - B. CLOSED EYE GRABHOOKS, 3/8" AND 5/16" SIZE, MAY BE USED ON THE APPROPRIATE SIZE CHAIN IF THEY ARE A PART OF A CHAIN ASSEMBLY WHICH WAS PROVIDED BY A CHAIN MANUFACTURER, AND THE CHAIN ASSEMBLY CARRIES THE CORRECT GRADE IDENTIFICATION MARKING AS PREVIOUSLY STATED. CLOSED EYE GRABHOOKS THAT FORM A PART OF THE CHAIN ASSEMBLY ARE EXEMPT FROM GRADE MARKINGS.
6. CONNECTING LINKS USED FOR CHAIN REPAIR MUST BE CORRECTLY MARKED AND BE EQUAL TO OR GREATER IN STRENGTH THAN THE CHAIN THEY ARE REPAIRING. CHAINS WITH UNMARKED CONNECTING LINKS SHALL NOT BE USED.
7. CHAIN AND FITTING OF A HIGHER GRADE MAY BE SUBSTITUTED FOR THE GRADES SPECIFIED IN NOTE 4 ABOVE.
8. LOAD BINDERS SHALL BE 5/16" TO 3/8" SIZE AND HAVE A MINIMUM BREAKING STRENGTH OF 16,200 POUNDS (WORKING LOAD LIMIT OF 5,400 POUNDS). OVERCENTER TYPE LOAD BINDERS SHALL BE SAFETY WIRED TO PREVENT ACCIDENTAL OPENING DURING TRANSPORT. LOAD BINDER SIZE SHALL BE COMPATIBLE WITH THE SIZE OF THE CHAIN BEING USED.

LOAD AS SHOWN

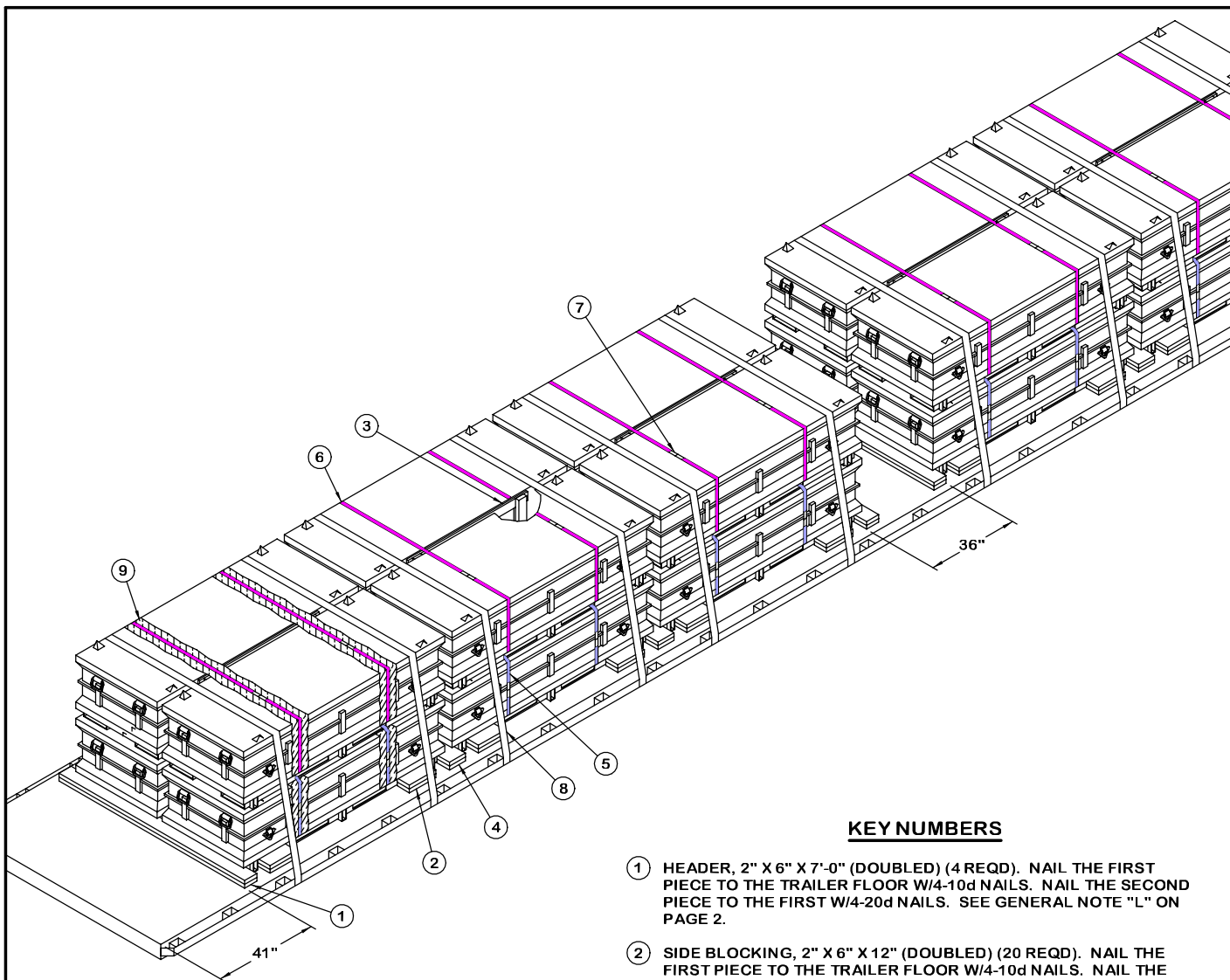
ITEM	QUANTITY	WEIGHT (APPROX)
CONTAINER (W/CBU-58)	20	41,680 LBS
DUNNAGE		1,011 LBS
TOTAL WEIGHT		42,691 LBS (APPROX)

SPECIAL NOTES:

1. A 20-CONTAINER LOAD IS SHOWN ON A 40'-0" LONG BY 8'-0" WIDE FLATBED TRAILER.
2. THE PROCEDURES DEPICTED ON PAGES 10 AND 11 CAN BE USED FOR ANY LOADS SHOWN HEREIN. NOTE: THE CHAINS MUST BE ATTACHED TO THE TRAILER STAKE POCKETS AND VERTICALLY IN LINE WITH THE CHAIN BOARDS. THE CHAIN BOARDS CAN BE SHIFTED LEFT OR RIGHT TO PROVIDE FOR VERTICAL ALIGNMENT. IT MAY BE NECESSARY TO COMPLY WITH THIS LOADING REQUIREMENT. SEE GENERAL NOTE "Q" ON PAGE 2.
3. PRIOR TO PLACING CONTAINERS ON A 40'-0" LONG TRAILER FOR THE 20-CONTAINER LOAD AS SHOWN, TWO HEADERS, PIECES MARKED (1), MUST FIRST BE INSTALLED ON THE CENTER LINE OF THE LENGTH OF THE TRAILER BED SO THAT CONTAINERS WILL BE POSITIONED TO COMPLY WITH REQUIREMENTS OF NOTE 2 ABOVE AS PERTAINS TO VERTICAL ALIGNMENT OF CHAINS, CHAIN BOARDS, AND TRAILER STAKE POCKETS.
4. IF DESIRED, AND IF THE CAPACITY OF THE FORKLIFT TRUCK PERMITS, TWO CONTAINERS MAY BE STACKED AND UNITIZED WITH TWO STEEL STRAPS, AS SPECIFIED, PRIOR TO PLACEMENT ON THE TRAILER.
5. THE DEPICTED PROCEDURES ALSO APPLY TO A SHIPMENT OF CBU-71 MUNITIONS IN THE CNU-180/E OR CNU-180B/E CONTAINERS.

BILL OF MATERIAL

LUMBER	LINEAR FEET	BOARD FEET
1" X 4"	70	24
2" X 4"	41	28
2" X 6"	223	223
2" X 8"	28	38
NAILS	NO. REQD	POUNDS
6d (2")	96	3/4
10d (3")	268	4-1/4
20d (4")	40	1-1/2
1-1/4" STEEL STRAPPING	404' REQD	57-3/4 LBS
SEAL FOR 1-1/4" STRAPPING	64 REQD	3 LBS
CHAIN, BINDING, 5/16"	214' REQD	257 LBS
BINDER, LOAD	10 REQD	60 LBS
ANTI-CHAFING MATERIAL	AS REQD	NIL



ISOMETRIC VIEW

KEY NUMBERS

- ① HEADER, 2" X 6" X 7'-0" (DOUBLED) (4 REQD). NAIL THE FIRST PIECE TO THE TRAILER FLOOR W/4-10d NAILS. NAIL THE SECOND PIECE TO THE FIRST W/4-20d NAILS. SEE GENERAL NOTE "L" ON PAGE 2.
- ② SIDE BLOCKING, 2" X 6" X 12" (DOUBLED) (20 REQD). NAIL THE FIRST PIECE TO THE TRAILER FLOOR W/4-10d NAILS. NAIL THE SECOND PIECE TO THE FIRST IN A LIKE MANNER.
- ③ ANTI-CHAFING ASSEMBLY (5 REQD). SEE THE DETAIL ON PAGE 9.
- ④ HEADER, 2" X 8" X 7'-0" (DOUBLED) (3 REQD). NAIL THE FIRST PIECE TO THE TRAILER FLOOR W/4-10d NAILS. NAIL THE SECOND PIECE TO THE FIRST W/4-20d NAILS.
- ⑤ STACK UNITIZING STRAP, 1-1/4" X .035" OR .031" X 11'-0" LONG STEEL STRAPPING (20 REQD). INSTALL THROUGH FORK TINE OPENINGS OF A FIRST LAYER AND A SECOND LAYER CONTAINER, AND A SECOND AND THIRD LAYER CONTAINER AS APPLICABLE. STRAPS SHOULD BE POSITIONED AS FAR APART AS THE FORK TINE OPENINGS PERMIT. SEE SPECIAL NOTE 2 ON PAGE 5.
- ⑥ BUNDLING STRAP, 1-1/4" X .035" OR .031" X 17'-6" LONG STEEL STRAPPING (10 REQD). INSTALL TO ENCIRCLE, THROUGH FORK TINE OPENINGS, THE TWO LATERALLY ADJACENT CONTAINERS IN THE TOP LAYER, AS SHOWN. STRAPS SHOULD BE POSITIONED AS FAR APART AS THE FORK TINE OPENINGS PERMIT.
- ⑦ SEAL FOR 1-1/4" STEEL STRAPPING (60 REQD, 2 PER STRAP). CRIMP EACH SEAL WITH TWO PAIR OF CRIMPS. SEE GENERAL NOTE "M" ON PAGE 2 AND THE "END-OVER-END LAP JOINT DETAILS" ON PAGE 9.
- ⑧ WEB STRAP ASSEMBLY (10 REQD). POSITION TO EXTEND FROM A WINCH ON ONE SIDE OF THE TRAILER, OVER THE CONTAINERS, TO AN ATTACHMENT POINT ON THE OPPOSITE SIDE. SEE THE "SPECIAL PROVISIONS FOR WEB STRAP TIEDOWN" ON PAGE 13.
- ⑨ ANTI-CHAFING NEUTRAL BARRIER MATERIAL (AS REQD). POSITION UNDER ALL STEEL STRAPPING AT POINTS OF CONTACT WITH THE CONTAINER, EXCEPT THRU FORK TINE OPENINGS.

SPECIAL PROVISIONS FOR WEB STRAP TIEDOWN

LADING MAY BE SECURED TO A FLATBED TRAILER BY WEB STRAP ASSEMBLIES IN LIEU OF STEEL STRAPPING OR CHAINS AND LOAD BINDERS, PROVIDED THE FOLLOWING CONDITIONS ARE MET.

1. ONLY WEB STRAPS OF GOOD QUALITY WILL BE USED. ALL WEB STRAPS AND ASSOCIATED HARDWARE SHALL CONFORM TO THE WEB SLING & TIEDOWN ASSOCIATION RECOMMENDED STANDARD SPECIFICATION FOR SYNTHETIC WEB TIEDOWNS, FIRST PUBLISHED IN 1991.
2. ALL WEB STRAP TIEDOWN ASSEMBLIES SHALL BE PERMANENTLY LABELED WITHIN 18" OF ONE END TO SHOW:
 - A. NAME OR TRADEMARK OF MANUFACTURER
 - B. WORKING LOAD LIMIT (WLL)
 - C. DATE OF MANUFACTURE (MONTH AND YEAR)
3. WEB STRAP ASSEMBLY MINIMUM BREAKING STRENGTH WILL BE AT LEAST THREE TIMES THE WLL MARKED ON THE STRAP.
4. THE TOTAL MINIMUM BREAKING STRENGTH (MBS) OF THE STRAPS USED TO RESTRAIN AMMUNITION ITEMS WILL BE AT LEAST 1-1/2 TIMES THE TOTAL WEIGHT OF THE ITEMS, WITH A MINIMUM OF TWO STRAPS POSITIONED OVER EACH LOAD UNIT ON A TRAILER. WRITTEN PROOF OF THE MBS OF THE STRAPS SHALL BE PROVIDED BY THE CARRIER TO THE SHIPPING ACTIVITY IF REQUESTED.
5. CARRIERS MUST COMPLY WITH ALL FEDERAL, STATE, AND LOCAL REGULATIONS APPLICABLE TO CARGO RESTRAINT USING WEB STRAPS.
6. WHEN USING STRAPS AND WINCHES FOR CARGO RESTRAINT, THE STRAPS WILL BE TENSIONED UNTIL TIGHT WITHOUT CAUSING DAMAGE TO THE CARGO. ONLY WINCH BARS WILL BE USED FOR OPERATING THE STRAP WINCHES.
7. BEFORE AND DURING INSTALLATION, THE WEB STRAP ASSEMBLIES SHALL BE INSPECTED FOR DEFECTS. STRAPS HAVING ANY OF THE FOLLOWING DEFECTS WILL NOT BE USED FOR THE RESTRAINT OF ANY AMMUNITION LOAD, WITH THE EXCEPTION OF ONE WITH FRAYED ENDS. A STRAP HAVING FRAYED ENDS CAN BE USED IF THE FRAYED END IS TRIMMED AND MELTED WITH HEAT OR FLAME UNTIL ALL STRANDS ARE SEIZED.
 - A. STRAP ASSEMBLY HARDWARE: SHALL BE INSPECTED FOR BENT HOOKS, GOUGES, CORROSION, SIGNS OF REPAIR, BENT RATCHETS OR WINCHES, WEAR, OR ANY OTHER NOTICEABLE DEFECTS.
 - B. STRAP WEBBING: SHALL BE INSPECTED FOR KNOTS, EXCESSIVE ABRASIVE WEAR, TEARS, PUNCTURES, CUTS, ACID OR CAUSTIC BURNS, BROKEN STITCHES, FRAYED ENDS, OIL OR GREASE SPOTS EXCEEDING 6 SQUARE INCHES, BLEACHING OF COLOR, INCREASED STIFFNESS, SPLICES, VISIBLE WEAR INDICATOR THREADS, OR ANY OTHER NOTICEABLE DEFECTS.
8. RATCHET HANDLES MUST BE IN THE LOCKED POSITION AND/OR WINCH LOCKING DEVICES MUST BE FULLY SEATED IN THE TEETH OF THE WINCH.
9. IF THE WINCHES BEING USED ARE THE REMOVABLE TYPE HAVING BOLTS FOR ATTACHMENT TO THE TRAILER, CARE MUST BE EXERCISED WHEN ATTACHING THE WINCHES TO THE TRAILER. IF EXCESSIVE FORCE IS EXERTED ON THE BOLT DURING TENSIONING, DEFORMATION OF THE WINCH BRACKET MAY OCCUR, AND SUBSEQUENTLY CAUSE FAILURE OF THE WINCH BRACKET DURING TRANSPORT. WINCHES MUST BE FASTENED TO THE TRAILER WITH A MINIMUM OF TWO BOLTS.

(CONTINUED AT RIGHT)

BILL OF MATERIAL		
LUMBER	LINEAR FEET	BOARD FEET
1" X 4"	77	26
2" X 4"	41	28
2" X 6"	96	96
2" X 8"	42	56
NAILS	NO. REQD	POUNDS
6d (2")	110	3/4
10d (3")	188	3
20d (4")	28	1
1-1/4" STEEL STRAPPING ---- 395' REQD ----- 56-1/2 LBS		
SEAL FOR 1-1/4" STRAPPING --- 60 REQD ----- 2-3/4 LBS		
WEB STRAP ASSEMBLIES ----- 10 REQD		
ANTI-CHAFING MATERIAL ----- AS REQD ----- NIL		

SPECIAL NOTES:

1. A 20-CONTAINER LOAD IS SHOWN ON A 40'-0" LONG BY 8'-0" WIDE FLATBED TRAILER.
2. IF DESIRED, AND IF THE CAPACITY OF THE FORKLIFT TRUCK PERMITS, TWO CONTAINERS MAY BE STACKED AND UNITIZED WITH TWO STEEL STRAPS, AS SPECIFIED, PRIOR TO PLACEMENT ON THE TRAILER.
3. THE DEPICTED PROCEDURES ALSO APPLY TO A SHIPMENT OF CBU-71 MUNITIONS IN THE CNU-180/E OR CNU-180B/E CONTAINERS.

(SPECIAL PROVISIONS FOR WEB STRAP TIEDOWN CONTINUED)

10. DRIVERS MUST BE INSTRUCTED TO PERIODICALLY CHECK THE TIGHTNESS OF THE WEB STRAP ASSEMBLIES AND RE-TIGHTEN, IF NECESSARY.
11. IF PROVIDED ON OR WITH THE WEB STRAP ASSEMBLIES, SCUFF SLEEVES/WEB PROTECTORS WILL BE USED WHEREVER THE STRAP PASSES OVER A SHARP CORNER OR IRREGULAR SURFACE. IF NOT PROVIDED, ANTI-CHAFING MATERIAL OF A SUITABLE THICKNESS WILL BE USED TO INSURE THAT THE STRAP WEBBING IS NOT DAMAGED DURING TRANSPORT OF THE LOAD.
12. THE HARDWARE FITTING OF THE TIEDOWN ASSEMBLIES MUST BE ATTACHED TO THE TRAILER IN SUCH A MANNER THAT THEY WILL REMAIN IN PLACE IF SLACK DEVELOPS IN THE STRAP DURING TRANSPORT.

LOAD AS SHOWN

ITEM	QUANTITY	WEIGHT (APPROX)
CONTAINER (W/CBU-58)	20	41,680 LBS
DUNNAGE		476 LBS
TOTAL WEIGHT		42,156 LBS (APPROX)

**PROVISIONS FOR THE USE OF FIREHOSE IN LIEU
OF CHAIN BOARDS OR STRAPPING BOARDS**

FIRE HOSE THAT IS NO LONGER SUITABLE FOR USE IN FIRE FIGHTING APPLICATIONS CAN BE SUBSTITUTED FOR THE DOUBLED 2" BY 6" WOODEN CHAIN BOARDS OR SINGLE 2" BY 6" STRAPPING BOARDS, AS SPECIFIED HEREIN, PROVIDED THE FOLLOWING CONDITIONS ARE MET.

1. SUBSTITUTION AND APPLICATION GUIDANCE

- A. FIRE HOSE MAY BE USED WHEREVER A CHAIN OR STRAPPING BOARD CONTACTS A RIGID SURFACE OF THE LOAD PROVIDED GOUGING, SCRATCHING, CRACKING, BENDING, CRUSHING, OR OTHER VISIBLE DAMAGE DOES NOT OCCUR TO THE LOAD.
- B. ONE OR MORE SEGMENTS OF FIRE HOSE MAY BE USED TO REPLACE EACH CHAIN OR STRAPPING BOARD PROVIDING LOAD PROTECTION DURING TENSIONING OF TIEDOWNS AND LOAD SHIPMENT; I.E., A CHAIN BOARD NEED NOT BE REPLACED BY A SINGLE SEGMENT OF HOSE, MULTIPLE SEGMENTS MAY BE USED INSTEAD, AS LONG AS THEY ARE SECURELY FASTENED TO THE TIEDOWN. REGARDLESS OF THE NUMBER OF SEGMENTS USED, THE HOSE LENGTH WILL BE SUCH THAT IT EXTENDS AT LEAST 6" BEYOND THE EDGE OF THE LOAD.
- C. FIRE HOSE CANNOT BE USED IN PLACE OF A PURCHASE BOARD ON A LOAD CONSISTING OF MORE THAN TWO PALLETS OR CONTAINERS ACROSS THE WIDTH OF THE TRAILER. THE FIRE HOSE CAN BE APPLIED TO THE OUTER STACKS, HOWEVER, A PURCHASE BOARD ASSEMBLY WILL STILL BE REQUIRED TO PROVIDE VERTICAL HOLD-DOWN ON THE CENTER STACK(S).

2. ACCEPTABLE FIRE HOSE

- A. FIRE HOSE TO BE USED WILL BE A RUBBER LINED SINGLE OR DOUBLE JACKETED TYPE; I.E., IT MUST HAVE A RUBBER LINING INSIDE A SINGLE OR DOUBLED FABRIC (COTTON, LINEN, ETC.) JACKET.
- B. THE COLLAPSED WIDTH OF THE HOSE MUST BE A MINIMUM OF 2-1/2".
- C. THE HOSE SEGMENTS USED MUST NOT CONTAIN DEFECTS THAT WILL ALLOW DIRECT CONTACT OF THE CHAIN OR LOAD BINDER WITH THE LOAD. THE HOSE THICKNESS MUST ALSO BE OF SUCH A THICKNESS THAT DENTING OR DAMAGE TO THE LOAD DOES NOT OCCUR DURING CHAIN OR STRAP TENSIONING.

3. SECUREMENT TO CHAINS OR STRAPS

- A. THE SEGMENTS OF HOSE USED UNDER EACH CHAIN OR STRAP WILL BE SECURED TO THE CHAIN OR STRAP WITH ONE FASTENER EVERY 12", WITH A MINIMUM OF TWO FASTENERS REQUIRED PER HOSE SEGMENT.
- B. FASTENERS CAN CONSIST OF PLASTIC ELECTRICAL TIES, NO. 14 GAGE WIRE, OR TAPE. REGARDLESS OF THE TYPE OF FASTENING USED, IT MUST PROVIDE A POSITIVE MEANS OF SECUREMENT OF THE HOSE TO THE CHAIN OR STRAP AND MUST NOT DAMAGE THE SURFACE OF THE CONTAINER, PALLET, OR ITEM IT CONTACTS.