

GENERAL NOTES

(GENERAL NOTES CONTINUED)

- A. THIS DOCUMENT HAS BEEN PREPARED AND ISSUED IN ACCORDANCE WITH AR 740-1 AND AUGMENTS TM 743-200-1 (CHAPTER 5).
- B. THE SPECIFIED OUTLOADING PROCEDURES ARE APPLICABLE TO THE MAVERICK (AGM-65) MISSILE IN A CNU-131/E CONTAINER. SUBSEQUENT REFERENCE TO "UNIT" HEREIN MEANS THE CNU-131/E CONTAINER WITH MISSILES INSTALLED. SEE PAGE 3 FOR DETAILS OF THE UNIT. **CAUTION:** REGARDLESS OF THE QUANTITY OF UNITS TO BE SHIPPED, THE "MAXIMUM GROSS WEIGHT" AS SHOWN ON THE COMMERCIAL CONTAINER BEING USED, MUST NOT BE EXCEEDED.
- C. THE LOAD AS SHOWN IS BASED ON A 6,050 POUND, 20' LONG BY 8' WIDE BY 8'-6" HIGH SIDE OPENING INTERMODAL COMMERCIAL CONTAINER WITH INSIDE DIMENSIONS OF 19'-4" LONG BY 89" WIDE BY 88" HIGH. THE LOAD IS DESIGNED FOR TRAILER/CONTAINER-ON-FLAT-CAR (T/COFC) SHIPMENT, HOWEVER, THE LOAD AS DESIGNED CAN ALSO BE MOVED BY OTHER SURFACE MODES OF TRANSPORT. **NOTICE:** OTHER INTERMODAL CONTAINERS OF THE SAME DESIGN CONFIGURATION CAN BE USED.
- D. WHEN LOADING THE DESIGNATED UNITS, THEY ARE TO BE POSITIONED SO AS TO ACHIEVE A TIGHT LOAD (TIGHT AGAINST THE END AND SIDE DUNNAGE ASSEMBLIES). ALTHOUGH A TOTAL OF 1-1/2" OF UNBLOCKED SPACE ACROSS THE WIDTH OF A LOAD BAY IS PERMITTED, LATERAL VOIDS WITHIN THE LOAD ARE TO BE HELD TO A MINIMUM. EXCESSIVE SLACK CAN BE ELIMINATED FROM A LOAD BY LAMINATING 6" WIDE PIECES OF APPROPRIATE THICKNESS (ES) TO THE ANTI-CHAFING PANELS AT THE DOOR OPENING SO AS TO CONTACT THE DOORS WHEN THEY ARE CLOSED. NAIL EACH PIECE TO THE PANEL W/1 APPROPRIATELY SIZED NAIL EVERY 12". ADDITIONALLY, THE THICKNESS OF THE BEARING PIECES ON ONE OR BOTH SIDES OF THE CONTAINER MAY BE ADJUSTED AS REQUIRED TO FACILITATE VARIANCE IN THE SIZE OF THE UNITS.
- E. THE 12-UNIT, 2-LAYER LOAD AND THE DUNNAGING AS DEPICTED ON PAGES 4 AND 5 ARE BASED ON THE UNIT DIMENSIONS SHOWN ON PAGE 3 AND AN 84-1/2" DOOR OPENING HEIGHT OF THE INTERMODAL CONTAINER. THE OVERALL HEIGHT OF THE 2-LAYER LOAD IS 58" AND CAN EASILY BE LOADED INTO THE CONTAINER THRU THE 84-1/2" HIGH DOOR OPENING. HOWEVER, IF THE CONTAINER HAS AN 86" OR MORE DOOR OPENING HEIGHT, IT MAY BE POSSIBLE TO LOAD AN 18-UNIT, 3-LAYER LOAD AS SHOWN ON PAGE 8 WITH AN OVERALL STACK HEIGHT OF 86". THEREFORE, PRIOR TO LOADING A 3-LAYER SHIPMENT, A FIELD CHECK SHOULD BE MADE TO DETERMINE THE ACTUAL OVERALL HEIGHT OF A 3-LAYER STACK AND THE ACTUAL DOOR OPENING HEIGHT OF THE SIDE OPENING INTERMODAL CONTAINER TO BE USED.
- F. DUNNAGE LUMBER SPECIFIED IS OF NOMINAL SIZE. FOR EXAMPLE, 1" X 4" MATERIAL IS ACTUALLY 3/4" THICK BY 3-1/2" WIDE AND 2" X 6" MATERIAL IS ACTUALLY 1-1/2" BY 5-1/2" WIDE.
- G. A STAGGERED NAILING PATTERN WILL BE USED WHENEVER POSSIBLE WHEN NAILS ARE DRIVEN INTO JOINTS OF DUNNAGE ASSEMBLIES OR WHEN LAMINATING DUNNAGE. ADDITIONALLY, THE NAILING PATTERN FOR AN UPPER PIECE OF LAMINATED DUNNAGE WILL BE ADJUSTED AS REQUIRED SO THAT A NAIL FOR THAT PIECE WILL NOT BE DRIVEN THROUGH ONTO OR RIGHT BESIDE A NAIL IN A LOWER PIECE.
- H. **CAUTION:** DO NOT NAIL DUNNAGE MATERIAL TO THE CONTAINER WALLS OR FLOOR. ALL NAILING WILL BE WITHIN THE DUNNAGE.
- J. PORTIONS OF THE CONTAINER DEPICTED WITHIN THIS DRAWING, SUCH AS THE SIDE DOORS, HAVE NOT BEEN SHOWN IN THE LOAD VIEWS FOR CLARITY PURPOSES.
- K. REQUIREMENTS CITED WITHIN THE BUREAU OF EXPLOSIVES PAMPHLET 6C APPLY WHEN THE SHIPMENT MOVES BY TRAILER/CONTAINER-ON-FLAT-CAR (T/COFC). SPECIAL T/COFC NOTES FOLLOW:
1. A LOADED CONTAINER MUST BE ON A CHASSIS EQUIPPED WITH TWO BOGIE ASSEMBLIES WHEN BEING MOVED IN TOFC SERVICE.
 2. THE LOAD LIMIT OF A T/COFC RAILCAR MUST NOT BE EXCEEDED, NOR WILL A CAR BE LOADED SO THAT THE TRUCK UNDER ONE END OF THE CAR CARRIES MORE THAN ONE-HALF OF THE LOAD LIMIT FOR THAT CAR.

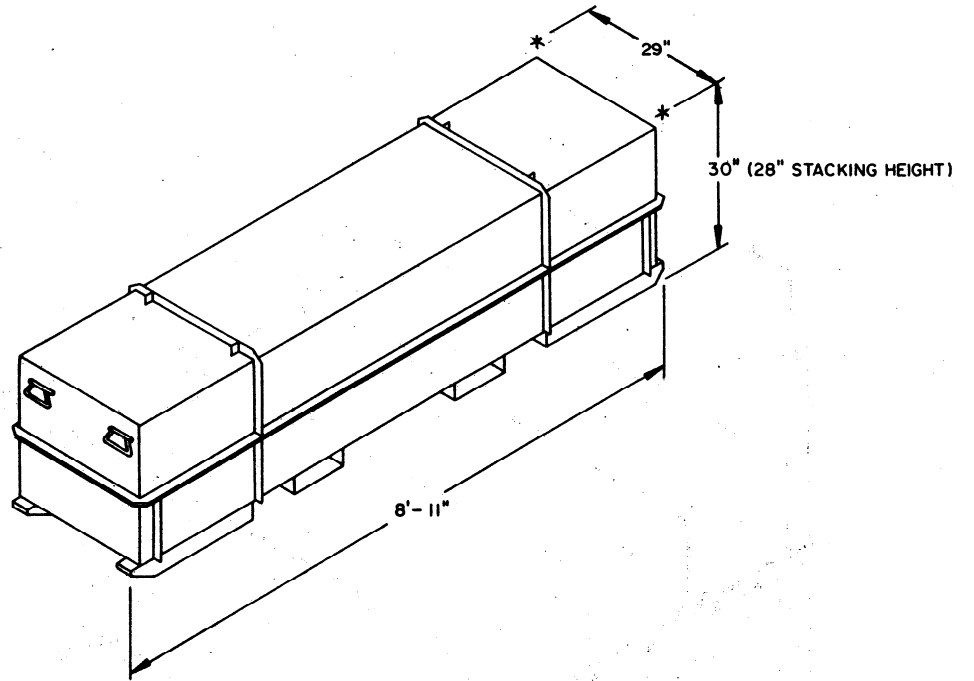
1. PREFABRICATE TWO END-WALL BLOCKING ASSEMBLIES, EIGHT ANTI-CHAFING PANELS, AND SIX CENTER GATES.
2. INSTALL ONE END-WALL BLOCKING ASSEMBLY AND ONE ANTI-CHAFING PANEL.
3. LOAD ONE STACK OF 2 UNITS.
4. REPEAT STEP 2.
5. REPEAT STEP 3.
6. INSTALL TWO CENTER GATES.
7. INSTALL 6" WIDE BY 36" LONG SOLID FILL PIECES OF THICKNESS (ES) REQUIRED TO FILL THE LONGITUDINAL VOIDS BETWEEN VERTICALS OF THE CENTER GATES.
8. INSTALL ONE ANTI-CHAFING PANEL AGAINST EACH STACK.
9. LOAD ONE STACK OF 2 UNITS AT EACH END OF THE CONTAINER.
10. REPEAT STEP 6.
11. REPEAT STEP 7.
12. REPEAT STEP 8.
13. REPEAT STEP 9.
14. REPEAT STEP 6.
15. REPEAT STEP 7.
- * 16. REPEAT STEP 8.

* SEE NOTE "D" AT LEFT FOR ELIMINATING LATERAL SLACK BEFORE CLOSING DOORS.

(CONTINUED AT RIGHT)

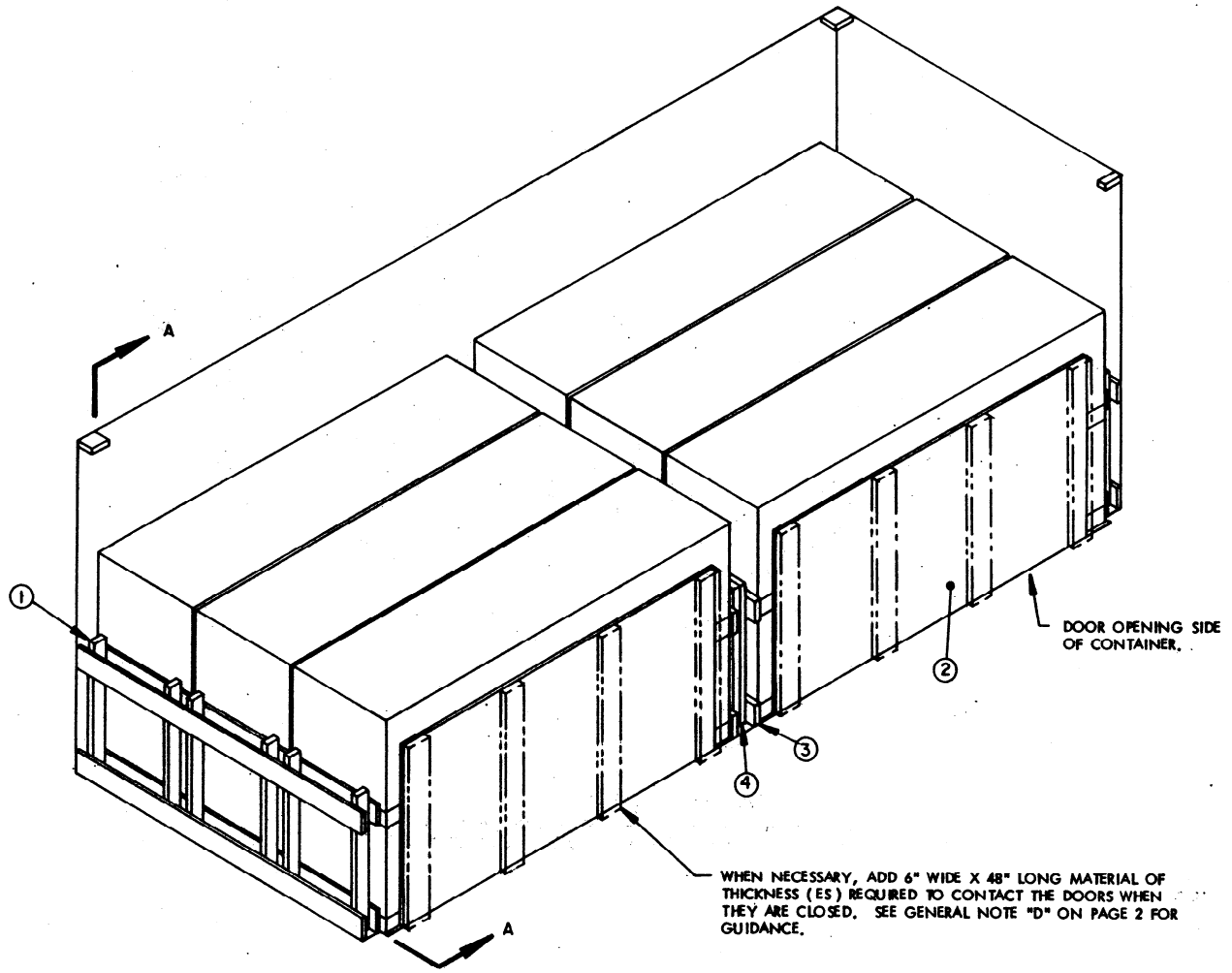
MATERIAL SPECIFICATIONS

- LUMBER** ----- : SEE TM 743-200-1 (DUNNAGE LUMBER) AND FED SPEC MM-L-751.
- NAILS** ----- : FED SPEC FF-N-105; COMMON.
- PLYWOOD** ----- : FED SPEC NN-P-530; GROUP B, CONSTRUCTION AND INDUSTRIAL PLYWOOD, INTERIOR WITH EXTERIOR GLUE, GRADE C-D. IF SPECIFIED GRADE IS NOT AVAILABLE, A BETTER INTERIOR OR AN EXTERIOR GRADE MAY BE SUBSTITUTED.
- STRAPPING, STEEL** - : CLASS I, TYPE I OR IV, HEAVY DUTY, FINISH A, B (GRADE 2), OR C, FED SPEC QQ-S-781.
- STRAP SEAL** ----- : TYPE D, STYLE I, II, OR IV, CLASS H, FINISH A, B (GRADE 2), OR C, FED SPEC QQ-S-781.



CNU-131/E CONTAINER

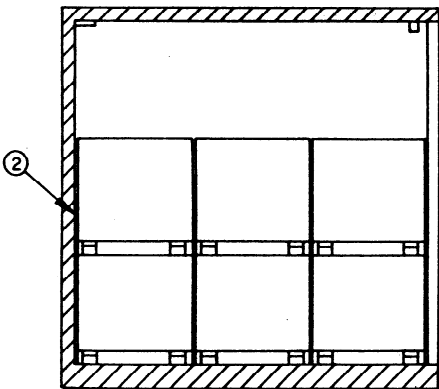
GROSS WEIGHT ----- 825 POUNDS (APPROX)
CUBE ----- 53.9 CUBIC FEET (APPROX)



ISOMETRIC VIEW

KEY NUMBERS

- ① END WALL BLOCKING ASSEMBLY (2 REQD). SEE THE "END WALL BLOCKING ASSEMBLY A" DETAIL ON PAGE 6. SEE GENERAL NOTES "G" AND "N" ON PAGE 2.
- ② ANTI-CHAFING PANEL (8 REQD). SEE THE "ANTI-CHAFING PANEL A" DETAIL ON PAGE 5. SEE GENERAL NOTE "D" ON PAGE 2.
- ③ CENTER GATE (6 REQD). SEE THE DETAIL ON PAGE 6. SEE GENERAL NOTE "G" ON PAGE 2. SEE GENERAL NOTE "N" ON PAGE 2 FOR PLACEMENT GUIDANCE.
- ④ SOLID FILL, 6" WIDE BY 36" LONG BY THE THICKNESS (ES) REQUIRED TO PROVIDE A TIGHT FIT BETWEEN THE VERTICAL PIECES OF THE CENTER GATES (REQUIRED AT 6 PLACES). NAIL TOGETHER AND TO GATE VERTICALS W/ APPROPRIATELY SIZED NAILS (10d FOR 2" THICK MATERIAL). SEE GENERAL NOTE "N" ON PAGE 2.

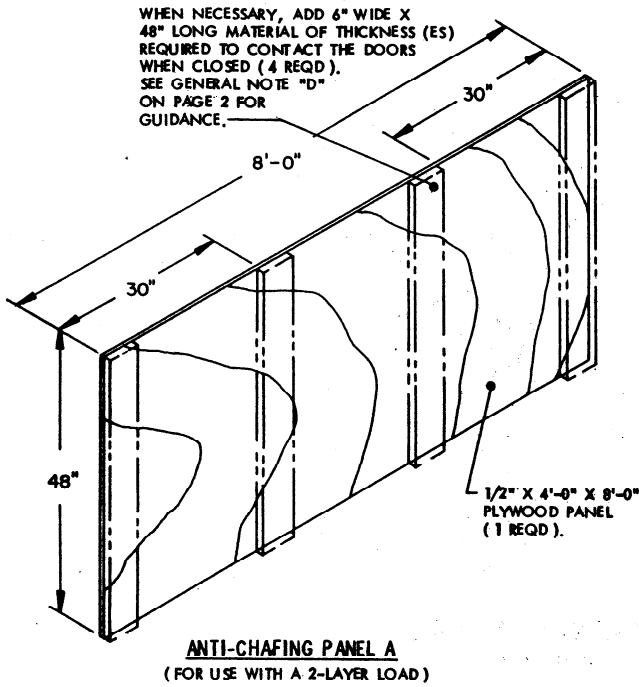


SECTION A-A

12-UNIT, 2-LAYER LOAD

SPECIAL NOTES:

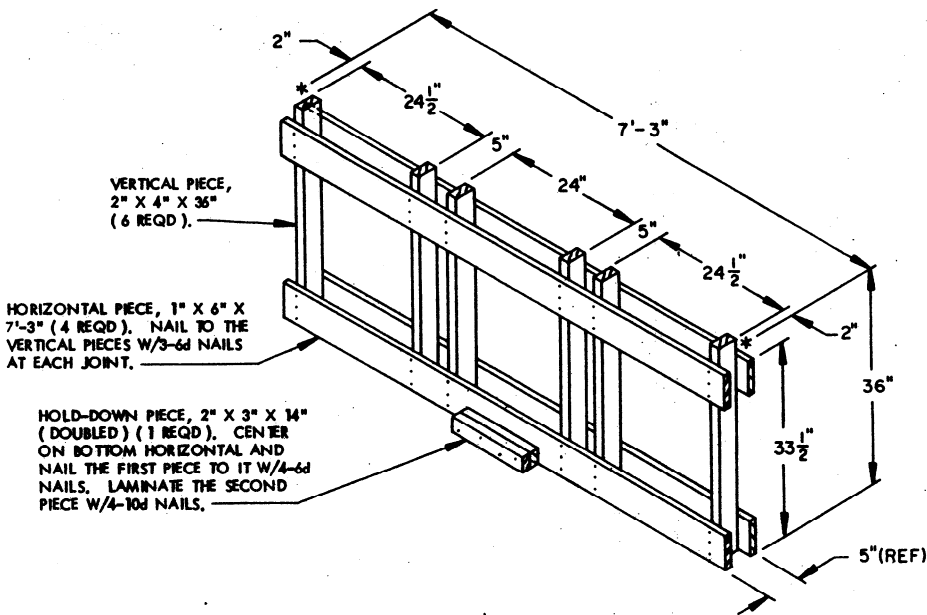
1. A 12-UNIT, 2-LAYER LOAD IS SHOWN IN A SIDE-OPENING INTERMODAL COMMERCIAL ISO CONTAINER. FOR LOADING GUIDANCE, SEE GENERAL NOTE "N" ON PAGE 2.
2. IF SOME UNITS ARE TO BE OMITTED FROM THE SECOND LAYER, SEE THE "OMITTED UNIT PROCEDURE" DETAIL ON PAGE 7.
3. IT MAY BE POSSIBLE TO SHIP AN 18-UNIT, 3-LAYER LOAD IN A SIDE-OPENING CONTAINER. SEE GENERAL NOTE "E" ON PAGE 2 FOR CRITERIA WHICH WILL APPLY.



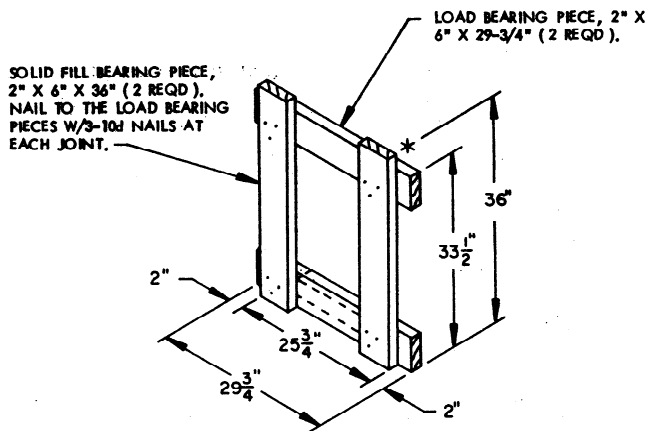
BILL OF MATERIAL		
LUMBER	LINEAR FEET	BOARD FEET
1" X 6"	76	38
2" X 3"	19	10
2" X 4"	36	24
2" X 6"	84	84
NAILS	NO. REQD	POUNDS
6d (2")	152	1
10d (3")	116	2
PLYWOOD, 1/2"-----256 SQ FT REQD-----		352 LBS

LOAD AS SHOWN

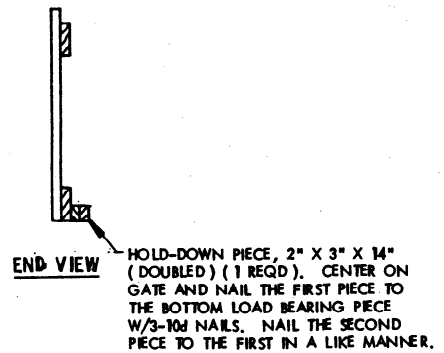
ITEM	QUANTITY	WEIGHT (APPROX)
CNU-131/E -----	12-----	9,900 LBS
DUNNAGE -----		664 LBS
SIDE OPENING CONTAINER -----		6,050 LBS
TOTAL WEIGHT-----		16,614 LBS (APPROX)



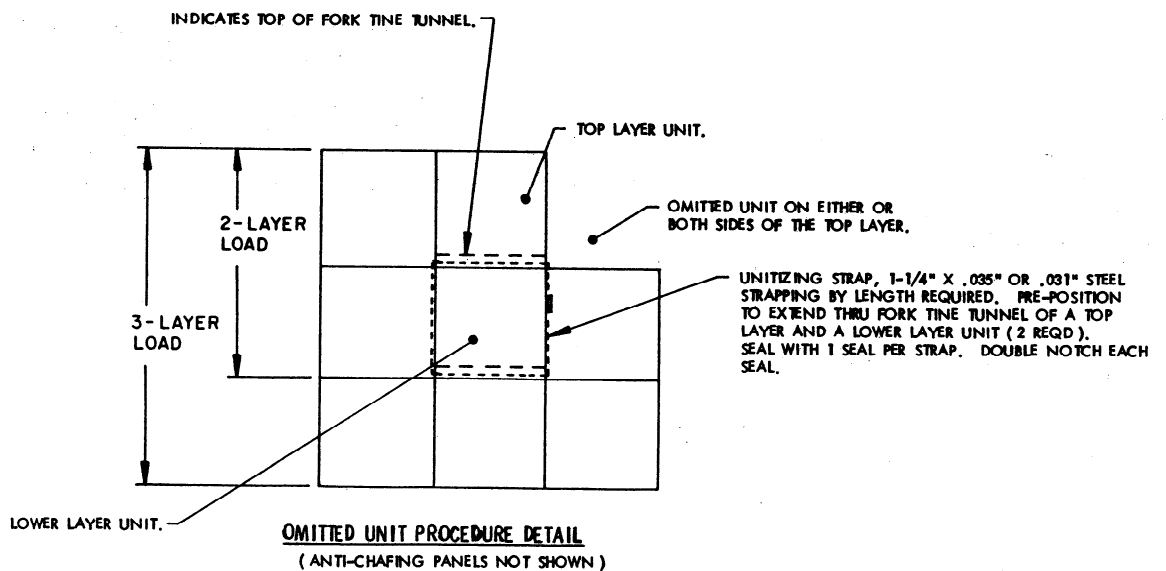
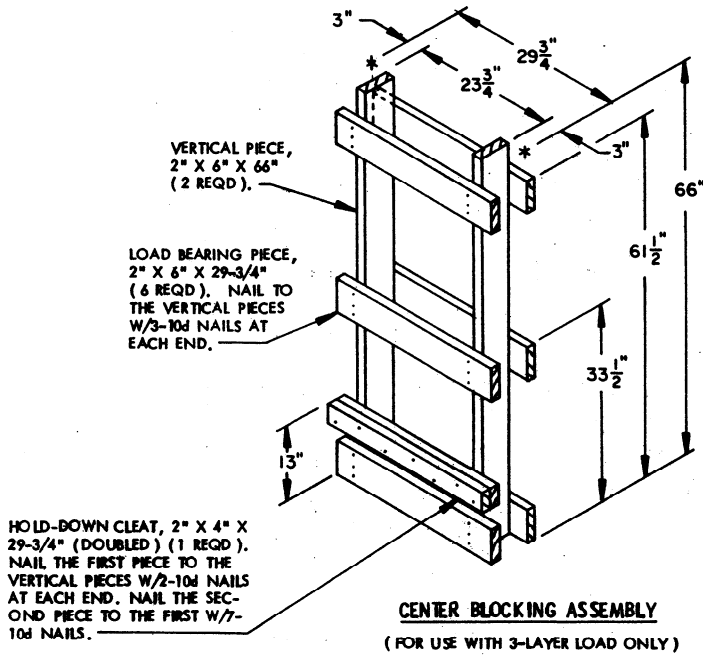
END WALL BLOCKING ASSEMBLY A
(FOR USE WITH A 2-LAYER LOAD)



CENTER GATE
(FOR USE WITH A 2-LAYER LOAD)

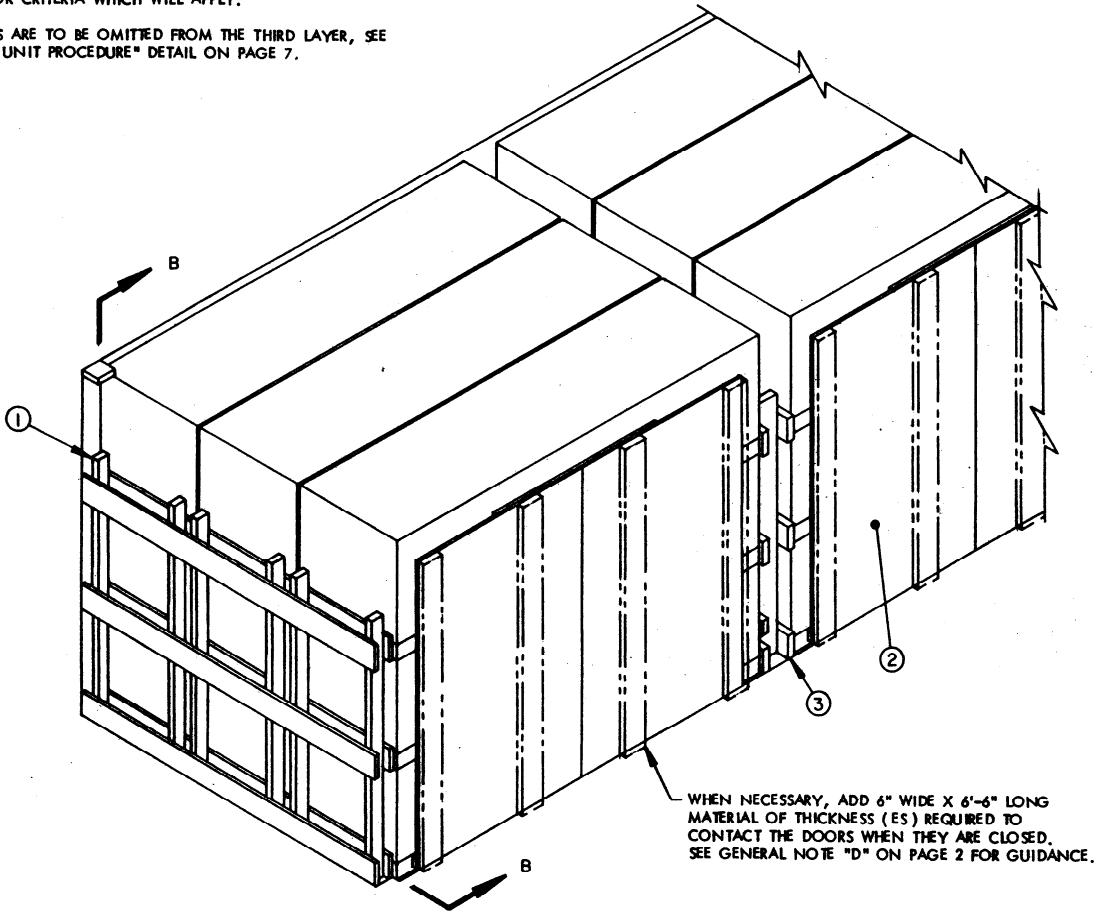


DETAILS



SPECIAL NOTES:

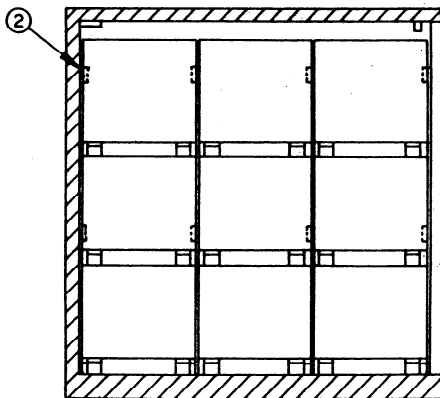
1. AN 18-UNIT, 3-LAYER LOAD IS SHOWN IN A SIDE-OPENING COMMERCIAL INTERMODAL CONTAINER. SEE GENERAL NOTE "E" ON PAGE 2 FOR CRITERIA WHICH WILL APPLY.
2. IF SOME UNITS ARE TO BE OMITTED FROM THE THIRD LAYER, SEE THE "OMITTED UNIT PROCEDURE" DETAIL ON PAGE 7.



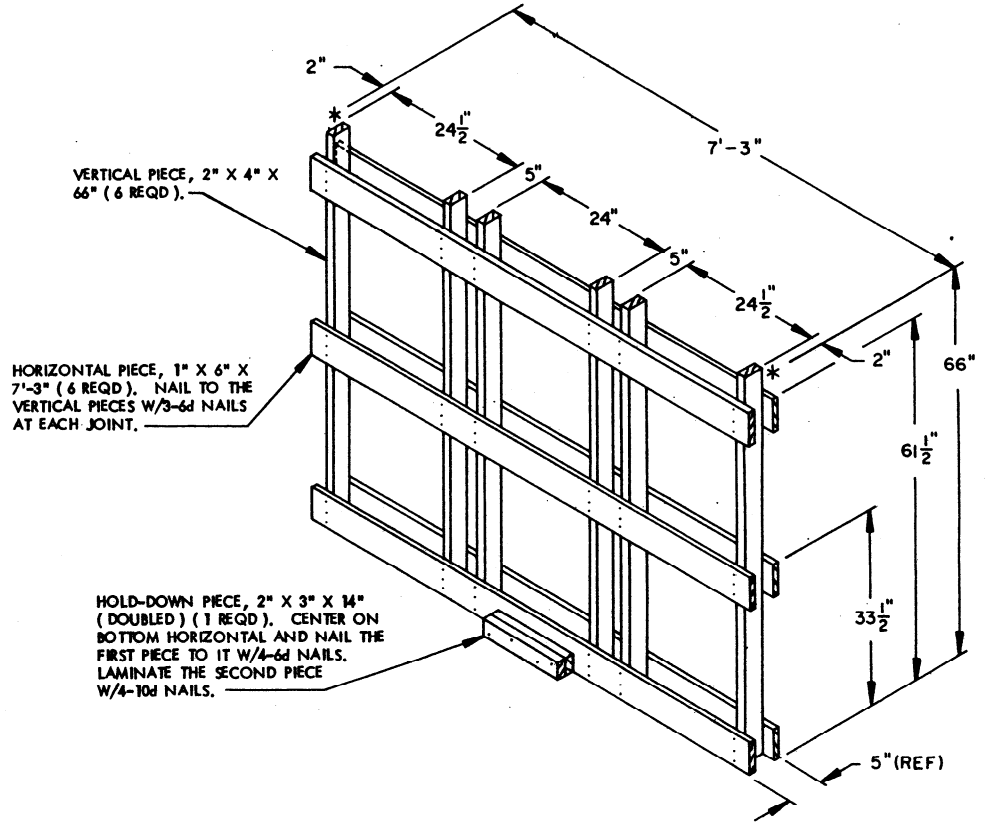
PARTIAL ISOMETRIC VIEW

KEY NUMBERS

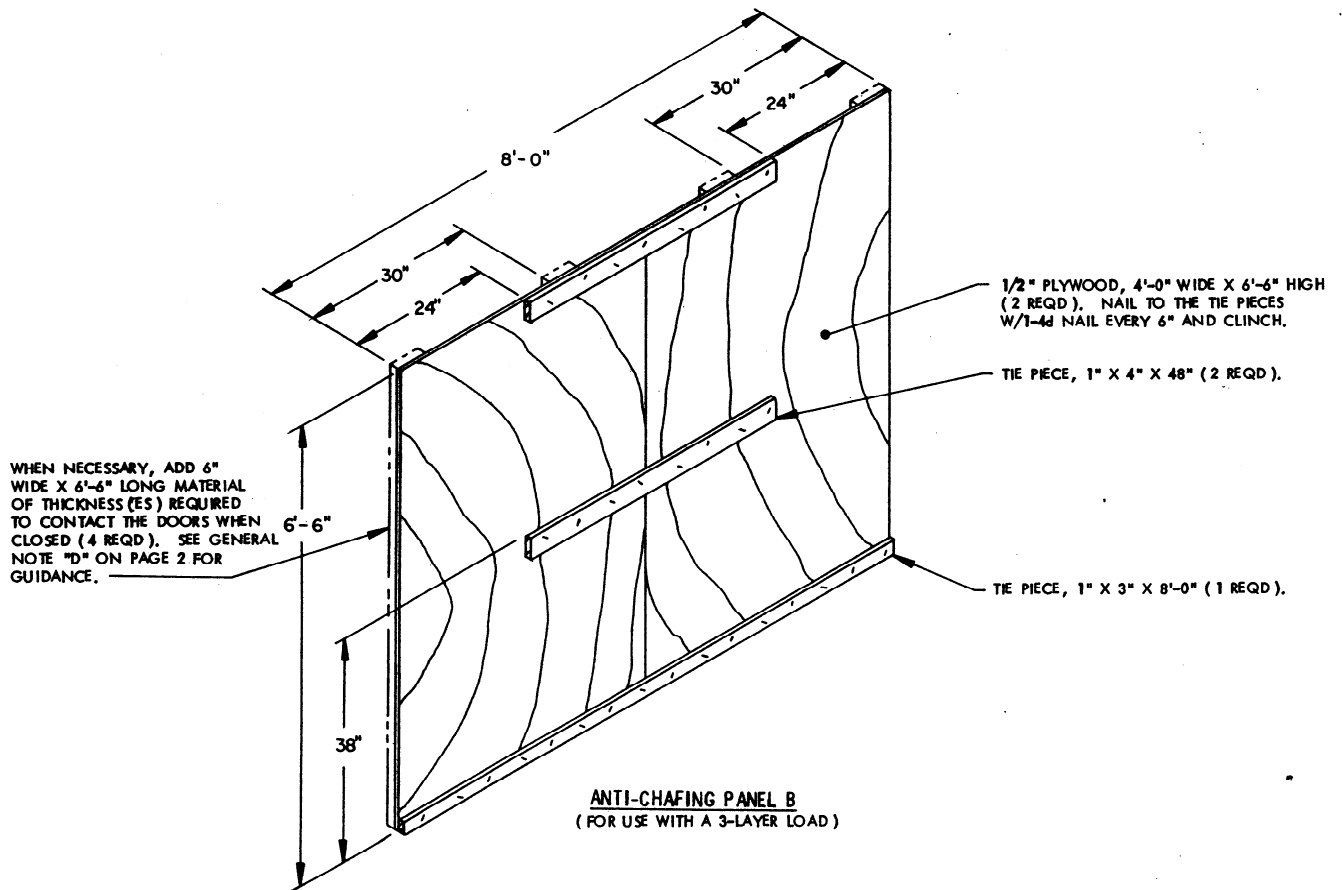
- ① END WALL BLOCKING ASSEMBLY (2 REQD). SEE THE "END WALL BLOCKING ASSEMBLY B" DETAIL ON PAGE 9. SEE GENERAL NOTES "G" AND "N" ON PAGE 2.
- ② ANTI-CHAFING PANEL (8 REQD). SEE THE "ANTI-CHAFING PANEL B" DETAIL ON PAGE 9. WHEN APPLICABLE, POSITION THE PLYWOOD SURFACE AGAINST THE SIDEWALL AND AGAINST THE DOORS WHEN CLOSED. SEE GENERAL NOTE "D" ON PAGE 2.
- ③ CENTER BLOCKING ASSEMBLY (3 REQD). SEE THE DETAIL ON PAGE 7.



SECTION B-B



END WALL BLOCKING ASSEMBLY B
(FOR USE WITH A 3-LAYER LOAD)



ANTI-CHAFING PANEL B
(FOR USE WITH A 3-LAYER LOAD)

DETAILS

