

APPROVED BY
 HAZARDOUS MATERIALS SYSTEMS
 (BOE) ASSOCIATION OF AMERICAN
 RAILROADS
[Signature]
 DATE 8/2/87

LOADING AND BRACING¹ WITH WOODEN DUNNAGE IN COMMERCIAL CONTAINERS OF BOMB, BLU-109/B, IN CNU-416/E CONTAINER

① LOADING AND BRACING SPECIFICATIONS SET FORTH WITHIN THIS DRAWING ARE APPLICABLE TO LOADS THAT ARE TO BE SHIPPED BY TRAILER/CONTAINER-ON-FLAT-CAR (T/COFC) RAIL CARRIER SERVICE. THESE SPECIFICATIONS MAY ALSO BE USED FOR LOADS THAT ARE TO BE MOVED BY MOTOR OR WATER CARRIERS. SEE GENERAL NOTE "K" ON PAGE 3.

INDEX

ITEM	PAGE (S)
GENERAL NOTES AND MATERIAL SPECIFICATIONS -----	2
CNU-416E CONTAINER DETAILS -----	3
TYPICAL LOADING PROCEDURES FOR CNU-416E CONTAINERS -----	4-7
DETAILS -----	8-11

REVISIONS				DRAFTSMAN SD	PROJ ENG LAE/WRE
				CHECKER DJB	LOG ENGRG OFFICE WJF/Emt
APPROVED, U.S. ARMY ARMAMENT, MUNITIONS AND CHEMICAL CORPS/AMC <i>[Signature]</i>					
APPROVED BY ORDER OF COMMANDING GENERAL, U.S. ARMY MATERIAL COMMAND (AMC) <i>[Signature]</i> U.S. ARMY DEFENSE AMMUNITION CENTER AND SCHOOL					
U.S. ARMY AMC DRAWING					
OCTOBER 1989					
CLASS	DIVISION	DRAWING	FILE		
19	48	7082	SP15 PB1004		

DO NOT SCALE

GENERAL NOTES

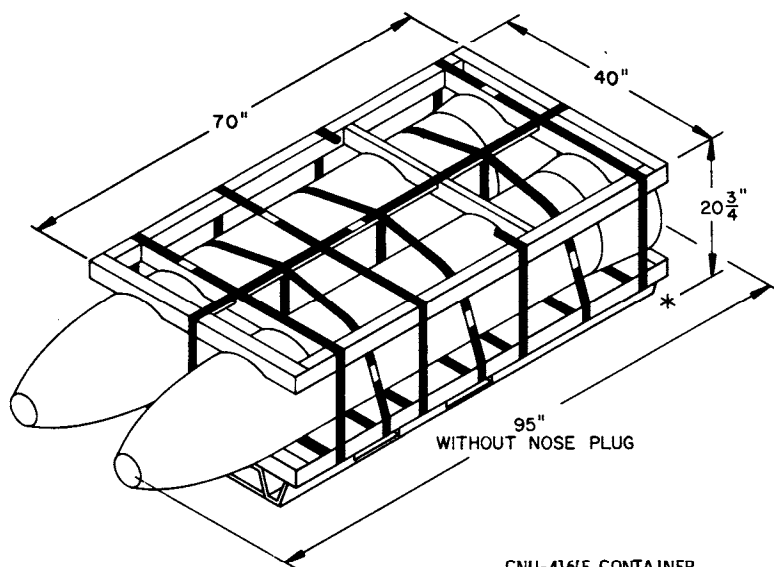
- A. THIS DOCUMENT HAS BEEN **PREPARED** AND ISSUED IN ACCORDANCE WITH AR 740-1, AND AUGMENTS TM 743-200-1 (CHAPTER 5).
- B. THE SPECIFIED OUTLOADING PROCEDURES ARE APPLICABLE TO LOADS OF CNU-416/E SHIPPING AND STORAGE CONTAINERS LOADED WITH TWO BLU-109/B BOMBS. SUBSEQUENT REFERENCE TO THE CONTAINER MEANS THE CONTAINER WITH AMMUNITION ITEMS. SEE PAGE 3 FOR THE DETAILS OF THE CONTAINER. **CAUTION:** REGARDLESS OF THE QUANTITY OF CONTAINERS TO BE SHIPPED, THE "MAXIMUM GROSS WEIGHT" OF 44,800 POUNDS MUST NOT BE EXCEEDED.
- C. THE LOADS AS SHOWN ARE BASED ON A 4,700 POUND 20' LONG BY 8' WIDE BY 8'-6" HIGH INTERMODAL COMMERCIAL CONTAINER WITH INSIDE DIMENSIONS OF 19'-4" LONG BY 92" WIDE BY 95" HIGH. THE LOAD IS DESIGNED FOR TRAILER/CONTAINER-ON-FLAT-CAR (T/COFC) SHIPMENT, HOWEVER, THE LOAD AS DESIGNED CAN ALSO BE MOVED BY OTHER SURFACE MODES OF TRANSPORT. **NOTICE:** OTHER CONTAINERS OF THE SAME DESIGN CONFIGURATION CAN BE USED.
- D. WHEN LOADING CONTAINERS, THEY ARE TO BE POSITIONED SO AS TO ACHIEVE A TIGHT LOAD (TIGHT AGAINST THE FORWARD AND SIDE DUNNAGE ASSEMBLIES). ALTHOUGH A TOTAL OF ONE AND ONE-HALF INCHES (1-1/2") OF UNBLOCKED SPACE ACROSS THE WIDTH OF A LOAD BAY IS PERMITTED, LATERAL VOIDS WITHIN THE LOAD ARE TO BE HELD TO A MINIMUM. EXCESSIVE SLACK CAN BE ELIMINATED FROM A LOAD BY LAMINATING ADDITIONAL PIECES OF APPROPRIATE THICKNESS TO THE BEARING PIECES ON THE SIDE FILL ASSEMBLIES ON ONE OR BOTH SIDES OF THE CONTAINER. NAIL EACH ADDITIONAL PIECE TO THE BEARING PIECE W/1 APPROPRIATELY SIZED NAIL EVERY 12". ADDITIONALLY, THE LENGTH OF THE VERTICAL AND FILL PIECES OF THE CENTER FILL ASSEMBLIES MAY BE ADJUSTED AS NECESSARY, TO FACILITATE VARIANCE IN CONTAINER SIZE.
- E. DUNNAGE LUMBER SPECIFIED IS OF A NOMINAL SIZE. FOR EXAMPLE, 2" X 4" MATERIAL IS ACTUALLY 1-1/2" THICK BY 3-1/2" WIDE AND 2" X 6" MATERIAL IS ACTUALLY 1-1/2" THICK BY 5-1/2" WIDE.
- F. A STAGGERED NAILING PATTERN WILL BE USED WHENEVER POSSIBLE WHEN NAILS ARE DRIVEN INTO JOINTS OF DUNNAGE ASSEMBLIES OR WHEN LAMINATING DUNNAGE. ADDITIONALLY, THE NAILING PATTERN FOR AN UPPER PIECE OF LAMINATED DUNNAGE WILL BE ADJUSTED AS REQUIRED SO THAT A NAIL FOR THAT PIECE WILL NOT BE DRIVEN THROUGH ON TO OR RIGHT BESIDE A NAIL IN A LOWER PIECE.
- G. IN SOME CONTAINERS, SUCH AS ALL STEEL CONTAINERS, THERE IS A SLOT AT THE CORNERS OF THE FORWARD WALL. A PIECE OF DUNNAGE MATERIAL MUST BE LAMINATED TO THE BUFFER PIECES ON THE FORWARD BLOCKING ASSEMBLY TO PROVIDE A FLAT SURFACE FOR THE 2" X 6" BUFFER PIECES. A PIECE OF 2" X 4", 2" X 3" OR A SPECIAL WIDTH PIECE CUT-TO-FIT CAN BE USED. THIS FILL PIECE WILL BE NAILED WITH ONE APPROPRIATELY SIZED NAIL EVERY 12". THIS PIECE IS NOT REQUIRED WHEN THE FRONT WALL OF THE CONTAINER IS SMOOTH AND FLAT.
- H. **CAUTION:** DO NOT NAIL DUNNAGE MATERIAL TO THE CONTAINER WALLS OR FLOOR. ALL NAILING WILL BE WITHIN THE DUNNAGE.
- J. PORTIONS OF THE CONTAINER DEPICTED WITHIN THIS DRAWING, SUCH AS ONE OF THE SIDE WALLS, HAVE NOT BEEN SHOWN IN THE LOAD VIEWS FOR CLARITY PURPOSES.
- K. REQUIREMENTS CITED WITHIN THE BUREAU OF EXPLOSIVES PAMPHLET 6C APPLY WHEN THE SHIPMENT MOVES BY TRAILER/CONTAINER-ON-FLAT-CAR (T/COFC). SPECIAL T/COFC NOTES FOLLOW.
1. A LOADED CONTAINER MUST BE ON A CHASSIS EQUIPPED WITH TWO BOGIE ASSEMBLIES WHEN BEING MOVED IN TOFC SERVICE
 2. THE LOAD LIMIT OF A T/COFC RAIL CAR MUST NOT BE EXCEEDED, NOR WILL A CAR BE LOADED SO THAT THE TRUCK UNDER ONE END OF THE CAR CARRIES MORE THAN ONE-HALF OF THE LOAD LIMIT FOR THAT CAR.
- L. DURING INTRASTATE AND /OR INTERSTATE MOVES BY MOTOR CARRIER, A PROPER CHASSIS/MODIFIED FLAT BED TRAILER MUST BE USED TO PRECLUDE VIOLATION OF ONE OR MORE "WEIGHT LAWS" APPLICABLE TO THE STATE OR STATES INVOLVED.
- M. CONVERSION TO METRIC EQUIVALENTS: DIMENSIONS WITHIN THIS DOCUMENT ARE EXPRESSED IN INCHES, AND WEIGHTS ARE EXPRESSED IN POUNDS. WHEN NECESSARY, THE METRIC EQUIVALENTS MAY BE COMPUTED ON THE BASIS OF ONE INCH EQUALS 25.4MM AND ONE POUND EQUALS 0.454 KG.

MATERIAL SPECIFICATIONS

LUMBER----- TM 743-200-1 (DUNNAGE LUMBER) AND
FED SPEC MM-L-751.

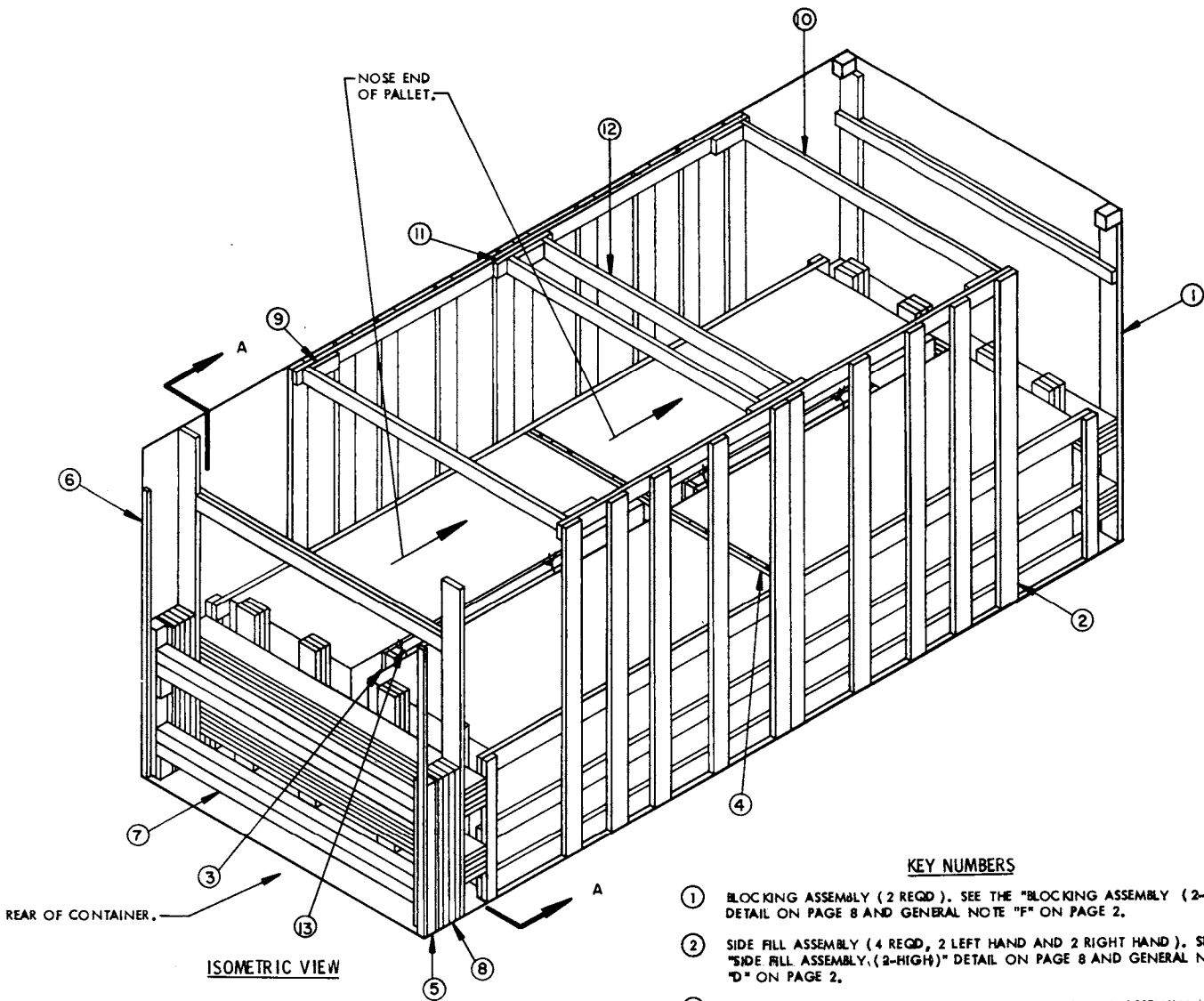
NAILS----- FED SPEC FF-N-105; COMMON.

STEEL, STRUCTURAL -- FED SPEC QQ-S-741; SQUARE STRUCTURAL
TUBING AND HOT-ROLLED STRIP.



CNU-416/E CONTAINER

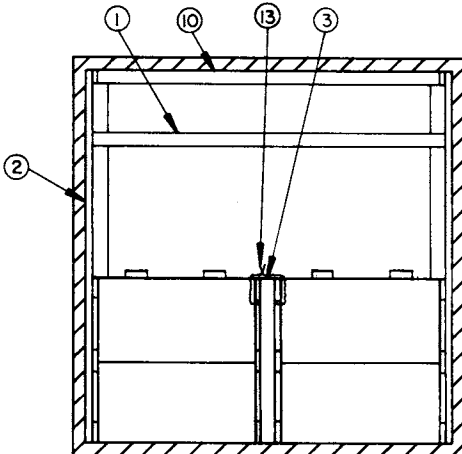
CONTAINER WEIGHT ----- 4,445 LBS (APPROX)
CUBE ----- 45.6 CUBIC FEET



ISOMETRIC VIEW

KEY NUMBERS

- ① BLOCKING ASSEMBLY (2 REQD). SEE THE "BLOCKING ASSEMBLY (2-HIGH)" DETAIL ON PAGE 8 AND GENERAL NOTE "F" ON PAGE 2.
- ② SIDE FILL ASSEMBLY (4 REQD, 2 LEFT HAND AND 2 RIGHT HAND). SEE THE "SIDE FILL ASSEMBLY (2-HIGH)" DETAIL ON PAGE 8 AND GENERAL NOTE "D" ON PAGE 2.
- ③ CENTER FILL ASSEMBLY (2 REQD). SEE THE "CENTER FILL ASSEMBLY (2-HIGH)" DETAIL ON PAGE 9 AND GENERAL NOTE "D" ON PAGE 2.
- ④ SEPARATOR GATE (1 REQD). SEE THE "SEPARATOR GATE (2-HIGH)" DETAIL ON PAGE 9.
- ⑤ DOOR POST VERTICAL (2 REQD). SEE THE "DOOR POST VERTICAL" DETAIL ON PAGE 9. SEE DETAILS "A" AND "B" ON PAGE 11.
- ⑥ DOOR POST VERTICAL RETAINER (2 REQD). SEE THE "DOOR POST VERTICAL RETAINER" DETAILS ON PAGE 10 AND "DETAIL A" ON PAGE 11. NAIL THROUGH THE LOWER HOLES INTO THE DOOR POST VERTICAL W/2-10d NAILS.
- ⑦ DOOR SPANNER, 4" X 4" MATERIAL, CUT TO A LENGTH THAT WILL PROVIDE FOR A DRIVE FIT (REF: 7'-1-3/8") (8 REQD). TOENAIL TO THE 4" X 4" DOOR POST VERTICALS W/2-12d NAILS AT EACH END. SEE THE "BEVEL-CUT" DETAIL ON PAGE 11.
- ⑧ FILL MATERIAL, 6" WIDE BY 48" LONG MATERIAL (AS REQD). NAIL EACH PIECE TO THE REAR BLOCKING ASSEMBLY AND/OR LAMINATE TOGETHER W/5 NAILS OF A SUITABLE SIZE (10d NAILS FOR 2" THICK MATERIAL). **CAUTION:** DO NOT NAIL TO THE DOOR POST VERTICALS, PIECES MARKED ⑤.
- ⑨ SPANNER PIECE CLEAT, 2" X 4" X 9" (6 REQD). LOCATE AS SHOWN AND NAIL TO THE TIE PIECE OR SPLICE FOR THE TIE PIECES W/3-10d NAILS.
- ⑩ SPANNER PIECE, 2" X 4" MATERIAL, CUT TO A LENGTH THAT WILL PROVIDE FOR A TIGHT FIT (REF: 7'-2") (2 REQD). NAIL TO TWO LONGITUDINALLY ADJACENT TIE PIECES OF THE SIDE FILL ASSEMBLIES W/2-10d NAILS AT EACH END.
- ⑪ SPLICE FOR TIE PIECES, 2" X 4" X 18" (2 REQD). NAIL TO TWO LONGITUDINALLY ADJACENT TIE PIECES OF THE SIDE FILL ASSEMBLIES W/3-10d NAILS AT EACH END.
- ⑫ SPANNER PIECE, 2" X 4" MATERIAL, CUT TO A LENGTH THAT WILL PROVIDE FOR A TIGHT FIT (REF: 6'-11") (2 REQD). TOENAIL TO THE SPLICE FOR TIE PIECES W/2-10d NAILS AT EACH END.
- ⑬ TIE WIRE, NO. 14 GAGE WIRE 48" LONG (4 REQD). WIRE TO FORM A LOOP AROUND CENTER FILL ASSEMBLY AND CNU-416/E CONTAINER. BRING ENDS TOGETHER AND TWIST TAUT.



SECTION A-A

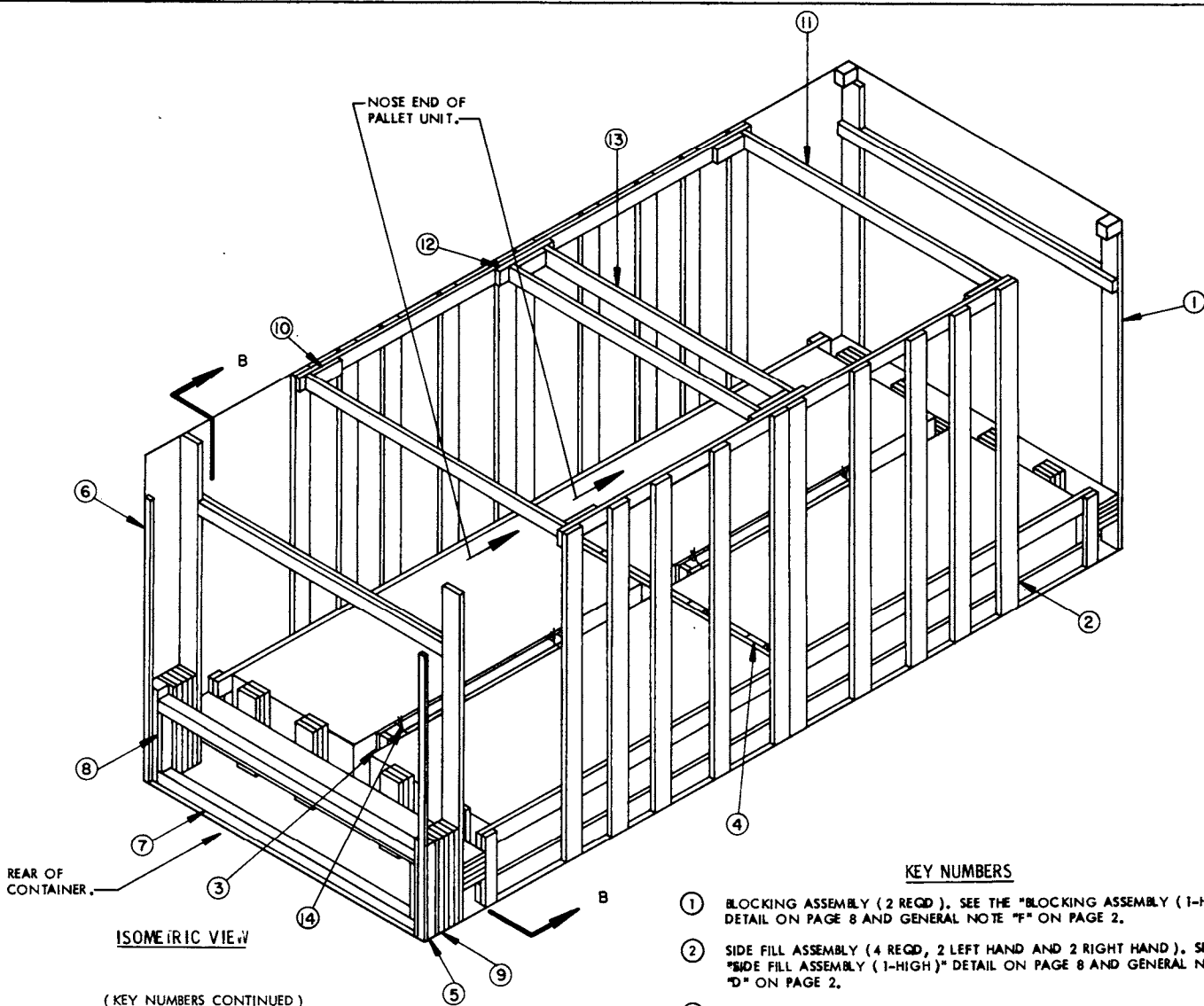
RECOMMENDED SEQUENTIAL LOADING PROCEDURES:

1. PREFABRICATE TWO BLOCKING ASSEMBLIES, FOUR SIDE FILL ASSEMBLIES, TWO CENTER FILL ASSEMBLIES, ONE SEPARATOR GATE AND NAIL A DOOR POST VERTICAL RETAINER TO EACH DOOR POST VERTICAL, ONE RIGHT HAND AND ONE LEFT HAND.
2. INSTALL ONE BLOCKING ASSEMBLY.
3. INSTALL ONE SIDE FILL ASSEMBLY, LOAD TWO CONTAINERS AND INSTALL ONE CENTER FILL ASSEMBLY. WIRE TIE CENTER FILL ASSEMBLY TO CONTAINER.
4. INSTALL ONE SIDE FILL ASSEMBLY AND LOAD TWO CONTAINERS.
5. INSTALL SEPARATOR GATE.
6. REPEAT STEP 3.
7. REPEAT STEP 4.
8. REPEAT STEP 2.
9. INSTALL THE TWO DOOR POST VERTICAL ASSEMBLIES (ONE RIGHT HAND AND ONE LEFT HAND).
10. INSTALL ONE DOOR SPANNER PIECE AT THE LOWEST POSITION.
11. INSTALL THE SOLID FILL TYPE LOAD BLOCKING MATERIAL.
12. INSTALL THE TWO SPLICE PIECES FOR THE TIE PIECES, THE SIX SPANNER PIECE CLEATS AND THE FOUR SPANNER PIECES. SEE " * " NOTE BELOW.
13. INSTALL THE DOOR SPANNER SUPPORT PIECES AND THE REMAINING DOOR SPANNER PIECES.

* IF DESIRED, PIECES MARKED ② AND ⑨ THROUGH ⑫ MAY BE INSTALLED PRIOR TO LOADING A CONTAINER.

BILL OF MATERIAL		
LUMBER	LINEAR FEET	BOARD FEET
1" X 6"	38	19
2" X 4"	151	101
2" X 6"	325	325
2" X 8"	152	203
4" X 4"	65	87
NAILS	NO. REQD	POUNDS
6d (2")	58	1/2
10d (3")	698	10-3/4
12d (3-1/4")	16	1/4
WIRE, NO. 14 GAGE ----- 16' REQD ----- 1/2 LB		
DOOR POST VERTICAL RETAINER ----- 2 REQD ----- 64 LBS		

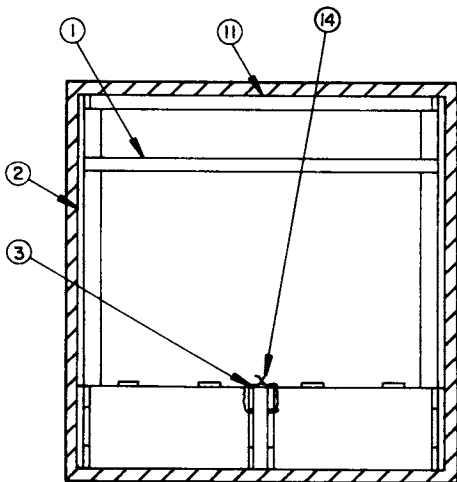
<u>LOAD AS SHOWN</u>		
ITEM	QUANTITY	WEIGHT (APPROX)
CNU-414/E -----	8 -----	35,560 LBS
DUNNAGE -----	-----	1,546 LBS
CONTAINER -----	-----	4,700 LBS
TOTAL WEIGHT -----		41,806 LBS



ISOMETRIC VIEW

(KEY NUMBERS CONTINUED)

- ⑭ TIE WIRE, NO. 14 GAGE WIRE 48" LONG (4 REQD). WIRE TO FORM A LOOP AROUND CENTER FILL ASSEMBLY AND CNU-416/E CONTAINER. BRING ENDS TOGETHER AND TWIST TAUT.



SECTION B-B

KEY NUMBERS

- ① BLOCKING ASSEMBLY (2 REQD). SEE THE "BLOCKING ASSEMBLY (1-HIGH)" DETAIL ON PAGE 8 AND GENERAL NOTE "F" ON PAGE 2.
- ② SIDE FILL ASSEMBLY (4 REQD, 2 LEFT HAND AND 2 RIGHT HAND). SEE THE "SIDE FILL ASSEMBLY (1-HIGH)" DETAIL ON PAGE 8 AND GENERAL NOTE "D" ON PAGE 2.
- ③ CENTER FILL ASSEMBLY (2 REQD). SEE THE "CENTER FILL ASSEMBLY (1-HIGH)" DETAIL ON PAGE 9 AND GENERAL NOTE "D" ON PAGE 2.
- ④ SEPARATOR GATE (1 REQD). SEE THE "SEPARATOR GATE (1-HIGH)" DETAIL ON PAGE 9.
- ⑤ DOOR POST VERTICAL, HARDWOOD, 4" X 4" X 28" (2 REQD). SEE DETAILS "A" AND "B" ON PAGE 11.
- ⑥ DOOR POST VERTICAL RETAINER (2 REQD). SEE THE "DOOR POST VERTICAL RETAINER" DETAILS ON PAGE 10 AND "DETAIL A" ON PAGE 11. NAIL TO THE DOOR POST VERTICAL W/4-10d NAILS.
- ⑦ DOOR SPANNER, 4" X 4" MATERIAL, CUT TO A LENGTH THAT WILL PROVIDE FOR A DRIVE FIT (REF: 7"-1-3/8") (2 REQD). TOENAIL TO THE 4" X 4" DOOR POST VERTICALS W/2-12d NAILS AT EACH END. SEE THE "BEVEL-CUT" DETAIL ON PAGE 11.
- ⑧ DOOR SPANNER SUPPORT PIECE, 2" X 4" X 17-1/2" (2 REQD). NAIL TO A DOOR POST VERTICAL W/3-10d NAILS AFTER THE LOWER DOOR SPANNER PIECE IS IN POSITION.
- ⑨ FILL MATERIAL, 6" WIDE BY 28" LONG MATERIAL (AS REQD). NAIL EACH PIECE TO THE REAR BLOCKING ASSEMBLY AND/OR LAMINATE TOGETHER W/S NAILS OF A SUITABLE SIZE (10d NAILS FOR 2" THICK MATERIAL). CAUTION: DO NOT NAIL TO THE DOOR POST VERTICALS, PIECES MARKED ⑤.
- ⑩ SPANNER PIECE CLEAT, 2" X 4" X 9" (6 REQD). LOCATE AS SHOWN AND NAIL TO THE TIE PIECE OR SPLICE TIE PIECES W/3-10d NAILS.
- ⑪ SPANNER PIECE, 2" X 4" MATERIAL, CUT TO A LENGTH THAT WILL PROVIDE FOR A TIGHT FIT (REF: 7"-2") (2 REQD). TOENAIL TO THE SIDE FILL ASSEMBLIES W/2-10d NAILS AT EACH END.
- ⑫ SPLICE FOR TIE PIECES, 2" X 4" X 18" (2 REQD). NAIL TO TWO LONGITUDINALLY ADJACENT TIE PIECES OF THE SIDE FILL ASSEMBLIES W/3-10d NAILS AT EACH END.
- ⑬ SPANNER PIECE, 2" X 4" MATERIAL, CUT TO A LENGTH THAT WILL PROVIDE FOR A TIGHT FIT (REF: 6"-11") (2 REQD). TOENAIL TO THE SPLICE FOR TIE PIECES W/2-10d NAILS AT EACH END.

(CONTINUED AT LEFT)

RECOMMENDED SEQUENTIAL LOADING PROCEDURES:

1. PREFABRICATE TWO BLOCKING ASSEMBLIES, FOUR SIDE FILL ASSEMBLIES, TWO CENTER FILL ASSEMBLIES, ONE SEPARATOR GATE, TWO DOOR POST VERTICALS, AND NAIL A DOOR POST VERTICAL RETAINER TO EACH DOOR POST VERTICAL, ONE RIGHT HAND AND ONE LEFT HAND.
2. INSTALL ONE BLOCKING ASSEMBLY.
3. INSTALL ONE SIDE FILL ASSEMBLY, LOAD ONE CONTAINER AND INSTALL ONE CENTER FILL ASSEMBLY.
4. INSTALL ONE SIDE FILL ASSEMBLY AND LOAD ONE CONTAINER.
5. INSTALL SEPARATOR GATE.
6. REPEAT STEP 3.
7. REPEAT STEP 4.
8. REPEAT STEP 2.
9. INSTALL THE TWO DOOR POST VERTICAL ASSEMBLIES (ONE RIGHT HAND AND ONE LEFT HAND).
10. INSTALL ONE DOOR SPANNER PIECE AT THE LOWEST POSITION.
11. INSTALL THE SOLID FILL TYPE LOAD BLOCKING MATERIAL.
12. INSTALL THE TWO SPLICE PIECES FOR THE TIE PIECES, THE SIX SPANNER PIECE CLEATS AND THE FOUR SPANNER PIECES. SEE "*" NOTE BELOW.
13. INSTALL THE REMAINING DOOR SPANNER PIECE.

* IF DESIRED, PIECES MARKED ② AND ⑩ THROUGH ⑬ MAY BE INSTALLED PRIOR TO LOADING A CONTAINER.

BILL OF MATERIAL		
LUMBER	LINEAR FEET	BOARD FEET
1" X 6"	25	13
2" X 4"	137	92
2" X 6"	233	233
2" X 8"	76	102
4" X 4"	19	26
AILS	NO. REQD	POUNDS
6d (2")	46	1/2
10d (3")	470	7-1/4
12d (3-1/4")	8	1/4
WIRE, NO. 14' GAGE -----	16' REQD -----	1/2 LBS
DOOR POST VERTICAL RETAINER -----	2 REQD -----	64 LBS

LOAD AS SHOWN		
ITEM	QUANTITY	WEIGHT (APPROX)
CNU-416/E -----	4 -----	17,780 LBS
DUNNAGE -----		1,005 LBS
CONTAINER -----		4,700 LBS
TOTAL WEIGHT -----		23,485 LBS

RETAINER PIECE, 2" X 4" BY
CONTAINER WIDTH MINUS
1" (REF: 7'-7") (1 REQD).
NAIL TO THE BUFFER PIECES
W/2-10d NAILS AT EACH
JOINT.

BUFFER PIECE, 2" X 6" BY
INSIDE CONTAINER HEIGHT
MINUS 1/2" (2 REQD).
NAIL TO THE BEAM ASSEMBLIES
W/5-10d NAILS.

LOAD BEARING PIECE, 2" X
6" X 44" (TRIPLED) (4 REQD).
NAIL THE FIRST PIECE TO THE
BEAM ASSEMBLIES W/3-10d
NAILS EACH JOINT. LAMI-
NATE THE SECOND PIECE TO
THE FIRST W/1-10d NAIL EVERY
8". LAMINATE THE THIRD
PIECE TO THE SECOND IN
A LIKE MANNER.

SEE GENERAL NOTE "G" ON PAGE 3.

SPREADER PIECE, 2" X 4" X 6'-8"
(1 REQD). LAMINATE TO THE
RETAINER PIECE W/7-10d NAILS.

BEAM ASSEMBLY, 2" X 8" BY
INSIDE CONTAINER WIDTH MINUS
1" (REF: 7'-7") (QUINTUPLED)
(2 REQD). LAMINATE THE SECOND
PIECE TO THE FIRST W/11-10d NAILS.
LAMINATE EACH ADDITIONAL PIECE
IN A LIKE MANNER.

INSIDE CONTAINER
WIDTH MINUS 1"
(REF: 7'-7")

BLOCKING ASSEMBLY

WHEN THE BLOCKING ASSEMBLY IS USED IN
THE LOAD ON PAGE 6 (1-UNIT HIGH) THE
UPPER BEAM ASSEMBLY WILL BE ELIMINATED,
AND THE LOAD BEARING PIECES WILL BE DECREASED
TO 22" IN LENGTH.

TIE PIECE, 2" X 4" X 6'-3-1/2"
(1 REQD). NAIL TO THE
VERTICAL PIECES W/2-10d
NAILS AT EACH JOINT.

VERTICAL PIECE, 2" X
6" BY INSIDE
CONTAINER HEIGHT
MINUS 1" (REF: 7'-10")
(5 REQD).

INSIDE CONTAINER
HEIGHT MINUS 1"
(REF: 7'-10")

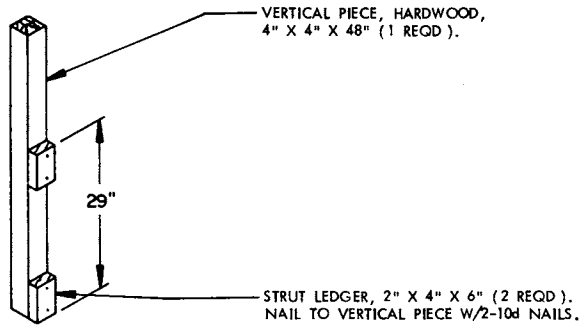
48"
FOR 2-
HIGH
21"
FOR 1-
HIGH

FILL PIECE, 2" X 4"
X 48" (1 REQD).

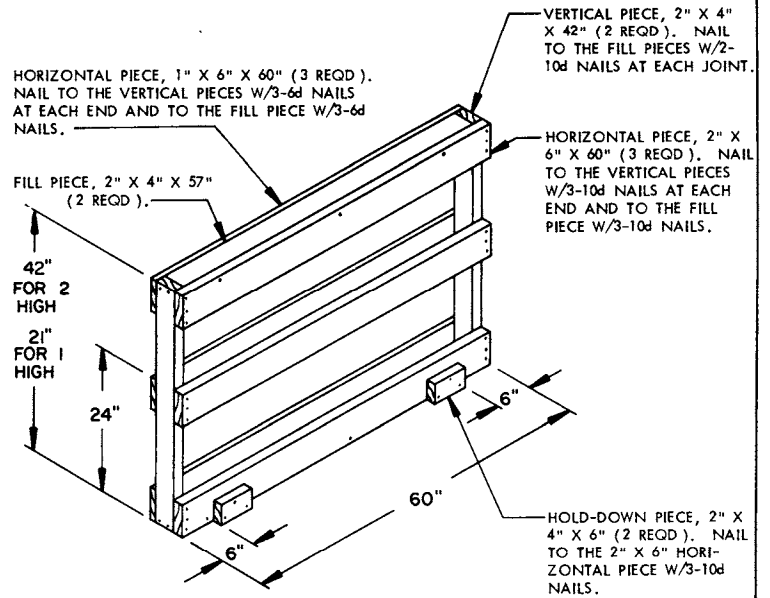
BEARING PIECE, 2" X 6" X 8'-5-1/2" (3 REQD).
NAIL TO VERTICAL PIECES W/3-10d NAILS AT
EACH JOINT AND TO THE FILL PIECE W/2-10d
NAILS.

SIDE FILL ASSEMBLY

A LEFT HAND ASSEMBLY IS DEPICTED. TWO LEFT HAND AND TWO RIGHT
HAND ASSEMBLIES ARE REQUIRED. NOTE: WHEN THE SIDE FILL ASSEMBLY
IS USED IN THE LOAD DEPICTED ON PAGE 6 (1-UNIT HIGH), THE MIDDLE
BEARING PIECE WILL BE ELIMINATED, THE UPPER BEARING PIECE WILL BE
LOWERED TO 21", AND THE FILL PIECE WILL BE DECREASED TO 21" IN
LENGTH.

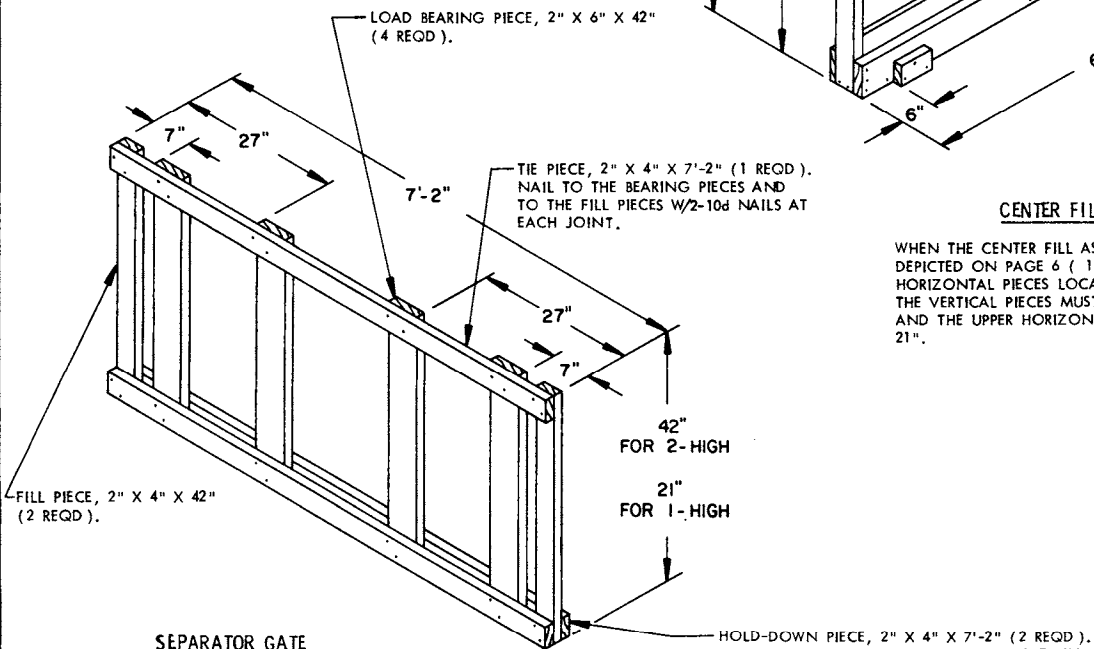


DOOR POST VERTICAL
FOR USE WITH 2-HIGH LOADS.



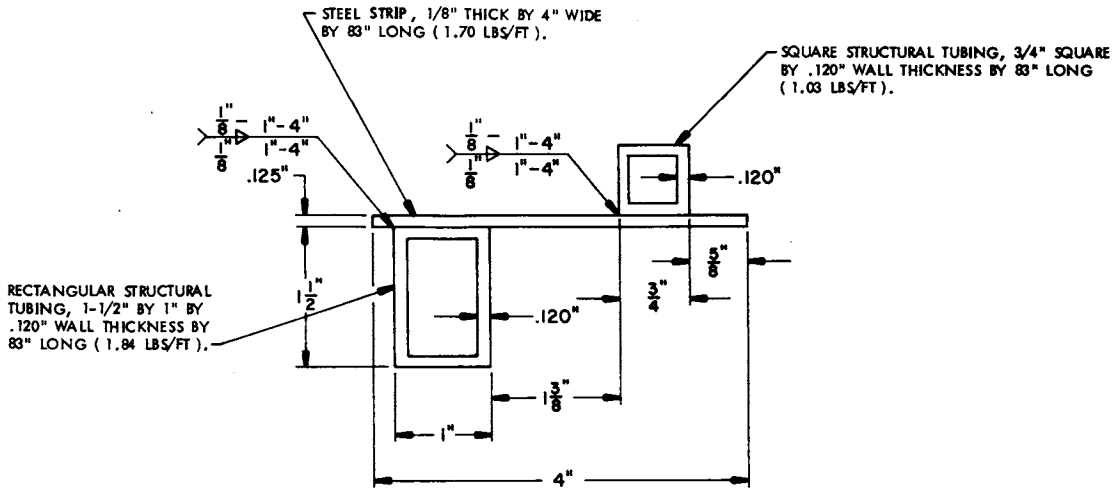
CENTER FILL ASSEMBLY

WHEN THE CENTER FILL ASSEMBLY IS USED IN THE LOAD
DEPICTED ON PAGE 6 (1 UNIT HIGH), THE MIDDLE 2
HORIZONTAL PIECES LOCATED AT THE 24", MUST BE OMITTED,
THE VERTICAL PIECES MUST BE DECREASED TO 21" IN LENGTH
AND THE UPPER HORIZONTAL PIECES, MUST BE LOWERED TO
21".

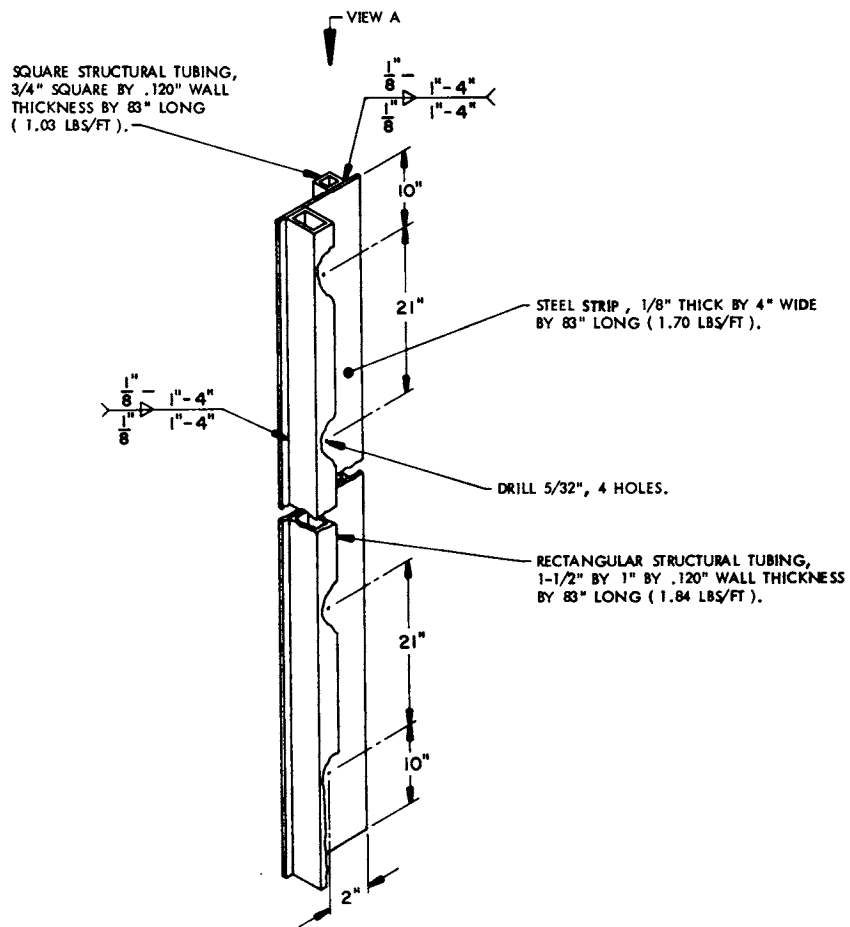


SEPARATOR GATE

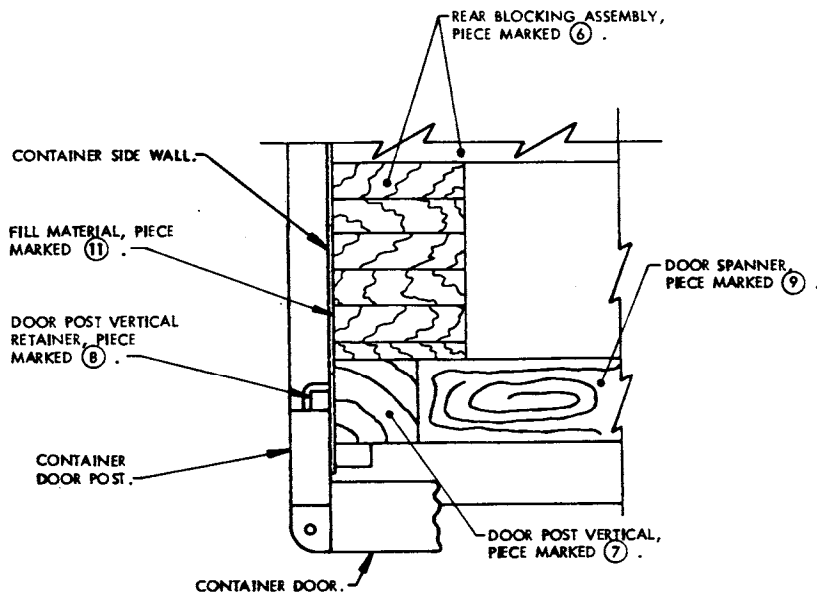
WHEN THE SEPARATOR GATE IS USED IN THE LOAD
DEPICTED ON PAGE 6 (1 UNIT HIGH), THE FILL
PIECES AND THE BEARING PIECES MUST BE DECREASED
TO 21" IN LENGTH, AND THE TIE PIECE MUST BE
LOWERED TO 21".



VIEW A

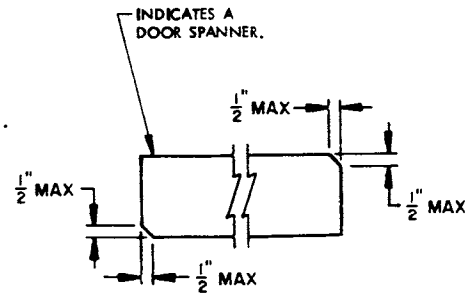


DOOR POST VERTICAL RETAINER



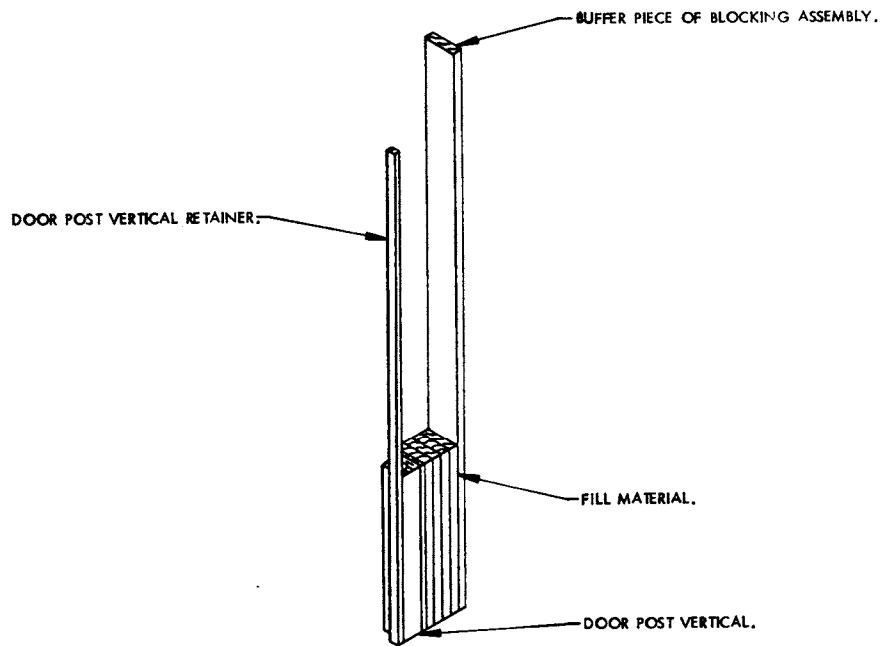
DETAIL A

A PARTIAL PLAN VIEW OF THE LEFT REAR PORTION OF THE CONTAINER IS SHOWN DEPICTING THE PROPER POSITION OF THE DOOR POST VERTICAL AND ADJACENT DUNNAGE PIECES.



BEVEL-CUT

IF DESIRED, EACH END OF A DOOR SPANNER PIECE MAY BE BEVEL-CUT AS SHOWN ABOVE TO FACILITATE THE ACHIEVEMENT OF A TIGHT DOOR-POST-TO-DOOR-POST FIT.



DETAIL B

DOOR SPANNERS HAVE BEEN OMITTED FOR CLARITY PURPOSES..

