

STORAGE IN APPROVED MAGAZINES OF ROCKET MOTOR, MK17 OR SR-116, (SIDEWINDER), PACKED 1 PER METAL CONTAINER, UNITIZED 30 CONTAINERS PER PALLET UNIT

INDEX

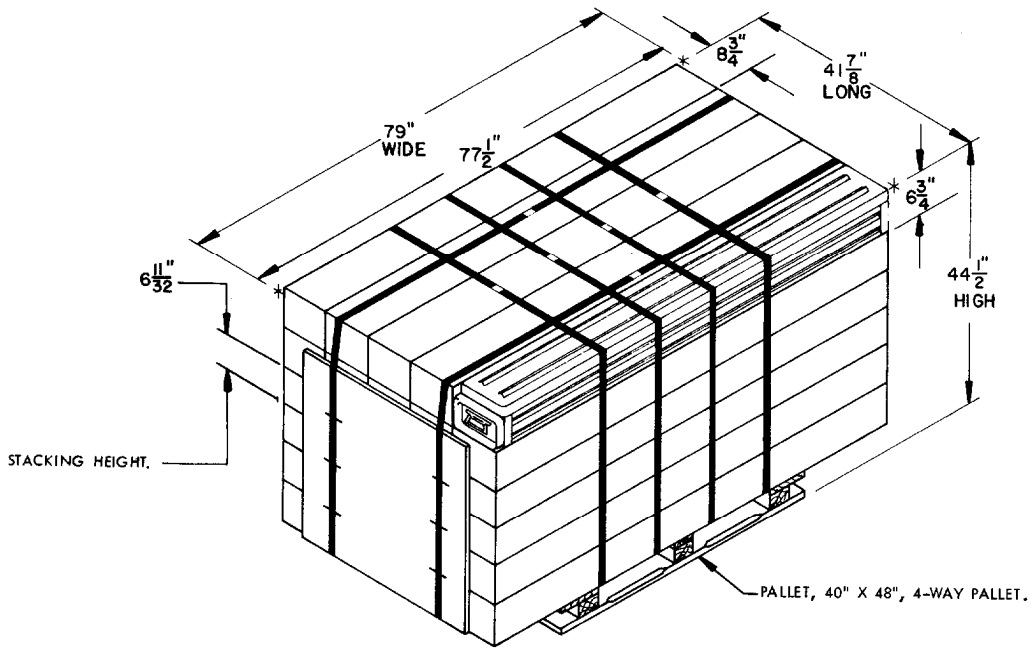
| <u>ITEM</u> | <u>PAGE (S)</u> |
|--|-----------------|
| GENERAL NOTES----- | 2 |
| DETAILS----- | 3 |
| <u>STORAGE PROCEDURES:</u> | |
| 81'-0", 60'-8" AND 40'-4" L X 26'-6" W X 12'-9" H IGLOO MAGAZINES----- | 4, 5 |
| 81'-2" L X 26'-6" W X 12'-1-3/4" H ARCH TYPE MAGAZINE (IGLOO)----- | 4, 5 |
| 80'-0" AND 40'-0" L X 25'-0" W X 12'-1-3/4" H ARCH TYPE MAGAZINES (IGLOO)----- | 6, 7 |
| 80'-0" AND 40'-0" L X 25'-0" W X 11'-0" H ARCH TYPE MAGAZINES (IGLOO)----- | 6, 7 |
| 80'-0" AND 40'-0" L X 25'-0" W X 10'-0" H ARCH TYPE MAGAZINES (IGLOO)----- | 6, 7 |
| 80'-0" L X 25'-0" W X 14'-0" H STRADLEY MAGAZINE----- | 8, 9 |
| 89'-0" L X 24'-10" W X 14'-4" H OVAL ARCH MAGAZINE----- | 8, 9 |
| 52'-0" DIAMETER CORBETTA MAGAZINE----- | 10, 11 |
| 100'-8" L X 50'-0" W RECTANGULAR MAGAZINE----- | 12, 13 |

| REVISIONS | | | | DRAFTSMAN <i>Dier</i> | PROJ ENG <i>8007/1200</i> |
|----------------------------------|----------|-------------|---------------------|---|------------------------------|
| | | | | CHECKER <i>GEG</i> | LOG ENGR <i>10/11/82</i> |
| | | | | APPROVED BY ORDER OF COMMANDING GENERAL, U. S. ARMY MATERIEL DEVELOPMENT AND READINESS COMMAND (DARCOM) <i>John L. ...</i> U. S. ARMY DEFENSE AMMUNITION CENTER AND SCHOOL | |
| U. S. ARMY DARCOM DRAWING | | | | | |
| MARCH 1982 | | | | | |
| CLASS | DIVISION | DRAWING | FILE | | |
| 19 | 48 | 7059 /3C | SP1-3-4 14-22J12 | | |

DO NOT SCALE

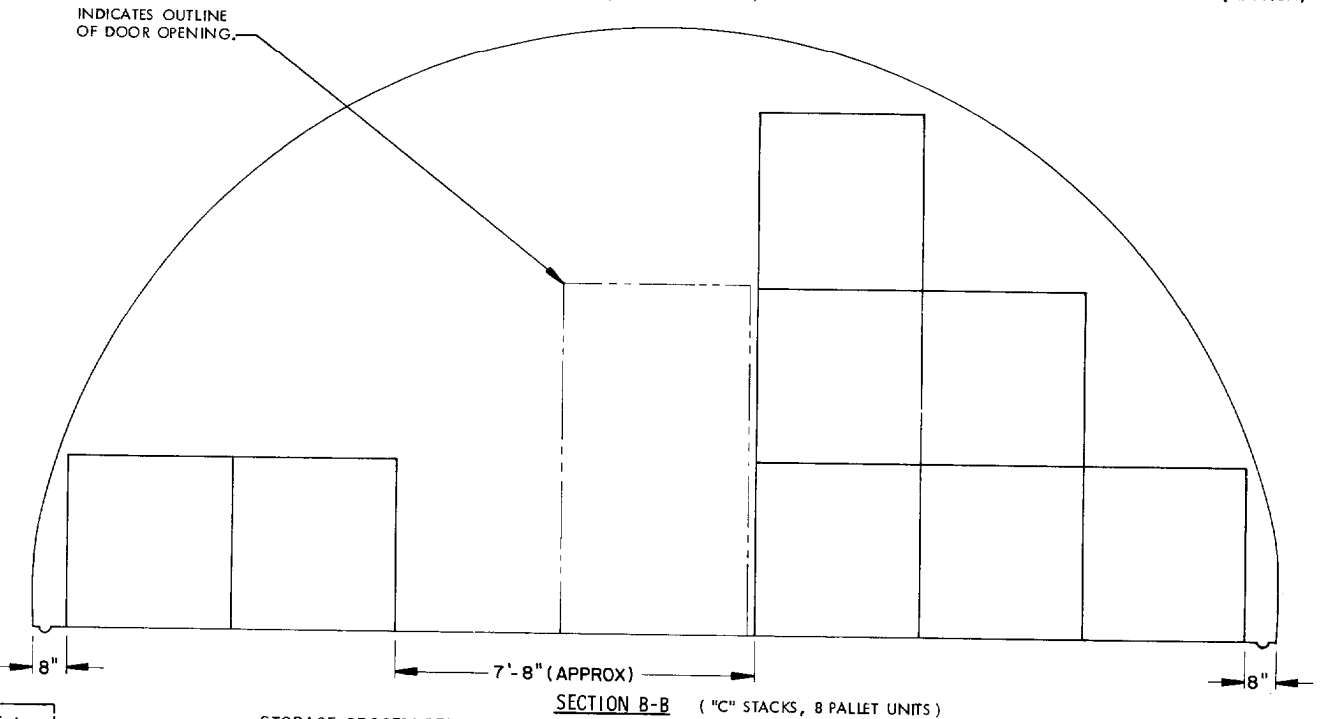
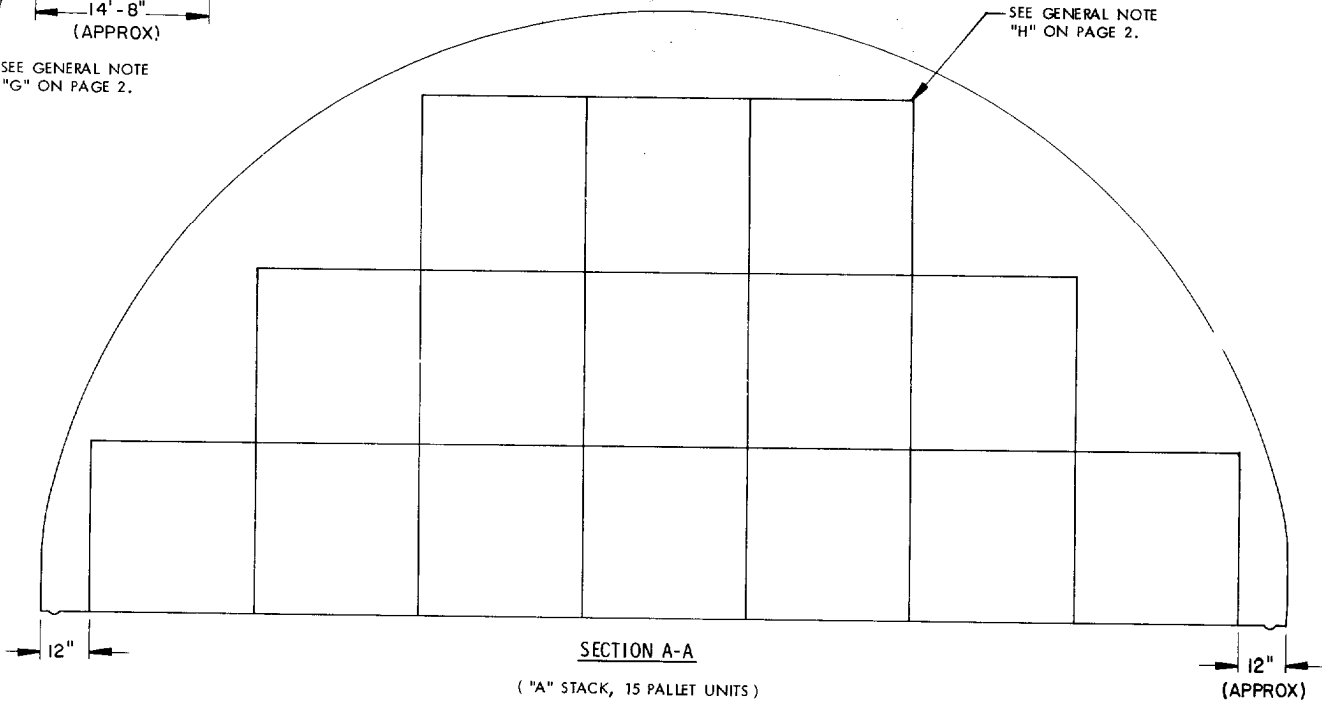
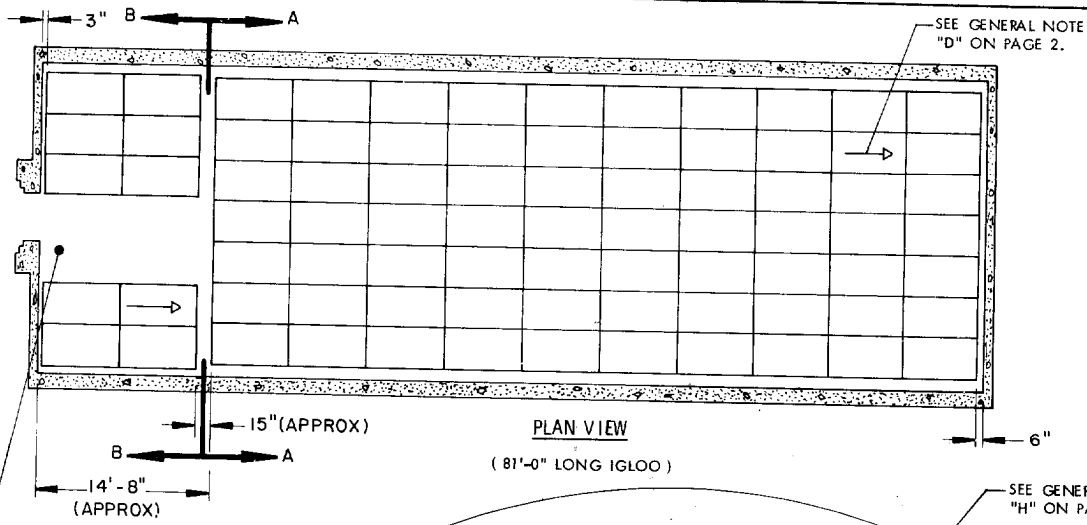
GENERAL NOTES

- A. THIS DOCUMENT HAS BEEN PREPARED AND ISSUED IN ACCORDANCE WITH AR 740-1, AND AUGMENTS TM 743-200-1, (CHAPTER 5).
- B. THE STORAGE PROCEDURES SPECIFIED IN THIS DRAWING ARE APPLICABLE TO THE ROCKET MOTOR, MK17 OR SR-116 (SIDEWINDER) PACKED ONE (1) PER METAL SHIPPING AND STORAGE CONTAINER, UNITIZED THIRTY (30) CONTAINERS PER 4-WAY ENTRY PALLET. SUBSEQUENT REFERENCE TO CONTAINER MEANS CONTAINER WITH CONTENTS. SUBSEQUENT REFERENCE TO PALLET UNIT MEANS THE PALLETIZED UNIT OF THIRTY (30) CONTAINERS WITH CONTENTS.
- C. FOR DETAILS OF THE PALLET UNIT, SEE US AIR FORCE DRAWING TPO 01-061-9508 AND PALLETIZED UNIT DETAIL ON PAGE 3.
- PALLET UNIT DIMENSIONS-----41-7/8" LONG X 79" WIDE X 44-1/2" HIGH.
GROSS WEIGHT-----3,745 POUNDS (APPROX).
CUBE-----85.19 CUBIC FEET (APPROX).
- D. FOR QUANTITY DISTANCE AND COMPATIBILITY GROUP OF THIS ITEM, SEE T.O. 11A-1-46. **CAUTION:** THIS ITEM IS IN A "PROPULSIVE STATE" AND MUST BE STORED WITH THE FORWARD END FACING TOWARD ONE SIDE WALL AND/OR THE REAR WALL AS INDICATED BY THE DIRECTIONAL ARROWS ON THE STORAGE VIEWS.
- E. THE STORAGE PROCEDURES DEPICTED WITHIN THIS DOCUMENT ARE APPLICABLE FOR STORAGE IN VARIOUS TYPES AND SIZES OF MAGAZINES. THE STORAGE PROCEDURES DEPICTED FOR THE SPECIFIC TYPES OF MAGAZINES MAY ALSO BE UTILIZED TO STORE PALLET UNITS IN OTHER TYPES OF APPROVED MAGAZINES. MINOR ADJUSTMENTS MAY BE MADE TO FACILITATE STORAGE IN OTHER TYPES OF MAGAZINES, HOWEVER, THE BASIC PRINCIPLES AS DEPICTED HEREIN WILL BE FOLLOWED.
- F. AISLE DIMENSIONS AS SHOWN HEREIN MAY BE ADJUSTED TO SUIT LOCAL CONDITIONS AND/OR AVAILABLE MATERIAL HANDLING EQUIPMENT (MHE).
- G. IF AVAILABLE MHE PERMITS, ADDITIONAL PALLET UNITS MAY BE STORED WITHIN THE FRONTAL AREA AND/OR OTHER AVAILABLE AREA OF THE MAGAZINE.
- H. STORED PALLET UNITS MUST NOT CONTACT THE WALLS OF A MAGAZINE. TO PROVIDE FOR THIS MANDATORY CLEARANCE REQUIREMENT, PALLET UNITS MAY BE ELIMINATED FROM THE DEPICTED STORAGE PATTERN AS NECESSARY.
- J. OTHER COMPATIBLE ITEMS MAY BE STORED IN A MAGAZINE WHICH IS PARTIALLY FILLED WITH THE DESIGNATED ITEM.
- K. PORTIONS OF THE MAGAZINES, SUCH AS THE SIDEWALLS, END WALLS, AND ROOFS, HAVE NOT BEEN SHOWN IN THE STORAGE VIEWS FOR CLARITY PURPOSES.
- L. IF THE QUANTITY OF PALLET UNITS FOR A MAGAZINE IS TO BE REDUCED FROM WHAT IS SHOWN HEREIN, THE DELINEATED PROCEDURES ARE TO BE ADJUSTED BY OMITTING STACKS RATHER THAN BY OMITTING LAYERS.
- M. ANY PALLET UNIT THAT DOES NOT CONSIST OF A FULL QUANTITY OF CONTAINERS WILL NOT BE BURIED IN STORAGE. IT MUST BE POSITIONED ADJACENT TO AN AISLE, PREFERABLY IN FRONT OF THE LOT.
- N. FOR ADDITIONAL GUIDANCE, ATTENTION IS DIRECTED TO THE "SPECIAL NOTES" SECTION WHICH ARE IMMEDIATELY ADJACENT TO THE DEPICTED STORAGE METHODS.
- O. **CAUTION:** THE ALLOWABLE "EXPLOSIVE LIMIT" ESTABLISHED FOR A MAGAZINE IS NOT TO BE EXCEEDED. THIS LIMITATION MAY REQUIRE A QUANTITY REDUCTION FROM THE STORAGE AS SHOWN.
- P. USE FORK TINE EXTENSIONS AND A FORKLIFT OF SUFFICIENT CAPACITY TO END HANDLE THE PALLET LOAD.



PALLETIZED UNIT OF THIRTY (30) ROCKET MOTORS
PACKED ONE (1) PER METAL CONTAINER

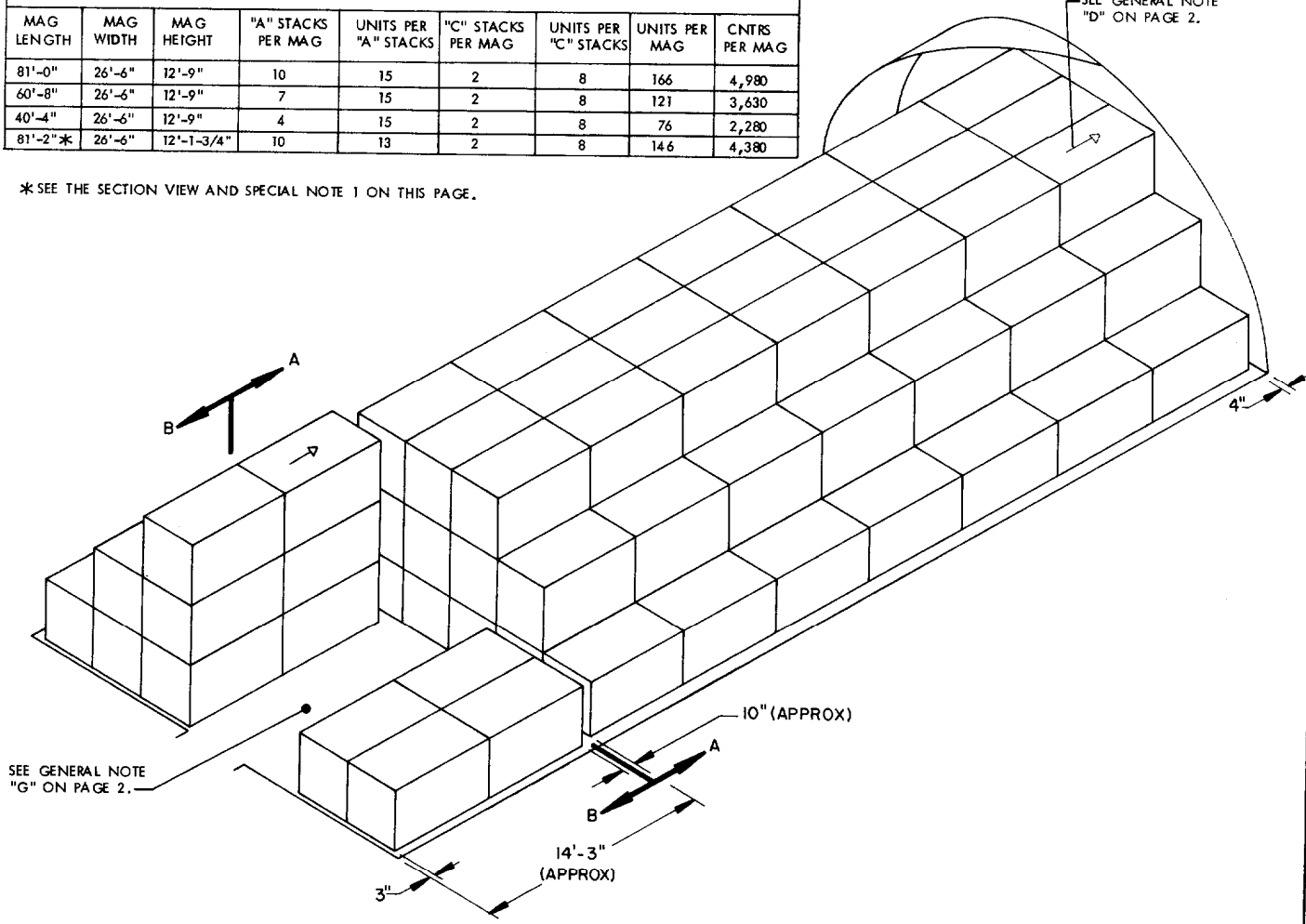
SEE GENERAL NOTES "B", "C" AND "D" ON PAGE 2.



| MAGAZINE STORAGE CHART | | | | | | | | |
|------------------------|-----------|------------|--------------------|----------------------|--------------------|----------------------|---------------|---------------|
| MAG LENGTH | MAG WIDTH | MAG HEIGHT | "A" STACKS PER MAG | UNITS PER "A" STACKS | "C" STACKS PER MAG | UNITS PER "C" STACKS | UNITS PER MAG | CNTRS PER MAG |
| 81'-0" | 26'-6" | 12'-9" | 10 | 15 | 2 | 8 | 166 | 4,980 |
| 60'-8" | 26'-6" | 12'-9" | 7 | 15 | 2 | 8 | 121 | 3,630 |
| 40'-4" | 26'-6" | 12'-9" | 4 | 15 | 2 | 8 | 76 | 2,280 |
| 81'-2"* | 26'-6" | 12'-1-3/4" | 10 | 13 | 2 | 8 | 146 | 4,380 |

SEE GENERAL NOTE "D" ON PAGE 2.

* SEE THE SECTION VIEW AND SPECIAL NOTE 1 ON THIS PAGE.

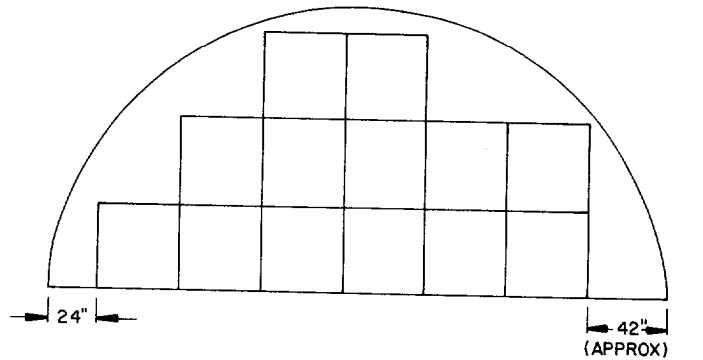


ISOMETRIC VIEW
(60'-8" LONG IGLOO)

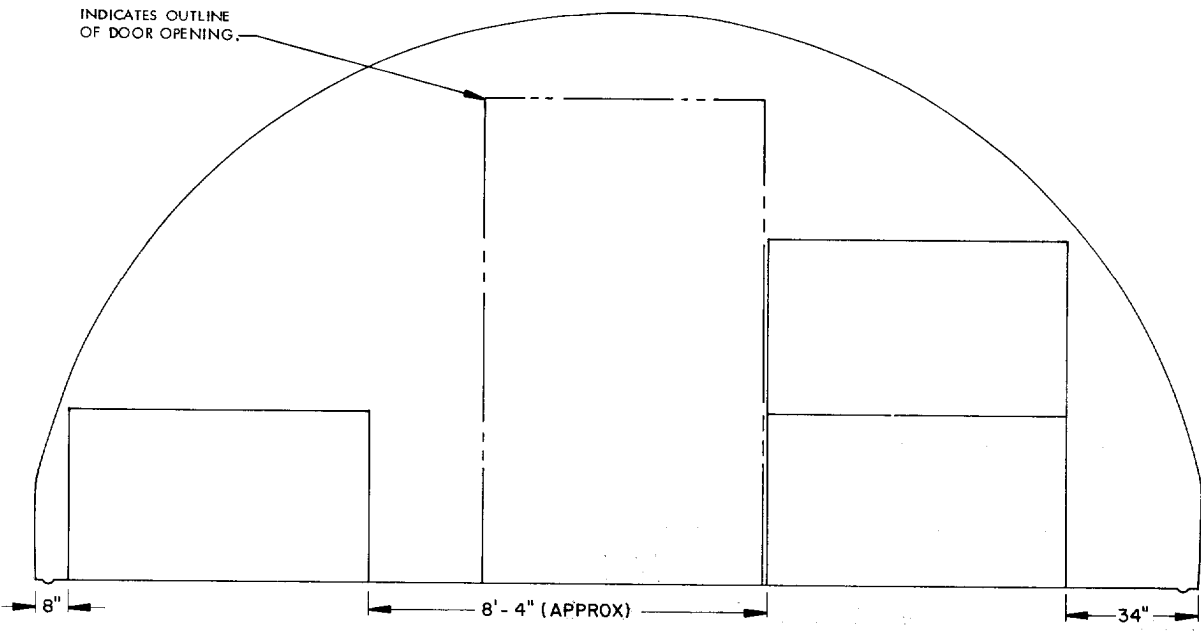
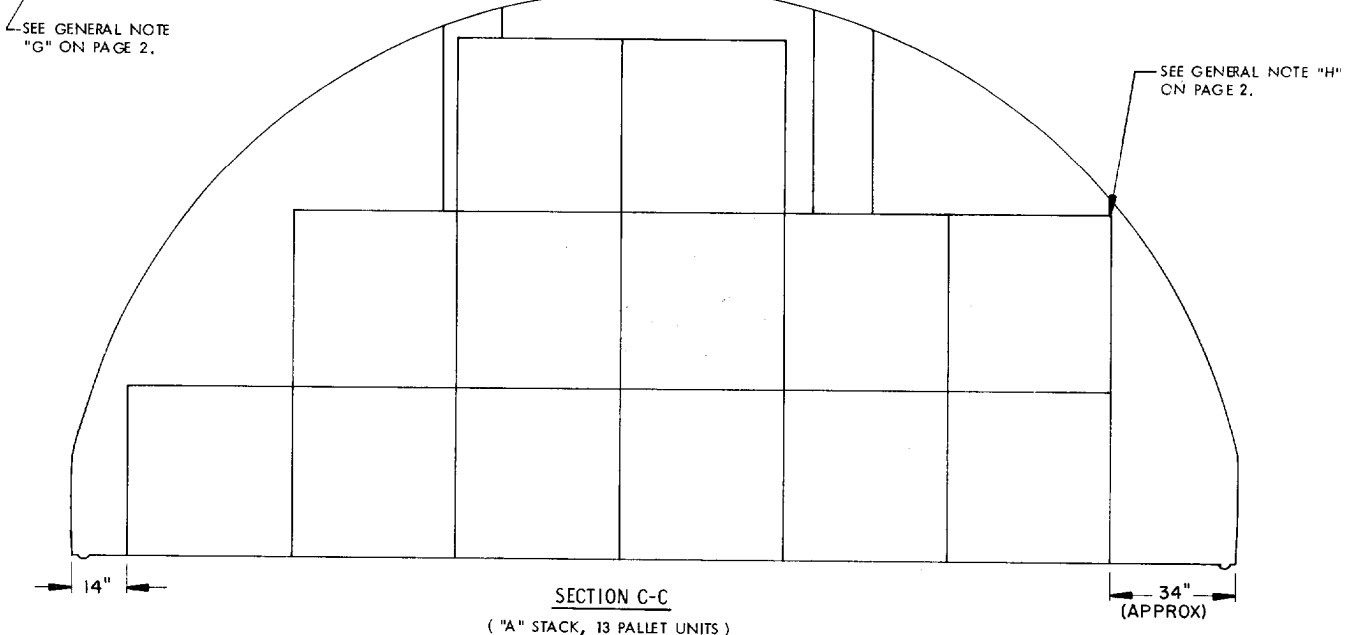
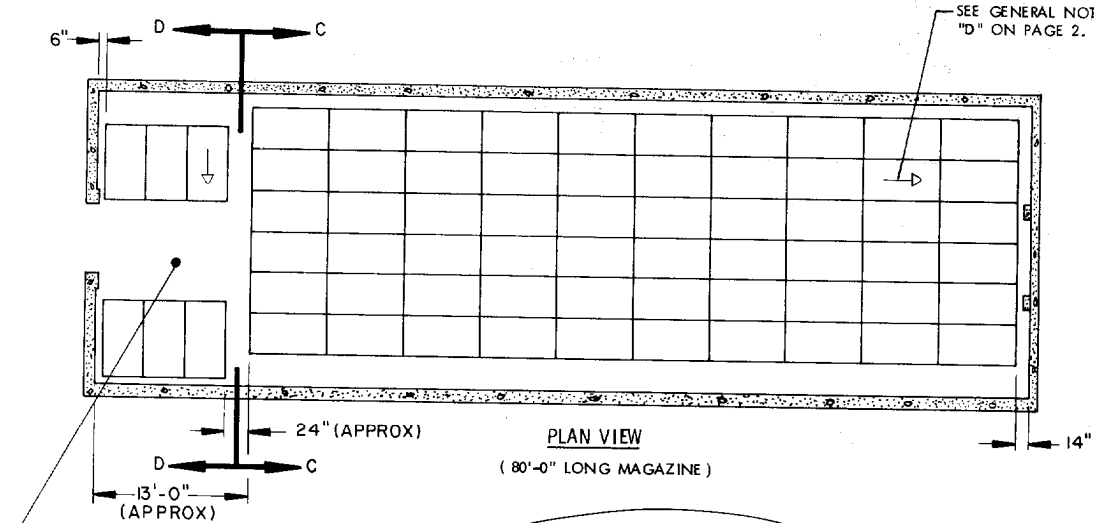
SPECIAL NOTE:

1. THE STORAGE PROCEDURES SHOWN IN THE "PLAN VIEW" ON PAGE 4 ARE FOR AN 81'-0" LONG IGLOO. THE STORAGE PROCEDURES SHOWN IN THE "ISOMETRIC VIEW" ON THIS PAGE ARE FOR A 60'-8" LONG IGLOO. FOR STORAGE IN A 40'-0" LONG IGLOO, SEE THE "MAGAZINE STORAGE CHART" ON THIS PAGE. FOR STORAGE IN A 81'-2" LONG ARCH TYPE MAGAZINE, SEE THE "MAGAZINE STORAGE CHART" AND THE "SECTION VIEW" ON THIS PAGE.

FOR "GENERAL NOTES", SEE PAGE 2.

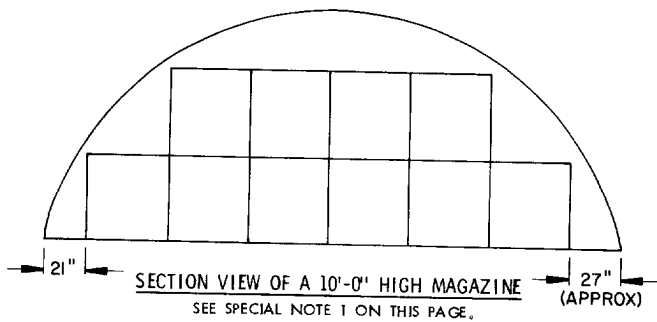
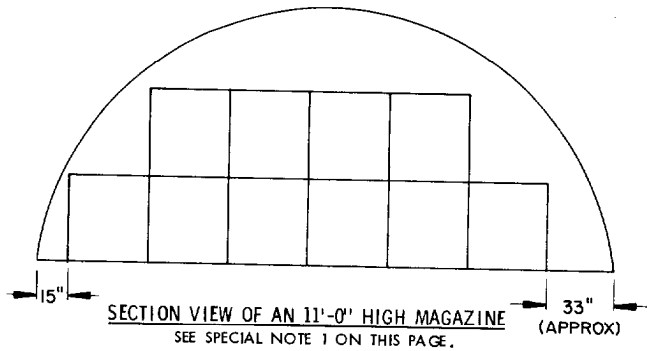
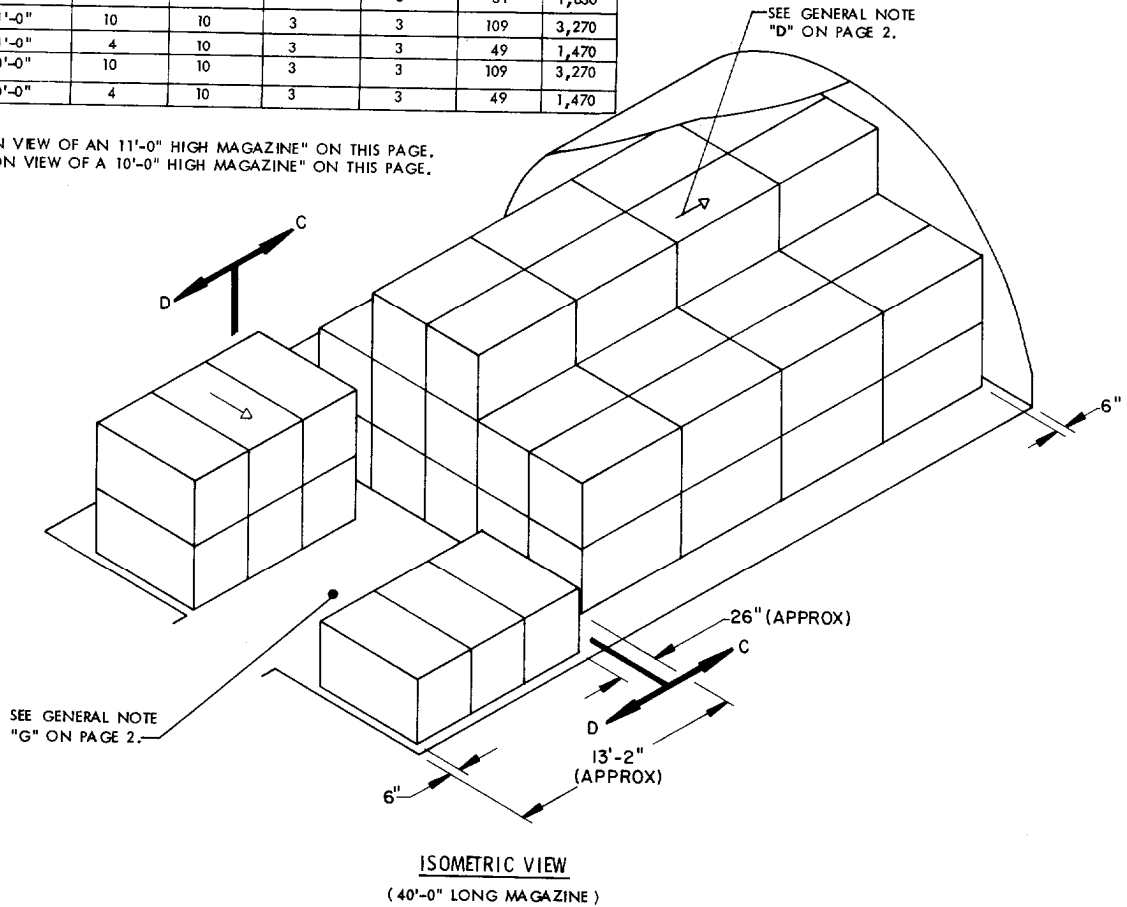


SECTION VIEW OF AN 81'-2" LONG X 26'-6" WIDE X 12'-1-3/4" HIGH MAGAZINE



| MAGAZINE STORAGE CHART | | | | | | | | |
|------------------------|-----------|------------|--------------------|----------------------|--------------------|----------------------|---------------|---------------|
| MAG LENGTH | MAG WIDTH | MAG HEIGHT | "A" STACKS PER MAG | UNITS PER "A" STACKS | "C" STACKS PER MAG | UNITS PER "C" STACKS | UNITS PER MAG | CNTRS PER MAG |
| 80'-0" | 25'-0" | 12'-1-3/4" | 10 | 13 | 3 | 3 | 139 | 4,170 |
| 40'-0" | 25'-0" | 12'-1-3/4" | 4 | 13 | 3 | 3 | 61 | 1,830 |
| 80'-0"* | 25'-0" | 11'-0" | 10 | 10 | 3 | 3 | 109 | 3,270 |
| 40'-0" | 25'-0" | 11'-0" | 4 | 10 | 3 | 3 | 49 | 1,470 |
| 80'-0"* | 25'-0" | 10'-0" | 10 | 10 | 3 | 3 | 109 | 3,270 |
| 40'-0" | 25'-0" | 10'-0" | 4 | 10 | 3 | 3 | 49 | 1,470 |

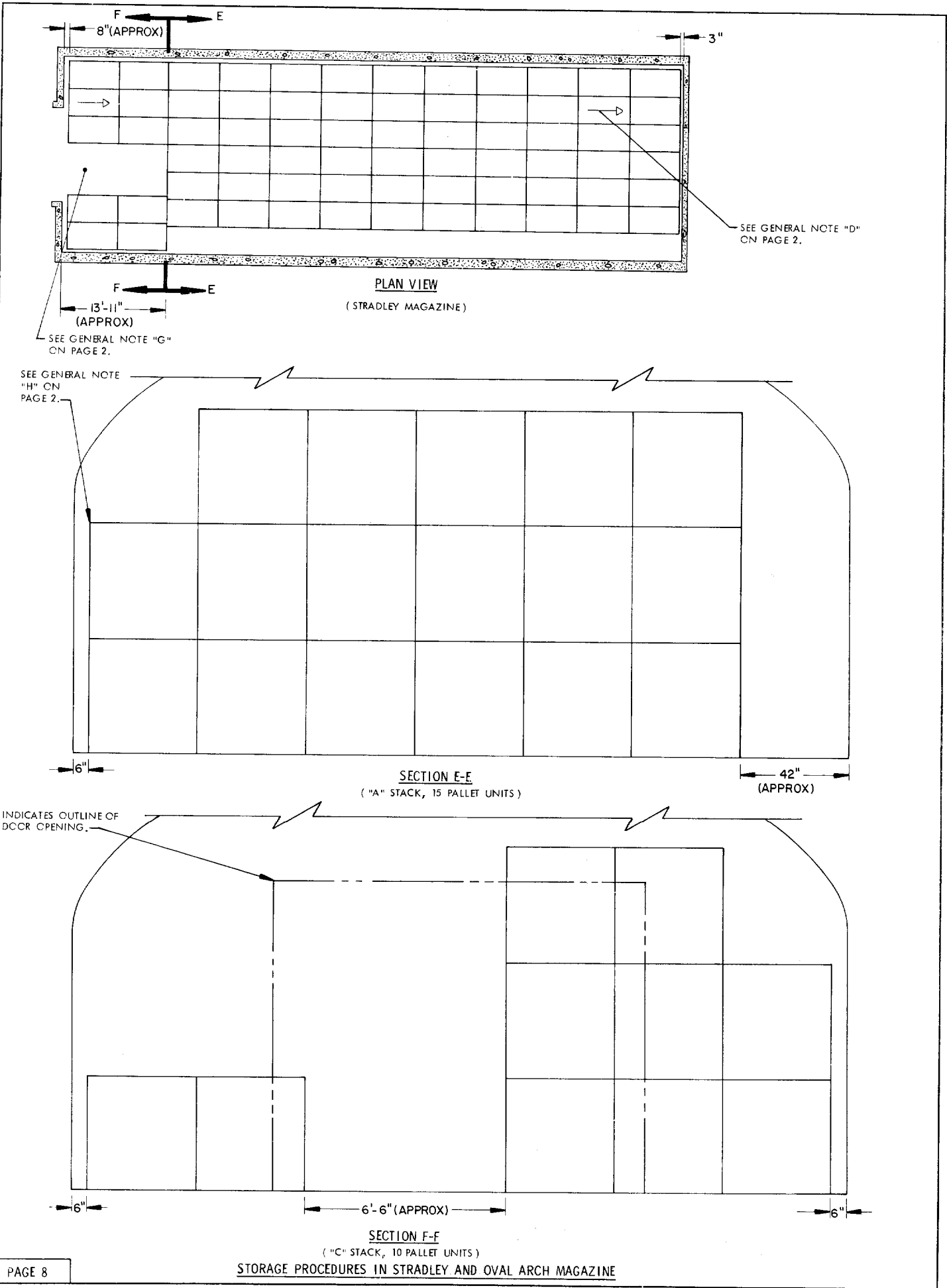
* SEE "SECTION VIEW OF AN 11'-0" HIGH MAGAZINE" ON THIS PAGE.
 ** SEE "SECTION VIEW OF A 10'-0" HIGH MAGAZINE" ON THIS PAGE.



SPECIAL NOTE:

1. THE STORAGE PROCEDURES SHOWN IN THE "PLAN VIEW" ON PAGE 6 ARE FOR AN 80'-0" LONG BY 25'-0" WIDE BY 12'-1-3/4" HIGH ARCH TYPE MAGAZINE. THE STORAGE PROCEDURES SHOWN IN THE "ISOMETRIC VIEW" ON THIS PAGE ARE FOR A 40'-0" LONG BY 25'-0" WIDE BY 12'-1-3/4" HIGH ARCH TYPE MAGAZINE. FOR STORAGE IN AN 80'-0" LONG BY 25'-0" WIDE BY 11'-0" HIGH AND/OR A 40'-0" LONG BY 25'-0" WIDE BY 11'-0" HIGH ARCH TYPE MAGAZINE, SEE THE "MAGAZINE STORAGE CHART" AND THE "SECTION VIEW OF AN 11'-0" HIGH MAGAZINE" ON THIS PAGE. FOR STORAGE IN AN 80'-0" LONG BY 25'-0" WIDE BY 10'-0" HIGH ARCH TYPE MAGAZINE, SEE THE "MAGAZINE STORAGE CHART" AND THE "SECTION VIEW ON A 10'-0" HIGH MAGAZINE" ON THIS PAGE.

FOR "GENERAL NOTES", SEE PAGE 2.

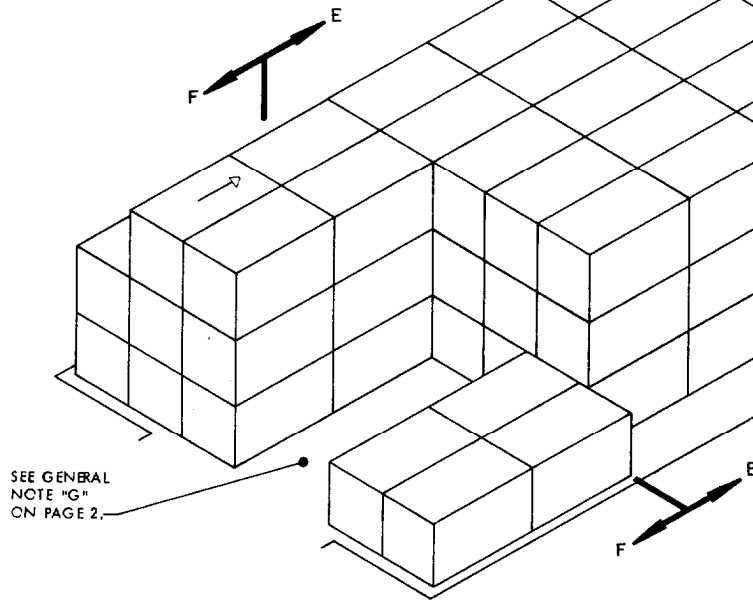


MAGAZINE STORAGE CHART

| MAG LENGTH | MAG WIDTH | MAG HEIGHT | "A" STACKS PER MAG | UNITS PER "A" STACK | "B" STACKS PER MAG | UNITS PER "B" STACK | UNIT PER MAG | CNTRS PER MAG |
|------------|-----------|------------|--------------------|---------------------|--------------------|---------------------|--------------|---------------|
| 80'-0" | 25'-0" | 14'-0" | 10 | 15 | 2 | 10 | 170 | 5,100 |
| 89'-0"* | 24'-10" | 14'-4" | 11 | 15 | 2 | 10 | 185 | 5,540 |

SEE GENERAL NOTE "D" ON PAGE 2.

* SEE SPECIAL NOTE 1 ON THIS PAGE.

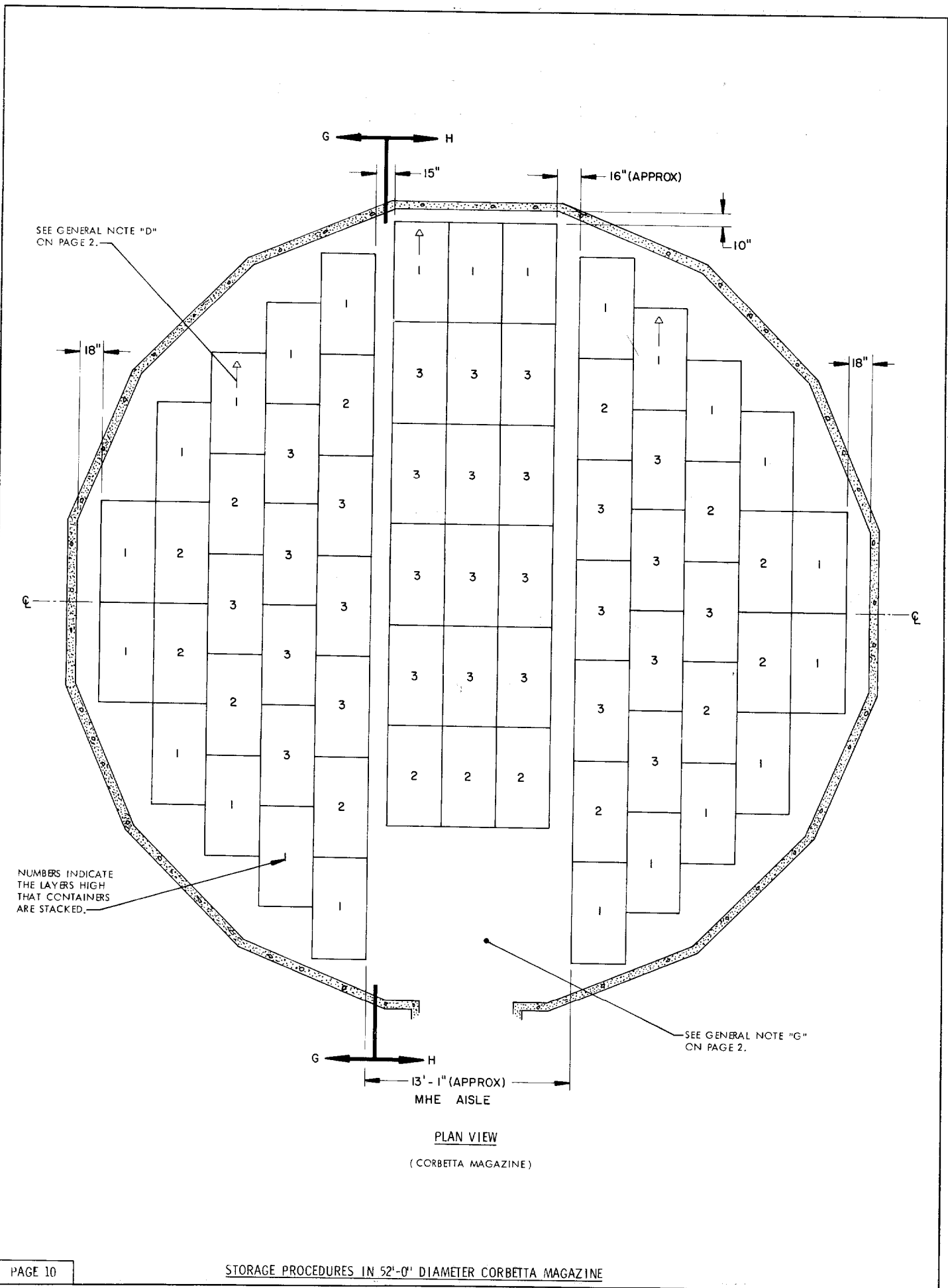


ISOMETRIC VIEW
(STRADLEY MAGAZINE)

SPECIAL NOTE:

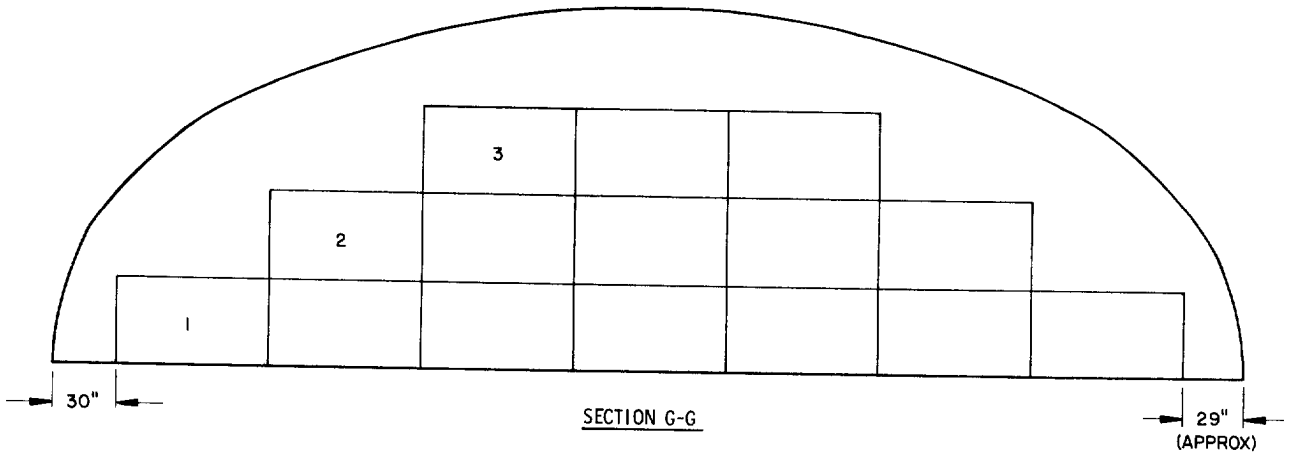
1. THE STORAGE PROCEDURES SHOWN IN THE "PLAN VIEW" ON PAGE 8 AND THE "ISOMETRIC VIEW" ON THIS PAGE ARE FOR THE STRADLEY MAGAZINE. FOR STORAGE IN OVAL ARCH MAGAZINES, SEE THE "MAGAZINE STORAGE CHART" ON THIS PAGE.

FOR "GENERAL NOTES", SEE PAGE 2.



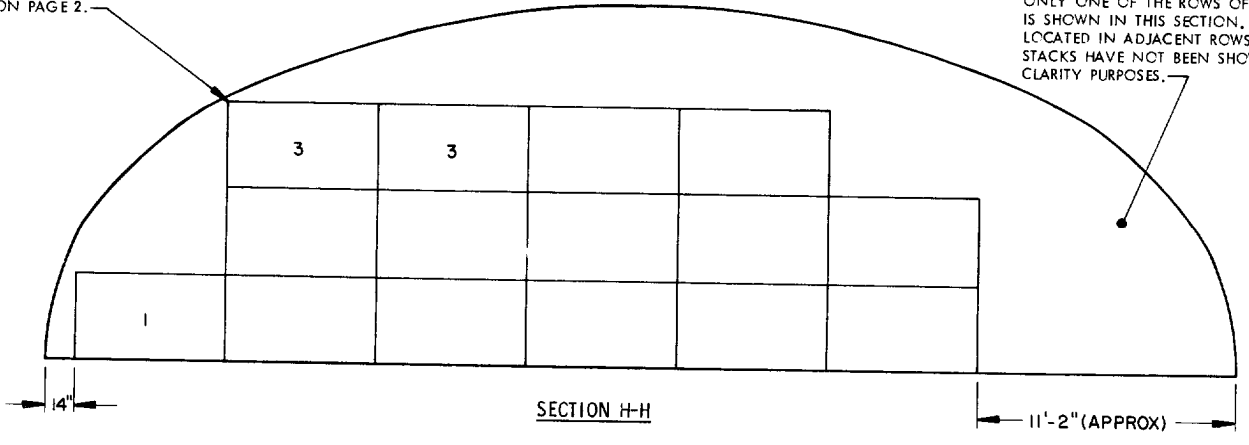
STORAGE IN 52'-0" DIAMETER CORBETTA MAGAZINE

| <u>ITEM</u> | <u>QUANTITY</u> |
|-----------------------|-----------------|
| PALLETIZED UNITS----- | 137 |
| CONTAINERS----- | 4,110 |

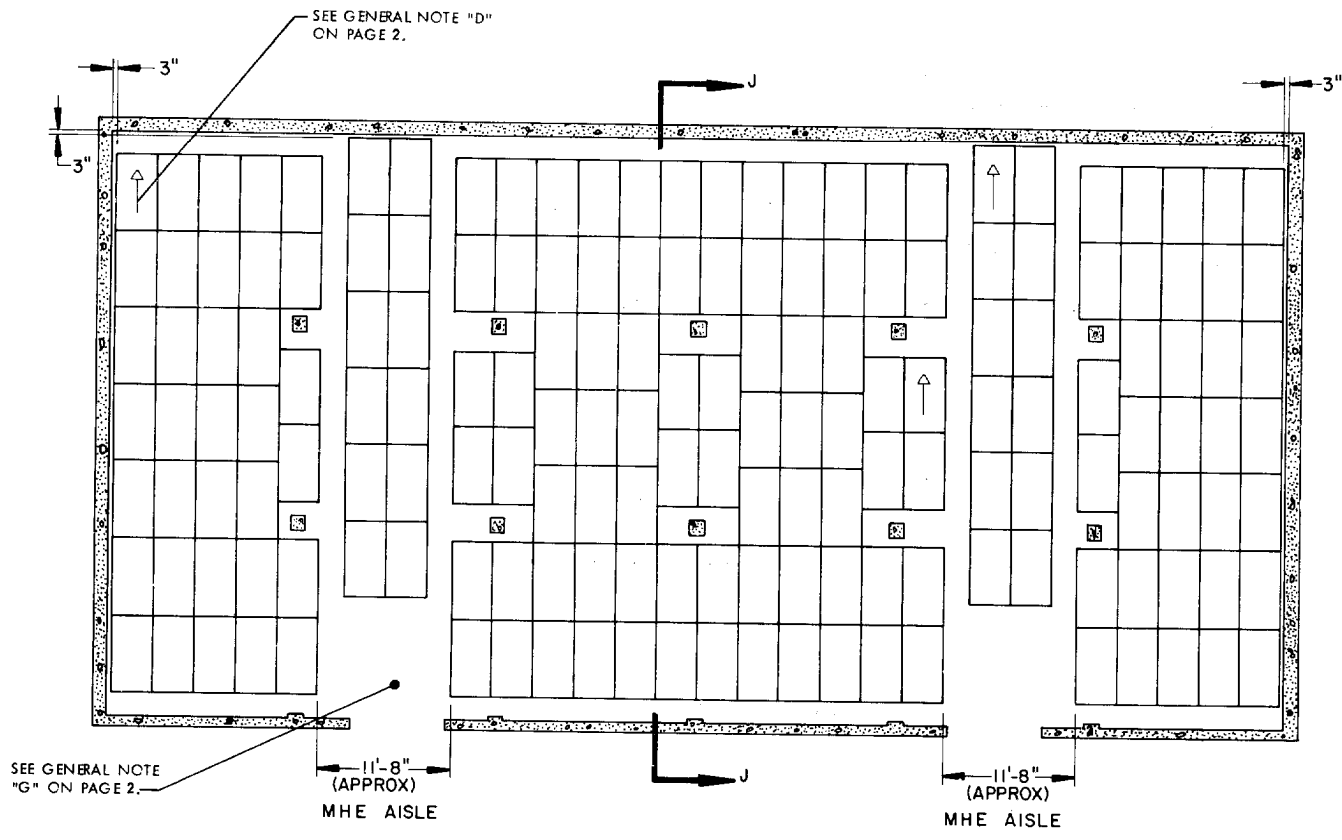


SEE GENERAL NOTE "H" ON PAGE 2.

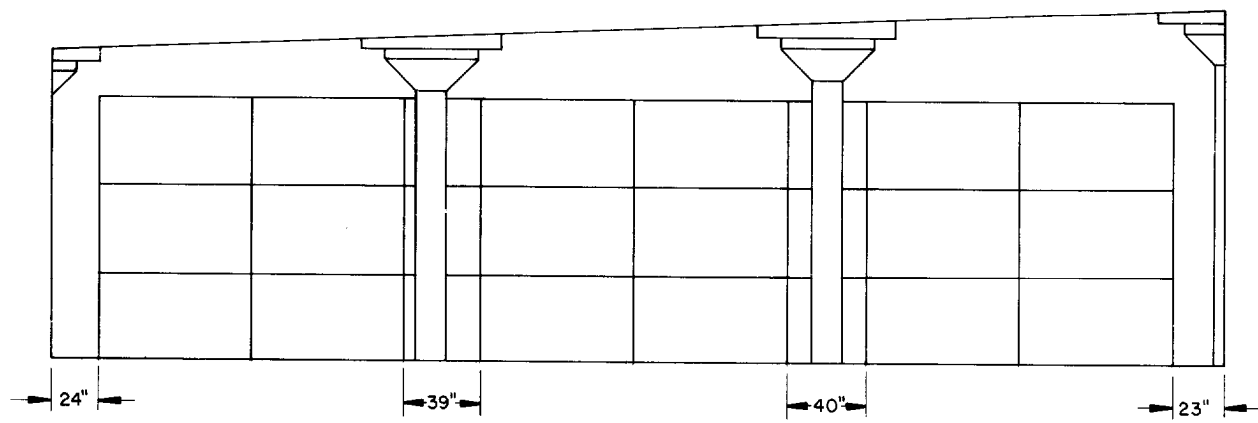
ONLY ONE OF THE ROWS OF CONTAINERS IS SHOWN IN THIS SECTION. UNITS LOCATED IN ADJACENT ROWS OR STACKS HAVE NOT BEEN SHOWN FOR CLARITY PURPOSES.



FOR "GENERAL NOTES", SEE PAGE 2.



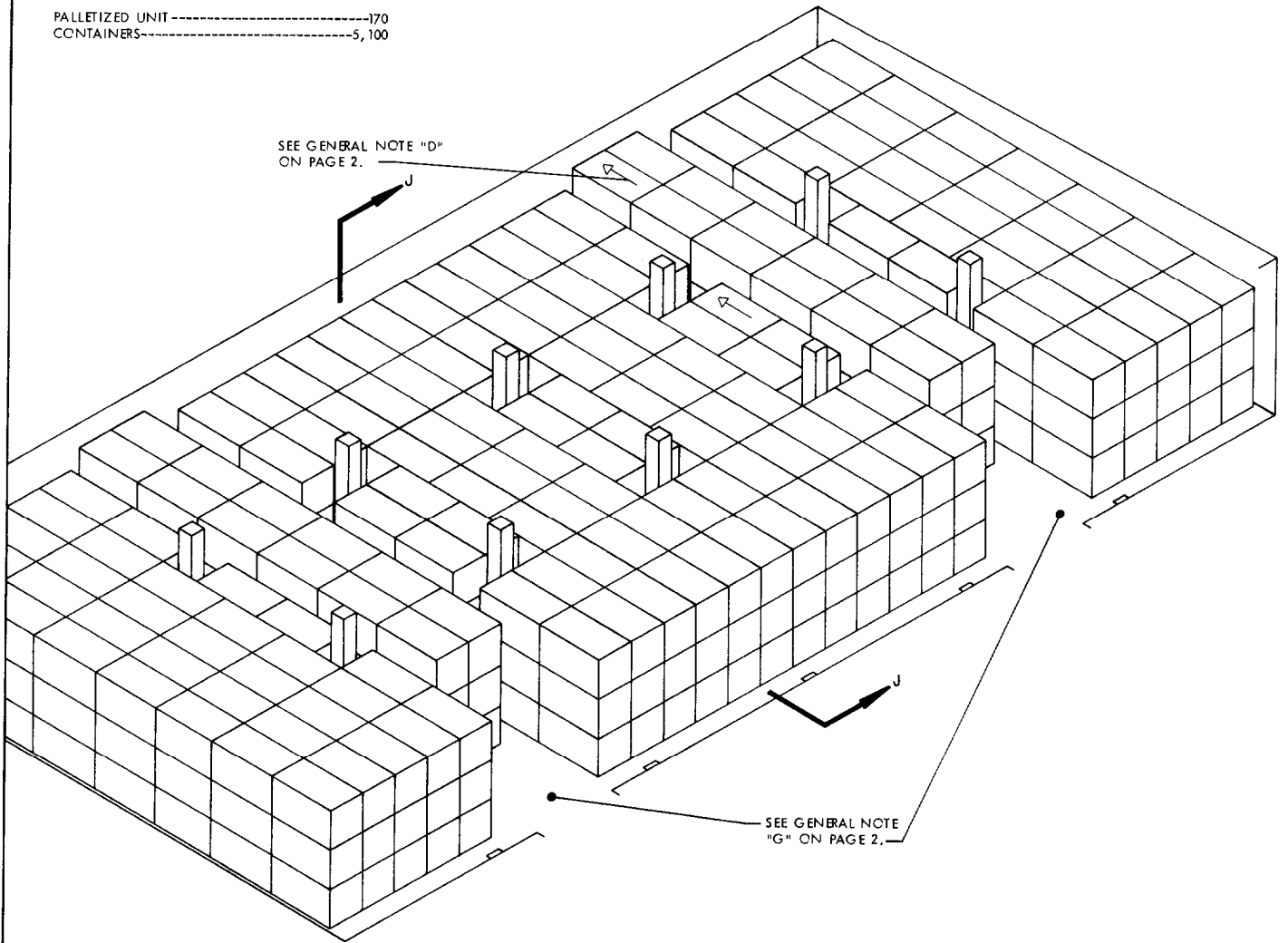
PLAN VIEW
 (100'-8" L X 50'-0" W MAGAZINE)



SECTION J-J

STORAGE IN 100'-8" L X 50'-0" W RECTANGULAR MAGAZINE

| <u>ITEM</u> | <u>QUANTITY</u> |
|----------------------|-----------------|
| PALLETIZED UNIT----- | 170 |
| CONTAINERS----- | 5,100 |



ISOMETRIC VIEW
(100'-0" LONG X 50'-0" WIDE MAGAZINE)