

STORAGE IN 60' & 80' IGLOO AND 80' STRADLEY MAGAZINES OF CBU ITEMS PACKED IN THE CNU-105/E CONTAINER

INDEX

ITEM	PAGE(S)
GENERAL NOTES, AND MATERIAL SPECIFICATIONS-----	3
IGLOO STORAGE PROCEDURES-----	2,3
STRADLEY STORAGE PROCEDURES-----	4,5
DETAILS-----	6

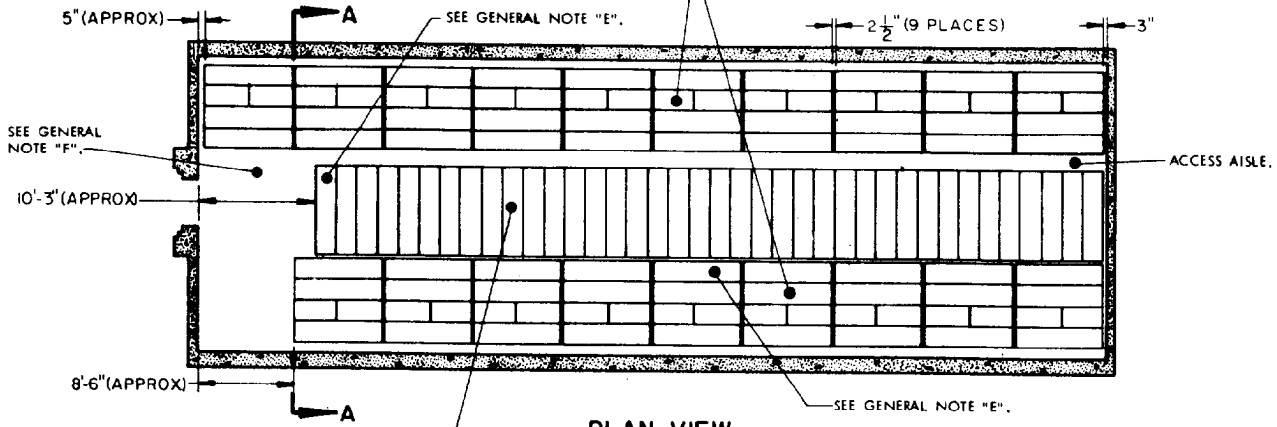
DRAFTSMAN BJL	PROJ ENG GWP/luw	APPR ENG/ABP	SUBMITTED WR Harding Col.
CHECKER JL/RKH	ARC ARMO CTR JB		COMMANDING OFFICER (VALUABLE ARMY DEPOT)
REVISIONS			EXAMINED AND APPROVED Ralph Hall
			ARMAMUNITION PROCUREMENT & SUPPLY AGENCY
			APPROVED BY ORDER OF COMMANDING GENERAL U. S. ARMY MATERIEL COMMAND
			JP
			U. S. ARMY MATERIEL COMMAND
			JUNE 1968
			CLASS DIVISION DRAWING FILE
			19 48 7045 SP14A4

DO NOT SCALE

**STORAGE AS SHOWN
80' IGLOO**

ITEM	QUANTITY
CNU-105/E CONTAINER (W/CBU ITEM)	437

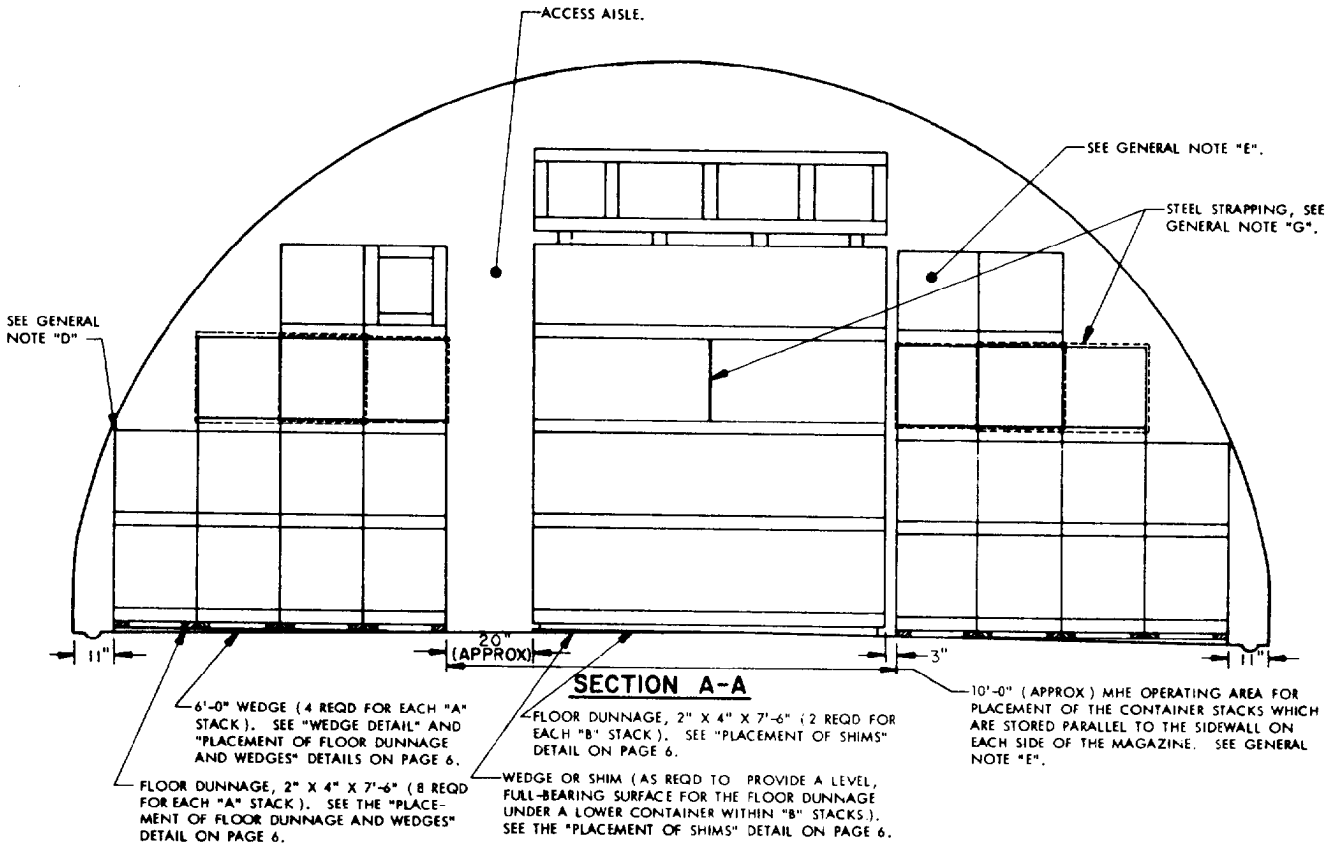
CONTAINER STACKS STORED ALONG BOTH SIDES OF THE IGLOO MAGAZINE WILL BE IDENTIFIED HEREIN AS "A" STACKS (13 CONTAINERS PER STACK).



PLAN VIEW

(80' IGLOO)

THE THIRTY-EIGHT (38) 5-HIGH CONTAINER STACKS STORED CROSSWISE IN THE IGLOO MAGAZINE WILL BE IDENTIFIED AS "B" STACKS.



SECTION A-A

6'-0" WEDGE (4 REQD FOR EACH "A" STACK). SEE "WEDGE DETAIL" AND "PLACEMENT OF FLOOR DUNNAGE AND WEDGES" DETAILS ON PAGE 6.

FLOOR DUNNAGE, 2" X 4" X 7'-6" (8 REQD FOR EACH "A" STACK). SEE THE "PLACEMENT OF FLOOR DUNNAGE AND WEDGES" DETAIL ON PAGE 6.

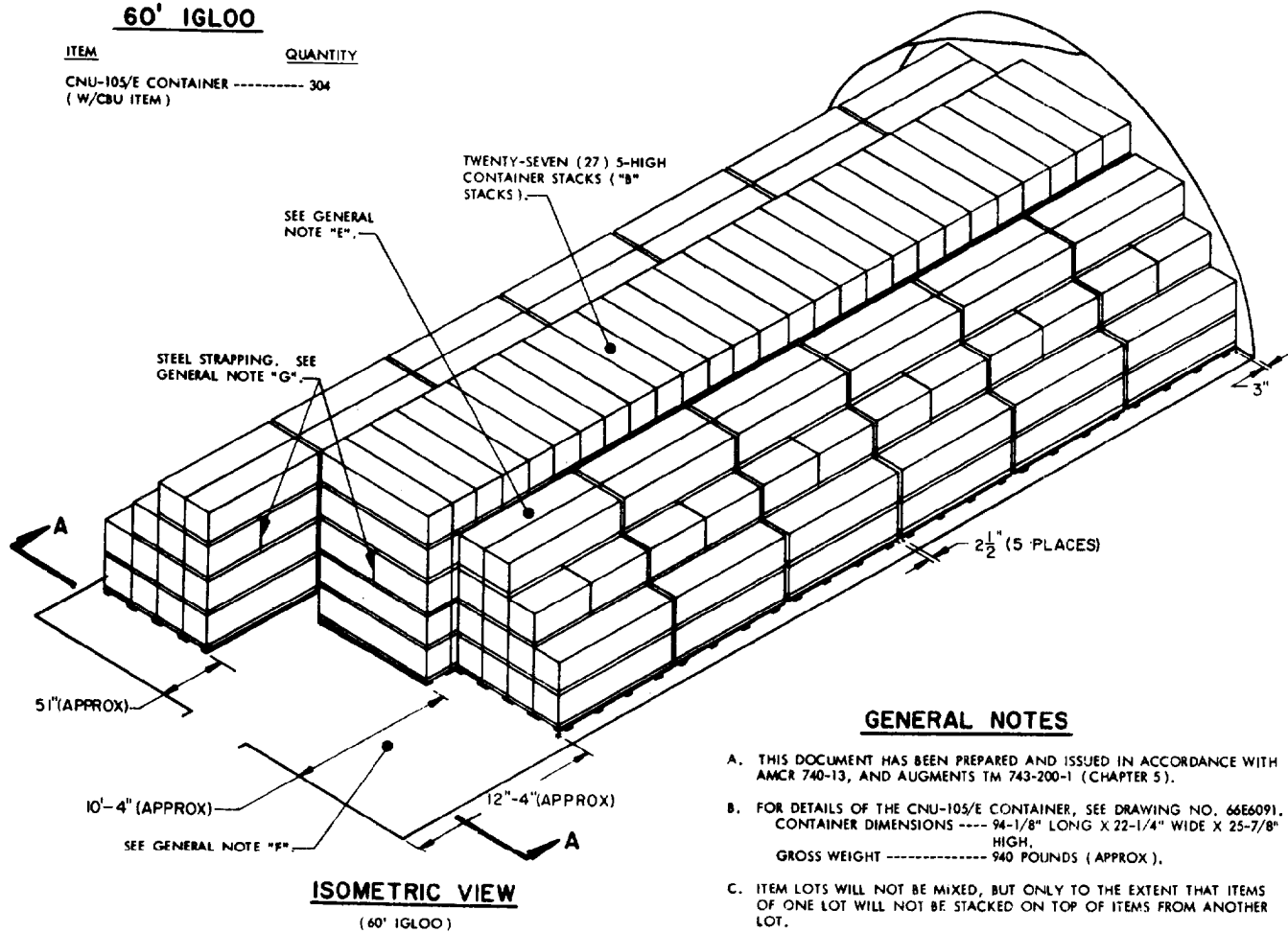
WEDGE OR SHIM (AS REQD TO PROVIDE A LEVEL, FULL-BEARING SURFACE FOR THE FLOOR DUNNAGE UNDER A LOWER CONTAINER WITHIN "B" STACKS). SEE THE "PLACEMENT OF SHIMS" DETAIL ON PAGE 6.

FLOOR DUNNAGE, 2" X 4" X 7'-6" (2 REQD FOR EACH "B" STACK). SEE "PLACEMENT OF SHIMS" DETAIL ON PAGE 6.

10'-0" (APPROX) MHE OPERATING AREA FOR PLACEMENT OF THE CONTAINER STACKS WHICH ARE STORED PARALLEL TO THE SIDEWALL ON EACH SIDE OF THE MAGAZINE. SEE GENERAL NOTE "E".

STORAGE AS SHOWN
60' IGLOO

ITEM	QUANTITY
CNU-105/E CONTAINER -----	304
(W/CBU ITEM)	



ISOMETRIC VIEW
(60' IGLOO)

BILL OF MATERIAL PER STACK				
STACK*	LUMBER			6'-0" WEDGES
	QUANTITY	SIZE	LINEAR FEET	
"A"	8	2" X 4" X 7'-6"	60	4
"B"	2	2" X 4" X 7'-6"	15	(SHIMS)

*SEE "PLAN VIEW" FOR IDENTIFICATION OF STACKS.

MATERIAL SPECIFICATIONS

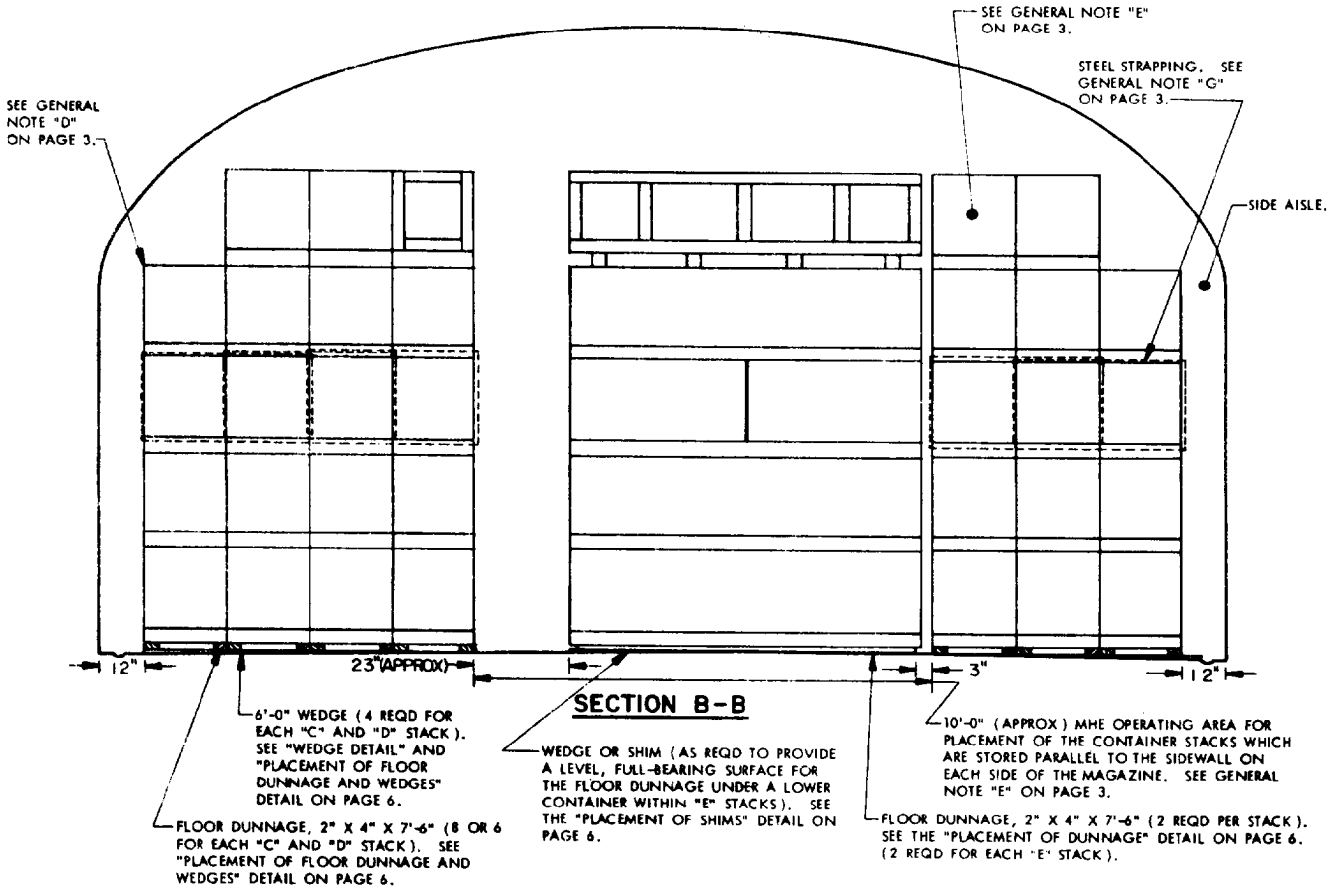
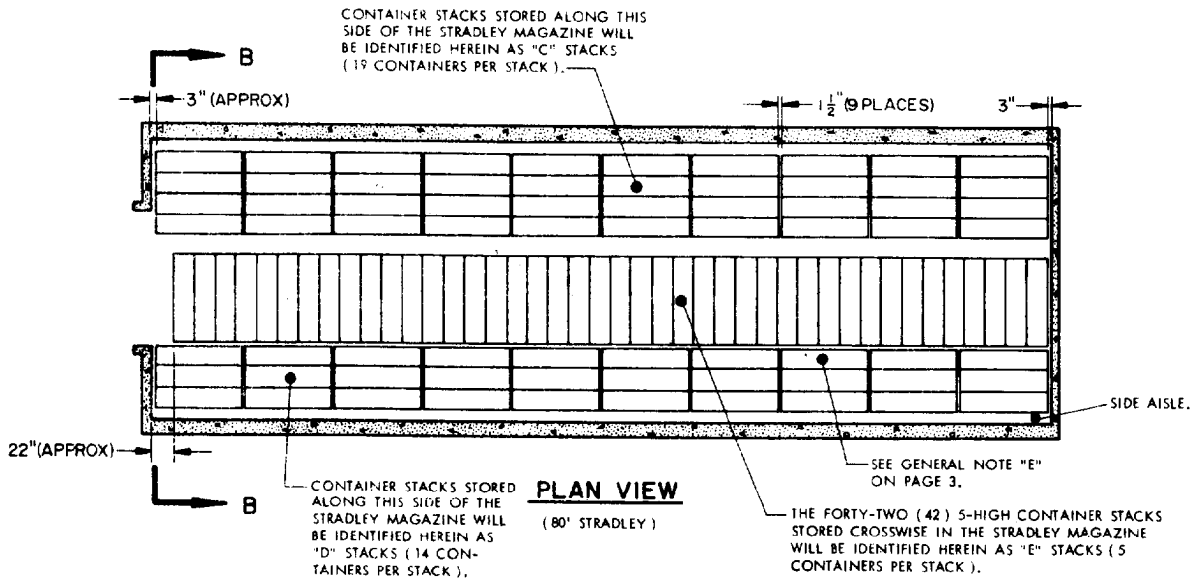
LUMBER ----- : SEE TM 715-5500-1, DUNNAGE LUMBER; FED SPEC MM-L-751.

STEEL STRAPPING: TYPE I OR IV, CLASS A OR B, FED SPEC QQ-S-781.

STRAP SEAL ---- : COMMERCIAL GRADE.

GENERAL NOTES

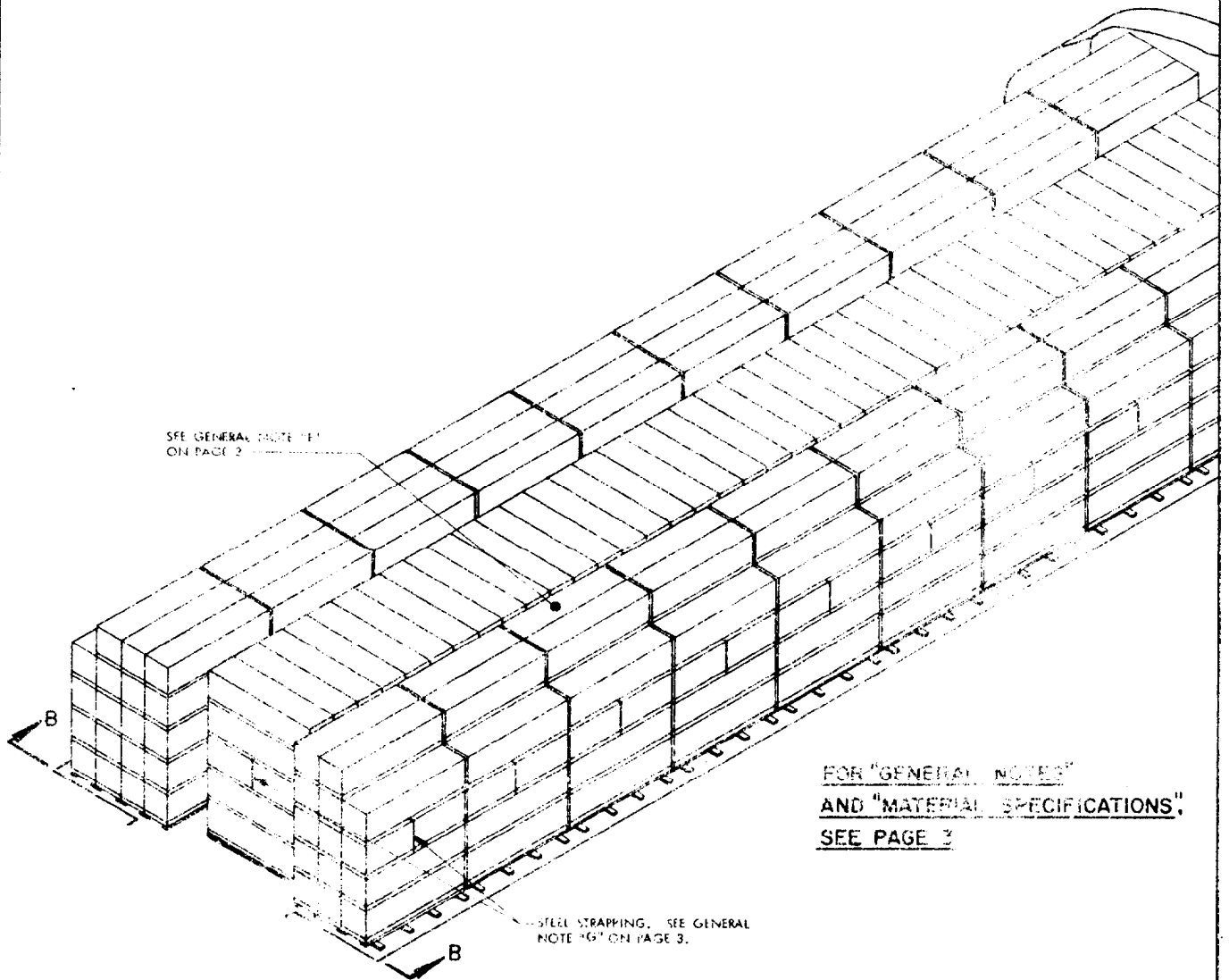
- A. THIS DOCUMENT HAS BEEN PREPARED AND ISSUED IN ACCORDANCE WITH AMCR 740-13, AND AUGMENTS TM 743-200-1 (CHAPTER 5).
- B. FOR DETAILS OF THE CNU-105/E CONTAINER, SEE DRAWING NO. 66E6091. CONTAINER DIMENSIONS ---- 94-1/8" LONG X 22-1/4" WIDE X 25-7/8" HIGH. GROSS WEIGHT ----- 940 POUNDS (APPROX).
- C. ITEM LOTS WILL NOT BE MIXED, BUT ONLY TO THE EXTENT THAT ITEMS OF ONE LOT WILL NOT BE STACKED ON TOP OF ITEMS FROM ANOTHER LOT.
- D. STORED CONTAINERS MUST NOT CONTACT A WALL OF A MAGAZINE. TO PROVIDE FOR THIS MANDATORY CLEARANCE REQUIREMENT, CONTAINERS WITH CBU ITEMS MAY BE ELIMINATED FROM THE DEPICTED STORAGE PATTERN AS NECESSARY, OR ITEMS CAN BE PLACED IN STORAGE WITH A SMALLER WIDTH ACCESS AISLE IN AN IGLOO MAGAZINE OR A SMALLER WIDTH SIDE AISLE IN A STRADLEY MAGAZINE.
- E. THE DIMENSIONS OF MATERIALS HANDLING EQUIPMENT (MHE) OPERATING AREAS AS SHOWN HEREIN MAY BE ADJUSTED TO SUIT LOCAL CONDITIONS AND/OR AVAILABLE EQUIPMENT. CONTAINER STACKS, AS NECESSARY, MAY BE OMITTED FROM A DEPICTED STORAGE PATTERN IF THE MHE OPERATING AREA IS NOT OF SUFFICIENT WIDTH TO ACCOMPLISH STACKING OPERATIONS. IF A ROW IS OMITTED FROM LENGTHWISE STORED STACKS, THE LENGTH OF THE WEDGES AND THE FLOOR DUNNAGE REQUIREMENTS MUST BE ADJUSTED.
- F. IF THE AVAILABLE MHE PERMITS, ADDITIONAL CNU-105/E CONTAINERS WITH ITEMS MAY BE STORED WITHIN THE FRONTAL AREA OF THE MAGAZINES.
- G. STACK STABILIZING STRAPS OF 3/4" X .028" X 13'-0" STEEL STRAPPING WILL BE INSTALLED AROUND THE THIRD LAYER CONTAINERS OF TWO ADJACENT CONTAINER STACKS IF EITHER STACK IS FOUR OR MORE CONTAINERS HIGH; ONE STRAP IS REQUIRED FOR EACH DOUBLE STACK AS SHOWN. SEAL THE LAP JOINT OF THE STRAPPING WITH ONE (1) STRAP SEAL.



STORAGE AS SHOWN

80' STRADLEY

ITEM QUANTITY
 CNU-105/E CONTAINER ----- 540
 (W/CBU ITEM)



FOR "GENERAL NOTES"
AND "MATERIAL SPECIFICATIONS,"
SEE PAGE 3

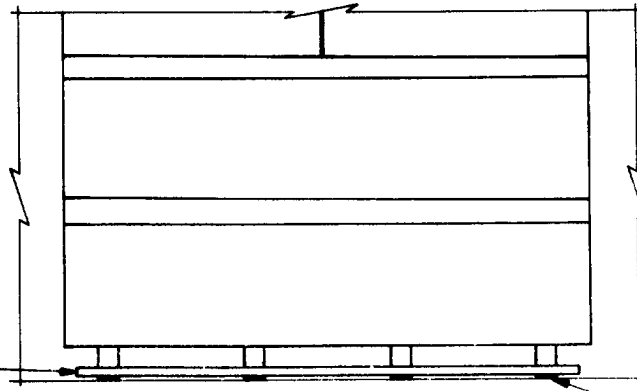
ISOMETRIC VIEW

(80' STRADLEY)

BILL OF MATERIAL PER STACK *				
STACK #	QUANTITY	LUMBER		6'-0" WEDGES
		SIZE	LINEAR FEET	
"C"	2	2" X 4" X 7'-6"	30	4
"D"	5	2" X 4" X 7'-6"	45	4
"E"	2	2" X 4" X 7'-6"	15	(SHIMS)

* SEE "PLAN VIEW" FOR IDENTIFICATION OF STACKS.

FLOOR DUNNAGE, 2" X 4" X 7'-6"
(2 REQD FOR EACH CONTAINER
STACK). POSITION AS SHOWN.

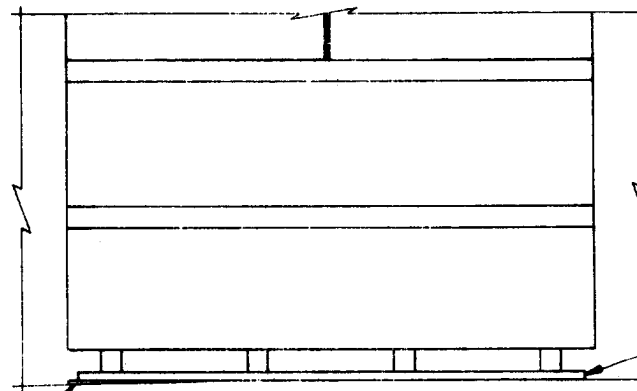


PLACEMENT OF FLOOR DUNNAGE AND WEDGES

THE DETAIL ABOVE REPRESENTS A SIDE
STACK AS VIEWED FROM THE SIDE OF
A MAGAZINE.

6'-0" WEDGE (4 REQD PER STACK).
POSITION TO CENTER UNDER CON-
TAINER SKID.

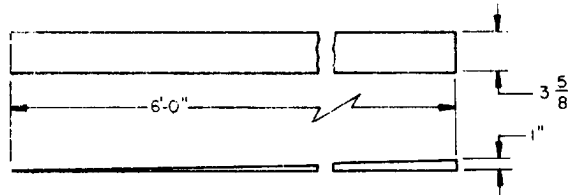
WEDGE OR SHIM (AS REQD TO
PROVIDE A LEVEL, FULL-BEARING
SURFACE FOR THE FLOOR DUN-
NAGE UNDER A LOWER CONTAINER
WITHIN A "B" OR "E" STACK).



PLACEMENT OF SHIMS

THE DETAIL ABOVE REPRESENTS A CENTER
STACK AS VIEWED FROM THE FRONT OF
A MAGAZINE.

FLOOR DUNNAGE, 2" X 4" X 7'-6"
(2 REQD FOR EACH CONTAINER
STACK). POSITION AS SHOWN.



WEDGE DETAIL

WEDGES ARE TO BE CUT FROM DUN-
NAGE LUMBER IN ACCORDANCE
WITH SPECIFIED DIMENSIONS.