

STORAGE IN 60' & 80' IGLOO AND 80' STRADLEY MAGAZINES OF CBU ITEMS PACKED IN THE CNU-92/E CONTAINER

INDEX

| <u>ITEM</u> | <u>PAGE(S)</u> |
|---|----------------|
| GENERAL NOTES, AND MATERIAL SPECIFICATIONS----- | 3 |
| IGLOO STORAGE PROCEDURES----- | 2,3 |
| STRADLEY STORAGE PROCEDURES----- | 4,5 |

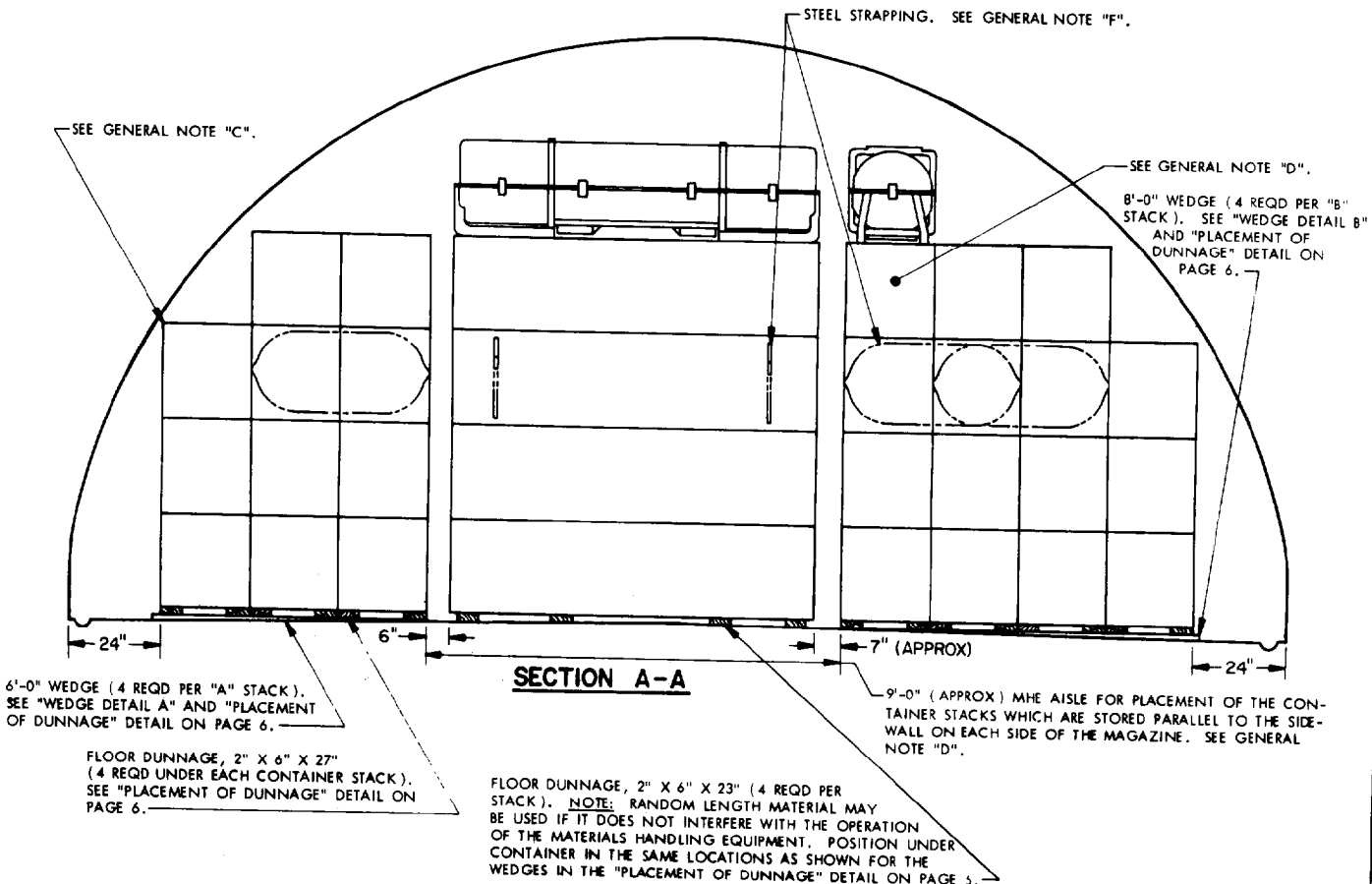
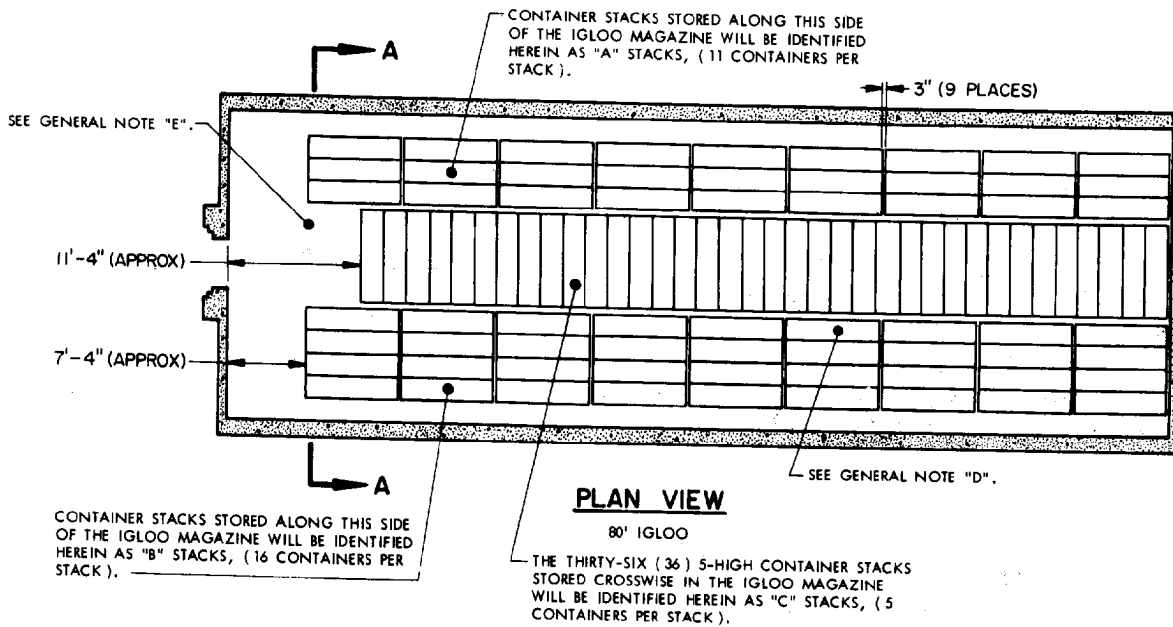
| | | | |
|-----------------------|--------------------|-----------------|--|
| PROJECT TR5 | DATE 17/3/68 | AREA 2nd/2nd | SUBMITTED 17/3/68 |
| DESIGNER 1-1-68 | CHK'D BY 8/3/68 | | COMMANDING OFFICER, SAVANNA ARMY DEPOT |
| REVISIONS | | | EXAMINED AND APPROVED |
| | | | <i>[Signature]</i> |
| | | | AMMUNITION PROCUREMENT & SUPPLY AGENCY |
| | | | APPROVED BY CHIEF OF CONSIGNING OFFICE |
| | | | U. S. ARMY MATERIEL COMMAND |
| | | | 11 MARCH 1968 |
| | | | CLASS DIVISION DRAWING FILE |
| | | | 19 48 7042 SPI-14A3 |

DO NOT SCALE

STORAGE AS SHOWN

80' IGLOO

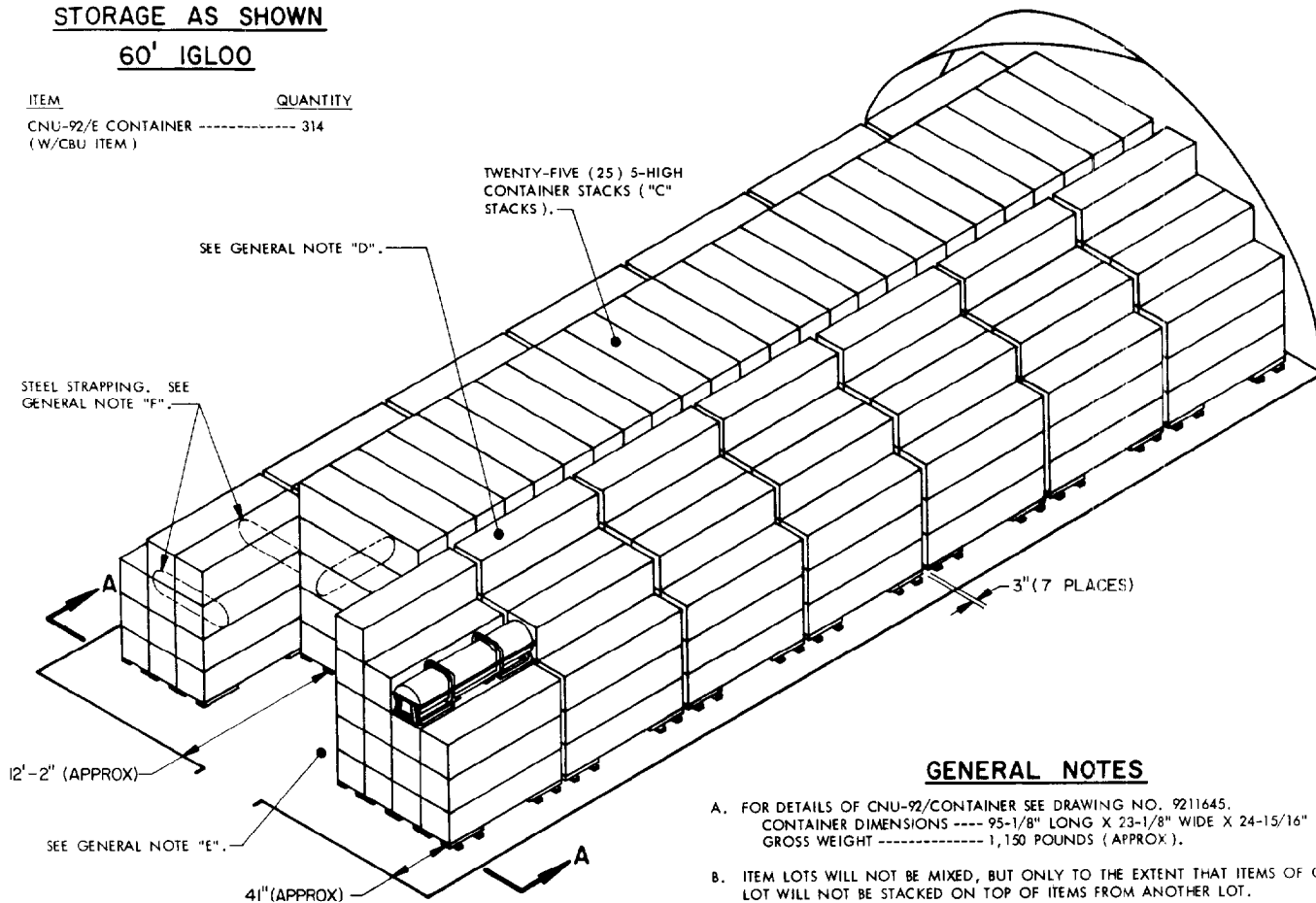
| ITEM | QUANTITY |
|------------------------------------|----------|
| CNU-92/E CONTAINER (W/CBU ITEM) | 423 |



STORAGE AS SHOWN

60' IGLOO

| ITEM | QUANTITY |
|--------------------------|----------|
| CNU-92/E CONTAINER ----- | 314 |
| (W/CBU ITEM) | |



ISOMETRIC VIEW

60' IGLOO

| BILL OF MATERIAL PER STACK* | | | | |
|-----------------------------|----------|---------------|-------------|--------------|
| STACK | LUMBER | | | WEDGES |
| | QUANTITY | SIZE | LINEAR FEET | |
| A | 12 | 2" X 6" X 27" | 27 | 4 EACH 6'-0" |
| B | 16 | 2" X 6" X 27" | 36 | 4 EACH 8'-0" |
| C | 4 | 2" X 6" X 23" | 7-2/3 | NONE |

*SEE "PLAN VIEW" FOR IDENTIFICATION OF STACKS.

GENERAL NOTES

- A. FOR DETAILS OF CNU-92/CONTAINER SEE DRAWING NO. 9211645. CONTAINER DIMENSIONS ---- 95-1/8" LONG X 23-1/8" WIDE X 24-15/16" HIGH. GROSS WEIGHT ----- 1,150 POUNDS (APPROX).
- B. ITEM LOTS WILL NOT BE MIXED, BUT ONLY TO THE EXTENT THAT ITEMS OF ONE LOT WILL NOT BE STACKED ON TOP OF ITEMS FROM ANOTHER LOT.
- C. STORED CONTAINERS MUST NOT CONTACT A WALL OF A MAGAZINE. TO PROVIDE FOR THIS MANDATORY CLEARANCE REQUIREMENT, CONTAINERS WITH CBU ITEMS MAY BE ELIMINATED FROM THE DEPICTED STORAGE PATTERN AS NECESSARY.
- D. AISLE DIMENSIONS AS SHOWN HEREIN MAY BE ADJUSTED TO SUIT LOCAL CONDITIONS AND/OR AVAILABLE MATERIALS HANDLING EQUIPMENT (MHE). ONE OR TWO ROWS OF CONTAINER STACKS, AS NECESSARY, MAY BE OMITTED FROM A DEPICTED STORAGE PATTERN IF THE MHE AISLE IS NOT OF SUFFICIENT WIDTH TO ACCOMPLISH STACKING OPERATIONS. IF A ROW OR TWO IS OMITTED, THE LENGTH OF THE WEDGES AND THE FLOOR DUNNAGE REQUIREMENTS MUST BE ADJUSTED.
- E. IF THE AVAILABLE MHE PERMITS, ADDITIONAL CNU-92/E CONTAINERS WITH ITEMS MAY BE STORED WITHIN THE FRONTAL AREA OF THE MAGAZINES.
- F. STACK STABILIZING STRAPS, 3/4" X .028" X 12'-0" STEEL STRAPPING WILL BE INSTALLED AROUND THE THIRD LAYER CONTAINERS OF TWO ADJACENT CONTAINER STACKS IF EITHER STACK IS FOUR OR MORE CONTAINERS HIGH; TWO (2) STRAPS ARE REQUIRED FOR EACH DOUBLE STACK AS SHOWN. CAUTION: A SINGLE STACK MUST NOT BE STACKED MORE THAN THREE (3) CONTAINERS HIGH WITHOUT BEING STRAPPED TO AN ADJACENT STACK. POSITION ANTI-CHAFING MATERIAL UNDER STEEL STRAPPING AT ALL POINTS OF STRAP/CONTAINER CONTACT. SEAL THE LAP JOINT OF THE STRAPPING WITH ONE (1) STRAP SEAL LOCATED SO AS NOT TO BE IN CONTACT WITH THE CONTAINER.

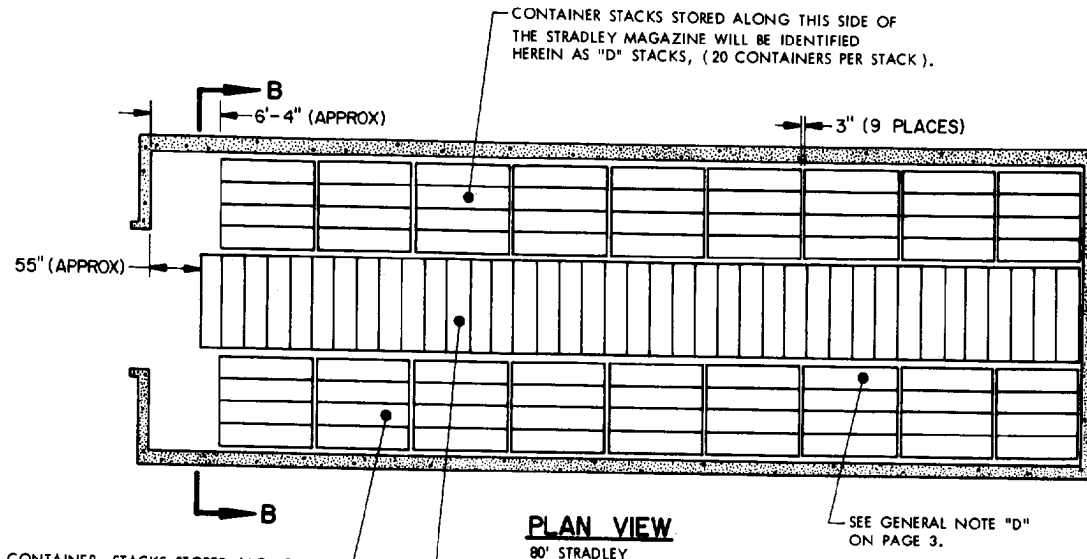
MATERIAL SPECIFICATIONS

LUMBER ----- : SEE TM 715-5500-1, DUNNAGE LUMBER; FED SPEC MM-L-751.

ANTI-CHAFING MATERIAL: NEUTRAL BARRIER MATERIAL, MIL-B-121 (OR EQUAL).

STEEL STRAPPING ----- : TYPE I OR IV, CLASS A OR B, FED SPEC QQ-5-781.

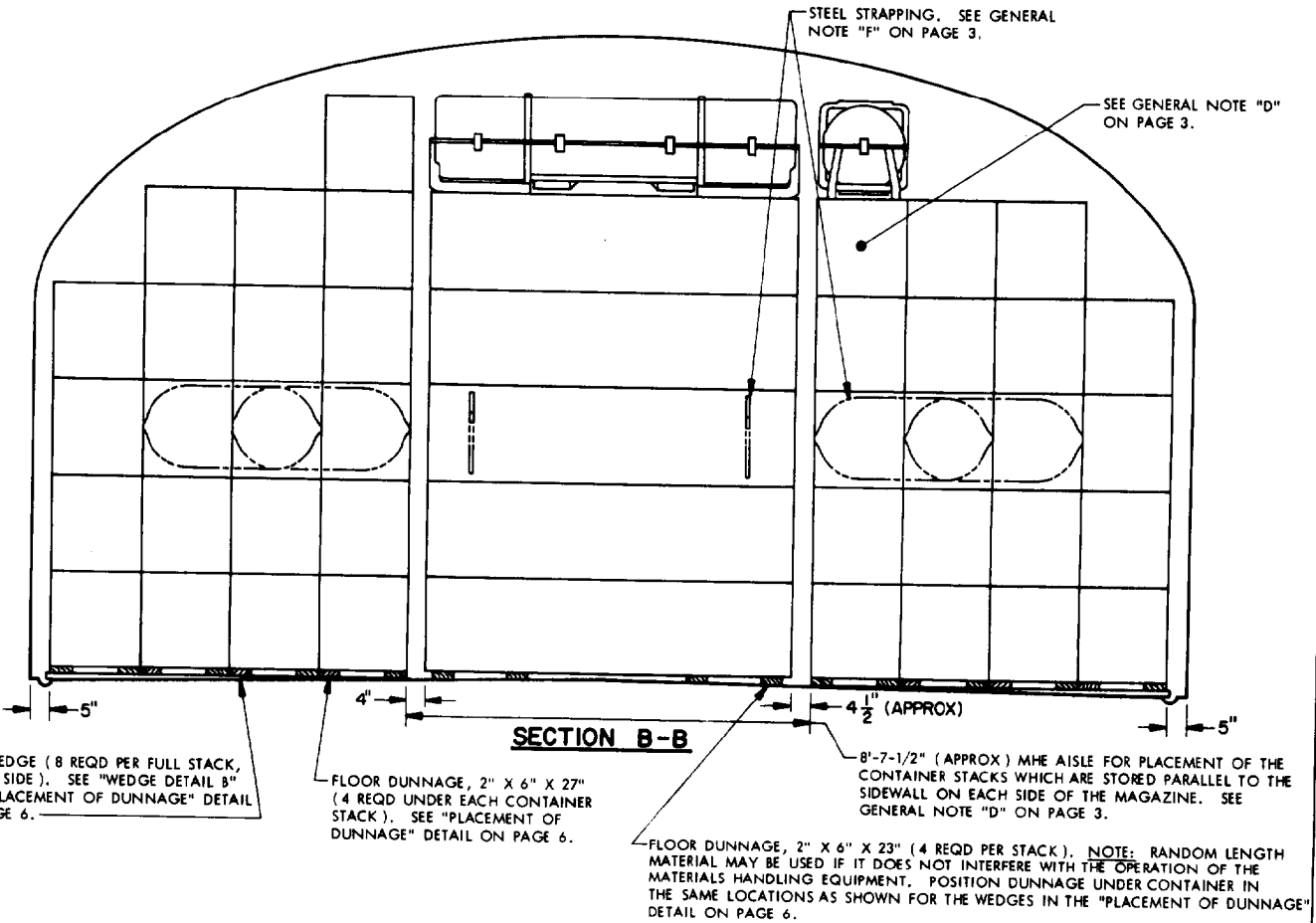
STRAP SEAL ----- : COMMERCIAL GRADE.



PLAN VIEW
80' STRADLEY

CONTAINER STACKS STORED ALONG THIS SIDE OF THE STRADLEY MAGAZINE WILL BE IDENTIFIED HEREIN AS "E" STACKS, (20 CONTAINERS PER STACK).

THE THIRTY-NINE (39) 6-HIGH CONTAINER STACKS STORED CROSSWISE IN THE STRADLEY MAGAZINE WILL BE IDENTIFIED HEREIN AS "F" STACKS, (6 CONTAINERS PER STACK).



SECTION B-B

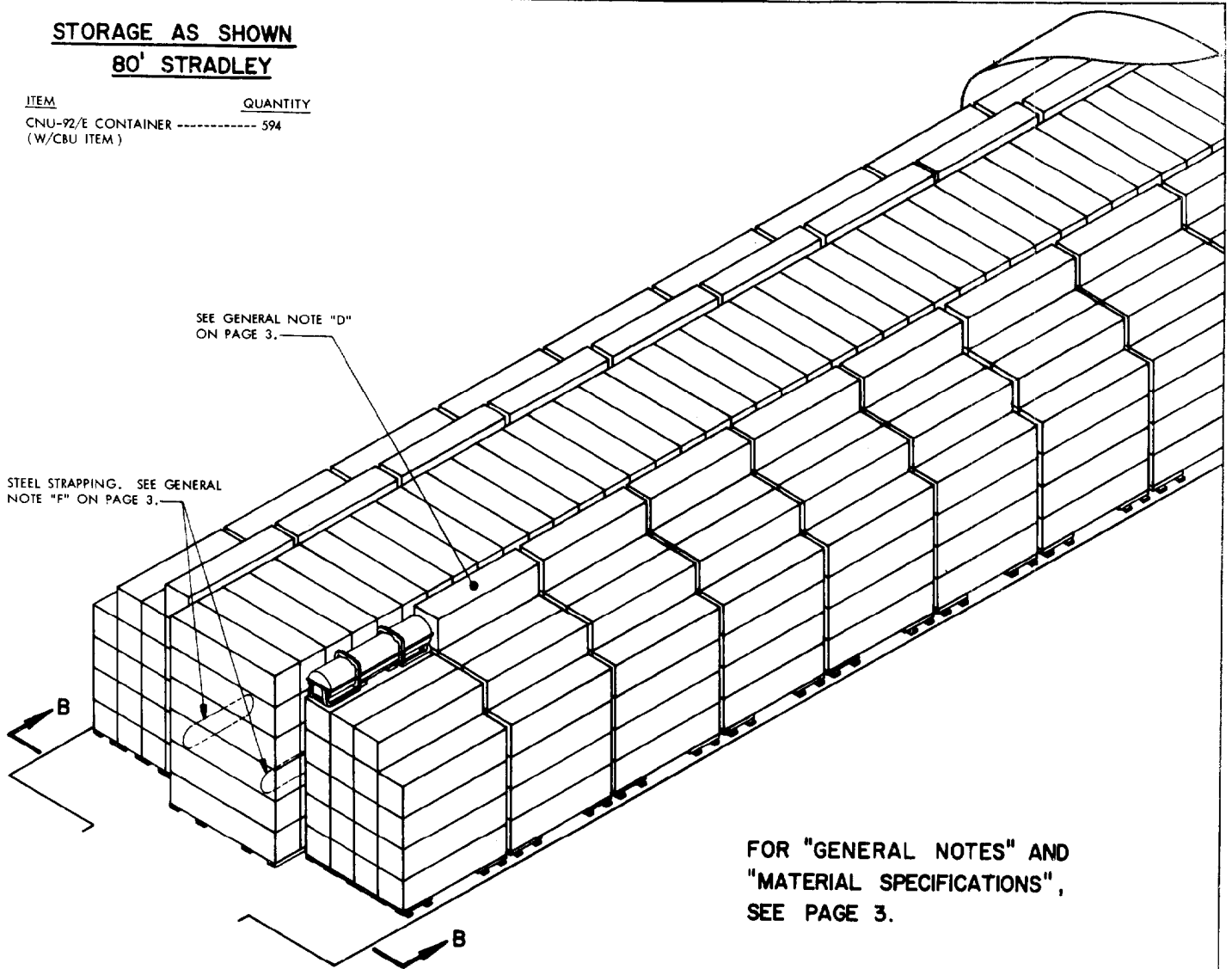
8'-0" WEDGE (8 REQD PER FULL STACK, 4 EACH SIDE). SEE "WEDGE DETAIL B" AND "PLACEMENT OF DUNNAGE" DETAIL ON PAGE 6.

FLOOR DUNNAGE, 2" X 6" X 27" (4 REQD UNDER EACH CONTAINER STACK). SEE "PLACEMENT OF DUNNAGE" DETAIL ON PAGE 6.

FLOOR DUNNAGE, 2" X 6" X 23" (4 REQD PER STACK). NOTE: RANDOM LENGTH MATERIAL MAY BE USED IF IT DOES NOT INTERFERE WITH THE OPERATION OF THE MATERIALS HANDLING EQUIPMENT. POSITION DUNNAGE UNDER CONTAINER IN THE SAME LOCATIONS AS SHOWN FOR THE WEDGES IN THE "PLACEMENT OF DUNNAGE" DETAIL ON PAGE 6.

STORAGE AS SHOWN
80' STRADLEY

| ITEM | QUANTITY |
|--|----------|
| CNU-92/E CONTAINER ----- (W/CBU ITEM) | 594 |

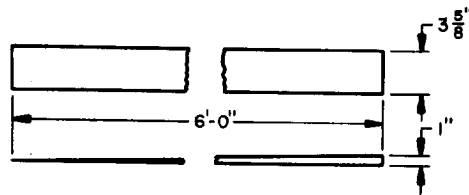
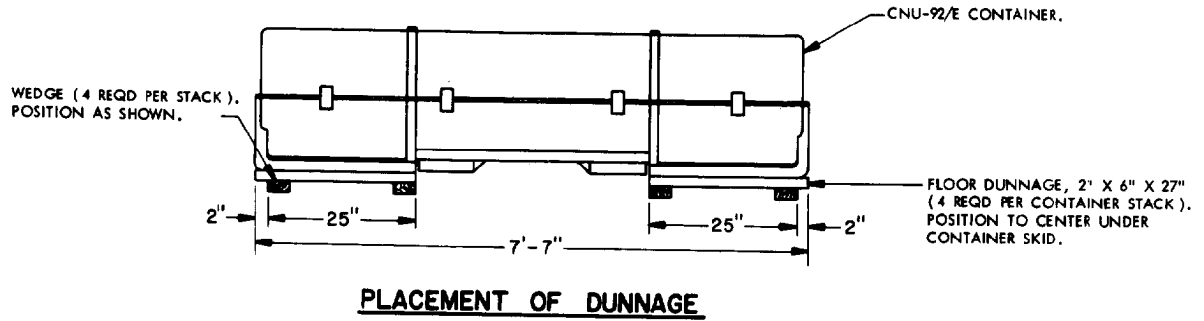


FOR "GENERAL NOTES" AND
 "MATERIAL SPECIFICATIONS",
 SEE PAGE 3.

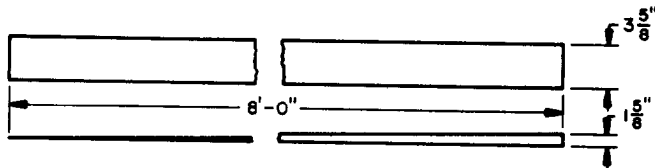
ISOMETRIC VIEW
 80' STRADLEY

| BILL OF MATERIAL PER STACK* | | | | |
|-----------------------------|----------|---------------|-------------|--------------|
| STACK | LUMBER | | | WEDGES |
| | QUANTITY | SIZE | LINEAR FEET | |
| D | 16 | 2" X 6" X 27" | 36 | 4 EACH 8'-0" |
| E | 16 | 2" X 6" X 27" | 36 | 4 EACH 8'-0" |
| F | 4 | 2" X 6" X 23" | 7-2/3 | NONE |

*SEE "PLAN VIEW" FOR IDENTIFICATION OF STACKS.



FULL 1" THICK BY NOMINAL 4" WIDE BY 6'-0" LONG MATERIAL CUT AS DETAILED. THE QUANTITY REQUIRED IS AS SPECIFIED WITHIN THE "SECTION A-A" VIEW ON PAGE 2.



NOMINAL SIZED 2" X 4" X 8'-0" MATERIAL CUT AS DETAILED. **NOTE:** IF IT IS DESIRED TO USE 9'-0" WEDGES WHICH MAY BE ON HAND, 12" SHOULD BE CUT FROM THE POINTED END. THE QUANTITY REQUIRED IS AS SPECIFIED WITHIN THE SECTION VIEWS.