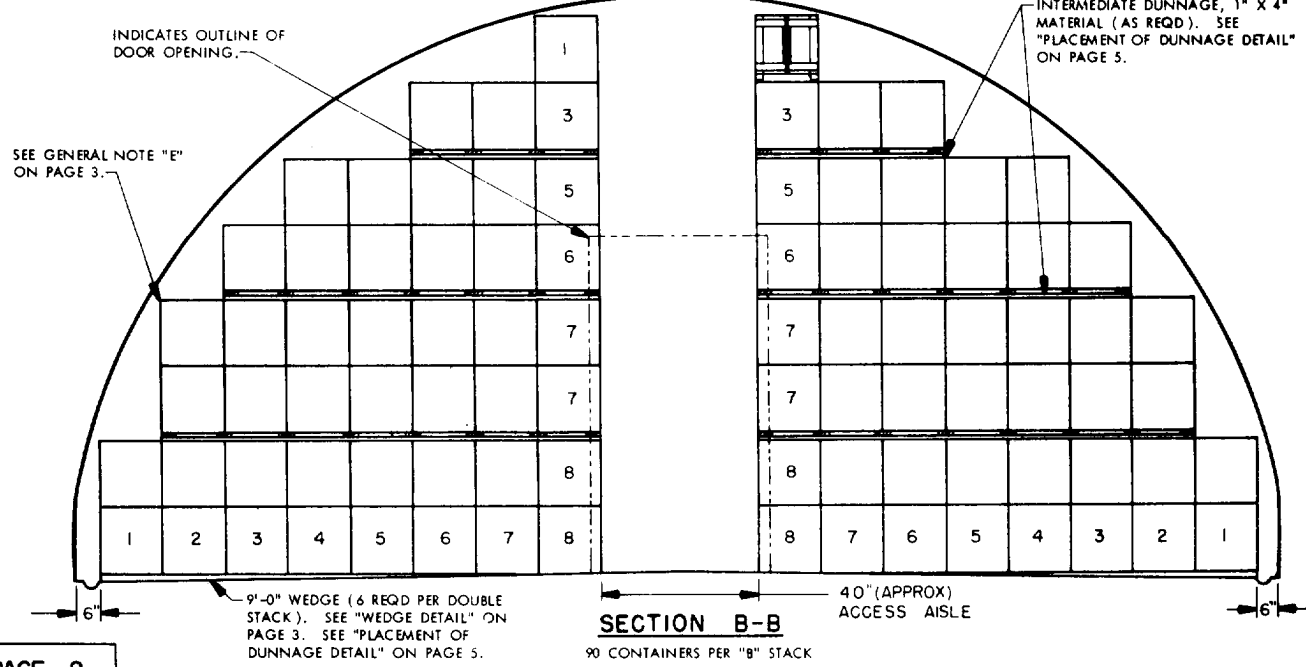
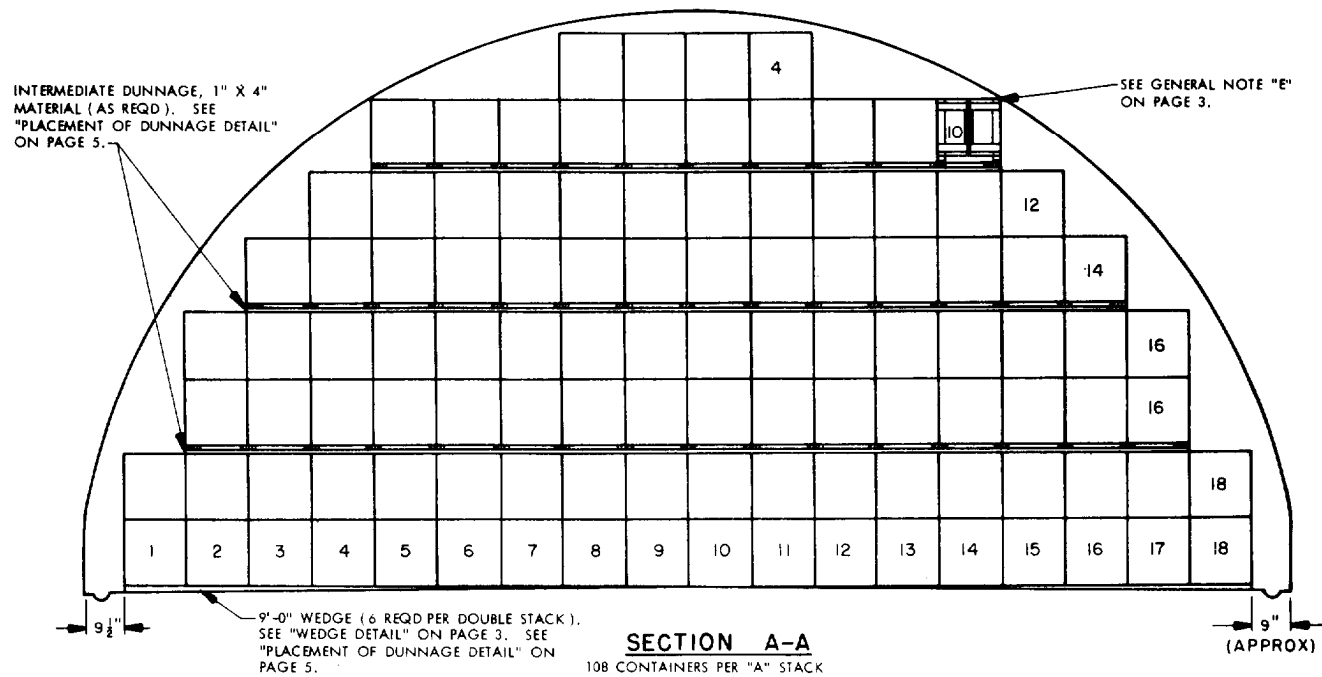
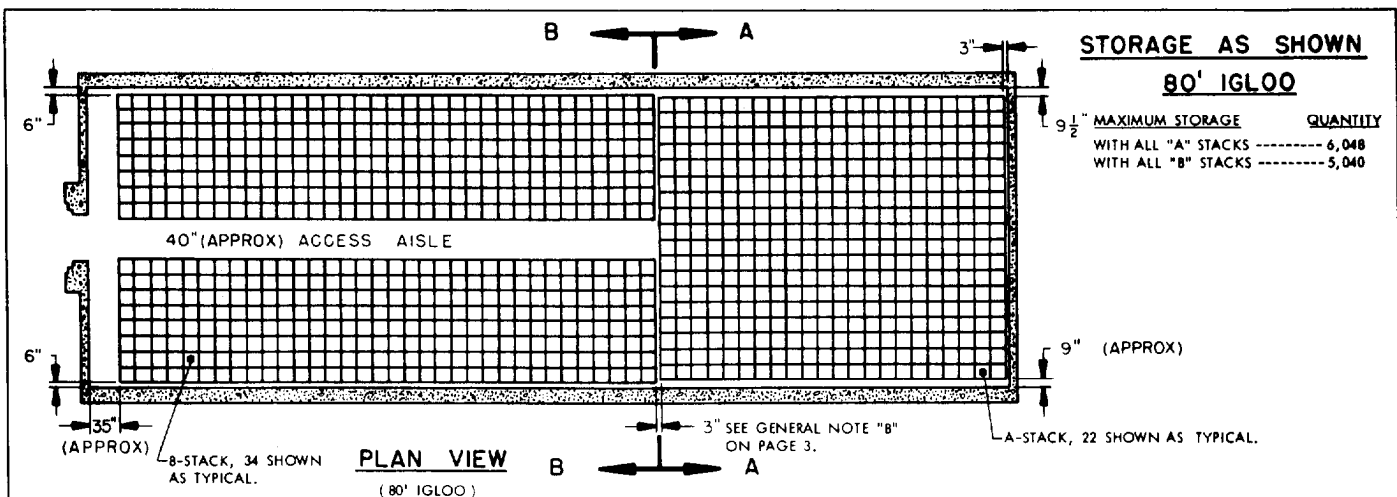


STORAGE IN 60' & 80' IGLOO AND 80' STRADLEY MAGAZINES OF CBU ITEMS PACKED IN THE CNU-81/E CONTAINER

<u>ITEM</u>	<u>INDEX</u>	<u>PAGE(S)</u>
GENERAL NOTES, AND MATERIAL SPECIFICATIONS	-----	3
IGLOO STORAGE PROCEDURES	-----	2,3
STRADLEY STORAGE PROCEDURES	-----	4,5

DRAFTSMAN JEE	PROJ ENG 01W/RL	APSA PJS	SUBMITTED WBS Harding	
CHECKER BA/GPF	AMC AMMO CTR RB		COMMANDING OFFICER, SAVANNA ARMY DEPOT	
REVISIONS			EXAMINED AND APPROVED Ralph Hill	
			AMMUNITION PROCUREMENT & SUPPLY AGENCY	
			APPROVED BY ORDER OF COMMANDING GENERAL	
			U. S. ARMY MATERIEL COMMAND	
			U. S. ARMY MATERIEL COMMAND	
			CLASS	DIVISION
			DRAWING	FILE
			19	48
			7036	SPI-4A2

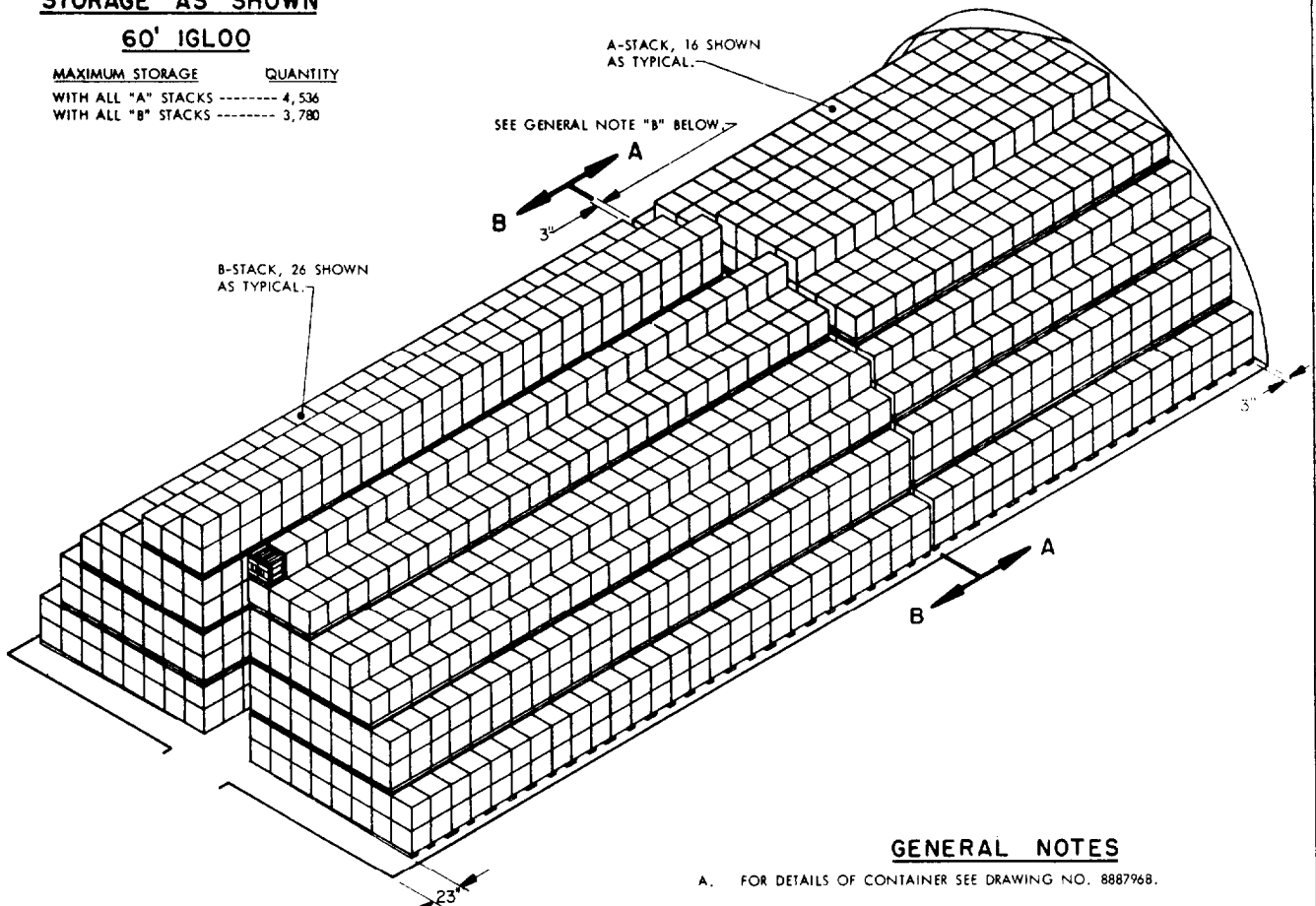
DO NOT SCALE



STORAGE AS SHOWN

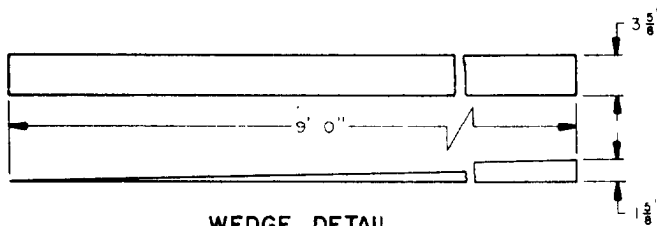
60' IGLOO

MAXIMUM STORAGE QUANTITY
 WITH ALL "A" STACKS ----- 4,536
 WITH ALL "B" STACKS ----- 3,780



ISOMETRIC VIEW

(80' IGLOO)



WEDGE DETAIL

2" X 4" MATERIAL (6 REQD PER DOUBLE STACK). SEE "PLACEMENT OF DUNNAGE DETAIL" ON PAGE 5.

GENERAL NOTES

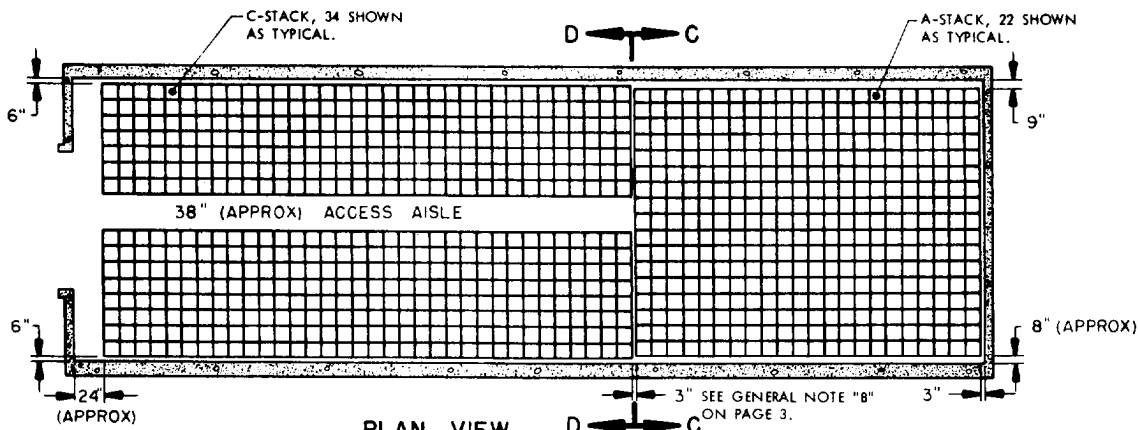
- A. FOR DETAILS OF CONTAINER SEE DRAWING NO. 8887968.
 CONTAINER DIMENSIONS --- 16-5/8" LONG X 16-5/8" WIDE X 17-13/16" HIGH.
 GROSS WEIGHT ----- 175 POUNDS (APPROX).
- B. WHENEVER PRACTICABLE THE LARGEST LOT SHOULD BE STORED IN THE REAR OF THE MAGAZINE BY USING TYPE "A" STACKS. LOTS WILL NOT BE MIXED WITHIN STACKS. A THREE INCH (3") SEPARATION WILL BE ALLOWED BETWEEN ADJACENT LOTS.
- C. **CAUTION:** A SINGLE STACK MUST NOT BE STACKED MORE THAN TWO (2) CONTAINERS HIGH WITHOUT BEING TIED INTO AN ADJACENT STACK, BOTH LONGITUDINALLY AND Laterally WITH INTERMEDIATE DUNNAGE.
- D. AISLE DIMENSIONS AS SHOWN HEREIN MAY BE ADJUSTED TO SUIT LOCAL CONDITIONS AND/OR AVAILABLE MATERIALS HANDLING EQUIPMENT (MHE).
- E. STORED CONTAINERS MUST NOT CONTACT THE WALL OF A MAGAZINE. PROVIDE FOR THIS MANDATORY CLEARANCE REQUIREMENT, CONTAINERS WITH ITEMS MAY BE ELIMINATED FROM THE DEPICTED STACK PATTERNS, AS NECESSARY.
- F. FOR USE WITH THIS STORAGE PROCEDURAL DRAWING, A "C" STACK IS DEFINED AS A STACK CONFIGURATION WHICH CONTAINS MORE ROWS ON ONE SIDE OF THE ACCESS AISLE THAN ON THE OTHER SIDE.

BILL OF MATERIAL PER DOUBLE STACK

STACK TYPE	WEDGES		
	LUMBER	LENGTH	NO. REQD
A	2" X 4"	9'-0"	6
B	2" X 4"	9'-0"	6
X	INTERMEDIATE DUNNAGE		
	LUMBER	LINEAR FEET	BOARD FEET
A	1" X 4"	284-1/2	94-5/6
B	1" X 4"	237-1/2	79-1/6

MATERIAL SPECIFICATIONS

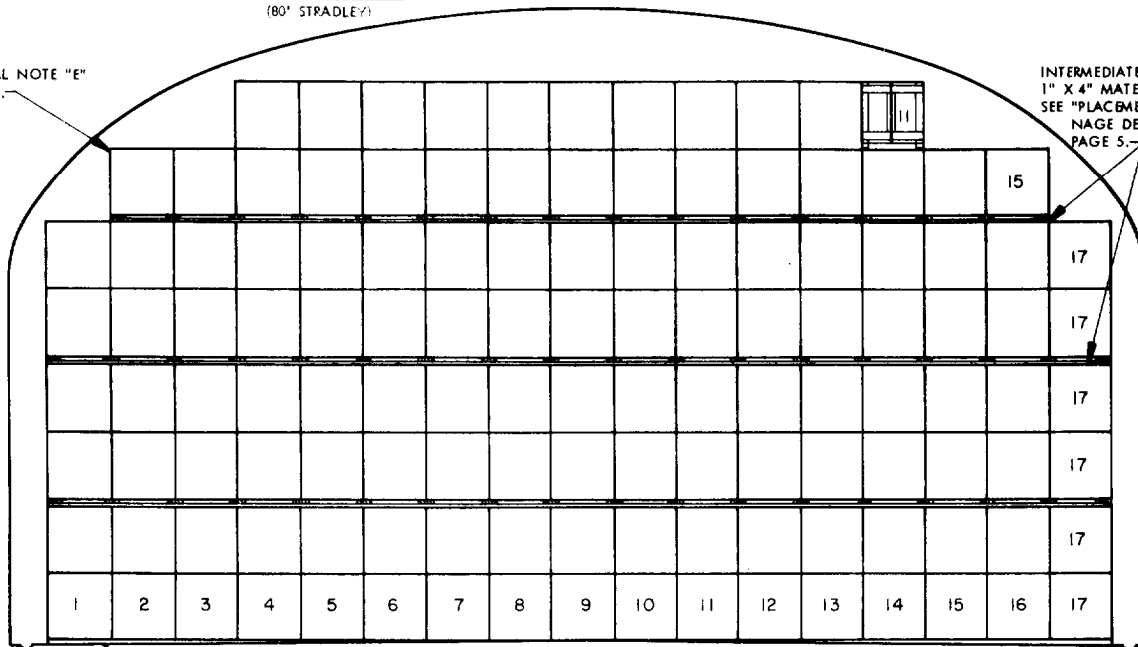
LUMBER: SEE TM 715-5500-1, DUNNAGE LUMBER, FED SPEC MM-L-751.



PLAN VIEW
(80' STRADLEY)

SEE GENERAL NOTE "E"
ON PAGE 3.

INTERMEDIATE DUNNAGE,
1" X 4" MATERIAL (AS REQD).
SEE "PLACEMENT OF DUNNAGE
DETAIL" ON
PAGE 5.



SECTION C-C

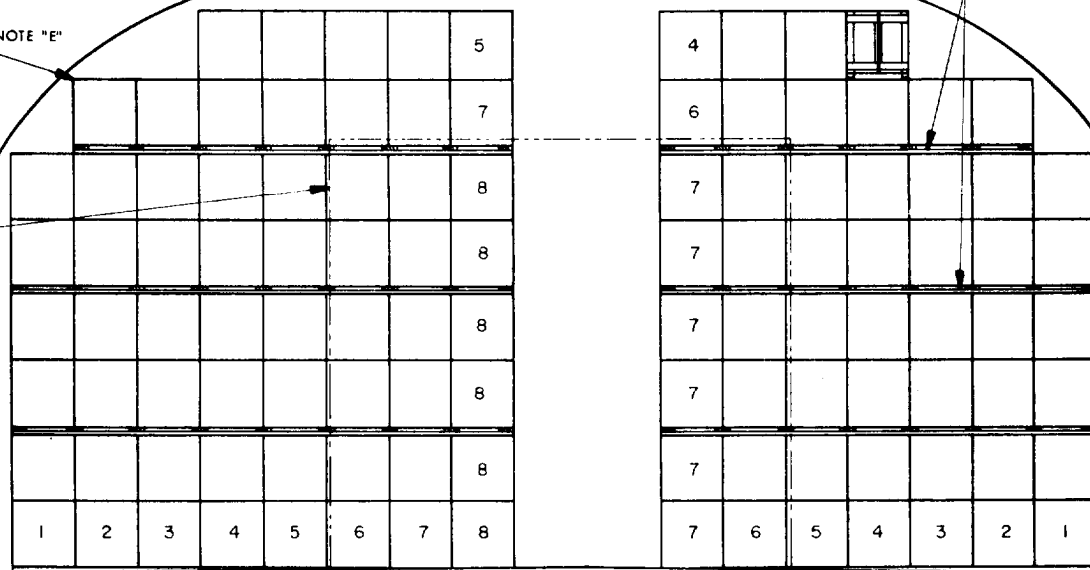
128 CONTAINERS PER "A" STACK

9'-0" WEDGE (6 REQD PER DOUBLE STACK).
SEE "WEDGE DETAIL" ON PAGE 3. SEE
"PLACEMENT OF DUNNAGE DETAIL" ON
PAGE 5.

INTERMEDIATE DUNNAGE, 1" X 4"
MATERIAL (AS REQD). SEE "PLACE-
MENT OF DUNNAGE DETAIL" ON
PAGE 5.

SEE GENERAL NOTE "E"
ON PAGE 3.

INDICATES
OUTLINE OF
DOOR OPEN-
ING.



SECTION D-D

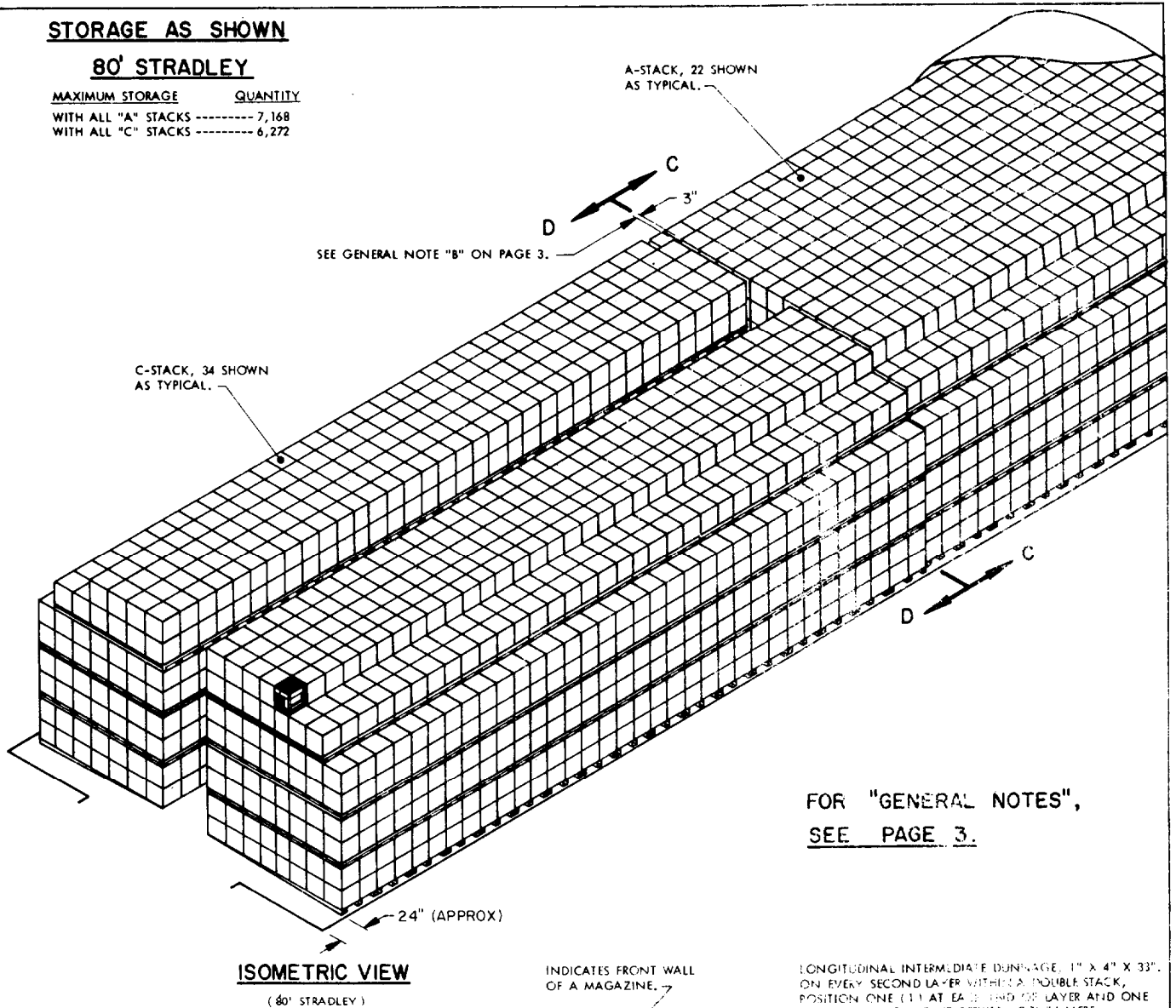
112 CONTAINERS PER "C" STACK

9'-0" WEDGE (6 REQD PER DOUBLE STACK).
SEE "WEDGE DETAIL" ON PAGE 3. SEE "PLACE-
MENT OF DUNNAGE DETAIL" ON PAGE 5.

STORAGE AS SHOWN

80' STRADLEY

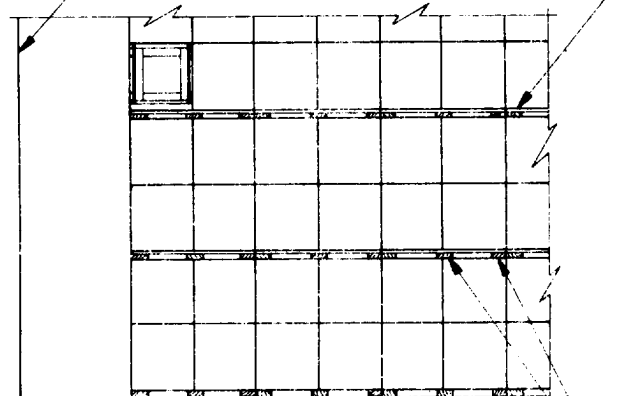
MAXIMUM STORAGE QUANTITY
 WITH ALL "A" STACKS ----- 7,168
 WITH ALL "C" STACKS ----- 6,272



FOR "GENERAL NOTES",
 SEE PAGE 3.

INDICATES FRONT WALL OF A MAGAZINE.

LONGITUDINAL INTERMEDIATE DUNNAGE, 1" X 4" X 33". ON EVERY SECOND LAYER WITHIN A DOUBLE STACK, POSITION ONE (1) AT EACH END OF LAYER AND ONE (1) UNDER EACH JOINT BETWEEN CONTAINERS.



BILL OF MATERIAL PER DOUBLE STACK			
STACK TYPE	WEDGES		
	LUMBER	LENGTH	NO. REQD
A	2" X 4"	9'-0"	6
C	2" X 4"	9'-0"	6
LUMBER	INTERMEDIATE DUNNAGE		
	LUMBER	LINEAR FEET	BOARD FEET
A	1" X 4"	346-2/3	115-5/9
C	1" X 4"	313-1/2	104-1/2