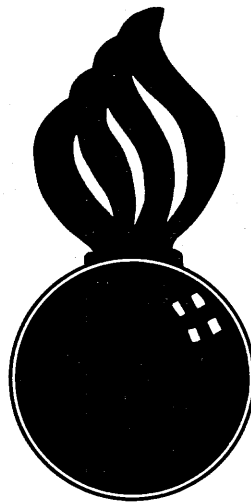


APPROVED
BUREAU OF EXPLOSIVES

A. J. Grassmuck
INSPECTOR
DATE 4/24/62

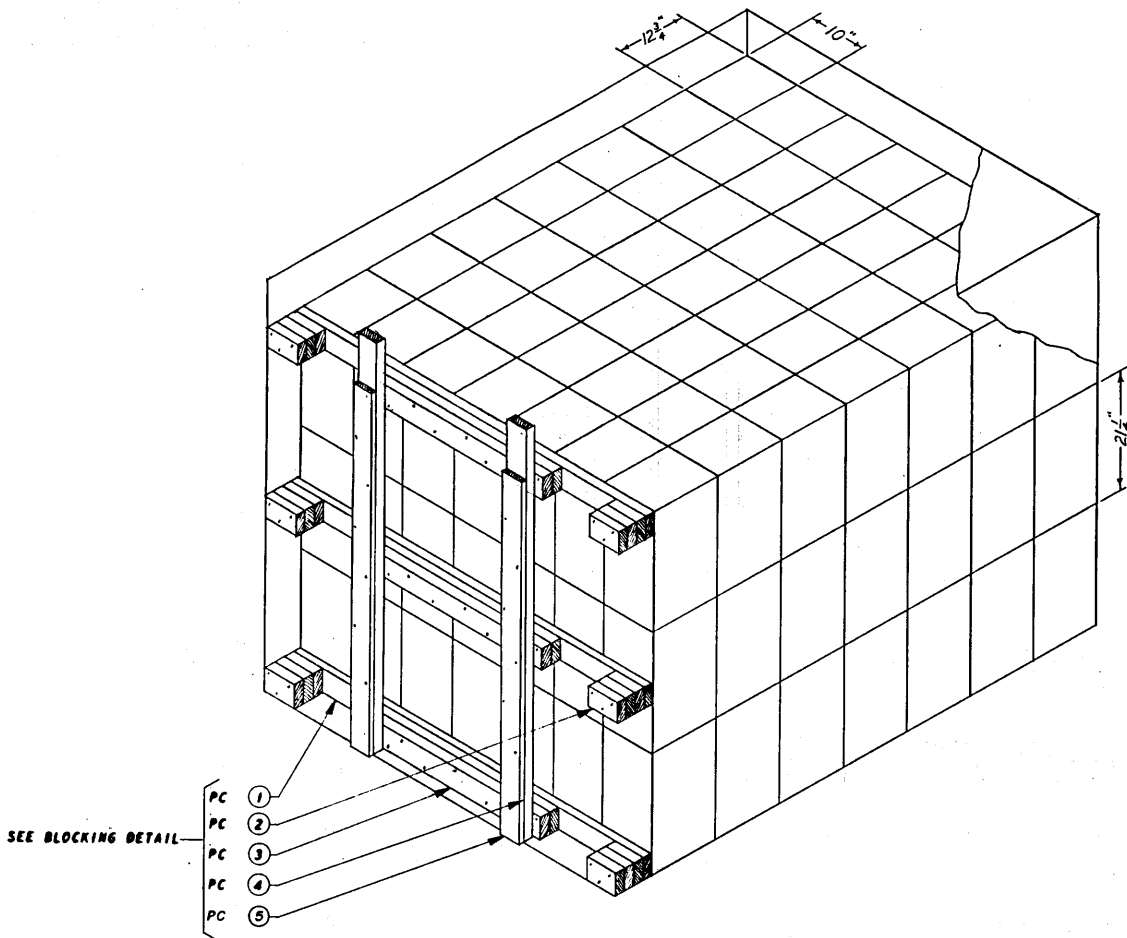


**FILLING TYPE 2 (STANDARD) CARGO
TRANSPORTER WITH M26 (T53)
MINE, APERS, PACKED IN WOODEN
BOX, FOR SHIPMENT "VIA CONEX"**

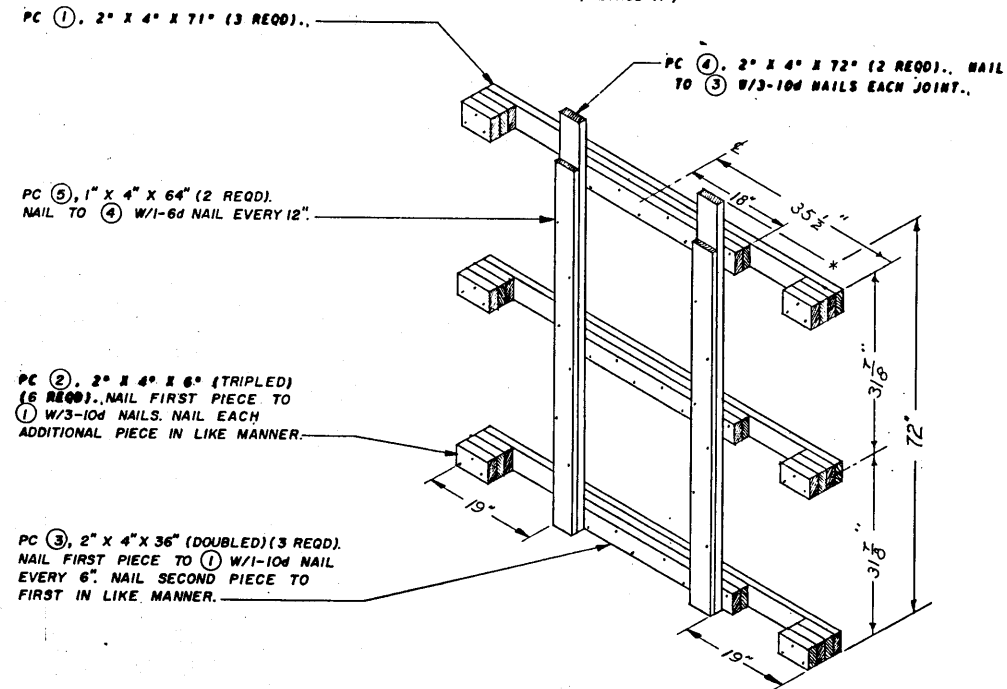
NOTE:— FOR LOADING AND BRACING IN GONDOLA CAR
SEE DRAWING NUMBER 19-48-7018-SP5H1

FILLING TYPE 2 (STANDARD) CARGO TRANSPORTER WITH M26 (T53) MINE, APERS, PACKED IN WOODEN BOX, FOR SHIPMENT "VIA CONEX"			
DRAFTSMAN <i>GBF</i>	TRACER	ENGINEER <i>DIW/BAK</i>	SUBMITTED <i>Paul P. MacIntyre</i> COLONEL, ORD. CORPS U.S.A.
CHECKER <i>RHA/GWP</i>	CHECKER	ENGINEER	EXAMINED <i>James J. Hoctor</i> ORD. CORPS U.S.A.
REVISIONS			APPROVED BY ORDER OF THE CHIEF OF ORDNANCE <i>John P. Beach</i> ORD. CORPS U.S.A.
			ORDNANCE CORPS U.S.A.
			I FEBRUARY 1962
CLASS	DIVISION	DRAWING	FILE
19	48	7028	SP 16 A 8

DO NOT SCALE



ISOMETRIC VIEW
(METHOD "A")



BLOCKING DETAIL

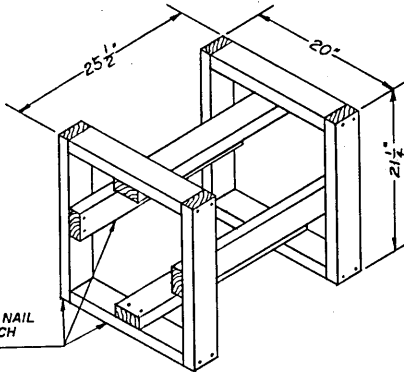
(1 REQD)

FILLING AND BLOCKING PROCEDURES

- LOAD BOXES IN TRANSPORTER AS SHOWN IN ISOMETRIC VIEW, PAGE 2 OR "ALTERNATIVE FILLING" DETAIL, PAGE 3. USE SOLID FILL AS REQD. SEE GENERAL NOTE "D".
- ASSEMBLE PCS ①, ② AND ③ (SEE BLOCKING DETAIL) AND PLACE ASSEMBLIES IN TRANSPORTER..
- AS EACH ASSEMBLED PCS ①, ② AND ③ IS LOCATED VERTICALLY (SEE BLOCKING DETAIL FOR PROPER SPACING) NAIL PCS ④ TO PCS ③ AS DIRECTED..
- NAIL PC ⑤ TO PC ④ AS DIRECTED.
- CLOSE AND LATCH TRANSPORTER DOORS AND SEAL AS REQUIRED..

CAUTION

FIELD CHECK FOR THICKNESS OF "BLOCKING DETAIL" TO ASSURE TIGHT FIT OF BLOCKING BETWEEN LADING AND TRANSPORTER DOORS. ADJUST AS REQUIRED.



TYPICAL FILLER

DIMENSIONS AS SHOWN ARE FOR A LOAD REDUCED BY FOUR BOXES. FOR REDUCTION IN LOAD OTHER THAN FOUR BOXES, CONSTRUCT FILLER TO PROPER SIZE BY METHOD COMPARABLE TO THAT SHOWN.

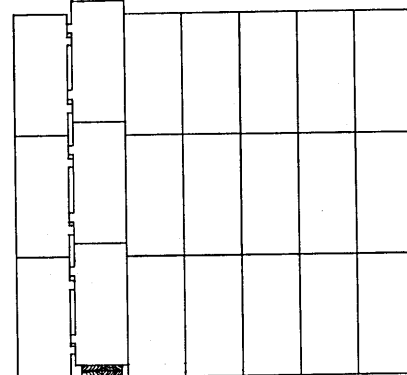
BILL OF MATERIAL

LUMBER	LINEAL FEET	BOARD FEET
1" X 4"	11	4
2" X 4"	57	38
NAILS	NO. REQD	POUNDS
6d (2")	12	-1/4
10d (3")	114	1-3/4

GENERAL NOTES

- THIS DRAWING IMPLEMENTS AR 55-100..
- FILLING AND BLOCKING PROCEDURES SHOWN ARE BASED ON CARGO TRANSPORTERS, TYPE 2. (STANDARD) INSIDE DIMENSIONS 66" LONG X 71" WIDE X 72" HIGH. MILITARY SPECIFICATION MIL-D-11006E.
- FOR DETAILS OF THE NINE, APERS, BOX SEE DRAWING NO. 8822122. GROSS WEIGHT - 60 LBS (APPROX). BOX DIMENSIONS (APPROX) 21 1/2" LONG X 12 1/2" WIDE X 10" HIGH, CUBIC FEET 1.6..
- LADING WEIGHT, INCLUDING DUNNAGE, MUST NOT EXCEED 9,000 POUNDS.. IF A PARTIAL LOAD IS ACCOMPLISHED, LADING MUST BE BLOCKED AND BRACED AGAINST MOVEMENT IN ALL THREE (3) DIRECTIONS BY METHODS EQUAL TO THOSE SHOWN.. IF EXCESS SPACE ACROSS WIDTH OF TRANSPORTER IS 2" OR GREATER, SOLID FILL TYPE BLOCKING SHOULD BE USED TO FILL VOID.

ALTERNATIVE FILLING IS ACCOMPLISHED BY ROTATING ALTERNATE ROWS 180° (SO THAT CLEATS OF BOXES WILL NEST AS SHOWN). THE NUMBER OF ROWS TURNED (3 MAX, WITH RISER) WILL DEPEND ON SPACE REQUIRED ACROSS WIDTH OF TRANSPORTER.



ALTERNATIVE FILLING

(METHOD "B")

METHOD "A" IS THE PREFERRED LOADING; HOWEVER, BECAUSE OF VARYING BOX DIMENSIONS, HEIGHT OF BOXES MUST BE FIELD CHECKED TO ASSURE THEIR FIT ACROSS WIDTH OF TRANSPORTER.

MATERIAL SPECIFICATIONS

- LUMBER: SEE PARAGRAPH 5400, ORDN 3-4, VOL 2..
- NAILS: COMMON, CEMENT COATED, FED SPEC FF-N-105..
- ALT: ANNULAR-RING TYPE NAIL OF SAME SIZE..

LOAD AS SHOWN

ITEM	QUANTITY	WEIGHT
BOXES	147	8,820 LBS (APPROX)
DUNNAGE		107 LBS
TOTAL WEIGHT		8,927 LBS*

*THE ACTUAL SHIPPING WEIGHT MAY DEVIATE BECAUSE OF VARIANCE IN BOX WEIGHTS. SEE GENERAL NOTE "D" AND "TYPICAL FILLER" DETAIL. USE FILLER AS REQUIRED.

