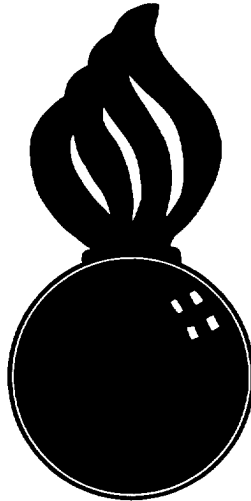


APPROVED
BUREAU OF EXPLOSIVES

A. J. Brasenuck
INSPECTOR
DATE *4/24/62*



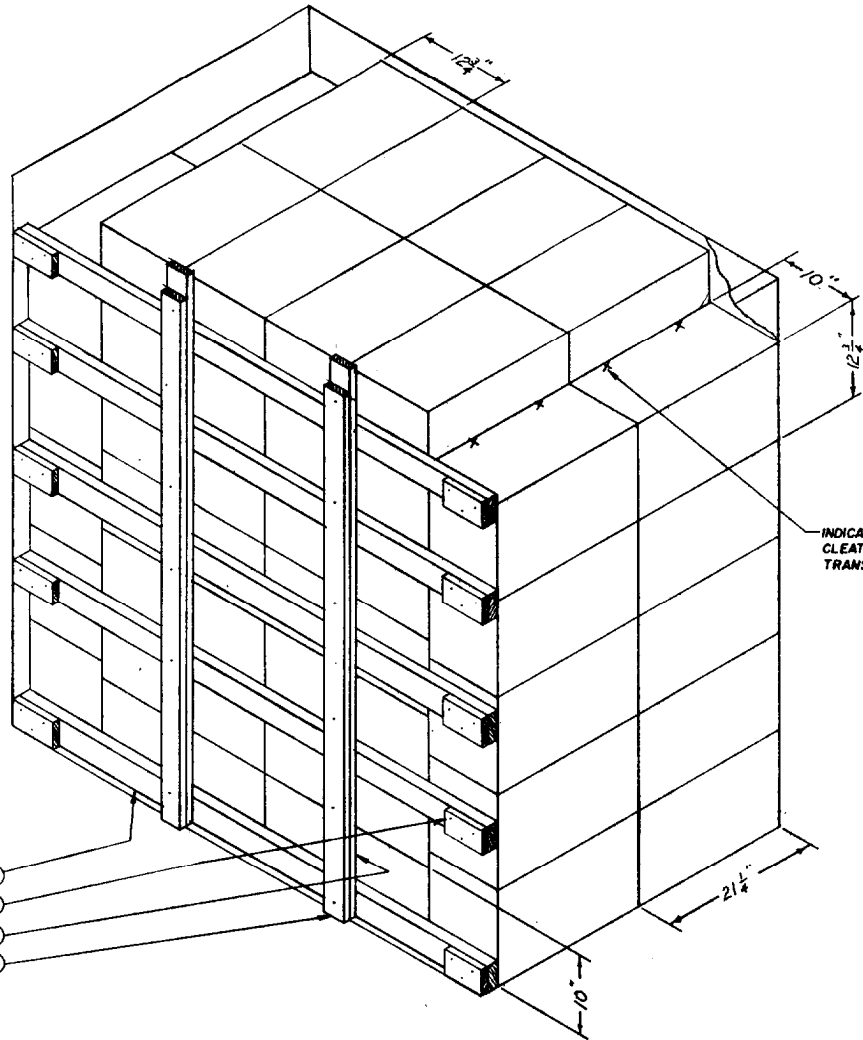
**FILLING TYPE 1 (HALF SIZE) CARGO
TRANSPORTER WITH M26 (T53)
MINE, APERS, PACKED IN WOODEN
BOX, FOR SHIPMENT "VIA CONEX"**

NOTE:— FOR LOADING AND BRACING IN GONDOLA CAR
SEE DRAWING NUMBER 19-48-7018-SP5H1

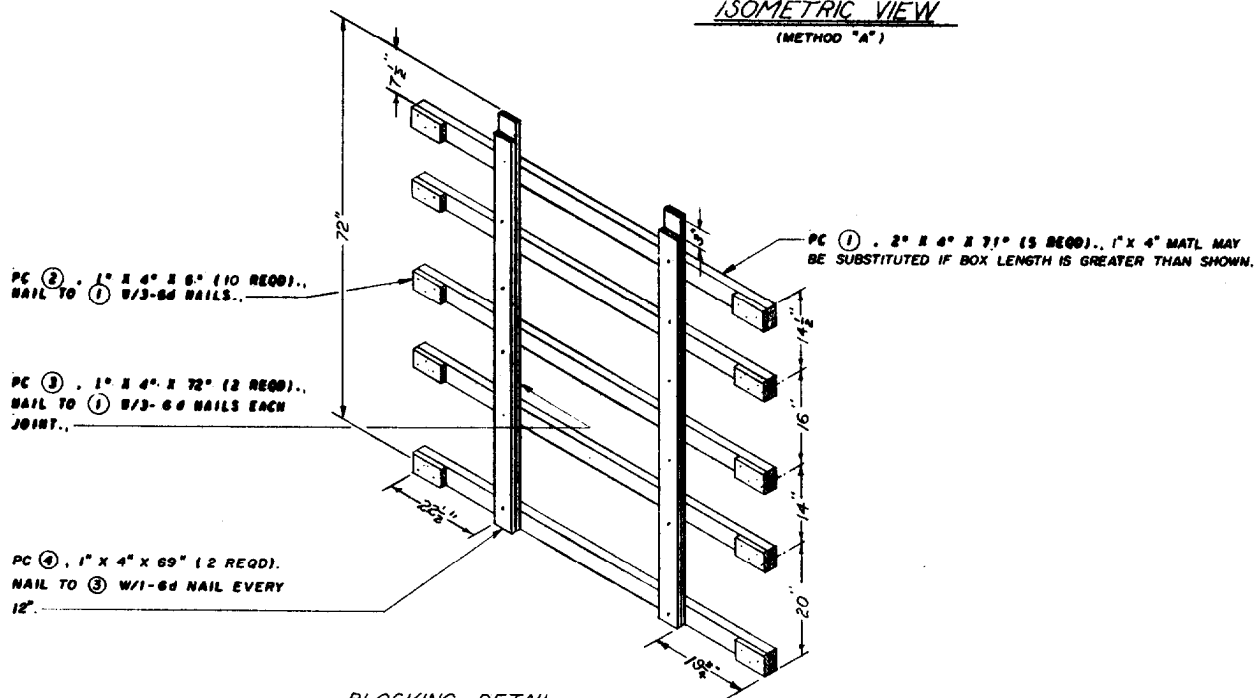
FILLING TYPE 1 (HALF SIZE) CARGO TRANSPORTER
WITH M26 (T53) MINE, APERS, PACKED IN
WOODEN BOX, FOR SHIPMENT "VIA CONEX"

DESIGNER GBF	CHECKER RHA/GWP	APPROVED DIW/ABE	IDENTIFIED <i>Ralph G. Marbury</i> COLONEL, ORDN CORPS, U.S.A.
REVISIONS			APPROVED BY NAME OF THE CHIEF OF ORDNANCE <i>James J. Hoctor</i> COLONEL, ORDN CORPS, U.S.A.
			APPROVED BY NAME OF THE CHIEF OF ORDNANCE <i>John P. Diarlin</i> COLONEL, ORDN CORPS, U.S.A.
			ORDNANCE CORPS U.S.A.
			1 FEBRUARY 1962
CLASS	DIVISION	DRAWING	FILE
19	48	7027	SP18A7

DO NOT SCALE



ISOMETRIC VIEW
(METHOD "A")



FILLING AND BLOCKING PROCEDURES

GENERAL NOTES

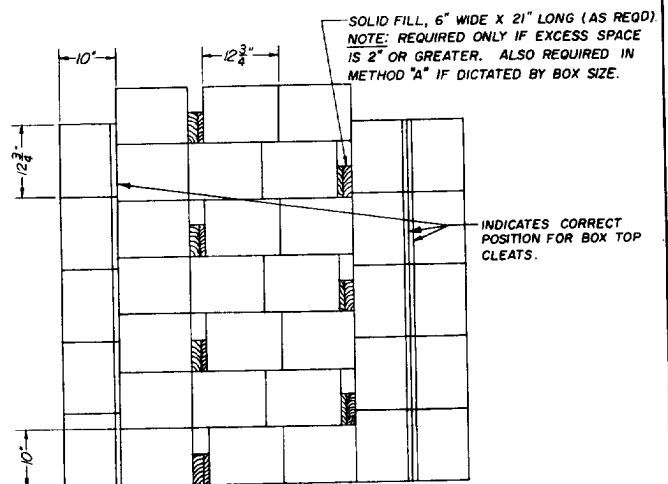
- A. LOAD BOXES IN TRANSPORTER AS SHOWN IN ISOMETRIC VIEW, PAGE 2 OR "ALTERNATIVE FILLING" DETAIL, PAGE 3. USE SOLID FILL AS REQD.
- B. ASSEMBLE PCS ① AND ② (SEE BLOCKING DETAIL) AND PLACE ASSEMBLIES IN TRANSPORTER.
- C. AS EACH ASSEMBLED PCS ① AND ② IS LOCATED VERTICALLY, NAIL PCS ③ TO PCS ① AS DIRECTED IN BLOCKING DETAIL.
- D. NAIL PC ④ TO PC ③ AS DIRECTED IN BLOCKING DETAIL.
- E. CLOSE AND LATCH TRANSPORTER DOORS AND SEAL AS REQUIRED.

CAUTION:

FIELD CHECK FOR THICKNESS OF PCS ② & ④ TO ASSURE TIGHT FIT OF BLOCKING BETWEEN LADING AND TRANSPORTER DOORS. ADJUST AS REQUIRED.

- A. THIS DRAWING IMPLEMENTS AR 53-106.
- B. FILLING AND BLOCKING PROCEDURES ARE BASED ON CARGO TRANSPORTERS, TYPE 1 (HALF SIZE) INSIDE DIMENSIONS 45' L X 71' W X 72' H. MILITARY SPECIFICATION MIL-D-21560.
- C. FOR DETAIL OF THE WINE, APERS, BOX SEE DRAWING NO. 8822122 GROSS WEIGHT - 60 LBS (APPROX). BOX DIMENSIONS (APPROX) 21 1/2" L X 12 3/4" W X 10" H. CUBIC FEET 1.6.
- D. LADING WEIGHT, INCLUDING DUNNAGE, MUST NOT EXCEED 9,000 LBS. IF A PARTIAL LOAD IS ACCOMPLISHED, LADING MUST BE BLOCKED AND BRACED AGAINST MOVEMENT IN ALL THREE (3) DIRECTIONS BY METHODS EQUAL TO THOSE SHOWN.

<u>BILL OF MATERIAL</u>		
LUMBER	LINEAL FEET	BOARD FEET
1" X 4"	29	10
2" X 4"	30	20
NAILS	NO. REQD	POUNDS
6d (2")	72	1/2
FOR METHOD "B" FILLING ADD 26 BOARD FEET OF LUMBER.		



ALTERNATIVE FILLING

(METHOD "B")

METHOD "A" IS THE PREFERRED LOADING; HOWEVER, BECAUSE OF VARYING BOX DIMENSIONS, WIDTH OF BOXES MUST BE FIELD CHECKED TO ASSURE THEIR FIT ACROSS WIDTH OF TRANSPORTER.

MATERIAL SPECIFICATIONS

- LUMBER: SEE PARAGRAPH 3400, ORDN 3-4, VOL 2.
- NAILS: COMM., CEMENT COATED, FED SPEC FF-N-106.
- ALT: ANNULAR-RIBB TYPE NAIL OF SAME SIZE.

LOAD AS SHOWN

ITEM	METHOD "A" QUANTITY	WEIGHT
BOXES	76	4,360 LBS (APPROX)
DUNNAGE		76 LBS
	TOTAL WEIGHT	4,436 LBS
ITEM	METHOD "B" QUANTITY	WEIGHT
BOXES	72	4,320 LBS (APPROX)
DUNNAGE		141 LBS
	TOTAL WEIGHT	4,461 LBS