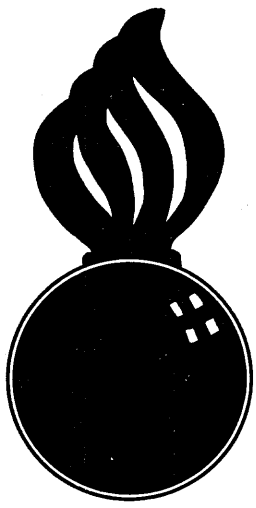


APPROVED  
 BUREAU OF EXPLOSIVES  
*A. J. Grassmuck*  
 DATE 4/24/62 INSPECTOR

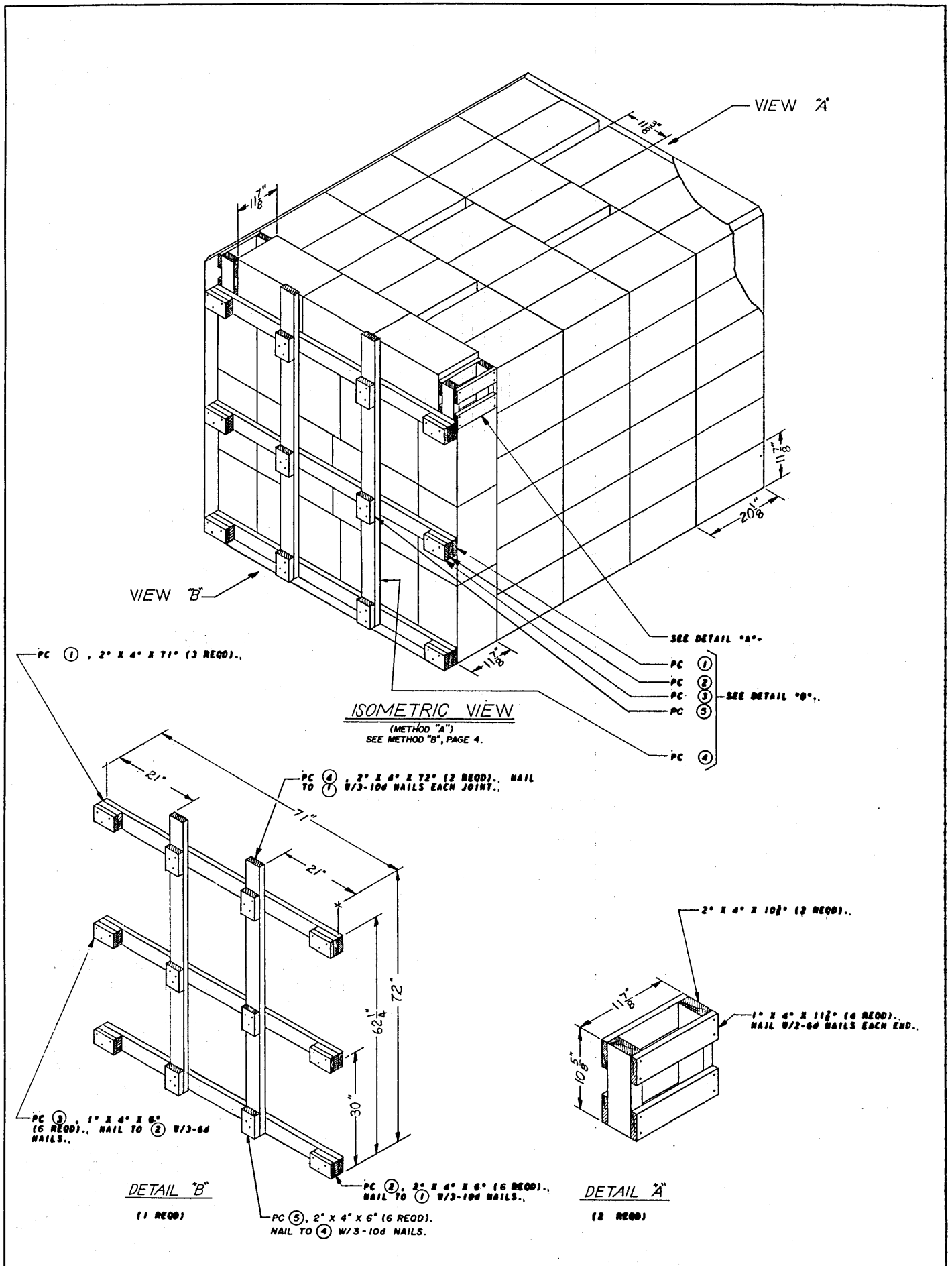


*FILLING TYPE 2 (STANDARD) CARGO  
 TRANSPORTER WITH M33 SERIES  
 GRENADE, PACKED IN WOODEN BOX,  
 FOR SHIPMENT "VIA CONEX"*

NOTE:— FOR LOADING AND BRACING IN GONDOLA CAR  
 SEE DRAWING NUMBER 19-48-7018-SP5H1

FILLING TYPE 2 (STANDARD) CARGO TRANSPORTER WITH M33 SERIES GRENADE, PACKED IN WOODEN BOX, FOR SHIPMENT "VIA CONEX"			
DRAFTSMAN <i>JDS</i>	TRACER	ENGINEER <i>Diw/ADD</i>	SUBMITTED <i>Ralph G. Mubert</i>
CHECKER <i>RHA IGWP</i>	CHECKER	ENGINEER	<i>COLONEL ORN. CORPS U.S.A.</i>
REVISIONS			EXAMINED <i>James I Hoctor</i>
			<i>ORD. CORPS U.S.A.</i>
			APPROVED BY ORDER OF THE CHIEF OF ORDNANCE <i>John P. Fisk</i>
			<i>ORD. CORPS U.S.A.</i>
			ORDNANCE CORPS U.S.A.
			1 FEBRUARY 1962
			CLASS DIVISION DRAWING FILE
			19 48 7026 SP 16A6

DO NOT SCALE



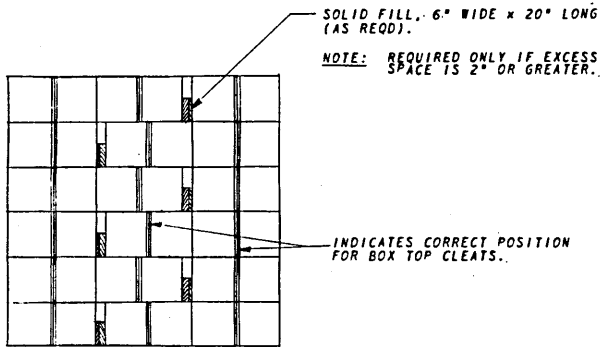
## FILLING AND BLOCKING PROCEDURES

(METHOD "A")

- A., LOAD BOXES IN TRANSPORTER AS SHOWN IN ISOMETRIC VIEW, PAGE 2., POSITION SOLID FILL AS FILLING PROGRESSES.
- B., ASSEMBLE DETAIL "A" AND POSITION AS SHOWN.
- C., LOCATE AND NAIL PCS (2) TO PCS (1)..
- D., LOCATE AND NAIL PCS (3) TO PCS (2)..
- E., AS EACH ASSEMBLED PCS (1), (2) & (3) IS LOCATED VERTICALLY (SEE DETAIL "B", PAGE 2, FOR PROPER SPACING) NAIL PCS (4) TO PCS (1)..
- F., LOCATE AND NAIL PCS (5) TO PCS (4)..
- G., CLOSE AND LATCH TRANSPORTER DOORS AND SEAL AS REQUIRED..

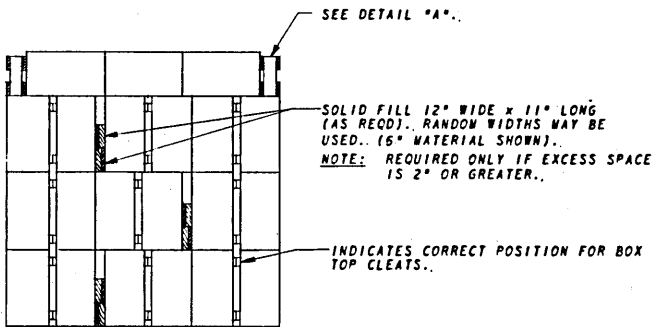
**CAUTION:**

FIELD CHECK DIMENSIONS OF DETAIL "B" TO ASSURE TIGHT FIT OF BLOCKING BETWEEN LADING AND TRANSPORTER DOORS.. ADJUST AS REQUIRED.. IF BOX LENGTH AND/OR WIDTH IS GREATER THAN SHOWN, PCS (2) AND (4) AND/OR PC (1) MAY BE CHANGED TO 1" X 4" MATERIAL. CAUTION: IF PCS ARE CHANGED, DO NOT DRIVE NAILS INTO BOXES WHEN NAILING PCS (2) AND (4).



VIEW "A"

(METHOD "A")



VIEW "B"

(METHOD "A")

BILL OF MATERIAL (METHOD "A")

LUMBER	LINEAL FEET	BOARD FEET
1" X 4"	11	4
2" X 4"	40	27
NAILS	NO. REQD	POUNDS
6d (2")	50	1/2
10d (3")	54	1/4
SOLID FILL - AS REQD (REF - 69 BD FT AS SHOWN)		

## GENERAL NOTES

- A., THIS DRAWING IMPLEMENTS AR 55-168..
- B., FILLING & BLOCKING PROCEDURES SHOWN ARE BASED ON CARGO TRANSPORTERS, TYPE 2, STANDARD. INSIDE DIMENSIONS - 96 1/2" LONG X 71" WIDE X 72" HIGH.. MILITARY SPECIFICATION MIL-D-11800E..
- C., FOR DETAIL OF GRENADE BOX SEE DRAWING NO., B900492. GROSS WEIGHT - 32 LBS., (APPROX).. BOX DIMENSIONS (APPROX) 20 1/2" LONG X 11 1/2" WIDE X 11 1/2" HIGH.. CUBIC FEET 1.6..
- D., LADING WEIGHT, INCLUDING DUNNAGE, MUST NOT EXCEED 9,000 POUNDS.. IF A PARTIAL LOAD IS ACCOMPLISHED, LADING MUST BE BLOCKED AND BRACED AGAINST MOVEMENT IN ALL THREE (3) DIRECTIONS BY METHODS EQUAL TO THOSE SHOWN.

## MATERIAL SPECIFICATIONS

LUMBER: SEE PARAGRAPH 5400, ORDN 3-4, VOL 2..  
 NAILS: COMMON, CEMENT COATED, FED SPEC FF-N-105..  
 ALT: ANNULAR-RING TYPE NAIL OF SAME SIZE..

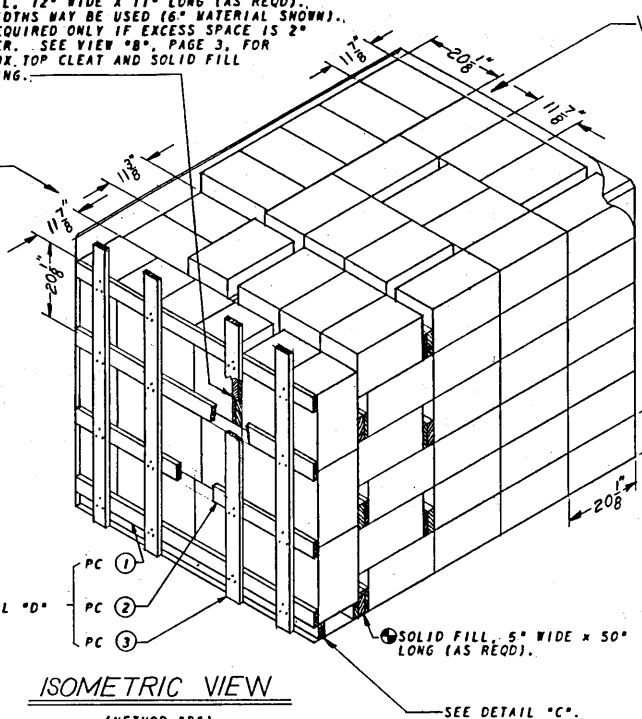
## LOAD AS SHOWN

ITEM	(METHOD "A") QUANTITY	WEIGHT
BOXES	165	8,500 LBS (APPROX)
DUNNAGE		251 LBS
TOTAL WEIGHT		8,931 LBS *

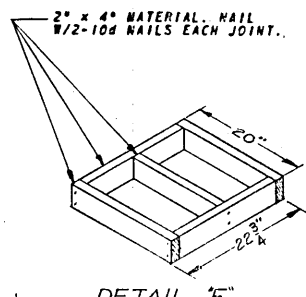
\* THE ACTUAL SHIPPING WEIGHT MAY DEVIATE BECAUSE OF VARIANCE IN BOX WEIGHTS, SEE NOTE "D".

SOLID FILL, 12" WIDE X 11" LONG (AS REQD).  
RANDOM WIDTHS MAY BE USED (6" MATERIAL SHOWN).  
NOTE: REQUIRED ONLY IF EXCESS SPACE IS 2"  
OR GREATER. SEE VIEW "B", PAGE 3, FOR  
PROPER BOX TOP CLEAR AND SOLID FILL  
POSITIONING.

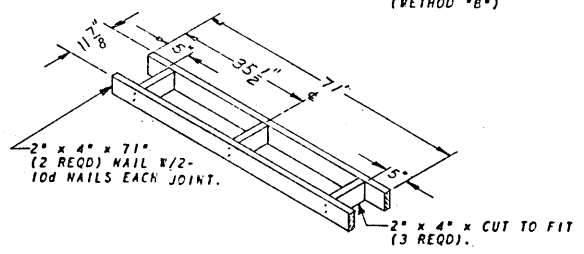
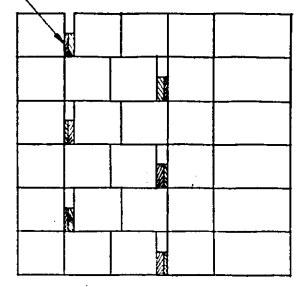
VIEW "D"



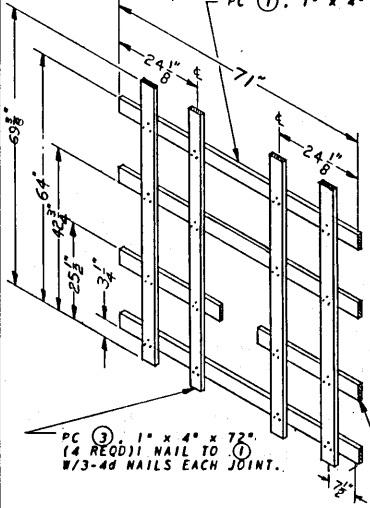
VIEW "C"



SOLID FILL, 6" WIDE X 20" LONG  
(AS REQD).  
NOTE: REQUIRED ONLY IF EXCESS  
SPACE IS 2" OR GREATER.



METHOD "A" IS THE PREFERRED FILLING; HOWEVER,  
BECAUSE OF VARYING BOX DIMENSIONS, WIDTH OF BOXES  
MUST BE FIELD CHECKED TO ENSURE THEIR FIT IN HEIGHT  
OF TRANSPORTER. PC ①, 1" x 4" x 71" (3 REQD).



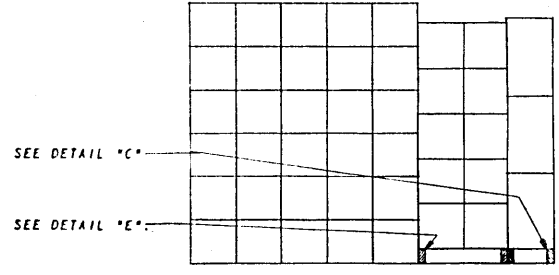
FILLING AND BLOCKING PROCEDURES

- (METHOD "B")
- A. LOAD BOXES IN TRANSPORTER AS SHOWN IN ISOMETRIC VIEW. POSITION SOLID FILL AS FILLING PROGRESSES.
  - B. ASSEMBLE DETAILS "C" AND "E" AND POSITION IN TRANSPORTER AS SHOWN.
  - C. ASSEMBLE PCS ② AND ③ (SEE DETAIL "D" FOR PROPER SPACING).
  - D. AS EACH PIECE ① IS LOCATED VERTICALLY (SEE DETAIL "D" FOR PROPER SPACING) NAIL PCS ③ IN POSITION SHOWN.
  - E. CLOSE AND LATCH TRANSPORTER DOORS AND SEAL AS REQUIRED.

CAUTION:

FIELD CHECK THICKNESS OF SOLID FILL TO ASSURE TIGHT FIT OF  
BLOCKING BETWEEN LADING AND TRANSPORTER DOORS. ADJUST AS  
REQUIRED.

BILL OF MATERIAL		
LUMBER	LINEAL FEET	BOARD FEET
1" x 4"	47	16
2" x 4"	22	15
NAILS	NO. REQD	POUNDS
4d (1 1/2")	24	1
10d (3")	24	1
SOLID FILL - AS REQD (REF: 106.80 FT AS SHOWN).		



LOAD AS SHOWN

ITEM	QUANTITY (METHOD "B")	WEIGHT
BOXES	154	8,005 LBS (APPROX)
DUNNAGE		344 LBS
TOTAL WEIGHT		8,352 LBS *

\* SEE NOTE NEAR BOTTOM OF PAGE 3.