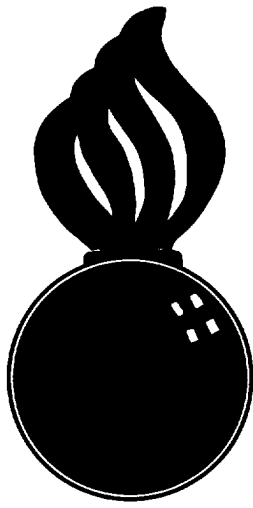


APPROVED
 BUREAU OF EXPLOSIVES
d. J. Grassmuck
 DATE 4/24/62 INSPECTOR

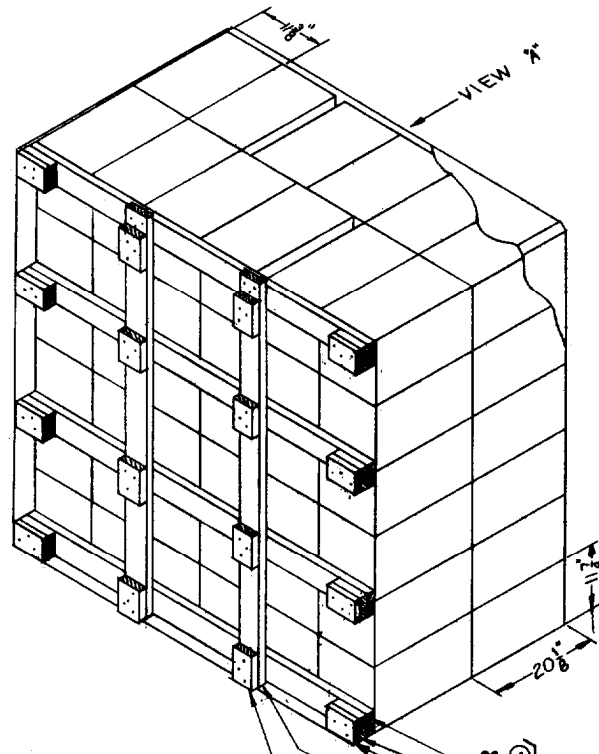


**FILLING TYPE 1 (HALF SIZE) CARGO
 TRANSPORTER WITH M33 SERIES
 GRENADE, PACKED IN WOODEN BOX,
 FOR SHIPMENT "VIA CONEX"**

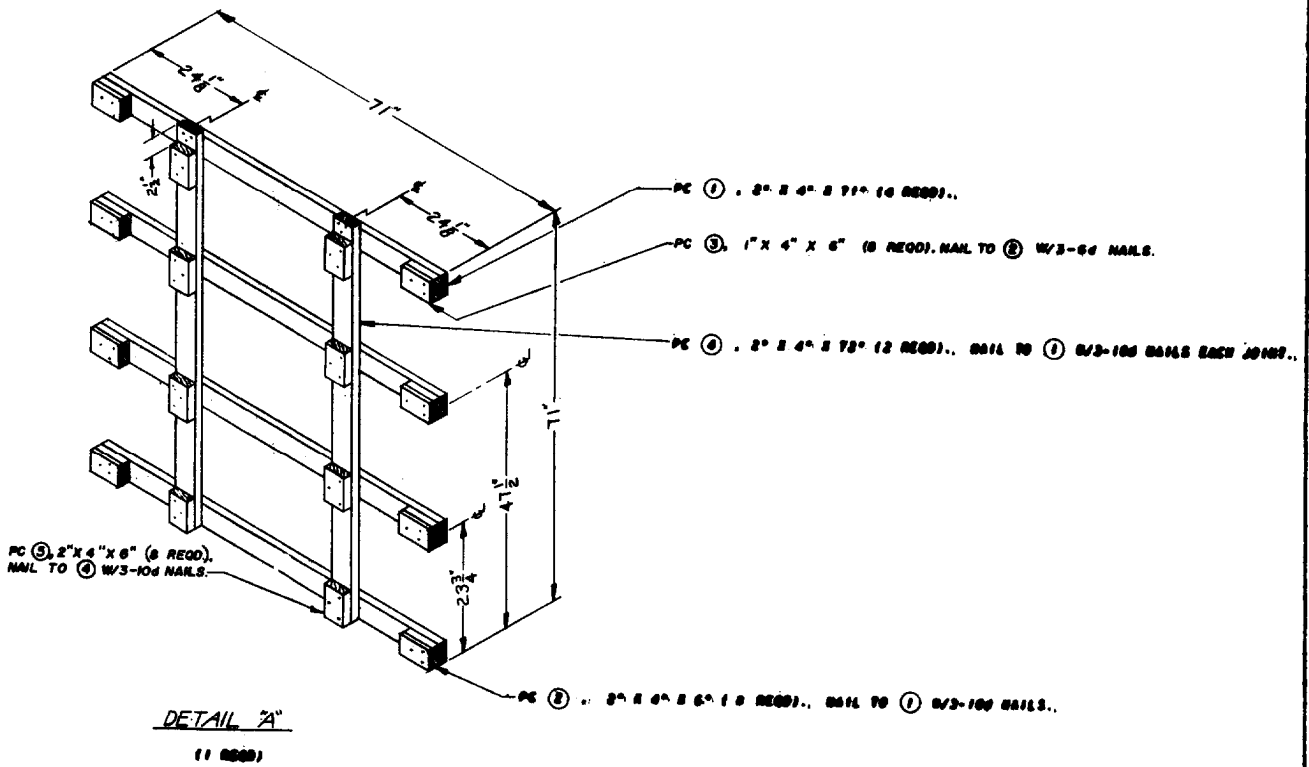
**NOTE:— FOR LOADING AND BRACING IN GONDOLA CAR
 SEE DRAWING NUMBER 19-48-7018-SP5H1**

FILLING TYPE 1 (HALF SIZE) CARGO TRANSPORTER WITH M33 SERIES GRENADE, PACKED IN WOODEN BOX, FOR SHIPMENT "VIA CONEX"			
DRAFTSMAN JDS	TRACER	REVISIONS DIW/ABG	DESIGNED BY <i>Ralph G. Mackenzie</i> COLONEL, ORDN. CORPS, U.S.A.
CHECKER RHA/GWP	CHECKER	REVISIONS	EXAMINED BY <i>James I. Hactor</i> ORDN. CORPS, U.S.A.
REVISIONS			APPROVED BY ORDER OF THE CHIEF OF ORDNANCE <i>John P. ...</i> ORDN. CORPS, U.S.A.
			ORDNANCE CORPS U.S.A.
			1 FEBRUARY 1962
CLASS	DIVISION	DRAWING	FILE
19	48	7025	SP 16A5

DO NOT SCALE



ISOMETRIC VIEW
(METHOD "A")
SEE METHOD "B", PAGE 4.



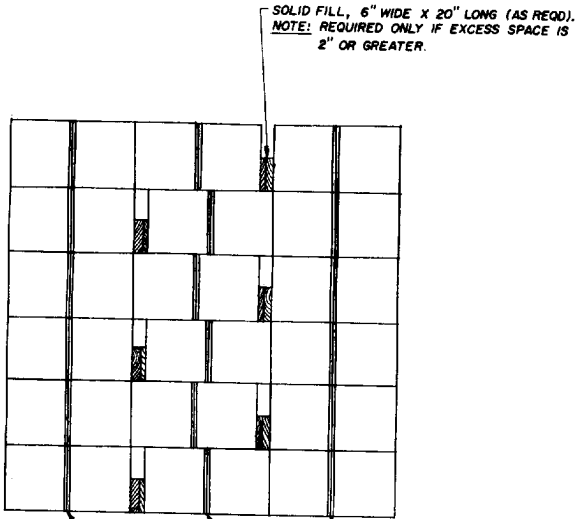
FILLING AND BLOCKING PROCEDURES

(METHOD "A")

- A.. LOAD BOXES IN TRANSPORTER AS SHOWN IN ISOMETRIC VIEW, PAGE 2.. POSITION SOLID FILL AS FILLING PROGRESSES.
- B.. LOCATE AND NAIL PCS ② TO PCS ① ..
- C.. LOCATE AND NAIL PCS ③ TO PCS ② ..
- D.. AS EACH ASSEMBLED PCS ①, ② & ③ IS LOCATED VERTICALLY (SEE DETAIL "A", PAGE 2, FOR PROPER SPACING) NAIL PCS ④ TO PCS ① ..
- E. LOCATE AND NAIL PCS ⑤ TO PCS ④ ..
- F. CLOSE AND LATCH TRANSPORTER DOORS AND SEAL AS REQUIRED.

CAUTION:

FIELD CHECK DIMENSIONS OF DETAIL "A" TO ASSURE TIGHT FIT OF BLOCKING BETWEEN LADING AND TRANSPORTER DOORS.. ADJUST AS REQUIRED. IF BOX LENGTH IS GREATER THAN SHOWN, PCS ② AND ④ AND/OR PC ① MAY BE CHANGED TO 1" X 4" MATERIAL. CAUTION: IF PC ① IS CHANGED, DO NOT DRIVE NAILS INTO BOXES WHEN NAILING PCS ② AND ④



INDICATES CORRECT POSITION FOR BOX TOP CLEATS.

VIEW "A"

(METHOD "A")

BILL OF MATERIAL

LUGGER	LINEAL FEET	BOARD FEET
1" X 4"	4	2
2" X 4"	44	30
NAILS	NO.. REQD	POUNDS
6d (2")	24	1/4
10d (3")	72	1 1/4

SOLID FILL - AS REQD (REF - 30 BD FT AS SHOWN)

GENERAL NOTES

- A.. THIS DRAWING IMPLEMENTS AR 55-166..
- B.. FILLING & BLOCKING PROCEDURES SHOWN ARE BASED ON CARGO TRANSPORTERS, TYPE 1, (HALF SIZE).. INSIDE DIMENSIONS - 45" LONG X 71" WIDE X 72" HIGH MILITARY SPECIFICATION MIL-B-21560..
- C.. FOR DETAIL OF GRENADE BOX SEE DRAWING NO., 8900492. GROSS WEIGHT - 52 LBS (APPROX).. BOX DIMENSIONS (APPROX) 20 1/2" LONG X 11 1/2" WIDE X 11 1/2" HIGH.. CUBIC FEET 1.6.
- D.. LADING WEIGHT, INCLUDING DUNNAGE, MUST NOT EXCEED 9,000 POUNDS.. IF A PARTIAL LOAD IS ACCOMPLISHED, LADING MUST BE BLOCKED AND BRACED AGAINST MOVEMENT IN ALL THREE (3) DIRECTIONS BY METHODS EQUAL TO THOSE SHOWN..

MATERIAL SPECIFICATIONS

LUGGER: SEE PARAGRAPH 3400, DDDM 3-4, VOL 2..

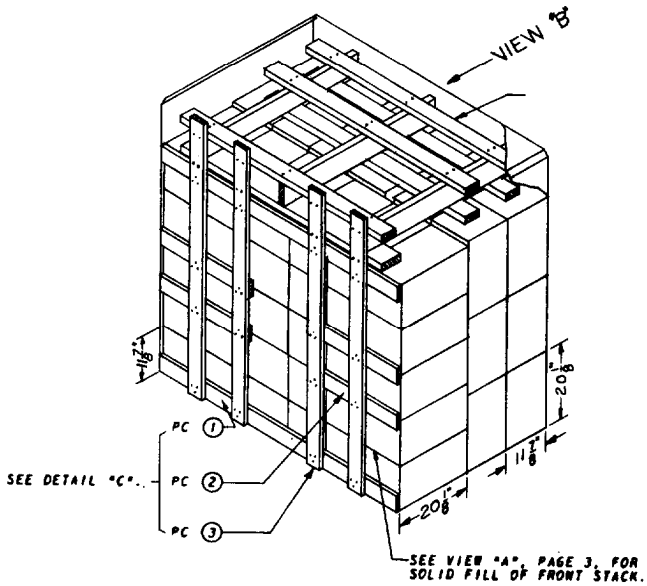
NAILS: COMMON, CEMENT-COATED, FED SPEC FF-N-105..

ALT: ANNULAR-RING TYPE NAIL OF SAME SIZE..

LOAD AS SHOWN

ITEM	QUANTITY	WEIGHT
BOXES	72	3,744 LBS (APPROX)
DUNNAGE		157 LBS
TOTAL WEIGHT		3,901 LBS *

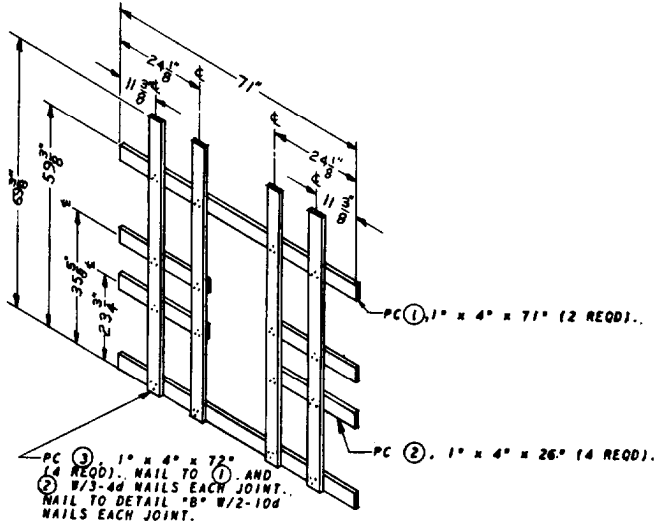
*THE ACTUAL SHIPPING WEIGHT MAY DEVIATE BECAUSE OF VARIANCE IN BOX WEIGHTS, SEE GENERAL NOTE "D".



ISOMETRIC VIEW

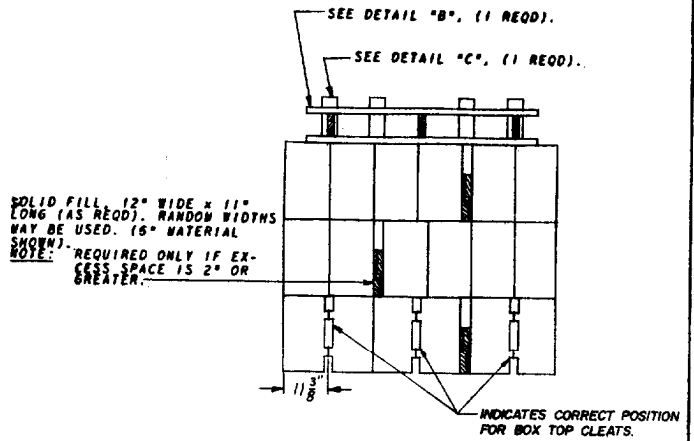
(METHOD "B")

METHOD "A" IS THE PREFERRED FILLING; HOWEVER, BECAUSE OF VARYING BOX DIMENSIONS, WIDTH OF BOXES MUST BE FIELD CHECKED TO ASSURE THEIR FIT IN HEIGHT OF TRANSPORTER.

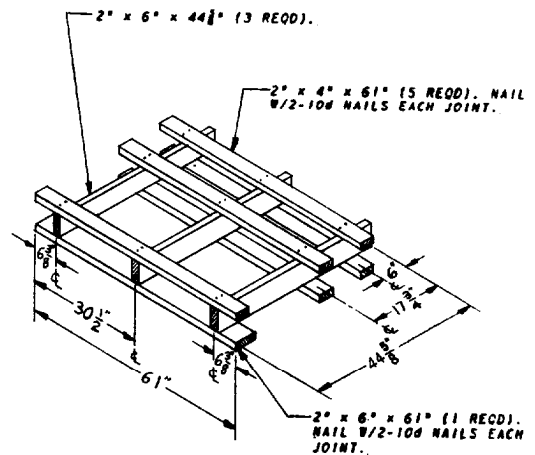


DETAIL "C"

(1 REQD)



VIEW "B"



DETAIL "B"

(1 REQD)

FILLING AND BLOCKING PROCEDURES

(METHOD "B")

- A. LOAD BOXES IN TRANSPORTER AS SHOWN IN ISOMETRIC VIEW. POSITION SOLID FILL AS FILLING PROGRESSES.
- B. ASSEMBLE DETAIL "B" AND POSITION IN TRANSPORTER AS SHOWN.
- C. ASSEMBLE PCS ② AND ③ (SEE DETAIL "C" FOR PROPER SPACING).
- D. AS EACH PIECE ① IS LOCATED VERTICALLY (SEE DETAIL "C" FOR PROPER SPACING) NAIL PCS ③ IN POSITION SHOWN.
- E. CLOSE AND LATCH TRANSPORTER DOORS AND SEAL AS REQUIRED.

CAUTION:

FIELD CHECK DIMENSIONS OF DETAIL "C" TO ASSURE TIGHT FIT OF BLOCKING BETWEEN LADING AND TRANSPORTER DOORS. ADJUST AS REQUIRED.

BILL OF MATERIAL (METHOD "B")		
LUMBER	LINEAL FEET	BOARD FEET
1" x 4"	45	15
2" x 4"	26	18
2" x 6"	17	17
NAILS	NO. REQD	POUNDS
4d (1 1/2")	48	1
10d (3")	52	1
SOLID FILL - AS REQD (REF - 32 BD., FT. AS SHOWN)		

LOAD AS SHOWN

(METHOD "B")

ITEM	QUANTITY	WEIGHT
BOXES	66	3,432 LBS (APPROX)
DUNNAGE		207 LBS
TOTAL WEIGHT		3,639 LBS *

* SEE NOTE NEAR BOTTOM OF PAGE 3.