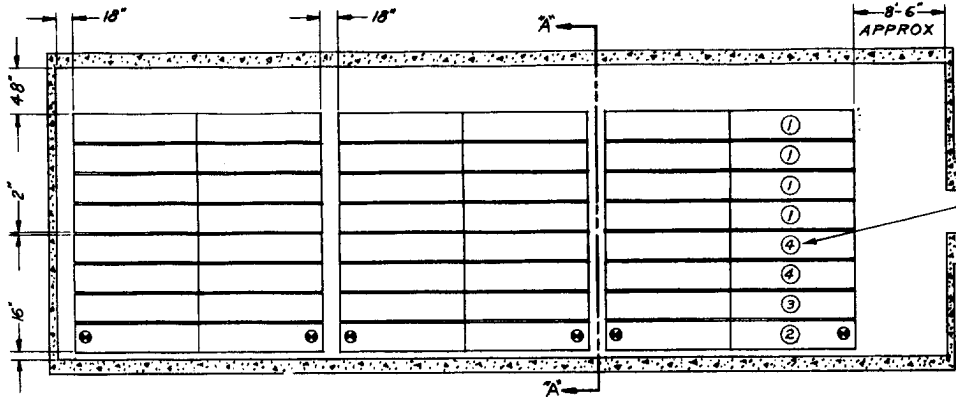


**STORAGE IN 60' & 80' IGLOO MAGAZINES
OF CBU ITEMS PACKED IN XM468
CONTAINERS**

STORAGE IN 60' & 80' IGLOO MAGAZINES OF CBU ITEMS PACKED IN XM468 CONTAINERS			
DESIGNED BY J. D. S.	DATE 	DESIGNED BY DIW / AGD	DATE
CHECKED BY RHA/GWP	CHECKED BY 	APPROVED BY <i>Ralph G. Mulvaney</i>	DATE
REVISIONS			EXAMINED BY <i>R. E. Oubough</i>
			DATE
			APPROVED BY CHIEF OF THE CHIEF OF ORDNANCE <i>John P. ...</i>
			DATE
			ORDNANCE CORPS U.S.A.
			7 MAY 1962
			CLASS DIVISION DRAWING FILE
			19 48 7023 SP IM2

DO NOT SCALE

STORAGE AS SHOWN
80' 16L00



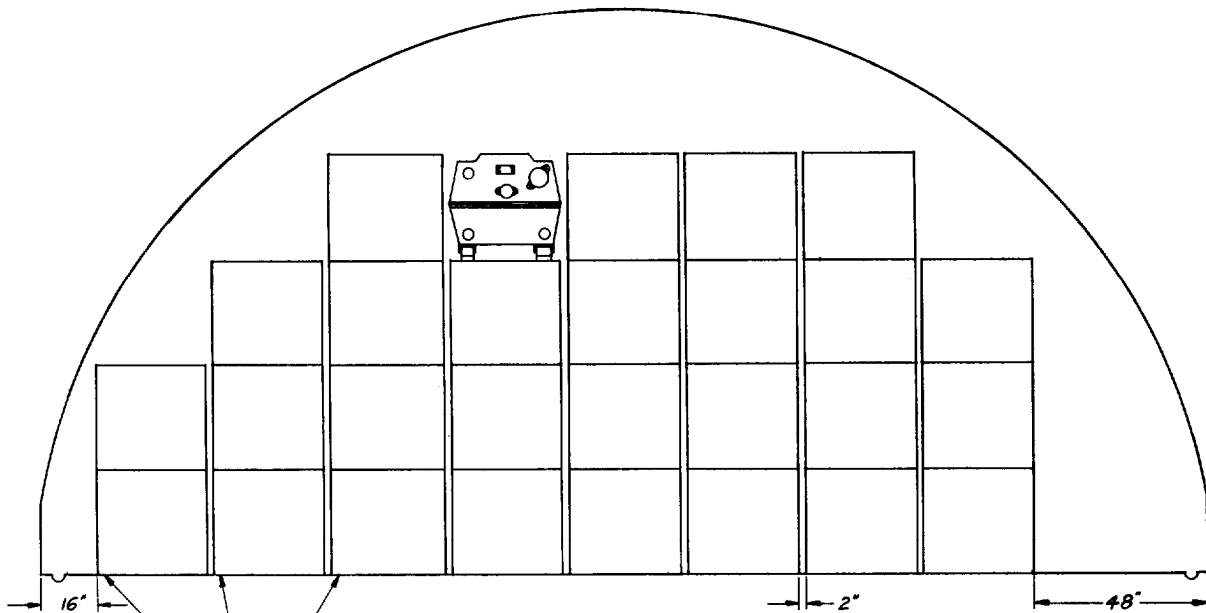
CONTAINERS (W/COR ITEMS) - 157

INDICATES NUMBER OF CONTAINERS HIGH..

PLAN VIEW

80' 16L00

① HUMIDITY INDICATOR.
SEE GENERAL NOTE 'D'.



SECTION A-A

80' & 80' 16L00
20 CONTAINERS PER STACK

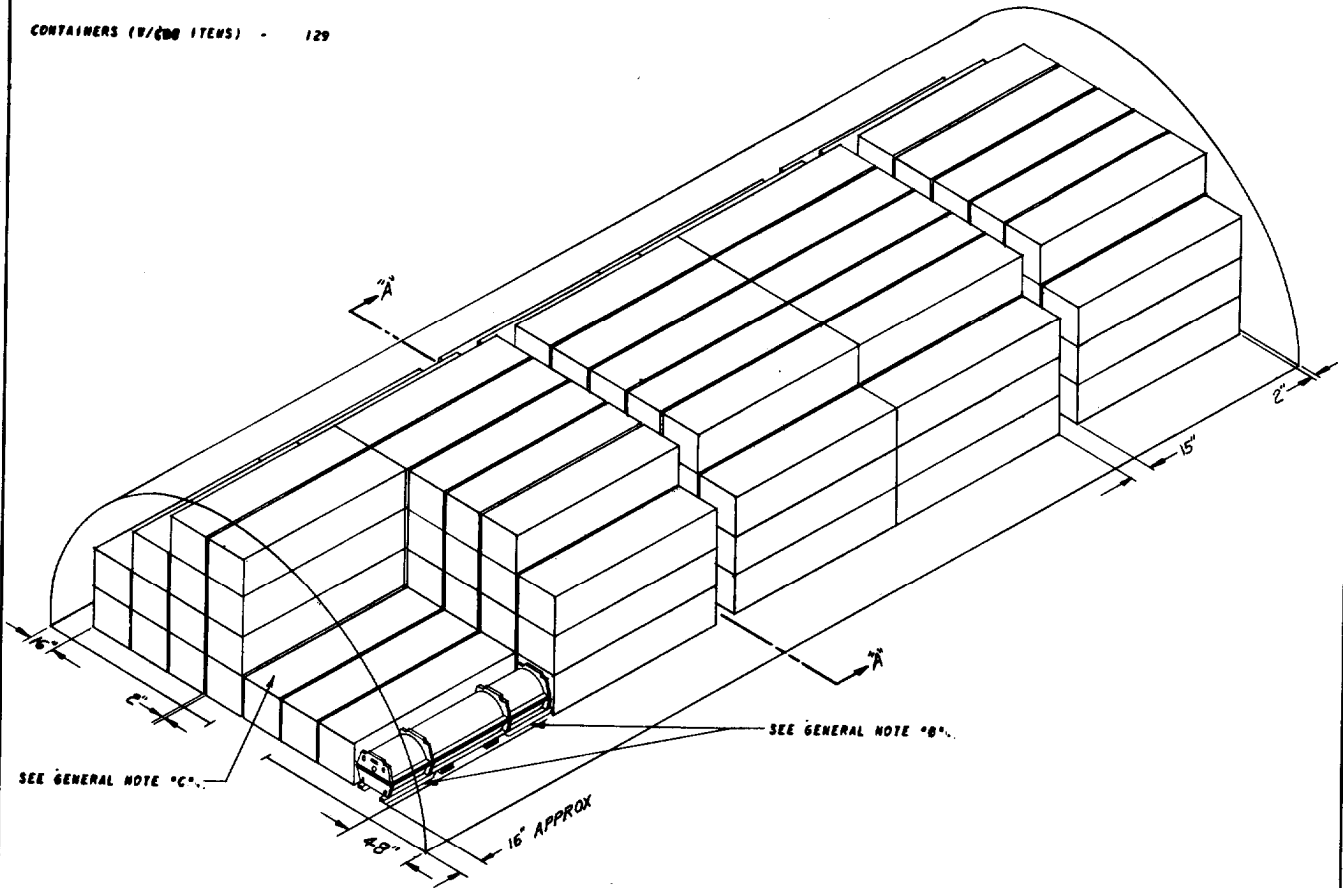
SEE GENERAL NOTE 'B'.

METHOD 'A'

STORAGE AS SHOWN

60' IGL00

CONTAINERS (W/600 ITEMS) - 129



ISOMETRIC VIEW

60' IGL00

GENERAL NOTES

- A. FOR DETAIL OF CONTAINER SEE DRAWING NO., 8846808. CONTAINER DIMENSIONS - 136" LONG X 30" WIDE X 28 1/2" HIGH. GROSS WEIGHT - 1,253 POUNDS. CU-57.3.
- B. AS REQUIRED TO CREATE VERTICAL STACKS, WOOD SHIMS (REF: 1/2" THICK), SKID LENGTH, WILL BE USED UNDER THE TWO LOW SIDE SKIDS ON EACH BOTTOM CONTAINER.
- C. ADDITIONAL CONTAINERS MAY BE STORED IF VOLUME PERMITS. STORED CONTAINERS MUST NOT CONTACT WALLS OF IGL00.
- D. HUMIDITY INDICATORS WILL FACE INSPECTION AISLE. INDICATORS IN THIRD AND FOURTH LAYERS, PAGE 4, SHOULD BE ON SAME SIDE OF STACK.
- E. AISLE DIMENSIONS SHOWN HEREIN MAY BE ADJUSTED TO SUIT LOCAL CONDITIONS AND/OR AVAILABLE MNE.
- F. STORAGE AS SHOWN HEREIN CAN BE ACCOMPLISHED BY HANDLING CONTAINERS WITH A FORK LIFT TRUCK: AS DEPICTED ON PAGES 2 AND 3 BY FILLING APPROXIMATELY ONE HALF THE WIDTH OF THE IGL00 BY HANDLING CONTAINERS FROM THE SIDE WITH STANDARD FORKS AND BY FILLING REMAINING VOLUME BY HANDLING CONTAINERS FROM THE END WITH AN OVERHEAD BOOM ATTACHMENT OR WITH SIX FOOT FORK EXTENSIONS, AND AS DEPICTED ON PAGE 4 BY HANDLING ALL CONTAINERS FROM THE SIDE WITH STANDARD FORKS OR WITH AN OVERHEAD BOOM ATTACHMENT.
- G. SELECTION OF STORAGE METHOD ('A', PAGES 2 AND 3 OR 'B', PAGE 4) BY LOCAL AUTHORITY IS DEPENDENT ON AVAILABLE MATERIAL HANDLING EQUIPMENT AND IN-STORAGE MONITORING REQUIREMENTS;

MATERIAL SPECIFICATIONS

LUMBER: SEE PARAGRAPH 5400, ORDN 3-4, VOL 2.

METHOD 'A'

AN ADDITIONAL FOUR (4) CONTAINERS MAY BE STORED IN FRONTAL AREA SIMILAR TO METHOD SHOWN ON PAGE 3.

