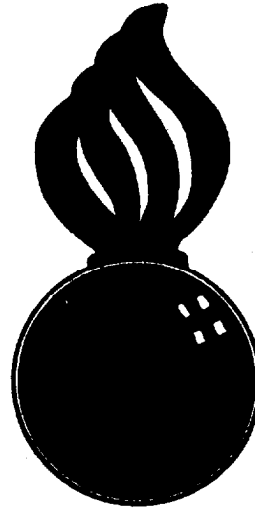


APPROVED
BUREAU OF EXPLOSIVES

R. G. Mulvaney
INSPECTOR
DATE 4/24/62



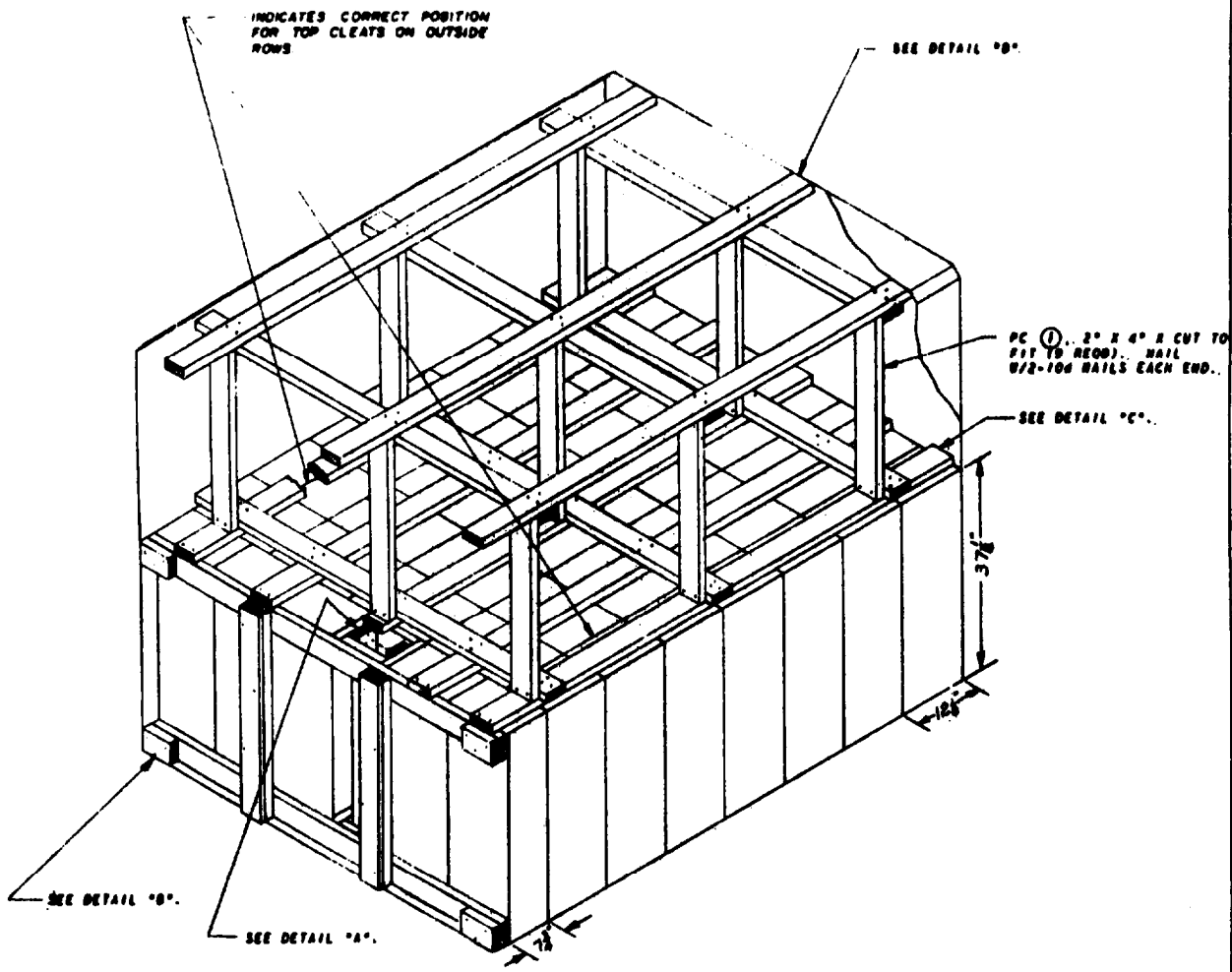
FILLING TYPE 2 (STANDARD) CARGO TRANSPORTER WITH M413, T378, & XM400 CARTRIDGE, 105MM, PACKED IN WOODEN BOX, FOR SHIPMENT "VIA CONEX"

**NOTE:-
FOR LOADING AND BRACING IN GONDOLA CARS
SEE DRAWING NUMBER 19-48-7018-SP-5H1**

TYPE 2 (STANDARD) CARGO TRANSPORTER SHOULD BE UTILIZED FOR 105MM CARTRIDGE ONLY WHEN TYPE 1 CARGO TRANSPORTERS ARE NOT AVAILABLE AND UPON SPECIFIC APPROVAL FROM THE ORDNANCE AMMUNITION COMMAND.

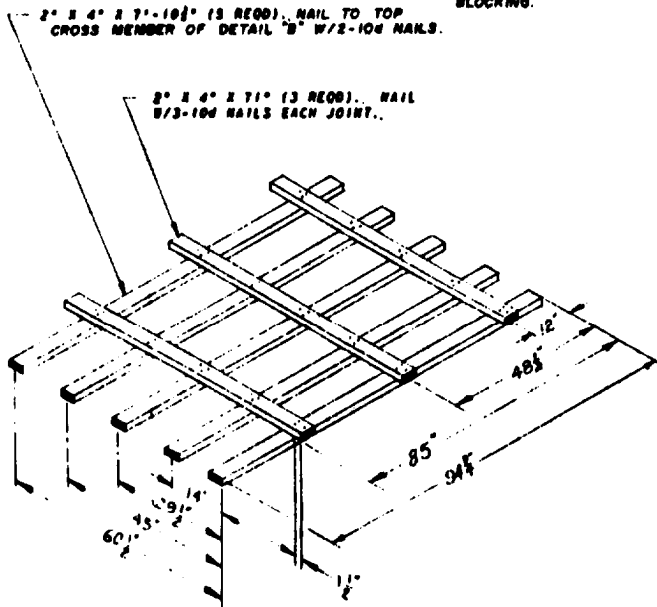
FILLING TYPE 2 (STANDARD) CARGO TRANSPORTER W/M413, T378, & XM400 CARTRIDGE, 105MM, PACKED IN WOODEN BOX, FOR SHIPMENT "VIA CONEX"			
DESIGNER <i>J.D.S.</i>	DATE	REVISED BY <i>UW/AB</i>	APPROVED BY <i>R.G. Mulvaney</i>
CHECKED BY <i>RHA/GWP</i>	DATE	REVISIONS	COLONEL <i>Ramon J. Hector</i>
			MAJOR GENERAL <i>Ramon J. Hector</i>
			ORDNANCE CORPS U.S.A.
			21 AUGUST 1961
			CLASS DIVISION DRAWING FILE
			19 48 7022 SP 15A1

DO NOT SCALE

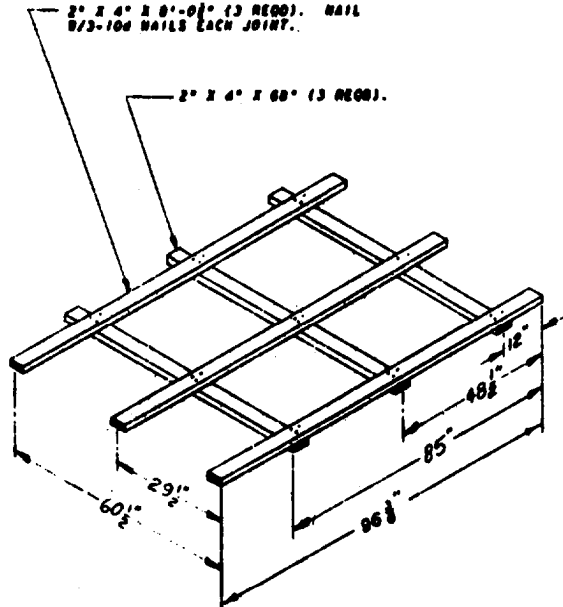


ISOMETRIC VIEW
(METHOD "A")

SEE METHOD "B", PAGE 4, FOR ALTERNATIVE FILLING AND BLOCKING.



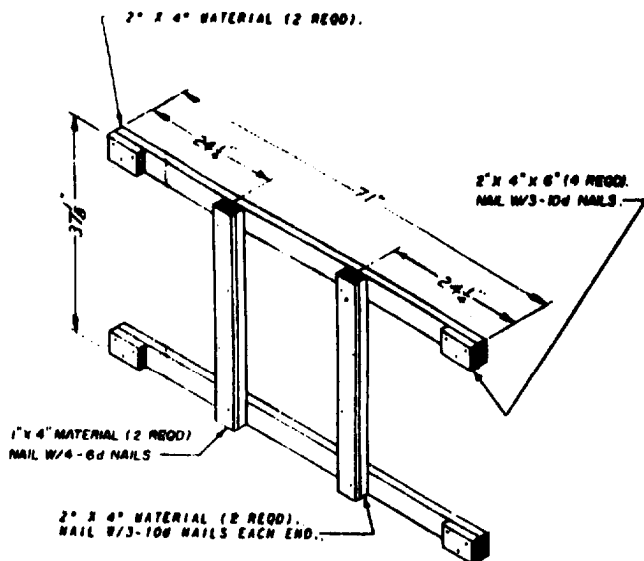
DETAIL "C"
(1 REQD) SEE NOTE ①



DETAIL "D"
(1 REQD) SEE NOTE ①

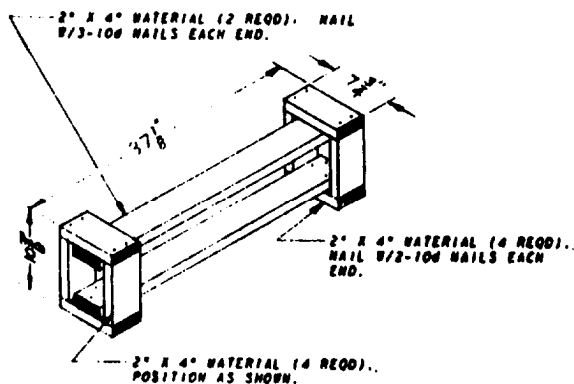
NOTE ①:
DETAILS "C" & "D"
MAY BE ASSEMBLED INSIDE THE TRANSPORTER. DO NOT DRIVE NAILS INTO AMMUNITION BOXES.

FILLING AND BLOCKING PROCEDURES
(METHOD "K")



DETAIL "B"

(1 REQD) SEE NOTE ①



DETAIL "A"

(1 REQD)

BILL OF MATERIAL (METHOD "A")		
LUMBER	LINEAL FEET	BOARD FEET
1" X 4"	7	3
2" X 4"	154	102
NAILS	NO. REQD	POUNDS
6d (2")	8	
10d (3")	170	2-3/4

MATERIAL SPECIFICATIONS

LUMBER: SEE PARAGRAPH 5400, ORDU 3-4, VOL 2.
 NAILS: COBSON, CEMENT COATED, FED SPEC FF-N-105.
 ALTERNATE: ANNULAR-RING TYPE NAIL OF SAME SIZE.

- A. LOAD BOXES IN TRANSPORTER AS SHOWN IN ISOMETRIC VIEW, PAGE 2.
- B. ASSEMBLE DETAIL "A" AND POSITION AS SHOWN.
- C. ASSEMBLE DETAIL "B" AND POSITION AS SHOWN (SEE DETAIL "B" AND NOTE ①).
- D. ASSEMBLE DETAIL "C" (SEE DETAIL "C" AND NOTE ①).
- E. ASSEMBLE DETAIL "D" (SEE DETAIL "D" AND NOTE ①).
- F. WITH DETAILS "C" AND "D" IN POSITION LOCATE AND NAIL PC ①.
- G. CLOSE AND LATCH TRANSPORTER DOORS AND SEAL AS REQUIRED.

CAUTION:

FIELD CHECK DIMENSIONS OF DETAIL "A" TO ASSURE TIGHT FIT BETWEEN BOXES, AND DIMENSIONS OF DETAIL "B" AND LENGTH OF PC ① TO ASSURE TIGHT FIT OF BLOCKING BETWEEN LADING AND TRANSPORTER DOORS AND/OR ROOF. ADJUST AS REQUIRED.

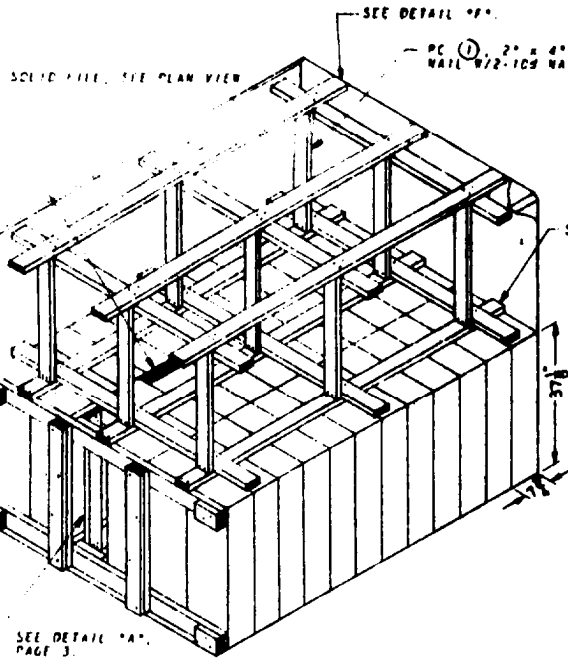
GENERAL NOTES

- A. THIS DRAWING IMPLEMENTS AR 55-166.
- B. FILLING AND BLOCKING PROCEDURES SHOWN ARE BASED ON CARGO TRANSPORTERS, TYPE 2, STANDARD, INSIDE DIMENSIONS - 96" LONG X 71" WIDE X 72" HIGH, MILITARY SPECIFICATION MIL-B-11886.
- C. FOR DETAIL OF THE 105MM PACKING BOX SEE DRAWING NO. ZB492R GROSS WEIGHT - 120 LBS (APPROX), BOX DIMENSIONS (APPROX) 37" LONG X 12" WIDE X 7" HIGH, CUBIC FEET 2.0.
- D. LADING WEIGHT, INCLUDING DUNNAGE, MUST NOT EXCEED 8,000 POUNDS. IF A PARTIAL LOAD IS ACCOMPLISHED, LADING MUST BE BLOCKED AGAINST MOVEMENT IN ALL THREE (3) DIRECTIONS BY METHODS EQUAL TO THOSE SHOWN. IF EXCESS SPACE ACROSS WIDTH OF TRANSPORTER IS 2" OR GREATER, SOLID-FILL TYPE BLOCKING SHOULD BE USED TO FILL VOID.

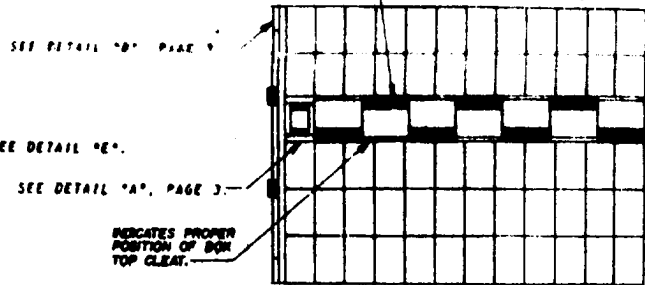
LOAD AS SHOWN
(METHOD "A")

ITEM	QUANTITY	WEIGHT
CONTAINERS	60	8,160 LBS (APPROX)
DUNNAGE		266 LBS
TOTAL WEIGHT		8,426 LBS *

* THE ACTUAL SHIPPING WEIGHT MAY DEVIATE BECAUSE OF VARIANCE IN BOX WEIGHTS. SEE GENERAL NOTE "D"



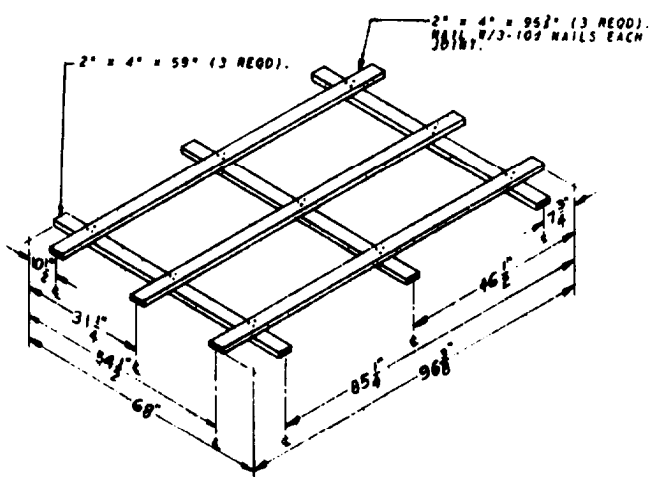
PC 2, SOLID FILL, 12" RICE, 35" LONG (43 RECD). RANDOM WIDTH MAY BE USED. 16" MATERIAL SHOWN. NOTE: REQUIRED ONLY IF EXCESS SPACE IS 2" OR GREATER.



ALTERNATIVE FILLING PLAN VIEW
(METHOD "B")

ISOMETRIC VIEW
(METHOD "A")

METHOD "A" IS THE PREFERRED FILLING, HOWEVER BECAUSE OF VARYING BOX DIMENSIONS, HEIGHT OF BOXES MUST BE FIELD CHECKED TO ASSURE THEIR FIT ACROSS WIDTH OF TRANSPORTER.



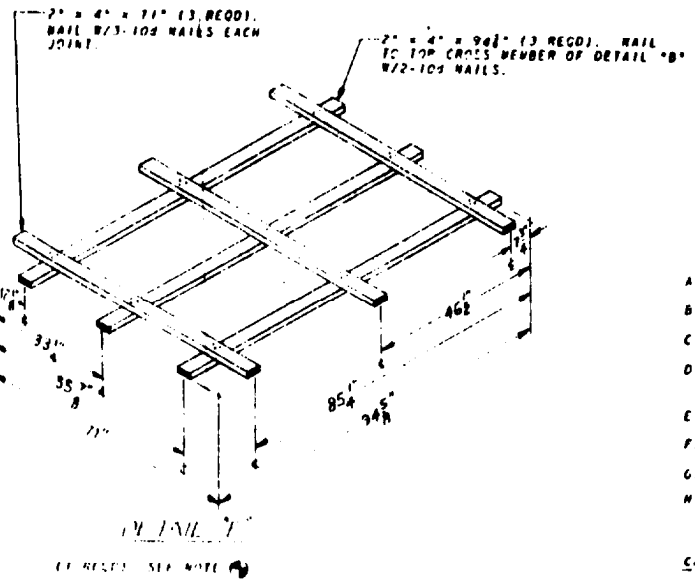
DETAIL "F"
(1 RECD) SEE NOTE 4.

FILLING AND BLOCKING PROCEDURES
(METHOD "B")

- A. LOAD BOXES IN TRANSPORTER AS SHOWN IN ISOMETRIC VIEW.
- B. POSITION SOLID FILL PC 2 AS SHOWN IN PLAN VIEW.
- C. ASSEMBLE DETAIL "A" AND POSITION AS SHOWN.
- D. ASSEMBLE DETAIL "B" AND POSITION AS SHOWN (SEE DETAIL "B", PAGE 3, AND NOTE 4).
- E. ASSEMBLE DETAIL "E" (SEE DETAIL "E" AND NOTE 4).
- F. ASSEMBLE DETAIL "F" (SEE DETAIL "F" AND NOTE 4).
- G. WITH DETAILS "E" AND "F" IN POSITION LOCATE AND NAIL PCS 1.
- H. CLOSE AND LATCH TRANSPORTER DOORS AND SEAL AS REGD.

CAUTION:

FIELD CHECK DIMENSIONS OF DETAIL "A" TO ASSURE TIGHT FIT BETWEEN BOXES, AND DIMENSIONS OF DETAIL "B" AND LENGTH OF PC 1 TO ASSURE TIGHT FIT OF BLOCKING BETWEEN LADING AND TRANSPORTER DOORS AND/OR ROOF. ADJUST AS REQUIRED.



PLAN VIEW
(1 RECD) SEE NOTE 4.

BILL OF MATERIAL (METHOD "B")

LUMBER	LINEAL FEET	BOARD FEET
2" x 4"	7	3
2" x 4"	138	92
NAILS	#0 RECD	POUNDS
#2 12"	64	3
#0 1 1/2"	148	23

SOLID FILL AS REGD (REF: 67 BD FT AS SHOWN)

NOTE 4:
DETAILS "B", "E" AND "F" MAY BE ASSEMBLED INSIDE THE TRANSPORTER. DO NOT DRIVE NAILS INTO AMMUNITION BOXES.

LOAD AS SHOWN
(METHOD "B")

ITEM	QUANTITY	WEIGHT
CONTAINERS	67	8,040 LBS (APPROX)
DUNNAGE		390 LBS
TOTAL WEIGHT		8,430 LBS *

* SEE NOTE NEAR BOTTOM OF PAGE 3.