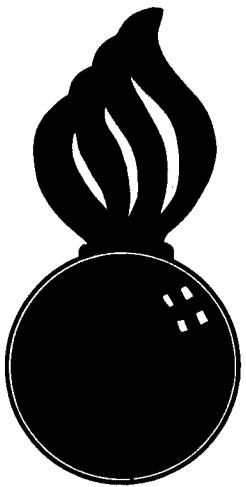


APPROVED
 BUREAU OF EXPLOSIVES
A. J. Greenmuck
 DATE 4/24/62 INSPECTOR



**FILLING TYPE 1 (HALF SIZE) CARGO
 TRANSPORTER WITH M413, T378 & XM400
 CARTRIDGE, 105MM, PACKED IN WOODEN
 BOX, FOR SHIPMENT "VIA CONEX"**

**NOTE:-
 FOR LOADING AND BRACING IN GONDOLA CARS
 SEE DRAWING NUMBER 19-48-7018-SP-5H1**

FILLING TYPE 1 (HALF SIZE) CARGO TRANSPORTER WITH M413, T378 & XM400 CARTRIDGE, 105MM, PACKED IN WOODEN BOX, FOR SHIPMENT "VIA CONEX"			
DESIGNED BY J.D.S.	TRACER DIW/ AW	REVISIONS N.E.W.	APPROVED BY <i>R. G. Mulvaney</i> COLONEL ORD. CORPS U.S.A.
CHECKED BY RHA / GWP	CHECKED BY N.E.W.	REVISIONS	STAMPED BY <i>James J. Hoctor</i> ORD. CORPS U.S.A.
			APPROVED BY ORDER OF THE CHIEF OF ORDNANCE <i>John P. Seaman</i> ORD. CORPS U.S.A.
			ORDNANCE CORPS U.S.A.
			21 AUGUST 1961
			CLASS DIVISION DRAWING FILE
			19 48 7021 SP-16 A 4

DO NOT SCALE

FILLING AND BLOCKING PROCEDURES
(METHOD "A")

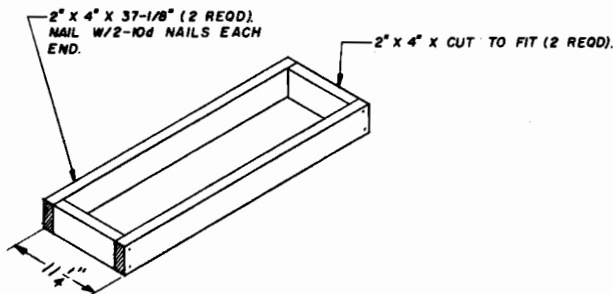
- A. LOAD BOXES IN TRANSPORTER AS SHOWN IN ISOMETRIC VIEW, PAGE 2., POSITION DETAILS "A" AND "B".
- B. AS EACH ASSEMBLED PCS ① AND ② IS LOCATED VERTICALLY, NAIL PCS ③, ④ AND ⑤ AS DIRECTED IN BLOCKING DETAIL, PAGE 2..
- C. LOCATE AND NAIL PCS ⑥ TO PCS ④.
- D. CLOSE AND LATCH TRANSPORTER DOORS AND SEAL AS REQUIRED..

CAUTION:

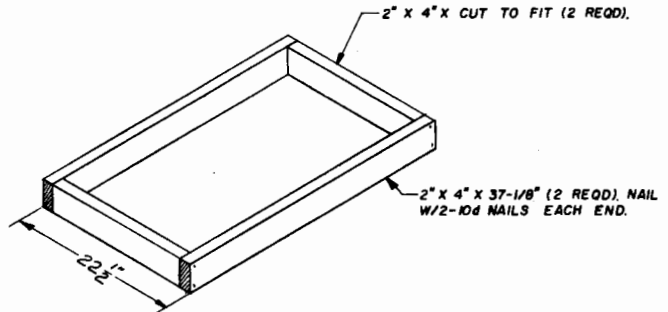
FIELD CHECK FOR LENGTH OF PCS ② TO ASSURE TIGHT FIT OF BLOCKING BETWEEN LADING AND TRANSPORTER DOORS.. ADJUST AS REQUIRED.

GENERAL NOTES

- A. THIS DRAWING IMPLEMENTS AR 55-166.
- B. FILLING & BLOCKING PROCEDURES SHOWN ARE BASED ON CARGO TRANSPORTERS, TYPE 1, (HALF SIZE) INSIDE DIMENSIONS 45" LONG X 71" WIDE X 72" HIGH.. MILITARY SPECIFICATION MIL-B-21560.
- C. FOR DETAIL OF THE 105MM PACKING BOX SEE DRAWING NO. 7549072 GROSS WEIGHT - 120 LBS (APPRX).. BOX DIMENSIONS (APPRX).. 37 1/2" LONG X 12 1/2" WIDE X 7 1/2" HIGH.. CUBIC FEET 2.0..
- D. LADING WEIGHT, INCLUDING DUNNAGE, MUST NOT EXCEED 9,000 POUNDS.. IF A PARTIAL LOAD IS ACCOMPLISHED, LADING MUST BE BLOCKED AND BRACED AGAINST MOVEMENT IN ALL THREE (3) DIRECTIONS BY METHODS EQUAL TO THOSE SHOWN.. IF EXCESS SPACE ACROSS WIDTH OF TRANSPORTER IS 2" OR GREATER, SOLID FILL TYPE BLOCKING SHOULD BE USED TO FILL VOID.

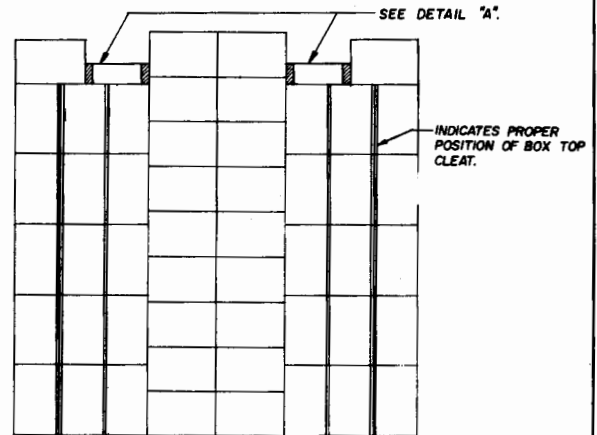


DETAIL "A"
(2 REOD)



DETAIL "B"
(1 REOD)

BILL OF MATERIAL (METHOD "A")		
LUMBER	LINEAL FEET	BOARD FEET
1" X	22	8
2" X	65	44
NAIL	NO.. REQD	POUNDS
6d (2")	36	1/2
10d (3")	90	1-1/2



VIEW "A"

STACKING PATTERN
(METHOD "A")

METHOD "A" IS THE PREFERRED FILLING; HOWEVER, IF VARYING BOX DIMENSIONS PROHIBIT USING THIS METHOD, SEE METHOD "B", PAGE 4, FOR ALTERNATIVE FILLING AND BLOCKING.

MATERIAL SPECIFICATIONS

LUMBER: SEE PARAGRAPH 5400, ORDN 3-4, VOL 2.,
NAILS: COMMON, CEMENT-COATED, RED SPEC FF-N-105.,
ALTERNATE: ANNULAR-RING TYPE NAIL OF SAME SIZE..

LOAD AS SHOWN
(METHOD "A")

ITEM	QUANTITY	WEIGHT
BOXES	54	5,480 LBS (APPRX)
DUNNAGE		132 LBS
TOTAL WEIGHT		6,612 LBS *

* THE ACTUAL SHIPPING WEIGHT MAY DEVIATE BECAUSE OF VARIANCE IN BOX WEIGHTS. SEE GENERAL NOTE "D".

FILLING AND BLOCKING PROCEDURES
(METHOD "A")

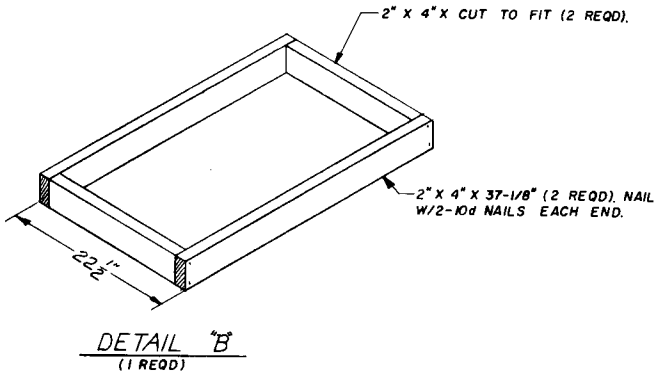
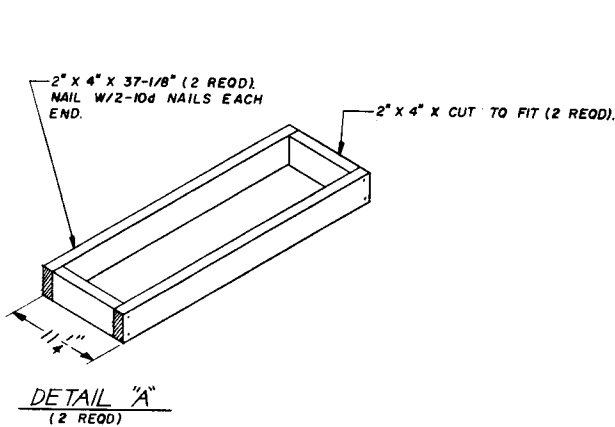
- A. LOAD BOXES IN TRANSPORTER AS SHOWN IN ISOMETRIC VIEW, PAGE 2., POSITION DETAILS "A" AND "B".
- B. AS EACH ASSEMBLED PCS ① AND ② IS LOCATED VERTICALLY, NAIL PCS ③, ④ AND ⑤ AS DIRECTED IN BLOCKING DETAIL, PAGE 2..
- C. LOCATE AND NAIL PCS ⑥ TO PCS ④.
- D. CLOSE AND LATCH TRANSPORTER DOORS AND SEAL AS REQUIRED..

CAUTION:

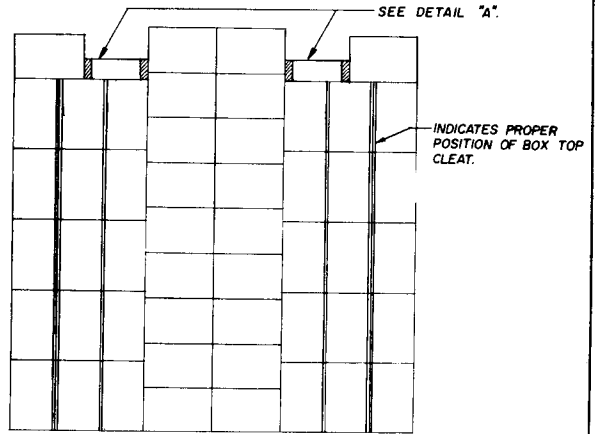
FIELD CHECK FOR LENGTH OF PCS ② TO ASSURE TIGHT FIT OF BLOCKING BETWEEN LADING AND TRANSPORTER DOORS.. ADJUST AS REQUIRED.

GENERAL NOTES

- A. THIS DRAWING IMPLEMENTS AR 55-166.
- B. FILLING & BLOCKING PROCEDURES SHOWN ARE BASED ON CARGO TRANSPORTERS, TYPE 1, (HALF SIZE) INSIDE DIMENSIONS 45" LONG X 71" WIDE X 72" HIGH.. MILITARY SPECIFICATION MIL-B-21560.
- C. FOR DETAIL OF THE 105MM PACKING BOX SEE DRAWING NO. 7549072. GROSS WEIGHT - 120 LBS (APPROX).. BOX DIMENSIONS (APPROX).. 37 1/2" LONG X 12 1/2" WIDE X 7 1/2" HIGH.. CUBIC FEET 2.0..
- D. LADING WEIGHT, INCLUDING DUNNAGE, MUST NOT EXCEED 9,000 POUNDS.. IF A PARTIAL LOAD IS ACCOMPLISHED, LADING MUST BE BLOCKED AND BRACED AGAINST MOVEMENT IN ALL THREE (3) DIRECTIONS BY METHODS EQUAL TO THOSE SHOWN.. IF EXCESS SPACE ACROSS WIDTH OF TRANSPORTER IS 2" OR GREATER, SOLID FILL TYPE BLOCKING SHOULD BE USED TO FILL VOID.



BILL OF MATERIAL (METHOD "A")		
LUMBER	LINEAL FEET	BOARD FEET
1" X	22	0
2" X	65	44
NAIL	NO. REQD	POUNDS
6d (2")	36	1/2
10d (3")	90	1-1/2



VIEW "A"

STACKING PATTERN
(METHOD "A")

METHOD "A" IS THE PREFERRED FILLING; HOWEVER, IF VARYING BOX DIMENSIONS PROHIBIT USING THIS METHOD, SEE METHOD "B", PAGE 4, FOR ALTERNATIVE FILLING AND BLOCKING.

MATERIAL SPECIFICATIONS

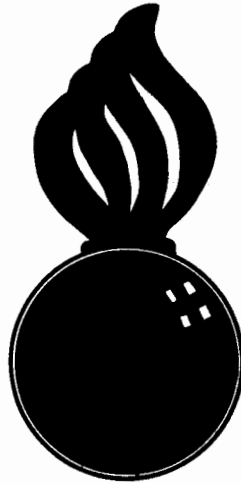
- LUMBER: SEE PARAGRAPH 5400, DRON 3-4, VOL 2..
- NAILS: COMMON, CEMENT-COATED, RED SPEC FF-N-105..
- ALTERNATE: ANNULAR-RING TYPE NAIL OF SAME SIZE..

LOAD AS SHOWN
(METHOD "A")

ITEM	QUANTITY	WEIGHT
BOXES	54	1,380 LBS (APPROX)
DUNNAGE		132 LBS
TOTAL WEIGHT		6,612 LBS *

* THE ACTUAL SHIPPING WEIGHT MAY DEVIATE BECAUSE OF VARIANCE IN BOX WEIGHTS. SEE GENERAL NOTE "D".

APPROVED
 BUREAU OF EXPLOSIVES
A. J. Krasomuck
 DATE 4/24/62 INSPECTOR



**FILLING TYPE 1 (HALF SIZE) CARGO
 TRANSPORTER WITH M413, T378 & XM400
 CARTRIDGE, 105MM, PACKED IN WOODEN
 BOX, FOR SHIPMENT "VIA CONEX"**

**NOTE:-
 FOR LOADING AND BRACING IN GONDOLA CARS
 SEE DRAWING NUMBER 19-48-7018-SP-5H1**

FILLING TYPE 1 (HALF SIZE) CARGO TRANSPORTER WITH M413, T378 & XM400 CARTRIDGE, 105MM, PACKED IN WOODEN BOX, FOR SHIPMENT "VIA CONEX"			
DESIGNED J.D.S.	CHECKED RHA/GWP	APPROVED DIW/Ad	DATE <i>R.G. Mulvaney</i> COLONEL ORD. CORPS U.S.A.
REVISIONS			<i>James J. Hoctor</i> ORD. CORPS U.S.A.
			<i>John P. Seaman</i> ORD. CORPS U.S.A.
			ORDNANCE CORPS U.S.A.
			21 AUGUST 1961
CLASS	DIVISION	DRAWING	FILE
19	48	7021	SP-18A4

DO NOT SCALE