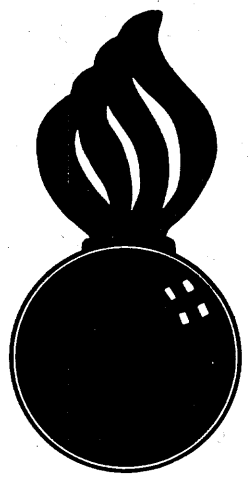


APPROVED
 BUREAU OF EXPLOSIVES
A. J. Grassmuck
 DATE 4/24/62 INSPECTOR

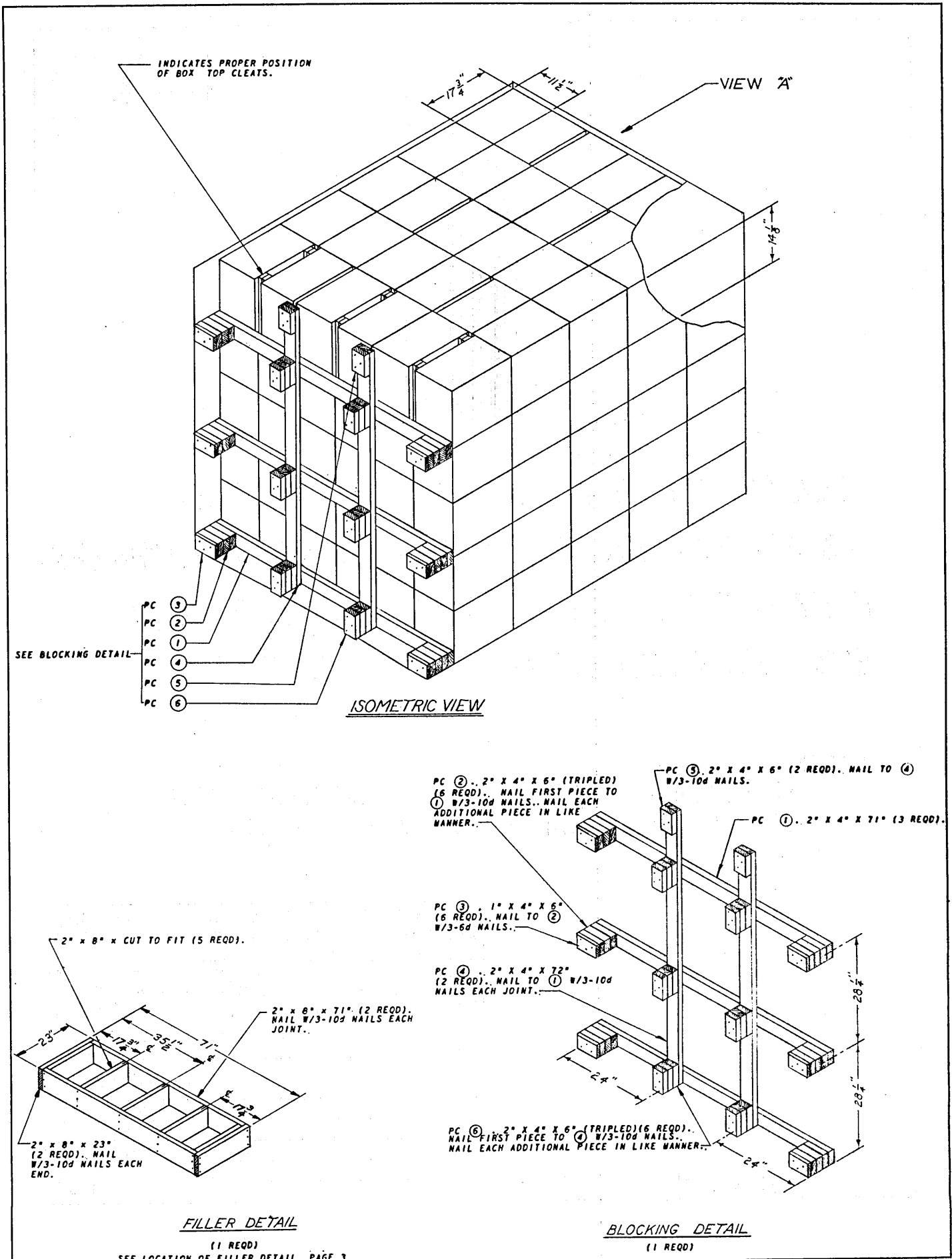


**FILLING TYPE 2 (STANDARD) CARGO
 TRANSPORTER WITH T256, XM386 & XM406
 CARTRIDGE, 40MM, PACKED IN WOODEN
 BOX, FOR SHIPMENT "VIA CONEX"**

**NOTE:-
 FOR LOADING AND BRACING IN GONDOLA CARS
 SEE DRAWING NUMBER 19-48-7018-SP-5H1**

FILLING TYPE 2 (STANDARD) CARGO TRANSPORTER WITH T256, XM386 & XM406 CARTRIDGE, 40MM, PACKED IN WOODEN BOX, FOR SHIPMENT "VIA CONEX"			
DESIGNED BY JDB	CHECKED BY RHA	DATE 01W/60	APPROVED BY <i>R. G. Mackay</i> COLONEL, USA, CORPS, U.S.A.
REVISIONS			APPROVED BY ORDER OF THE CHIEF OF ORDNANCE <i>James J. Hoctor</i> COLONEL, USA, CORPS, U.S.A.
			<i>John P. Fieschew</i> COLONEL, USA, CORPS, U.S.A.
			ORDNANCE CORPS U.S.A.
			21 AUGUST 1961
CLASS	DIVISION	DRAWING	FILE
19	48	7020	SP 16A3

DO NOT SCALE



FILLING AND BLOCKING PROCEDURES

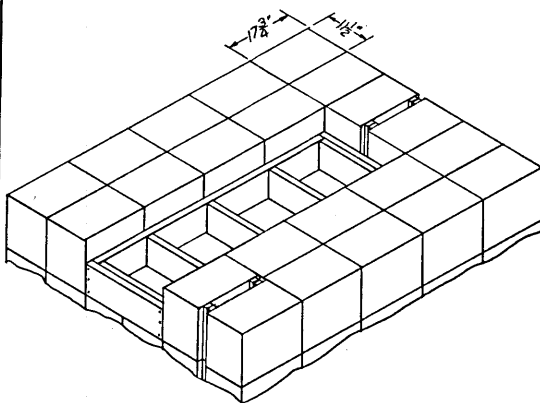
- A. LOAD BOXES IN TRANSPORTER AS SHOWN IN ISOMETRIC VIEW, PAGE 2.
- B. AS EACH ASSEMBLED PCS ①, ② AND ③ IS LOCATED VERTICALLY (SEE BLOCKING DETAIL) LOCATE AND NAIL EACH ASSEMBLED PCS ④ AND ⑤ AS DIRECTED.
- C. POSITION AND NAIL PCS ⑥ TO PCS ④.
- D. CLOSE AND LATCH TRANSPORTER DOORS AND SEAL AS REQUIRED.

CAUTION:

FIELD CHECK FOR AMOUNT OF DUNNAGE TO ASSURE TIGHT FIT OF BLOCKING BETWEEN LADING AND TRANSPORTER DOORS. ADJUST AS REQUIRED.

GENERAL NOTES

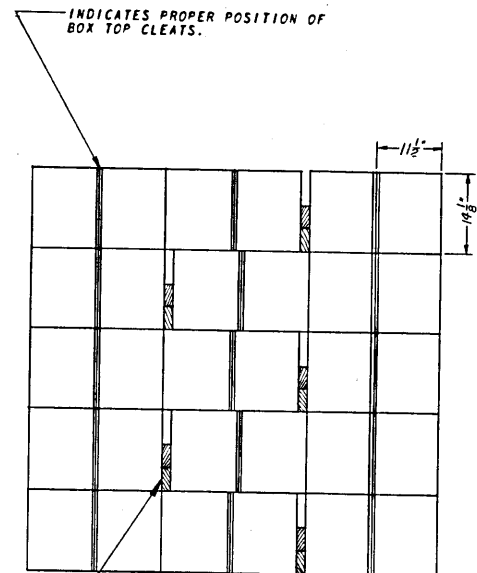
- A. THIS DRAWING IMPLEMENTS AR 55-166.
- B. FILLING AND BLOCKING PROCEDURES SHOWN ARE BASED ON CARGO TRANSPORTERS, TYPE 2, (STANDARD) INSIDE DIMENSIONS 96 $\frac{1}{2}$ " LONG X 71" WIDE X 72" HIGH, MILITARY SPECIFICATION MIL-B-11886E.
- C. FOR DETAILS OF THE 40MM PACKING BOX SEE DWG NO. BB35104. GROSS WEIGHT - 50 LBS (APPROX). BOX DIMENSIONS (APPROX) 17 $\frac{1}{2}$ " L X 14 $\frac{1}{2}$ " W X 11 $\frac{1}{2}$ " H. CUBIC FEET 1.7.
- D. LADING WEIGHT, INCLUDING DUNNAGE, MUST NOT EXCEED 9,000 POUNDS. IF A PARTIAL LOAD IS ACCOMPLISHED, LADING MUST BE BLOCKED AND BRACED AGAINST MOVEMENT IN ALL THREE (3) DIRECTIONS BY METHODS EQUAL TO THOSE SHOWN.



LOCATION OF FILLER DETAIL

FILLER AS SHOWN IS DIMENSIONED FOR A LOAD REDUCED BY EIGHT BOXES. FOR REDUCTION IN LOAD OTHER THAN EIGHT BOXES, CONSTRUCT FILLER TO PROPER SIZE BY METHOD COMPARABLE TO THAT SHOWN. OMIT SOLID FILL IN TOP LAYER WHERE FILLER IS USED.

<u>BILL OF MATERIAL</u>		
<u>LUMBER</u>	<u>LINEAL FEET</u>	<u>BOARD FEET</u>
1" X 4"	3	1
2" X 4"	50	34
<u>NAILS</u>	<u>NO. REQD</u>	<u>POUNDS</u>
6d (2")	18	
10d (3")	132	2



SOLID FILL, 9" WIDE X 17" LONG (AS REQD) (2" X 4" MATERIAL SHOWN).

NOTE: REQUIRED ONLY IF EXCESS SPACE IS 2" OR GREATER.

VIEW "A"

MATERIAL SPECIFICATIONS

- LUMBER:** SEE PARAGRAPH 5400, ORDN 3-4, VOL 2..
- NAILS:** COMMON, CEMENT-COATED, FED SPEC FF-N-105..
- ALT:** ANNULAR-RING TYPE NAIL OF SAME SIZE..

LOAD AS SHOWN

<u>ITEM</u>	<u>QUANTITY</u>	<u>WEIGHT</u>
BOXES	150	8,700 LBS (APPROX)
DUNNAGE	-	.90 LBS
TOTAL WEIGHT		8,790 LBS*

* THE ACTUAL SHIPPING WEIGHT MAY DEVIATE BECAUSE OF VARIANCE IN BOX WEIGHTS. SEE GENERAL NOTE "D".

