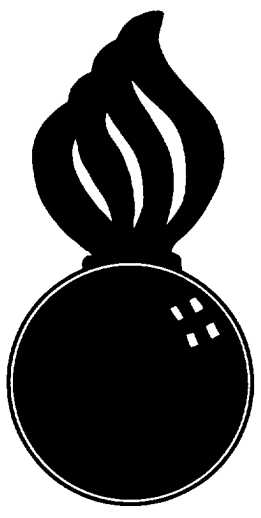


APPROVED
 BUREAU OF EXPLOSIVES
A. J. Grammuck
 DATE 4/24/62 INSPECTOR

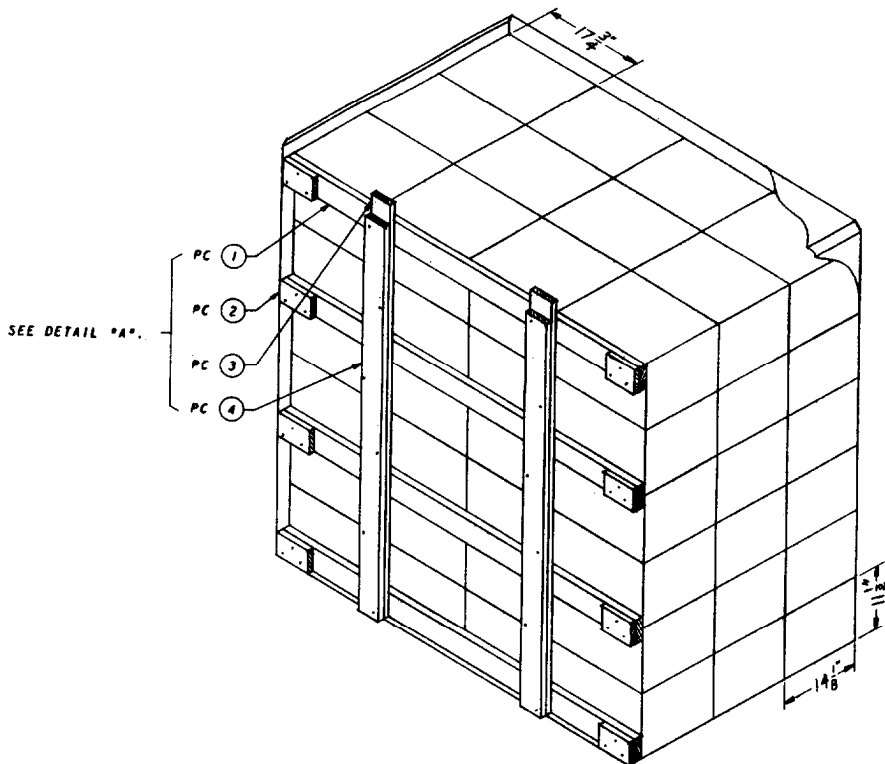


**FILLING TYPE 1 (HALF SIZE) CARGO
 TRANSPORTER WITH T256, XM386 & XM406
 CARTRIDGE, 40MM, PACKED IN WOODEN
 BOX, FOR SHIPMENT "VIA CONEX"**

**NOTE:-
 FOR LOADING AND BRACING IN GONDOLA CARS
 SEE DRAWING NUMBER 19-48-7018-SP-5H1**

FILLING TYPE 1 (HALF SIZE) CARGO TRANSPORTER WITH T256, XM386 & XM406 CARTRIDGE, 40MM PACKED IN WOODEN BOX, FOR SHIPMENT "VIA CONEX"			
DESIGNER <i>JDB</i>	TRACER	REVISION <i>D.W./R.C.B.</i>	SUBMITTED <i>R. G. Mackintosh</i>
CHECKER <i>RHA</i>	CHECKED <i>N.E.W.</i>	TRANSMITTED	EXAMINED <i>James J. Hoctor</i>
			ORD. CORPS U.S.A.
REVISIONS			APPROVED BY ORDER OF THE CHIEF OF ORDNANCE <i>John P. Diachin</i>
			ORD. CORPS U.S.A.
			ORDNANCE CORPS U.S.A.
			21 AUGUST 1961
CLASS	DIVISION	DRAWING	FILE
19	48	7019	SP 16A2

DO NOT SCALE



ISOMETRIC VIEW

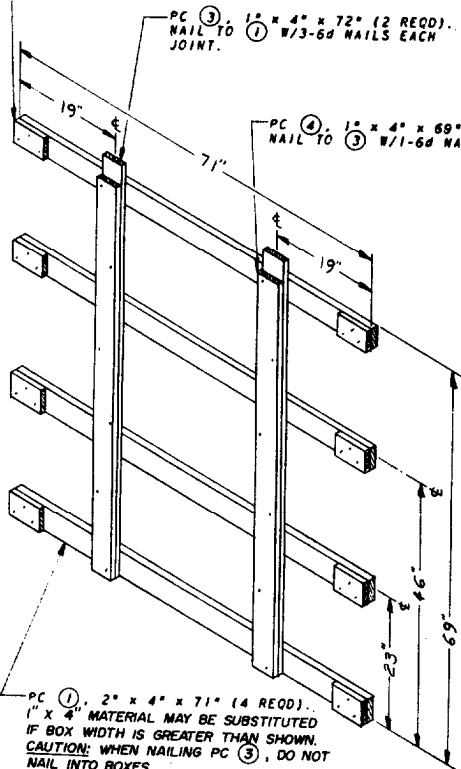
(METHOD "A")

SEE METHOD "B", PAGE 4

PC ②, 1" x 4" x 6" (8 REQD).
NAIL TO ① W/3-6d NAILS. (SEE
CAUTION NOTE, PAGE 3).

PC ③, 1 1/2" x 4" x 72" (2 REQD).
NAIL TO ① W/3-6d NAILS EACH
JOINT.

PC ④, 1" x 4" x 69" (2 REQD).
NAIL TO ③ W/1-6d NAIL EVERY 12".



PC ①, 2" x 4" x 71" (4 REQD).
1" x 4" MATERIAL MAY BE SUBSTITUTED
IF BOX WIDTH IS GREATER THAN SHOWN.
CAUTION: WHEN NAILING PC ③, DO NOT
NAIL INTO BOXES.

DETAIL "A"

(1 REQD)

FILLING AND BLOCKING PROCEDURES

(METHOD "A")

- A. LOAD BOXES IN TRANSPORTER AS SHOWN IN ISOMETRIC VIEW.
- B. ASSEMBLE PCS ① AND ② (SEE ISOMETRIC VIEW AND DETAIL "A") AND PLACE ASSEMBLIES IN TRANSPORTER.
- C. AS EACH ASSEMBLED PCS ① AND ② IS LOCATED VERTICALLY (SEE DETAIL "A", PAGE 2, FOR PROPER SPACING) NAIL PCS ③ TO THE ASSEMBLY AS DIRECTED.
- D. LOCATE AND NAIL PCS ④ TO PCS ③.
- E. CLOSE AND LATCH TRANSPORTER DOORS AND SEAL AS REQUIRED.

CAUTION:

FIELD CHECK FOR AMOUNT OF DUNNAGE TO ASSURE TIGHT FIT OF BLOCKING BETWEEN LADING AND TRANSPORTER DOORS. ADJUST AS REQUIRED.

GENERAL NOTES

- A. THIS DRAWING IMPLEMENTS AR 55-166.
- B. FILLING AND BLOCKING PROCEDURES SHOWN ARE BASED ON CARGO TRANSPORTERS, TYPE 1, (HALF SIZE) INSIDE DIMENSIONS 45" LONG x 71" WIDE x 72" HIGH. MILITARY SPECIFICATION MIL-B-21550.
- C. FOR DETAILS OF THE 40MM PACKING BOX SEE DRAWING NO. 9835104.
GROSS WEIGHT - 58 LBS (APPROX).
BOX DIMENSIONS (APPROX) 17½" LONG x 14½" WIDE x 11½" HIGH. CUBIC FEET 1.7.
- D. LADING WEIGHT, INCLUDING DUNNAGE, MUST NOT EXCEED 9,000 POUNDS. IF A PARTIAL LOAD IS ACCOMPLISHED, LADING MUST BE BLOCKED AGAINST MOVEMENT IN ALL THREE (3) DIRECTIONS BY METHODS EQUAL TO THOSE SHOWN.

BILL OF MATERIAL (METHOD "A")

LUMBER	LINEAL FEET	BOARD FEET
1" x 4"	28	10
2" x 4"	24	16
NAILS	NO. REQD	POUNDS
6d (2")	60	1

MATERIAL SPECIFICATIONS

LUMBER: SEE PARAGRAPH 5400, ORDM 3-4, VOL 2.
 NAILS: COMMON, CEMENT-COATED, FED SPEC FF-N-105.
 ALTERNATIVE: ANNULAR-RING TYPE NAIL OF SAME SIZE.

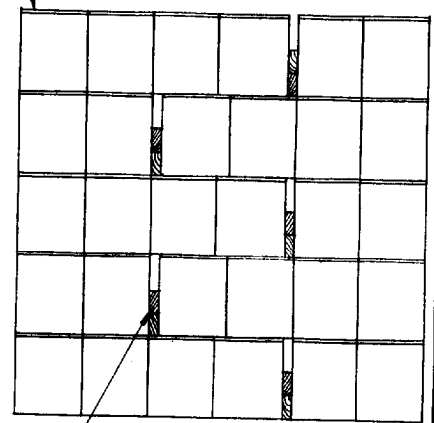
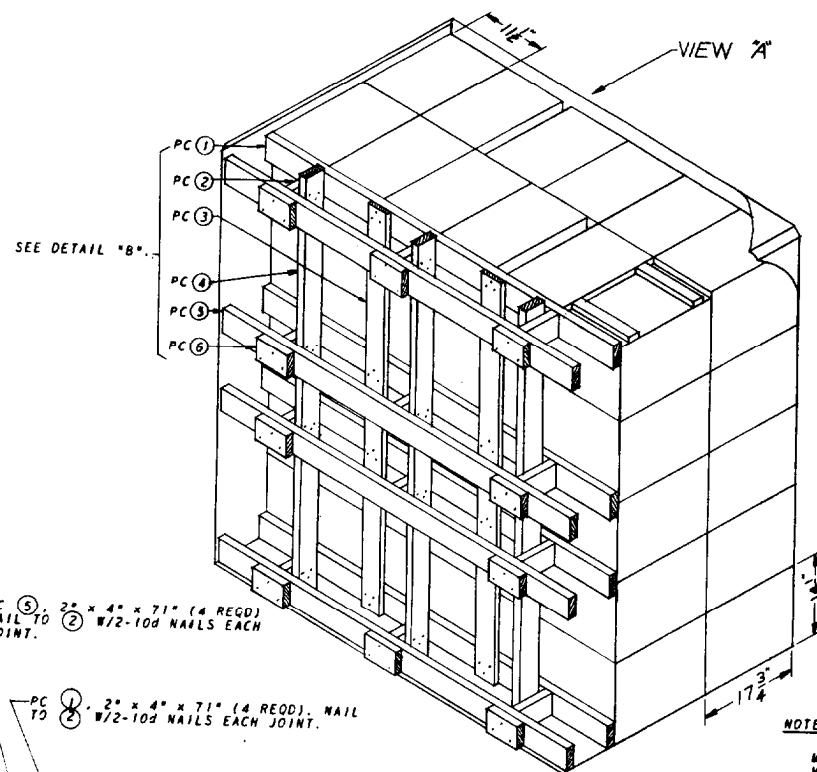
LOAD AS SHOWN

(METHOD "A")

<u>ITEM</u>	<u>QUANTITY</u>	<u>WEIGHT</u>
BOXES	72	4,176 LBS (APPROX)
DUNNAGE		66 LBS
TOTAL WEIGHT		4,242 LBS *

* THE ACTUAL SHIPPING WEIGHT MAY DEVIATE BECAUSE OF VARIANCE IN BOX WEIGHTS, SEE GENERAL NOTE "D".

INDICATES CORRECT POSITION FOR BOX TOP CLEATS.



VIEW 'A'
(METHOD 'B*')

NOTE ①:

METHOD 'A' IS THE PREFERRED LOADING; HOWEVER, BECAUSE OF VARYING BOX DIMENSIONS, LENGTH OF BOXES MUST BE FIELD CHECKED TO ASSURE THEIR FIT ACROSS WIDTH OF TRANSPORTER.

ISOMETRIC VIEW

(METHOD 'B*')
SEE NOTE ①.

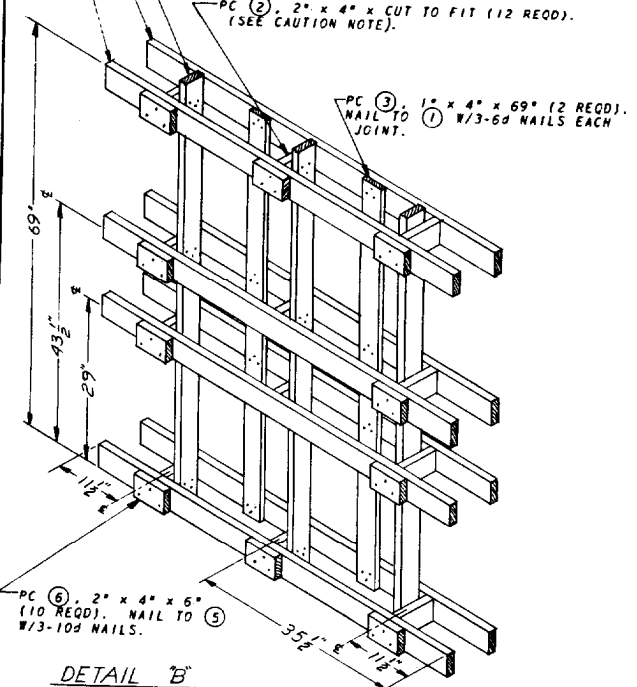
FILLING AND BLOCKING PROCEDURE

(METHOD 'B*')

- A. LOAD BOXES IN TRANSPORTER AS SHOWN IN ISOMETRIC VIEW. POSITION SOLID FILL AS FILLING PROGRESSES. SEE VIEW 'A'.
- B. ASSEMBLE PCS ① AND ② (SEE ISOMETRIC VIEW AND DETAIL 'B*') AND PLACE ASSEMBLIES IN TRANSPORTER.
- C. AS EACH ASSEMBLED PCS ① AND ② IS LOCATED VERTICALLY (SEE DETAIL 'B*' FOR PROPER SPACING), NAIL PCS ③ TO THE ASSEMBLY AS DIRECTED.
- D. LOCATE AND NAIL PCS ④ TO PCS ②.
- E. LOCATE AND NAIL PCS ⑤ TO PCS ②.
- F. LOCATE AND NAIL PCS ⑥ TO PCS ⑤.

CAUTION:

FIELD CHECK FOR LENGTH OF PC ② TO ASSURE TIGHT FIT OF BLOCKING BETWEEN LADING AND TRANSPORTER DOORS. ADJUST AS REQUIRED.



DETAIL 'B'

(1 REQ'D)

BILL OF MATERIAL (METHOD 'B*')

LUMBER	LINEAL FEET	BOARD FEET
1" x 4"	12	4
2" x 4"	78	52
NAILS	NO. REQ'D	POUNDS
6d (2")	24	1
10d (3")	114	2
SOLID FILL AS REQ'D (REF: 19 BD FT AS SHOWN)		

LOAD AS SHOWN

ITEM	QUANTITY	WEIGHT
BOXES	60	3,480 LBS (APPROX)
DUNNAGE		190 LBS
TOTAL WEIGHT		3,670 LBS *

* SEE NOTE NEAR BOTTOM OF PAGE 3.