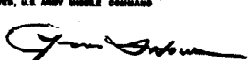


PATRIOT

LOADING, TIEDOWN, AND UNLOADING PROCEDURES FOR THE MISSILE ROUND, PACKED ONE PER CONTAINER, IN/ON TACTICAL VEHICLES

INDEX

<u>ITEM</u>	<u>PAGE (S)</u>
GENERAL NOTES, AND MATERIAL SPECIFICATIONS-----	2
LOAD PLANNING GUIDANCE-----	3, 17
ONE CONTAINER-----	4, 6
TWO CONTAINERS-----	5, 7
THREE CONTAINERS-----	8
FOUR CONTAINERS-----	9
FIVE CONTAINERS-----	10
SIX CONTAINERS-----	11
SEVEN CONTAINERS-----	12, 13
EIGHT CONTAINERS-----	14, 15

REVISIONS				DRAWN	DATE	BY	CHECKED	DATE	BY
1	MAR 85	WRE WSE	[Signature]	JDS/WRE	1/81	[Signature]	JEAN BURNE	[Signature]	[Signature]
				<small>APPROVED BY ORDER OF COMMANDING GENERAL, U.S. ARMY NATIONAL DEVELOPMENT AND RESEARCH COMMAND DARCOM</small> <div style="text-align: center;">  John S. Spaldin <small>U.S. ARMY NATIONAL DEVELOPMENT AND RESEARCH COMMAND DARCOM</small> </div>					
				U.S. ARMY DARCOM DRAWING					
				OCTOBER 1981					
				CLASS	DIVISION	DRAWING	FILE		
				19	48	5978	GM 17PAI		

DO NOT SCALE

GENERAL NOTES

- A. THIS DOCUMENT HAS BEEN PREPARED AND ISSUED IN ACCORDANCE WITH AR 740-1.
- B. THIS DRAWING COVERS PROCEDURES APPLICABLE TO THE TRANSPORT OF THE PATRIOT MISSILE ROUND, PACKED ONE PER CONTAINER, IN/ON TACTICAL VEHICLES. IF OTHER TYPES OF CARGO ITEMS ARE TRANSPORTED WITH THAT SHOWN, THE TOTAL LOAD MUST BE COMPATIBLE, AND THE ADDED ITEMS MUST BE SECURED WITH WEB STRAP ASSEMBLIES, AS REQUIRED TO PREVENT DISPLACEMENT DURING TRANSPORTATION.
- C. DEPICTED PROCEDURES APPLY TO THE VEHICLES DESIGNATED HEREIN, MODIFIED TO INCLUDE THE UNIVERSALLY APPLICABLE "TIE DOWN KIT" WHICH CONSISTS OF THE TIE DOWN FITTINGS OR ANCHOR DEVICES FOR INSTALLATION IN/ON CARGO BEDS, AND WEB STRAP TIE DOWN ASSEMBLIES.
- D. WHENEVER POSSIBLE, A LOAD SHOULD BE CENTERED Laterally IN/ON CARRYING VEHICLE TO PROVIDE FOR EQUAL ANGLE HOLD DOWN BY THE SECURING WEB STRAP ASSEMBLIES. WHENEVER POSSIBLE, LADING SHOULD BE POSITIONED AGAINST THE FRONT WALL OF THE VEHICLE OR CENTERED LONGITUDINALLY IN/ON THE CARRYING VEHICLE BETWEEN THE SELECTED TIE DOWN FITTINGS TO BE USED. HOWEVER, DUE TO LADING WEIGHT, LADING LENGTH, LADING CONFIGURATION AND/OR LOCATION AND QUANTITY OF TIEDOWN ANCHORS WITHIN THE CARRYING VEHICLE IT MAY BE NECESSARY TO LOCATE THE LADING LONGITUDINALLY IN/ON A VEHICLE AS SHOWN WITHIN THIS DRAWING TO PROVIDE FOR PROPER TIEDOWN AND TO ACHIEVE A MAXIMUM LOAD.
- E. WEB STRAP TIEDOWN ASSEMBLIES MUST BE SECURELY HOOKED INTO ANCHORING DEVICES ON THE TRANSPORTING VEHICLE AND FIRMLY TENSIONED. ALSO, WHEN ONE ITEM IS UNITIZED TO ANOTHER, THE HOOKS ON A STRAP MUST BE SECURELY ENGAGED AND THE STRAP FIRMLY TENSIONED. EXERCISE CARE DURING STRAP APPLICATION; AVOID TWISTS IN THE STRAP TO THE EXTENT POSSIBLE (IF TIME PERMITS), BUT INSURE THERE ARE NO KNOTS IN STRAP. ON THE TAKE-UP SPOOL OF RATCHET, INSURE STRAIGHT LAY OF STRAP WHEN TENSIONING. THE TENSIONED STRAP MUST FORM AT LEAST ONE AND ONE-HALF COMPLETE WRAPS ON THE TAKE-UP SPOOL OF THE TENSIONING RATCHET. THE BACK THE LOOSE END OF STRAP AFTER TENSIONING IS COMPLETED (LOOSE END MAY BE FOLDED AND TAPED OR TIED TO THE TENSION STRAP IF TIME PERMITS).
- F. ADJUSTABLE SCUFF SLEEVES PROVIDED ON WEB STRAP ASSEMBLIES WILL BE LOCATED TO PROVIDE A PAD WHERE STRAPS PASS OVER SHARP EDGES OR RATCHETS AND HOOKS ON PREVIOUSLY INSTALLED WEB STRAP TIEDOWN ASSEMBLIES. METAL PARTS OF A STRAP ASSEMBLY SHOULD BE LOCATED SO AS TO AVOID CONTACT WITH THE CARGO. IF CONTACT CANNOT BE AVOIDED, A SUITABLE ANTI-CHAFING MATERIAL, AS LISTED UNDER THE MATERIAL SPECIFICATIONS BELOW, MUST BE POSITIONED BETWEEN THE METAL PARTS OF A STRAP ASSEMBLY AND THE CARGO AND IF NECESSARY, TAPED OR TIED IN POSITION.
- G. CONTAINER DETAIL:
DIMENSIONS-----234" LONG BY 42-3/8" WIDE BY 38-3/4" HIGH.
GROSS WEIGHT-----3,750 POUNDS (APPROX).
- H. IF THE SIDE RACKS FOR THE SEMITRAILER ARE TO BE TRANSPORTED ON THE LOADED TRAILER, THEY WILL BE STACKED ON THE TRAILER AND SECURED WITH A SUFFICIENT QUANTITY OF WEB STRAP TIE DOWN ASSEMBLIES TO PREVENT LOSS DURING TRANSPORT. SIDE RACKS FOR THE M871 AND M872 SEMITRAILER MAY BE POSITIONED AGAINST THE FORWARD BULKHEADS AND SECURED WITH WEB STRAP TIE DOWN ASSEMBLIES.
- J. ITEM LOCATION AND QUANTITIES OF THE DESIGNATED ITEM MAY BE VARIED TO SATISFY OPERATIONAL REQUIREMENTS, PROVIDED LOADING AND TIEDOWN PRINCIPLES SPECIFIED HEREIN ARE RETAINED AND A VEHICLE IS NOT OVERLOADED. CAUTION: CONTAINERS MUST NOT BE STACKED MORE THAN TWO HIGH.

(CONTINUED AT RIGHT)

(GENERAL NOTES CONTINUED)

- K. WHEN ONE WEB STRAP TIEDOWN ASSEMBLY IS NOT LONG ENOUGH TO SPAN THE DISTANCE DEPICTED TWO ASSEMBLIES MAY BE HOOKED TOGETHER TO GAIN THE NECESSARY LENGTH.
- L. ONLY THE CARGO BODIES OR BEDS OF THE TACTICAL VEHICLES HAVE BEEN SHOWN HEREIN, TO PREVENT DISTRACTION FROM THE DELINEATED LOADING AND TIEDOWN PROCEDURES, AND ARE SHOWN IN ISOMETRIC FORM WITH THE STRUCTURAL PORTIONS OMITTED AS NECESSARY TO IMPROVE THE CLARITY OF THE DEPICTED PROCEDURES.
- M. DURING LOADING OPERATIONS, ANTI-CHAFING MATERIAL OF SUITABLE THICKNESS MAY BE PLACED BETWEEN CONTACTING CONTAINERS WITHIN A LOAD AT THE DISCRETION OF THE PERSONNEL IN CHARGE.
- N. THE TIEDOWN METHODS WITHIN THIS DRAWING SHOW TWO HOOKS TO BE CONNECTED TO ONE TIEDOWN EYE. THIS IS AUTHORIZED AS SPECIFIED HEREIN AND MEETS THE INTENT OF THE REQUIREMENTS CITED IN TS 9-2300-280-30.
- O. CAUTION: THE GUIDED MISSILE MAY BE DAMAGED IF TORQUE TUBE HANDLE IS UNLOCKED DURING SHIPMENT. IN LOCKED POSITION, TORQUE TUBE HANDLE IS LEFT OF CENTER WITH QUICK RELEASE PIN IN RIGHT TRAVEL RESTRAINT HOLE. WHEN UNLOCKED, TORQUE TUBE HANDLE IS RIGHT OF CENTER AND A RED WARNING PATCH IS VISIBLE ON THE INSTRUMENT PANEL. CHECK TO BE SURE TORQUE TUBE HANDLE IS IN THE LOCKED POSITION PRIOR TO LOADING.
- P. THIS DRAWING DEPICTS THE AFT END OF THE CONTAINER POINTING TOWARD THE REAR OF THE VEHICLE. HOWEVER, THE CONTAINER MAY BE LOADED WITH THE AFT END POINTING TO THE REAR, OR TO THE FORWARD END OF THE VEHICLE.
- Q. FOR ADDITIONAL GUIDANCE, ATTENTION IS DIRECTED TO THE "SPECIAL NOTES" AND CHART ON PAGE 3, THE "SPECIAL NOTES" WITH EACH LOAD ON PAGE 4 THRU 14, AND THE "LOAD PLANNING GUIDANCE" ON PAGE 3.

MATERIAL SPECIFICATIONS

STRAP-----WEBBING, UNIVERSAL TIEDOWN, NSN 5340-01-089-4997,
PN 11669588.

ANTI-CHAFING
MATERIAL-----CANVAS, BURLAP, TAPE OR ANY OTHER SUITABLE MATERIAL.

REVISION

REVISION NO. 1, DATED MARCH 1985, CONSISTS OF:

1. ADDED GENERAL NOTES "O" AND "P" ON THIS PAGE.

SPECIAL NOTES:

1. ONLY MAXIMUM LOADS ARE SHOWN FOR THE VEHICLES AND/OR TRAILERS LISTED IN THE CHART AT THE RIGHT. FOR LOADS OF ONE THROUGH EIGHT CONTAINERS, SEE THE "LOAD PLANNING GUIDANCE FOR ONE THROUGH EIGHT CONTAINERS" ON THIS PAGE.
2. PAGES 4 THROUGH 15 SHOW METHODS OF LOADING ONE THROUGH 8 CONTAINERS. BY USING THE METHOD SHOWN AND THE "LOAD PLANNING GUIDANCE" ON THIS PAGE, LOADS OF ONE THROUGH EIGHT CONTAINERS MAY BE ACHIEVED. THESE METHODS ARE APPLICABLE FOR ANY TACTICAL VEHICLE HAVING A SUFFICIENT QUANTITY OF TIEDOWN FITTINGS LOCATED ON THE SIDEWALL OR ON THE FLOOR.
3. THE BEST METHOD OR COMBINATION OF METHODS SHOULD BE SELECTED FOR THE VEHICLE BEING LOADED. THE METHOD USED WILL DEPEND ON THE QUANTITY OF CONTAINERS TO BE LOADED AND THE TYPE OF VEHICLE USED. ANY COMBINATION OF THE LOADS SHOWN ON PAGES 4 THROUGH 15 MAY BE USED WHEN LOADING A VEHICLE.

TYPICAL TACTICAL VEHICLES AND MAXIMUM LOAD PER VEHICLE
(SEE "NOTE ⊕" BELOW)

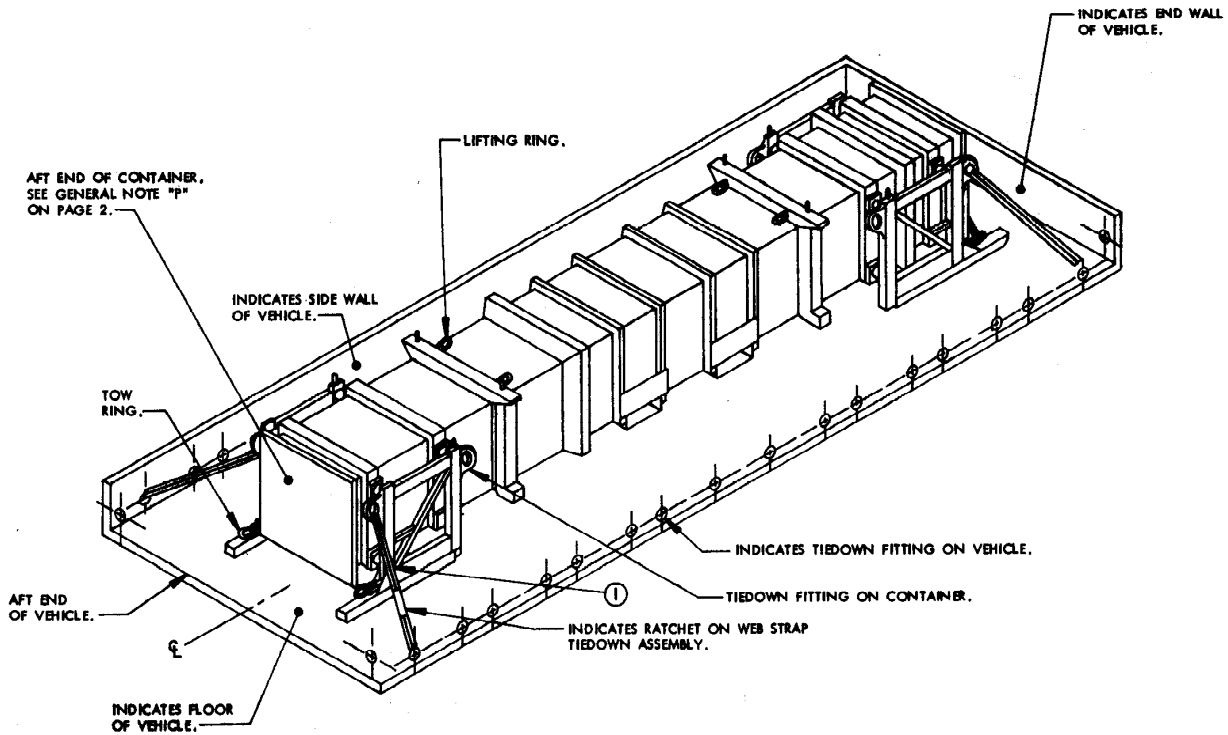
TYPICAL VEHICLE AND/OR TRAILER BEING LOADED (SEE "NOTE ⊕" BELOW)	MAXIMUM NUMBER OF CONTAINERS IN LOAD, PER VEHICLE WEIGHT LIMIT OR SIZE OF VEHICLE	SEE THE LOAD OR COMBINATION OF LOADS SHOWN ON PAGE (S)
TRUCK, CARGO, 5 TON, M55	2 CONTAINERS (WEIGHT LIMIT)	PAGE 5
SEMITRAILER, STAKE, 12 TON, M127	4 CONTAINERS (LIMITED TO SIZE OF VEHICLE)	PAGE 10
SEMITRAILER, 22-1/2 TON, M171	4 CONTAINERS (LIMITED TO SIZE OF VEHICLE)	PAGE 10
SEMITRAILER, 34 TON, M172	8 CONTAINERS (LIMITED TO SIZE OF VEHICLE)	PAGES 14 AND 15

NOTE ⊕ :

THE TACTICAL VEHICLES LISTED IN THE CHART ABOVE AND SHOWN WITHIN THIS DRAWING WERE SELECTED AS TYPICAL ONLY. OTHER TYPES OF VEHICLES MAY BE USED IN LIEU OF THOSE SHOWN, AS LONG AS THEY COMPLY WITH GENERAL NOTE "C" ON PAGE 2.

LOAD PLANNING GUIDANCE FOR ONE THROUGH EIGHT CONTAINERS

QUANTITY OF CONTAINERS AND WEIGHT	SEE LOAD SHOWN ON PAGE (S) OR USE THE ALTERNATIVE METHOD LISTED IN COLUMN AT RIGHT	ALTERNATIVE METHOD OF LOADING THE QUANTITY OF CONTAINERS LISTED IN THE FIRST COLUMN OF THIS CHART
1 (3,750 LBS)	4 AND 6	NONE
2 (7,500 LBS)	5 AND 7	IF THE TRAILER IS LONG ENOUGH, TWO CONTAINERS MAY BE LOADED END-TO-END AND SECURED AS SHOWN FOR THE ONE CONTAINER LOAD ON PAGE 6.
3 (11,250 LBS)	8	THREE CONTAINERS MAY BE LOADED AS SHOWN AT THE REAR OF THE SEVEN CONTAINER LOAD ON PAGE 12.
4 (15,000 LBS)	9	FOUR CONTAINERS MAY BE LOADED AS SHOWN AT THE REAR OF THE FIVE CONTAINER LOAD ON PAGE 10.
5 (18,750 LBS)	10	FIVE CONTAINERS MAY BE LOADED WITH THREE CONTAINERS AT THE REAR AS SHOWN IN THE LOAD ON PAGE 12 AND TWO CONTAINERS AT THE FRONT AS SHOWN IN THE LOAD ON PAGE 11.
6 (22,500 LBS)	11	SIX CONTAINERS MAY BE LOADED WITH TWO GROUPS OF THREE CONTAINERS AS SHOWN AT THE REAR OF THE SEVEN CONTAINER LOAD ON PAGE 12.
7 (26,250 LBS)	12 AND 13	NONE
8 (30,000 LBS)	14 AND 15	NONE



ISOMETRIC VIEW

KEY NUMBER

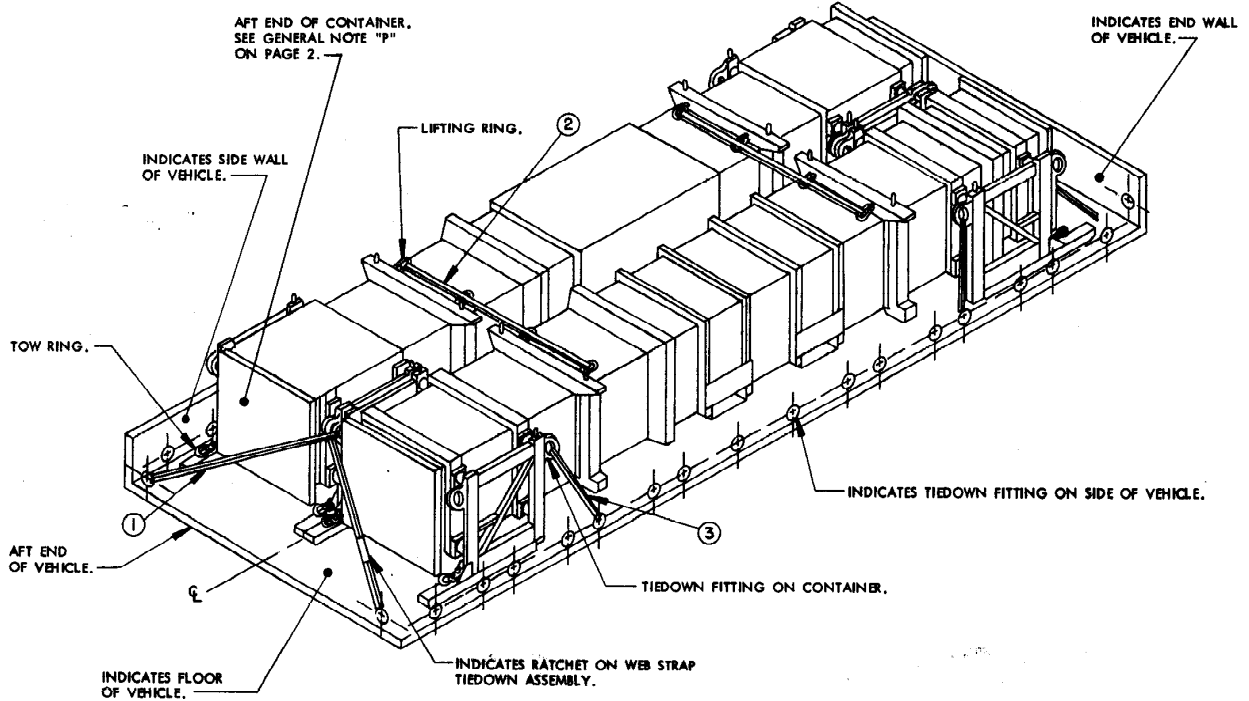
- ① WEB STRAP TIEDOWN ASSEMBLY (4 REQD). INSTALL TO EXTEND FROM A TIEDOWN FITTING ON SIDE OF THE VEHICLE, UP AND THROUGH A CONTAINER TIEDOWN FITTING, BACK TO THE SAME TIEDOWN FITTING ON SIDE OF THE VEHICLE. SEE SPECIAL NOTE 4 ON THIS PAGE.

SPECIAL NOTES:

1. A TYPICAL LOAD OF ONE CONTAINER IS SHOWN IN A TRUCK, CARGO, 5 TON, M55, HAVING INSIDE DIMENSIONS OF 244" LONG BY 88" WIDE.
2. THE VEHICLE SHOWN WAS SELECTED AS TYPICAL ONLY AND VEHICLES OF OTHER DIMENSIONS, AND/OR TRAILERS, WHICH HAVE A SUFFICIENT QUANTITY OF TIEDOWN FITTINGS, LOCATED ON THE SIDE WALL AND END WALL, OR ON THE FLOOR, MAY BE USED.
3. A TOTAL OF FOUR WEB STRAP TIEDOWN ASSEMBLIES ARE REQUIRED FOR THE LOAD SHOWN.
4. THE HOOK END OF THE WEB STRAP MUST BE THREADED THROUGH THE CONTAINER TIEDOWN FITTING BECAUSE THE HOOK OPENING IS TOO SMALL TO ATTACH TO THE CONTAINER TIEDOWN. THE HOOK WILL FIT ON THE TOW RING AND THE LIFTING RING.
5. WEB STRAP TIEDOWN ASSEMBLIES MUST NOT BE POSITIONED OVER THE BODY OF THE CONTAINER AS THE BODY MUST FLOAT WITHIN THE CRADLE.
6. CAUTION: THE TORQUE TUBE HANDLE MUST BE IN THE LOCKED POSITION PRIOR TO LOADING THE CONTAINER IN/ON A VEHICLE. SEE GENERAL NOTE "O" ON PAGE 2.

LOAD AS SHOWN

ITEM	QUANTITY	WEIGHT (APPROX)
CONTAINER	1	3,750 LBS



ISOMETRIC VIEW

KEY NUMBERS

SPECIAL NOTES:

1. A TYPICAL LOAD OF TWO CONTAINERS IS SHOWN IN A TRUCK, CARGO, 5 TON, M53, HAVING INSIDE DIMENSIONS OF 244" LONG BY 88" WIDE.
2. THE VEHICLE SHOWN WAS SELECTED AS TYPICAL ONLY AND VEHICLES OF OTHER DIMENSIONS, AND/OR TRAILERS, WHICH HAVE A SUFFICIENT QUANTITY OF TIEDOWN FITTINGS, LOCATED ON THE SIDE WALL AND END WALL, OR ON THE FLOOR, MAY BE USED.
3. A TOTAL OF TEN WEB STRAP TIEDOWN ASSEMBLIES ARE REQUIRED FOR THE LOAD SHOWN.
4. THE HOOK END OF THE WEB STRAP MUST BE THREADED THROUGH THE CONTAINER TIEDOWN FITTING BECAUSE THE HOOK OPENING IS TOO SMALL TO ATTACH TO THE CONTAINER TIEDOWN. THE HOOK WILL FIT ON THE TOW RING AND THE LIFTING RING.
5. WEB STRAP TIEDOWN ASSEMBLIES MUST NOT BE POSITIONED OVER THE BODY OF THE CONTAINER AS THE BODY MUST FLOAT WITHIN THE CRADLE.
6. **CAUTION:** THE TORQUE TUBE HANDLE MUST BE IN THE LOCKED POSITION PRIOR TO LOADING THE CONTAINER IN/ON A VEHICLE. SEE GENERAL NOTE "O" ON PAGE 2.

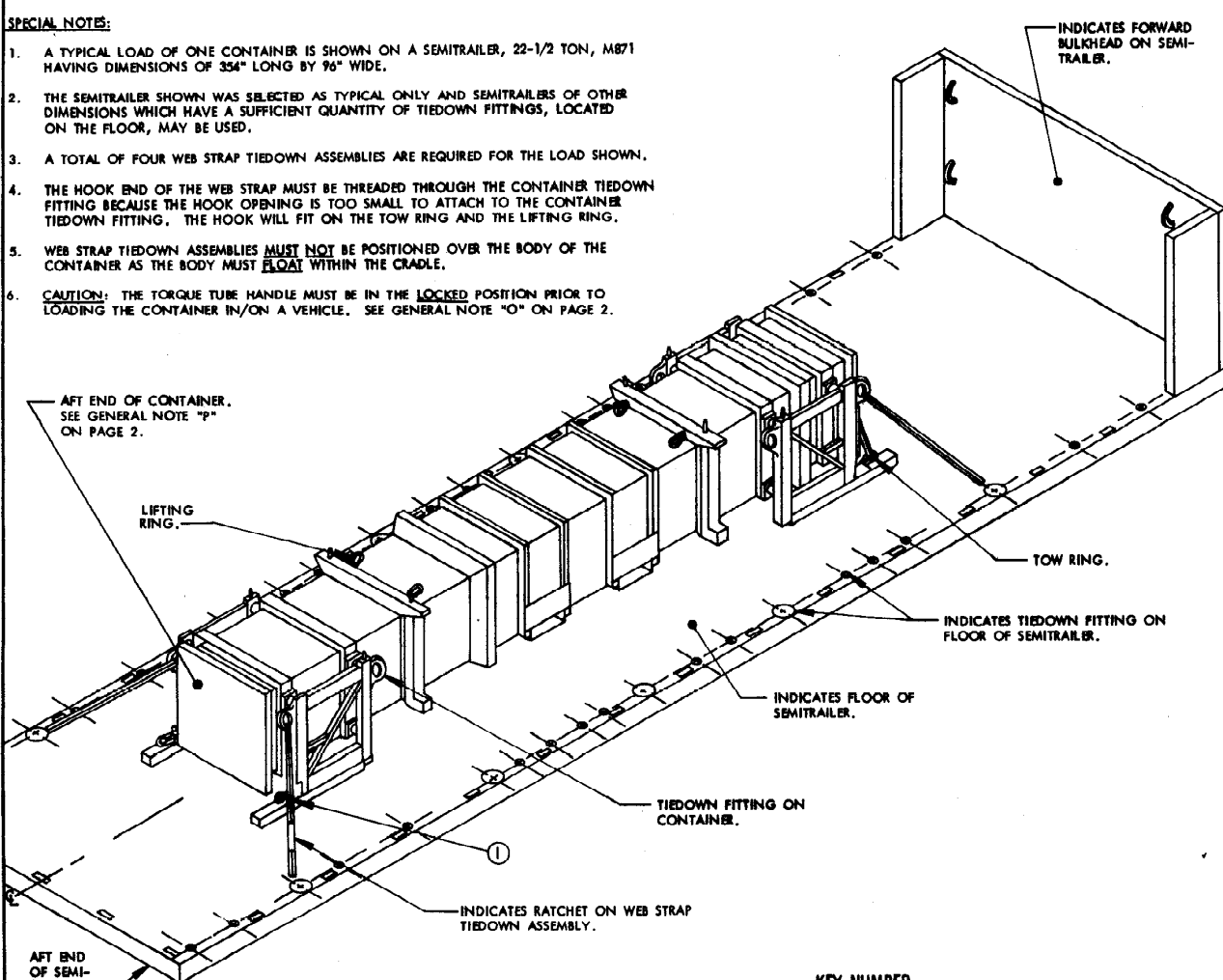
- ① WEB STRAP TIEDOWN ASSEMBLY (4 REQD). INSTALL TO EXTEND FROM A TIEDOWN FITTING ON END WALL (OR SIDEWALL) OF THE VEHICLE, UP AND THROUGH A TIEDOWN FITTING ON THE FARTHEST CONTAINER, BACK TO THE SAME TIEDOWN FITTING ON END WALL (OR SIDEWALL) OF THE VEHICLE. THESE STRAPS MUST BE PRE-POSITIONED. SEE SPECIAL NOTE 4 ON THIS PAGE .
- ② WEB STRAP TIEDOWN ASSEMBLY (2 REQD). INSTALL FROM AN OUTSIDE LIFTING RING ON ONE CONTAINER TO AN OUTSIDE LIFTING RING ON THE OPPOSITE CONTAINER.
- ③ WEB STRAP TIEDOWN ASSEMBLY (4 REQD). INSTALL TO EXTEND FROM A TIEDOWN FITTING ON SIDE OF THE VEHICLE, UP AND THROUGH A CONTAINER TIEDOWN FITTING, BACK TO THE SAME TIEDOWN FITTING ON SIDE OF THE VEHICLE. SEE SPECIAL NOTE 4 ON THIS PAGE.

LOAD AS SHOWN

ITEM	QUANTITY	WEIGHT (APPROX)
CONTAINER	2	7,300 LBS

SPECIAL NOTES:

1. A TYPICAL LOAD OF ONE CONTAINER IS SHOWN ON A SEMITRAILER, 22-1/2 TON, M871 HAVING DIMENSIONS OF 354" LONG BY 96" WIDE.
2. THE SEMITRAILER SHOWN WAS SELECTED AS TYPICAL ONLY AND SEMITRAILERS OF OTHER DIMENSIONS WHICH HAVE A SUFFICIENT QUANTITY OF TIEDOWN FITTINGS, LOCATED ON THE FLOOR, MAY BE USED.
3. A TOTAL OF FOUR WEB STRAP TIEDOWN ASSEMBLIES ARE REQUIRED FOR THE LOAD SHOWN.
4. THE HOOK END OF THE WEB STRAP MUST BE THREADED THROUGH THE CONTAINER TIEDOWN FITTING BECAUSE THE HOOK OPENING IS TOO SMALL TO ATTACH TO THE CONTAINER TIEDOWN FITTING. THE HOOK WILL FIT ON THE TOW RING AND THE LIFTING RING.
5. WEB STRAP TIEDOWN ASSEMBLIES **MUST NOT** BE POSITIONED OVER THE BODY OF THE CONTAINER AS THE BODY MUST **FLOAT** WITHIN THE CRADLE.
6. **CAUTION:** THE TORQUE TUBE HANDLE MUST BE IN THE **LOCKED** POSITION PRIOR TO LOADING THE CONTAINER IN/ON A VEHICLE. SEE GENERAL NOTE "O" ON PAGE 2.



ISOMETRIC VIEW

KEY NUMBER

- ① WEB STRAP TIEDOWN ASSEMBLY (4 REQD). INSTALL TO EXTEND FROM A TIEDOWN FITTING ON SIDE OF THE SEMITRAILER, UP AND THROUGH A CONTAINER TIEDOWN FITTING, BACK TO THE SAME TIEDOWN FITTING ON SIDE OF THE SEMITRAILER. SEE SPECIAL NOTE 4 ON THIS PAGE.

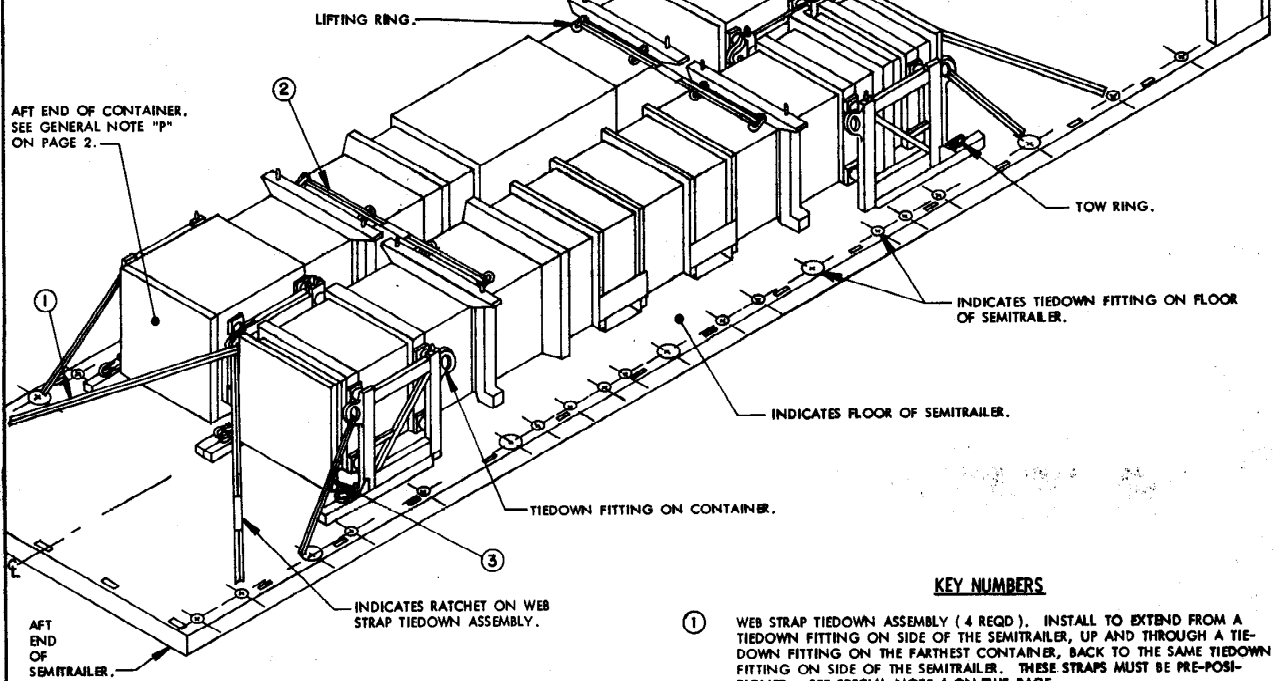
LOAD AS SHOWN

ITEM	QUANTITY	WEIGHT (APPROX)
CONTAINER-----	1-----	3,730 LBS

ONE CONTAINER

SPECIAL NOTES:

1. A TYPICAL LOAD OF TWO CONTAINERS IS SHOWN ON A SEMITRAILER, 22-1/2 TON, M871, HAVING DIMENSIONS OF 354" LONG BY 96" WIDE.
2. THE SEMITRAILER SHOWN WAS SELECTED AS TYPICAL ONLY AND SEMITRAILERS OF OTHER DIMENSIONS WHICH HAVE A SUFFICIENT QUANTITY OF TIEDOWN FITTINGS, LOCATED ON THE FLOOR, MAY BE USED.
3. A TOTAL OF TEN WEB STRAP TIEDOWN ASSEMBLIES ARE REQUIRED FOR THE LOAD SHOWN.
4. THE HOOK END OF THE WEB STRAP MUST BE THREADED THROUGH THE CONTAINER TIEDOWN FITTING BECAUSE THE HOOK OPENING IS TOO SMALL TO ATTACH TO THE CONTAINER TIEDOWN FITTING. THE HOOK WILL FIT ON THE TOW RING AND THE LIFTING RING.
5. WEB STRAP TIEDOWN ASSEMBLIES MUST NOT BE POSITIONED OVER THE BODY OF THE CONTAINER AS THE BODY MUST FLAT WITHIN THE CRADLE.
6. CAUTION: THE TORQUE TUBE HANDLE MUST BE IN THE LOCKED POSITION PRIOR TO LOADING THE CONTAINER IN/ON A VEHICLE. SEE GENERAL NOTE "O" ON PAGE 2.



ISOMETRIC VIEW

KEY NUMBERS

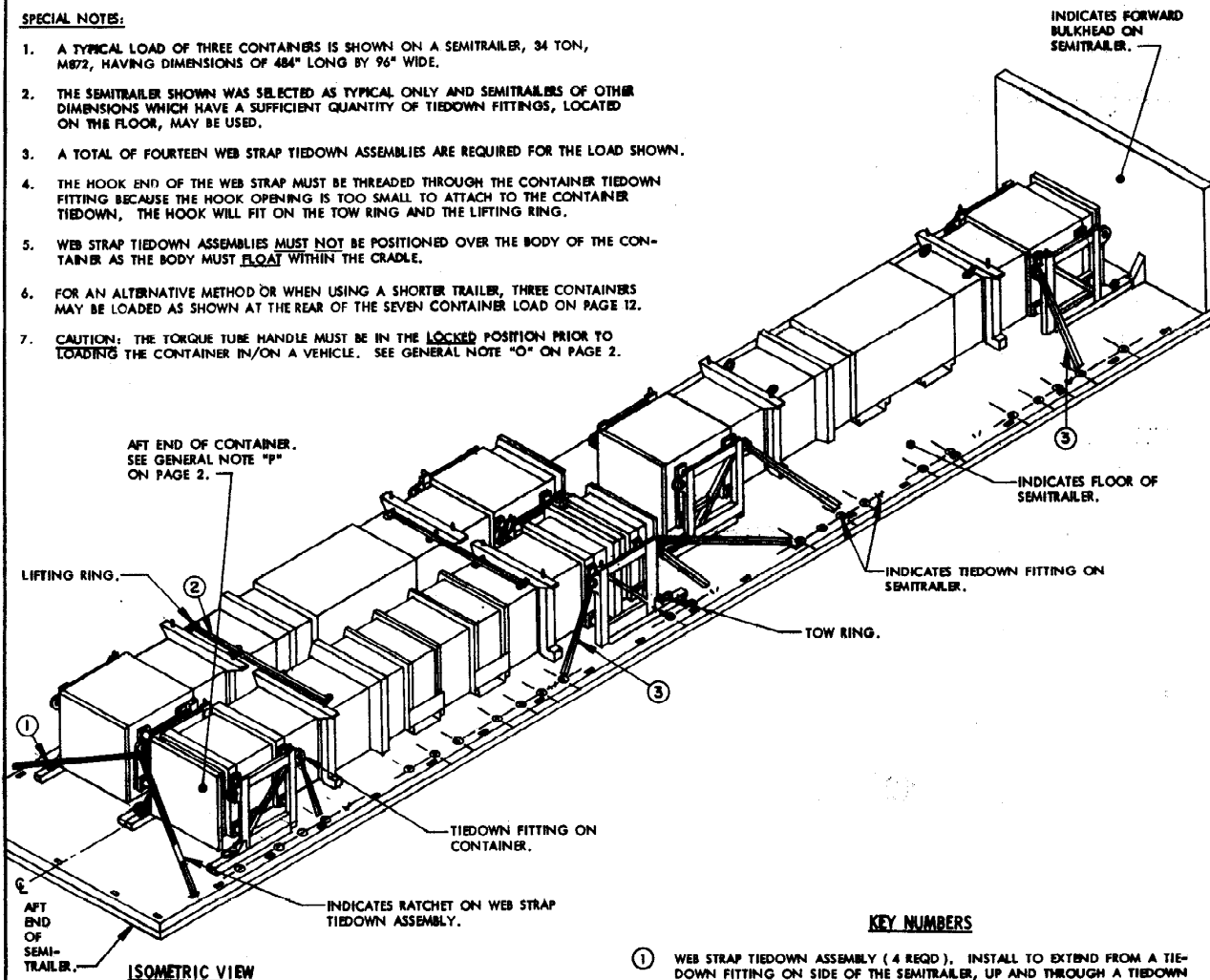
- ① WEB STRAP TIEDOWN ASSEMBLY (4 REQD). INSTALL TO EXTEND FROM A TIEDOWN FITTING ON SIDE OF THE SEMITRAILER, UP AND THROUGH A TIEDOWN FITTING ON THE FARTHEST CONTAINER, BACK TO THE SAME TIEDOWN FITTING ON SIDE OF THE SEMITRAILER. THESE STRAPS MUST BE PRE-POSITIONED. SEE SPECIAL NOTE 4 ON THIS PAGE.
- ② WEB STRAP TIEDOWN ASSEMBLY (2 REQD). INSTALL TO EXTEND FROM AN OUTSIDE LIFTING RING ON ONE CONTAINER TO AN OUTSIDE LIFTING RING ON THE OPPOSITE CONTAINER.
- ③ WEB STRAP TIEDOWN ASSEMBLY (4 REQD). INSTALL TO EXTEND FROM A TIEDOWN FITTING ON SIDE OF THE SEMITRAILER, UP AND THROUGH A CONTAINER TIEDOWN FITTING, BACK TO THE SAME TIEDOWN FITTING ON SIDE OF THE SEMITRAILER. SEE SPECIAL NOTE 4 ON THIS PAGE.

LOAD AS SHOWN

ITEM	QUANTITY	WEIGHT (APPROX)
CONTAINER	2	7,500 LBS

SPECIAL NOTES:

1. A TYPICAL LOAD OF THREE CONTAINERS IS SHOWN ON A SEMITRAILER, 34 TON, M872, HAVING DIMENSIONS OF 484" LONG BY 96" WIDE.
2. THE SEMITRAILER SHOWN WAS SELECTED AS TYPICAL ONLY AND SEMITRAILERS OF OTHER DIMENSIONS WHICH HAVE A SUFFICIENT QUANTITY OF TIEDOWN FITTINGS, LOCATED ON THE FLOOR, MAY BE USED.
3. A TOTAL OF FOURTEEN WEB STRAP TIEDOWN ASSEMBLIES ARE REQUIRED FOR THE LOAD SHOWN.
4. THE HOOK END OF THE WEB STRAP MUST BE THREADED THROUGH THE CONTAINER LIFTING FITTING BECAUSE THE HOOK OPENING IS TOO SMALL TO ATTACH TO THE CONTAINER TIEDOWN, THE HOOK WILL FIT ON THE TOW RING AND THE LIFTING RING.
5. WEB STRAP TIEDOWN ASSEMBLIES MUST NOT BE POSITIONED OVER THE BODY OF THE CONTAINER AS THE BODY MUST FLOAT WITHIN THE CRADLE.
6. FOR AN ALTERNATIVE METHOD OR WHEN USING A SHORTER TRAILER, THREE CONTAINERS MAY BE LOADED AS SHOWN AT THE REAR OF THE SEVEN CONTAINER LOAD ON PAGE 12.
7. CAUTION: THE TORQUE TUBE HANDLE MUST BE IN THE LOCKED POSITION PRIOR TO LOADING THE CONTAINER IN/ON A VEHICLE. SEE GENERAL NOTE "O" ON PAGE 2.



KEY NUMBERS

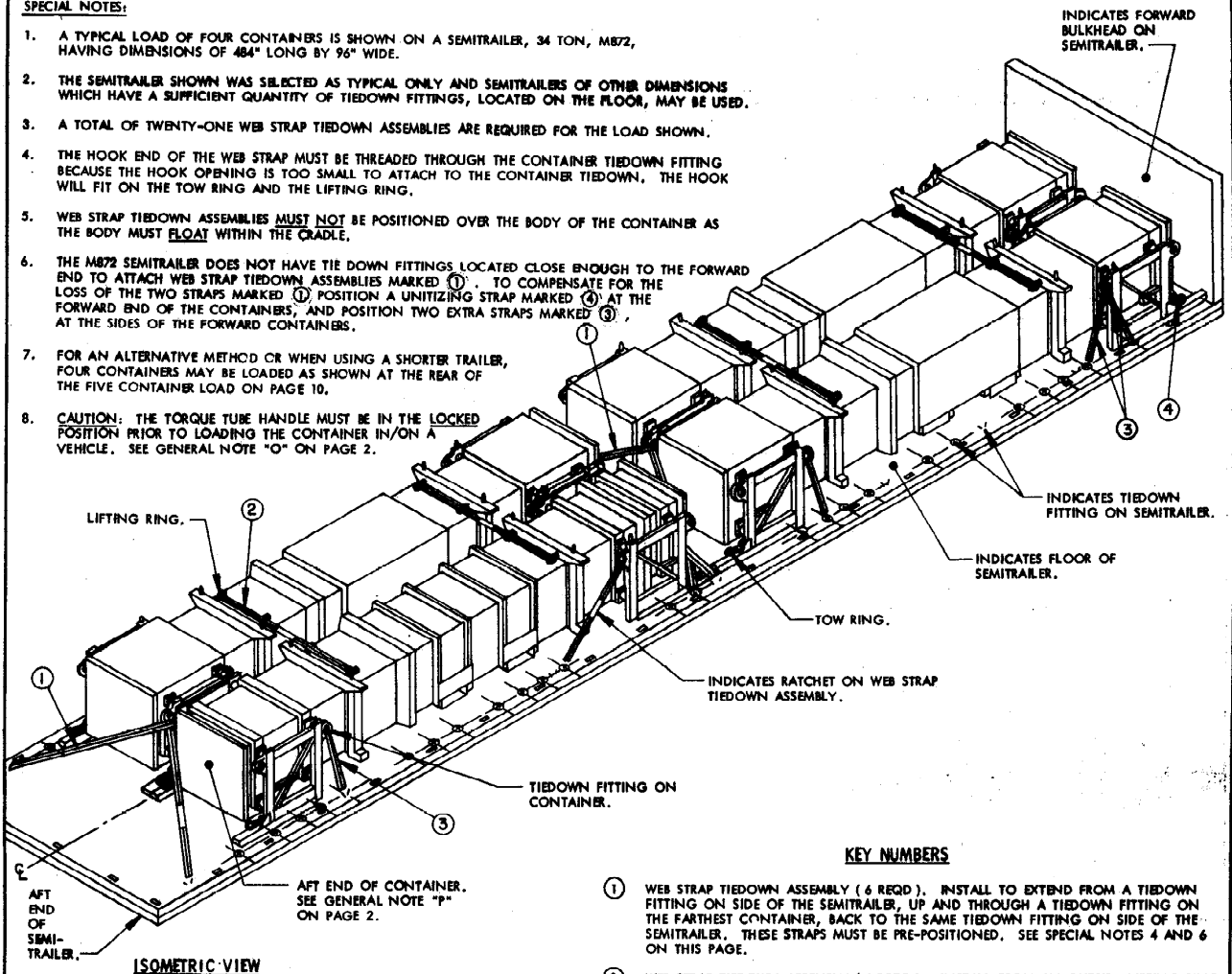
- ① WEB STRAP TIEDOWN ASSEMBLY (4 REQD). INSTALL TO EXTEND FROM A TIEDOWN FITTING ON SIDE OF THE SEMITRAILER, UP AND THROUGH A TIEDOWN FITTING ON THE FARTHEST CONTAINER, BACK TO THE SAME TIEDOWN FITTING ON SIDE OF THE SEMITRAILER. THESE STRAPS MUST BE PRE-POSITIONED. SEE SPECIAL NOTE 4 ON THIS PAGE.
- ② WEB STRAP TIEDOWN ASSEMBLY (2 REQD). INSTALL TO EXTEND FROM AN OUTSIDE LIFTING RING ON ONE CONTAINER TO AN OUTSIDE LIFTING RING ON THE OPPOSITE CONTAINER.
- ③ WEB STRAP TIEDOWN ASSEMBLY (8 REQD). INSTALL TO EXTEND FROM A TIEDOWN FITTING ON SIDE OF THE SEMITRAILER, UP AND THROUGH A CONTAINER TIEDOWN FITTING, BACK TO THE SAME TIEDOWN FITTING ON SIDE OF THE SEMITRAILER. SEE SPECIAL NOTE 4 ON THIS PAGE.

LOAD AS SHOWN

ITEM	QUANTITY	WEIGHT (APPROX)
CONTAINER	3	11,250 LBS

SPECIAL NOTES:

1. A TYPICAL LOAD OF FOUR CONTAINERS IS SHOWN ON A SEMITRAILER, 34 TON, M872, HAVING DIMENSIONS OF 484" LONG BY 96" WIDE.
2. THE SEMITRAILER SHOWN WAS SELECTED AS TYPICAL ONLY AND SEMITRAILERS OF OTHER DIMENSIONS WHICH HAVE A SUFFICIENT QUANTITY OF TIEDOWN FITTINGS, LOCATED ON THE FLOOR, MAY BE USED.
3. A TOTAL OF TWENTY-ONE WEB STRAP TIEDOWN ASSEMBLIES ARE REQUIRED FOR THE LOAD SHOWN.
4. THE HOOK END OF THE WEB STRAP MUST BE THREADED THROUGH THE CONTAINER TIEDOWN FITTING BECAUSE THE HOOK OPENING IS TOO SMALL TO ATTACH TO THE CONTAINER TIEDOWN, THE HOOK WILL FIT ON THE TOW RING AND THE LIFTING RING.
5. WEB STRAP TIEDOWN ASSEMBLIES MUST NOT BE POSITIONED OVER THE BODY OF THE CONTAINER AS THE BODY MUST FLOAT WITHIN THE CRADLE.
6. THE M872 SEMITRAILER DOES NOT HAVE TIE DOWN FITTINGS LOCATED CLOSE ENOUGH TO THE FORWARD END TO ATTACH WEB STRAP TIEDOWN ASSEMBLIES MARKED ①. TO COMPENSATE FOR THE LOSS OF THE TWO STRAPS MARKED ① POSITION A UNITIZING STRAP MARKED ④ AT THE FORWARD END OF THE CONTAINERS, AND POSITION TWO EXTRA STRAPS MARKED ③ AT THE SIDES OF THE FORWARD CONTAINERS.
7. FOR AN ALTERNATIVE METHOD OR WHEN USING A SHORTER TRAILER, FOUR CONTAINERS MAY BE LOADED AS SHOWN AT THE REAR OF THE FIVE CONTAINER LOAD ON PAGE 10.
8. CAUTION: THE TORQUE TUBE HANDLE MUST BE IN THE LOCKED POSITION PRIOR TO LOADING THE CONTAINER IN/ON A VEHICLE. SEE GENERAL NOTE "O" ON PAGE 2.



KEY NUMBERS

- ① WEB STRAP TIEDOWN ASSEMBLY (6 REQD). INSTALL TO EXTEND FROM A TIEDOWN FITTING ON SIDE OF THE SEMITRAILER, UP AND THROUGH A TIEDOWN FITTING ON THE FARTHEST CONTAINER, BACK TO THE SAME TIEDOWN FITTING ON SIDE OF THE SEMITRAILER. THESE STRAPS MUST BE PRE-POSITIONED. SEE SPECIAL NOTES 4 AND 6 ON THIS PAGE.
- ② WEB STRAP TIEDOWN ASSEMBLY (4 REQD). INSTALL FROM AN OUTSIDE LIFTING RING ON ONE CONTAINER TO AN OUTSIDE LIFTING RING ON THE OPPOSITE CONTAINER.
- ③ WEB STRAP TIEDOWN ASSEMBLY (10 REQD). INSTALL TO EXTEND FROM A TIEDOWN FITTING ON SIDE OF THE SEMITRAILER, UP AND THROUGH A CONTAINER TIEDOWN FITTING, BACK TO THE SAME TIEDOWN FITTING ON SIDE OF THE SEMITRAILER. SEE SPECIAL NOTES 4 AND 6 ON THIS PAGE.
- ④ WEB STRAP TIEDOWN ASSEMBLY (1 REQD). INSTALL FROM AN OUTSIDE TOW RING ON ONE CONTAINER TO AN OUTSIDE TOW RING ON THE OPPOSITE CONTAINER. SEE SPECIAL NOTE 6 ON THIS PAGE.

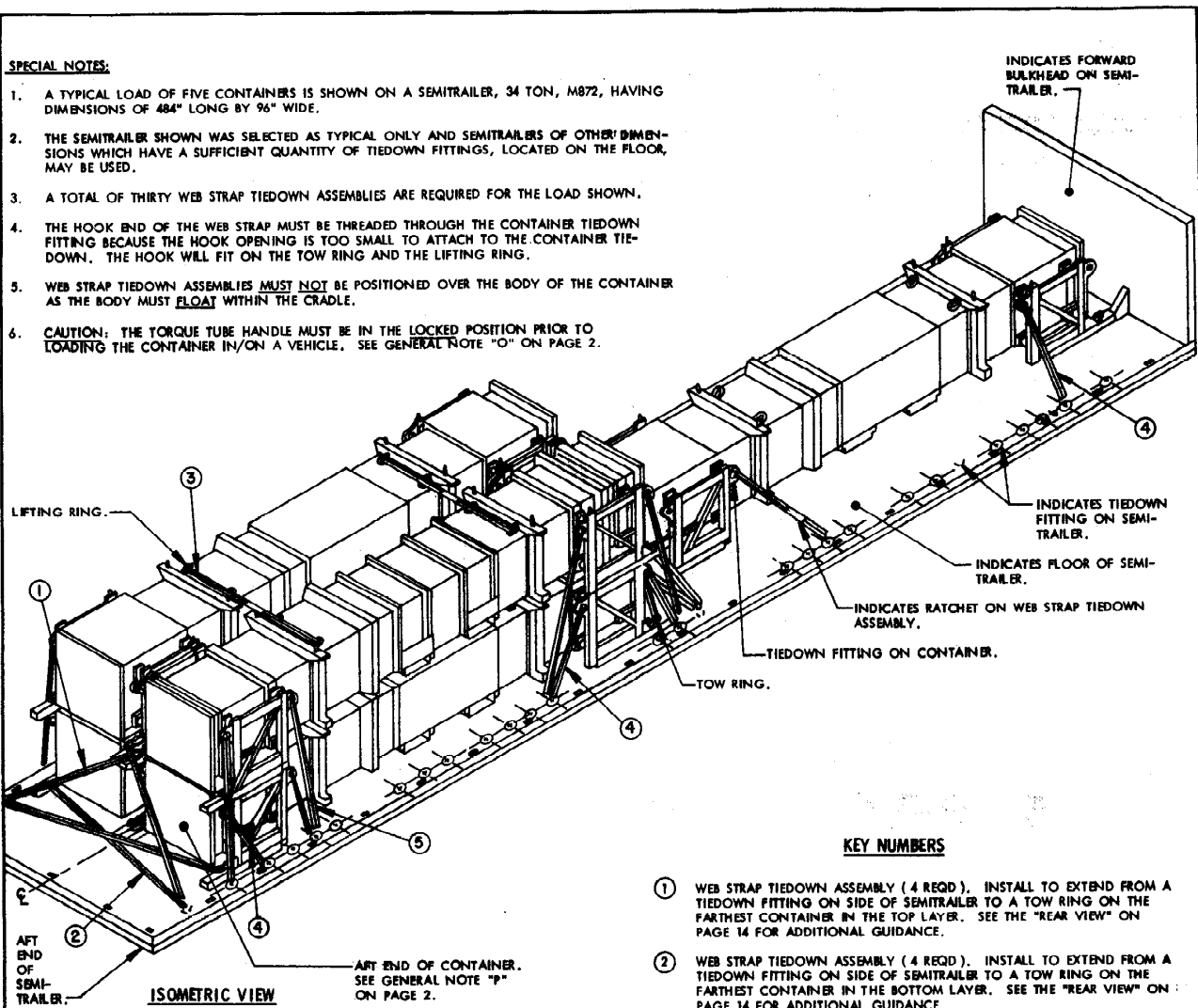
LOAD AS SHOWN

ITEM	QUANTITY	WEIGHT (APPROX)
CONTAINER-----	4-----	15,000 LBS

FOUR CONTAINERS

SPECIAL NOTES:

1. A TYPICAL LOAD OF FIVE CONTAINERS IS SHOWN ON A SEMITRAILER, 34 TON, M872, HAVING DIMENSIONS OF 484" LONG BY 96" WIDE.
2. THE SEMITRAILER SHOWN WAS SELECTED AS TYPICAL ONLY AND SEMITRAILERS OF OTHER DIMENSIONS WHICH HAVE A SUFFICIENT QUANTITY OF TIEDOWN FITTINGS, LOCATED ON THE FLOOR, MAY BE USED.
3. A TOTAL OF THIRTY WEB STRAP TIEDOWN ASSEMBLIES ARE REQUIRED FOR THE LOAD SHOWN.
4. THE HOOK END OF THE WEB STRAP MUST BE THREADED THROUGH THE CONTAINER TIEDOWN FITTING BECAUSE THE HOOK OPENING IS TOO SMALL TO ATTACH TO THE CONTAINER TIEDOWN. THE HOOK WILL FIT ON THE TOW RING AND THE LIFTING RING.
5. WEB STRAP TIEDOWN ASSEMBLIES MUST NOT BE POSITIONED OVER THE BODY OF THE CONTAINER AS THE BODY MUST FLOAT WITHIN THE CRADLE.
6. CAUTION: THE TORQUE TUBE HANDLE MUST BE IN THE LOCKED POSITION PRIOR TO LOADING THE CONTAINER IN/ON A VEHICLE. SEE GENERAL NOTE "O" ON PAGE 2.



KEY NUMBERS

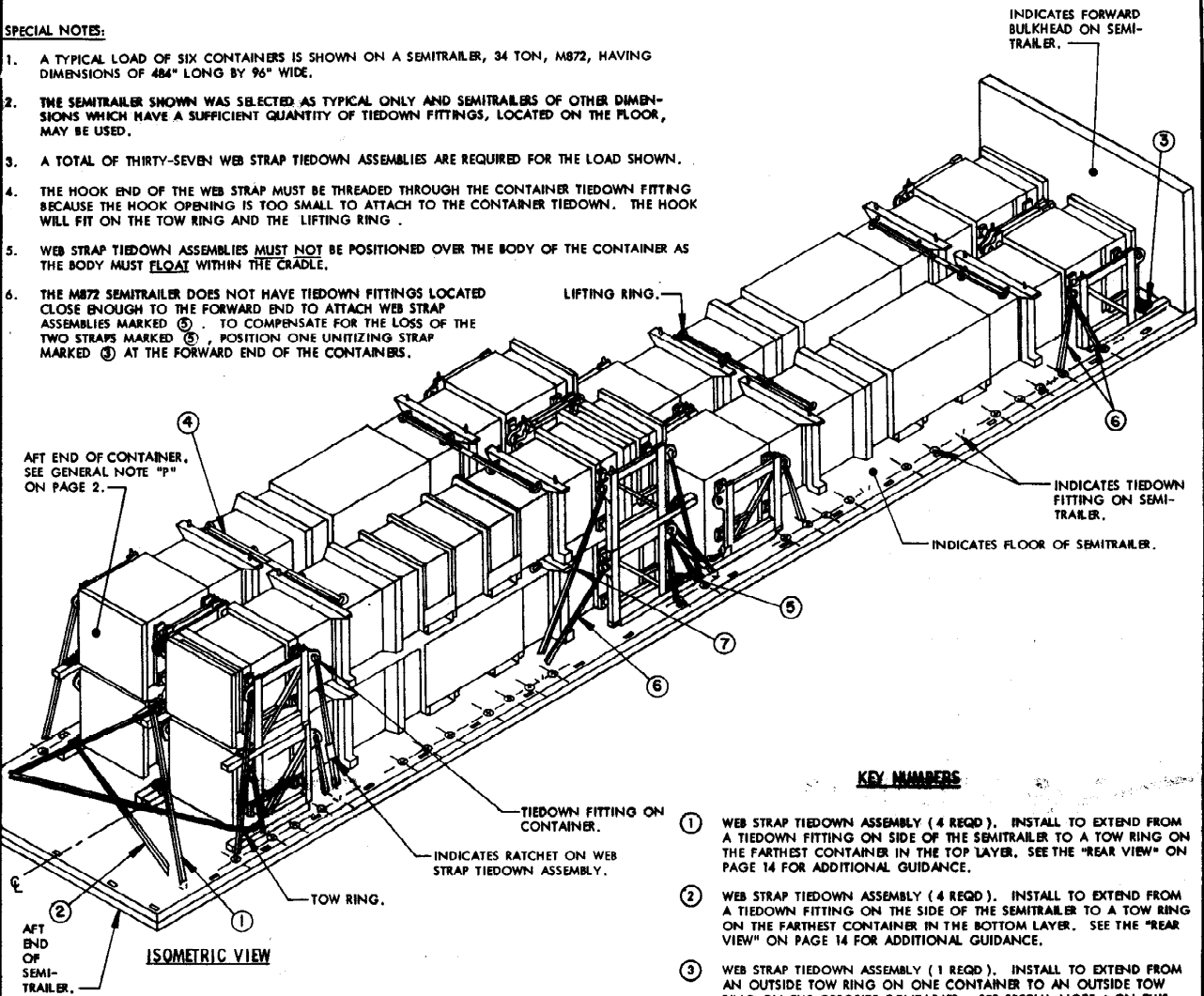
- ① WEB STRAP TIEDOWN ASSEMBLY (4 REQD). INSTALL TO EXTEND FROM A TIEDOWN FITTING ON SIDE OF SEMITRAILER TO A TOW RING ON THE FARTHEST CONTAINER IN THE TOP LAYER. SEE THE "REAR VIEW" ON PAGE 14 FOR ADDITIONAL GUIDANCE.
- ② WEB STRAP TIEDOWN ASSEMBLY (4 REQD). INSTALL TO EXTEND FROM A TIEDOWN FITTING ON SIDE OF SEMITRAILER TO A TOW RING ON THE FARTHEST CONTAINER IN THE BOTTOM LAYER. SEE THE "REAR VIEW" ON PAGE 14 FOR ADDITIONAL GUIDANCE.
- ③ WEB STRAP TIEDOWN ASSEMBLY (2 REQD). INSTALL TO EXTEND FROM AN OUTSIDE LIFTING RING ON ONE CONTAINER TO AN OUTSIDE LIFTING RING ON THE OPPOSITE CONTAINER. SEE SPECIAL NOTE 4 ON THIS PAGE.
- ④ WEB STRAP TIEDOWN ASSEMBLY (12 REQD). INSTALL TO EXTEND FROM A TIEDOWN FITTING ON THE SIDE OF THE SEMITRAILER, UP AND THROUGH A CONTAINER TIEDOWN FITTING ON THE BOTTOM CONTAINER, BACK TO THE SAME TIEDOWN ON SIDE OF THE SEMITRAILER. SEE SPECIAL NOTE 4 ON THIS PAGE.
- ⑤ WEB STRAP TIEDOWN ASSEMBLY (8 REQD). INSTALL TO EXTEND FROM A TIEDOWN FITTING ON THE SIDE OF THE SEMITRAILER, UP AND THROUGH A CONTAINER TIEDOWN FITTING ON THE TOP CONTAINER, BACK TO THE SAME TIEDOWN FITTING ON SIDE OF THE SEMITRAILER. SEE SPECIAL NOTE 4 ON THIS PAGE.

LOAD AS SHOWN

ITEM	QUANTITY	WEIGHT (APPROX)
CONTAINER	5	10,750 LBS

SPECIAL NOTES:

1. A TYPICAL LOAD OF SIX CONTAINERS IS SHOWN ON A SEMITRAILER, 34 TON, M872, HAVING DIMENSIONS OF 484" LONG BY 96" WIDE.
2. THE SEMITRAILER SHOWN WAS SELECTED AS TYPICAL ONLY AND SEMITRAILERS OF OTHER DIMENSIONS WHICH HAVE A SUFFICIENT QUANTITY OF TIEDOWN FITTINGS, LOCATED ON THE FLOOR, MAY BE USED.
3. A TOTAL OF THIRTY-SEVEN WEB STRAP TIEDOWN ASSEMBLIES ARE REQUIRED FOR THE LOAD SHOWN.
4. THE HOOK END OF THE WEB STRAP MUST BE THREADED THROUGH THE CONTAINER TIEDOWN FITTING BECAUSE THE HOOK OPENING IS TOO SMALL TO ATTACH TO THE CONTAINER TIEDOWN. THE HOOK WILL FIT ON THE TOW RING AND THE LIFTING RING.
5. WEB STRAP TIEDOWN ASSEMBLIES MUST NOT BE POSITIONED OVER THE BODY OF THE CONTAINER AS THE BODY MUST FLOAT WITHIN THE CRADLE.
6. THE M872 SEMITRAILER DOES NOT HAVE TIEDOWN FITTINGS LOCATED CLOSE ENOUGH TO THE FORWARD END TO ATTACH WEB STRAP ASSEMBLIES MARKED ⑤. TO COMPENSATE FOR THE LOSS OF THE TWO STRAPS MARKED ⑥, POSITION ONE UNITIZING STRAP MARKED ③ AT THE FORWARD END OF THE CONTAINERS.



KEY NUMBERS

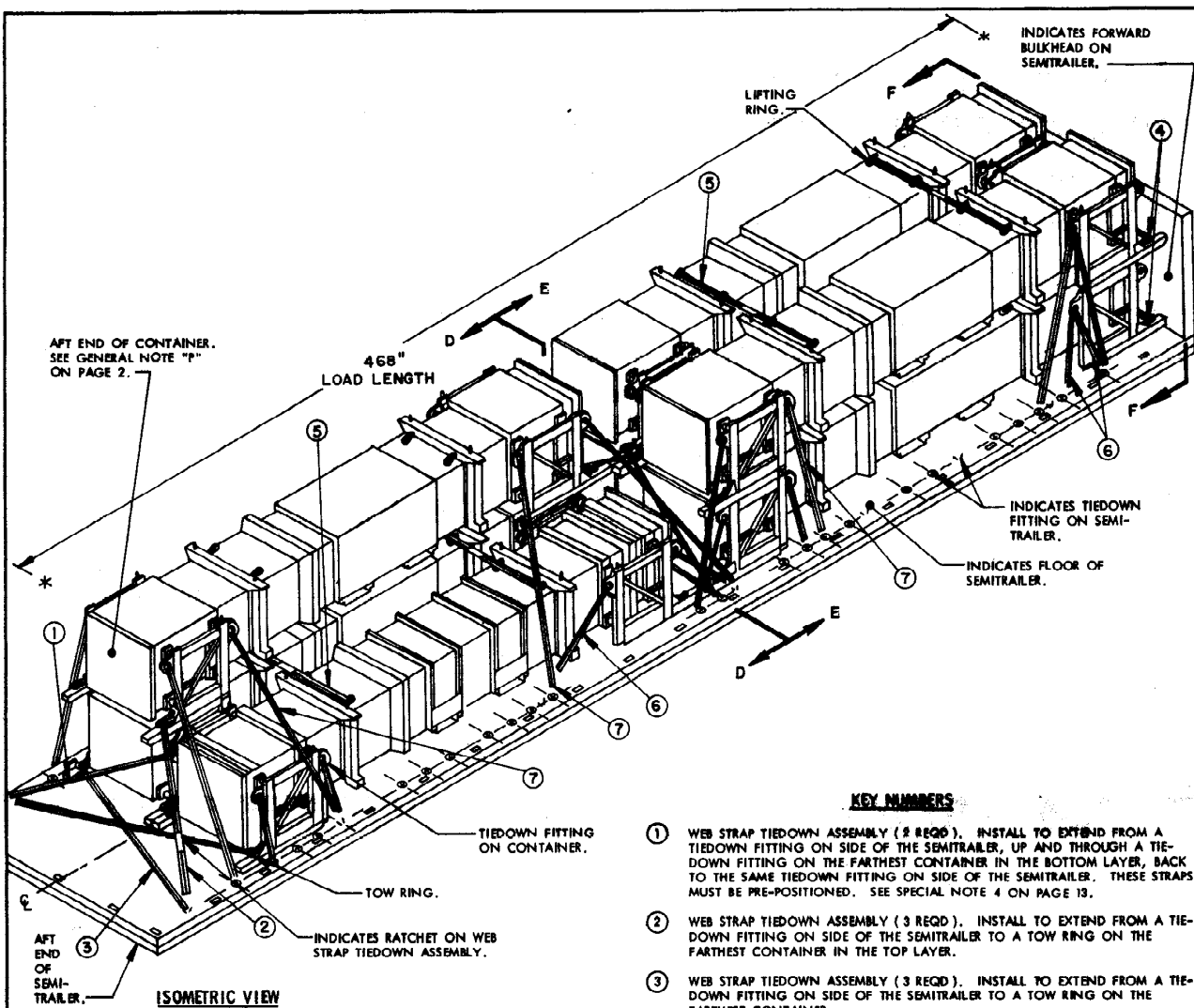
- ① WEB STRAP TIEDOWN ASSEMBLY (4 REQD). INSTALL TO EXTEND FROM A TIEDOWN FITTING ON SIDE OF THE SEMITRAILER TO A TOW RING ON THE FARTHEST CONTAINER IN THE TOP LAYER. SEE THE "REAR VIEW" ON PAGE 14 FOR ADDITIONAL GUIDANCE.
- ② WEB STRAP TIEDOWN ASSEMBLY (4 REQD). INSTALL TO EXTEND FROM A TIEDOWN FITTING ON THE SIDE OF THE SEMITRAILER TO A TOW RING ON THE FARTHEST CONTAINER IN THE BOTTOM LAYER. SEE THE "REAR VIEW" ON PAGE 14 FOR ADDITIONAL GUIDANCE.
- ③ WEB STRAP TIEDOWN ASSEMBLY (1 REQD). INSTALL TO EXTEND FROM AN OUTSIDE TOW RING ON ONE CONTAINER TO AN OUTSIDE TOW RING ON THE OPPOSITE CONTAINER. SEE SPECIAL NOTE 6 ON THIS PAGE.
- ④ WEB STRAP TIEDOWN ASSEMBLY (4 REQD). INSTALL TO EXTEND FROM AN OUTSIDE LIFTING RING ON ONE CONTAINER TO AN OUTSIDE LIFTING RING ON THE OPPOSITE CONTAINER.
- ⑤ WEB STRAP TIEDOWN ASSEMBLY (2 REQD). INSTALL TO EXTEND FROM A TIEDOWN FITTING ON THE SIDE OF THE SEMITRAILER, UP AND THROUGH A CONTAINER TIEDOWN FITTING ON THE FARTHEST CONTAINER, BACK TO THE SAME TIEDOWN FITTING ON SIDE OF THE SEMITRAILER. THESE STRAPS MUST BE PRE-POSITIONED. SEE SPECIAL NOTES 4 AND 7.
- ⑥ WEB STRAP TIEDOWN ASSEMBLY (14 REQD). INSTALL TO EXTEND FROM A TIEDOWN FITTING ON THE SIDE OF THE SEMITRAILER, UP AND THROUGH A CONTAINER TIEDOWN FITTING ON THE BOTTOM CONTAINER, BACK TO THE SAME TIEDOWN FITTING ON SIDE OF THE SEMITRAILER. SEE SPECIAL NOTE 4 ON THIS PAGE.
- ⑦ WEB STRAP TIEDOWN ASSEMBLY (8 REQD). INSTALL TO EXTEND FROM A TIEDOWN FITTING ON THE SIDE OF THE SEMITRAILER, UP AND THROUGH A CONTAINER TIEDOWN FITTING ON THE TOP CONTAINER, BACK TO THE SAME TIEDOWN FITTING ON SIDE OF THE SEMITRAILER. SEE SPECIAL NOTE 4 ON THIS PAGE.

(SPECIAL NOTES CONTINUED)

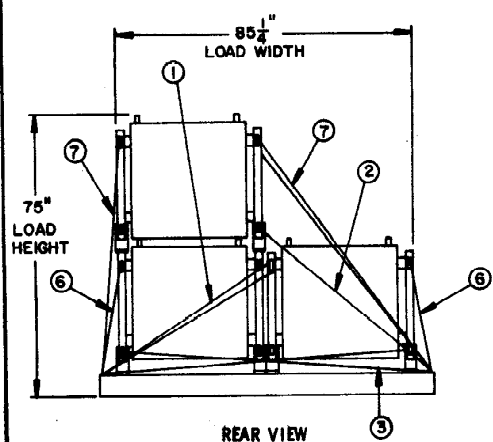
7. FOR LOCATION OF THE TWO WEB STRAP TIEDOWN ASSEMBLIES MARKED ④, WHICH ARE ATTACHED TO THE REAR OF THE TWO FORWARD CONTAINERS, SEE PIECES MARKED ①, IN THE TWO CONTAINER LOAD ON PAGE 7.
8. **CAUTION:** THE TORQUE TUBE HANDLE MUST BE IN THE LOCKED POSITION PRIOR TO LOADING THE CONTAINER IN/ON A VEHICLE. SEE GENERAL NOTE "O" ON PAGE 2.

LOAD AS SHOWN

ITEM	QUANTITY	WEIGHT (APPROX)
CONTAINER	6	22,500 LBS



ISOMETRIC VIEW



REAR VIEW

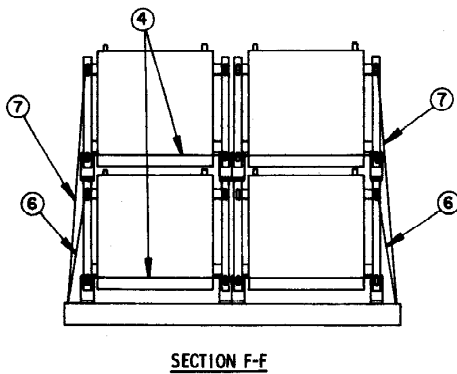
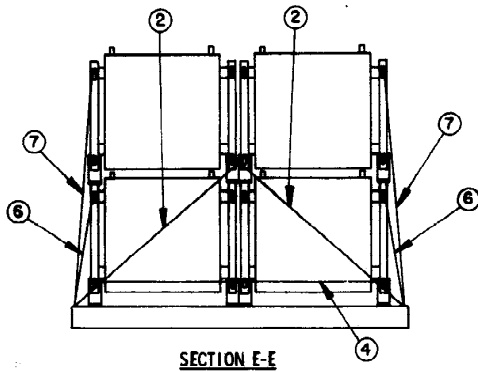
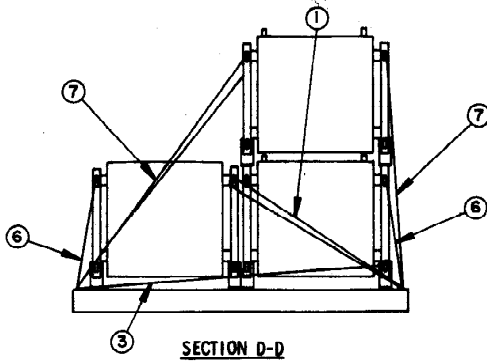
KEY NUMBERS

- ① WEB STRAP TIEDOWN ASSEMBLY (8 REQD). INSTALL TO EXTEND FROM A TIEDOWN FITTING ON SIDE OF THE SEMITRAILER, UP AND THROUGH A TIEDOWN FITTING ON THE FARTHEST CONTAINER IN THE BOTTOM LAYER, BACK TO THE SAME TIEDOWN FITTING ON SIDE OF THE SEMITRAILER. THESE STRAPS MUST BE PRE-POSITIONED. SEE SPECIAL NOTE 4 ON PAGE 13.
- ② WEB STRAP TIEDOWN ASSEMBLY (3 REQD). INSTALL TO EXTEND FROM A TIEDOWN FITTING ON SIDE OF THE SEMITRAILER TO A TOW RING ON THE FARTHEST CONTAINER IN THE TOP LAYER.
- ③ WEB STRAP TIEDOWN ASSEMBLY (3 REQD). INSTALL TO EXTEND FROM A TIEDOWN FITTING ON SIDE OF THE SEMITRAILER TO A TOW RING ON THE FARTHEST CONTAINER.
- ④ WEB STRAP TIEDOWN ASSEMBLY (3 REQD). INSTALL TO EXTEND FROM AN OUTSIDE TOW RING ON ONE CONTAINER TO AN OUTSIDE TOW RING ON THE OPPOSITE CONTAINER. SEE SPECIAL NOTE 6 ON PAGE 13.
- ⑤ WEB STRAP TIEDOWN ASSEMBLY (4 REQD). INSTALL TO EXTEND FROM AN OUTSIDE LIFTING RING ON ONE CONTAINER TO AN OUTSIDE LIFTING RING ON THE OPPOSITE CONTAINER.
- ⑥ WEB STRAP TIEDOWN ASSEMBLY (16 REQD). INSTALL TO EXTEND FROM A TIEDOWN FITTING ON THE SIDE OF THE SEMITRAILER, UP AND THROUGH A CONTAINER TIEDOWN FITTING ON THE TOP CONTAINER, BACK TO THE SAME TIEDOWN FITTING ON SIDE OF THE SEMITRAILER. SEE SPECIAL NOTE 4 ON PAGE 13.
- ⑦ WEB STRAP TIEDOWN ASSEMBLY (16 REQD). INSTALL TO EXTEND FROM A TIEDOWN FITTING ON THE SIDE OF THE SEMITRAILER, UP AND THROUGH A CONTAINER TIEDOWN FITTING ON THE TOP CONTAINER, BACK TO THE SAME TIEDOWN FITTING ON SIDE OF THE SEMITRAILER. SEE SPECIAL NOTE 4 ON PAGE 13.

SEVEN CONTAINERS

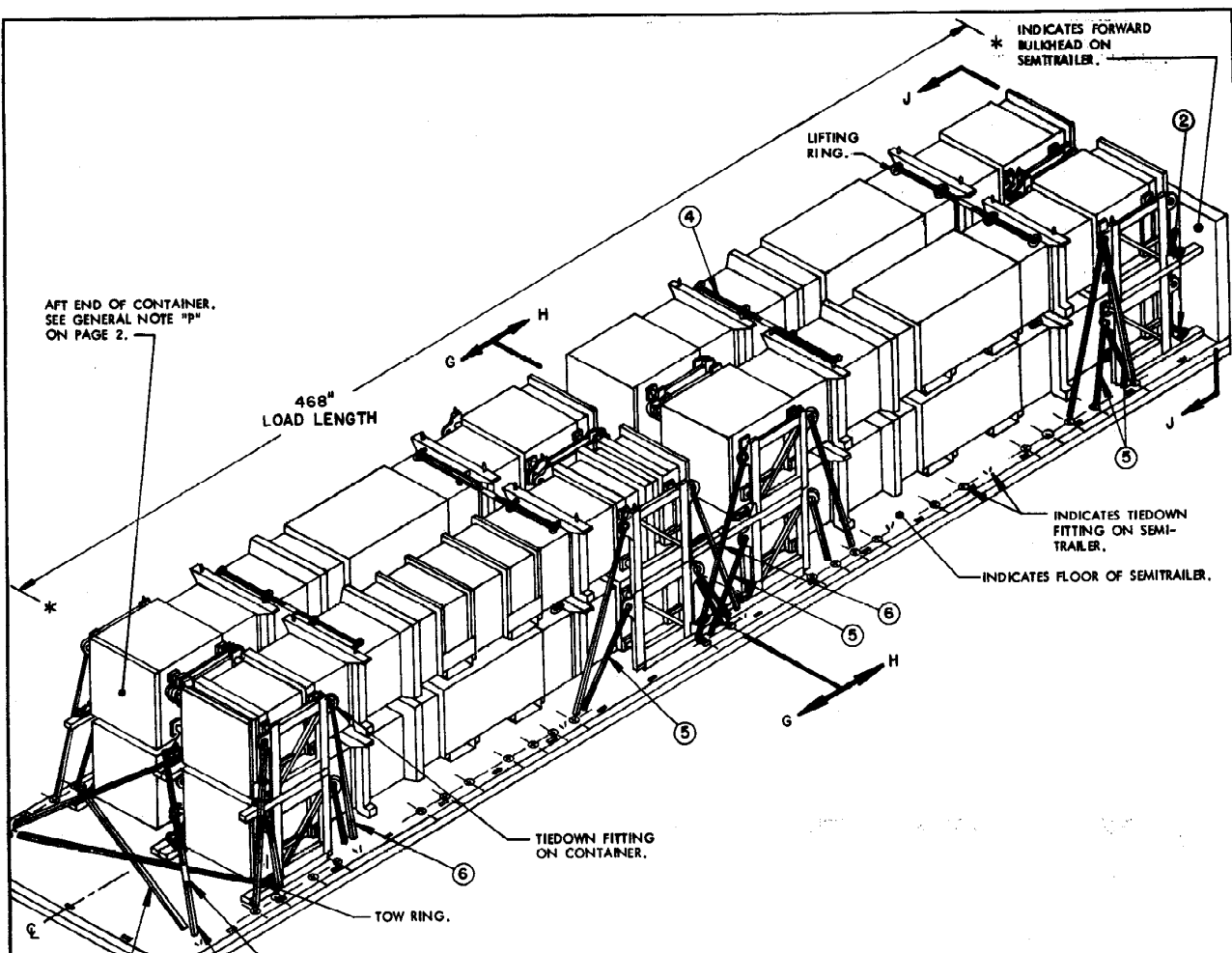
SPECIAL NOTES:

1. A TYPICAL LOAD OF SEVEN CONTAINERS IS SHOWN ON A SEMI-TRAILER, 34 TON, M872, HAVING DIMENSIONS OF 484" LONG BY 96" WIDE.
2. THE SEMITRAILER SHOWN WAS SELECTED AS TYPICAL ONLY AND SEMITRAILERS OF OTHER DIMENSIONS WHICH HAVE A SUFFICIENT QUANTITY OF TIEDOWN FITTING, LOCATED ON THE FLOOR, MAY BE USED.
3. A TOTAL OF FOURTY-SEVEN WEB STRAP TIEDOWN ASSEMBLIES ARE REQUIRED FOR THE LOAD SHOWN.
4. THE HOOK END OF THE WEB STRAP MUST BE THREADED THROUGH THE CONTAINER TIEDOWN FITTING BECAUSE THE HOOK OPENING IS TOO SMALL TO ATTACH TO THE CONTAINER TIEDOWN. THE HOOK WILL FIT ON THE TOW RING AND THE LIFTING RING.
5. WEB STRAP TIEDOWN ASSEMBLIES MUST NOT BE POSITIONED OVER THE BODY OF THE CONTAINER AS THE BODY MUST FLOAT WITHIN THE CRADLE.
6. THE M872 TRAILER DOES NOT HAVE TIEDOWN FITTINGS LOCATED CLOSE ENOUGH TO THE FORWARD END TO ATTACH WEB STRAP TIEDOWN ASSEMBLIES MARKED ② AND ③. TO COMPENSATE FOR THE LOSS OF THE TWO STRAPS MARKED ② AND THE TWO STRAPS MARKED ③, POSITION ONE UNITIZING STRAP MARKED ④ AT THE FORWARD END OF THE BOTTOM CONTAINERS AND ONE UNITIZING STRAP MARKED ④ AT THE FORWARD END OF THE TOP CONTAINERS. SEE "SECTION F-F" ON THIS PAGE.
7. CAUTION: THE TORQUE TUBE HANDLE MUST BE IN THE LOCKED POSITION PRIOR TO LOADING THE CONTAINER IN/ON A VEHICLE. SEE GENERAL NOTE "O" ON PAGE 2.



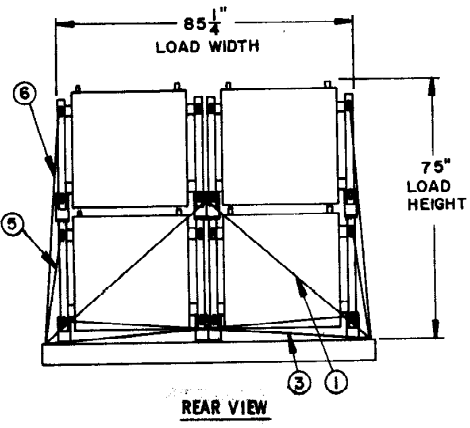
LOAD AS SHOWN

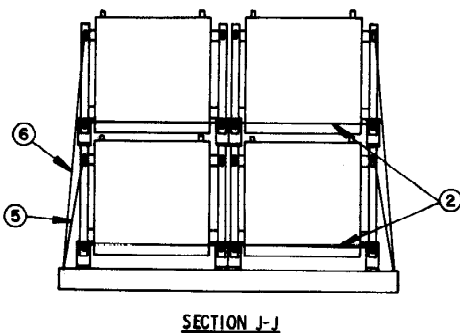
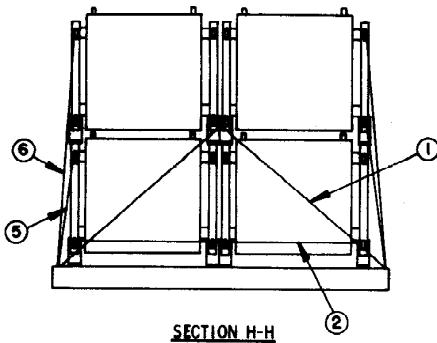
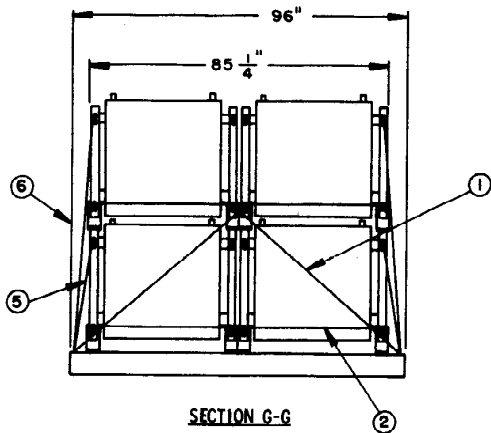
<u>ITEM</u>	<u>QUANTITY</u>	<u>WEIGHT (APPROX)</u>
CONTAINER-----	7-----	26,250 LBS



KEY NUMBERS

- ① WEB STRAP TIEDOWN ASSEMBLY (6 REQD). INSTALL TO EXTEND FROM A TIEDOWN FITTING ON SIDE OF THE SEMITRAILER TO A TOW RING ON THE FARTHEST CONTAINER IN THE TOP LAYER.
- ② WEB STRAP TIEDOWN ASSEMBLY (4 REQD). INSTALL TO EXTEND FROM AN OUTSIDE TOW RING ON ONE CONTAINER TO AN OUTSIDE TOW RING ON THE OPPOSITE CONTAINER. SEE SPECIAL NOTE 6 ON PAGE 15.
- ③ WEB STRAP TIEDOWN ASSEMBLY (2 REQD). INSTALL TO EXTEND FROM A TIEDOWN FITTING ON SIDE OF THE SEMITRAILER TO A TOW RING ON THE FARTHEST CONTAINER IN THE BOTTOM LAYER.
- ④ WEB STRAP TIEDOWN ASSEMBLY (4 REQD). INSTALL TO EXTEND FROM AN OUTSIDE LIFTING RING ON ONE CONTAINER TO AN OUTSIDE LIFTING RING ON THE OPPOSITE CONTAINER.
- ⑤ WEB STRAP TIEDOWN ASSEMBLY (16 REQD). INSTALL TO EXTEND FROM A TIEDOWN FITTING ON THE SIDE OF THE SEMITRAILER, UP AND THROUGH A CONTAINER TIEDOWN FITTING ON THE BOTTOM CONTAINER, BACK TO THE SAME TIEDOWN FITTING ON SIDE OF THE SEMITRAILER. SEE SPECIAL NOTE 4 ON PAGE 15.
- ⑥ WEB STRAP TIEDOWN ASSEMBLY (16 REQD). INSTALL TO EXTEND FROM A TIEDOWN FITTING ON THE SIDE OF THE SEMITRAILER, UP AND THROUGH A CONTAINER TIEDOWN FITTING ON THE TOP CONTAINER, BACK TO THE SAME TIEDOWN FITTING ON SIDE OF THE SEMITRAILER. SEE SPECIAL NOTE 4 ON PAGE 15.





SPECIAL NOTES:

1. A TYPICAL LOAD OF EIGHT CONTAINERS IS SHOWN ON A SEMI-TRAILER, 34 TON, M872, HAVING DIMENSIONS OF 484" LONG BY 96" WIDE.
2. THE SEMI-TRAILER SHOWN WAS SELECTED AS TYPICAL ONLY AND SEMI-TRAILERS OF OTHER DIMENSIONS WHICH HAVE A SUFFICIENT QUANTITY OF TIEDOWN FITTINGS, LOCATED ON THE FLOOR, MAY BE USED.
3. A TOTAL OF FOURTY-EIGHT WEB STRAP TIEDOWN ASSEMBLIES ARE REQUIRED FOR THE LOAD SHOWN.
4. THE HOOK END OF THE WEB STRAP MUST BE THREADED THROUGH THE CONTAINER TIEDOWN FITTING BECAUSE THE HOOK OPENING IS TOO SMALL TO ATTACH TO THE CONTAINER TIEDOWN. THE HOOK WILL FIT ON THE TOW RING AND THE LIFTING RING.
5. WEB STRAP TIEDOWN ASSEMBLIES MUST NOT BE POSITIONED OVER THE BODY OF THE CONTAINER AS THE BODY MUST FLOAT WITHIN THE CRADLE.
6. THE M872 SEMI-TRAILER DOES NOT HAVE TIEDOWN FITTINGS LOCATED CLOSE ENOUGH TO THE FORWARD END TO ATTACH WEB STRAP TIEDOWN ASSEMBLIES MARKED ① AND ③. TO COMPENSATE FOR THE LOSS OF THE TWO STRAPS MARKED ① AND THE TWO STRAPS MARKED ③ POSITION ONE UNITIZING STRAP MARKED ② AT THE FORWARD END OF THE BOTTOM CONTAINERS AND ONE UNITIZING STRAP MARKED ② AT THE FORWARD END OF THE TOP CONTAINERS. SEE "SECTION J-J ON THIS PAGE.
7. **CAUTION:** THE TORQUE TUBE HANDLE MUST BE IN THE LOCKED POSITION PRIOR TO LOADING THE CONTAINER IN/ON A VEHICLE. SEE GENERAL NOTE "O" ON PAGE 2.

LOAD AS SHOWN

ITEM	QUANTITY	WEIGHT (APPROX)
CONTAINER-----	8	30,000 LBS

EIGHT CONTAINERS