

APPROVED BY
 BUREAU OF EXPLOSIVES
R. J. Prosser
 MILITARY ASSISTANT
 DATE 3/18/69

CHAPARRAL

LOADING AND BRACING (TL & LTL) IN CLOSED OR OPEN TOP VAN TRAILERS OF COMPLETE ROUND IN THE M570 SHIPPING AND STORAGE CONTAINER

INDEX

<u>ITEM</u>	<u>PAGE(S)</u>
GENERAL NOTES, AND MATERIAL SPECIFICATIONS-----	2
CONTAINER DETAIL AND HANDLING INSTRUCTIONS-----	3
75-UNIT LOAD IN A 33'-0" LONG, HIGH-VOLUME VAN TRAILER--	4, 5
48-UNIT LOAD IN A 33'-0" LONG TRAILER -----	6, 7
TYPICAL LTL PROCEDURES-----	8, 9
DETAILS -----	10-14

THIS DOCUMENT INCLUDES PROCEDURES FOR CONVENTIONAL TYPE TRAILERS AND FOR TRAILERS EQUIPPED WITH MECHANICAL BRACING DEVICES AS APPROVED BY THE BUREAU OF EXPLOSIVES, ASSOCIATION OF AMERICAN RAILROADS.

CAUTION:
 PROCEDURES SHOWN HEREIN FOR MECHANICAL BRACING DEVICE EQUIPPED TRAILERS ARE ONLY APPLICABLE FOR HIGHWAY MOVEMENT; NOT FOR CONTAINER/TRAILER-ON-FLAT-CAR MOVEMENTS.

<small>DRAFTER</small> RCA	<small>PROJ ENG</small> GWB/RLND	<small>ANSI-X3</small> Doh	<small>SUBMITTER</small> WRC	
<small>CHECKED</small> JDS	<small>ANSI-SPR</small> GWB	<small>ANSI-SPR</small> JPP	<small>COMMANDING OFFICER, SCYANNA ARMY DEPOT</small>	
REVISIONS				<small>APPROVED</small> <i>[Signature]</i> <small>ARMY MISSILE COMMAND</small>
				<small>APPROVED BY ORDER OF COMMANDING GENERAL</small> <small>U. S. ARMY MATERIEL COMMAND</small> <i>[Signature]</i>
				U. S. ARMY MATERIEL COMMAND
				28 APRIL 1969
<small>CLASS</small>	<small>DIVISION</small>	<small>DRAWING</small>	<small>FILE</small>	
19	48	5916	GM I1K2	

DO NOT SCALE

GENERAL NOTES

(GENERAL NOTES CONTINUED)

- A. THIS DOCUMENT HAS BEEN PREPARED AND ISSUED IN ACCORDANCE WITH AMCR 740-13, AND AUGMENTS TM 743-200-1 (CHAPTER 5).
- B. THE OUTLOADING PROCEDURES SPECIFIED HEREIN ARE APPLICABLE TO SHIPMENTS LOADED WITH VARIOUS SIZES OF CLOSED OR OPEN TOP VAN SEMITRAILERS, AND ARE FOR THE CHAPARRAL MISSILE WHEN PACKAGED IN THE M570 SHIPPING AND STORAGE CONTAINER. SUBSEQUENT REFERENCE TO CONTAINER HEREIN MEANS THE CONTAINER WITH CONTENTS.
- C. FOR DETAILS OF THE CONTAINER, SEE DRAWING NO. 11074804.
CONTAINER DIMENSIONS ---- 125" LONG X 18" WIDE X 19" HIGH.
GROSS WEIGHT ----- 280 POUNDS (APPROX).
TARE WEIGHT ----- 95 POUNDS (APPROX).
CUBE ----- 24.74 CUBIC FEET.
- D. THE DESIGNATED ITEM IS A DOT CLASS "A" EXPLOSIVE. THE OUTLOADING PROCEDURES SPECIFIED HEREIN CAN ALSO BE UTILIZED FOR THE SHIPMENT OF THE DEPICTED CONTAINERS WHEN THEY ARE EMPTY OR LOADED WITH AN ITEM WHICH IS IDENTIFIED DIFFERENTLY BY NOMENCLATURE THAN THE ITEM DESIGNATED WITHIN THE TITLE OF THIS DOCUMENT.
- E. THE LOAD AS SHOWN ON PAGES 4 AND 5 IS BASED ON A 33'-0" LONG HIGH-VOLUME VAN TRAILER WHICH DOES NOT HAVE REAR CORNER POSTS, WHICH IS 7'-9" WIDE BY 8'-0" HIGH (INSIDE DIMENSIONS) AND WHICH HAS A WOOD, OR A WOOD AND METAL, OR A METAL FLOOR. CAUTION: IF THE TRAILER BEING USED IS TO BE LOADED THROUGH THE REAR DOOR OPENING, THE HEIGHT OF THE DOOR OPENING, MEASURED FROM THE TRAILER FLOOR TO THE TOP FRAME MEMBER, MUST BE AT LEAST NINETY-FOUR INCHES (94") TO ALLOW FOR THE PLACEMENT OF THE TOP LAYER CONTAINERS OF THE REAR LOAD UNIT. THE DELINEATED PROCEDURES ARE ALSO APPLICABLE TO LONGER TRAILERS AND TO TRAILERS WHICH ARE NINETY-FOUR INCHES (94") AND UPWARD IN HEIGHT, AND TO TRAILERS WHICH HAVE REAR CORNER POSTS. HOWEVER, IF THE TRAILER BEING USED HAS REAR CORNER POSTS AND IS NOT AT LEAST 35'-0" LONG, THE 1" X 4" HORIZONTAL PIECES ON THE MOST REARWARD GATE IN THE LOAD CANNOT BE NAILED IN PLACE UNTIL AFTER THE "SEPARATOR ASSEMBLIES" OF THE GATE HAVE BEEN PLACED INTO POSITION.
- F. THE LOAD AS SHOWN ON PAGES 6 AND 7 IS BASED ON A 33'-0" LONG VAN TRAILER WHICH DOES NOT HAVE REAR CORNER POSTS, WHICH IS 7'-6" WIDE BY 7'-6" HIGH (INSIDE DIMENSIONS) AND WHICH HAS A WOOD, OR A WOOD AND METAL, OR A METAL FLOOR. THE DELINEATED PROCEDURES ARE ALSO APPLICABLE TO LONGER TRAILERS, TO TRAILERS OF ANY WIDTH, TO TRAILERS WHICH ARE SEVENTY-SIX INCHES (76") AND UPWARD IN HEIGHT AND TO TRAILERS WHICH HAVE REAR CORNER POSTS.
- G. IF A TRAILER IS BEING USED TO SHIP A 4-LAYER LOAD AND IT CONTAINS A MECHANICAL LOAD-BLOCKING SYSTEM WHICH CONFORMS TO SPECIFICATIONS SET FORTH WITHIN THE BUREAU OF EXPLOSIVES PAMPHLET 6C AND THE APPENDICES THERETO, THE MECHANICAL SYSTEM MAY BE USED IN ACCORDANCE WITH PROCEDURES DELINEATED ON PAGE 7 OF THIS DOCUMENT, IN LIEU OF REAR-OF-LOAD BLOCKING SPECIFIED FOR THE LOADS DEPICTED HEREIN.
- H. SELECTION OF A VEHICLE TO BE USED TO TRANSPORT THE DESIGNATED ITEM MUST COMPLY WITH AR 55-355, CHAPTER 213, FOR EXPLOSIVES AND OTHER DANGEROUS ARTICLES, IN FULL.
- J. GROSS WEIGHT AND AXLE DISTRIBUTION OF WEIGHT FOR A LOAD WILL BE THE RESPONSIBILITY OF THE CARRIER. THE CARRIER WILL ADVISE THE SHIPPER OF THE APPLICABLE LOADING REQUIREMENTS AND THE SHIPPER WILL LOAD ACCORDINGLY. NOTICE: A SHIPMENT WILL BE POSITIONED IN THE TRAILER CONSISTENT WITH THE STATE WEIGHT LAWS.
- K. THE APPROVED BLOCKING, BRACING, AND STAYING METHODS FOR THE LOADS SPECIFIED HEREIN MUST BE FOLLOWED. THE NUMBER OF UNITS MAY BE ADJUSTED TO FIT THE SIZE OF THE VEHICLE TO BE LOADED OR THE QUANTITY TO BE SHIPPED. FOR A LOAD QUANTITY OTHER THAN SPECIFIED, THE APPROVED METHODS MUST BE FOLLOWED, AS CLOSELY AS POSSIBLE.
- L. FOR TRAILERS NOT EQUIPPED WITH REAR CORNER POSTS, REAR BLOCKING MUST CONTACT CLOSED DOORS.
- M. OTHER TYPES OF LADING ITEMS MAY BE LOADED IN A TRAILER WHICH IS PARTIALLY LOADED WITH THE DESIGNATED ITEM, PROVIDING THE TOTAL LOAD IS COMPATIBLE, EXISTING DIRECTIVES ARE NOT VIOLATED, AND THE OTHER LADING ITEMS ARE BLOCKED AND BRACED TO EQUAL THE BLOCKING AND BRACING CRITERIA SPECIFIED HEREIN.
- N. EXCEPT FOR PLYWOOD, DUNNAGE LUMBER SPECIFIED THROUGHOUT THIS PROCEDURAL DRAWING IS OF NOMINAL SIZE. FOR EXAMPLE, 1" X 4" MATERIAL IS ACTUALLY 3/4" THICK BY 3-5/8" WIDE AND 2" X 6" MATERIAL IS ACTUALLY 1-5/8" THICK BY 5-5/8" WIDE.
- O. IT IS THE RESPONSIBILITY OF A SHIPPER TO PROVIDE THE "CONTAINER PROTECTOR" ASSEMBLY AS DETAILED ON PAGE 3. CAUTION: OUTLOADING MUST NOT BE ATTEMPTED WITHOUT USING A CONTAINER PROTECTOR BOARD.
- P. NOTICE: A STAGGERED NAILING PATTERN WILL BE USED WHEREVER POSSIBLE WHEN NAILS ARE DRIVEN INTO JOINTS OF DUNNAGE ASSEMBLIES. ALSO, A STAGGERED NAILING PATTERN WILL BE USED WHEN DUNNAGE IS NAILED TO THE FLOOR OF THE TRANSPORTING VEHICLE, OR WHEN LAMINATING DUNNAGE. ADDITIONALLY, A NAILING PATTERN FOR AN UPPER PIECE OF LAMINATED DUNNAGE WILL BE ADJUSTED AS REQUIRED SO THAT A NAIL FOR THAT PIECE WILL NOT BE DRIVEN THROUGH ONTO OR RIGHT BESIDE A NAIL IN A LOWER PIECE.
- R. PORTIONS OF THE TRAILER BODIES DEPICTED WITHIN THIS DOCUMENT, SUCH AS ONE OF THE SIDE WALLS, HAVE NOT BEEN SHOWN IN THE LOAD VIEWS FOR CLARITY PURPOSES.
- S. FOR ADDITIONAL GUIDANCE, ATTENTION IS DIRECTED TO THE "CONTAINER HANDLING INSTRUCTIONS" ON PAGE 3 AND TO THE "SPECIAL NOTES" SECTIONS WHICH ARE IMMEDIATELY ADJACENT TO THE OUTLOADING METHODS DELINEATED HEREIN.

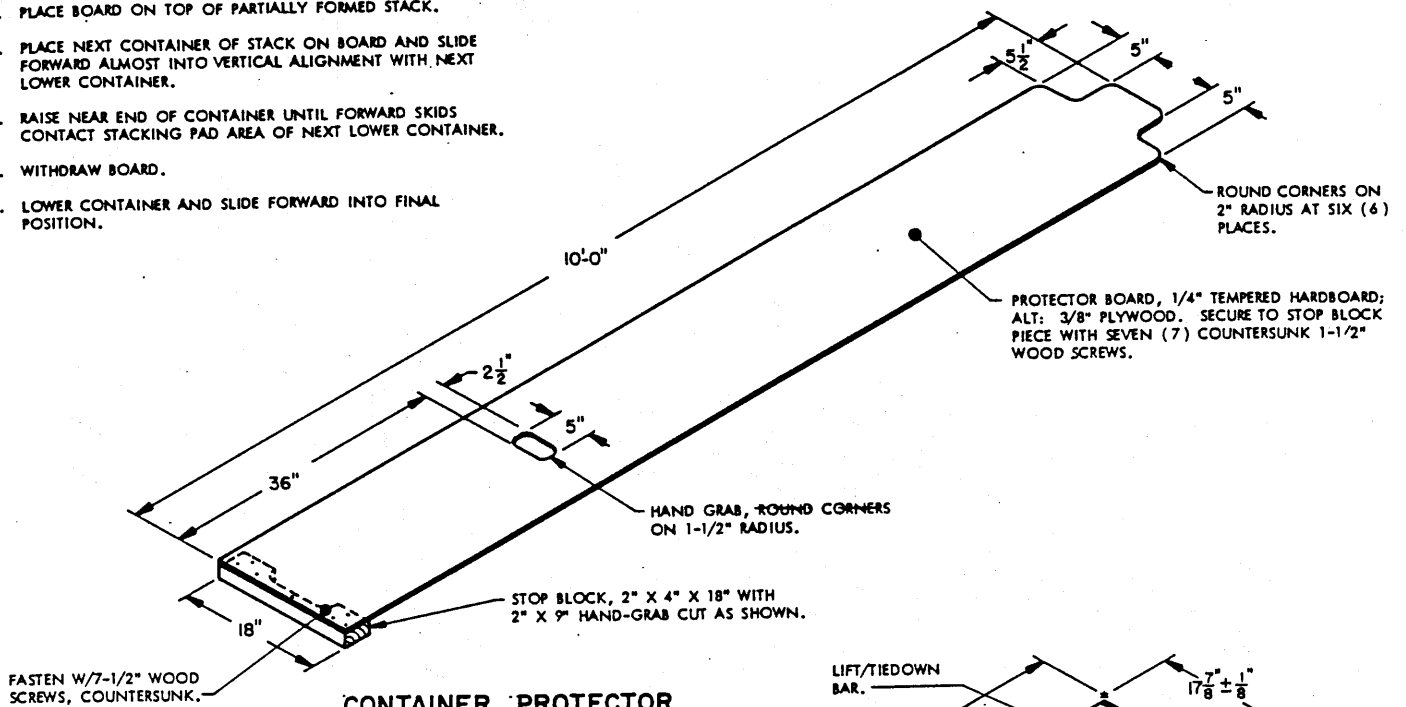
(CONTINUED AT RIGHT)

MATERIAL SPECIFICATIONS

- LUMBER ----- : SEE TM 743-200-1, DUNNAGE LUMBER; FED SPEC MM-L-751.
- PLYWOOD ----- : GROUP B OR C, GRADE * C-C (EXTERIOR); FED SPEC NN-P-530.
FSN 5530-051-1198.
- * IF SPECIFIED GRADE IS NOT AVAILABLE, A BETTER EXTERIOR GRADE MAY BE SUBSTITUTED.
- NAILS ----- : COMMON, CEMENT COATED OR CHEMICALLY ETCHED,
FED SPEC FF-N-105.
ALT: ANNULAR-RING TYPE NAIL OF THE SAME SIZE.
- WIRE ----- : ANNEALED, BLACK; FED SPEC QQ-W-461.
- STRAPPING, STEEL ----- : TYPE I OR IV, CLASS A OR B, FED SPEC QQ-S-781.
FOR FSN SEE 58-38-100.
- ANTI-CHAFING MATERIAL: NEUTRAL BARRIER MATERIAL, MIL-B-121 (OR EQUAL).
- HARDBOARD ----- : FED SPEC LLL-H-35.
- STRAP SEAL,
STRAP STAPLE ----- : COMMERCIAL GRADE.

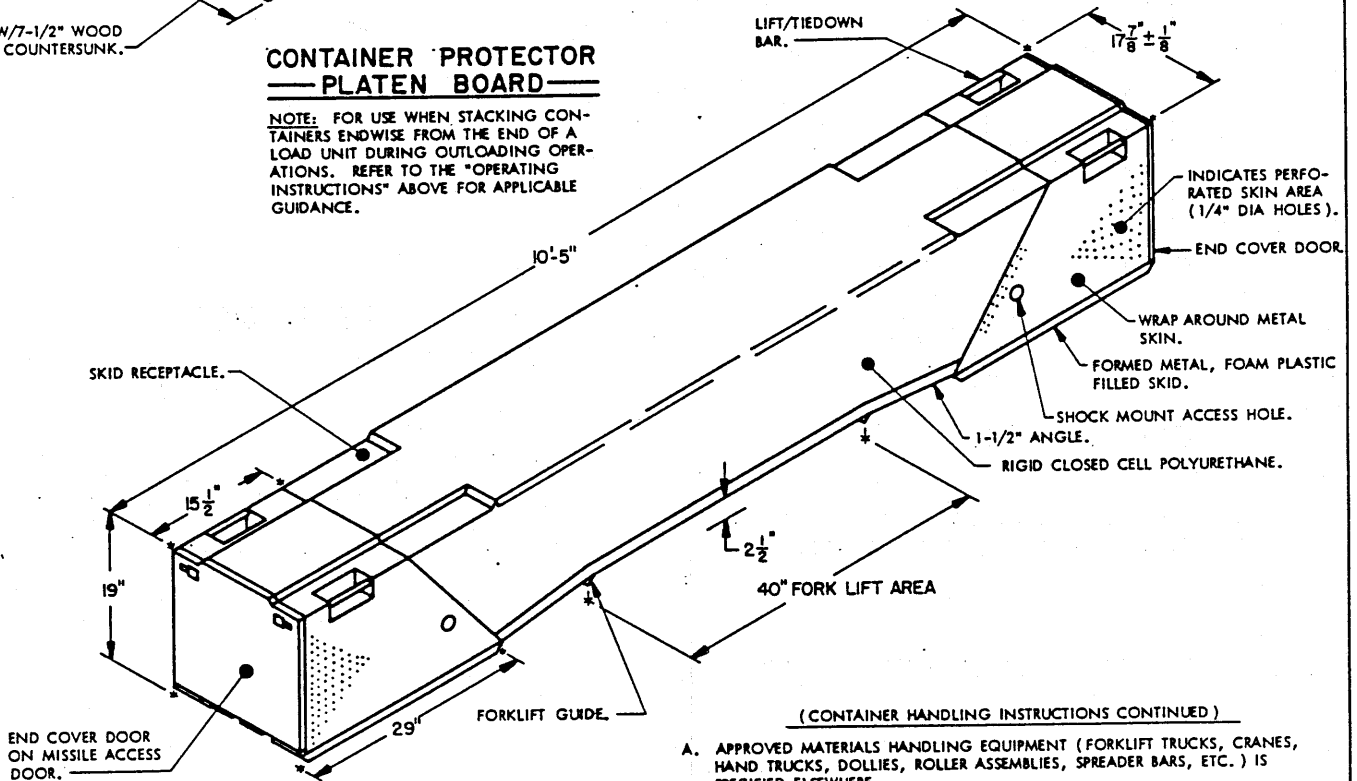
OPERATING INSTRUCTIONS

1. PLACE BOARD ON TOP OF PARTIALLY FORMED STACK.
2. PLACE NEXT CONTAINER OF STACK ON BOARD AND SLIDE FORWARD ALMOST INTO VERTICAL ALIGNMENT WITH NEXT LOWER CONTAINER.
3. RAISE NEAR END OF CONTAINER UNTIL FORWARD SKIDS CONTACT STACKING PAD AREA OF NEXT LOWER CONTAINER.
4. WITHDRAW BOARD.
5. LOWER CONTAINER AND SLIDE FORWARD INTO FINAL POSITION.



CONTAINER PROTECTOR — PLATEN BOARD —

NOTE: FOR USE WHEN STACKING CONTAINERS ENDWISE FROM THE END OF A LOAD UNIT DURING OUTLOADING OPERATIONS. REFER TO THE "OPERATING INSTRUCTIONS" ABOVE FOR APPLICABLE GUIDANCE.



CONTAINER DETAIL

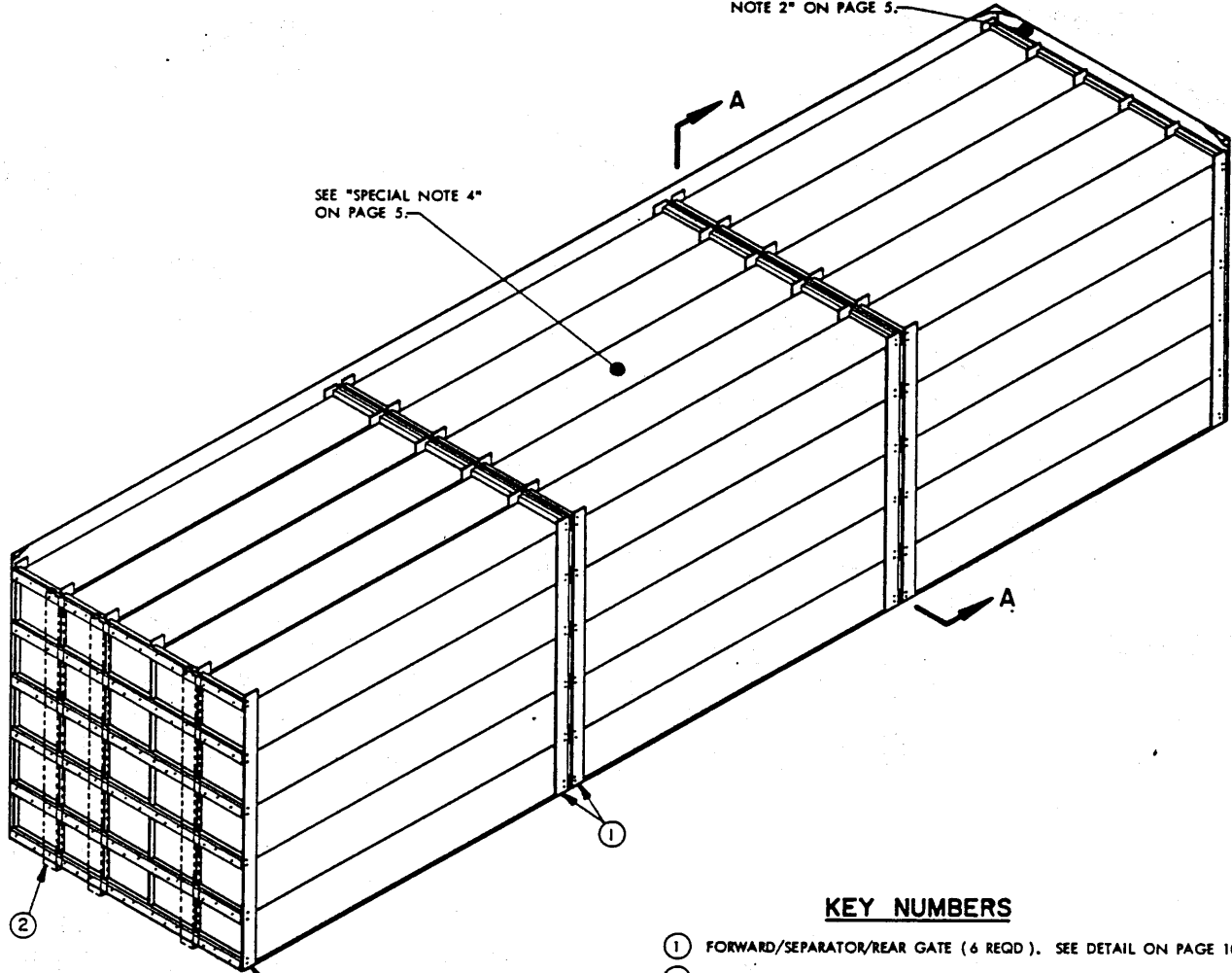
CONTAINER HANDLING INSTRUCTIONS

1. **CAUTION:** EXTREME CARE MUST BE EXERCISED DURING OUTLOADING OPERATIONS TO PREVENT DAMAGE TO THE EXPOSED PLASTIC AREAS OF THE CONTAINER. PLASTIC AREAS WILL NOT BE STEPPED ON, WALKED ON, PRIED AGAINST, STRUCK OR GOUGED WITH HAND TOOLS OR MATERIALS HANDLING EQUIPMENT, OR BUMPED AGAINST PROTRUSIONS.
2. IT IS RECOMMENDED THAT THE CONTAINERS BE MANUALLY STACKED WITHIN THE TRANSPORTING TRAILER. TO FACILITATE COMPLIANCE WITH THIS RECOMMENDATION, THE "CONTAINER PROTECTOR" BOARD AS SHOWN ABOVE MUST BE USED WHEN PLACING THE UPPER CONTAINERS OF A STACK AND WHEN FORMING THE LAST STACK BUILT WITHIN A LOAD UNIT.
3. ONLY APPROVED AND APPROPRIATELY SIZED MATERIALS HANDLING EQUIPMENT WILL BE USED FOR HANDLING THE DEPICTED CONTAINER.

(CONTAINER HANDLING INSTRUCTIONS CONTINUED)

- A. APPROVED MATERIALS HANDLING EQUIPMENT (FORKLIFT TRUCKS, CRANES, HAND TRUCKS, DOLLIES, ROLLER ASSEMBLIES, SPREADER BARS, ETC.) IS SPECIFIED ELSEWHERE.
- B. PRECAUTIONARY HANDLING TECHNIQUES NORMALLY EMPLOYED FOR THE TYPE OF COMMODITY INVOLVED OR AS SPECIFIED ELSEWHERE OR HEREIN WILL BE OBSERVED.
- C. IF HANDLING IS ACCOMPLISHED WITH A FORKLIFT TRUCK, CONTAINERS SHOULD BE HANDLED FROM A SIDE POSITION. **CAUTION:** THE USUALLY APPLIED END-HANDLING IS NOT PERMITTED; HOWEVER, FORK TINES MAY BE PLACED UNDER THE SKIDS FROM AN END DIRECTION. CARE MUST BE EXERCISED WHEN INSERTING FORKS UNDER OR WITHDRAWING FORKS FROM UNDER A CONTAINER, TO PREVENT DAMAGE TO THE CONTAINERS BY THE FORK TINES OR THE FORKLIFT PACKAGE GUARD.
- D. IF A SINGLE CONTAINER IS HANDLED BY SLINGING, THE SLING MAY BE ATTACHED TO THE LIFTING POINTS ON THE CONTAINER. HOWEVER, IF A STACK OF TWO OR MORE CONTAINERS IS HANDLED BY SLINGING, THE SLING USED MUST BE OF SUCH A DESIGN THAT LIFTING IS DONE ON THE BOTTOM OF THE LOWEST CONTAINER, AND ADDITIONALLY, CONTAIN BOTH LENGTHWISE AND CROSSWISE SPREADER BARS WHICH ARE RIGGED SO AS TO PREVENT DAMAGE TO A CONTAINER BY THE SLING LEGS.

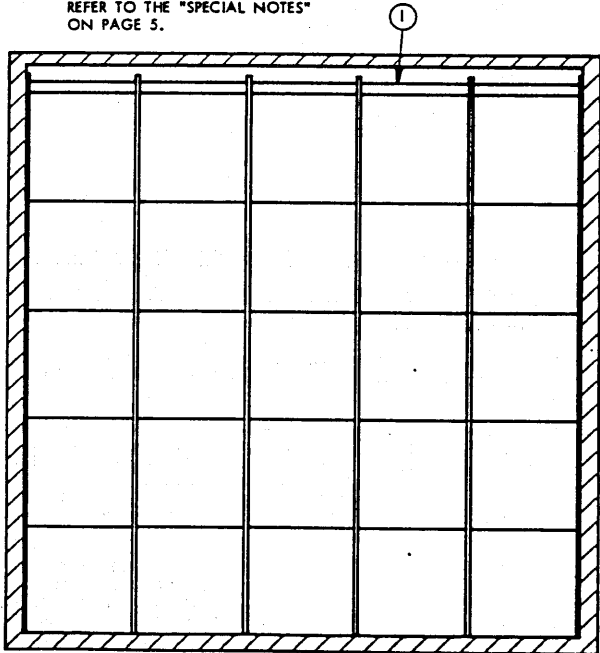
IF THE TRAILER BEING LOADED HAS A ROUND FRONT OR ROUNDED CORNERS AT THE FORWARD END SEE "SPECIAL NOTE 2" ON PAGE 5.



SEE "SPECIAL NOTE 4" ON PAGE 5.

ISOMETRIC VIEW

REFER TO THE "SPECIAL NOTES" ON PAGE 5.

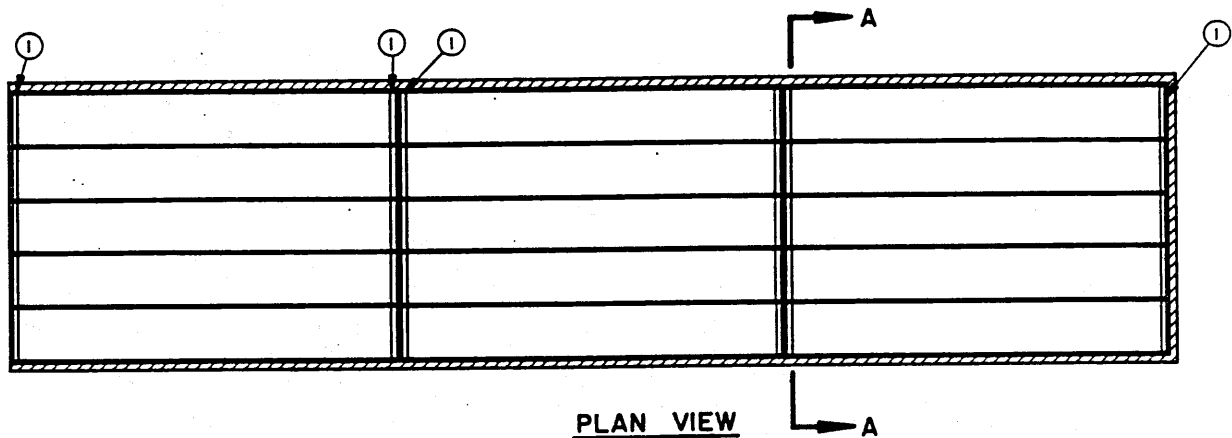


KEY NUMBERS

- ① FORWARD/SEPARATOR/REAR GATE (6 REQD). SEE DETAIL ON PAGE 10.
- ② SOLID FILL, 6" WIDE BY 8'-0" LONG MATERIAL OF THE REQUIRED THICKNESS, AT THREE PLACES, TO FILL THE VOID BETWEEN THE REAR GATE AND THE TRAILER DOORS. ONLY REQUIRED FOR A LOAD WHERE A VOID SPACE OF ELEVEN INCHES (11") OR LESS EXISTS BETWEEN THE MOST REARWARD GATE AND THE INSIDE SURFACE OF THE REAR DOORS ON THE TRAILER WHEN THE DOORS ARE CLOSED. POSITION AS SHOWN WITH THE WIDTH OF A PIECE CENTERED ON A JOINT BETWEEN TWO LATERALLY ADJACENT CONTAINER STACKS. NAIL TO THE REAR GATE MARKED ① OR LAMINATE IF REQUIRED W/6 NAILS WHICH ARE SIZED TO THE FILL MATERIAL BEING INSTALLED. USE 6d NAILS FOR 1" MATERIAL AND 10d NAILS FOR 2" MATERIAL.
NOTE: IF THE VOID SPACE BETWEEN THE REAR GATE AND THE TRAILER DOORS IS GREATER THAN ELEVEN INCHES (11"), REAR BLOCKING AS DELINEATED BY THE "GATES-AND-STRUTS REAR BLOCKING" DETAIL ON PAGE 10 WILL BE USED IN LIEU OF THE SPECIFIED "SOLID FILL" TYPE BLOCKING.

SECTION A-A

75-UNIT LOAD IN A 33'-0" LONG, HIGH-VOLUME VAN TRAILER



PLAN VIEW

SPECIAL NOTES

1. A 33'-0" LONG TRAILER IS SHOWN WHICH IS 7'-9" WIDE BY 8'-4" HIGH (INSIDE DIMENSIONS), IS EQUIPPED WITH A SQUARE FRONT AND DOES NOT HAVE REAR CORNER POSTS. THE DEPICTED LOAD CAN BE SHIPPED IN A TRAILER WHICH IS LONGER THAN SHOWN.
2. A SQUARE FRONT TRAILER IS SHOWN IN THE LOAD VIEWS. IF THE TRAILER TO BE USED HAS ROUNDED CORNERS AT THE FORWARD END, THE MINIMUM LENGTH TRAILER THAT CAN BE USED IS 34'-0"; OR IF THE TRAILER HAS A ROUND FRONT, THE MINIMUM LENGTH TRAILER THAT CAN BE USED IS 36'-0". IF THE TRAILER HAS EITHER, A ROUND FRONT OR ROUNDED CORNERS AT THE FORWARD END, REFER TO PAGE 13 FOR "FORWARD BLOCKING" SPECIFICATIONS WHICH MUST BE USED.
3. IF THE TRAILER BEING LOADED IS EQUIPPED WITH REAR CORNER POSTS AND IS NOT AT LEAST 35'-0" LONG, THE 1" X 4" HORIZONTAL PIECES ON THE MOST REARWARD GATE IN THE LOAD CANNOT BE NAILED IN PLACE UNTIL AFTER THE "SEPARATOR ASSEMBLIES" OF THE GATE HAVE BEEN PLACED IN POSITION.
4. IF THE DELINEATED OUTLOADING METHOD IS USED FOR SHIPMENT OF A LOAD WHICH CONTAINS A LOAD UNIT OF TWENTY-FOUR (24) CONTAINERS INSTEAD OF THE TWENTY-FIVE (25) CONTAINERS AS SHOWN, TO SATISFY A LESS-THAN-FULL-LOAD QUANTITY, THE FOUR-HIGH CONTAINER STACK MUST CONTAIN A "FILLER ASSEMBLY" AS DEPICTED ON PAGE 14, IN PLACE OF EACH OMITTED CONTAINER. ALSO, FOR EACH OMITTED CONTAINER, TWO "FILLER BLOCKS", 2" X 4" X 18", MUST BE USED BETWEEN THE "SEPARATOR ASSEMBLIES" OF THE GATES. NAIL TO THE "SPACER PIECE" OF THE GATES W/3-10d NAILS. THIS WILL PROVIDE SIDE BEARING FOR THE CONTAINER (S) LATERALLY ADJACENT TO THE "FILLER ASSEMBLY".

BILL OF MATERIAL

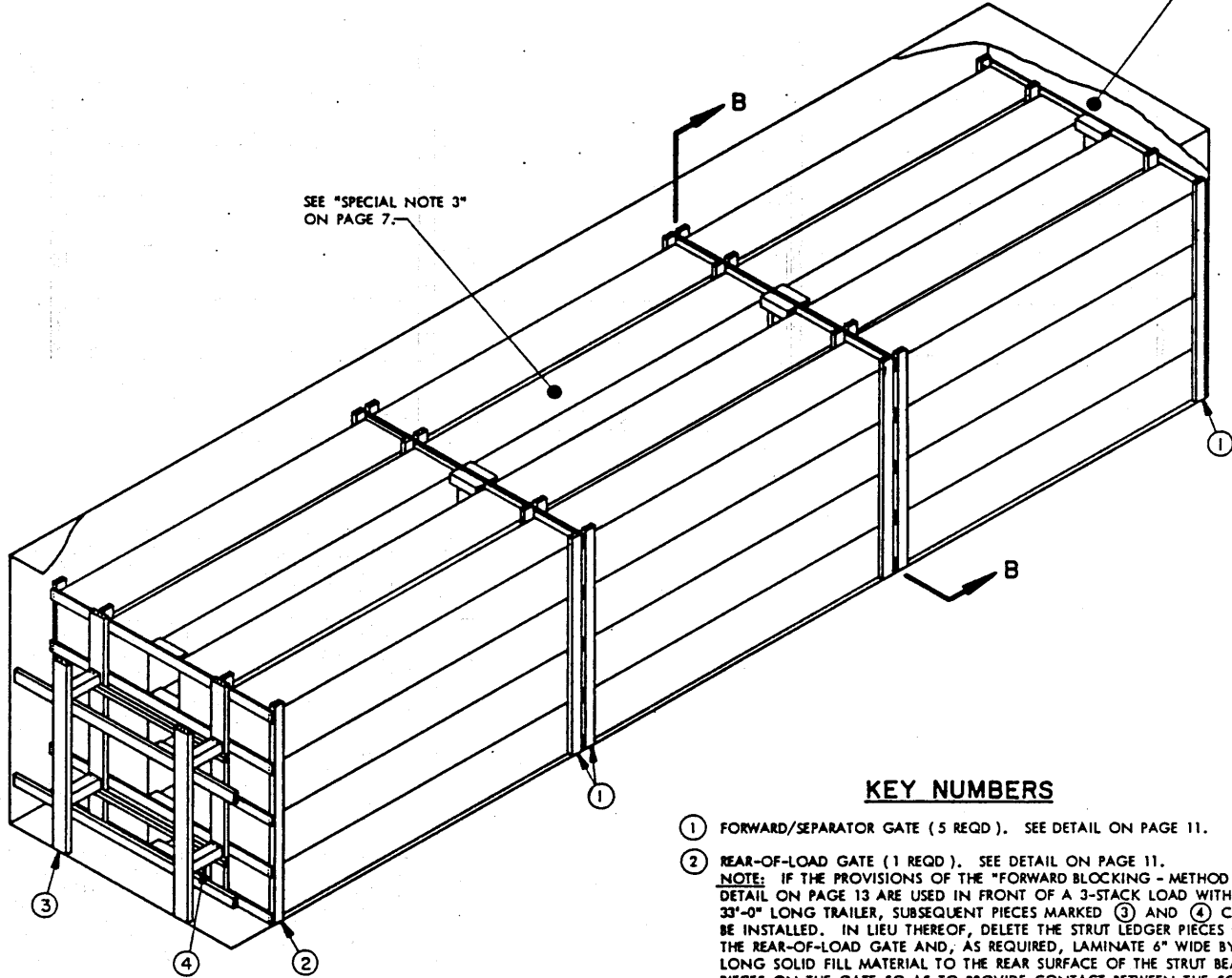
LUMBER	LINEAR FEET	BOARD FEET
1" X 4"	278	93
2" X 4"	270	180
NAILS	NO. REQD	POUNDS
6d (2")	972	5-3/4
PLYWOOD, 1/4" X 4" X 8'-0"	12 REQD	23 LBS
PLYWOOD, 1/2" X 4" X 8'-0"	24 REQD*	92 LBS

*IF 1/2" PLYWOOD IS NOT AVAILABLE, SUBSTITUTE DOUBLED THICKNESS OF 1/4" PLYWOOD.

LOAD AS SHOWN

ITEM	QUANTITY	WEIGHT (APPROX)
CONTAINER W/MISSILE	75	21,000 LBS
DUNNAGE		804 LBS
TOTAL WEIGHT		21,804 LBS

IF THE TRAILER BEING LOADED HAS A ROUND FRONT OR ROUNDED CORNERS AT THE FORWARD END SEE "SPECIAL NOTE 2" ON PAGE 7.



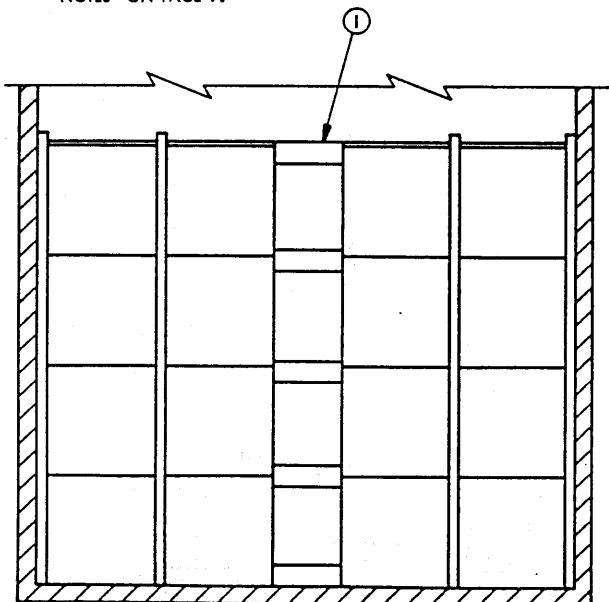
SEE "SPECIAL NOTE 3" ON PAGE 7.

ISOMETRIC VIEW

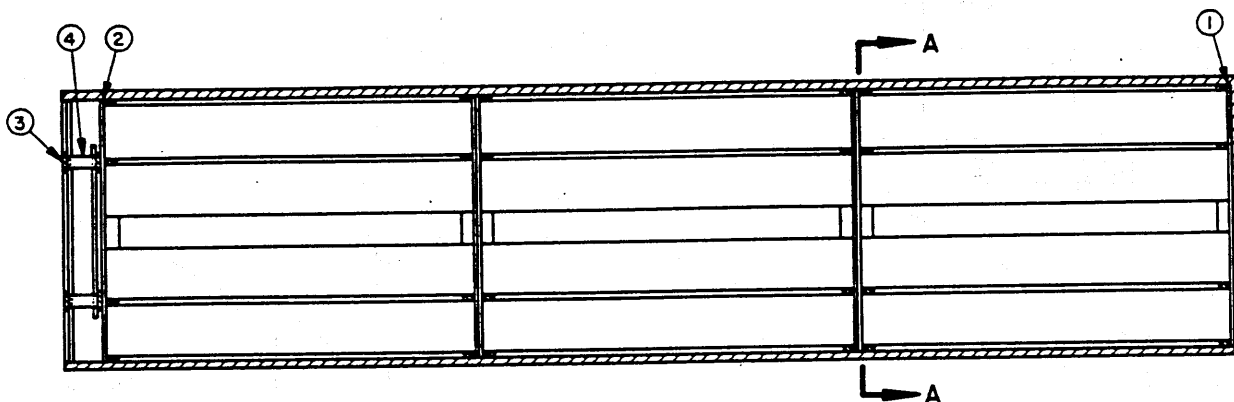
REFER TO THE "SPECIAL NOTES" ON PAGE 7.

KEY NUMBERS

- ① FORWARD/SEPARATOR GATE (5 REQD). SEE DETAIL ON PAGE 11.
- ② REAR-OF-LOAD GATE (1 REQD). SEE DETAIL ON PAGE 11.
NOTE: IF THE PROVISIONS OF THE "FORWARD BLOCKING - METHOD A" DETAIL ON PAGE 13 ARE USED IN FRONT OF A 3-STACK LOAD WITHIN A 33'-0" LONG TRAILER, SUBSEQUENT PIECES MARKED ③ AND ④ CANNOT BE INSTALLED. IN LIEU THEREOF, DELETE THE STRUT LEDGER PIECES FROM THE REAR-OF-LOAD GATE AND, AS REQUIRED, LAMINATE 6" WIDE BY 6'-6" LONG SOLID FILL MATERIAL TO THE REAR SURFACE OF THE STRUT BEARING PIECES ON THE GATE SO AS TO PROVIDE CONTACT BETWEEN THE SOLID FILL MATERIAL AND THE REAR DOORS OF THE TRAILER WHEN THE DOORS ARE CLOSED.
CAUTION: USE LAMINATING NAILS OF A SIZE TO SUIT; NAIL POINTS MUST NOT PROTRUDE.
- ③ REAR GATE (1 REQD). SEE DETAIL ON PAGE 12. POSITION THE GATE SO THAT THE REAR SURFACE OF THE STRUT BEARING PIECES WILL BE IN CLOSE CONTACT WITH THE REAR DOORS OF THE TRAILER WHEN THE DOORS ARE CLOSED.
NOTE: IN SOME TRAILERS WHICH ARE EQUIPPED WITH CORNER POSTS, IT WILL BE NECESSARY TO CUT A SMALL AMOUNT FROM EACH END OF THE STRUT LEDGER PIECES TO PROVIDE FOR A PROPER FIT OF THE LEDGER PIECES CROSSWISE BETWEEN THE REAR CORNER POSTS. THE TYPE AND SIZE OF REAR POST WILL AFFECT THIS REQUIREMENT.
- ④ STRUT, 4" X 4" BY CUT TO FIT (4 REQD). TOENAIL TO GATE STRUT BEARING PIECES W/2-12d NAILS AT EACH END. IF STRUTS ARE 7'-0" LONG OR GREATER IN LENGTH, INSTALL STRUT BRACING AS SPECIFIED WITHIN THE "GATES-AND-STRUTS REAR BLOCKING" DETAIL ON PAGE 8. SEE "SPECIAL NOTE 4" ON PAGE 7.



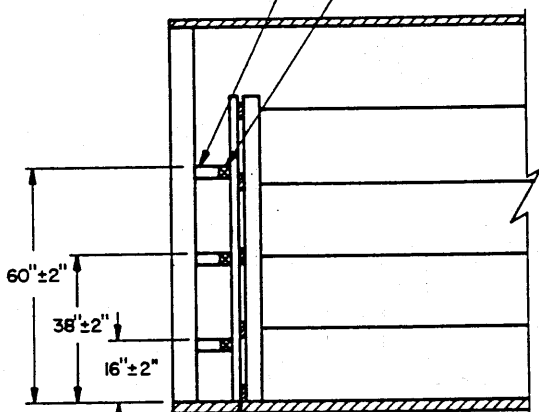
SECTION B-B



PLAN VIEW

INDICATES BELT RAIL OF MECHANICAL LOAD BLOCKING SYSTEM.

INDICATES LOAD BLOCKING CROSS MEMBER OF MECHANICAL LOAD BLOCKING SYSTEM (3 REQD).



INDICATES REAR-OF-LOAD GATE WITH STRUT LEDGER PIECE REMOVED.

SPECIAL PARTIAL ELEVATION

SEE "SPECIAL NOTE 4".

SPECIAL NOTES

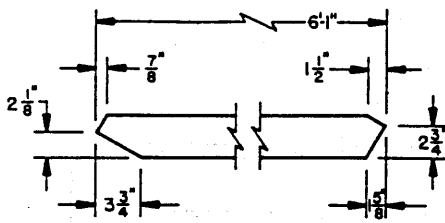
1. A 33'-0" LONG TRAILER IS SHOWN WHICH IS 7'-6" WIDE BY 7'-6" HIGH (INSIDE DIMENSIONS) AND WHICH DOES NOT HAVE REAR CORNER POSTS NOR A ROUND FRONT OR ROUNDED CORNERS AT THE FORWARD END. THE DEPICTED LOAD CAN BE SHIPPED IN A TRAILER WHICH IS WIDER, NARROWER OR LONGER.
2. A SQUARE FRONT TRAILER IS SHOWN IN THE LOAD VIEWS. IF THE TRAILER TO BE USED HAS ROUNDED CORNERS AT THE FORWARD END, THE MINIMUM LENGTH TRAILER THAT CAN BE USED IS 33'-0"; OR IF THE TRAILER HAS A ROUND FRONT, THE MINIMUM LENGTH TRAILER THAT CAN BE USED IS 35'-0". IF THE TRAILER HAS EITHER, A ROUND FRONT OR ROUNDED CORNERS AT THE FORWARD END, REFER TO PAGE 13 FOR "FORWARD BLOCKING" SPECIFICATIONS WHICH MUST BE USED.
3. IF THE DELINEATED OUTLOADING METHOD IS USED FOR A SHIPMENT OF A LOAD WHICH CONTAINS A LOAD UNIT OF FIFTEEN (15) CONTAINERS INSTEAD OF THE SIXTEEN (16) CONTAINERS AS SHOWN, TO SATISFY A LESS-THAN-FULL-LOAD QUANTITY, THE THREE HIGH CONTAINER STACK MUST CONTAIN A "FILLER ASSEMBLY" AS DEPICTED ON PAGE 14, IN PLACE OF EACH OMITTED CONTAINER. ALSO FOR EACH OMITTED CONTAINER, TWO "FILLER BLOCKS", 2" X 4" X 18", MUST BE USED BETWEEN THE SPACER BLOCK AND A VERTICAL SEPARATOR PIECE OR BETWEEN TWO VERTICAL SEPARATOR PIECES OF THE GATE. NAIL THROUGH GATE LATERAL PIECE INTO THE "FILLER BLOCK" W/3-6d NAILS. THIS WILL PROVIDE SIDE BEARING FOR THE CONTAINER (S) LATERALLY ADJACENT TO THE "FILLER ASSEMBLY".
4. IF THE TRAILER BEING OUTLOADED CONTAINS MECHANICAL BRACING DEVICES, SUCH AS A WALL BELT RAIL AND LOAD BLOCKING CROSS MEMBERS, WHICH CONFORMS TO SPECIFICATIONS SET FORTH WITHIN THE BUREAU OF EXPLOSIVES PAMPHLET 6C AND THE APPENDICES THERETO, THEY MAY BE USED AT THE REAR OF THE REAR-OF-LOAD GATE IN LIEU OF THE REAR GATE, STRUTS OR SOLID FILL. DELETE THE STRUT LEDGER PIECES AND POSITION CROSS MEMBERS TIGHTLY AGAINST VERTICAL 2" X 6" S OF THE REAR-OF-LOAD GATE. SEE "SPECIAL PARTIAL ELEVATION" VIEW FOR CROSS MEMBER LOCATION AND NUMBER REQUIRED. THE TRAILER EQUIPPED WITH MECHANICAL BRACING DEVICES MUST HAVE A SYSTEM LENGTH OF AT LEAST 31'-8" AS MEASURED FROM THE FRONT WALL OF THE TRAILER. TRAILERS HAVING A SHORTER MECHANICAL SYSTEM WILL BE LIMITED TO A LOAD OF NOT MORE THAN 32 CONTAINERS. IF THE TRAILER HAS ROUNDED CORNERS AT THE FORWARD END, POSITION THREE (3) CROSS MEMBERS AT THE FRONT OF THE TRAILER AT HEIGHTS SPECIFIED IN THE "SPECIAL PARTIAL ELEVATION" VIEW. DELETE THE FORWARD GATE AND REPLACE WITH AN ADDITIONAL REAR-OF-LOAD GATE (MINUS STRUT LEDGERS) AGAINST THE CROSS MEMBERS. ALSO, THIS TRAILER MUST HAVE A SYSTEM LENGTH OF AT LEAST 31'-11".

BILL OF MATERIAL

LUMBER	LINEAR FEET	BOARD FEET
1" X 4"	225	75
2" X 2"	10	4
2" X 4"	172	115
2" X 6"	25	25
4" X 4"	34	46
NAILS	NO. REQD	POUNDS
6d (2")	430	2-1/2
10d (3")	20	1/2
12d (3-1/4")	16	NIL

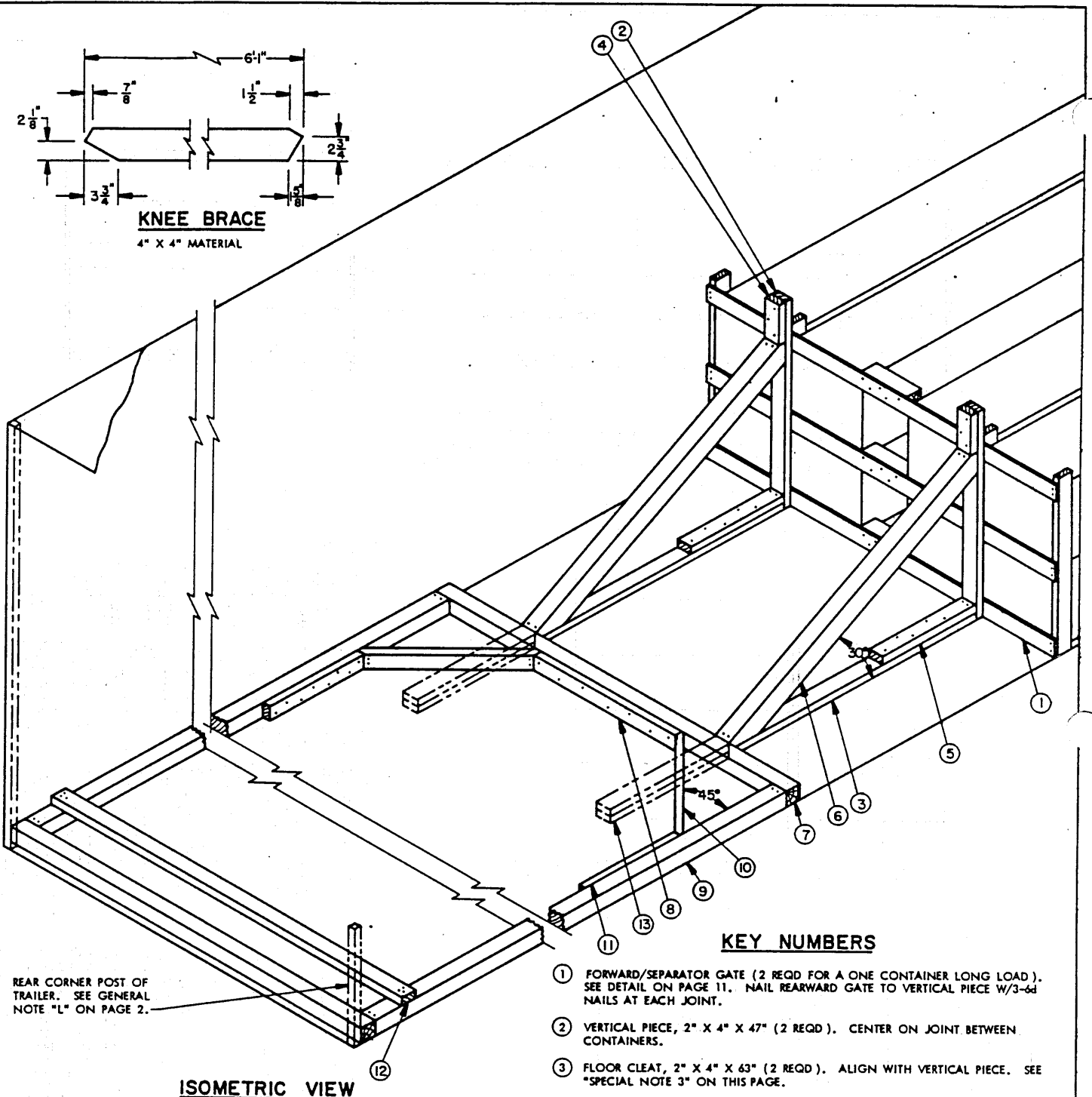
LOAD AS SHOWN

ITEM	QUANTITY	WEIGHT (APPROX)
CONTAINER		
W/MISSILE	48	13,440 LBS
DUNNAGE		665 LBS
TOTAL WEIGHT		14,105 LBS



KNEE BRACE

4" X 4" MATERIAL



ISOMETRIC VIEW

REAR CORNER POST OF TRAILER. SEE GENERAL NOTE "L" ON PAGE 2.

KEY NUMBERS

- ① FORWARD/SEPARATOR GATE (2 REQD FOR A ONE CONTAINER LONG LOAD). SEE DETAIL ON PAGE 11. NAIL REARWARD GATE TO VERTICAL PIECE W/3-6d NAILS AT EACH JOINT.
- ② VERTICAL PIECE, 2" X 4" X 47" (2 REQD). CENTER ON JOINT BETWEEN CONTAINERS.
- ③ FLOOR CLEAT, 2" X 4" X 63" (2 REQD). ALIGN WITH VERTICAL PIECE. SEE "SPECIAL NOTE 3" ON THIS PAGE.
- ④ HOLD DOWN PIECE, 2" X 4" X 9" (2 REQD). NAIL TO VERTICAL PIECE W/3-10d NAILS.
- ⑤ POCKET CLEAT, 2" X 4" X 24" (2 REQD). NAIL TO FLOOR CLEAT W/5-12d NAILS AND TOENAIL TO VERTICAL PIECE W/2-12d NAILS. SEE GENERAL NOTE "P" ON PAGE 2.
- ⑥ KNEE BRACE, 4" X 4" X 6'-1" (2 REQD). SEE DETAIL FOR BEVEL CUTS REQUIRED. INSTALL AT 30° ANGLE AND NAIL TO VERTICAL PIECE AND FLOOR CLEAT W/2-16d NAILS AT EACH END.
- ⑦ HEADER, 4" X 4" BY TRAILER WIDTH MINUS 1/2" (2 REQD).
- ⑧ CENTER CLEAT, 2" X 4" X 36" (1 REQD). NAIL TO HEADER W/7-12d NAILS.
- ⑨ SIDE STRUT, 4" X 4" BY CUT TO FIT (2 REQD). TOENAIL TO HEADER W/2-16d NAILS AT EACH END.
- ⑩ DIAGONAL BRACE, 2" X 4" BY CUT TO FIT (2 REQD). DOUBLE BEVEL EACH END WITH 45° CUTS. INSTALL AT A 45° ANGLE AS SHOWN AND TOENAIL TO A HEADER AND A SIDE STRUT W/2-16d NAILS AT EACH JOINT.
- ⑪ BACK-UP CLEAT, 2" X 4" X 24" (2 REQD). NAIL TO A SIDE STRUT W/8-12d NAILS.

(KEY NUMBERS CONTINUED AT TOP OF PAGE 9)

SPECIAL NOTES

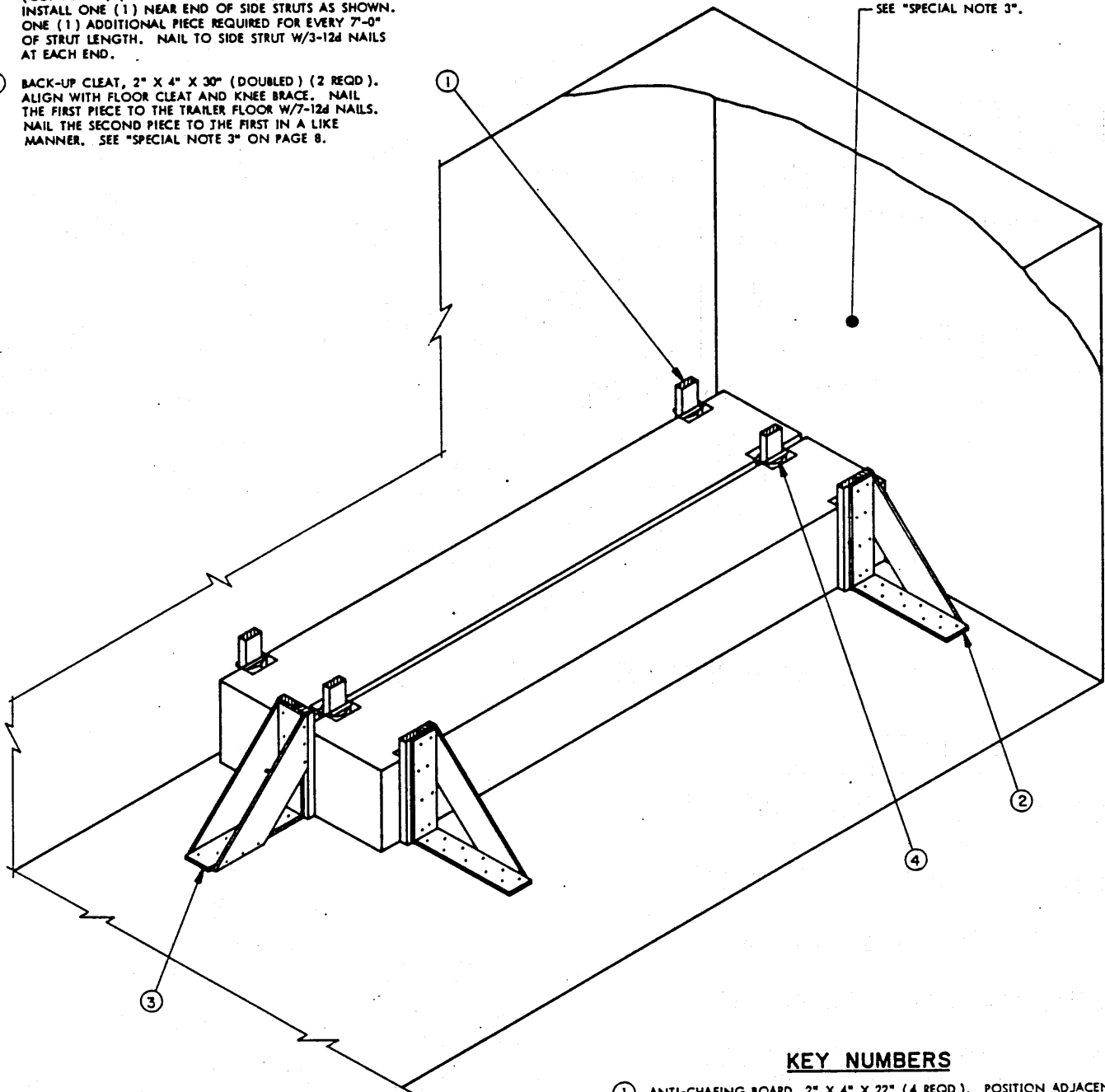
- 1. THESE OUTLOADING PROCEDURES ARE SHOWN DEPICTING THE USE OF "KNEE BRACE" BLOCKING IN A 7'-6" WIDE (INSIDE DIMENSION) TRAILER. NARROWER OR WIDER TRAILERS CAN BE USED.
- 2. THE "K-BRACE" BLOCKING AS SHOWN AS PIECES MARKED ⑦ THROUGH ⑫, IS ADEQUATE FOR RETAINING NOT MORE THAN 18,000 POUNDS OF LADING.
- 3. PIECES MARKED ⑬ ARE FOR USE IN TRAILERS WHICH HAVE NAILABLE FLOORS, AND SHOULD BE USED IF POSSIBLE IN LIEU OF PIECES MARKED ⑦ THROUGH ⑫ WHICH APPLY TO TRAILERS HAVING NON-NAILABLE FLOORS. WHEN USING NAILABLE FLOOR LINE DUNNAGE, NAIL THE FLOOR CLEAT, PIECE MARKED ③, TO THE TRAILER FLOOR W/1-12d NAIL EVERY 6". TWO (2) BACK-UP CLEATS, SHOWN AS PIECES MARKED ⑪, ARE ADEQUATE FOR RETAINING NOT MORE THAN 7,800 POUNDS OF LADING.

(KEY NUMBERS CONTINUED FROM PAGE 9)

⑫ STRUT BRACING, 2" X 4" BY TRAILER WIDTH (CUT TO FIT) (MINIMUM OF ONE (1) REQUIRED). INSTALL ONE (1) NEAR END OF SIDE STRUTS AS SHOWN. ONE (1) ADDITIONAL PIECE REQUIRED FOR EVERY 7'-0" OF STRUT LENGTH. NAIL TO SIDE STRUT W/3-12d NAILS AT EACH END.

⑬ BACK-UP CLEAT, 2" X 4" X 30" (DOUBLED) (2 REQD). ALIGN WITH FLOOR CLEAT AND KNEE BRACE. NAIL THE FIRST PIECE TO THE TRAILER FLOOR W/7-12d NAILS. NAIL THE SECOND PIECE TO THE FIRST IN A LIKE MANNER. SEE "SPECIAL NOTE 3" ON PAGE 8.

SEE "SPECIAL NOTE 3".



ISOMETRIC VIEW
FOR TRAILERS WITH NAIL-ABLE FLOORS.

KEY NUMBERS

- ① ANTI-CHAFING BOARD, 2" X 4" X 22" (4 REQD). POSITION ADJACENT TO A LIFT/TIEDOWN BAR AND SECURE TO CONTAINER WITH TIE WIRE.
- ② LTL BRACE, FOR SIDE BLOCKING (2 REQD). SEE DETAIL ON PAGE 12. POSITION AGAINST THE METAL PART OF CONTAINER AND NAIL TO THE TRAILER FLOOR W/10-6d NAILS.
- ③ LTL BRACE, FOR END BLOCKING (1 REQD). SEE DETAIL ON PAGE 12. POSITION ON THE JOINT OF THE CONTAINERS AND NAIL TO THE TRAILER FLOOR W/10-6d NAILS.
- ④ TIE WIRE, NO. 8 GAGE BLACK ANNEALED WIRE 15" LONG (4 REQD). SECURE AROUND LIFT/TIEDOWN BAR AND ANTI-CHAFING BOARD, BRING THE ENDS TOGETHER AND TWIST TAUT. IF NO. 8 GAGE BLACK ANNEALED WIRE IS NOT AVAILABLE, A NO. 14 GAGE BLACK ANNEALED WIRE 30" CAN BE SUBSTITUTED.

SPECIAL NOTES

- 1. THE LOAD SHOWN DEPICTS THE METHOD FOR OUTLOADING A TWO CONTAINER LTL LOAD IN A TRAILER EQUIPPED WITH A NAILABLE FLOOR. THE LTL BRACE CAN ONLY BE USED TO SHIP A ONE CONTAINER HIGH LOAD. SEE "NOTE ■" ON PAGE 12.
- 2. THIS OUTLOADING PROCEDURE IS ALSO APPLICABLE FOR A LTL LOAD OF THREE CONTAINERS. WHEN SHIPPING THREE CONTAINERS AN ADDITIONAL LTL BRACE, FOR END BLOCKING, TWO ANTI-CHAFING BOARDS AND TWO TIE WIRES WILL BE REQUIRED.
- 3. IF DESIRED, AN LTL BRACE MAY BE POSITIONED AT THE FORWARD END OF THE LADING TO SATISFY A LOAD DISTRIBUTION REQUIREMENT OR FOR TRAILERS EQUIPPED WITH ROUNDED CORNERS OR A ROUND-FRONT AT THE FORWARD END.

NOTES:

A GATE/STRUT TYPE OF REAR BLOCKING AS SHOWN BELOW WILL BE USED WITHIN A HIGH-VOLUME VAN TRAILER LOAD WHEN THE UNOCCUPIED SPACE BETWEEN THE MOST REARWARD GATE AND THE INSIDE SURFACE OF THE TRAILER DOORS MEASURES ELEVEN INCHES (11") OR MORE.

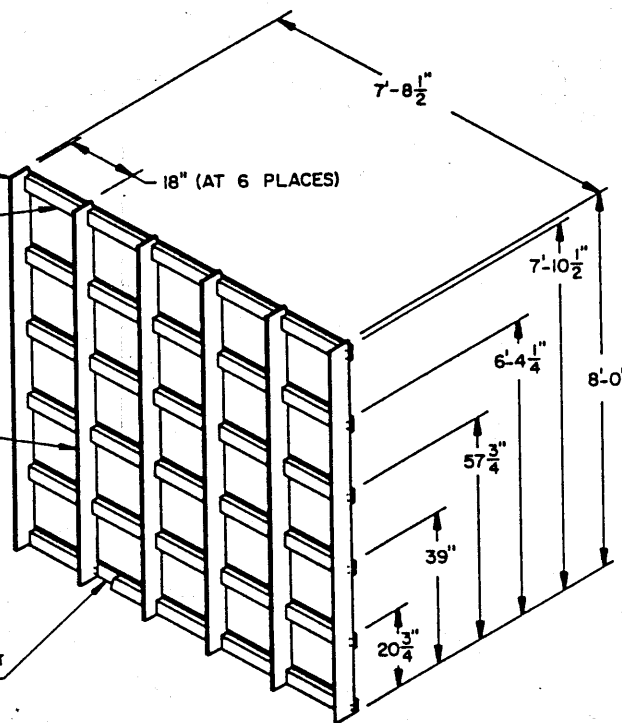
THE BLOCKING ASSEMBLY AS SHOWN IS DESIGNED FOR USE WITH A 5-LAYER LOAD. FOR A REDUCED HEIGHT LOAD, CONSTRUCT THE REAR BLOCKING TO SUIT, FOLLOWING THE DELINEATED PRINCIPLES. FOR A 3-LAYER OR 4-LAYER LOAD, THE STRUTS SHOULD ALIGN ON THE JOINTS BETWEEN THE FIRST AND SECOND LAYERS AND BETWEEN THE TOP AND THE NEXT-TO-TOP LAYERS. FOR A 2-LAYER LOAD, THE TWO UPPER LEVEL STRUTS SHOULD ALIGN ON THE JOINT BETWEEN LAYERS AND THE TWO LOWER LEVEL STRUTS WILL BE PLACED ON THE FLOOR OF THE TRAILER, WITHOUT STRUT LEDGERS, BUT WITH AN ADDITIONAL 2" X 4" BY TRAILER WIDTH PIECE PLACED ON EDGE ON TOP OF THE STRUTS AT THE REARWARD END AND NAILED TO THE VERTICAL PIECES OF THE REAR GATE. REGARDLESS OF THE HEIGHT OF THE FORWARD GATE, THE TWO TOP/BOTTOM HORIZONTAL PIECES OF 2" X 6" X 7'-8-1/2" MATERIAL MUST ALWAYS BE USED, AND PLACED SO AS TO PROVIDE BEARING BEHIND THE FORWARD ENDS OF THE STRUTS; THE USE OF AND THE NUMBER OF INTERMEDIATE HORIZONTAL PIECES WILL DEPEND ON THE HEIGHT OF THE LOAD BEING BLOCKED.

SIDE PIECE, 1/4" X 4" X 8'-0" PLYWOOD STRIP (2 REQD). NAIL TO EACH OF THE ADJACENT SPACER PIECES W/2-6d NAILS.

SPACER PIECE, 2" X 4" X 18" (30 REQD).

INTERMEDIATE PIECE, 1/2" X 4" X 8'-0" PLYWOOD STRIP (4 REQD). NAIL TO EACH OF THE SPACER PIECES WHICH ARE ADJACENT TO ONE SIDE W/2-6d NAILS.

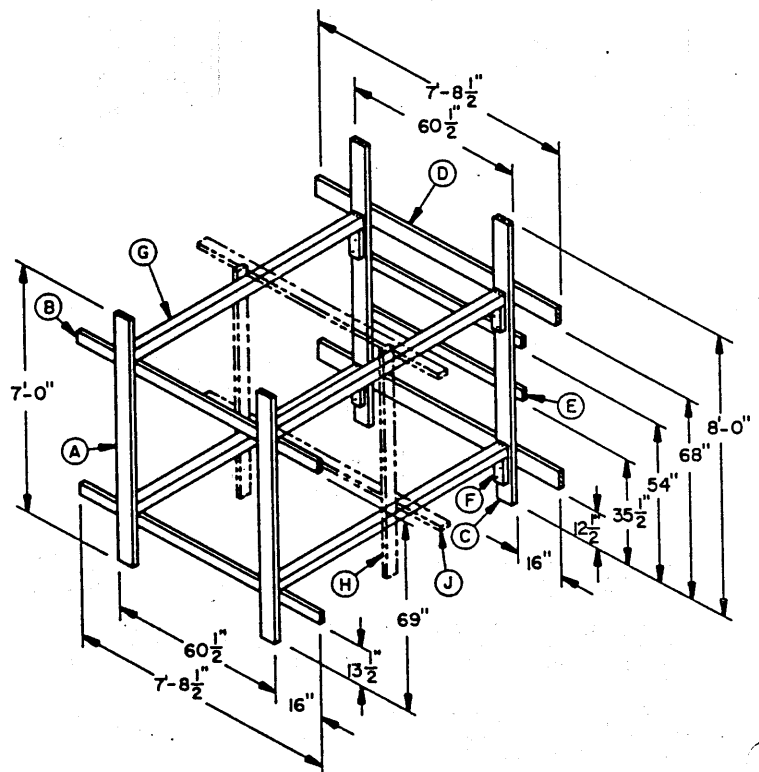
LATERAL PIECE, 1" X 4" X 7'-8-1/2" (6 REQD). NAIL TO EACH OF THE ADJACENT SPACER PIECES W/3-6d NAILS.



FORWARD/SEPARATOR/REAR GATE

KEY LETTERS

- (A) REAR GATE VERTICAL, 2" X 6" X 7'-0" (2 REQD).
- (B) REAR GATE STRUT LEDGER, 2" X 4" X 7'-8-1/2" (2 REQD). NAIL TO PIECES MARKED (A) W/3-10d NAILS AT EACH JOINT.
- (C) FORWARD GATE VERTICAL, 2" X 6" X 8'-0" (2 REQD).
- (D) FORWARD GATE TOP/BOTTOM HORIZONTAL, 2" X 6" X 7'-8-1/2" (2 REQD). NAIL TO PIECES MARKED (C) W/3-10d NAILS AT EACH JOINT.
- (E) FORWARD GATE INTERMEDIATE HORIZONTAL, 2" X 4" X 66" (2 REQD). NAIL TO PIECES MARKED (C) W/3-10d NAILS AT EACH END.
- (F) STRUT LEDGER BLOCK, 2" X 4" X 9" (4 REQD). POSITION FOR HORIZONTAL ALIGNMENT OF A PIECE MARKED (G), AND NAIL TO A PIECE MARKED (C) W/3-10d NAILS.
- (G) STRUT, 4" X 4" MATERIAL OF A LENGTH TO SUIT (4 REQD). POSITION AS SHOWN AND TOENAIL TO THE VERTICAL PIECES ON THE FORWARD AND REAR GATES W/2-12d NAILS AT EACH END. THE STRUTS SHOULD BE OF A LENGTH SO THAT WHEN THEY ARE INSTALLED THE REAR SURFACE OF THE VERTICAL PIECES ON THE REAR GATE WILL BE IN CLOSE CONTACT WITH THE REAR DOORS OF THE TRAILER WHEN THE DOORS ARE CLOSED.
- (H) VERTICAL STRUT BRACING PIECE, 2" X 4" X 6'-6" (2 REQD). POSITION AS SHOWN AND NAIL TO THE STRUTS W/3-12d NAILS AT EACH JOINT. NOTE: THIS AND THE NEXT PIECE CALLED OUT ARE ONLY REQUIRED FOR STRUTS WHICH ARE 7'-0" LONG OR GREATER IN LENGTH. A SET OF STRUT BRACING IS REQUIRED FOR EVERY 7'-0" OF STRUT LENGTH.
- (J) LATERAL STRUT BRACING PIECE, 2" X 4" BY TRAILER WIDTH IN LENGTH (2 REQD). POSITION AS SHOWN AND NAIL TO THE STRUTS W/3-12d NAILS AT EACH JOINT.

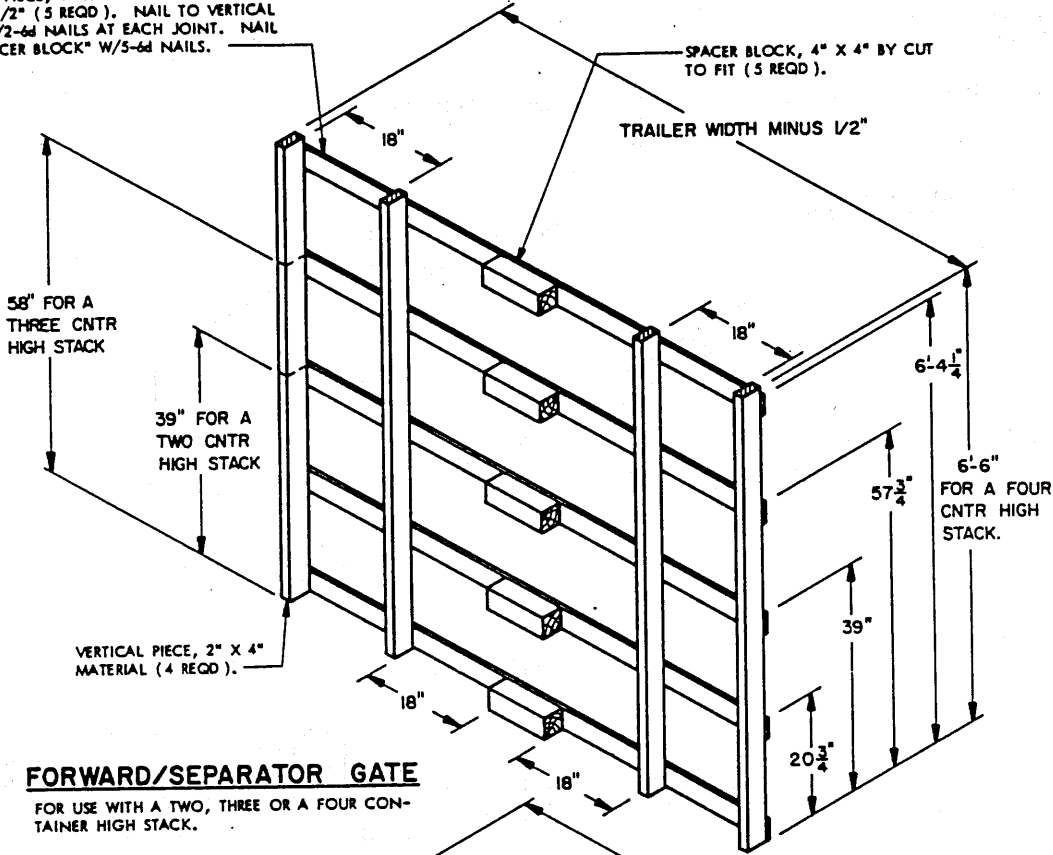


GATES-AND-STRUTS REAR BLOCKING

SEE NOTES ABOVE.

LATERAL PIECE, 1" X 4" BY TRAILER WIDTH MINUS 1/2" (5 REQD). NAIL TO VERTICAL PIECE W/2-6d NAILS AT EACH JOINT. NAIL TO "SPACER BLOCK" W/5-6d NAILS.

SPACER BLOCK, 4" X 4" BY CUT TO FIT (5 REQD).

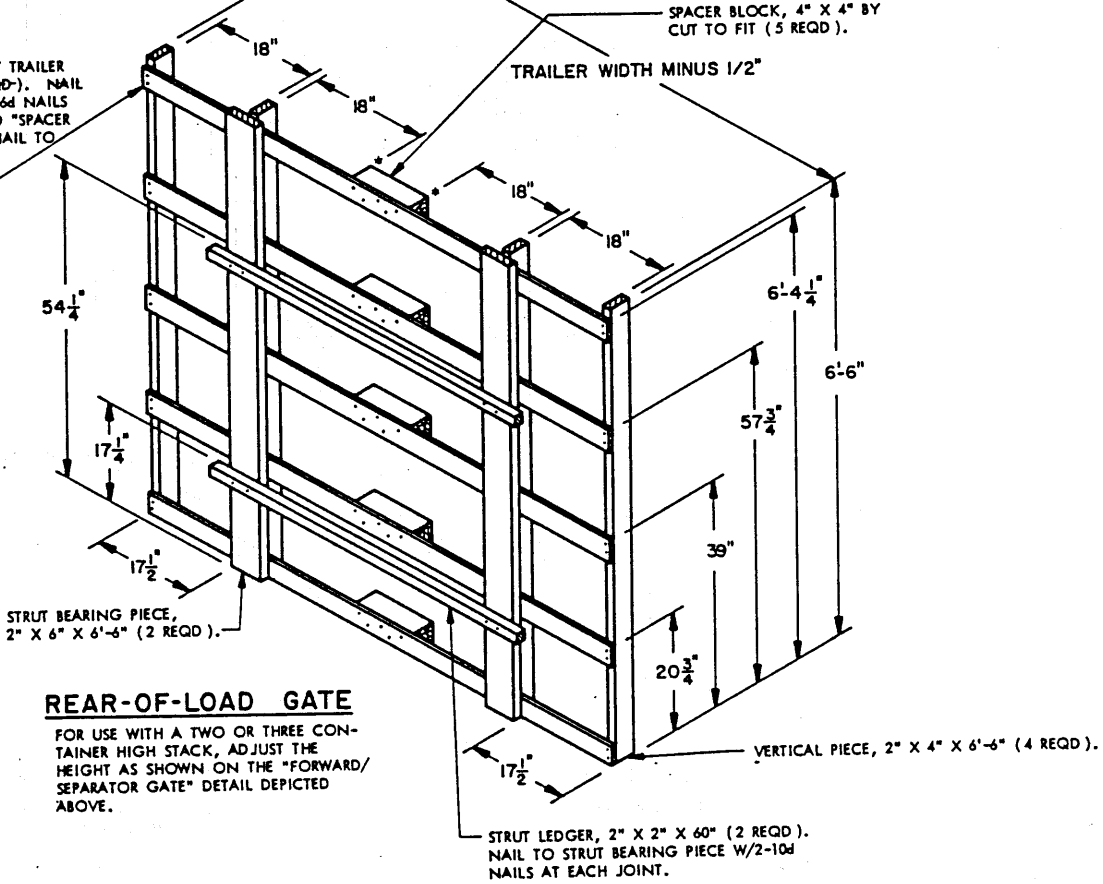


FORWARD/SEPARATOR GATE

FOR USE WITH A TWO, THREE OR A FOUR CONTAINER HIGH STACK.

LATERAL PIECE, 1" X 4" BY TRAILER WIDTH MINUS 1/2" (5 REQD). NAIL TO "VERTICAL PIECE" W/2-6d NAILS AT EACH JOINT. NAIL TO "SPACER BLOCK" W/5-6d NAILS. NAIL TO "STURT BEARING" PIECES W/4-6d NAILS AT EACH JOINT.

SPACER BLOCK, 4" X 4" BY CUT TO FIT (5 REQD).



REAR-OF-LOAD GATE

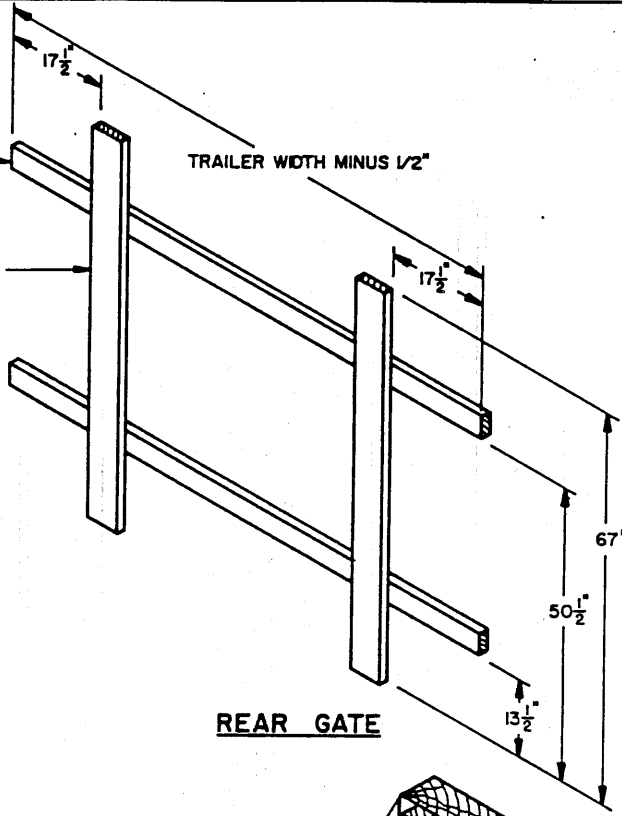
FOR USE WITH A TWO OR THREE CONTAINER HIGH STACK, ADJUST THE HEIGHT AS SHOWN ON THE "FORWARD/SEPARATOR GATE" DETAIL DEPICTED ABOVE.

STRUT LEDGER, 2" X 2" X 60" (2 REQD). NAIL TO STRUT BEARING PIECE W/2-10d NAILS AT EACH JOINT.

STRUT LEDGER, 2" X 4" BY TRAILER WIDTH MINUS 1/2" (2 REQD). NAIL TO STRUT BEARING PIECE W/3-10d NAILS AT EACH JOINT.

STRUT BEARING PIECE, 2" X 6" X 67" (2 REQD).

TRAILER WIDTH MINUS 1/2"



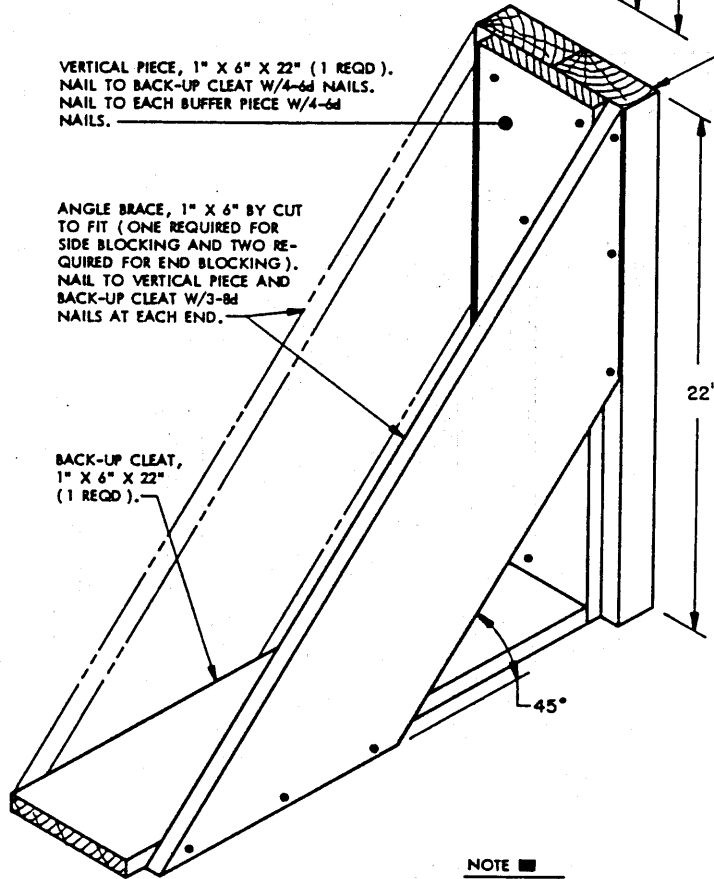
REAR GATE

VERTICAL PIECE, 1" X 6" X 22" (1 REQD). NAIL TO BACK-UP CLEAT W/4-6d NAILS. NAIL TO EACH BUFFER PIECE W/4-6d NAILS.

BUFFER PIECE, 2" X 4" X 22" (2 REQD). POSITION SIDE SIDE BY SIDE.

ANGLE BRACE, 1" X 6" BY CUT TO FIT (ONE REQUIRED FOR SIDE BLOCKING AND TWO REQUIRED FOR END BLOCKING). NAIL TO VERTICAL PIECE AND BACK-UP CLEAT W/3-8d NAILS AT EACH END.

BACK-UP CLEAT, 1" X 6" X 22" (1 REQD).

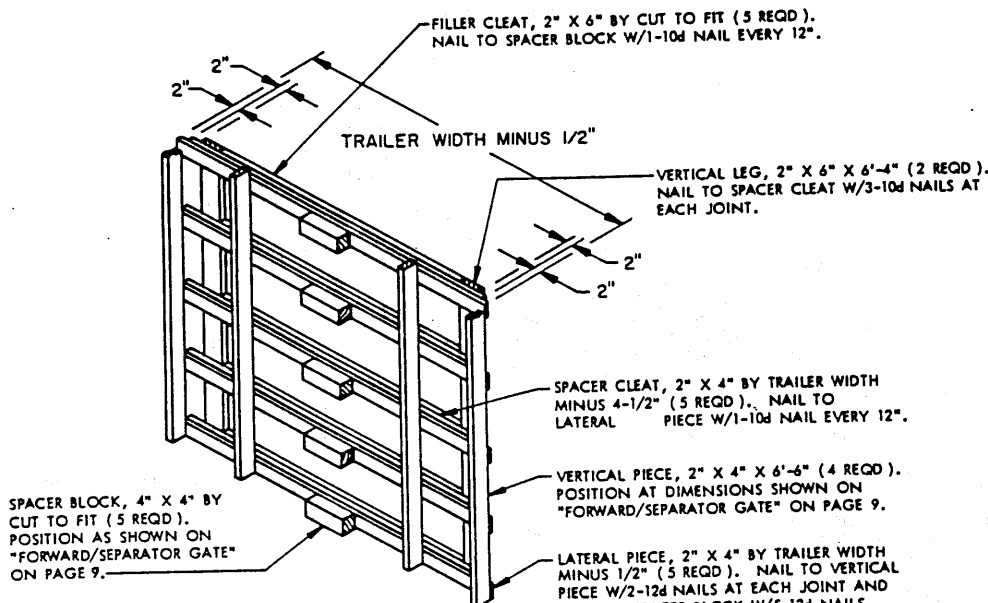


LTL BRACE

SEE "NOTE ■" AT RIGHT.

NOTE ■

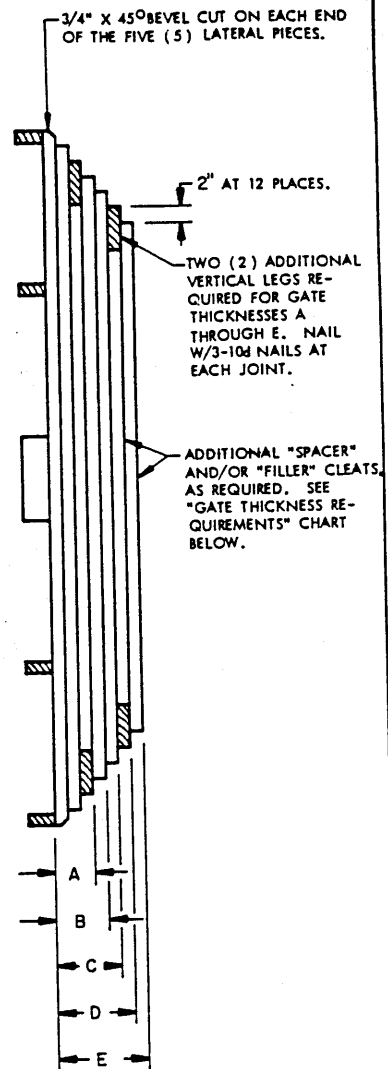
EACH BRACE AS APPLIED FOR LONGITUDINAL BRACING WILL SUPPORT 2,000 POUNDS. ALSO, A MINIMUM OF TWO (2) BRACES MUST BE USED AGAINST A CONTAINER SIDE. RELATIVE TO BRACES APPLIED FOR BRACING AGAINST THE ENDS OF CONTAINERS, NOT MORE THAN FOUR (4) CONTAINERS SHALL BE RETAINED WITH TWO (2) BRACES. ADDITIONAL LTL BRACE (S) MAY ALSO BE USED AT THE FORWARD END OF THE LADING IF DESIRED.



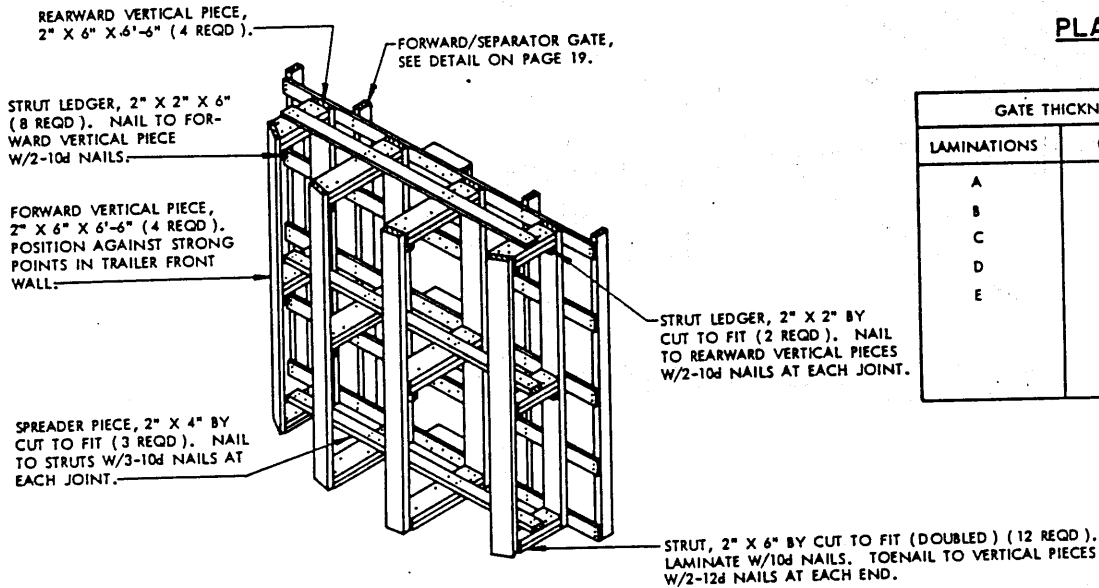
SPACER BLOCK, 4" X 4" BY CUT TO FIT (5 REQD.). POSITION AS SHOWN ON "FORWARD/SEPARATOR GATE" ON PAGE 9.

FORWARD BLOCKING-METHOD A

THIS "FORWARD BLOCKING" ASSEMBLY AS SHOWN IS DESIGNED FOR USE AT THE FORWARD END OF A FOUR (4) CONTAINER HIGH LOAD WHICH IS TO BE SHIPPED IN A TRAILER HAVING ROUNDED CORNERS OF A RADIUS OF 5" OR LESS. ADJUST HEIGHT OF ASSEMBLY AS NECESSARY FOR LOADS CONTAINING A LESSE NUMBER OF LAYERS. ADDITIONAL LAMINATIONS MUST BE ADDED TO THE BACK SIDE OF THE SPACER CLEATS TO COMPENSATE FOR LARGER SIZE CORNERS. SEE "GATE THICKNESS REQUIREMENTS" CHART AND "PLAN VIEW" TO THE RIGHT.



PLAN VIEW



FORWARD BLOCKING-METHOD B

THIS "FORWARD BLOCKING" ASSEMBLY AS SHOWN IS DESIGNED FOR USE AT THE FORWARD END OF A FOUR (4) CONTAINER HIGH LOAD WHICH IS TO BE SHIPPED IN A TRAILER HAVING A ROUND-FRONT OR HAVING ROUNDED CORNERS OF A RADIUS GREATER THAN 12". ADJUST HEIGHT OF ASSEMBLY AS NECESSARY FOR LOADS CONTAINING A LESSE NUMBER OF LAYERS.

GATE THICKNESS REQUIREMENTS	
LAMINATIONS	CORNER RADIUS (INSIDE)
A	UP THRU 5"
B	5" THRU 7"
C	7" THRU 8"
D	8" THRU 10"
E	10" THRU 12"
	FOR OVER 12" USE METHOD B PROCEDURES SHOWN AT LEFT.

CROSS PIECE, 2" X 4" X 18" (3 REQD).
NAIL TO LONGITUDINAL PIECE W/3-10d
NAILS AT EACH END AND TO A SPACER
PIECE W/3-10d NAILS.

LONGITUDINAL PIECE,
4" X 4" X 10'-5" (2 REQD).

FILLER PIECE, 1" X 4" X 27-1/2"
(4 REQD). NAIL TO LONGITUDINAL
PIECE W/6-6d NAILS.

SPACER PIECE,
2" X 4" BY CUT
TO FIT (3 REQD).

FILLER ASSEMBLY

POSITION ANTI-
CHAFING MATERIAL
BETWEEN METAL LIFT/
TIEDOWN BAR AND
STRAPPING.

SEAL FOR 3/4" STRAPPING.

INDICATES CONTAINER.

STAPLE STRAP TO CROSS
PIECE W/2-1-3/8" X 3/4"
STAPLES.

FILLER ASSEMBLY.

STEEL STRAPPING, 3/4" X .028" X 60" (2 REQD).
TO FORM A COMPLETE LOOP, OVER FILLER
ASSEMBLY AND AROUND LIFT/TIEDOWN BAR,
BRING ENDS BACK ON TOP OF CROSS PIECE
AND SEAL WITH ONE SEAL AND TWO PAIR OF
CRIMPS PER SEAL.

APPLICATION OF FILLER ASSEMBLY

TO BE USED ON THE TOP LAYER OF A LOAD ONLY.