

NOTES

GENERAL:

- A. THIS DOCUMENT HAS BEEN PREPARED AND ISSUED IN ACCORDANCE WITH AMCR 740-13.
- B. THIS DRAWING DEPICTS MINIMUM PROCEDURES APPLICABLE TO THE HANDLING, STOWAGE, AND BRACING ABOARD SHIPS OF THE COMPLETE ROUND IN THE M570 SHIPPING AND STORAGE CONTAINER (PALLETIZED), FOR THE CHAPARRAL MISSILE SYSTEM.
- C. OTHER TYPES OF CARGO MAY BE STOWED IN THE SAME HOLD OR TWEEN DECK, PROVIDING THE ITEMS STOWED ARE COMPATIBLE WITH THE DEPICTED UNITS SHOWN HEREIN. REFERENCE: COMPATIBILITY CHART, AND CLASSIFICATION, HANDLING AND STOWAGE CHART, "RULES AND REGULATIONS FOR MILITARY EXPLOSIVES AND HAZARDOUS MUNITIONS", COAST GUARD REGULATION NO. CG 108.
- D. LADING DATA:
 - DIMENSIONS ----- 128-1/4" LONG X 36" WIDE X 44-5/8" HIGH.
 - GROSS WEIGHT ----- 1402 LBS (APPROX).
 - CUBE ----- 119 CU. FT.
- E. THIS ITEM IS A DOT CLASS "A" EXPLOSIVE.

HANDLING:

- A. PERTINENT PROVISIONS OF TITLE 46 CODE OF FEDERAL REGULATIONS APPLY.
- B. HANDLING OF THE PALLETIZED UNIT SHOULD BE ACCOMPLISHED BY USING SLING EXTENSIONS SECURELY POSITIONED AGAINST THE SKIDS UNDER THE UNIT AS SHOWN.
- C. PALLETIZED UNITS MAY BE HANDLED TWO (2) OR THREE (3) HIGH IF UNITIZED AS SHOWN ON PAGE 3. STACKING OF UNITS IS LIMITED TO THREE (3) HIGH.
- D. THE HANDLING SLING SHALL BE OF A DESIGN AND CONFIGURATION TO LIFT THE ITEM IN SUCH A MANNER THAT THE CABLE LEGS DO NOT APPLY EXCESSIVE PRESSURE WHICH MAY DAMAGE THE PALLETIZED UNIT.
- E. ALTHOUGH DESIRABLE, A LEVEL LIFT IS NOT MANDATORY. THE CENTER OF BALANCE OF THIS ITEM IS SHOWN TO ASSIST IN DETERMINING CABLE LENGTHS TO ASSURE A SAFE LIFT.

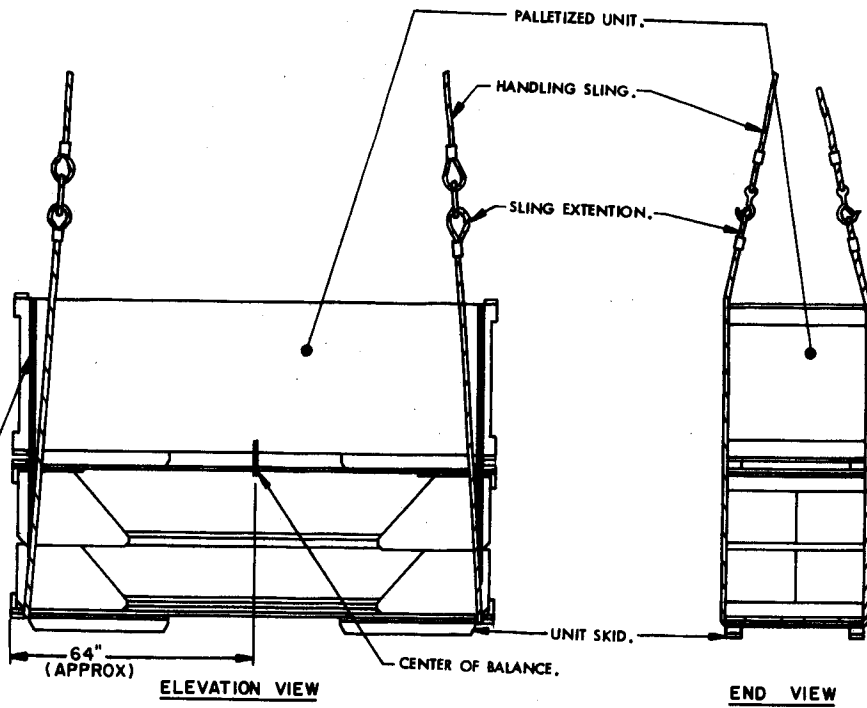
STOWAGE AND BRACING:

- A. OTHER CARGO ITEMS MAY BE OVER-STOWED ON THE DEPICTED UNITS. CAUTION: THE WEIGHT OF OVER-STOWED CARGO MUST NOT CRUSH OR OTHERWISE DAMAGE THE CONTAINERS OF THE PALLETIZED UNITS.
- B. IF HEIGHT CLEARANCE IN HOLD, TWEEN DECK OR HATCH OPENING PERMITS, PALLETIZED UNITS MAY BE STOWED THREE (3) LAYERS HIGH. HOWEVER, WHEN STOWED ON THE WEATHER DECK, STOWAGE IS LIMITED TO TWO (2) LAYERS HIGH.
- C. THE TYPICAL STOWAGE ON WEATHER DECK PROCEDURES SHOWN ON PAGE 9 ARE ONLY FOR GUIDANCE PURPOSES. AS A MINIMUM, IT OR A COMPARABLE STOWAGE METHOD WILL BE USED. NOTE: WEATHER DECK STOWAGE WILL ONLY BE UTILIZED WHEN CONDITIONS WARRANT SUCH STOWAGE AND CONCURRENCE OF THE U.S. ARMY MISSILE COMMAND HAS BEEN ACQUIRED.
- D. WHEN STOWING THE XM599 CONTAINERS ON THE WEATHER DECK, THE CONTAINERS MUST BE COVERED WITH WATERPROOF BARRIER MATERIAL WHICH IS PROPERLY SECURED AND LASHED TO PRECLUDE LOOSENING OR DISPLACEMENT DURING TRANSIT.
- E. SPECIES, GRADE AND SIZE OF LUMBER TO BE USED WILL COMPLY WITH REQUIREMENTS OF CURRENT SHIPWRIGHT-CARPENTRY AND RELATED SERVICES CONTRACTS. BRACING METHODS AND LUMBER SIZE DEPICTED IN THIS DRAWING ARE CONSIDERED MINIMUM AND ARE NOT INTENDED TO CONFLICT WITH CONTRACT REQUIREMENTS.

REVISIONS

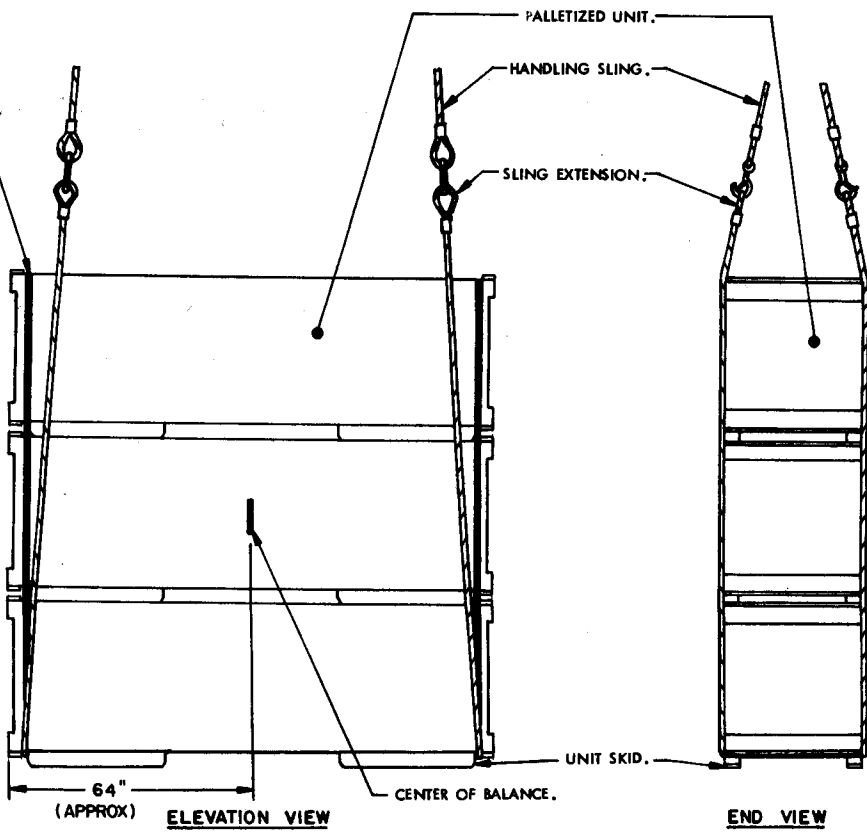
REVISION NO. 1, DATED DECEMBER 1973, CONSISTS OF:

1. ADDING PROCEDURES FOR STOWAGE ON THE WEATHER DECK.
2. ADDING STOWAGE AND BRACING NOTES.
3. CHANGING LADING DATA IN GENERAL NOTE "D".

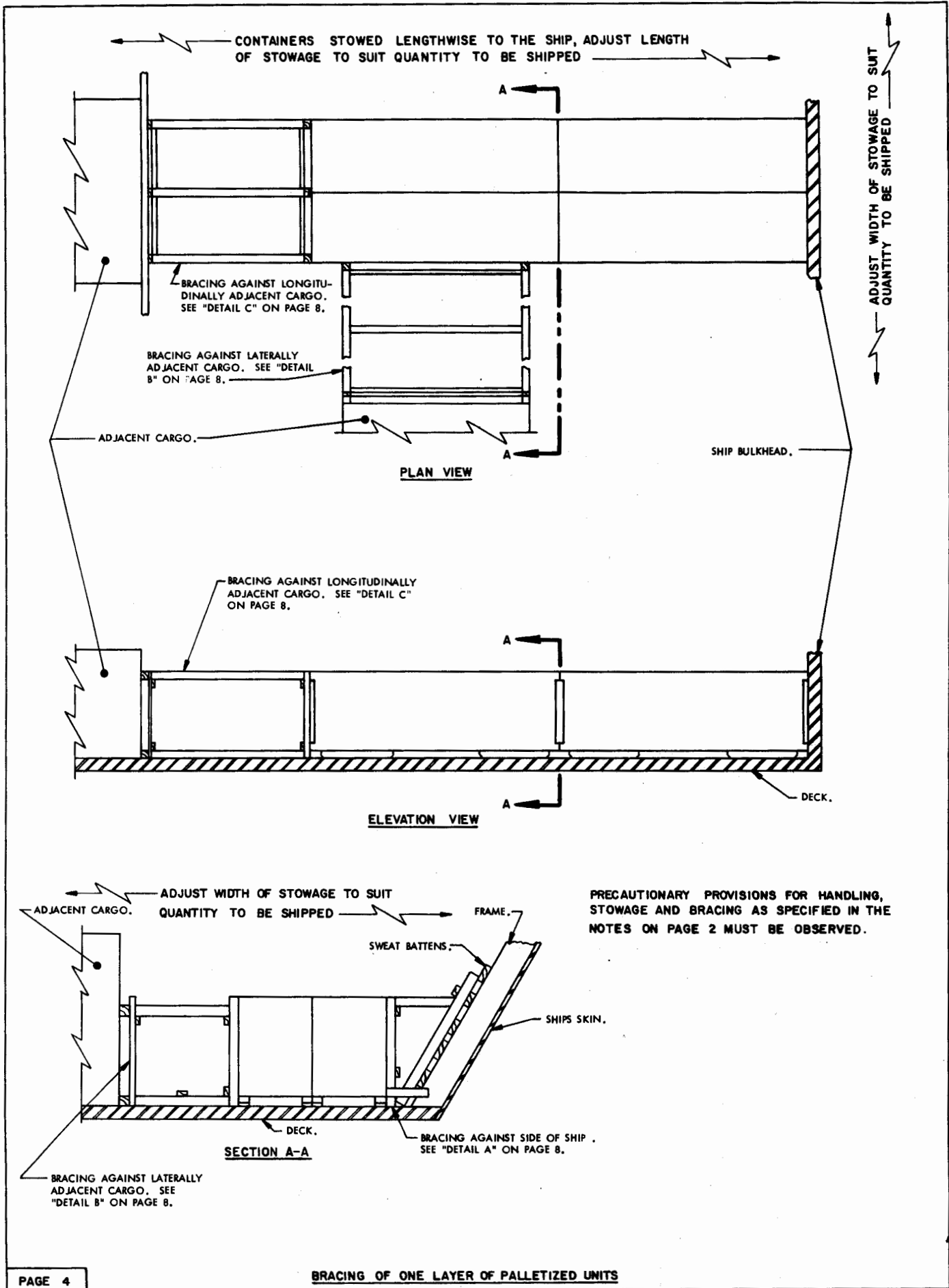


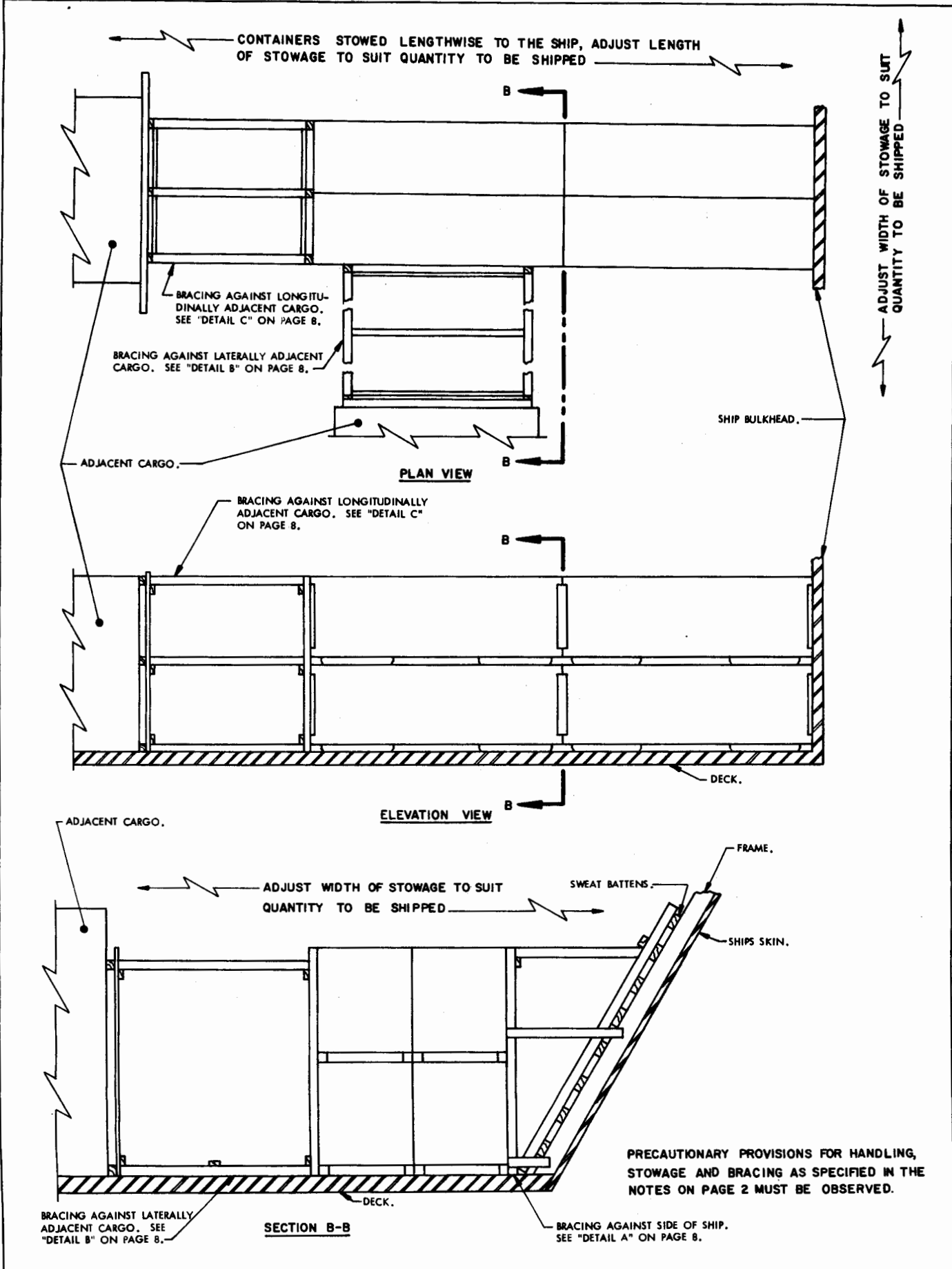
UNITS MAY BE HANDLED INDIVIDUALLY, OR MAY BE STACKED AS SHOWN. IF UNITS ARE HANDLED IN A STACKED CONFIGURATION, THE STACK SHOULD BE UNITIZED W/2-1-1/4" X .035" STEEL STRAPS, AS SHOWN, OR SECURED IN SOME OTHER APPROVED METHOD TO PREVENT SLIPPAGE OF THE UPPER UNIT(S). IF UNITS ARE RECEIVED UNITIZED, EXISTING UNITIZING STRAPS MAY BE LEFT INTACT.

PRECAUTIONARY PROVISIONS FOR HANDLING, STOWAGE AND BRACING AS SPECIFIED IN THE NOTES ON PAGE 2 MUST BE OBSERVED.

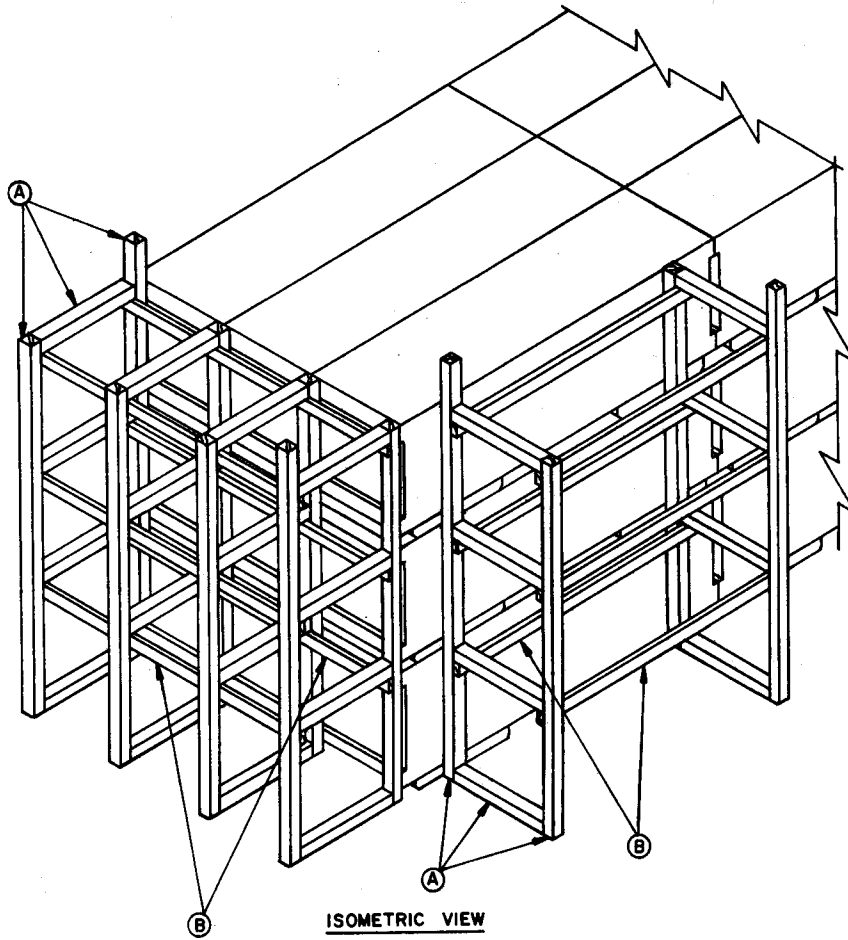


ATTACHMENT OF HANDLING SLING TO TWO AND/OR THREE PALLETIZED UNITS



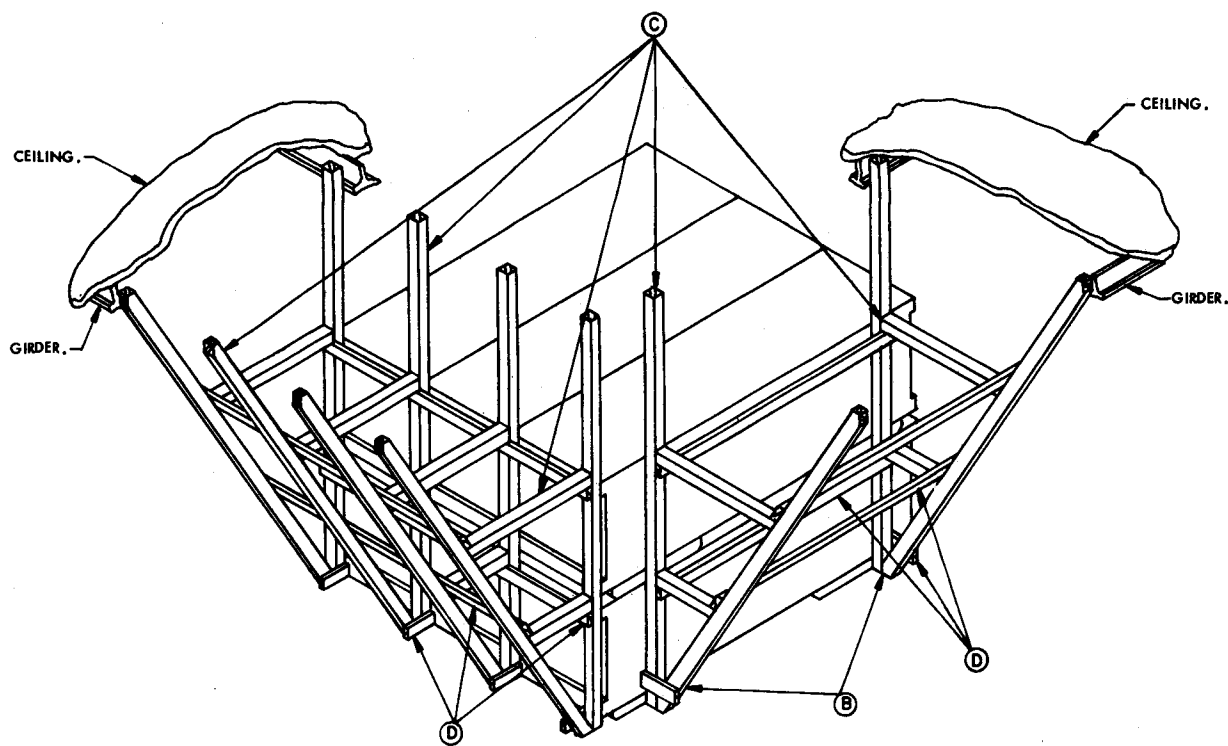


BRACING OF TWO LAYERS OF PALLETIZED UNITS



MINIMUM LUMBER SIZES	
(A)	4" X 4"
(B)	2" X 4"

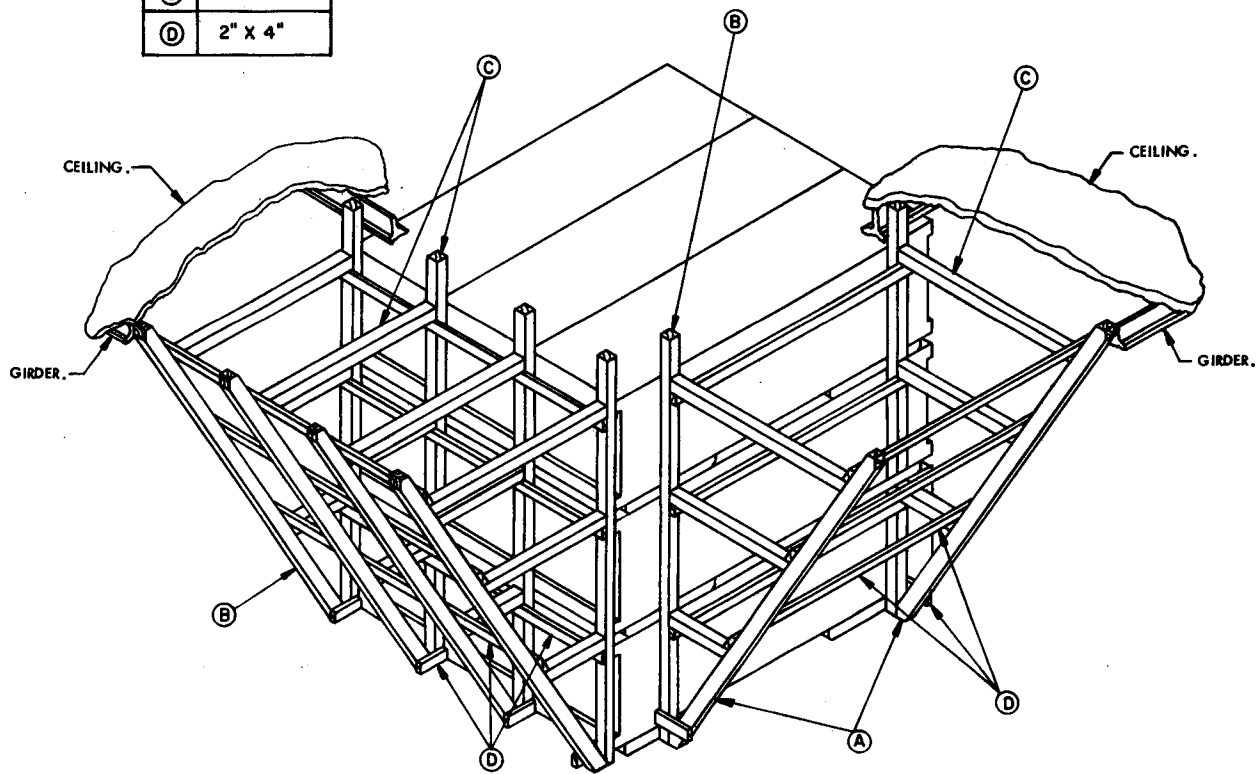
PRECAUTIONARY PROVISIONS FOR HANDLING,
STOWAGE AND BRACING AS SPECIFIED IN THE
NOTES ON PAGE 2 MUST BE OBSERVED.



ISOMETRIC VIEW

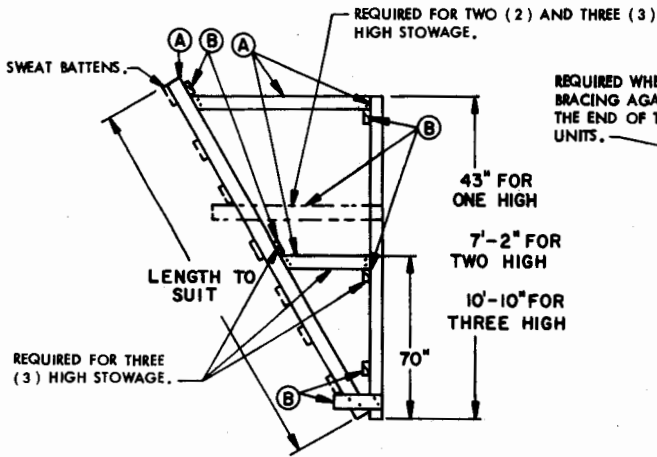
MINIMUM LUMBER SIZES	
(A)	4" X 8"
(B)	4" X 6"
(C)	4" X 4"
(D)	2" X 4"

PRECAUTIONARY PROVISIONS FOR HANDLING STORAGE AND BRACING AS SPECIFIED IN THE NOTES ON PAGE 2 MUST BE OBSERVED.



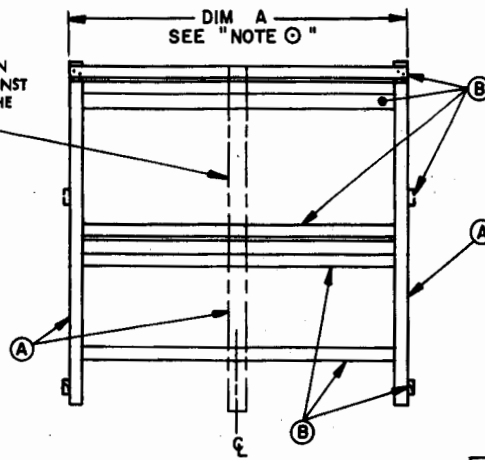
ISOMETRIC VIEW

ALTERNATIVE METHODS OF BRACING PALLETIZED UNITS

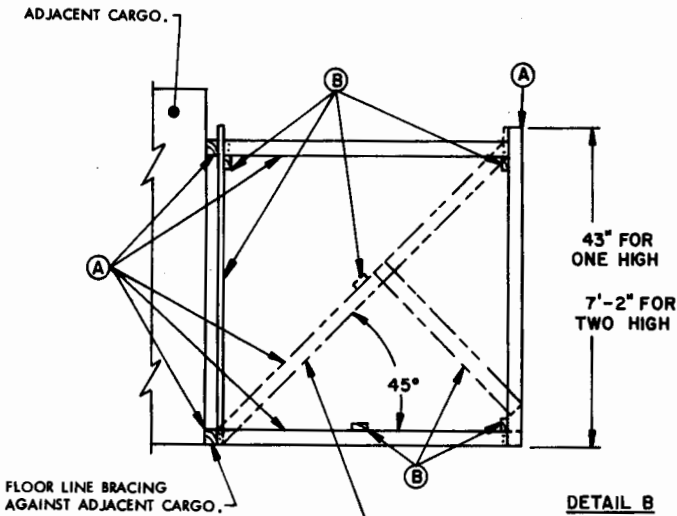


DETAIL A

SUGGESTED BRACING AT SIDE OF SHIP.

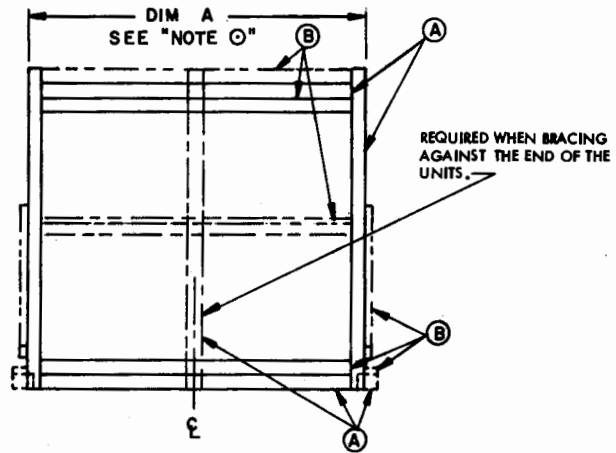


MINIMUM LUMBER SIZES	
(A)	4" x 4"
(B)	2" x 4"

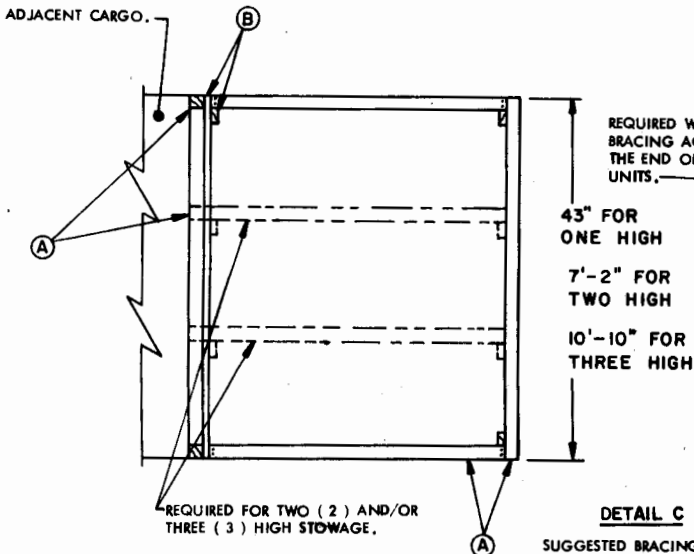


DETAIL B

SUGGESTED BRACING AGAINST ADJACENT CARGO FOR ONE (1) AND TWO (2) UNIT HIGH LOADS. SEE "DETAIL C" FOR BRACING REQUIREMENTS FOR A THREE (3) UNIT HIGH LOAD.

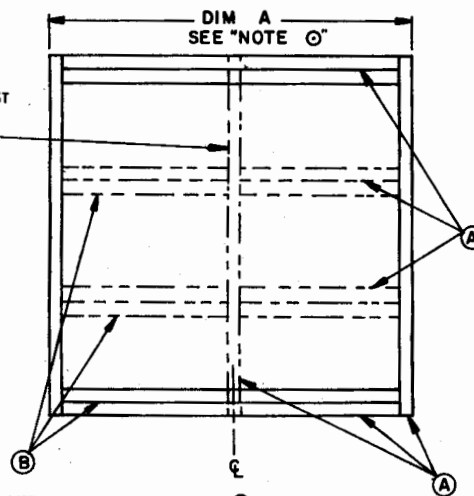


PRECAUTIONARY PROVISIONS FOR HANDLING, STORAGE AND BRACING AS SPECIFIED IN THE NOTES ON PAGE 2 MUST BE OBSERVED.

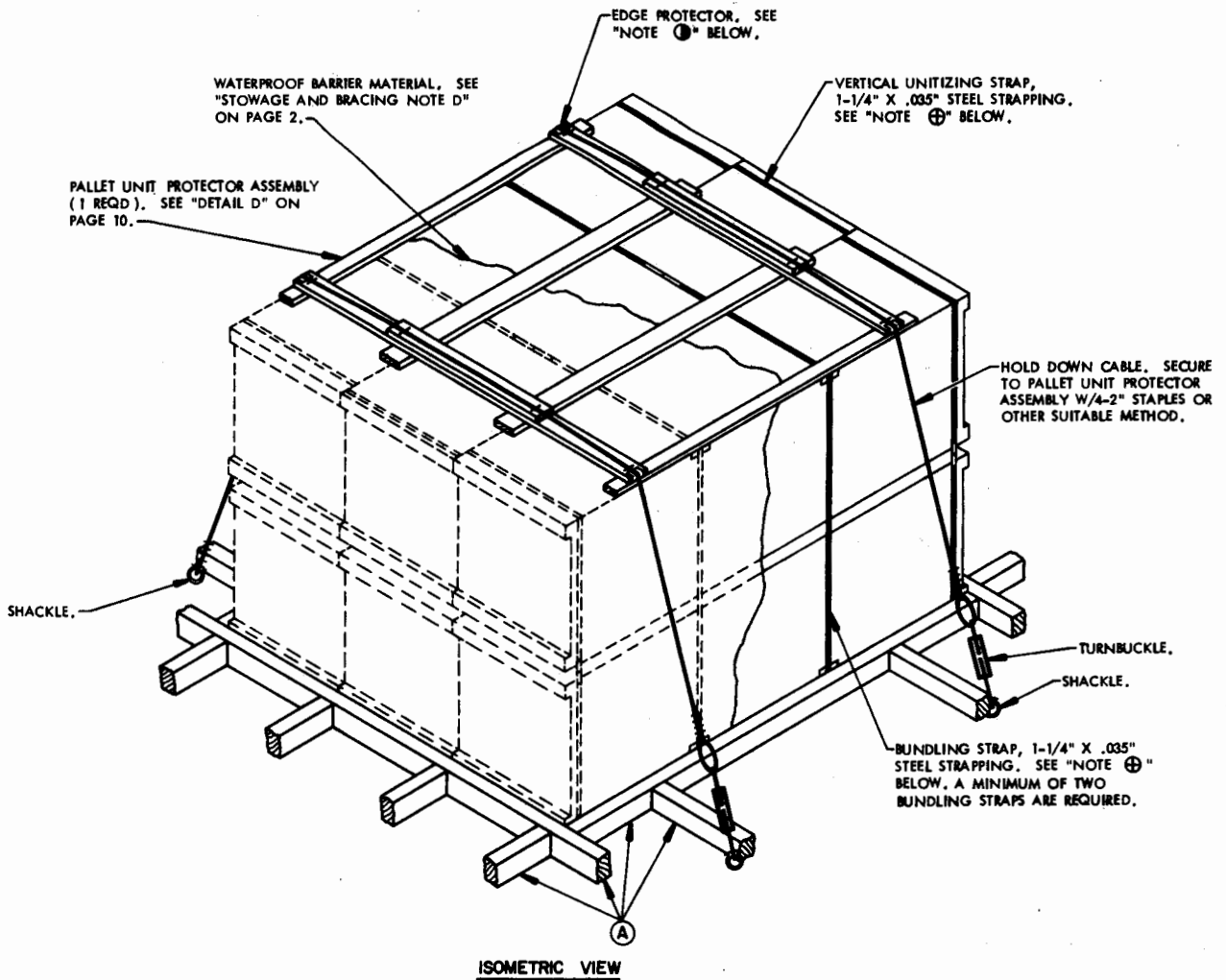


DETAIL C

SUGGESTED BRACING AGAINST ADJACENT CARGO FOR ONE (1), TWO (2) AND THREE (3) UNIT HIGH LOADS.



NOTE O :
WHEN BRACING AGAINST THE SIDE OF THE UNIT, DIM A=8'-0".
WHEN BRACING AGAINST THE END OF A 2-UNIT WIDE LOAD, DIM A=72".



MINIMUM LUMBER SIZES	
(A)	4" X 6"

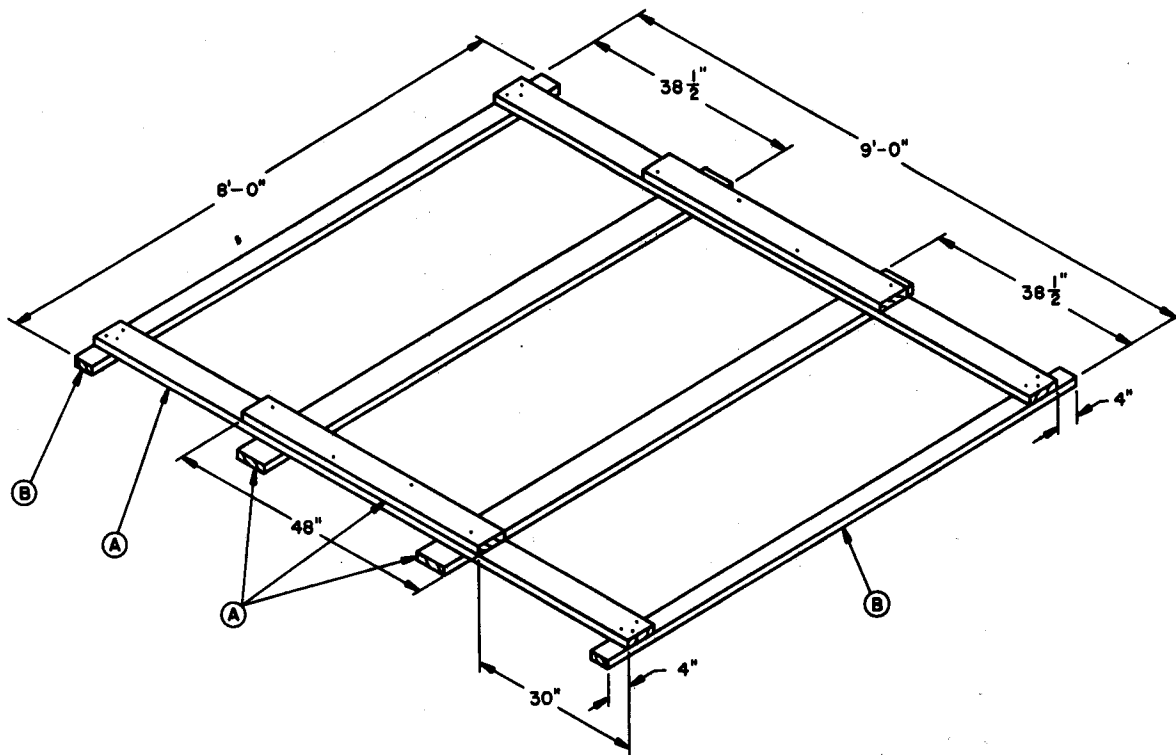
NOTE ①:

IF COMMERCIAL EDGE PROTECTORS ARE NOT AVAILABLE THE EDGE PROTECTORS MAY BE FABRICATED FROM A 6" X 9" PIECE OF 18 (MINIMUM) GAGE SHEET METAL.

NOTE ②:

IF PALLET UNITS ARE LOADED ABOARD SHIP INDIVIDUALLY TWO (2) STEEL STRAPS (1-1/4" X .035") WILL BE INSTALLED TO VERTICALLY UNITIZE A STACK OF TWO (2) PALLET UNITS. THE BUNDLING STRAP IDENTIFIED ABOVE WILL BE APPLIED IN ADDITION TO THE VERTICAL UNITIZING STRAP. STOWAGE ON THE WEATHER DECK IS RESTRICTED TO A MAXIMUM OF TWO (2) PALLET UNITS HIGH.

PRECAUTIONARY PROVISIONS FOR HANDLING, STOWAGE AND BRACING AS SPECIFIED IN THE NOTES ON PAGE 2 MUST BE OBSERVED.



DETAIL D
PALLET UNIT PROTECTOR ASSEMBLY.

MINIMUM LUMBER SIZES	
(A)	2" X 6"
(B)	2" X 4"

PRECAUTIONARY PROVISIONS FOR HANDLING, STOWAGE AND BRACING AS SPECIFIED IN THE NOTES ON PAGE 2 MUST BE OBSERVED.