

## ALL SYSTEMS

**LOADING AND BRACING (TL & LTL) ON  
 FLAT BED TRAILERS OF TYPE 1 (HALF  
 SIZE) AND TYPE 2 (STANDARD) CARGO  
 TRANSPORTERS (CONEX CONTAINERS)  
 WHEN LOADED WITH MISSILE/ROCKET  
 ASSOCIATED COMMODITIES \***

### INDEX

<u>ITEM</u>	<u>PAGE(S)</u>
GENERAL NOTES, AND MATERIAL SPECIFICATIONS-----	2
8-UNIT LOAD ON A 40'-0" LONG BY 8'-0" WIDE TRAILER (TYPE 1 CARGO TRANSPORTER)-----	3
4-UNIT LOAD ON A 40'-0" LONG BY 8'-0" WIDE TRAILER (TYPE 2 CARGO TRANSPORTER)-----	4
TYPICAL LTL (TYPE 1 & 2 CARGO TRANSPORTERS) (1-UNIT LOADS)-----	5
UNITIZATION DETAILS-----	6

THIS DRAWING SUPERSEDES USAMC  
 DRAWING 19-48-5742-GM 11-16-1.

\* THE OUTLOADING PROCEDURES DELINEATED  
 HEREIN ARE APPLICABLE TO THE MOVEMENT  
 OF CONEX CONTAINERS WHICH ARE LOADED  
 WITH ANY RELATIVELY SMALL COMMODITY,  
 WHETHER AMMUNITION OR GROUND SUPPORT  
 EQUIPMENT ORIENTED. HOWEVER, OTHER  
 REGULATIONS/DIRECTIVES APPLY TO SUCH  
 MATTERS AS SELECTION OF ITEM FOR  
 CONEX MOVEMENT, ITEM PACKAGING  
 SPECIFICATIONS AND SO FORTH.

DO NOT SCALE

<b>DESIGNER</b> <i>RSV</i>	<b>PROJ ENGR</b> <i>RWK</i>	<b>CHECKER</b> <i>JPP/WB/4</i>	<b>APPROVED</b> <i>[Signature]</i>								
<b>DATE</b> <i>6/27/68</i>	<b>BMC AMMO CTR</b> <i>RIC</i>		<small>COMMANDER, SUBANA ARMY DEPOT</small>								
<b>REVISIONS</b>			<b>APPROVED BY ORDER OF COMMANDER, ARMY MATERIEL COMMAND</b> <i>[Signature]</i>								
1	23 JUL 68	<i>[Initials]</i>		<small>ARMY MISSILE COMMAND</small>							
			<small>ARMY SUPPLY &amp; MAINTENANCE COMMAND</small>								
			<b>MATERIEL COMMAND U.S.A.</b>								
			<b>19 FEBRUARY 1965</b>								
			<table border="1" style="width: 100%; border-collapse: collapse;"> <tr> <th style="width: 25%;">CLASS</th> <th style="width: 25%;">DIVISION</th> <th style="width: 25%;">DRAWING</th> <th style="width: 25%;">FILE</th> </tr> <tr> <td style="text-align: center;">19</td> <td style="text-align: center;">48</td> <td style="text-align: center;">5742</td> <td style="text-align: center;">GM 1111</td> </tr> </table>	CLASS	DIVISION	DRAWING	FILE	19	48	5742	GM 1111
CLASS	DIVISION	DRAWING	FILE								
19	48	5742	GM 1111								

**GENERAL NOTES**

(GENERAL NOTES CONTINUED)

- A. THIS DOCUMENT HAS BEEN PREPARED AND ISSUED IN ACCORDANCE WITH AMCR 740-13, AND AUGMENTS TM 743-200-1 (CHAPTER 5).
- B. THE OUTLOADING PROCEDURES SPECIFIED HEREIN ARE APPLICABLE TO THE TYPE 1 AND TYPE 2 CARGO TRANSPORTERS. BOTH TYPE 1 AND TYPE 2 TRANSPORTERS MAY BE SHIPPED WITHIN THE SAME LOAD. REFER TO GENERAL NOTE "N" FOR GUIDANCE. SUBSEQUENT REFERENCE TO TYPE 1 OR TYPE 2 TRANSPORTER HEREIN MEANS THE TYPE 1 OR TYPE 2 CARGO TRANSPORTER. **CAUTION:** THE CONTENTS OF A TYPE 1 OR TYPE 2 TRANSPORTER ARE LIMITED TO NOT MORE THAN 7,800 POUNDS OF LADING EVENLY DISTRIBUTED OVER THE TRANSPORTER FLOOR.
- C. THE LOADS AS SHOWN HEREIN ARE BASED ON FLAT BED TRAILERS 40'-0" LONG BY 8'-0" WIDE HAVING WOOD OR WOOD AND METAL FLOORS. TRAILERS HAVING ALL METAL FLOORS WILL NOT BE USED.
- D. FOR DETAILS OF THE CARGO TRANSPORTER, TYPE 1 (1/2 SIZE), SEE MILITARY SPECIFICATION MIL-B-11886 (SEE GENERAL NOTE "Q").  
 OUTSIDE DIMENSIONS ----- 51" LONG X 75" WIDE X 82-1/2" HIGH.  
 TARE WEIGHT ----- 1,050 POUNDS (APPROX).  
 MAXIMUM CONTENT WEIGHT ----- 7,800 POUNDS.  
  
 FOR DETAILS OF THE CARGO TRANSPORTER, TYPE 2 (STANDARD), SEE MILITARY SPECIFICATION MIL-B-11886.  
 OUTSIDE DIMENSIONS ----- 102" LONG X 75" WIDE X 82-1/2" HIGH.  
 TARE WEIGHT ----- 1,430 POUNDS (APPROX).  
 MAXIMUM CONTENT WEIGHT ----- 7,800 POUNDS.
- E. SELECTION OF THE VEHICLE TO BE USED TO TRANSPORT GUIDED MISSILE AMMUNITION AND/OR COMPONENTS THEREOF MUST COMPLY WITH AR 55-355, CHAPTER 213, FOR EXPLOSIVES OR OTHER DANGEROUS ARTICLES, IN FULL.
- F. THE GROSS WEIGHT AND AXLE DISTRIBUTION OF WEIGHT FOR A LOAD WILL BE THE RESPONSIBILITY OF THE CARRIER. THE CARRIER WILL ADVISE THE SHIPPER OF THE APPLICABLE LOADING REQUIREMENTS AND THE SHIPPER WILL LOAD ACCORDINGLY.
- G. **NOTICE:** A SHIPMENT WILL BE POSITIONED ON THE TRAILER CONSISTENT WITH STATE LAWS. THE NUMBER OF UNITS MAY BE ADJUSTED TO FIT THE SIZE OF THE TRAILER TO BE LOADED OR THE QUANTITY TO BE SHIPPED; HOWEVER, THE APPROVED METHODS SHOWN HEREIN MUST BE FOLLOWED AS CLOSELY AS POSSIBLE FOR BLOCKING, BRACING, AND STAYING OF THE DESIGNATED ITEM.
- H. THE SPECIFIED OUTLOADING PROCEDURES ARE APPLICABLE FOR THE SHIPMENT OF CARGO TRANSPORTERS LOADED WITH EXPLOSIVE OR NON-EXPLOSIVE ITEMS AND/OR EMPTY CARGO TRANSPORTERS. WHEN CARGO TRANSPORTERS CONTAIN EXPLOSIVE ITEMS, 18" X 32" PLACARD BOARDS MUST BE PROVIDED AS REQUIRED BY LAW AND/OR REGULATION. **CAUTION:** PLACARD BOARDS AND BOARD MOUNTING BRACKETS MUST NOT BE NAILED TO THE LADING.
- J. LOADING, BLOCKING AND BRACING METHODS SHOWN HEREIN ARE APPROVED FOR HIGH DENSITY, LOW VOLUME MATERIAL INCLUDING DOT CLASS "A" EXPLOSIVES WHICH ARE INTERNALLY BLOCKED AND BRACED INSIDE THE TRANSPORTER IN ACCORDANCE WITH U. S. ARMY MATERIEL COMMAND APPROVED "FILLING" DRAWINGS OF THE 19-48 SERIES, OR APPLICABLE PARAGRAPHS OF DOT REGULATIONS (TARIFF NO. 19 AND SUBSEQUENT ISSUES THEREOF).
- K. OTHER TYPES OF LADING ITEMS MAY BE LOADED ON THE TRAILERS WHICH ARE PARTIALLY LOADED WITH THE DESIGNATED ITEM, PROVIDING THE TOTAL LOAD IS COMPATIBLE, EXISTING DIRECTIVES ARE NOT VIOLATED, AND THE OTHER ITEMS ARE BLOCKED AND BRACED TO EQUAL THE BLOCKING AND BRACING CRITERIA SPECIFIED HEREIN.

- L. WHEN STEEL STRAPPING IS SEALED AT AN END-OVER-END LAP JOINT, A MINIMUM OF TWO (2) SEALS, BUTTED TOGETHER, WITH TWO (2) PAIR OF CRIMPS PER SEAL MUST BE USED TO SEAL THE JOINT.
- M. IF THE STAKE POCKETS AND/OR ANCHOR DEVICES ON A TRAILER ARE NOT PROPERLY LOCATED TO PERMIT SECURING OF THE TWO INCH (2") STRAPPING AS SHOWN, OR IF THE POCKETS AND/OR ANCHOR DEVICES ARE NOT EQUAL TO OR GREATER THAN THE STRENGTH OF THE TIE-DOWN STRAPS, STRAPPING MAY BE APPLIED TO FORM A COMPLETE LOOP WHICH ENCOMPASSES BOTH THE LADING AND THE TRAILER FRAME AND/OR BED. **CAUTION:** WHEN INSTALLING A TIE-DOWN STRAP WHICH ENCOMPASSES BOTH LADING AND TRAILER FRAME AND/OR BED, AVOID TRAILER WHEELS, FIFTH WHEEL PLATE, CONTROLS, AND OTHER APPURTENANCES. USE EDGE PROTECTORS OR PADS ON ALL SHARP EDGES AS CUSHIONING FOR THE STRAPPING. **NOTE:** PROVISIONS OF GENERAL NOTE "L" WILL ALSO APPLY.
- N. TYPE 1 AND 2 CARGO TRANSPORTERS MAY BE SHIPPED ON THE SAME TRAILER. TYPE 1 TRANSPORTERS MUST BE UNITIZED INTO GROUPS OF TWO WITH TWO 1-1/4" STEEL STRAPS. AN INDIVIDUAL TYPE 1 TRANSPORTER MUST BE UNITIZED TO AN ADJACENT TYPE 1 UNITIZED UNIT (SEE DETAIL "D" ON PAGE 6) OR TO A TYPE 2 TRANSPORTER WITH TWO 1-1/4" STEEL STRAPS (SEE DETAIL "F" ON PAGE 6).
- O. DUNNAGE LUMBER SPECIFIED THROUGHOUT THIS PROCEDURAL DRAWING IS OF NOMINAL SIZE. FOR EXAMPLE, 2" X 6" MATERIAL IS ACTUALLY 1-5/8" THICK BY 5-5/8" WIDE.
- P. **NOTICE:** A STAGGERED NAILING PATTERN WILL BE USED WHEN DUNNAGE IS NAILED TO THE FLOOR OF THE TRANSPORTING VEHICLE, OR WHEN LAMINATING DUNNAGE. ALSO, THE NAILING PATTERN FOR AN UPPER PIECE OF LAMINATED DUNNAGE WILL BE ADJUSTED AS REQUIRED SO THAT A NAIL FOR THAT PIECE WILL NOT BE DRIVEN THROUGH ONTO OR RIGHT BESIDE A NAIL IN A LOWER PIECE.
- Q. CARGO TRANSPORTERS MANUFACTURED IN COMPLIANCE WITH MILITARY SPECIFICATION MIL-B-21560 MAY BE USED FOR THE TRANSPORTATION OF MILITARY EXPLOSIVES AND HAZARDOUS MUNITIONS AND GROUND SUPPORT EQUIPMENT ITEMS; HOWEVER, THE LIMITATIONS SPECIFIED WITHIN GENERAL NOTE "B" WILL APPLY.

**REVISIONS**

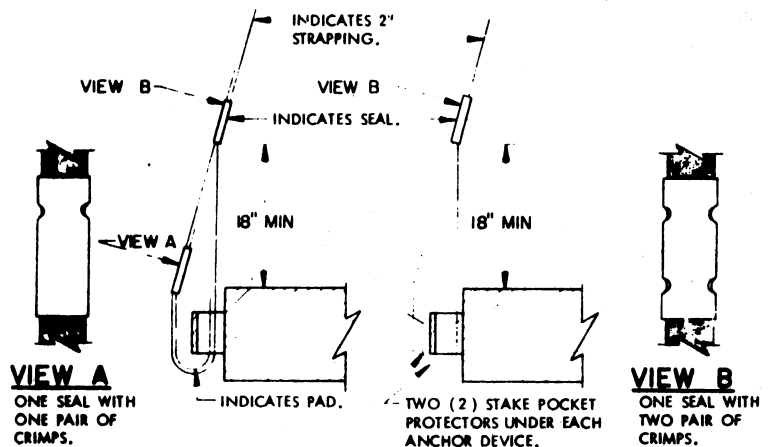
REVISION NO. 1, DATED 23 JULY 1968, CONSISTS OF:

1. CHANGE IN DRAWING TITLE.
2. FILE NUMBER CHANGE.
3. ADDITION OF WEIGHT LIMITATION FOR TRANSPORTER CONTENTS.
4. CHANGE IN MATERIAL SPECIFICATIONS.

(GENERAL NOTES CONTINUED AT RIGHT)

**MATERIAL SPECIFICATIONS**

- LUMBER**-----: SEE TM 743-200-1, DUNNAGE LUMBER; FED SPEC MM-L-751.
- NAILS**-----: COMMON, CEMENT COATED OR CHEMICALLY ETCHED, FED SPEC FF-N-105.  
 ALT: ANNULAR-RING TYPE NAIL OF SAME SIZE.
- STEEL STRAPPING** --: TYPE I OR IV, CLASS A OR B OR C, FED SPEC QQ-5-781.  
 FOR FSN SEE 58-38-100.
- STRAP STAPLE,**  
**STRAP SEALS, STAKE**  
**POCKET PROTECTOR**: COMMERCIAL GRADE.



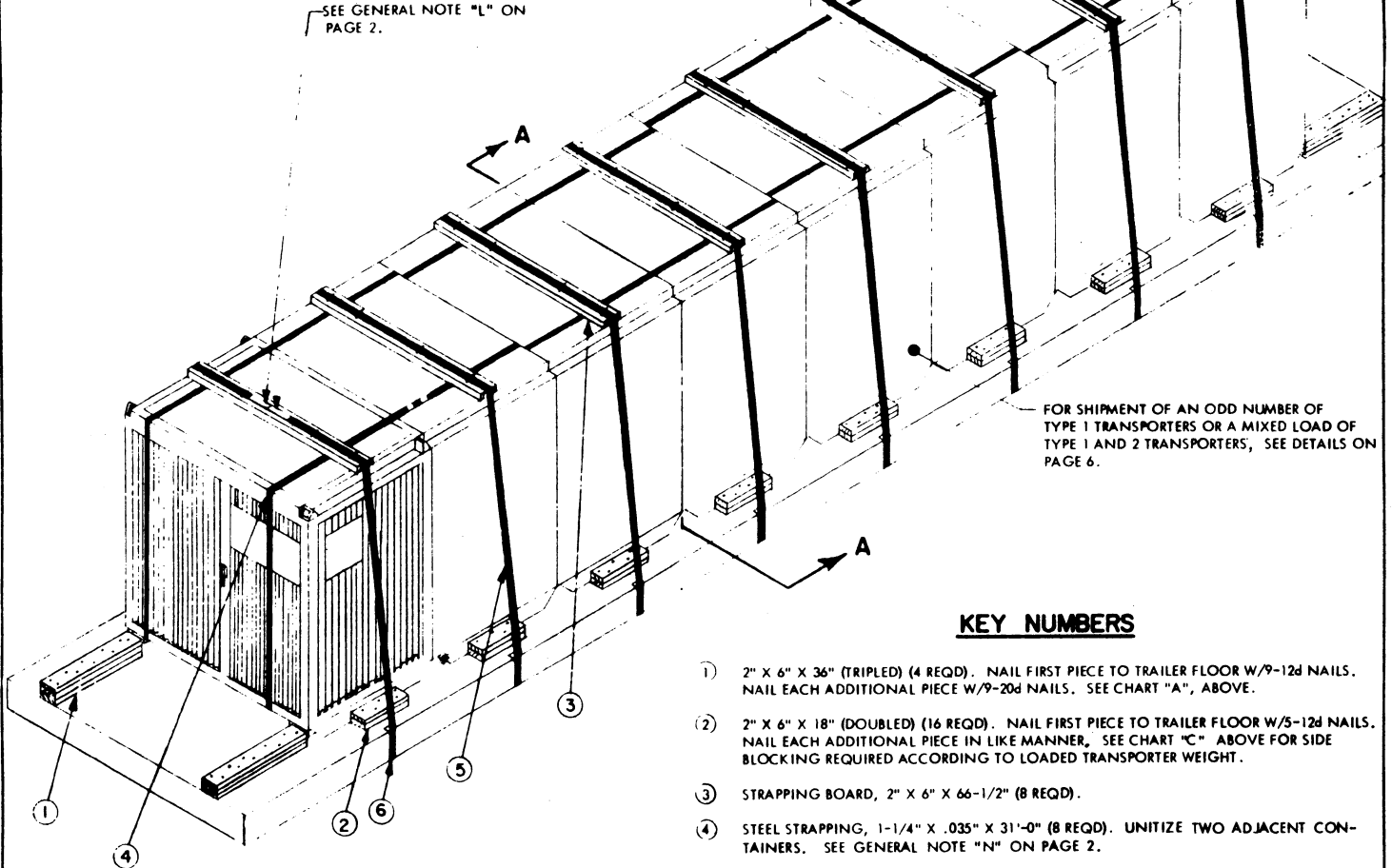
**DETAIL A**  
 METHOD FOR INSTALLING 2" STRAPPING AND PAD.

**DETAIL B**  
 METHOD FOR INSTALLING 2" STRAPPING AND STAKE POCKET PROTECTORS (ALT PAD).

MAX GROSS WT.	NO. BACKUPS (TRIPLED)	NO. NAILS/LAYER
0 TO 7,500 LBS	2-18" LONG	5
7,500 TO 10,000 LBS	2-24" LONG	6
10,000 TO 12,000 LBS	2-30" LONG	8
12,000 TO 14,000 LBS	2-36" LONG	9

GROSS WEIGHT PER TRANSPORTER	SIDE BLOCKING (DOUBLED)	NO. NAILS PER LAYER
0 TO 2,500 LBS	1-18" LONG	5
2,500 TO 4,000 LBS	1-24" LONG	6
4,000 TO 6,000 LBS	1-30" LONG	8
OVER 6,000 LBS	1-36" LONG	9

SEE GENERAL NOTE "L" ON PAGE 2.

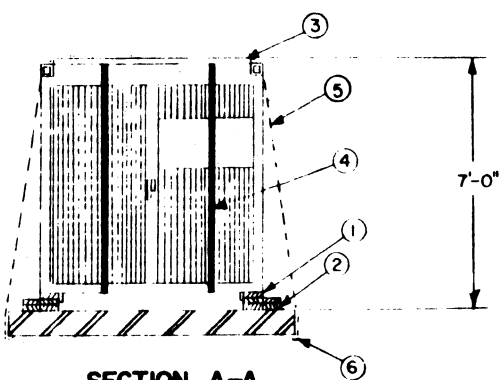


FOR SHIPMENT OF AN ODD NUMBER OF TYPE 1 TRANSPORTERS OR A MIXED LOAD OF TYPE 1 AND 2 TRANSPORTERS, SEE DETAILS ON PAGE 6.

**KEY NUMBERS**

- ① 2" X 6" X 36" (TRIPLED) (4 REQD). NAIL FIRST PIECE TO TRAILER FLOOR W/9-12d NAILS. NAIL EACH ADDITIONAL PIECE W/9-20d NAILS. SEE CHART "A", ABOVE.
- ② 2" X 6" X 18" (DOUBLED) (16 REQD). NAIL FIRST PIECE TO TRAILER FLOOR W/5-12d NAILS. NAIL EACH ADDITIONAL PIECE IN LIKE MANNER, SEE CHART "C" ABOVE FOR SIDE BLOCKING REQUIRED ACCORDING TO LOADED TRANSPORTER WEIGHT.
- ③ STRAPPING BOARD, 2" X 6" X 66-1/2" (8 REQD).
- ④ STEEL STRAPPING, 1-1/4" X .035" X 31'-0" (8 REQD). UNITIZE TWO ADJACENT CONTAINERS. SEE GENERAL NOTE "N" ON PAGE 2.
- ⑤ STEEL STRAPPING 2" X .050" X 29'-0" (8 REQD). STAPLE TO ③) W/4-2" STAPLES. SEE GENERAL NOTE "L", PAGE 2.
- ⑥ PAD, 2" X .050" STRAP 18" LONG (16 REQD). POSITION UNDER AND SEAL TO ⑤). SEE DETAIL "A", PAGE 2.  
ALT: STAKE POCKET PROTECTOR, (32 REQD). USE TWO (2) UNDER EACH ANCHOR POINT WITH PIECE MARKED ⑤). SEE "DETAIL B" ON PAGE 2.

**ISOMETRIC VIEW**



**SECTION A-A**

⑦ WEIGHT OF TRUCK LOAD SHOWN WAS COMPUTED BY USING 700 POUNDS COMMODITY WEIGHT PER TRANSPORTER. THE NUMBER OF TRANSPORTERS THAT MAY BE SHIPPED PER VEHICLE AND THE GROSS WEIGHT OF THE LOAD WILL DEPEND UPON THE WEIGHT OF THE COMMODITIES BEING SHIPPED. SEE GENERAL NOTES "F" AND "G", PAGE 2. FOR A LOAD GREATER THAN 14,000 POUNDS, USE FLOORLINE BLOCKING METHOD SHOWN ON PAGE 4.

LUMBER	LINEAR FEET	BOARD FEET
2" X 6"	129	129
NAILS	NO. REQD	POUNDS
12d(3-1/4")	196	3-1/4
20d(4")	72	2-3/4
STEEL STRAPPING, 1-1/4" X .035" - 248' REQD - 36 LBS		
STEEL STRAPPING, 2" X .050" - 232' REQD - 78 LBS		
STAPLES FOR 2" STRAPPING ----- 32 REQD		

**LOAD AS SHOWN**

ITEM	QUANTITY	WEIGHT (APPROX)
TYPE 1 CARGO TRANSPORTER	8	14,000 LBS SEE NOTE "G"
DUNNAGE		443 LBS
<b>TOTAL WEIGHT</b>		<b>14,443 LBS (APPROX)</b>

**8-UNIT LOAD ON A 40'-0" LONG BY 8'-0" WIDE TRAILER (TYPE 1 CARGO TRANSPORTER)**

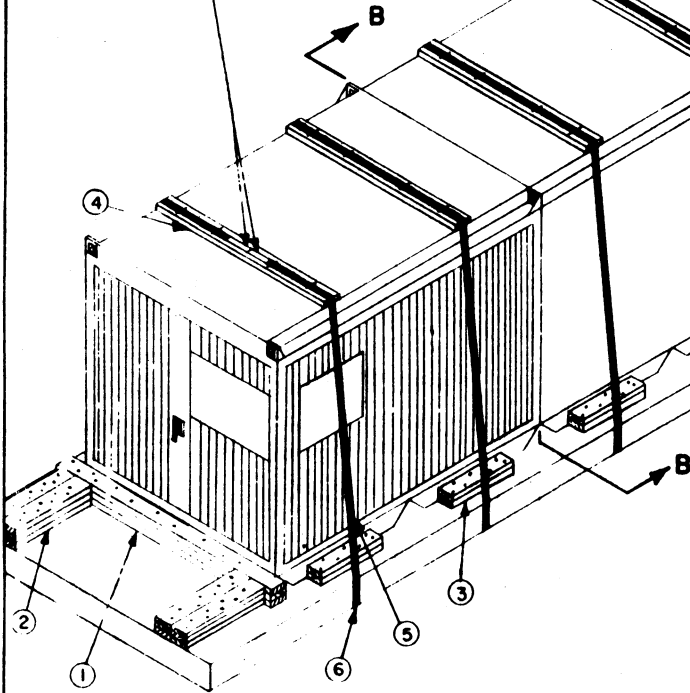
### CHART "B"

MAX GROSS WT.	NO. BACKUPS (TRIPLED)	NO. NAILS/LAYER
0 TO 10,000 LBS	2 - 18" LONG	5
10,000 TO 20,000 LBS	4 - 18" LONG	5
20,000 TO 24,000 LBS	4 - 24" LONG	6
24,000 TO 28,000 LBS	4 - 30" LONG	8
28,000 TO 30,000 LBS	6 - 18" LONG	5
30,000 TO 36,000 LBS	6 - 24" LONG	6
36,000 TO 42,000 LBS	6 - 30" LONG	8

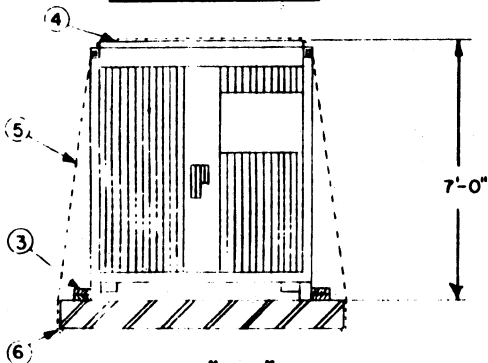
### CHART "D"

GROSS WEIGHT PER TRANSPORTER	SIDE BLOCKING (DOUBLED)	NO. NAILS PER LAYER
0 TO 5,000 LBS	2-18" LONG	5
5,000 TO 8,000 LBS	2-24" LONG	6
OVER 8,000 LBS	2-30" LONG	8

SEE GENERAL NOTE "L", PAGE 2.



### ISOMETRIC VIEW



### SECTION "B-B"

### KEY NUMBERS

- ① 2" X 6" X 7'-0" (TRIPLED) (2 REQD). NAIL FIRST PIECE TO TRAILER FLOOR W/1-12d NAIL EVERY 8". NAIL EACH ADDITIONAL PIECE W/1-20d NAIL EVERY 8".
- ② 2" X 6" X 30" (TRIPLED) (8 REQD). NAIL FIRST PIECE TO TRAILER FLOOR W/8-12d NAILS. NAIL EACH ADDITIONAL PIECE W/8-20d NAILS. SEE CHART "B" ABOVE, AND DETAIL "C", BELOW, FOR BACKUP REQUIREMENTS FOR LOAD WEIGHTS OTHER THAN SHOWN.
- ③ 2" X 6" X 24" (DOUBLED) (16 REQD). NAIL FIRST PIECE TO FLOOR W/6-12d NAILS. NAIL EACH ADDITIONAL PIECE IN LIKE MANNER. SEE CHART "D" ABOVE FOR SIDE BLOCKING REQUIRED ACCORDING TO LOADED TRANSPORTER WEIGHT.
- ④ STRAPPING BOARD, 2" X 6" X 66-1/2" (8 REQD).
- ⑤ STEEL STRAPPING, 2" X .050" X 29'-0" (8 REQD). STAPLE TO ④ W/4-2" STAPLES. SEE GENERAL NOTE "L", PAGE 2.
- ⑥ PAD, 2" X .050" STRAP 18" LONG (16 REQD). POSITION UNDER AND SEAL TO ⑤. SEE DETAIL "A", PAGE 2.  
ALT: STAKE POCKET PROTECTOR (32 REQD). USE TWO (2) UNDER EACH ANCHOR POINT WITH PIECE MARKED ⑤. SEE "DETAIL B" ON PAGE 2.

### BILL OF MATERIAL

LUMBER	LINEAR FEET	BOARD FEET
2" X 6"	211	211
NAILS	NO. REQD	POUNDS
12d (3-1/4")	218	3-1/2
20d (4")	116	4

STRAPPING, STEEL, 2" X .050" - 232' REQD - 78 LBS  
STAPLES FOR 2" STRAPPING - 32 REQD

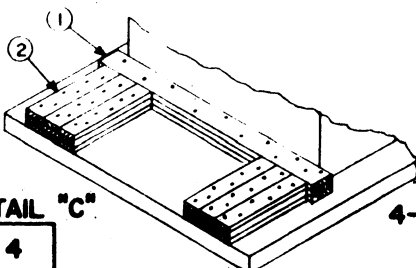
\* WEIGHT OF TRUCKLOAD SHOWN WAS COMPUTED BY USING 5,570 POUNDS COMMODITY WEIGHT PER TRANSPORTER. THE NUMBER OF TRANSPORTERS THAT MAY BE SHIPPED PER VEHICLE AND THE GROSS WEIGHT OF THE LOAD WILL DEPEND UPON THE WEIGHT OF THE COMMODITIES BEING SHIPPED. SEE GENERAL NOTE "F", PAGE 2. FOR A LOAD LESS THAN 14,000 POUNDS FLOORLINE BLOCKING METHOD SHOWN ON PAGE 3. MAY BE USED.

### LOAD AS SHOWN

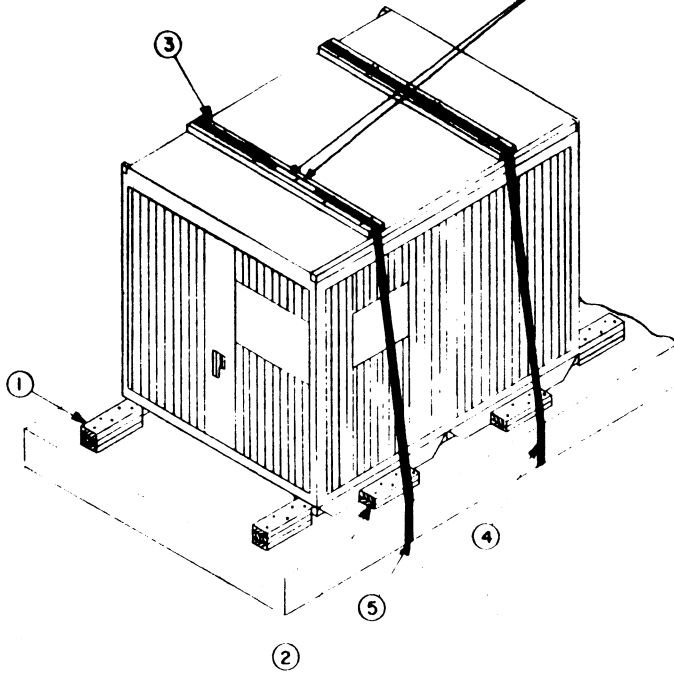
ITEM	QUANTITY	WEIGHT (APPROX)
TYPE 2 CARGO TRANSPORTER	4	28,000 LBS SEE NOTE "*"
DUNNAGE		614 LBS
TOTAL WEIGHT		28,614 LBS (APPROX)

4-UNIT LOAD ON A 40'-0" LONG BY 8'-0" WIDE TRAILER (TYPE 2 CARGO TRANSPORTER)

### DETAIL "C"



SEE GENERAL NOTE "L", PAGE 2.

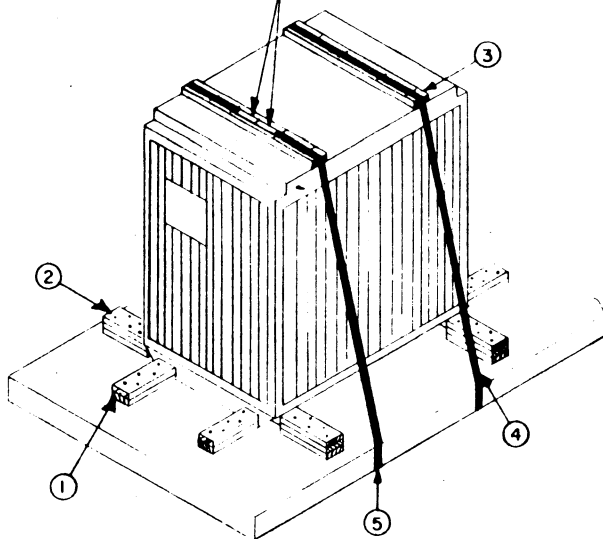


**ISOMETRIC VIEW**

**KEY NUMBERS**

- ① 2" X 6" X 18" (TRIPLED) (4 REQD). NAIL FIRST PIECE TO TRAILER FLOOR W/5-12d NAILS. NAIL EACH ADDITIONAL PIECE W/5-20d NAILS.
- ② 2" X 6" X 18" (DOUBLED) (4 REQD). NAIL FIRST PIECE TO TRAILER FLOOR W/5-12d NAILS. NAIL SECOND PIECE TO FIRST IN LIKE MANNER.
- ③ STRAPPING BOARD, 2" X 6" X 66-1/2" (2 REQD).
- ④ STEEL STRAPPING, 2" X .050" X 27'-0" (2 REQD). STAPLE TO ③ W/4-2" STAPLES. SEE GENERAL NOTE "L", PAGE 2.
- ⑤ PAD, 2" X .050" STRAP 18" LONG (4 REQD). POSITION UNDER AND SEAL TO ④. SEE DETAIL "A", PAGE 2.  
ALT: STAKE POCKET PROTECTOR (8 REQD). USE TWO (2) UNDER EACH ANCHOR POINT WITH PIECE MARKED ④. SEE "DETAIL B" ON PAGE 2.

SEE GENERAL NOTE "L", PAGE 2.

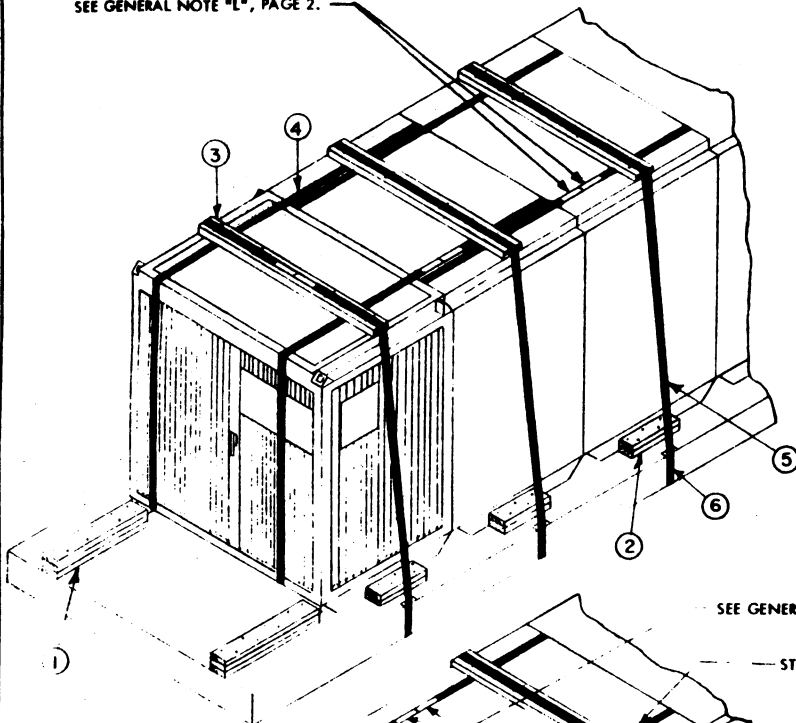


**ISOMETRIC VIEW**

**KEY NUMBERS**

- ① 2" X 6" X 18" (DOUBLED) (4 REQD). NAIL FIRST PIECE TO TRAILER FLOOR W/5-12d NAILS. NAIL SECOND PIECE TO FIRST W/5-20d NAILS.
- ② 2" X 6" X 18" (TRIPLED) (4 REQD). NAIL FIRST PIECE TO TRAILER FLOOR W/5-12d NAILS. NAIL EACH ADDITIONAL PIECE IN LIKE MANNER.
- ③ STRAPPING BOARD, 2" X 6" X 50-1/2" (2 REQD).
- ④ STEEL STRAPPING, 2" X .050" X 25'-0" (2 REQD). STAPLE TO ③ W/4-2" STAPLES. SEE GENERAL NOTE "L", PAGE 2.
- ⑤ PAD, 2" X .050" STRAP 18" LONG (4 REQD). POSITION UNDER AND SEAL TO ④. SEE DETAIL "A", PAGE 2.  
ALT: STAKE POCKET PROTECTOR (8 REQD). USE TWO (2) UNDER EACH ANCHOR POINT WITH PIECE MARKED ④. SEE "DETAIL B" ON PAGE 2.

SEE GENERAL NOTE "L", PAGE 2.



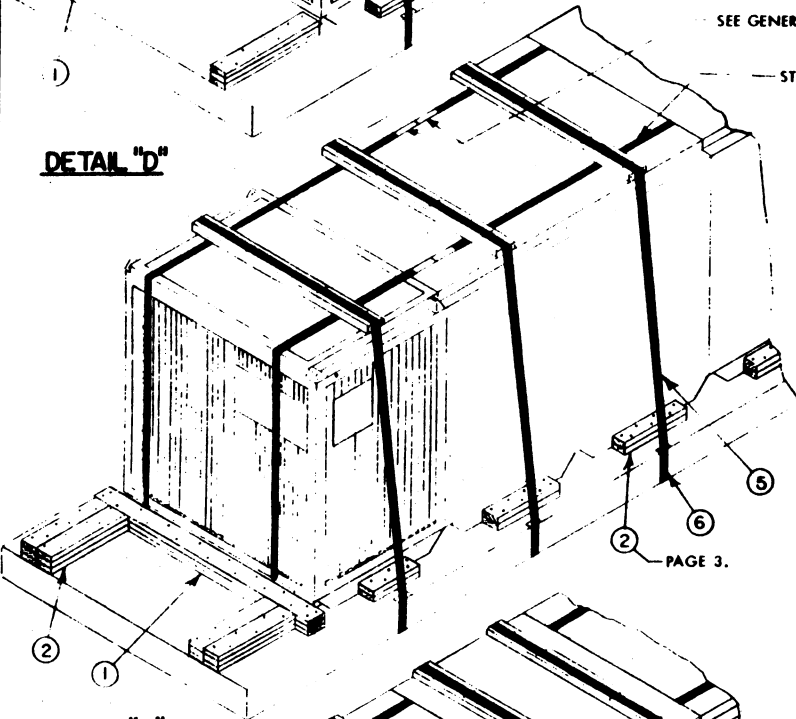
**NOTE (DETAIL "D"):**

METHOD OF UNITIZING AN INDIVIDUAL TYPE 1 TRANSPORTER TO AN ADJACENT TYPE 1 UNITIZED UNIT AND SECURING TO TRAILER. KEY NUMBERS SHOWN ARE APPLICABLE TO PAGE 3.

SEE GENERAL NOTE "L", PAGE 2.

— STEEL STRAPPING, 1-1/4" X .035" X 41'-0" (2 REQD).

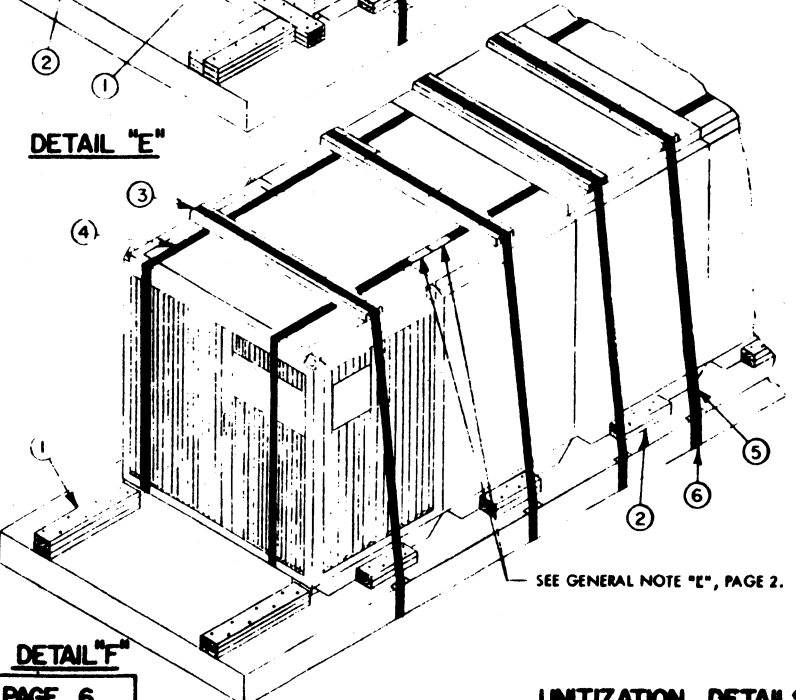
**DETAIL "D"**



**NOTE (DETAIL "E"):**

METHOD OF UNITIZING AN INDIVIDUAL TYPE 1 TRANSPORTER TO AN ADJACENT TYPE 2 TRANSPORTER AND SECURING TO TRAILER. KEY NUMBERS SHOWN ARE APPLICABLE TO PAGE 4, EXCEPT AS INDICATED.

**DETAIL "E"**



**NOTE (DETAIL "F"):**

ALTERNATE METHOD OF SECURING AN INDIVIDUAL TYPE 1 TRANSPORTER TO TRAILER. KEY NUMBERS SHOWN ARE APPLICABLE TO PAGE 3.

**DETAILS**

A TYPE 1 TRANSPORTER NOT UNITIZED TO AN ADJACENT TRANSPORTER MUST BE SECURED TO TRAILER W/2-2" STEEL STRAPS AS SHOWN IN DETAIL "F".

**DETAIL "F"**