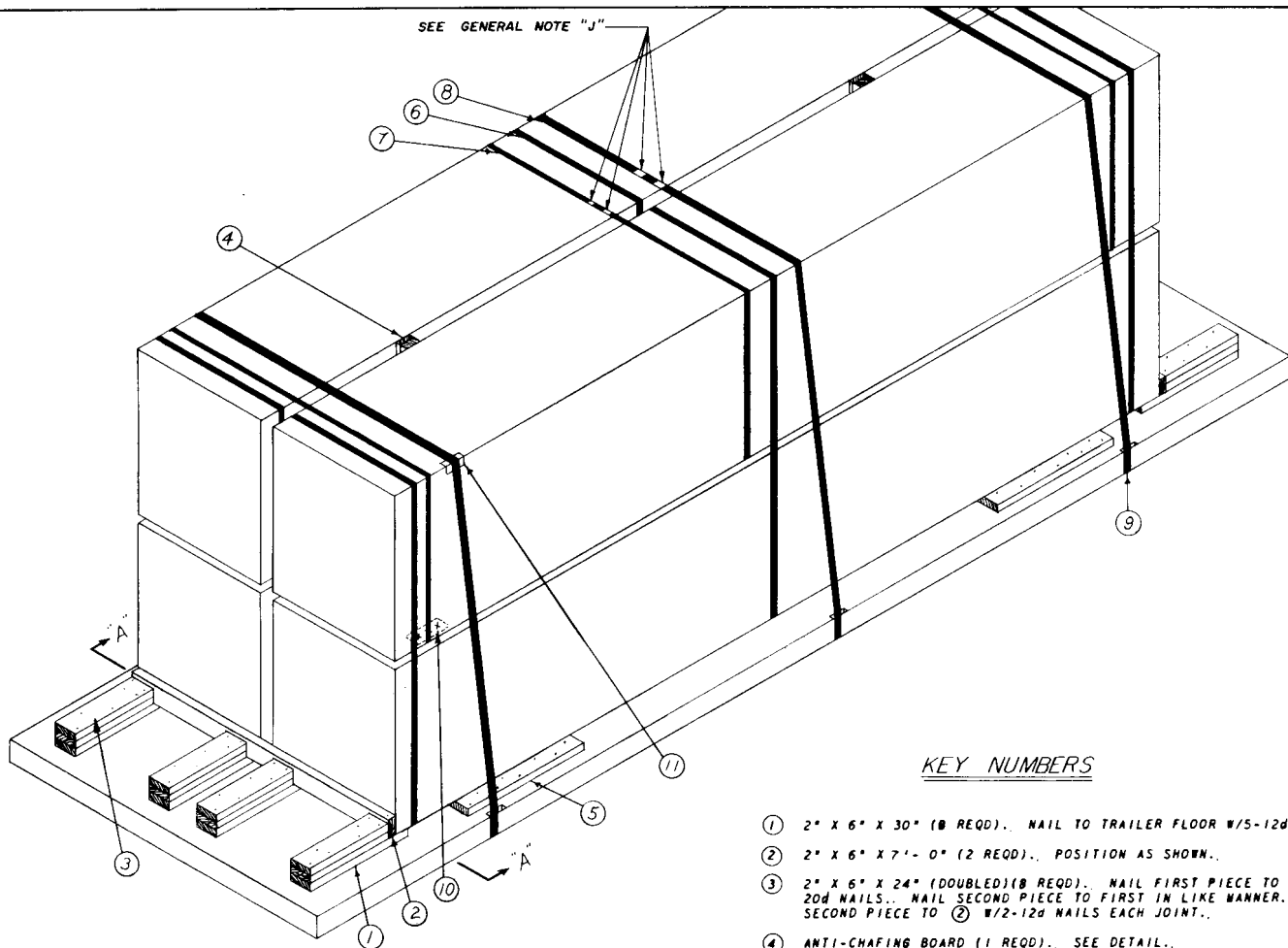


**LOADING & BRACING (TL & LTL) ON FLAT BED TRAILER OF  
ROCKET MOTOR, XM66, WITH FOUR FINS, XM17, PACKED IN  
LUMBER OR PLYWOOD SHEATHED CONTAINER, FOR THE  
762MM ROCKET**

<small>DRAFTSMAN</small> <i>K.S.J.</i>	<small>TRACER</small>	<small>ENGINEER</small> <i>DIW / BOB</i>	<small>SUBMITTED</small> <i>H.F. McWainy</i>
<small>CHECKER</small> <i>RHA / GWP</i>	<small>CHECKER</small> <i>[Signature]</i>	<small>ENGINEER</small> <i>[Signature]</i>	<small>COLONEL</small> <small>ORD. CORPS</small> <small>U.S.A.</small>
<b>REVISIONS</b>			<small>EXAMINED</small> <i>[Signature]</i>
1	7-24-62	<i>K.S.J.</i> <i>GWP</i> <i>[Signature]</i>	<small>ORD. CORPS</small> <small>U.S.A.</small>
			<small>APPROVED BY ORDER OF THE CHIEF OF ORDNANCE</small> <i>[Signature]</i>
			<small>ORD. CORPS</small> <small>U.S.A.</small>
			<b>ORDNANCE CORPS U.S.A.</b>
			<b>28 FEB 1962</b>
			<small>CLASS</small> <small>DIVISION</small> <small>DRAWING</small> <small>FILE</small>
			<b>19 48 5624 GM IIA105</b>

GM-367-61

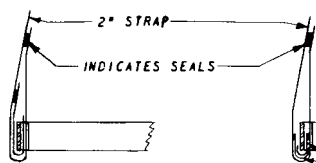
SEE GENERAL NOTE "J"



ISOMETRIC VIEW

KEY NUMBERS

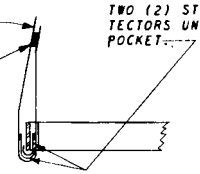
- ① 2" X 6" X 30" (8 REQD).. NAIL TO TRAILER FLOOR W/5-12d NAILS.
- ② 2" X 6" X 7'-0" (2 REQD).. POSITION AS SHOWN.
- ③ 2" X 6" X 24" (DOUBLED)(8 REQD).. NAIL FIRST PIECE TO ① W/5-20d NAILS.. NAIL SECOND PIECE TO FIRST IN LIKE MANNER.. TOENAIL SECOND PIECE TO ② W/2-12d NAILS EACH JOINT.
- ④ ANTI-CHAFING BOARD (1 REQD).. SEE DETAIL..
- ⑤ 2" X 6" X 36" (4 REQD).. NAIL TO TRAILER FLOOR W/8-12d NAILS.
- ⑥ STEEL STRAPPING, 1 1/2" X .035" X 22'-6" (6 REQD).
- ⑦ STEEL STRAPPING, 1 1/2" X .035" X 22'-0" (3 REQD)..
- ⑧ STEEL STRAPPING, 2" X .050" X 27'-0" (3 REQD)..
- ⑨ PAD, 2" X .050" STRAP 18" LONG.. POSITION UNDER AND SEAL TO ⑧.. SEE DETAIL "A" (6 REQD)..  
ALTERNATE: SIGNODE NO. 1 STAKE POCKET PROTECTORS.. TWO (2) USED UNDER EACH STAKE POCKET WITH ⑧.. SEE DETAIL "B" (12 REQD)..
- ⑩ ANTI-SKID PLATES (12 REQD).. POSITION UNDER EACH SKID OF CONTAINERS IN SECOND LAYER.. (6 REQD PER CONTAINER).. SEE GENERAL NOTE "6"..
- ⑪ EDGE PROTECTORS FOR 2" STRAPPING (6 REQD).. SEE GENERAL NOTE "H"..



DETAIL "A"

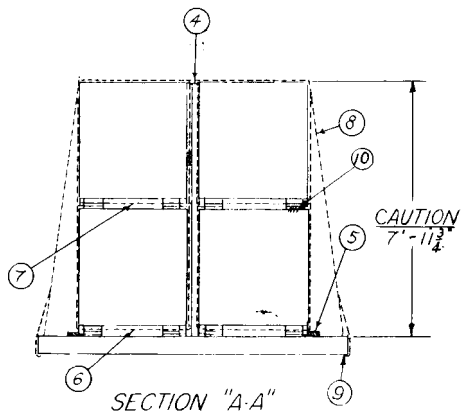
METHOD OF THREADING STRAP AND PAD AT STAKE POCKET..

TWO (2) STAKE POCKET PROTECTORS UNDER EACH STAKE POCKET..

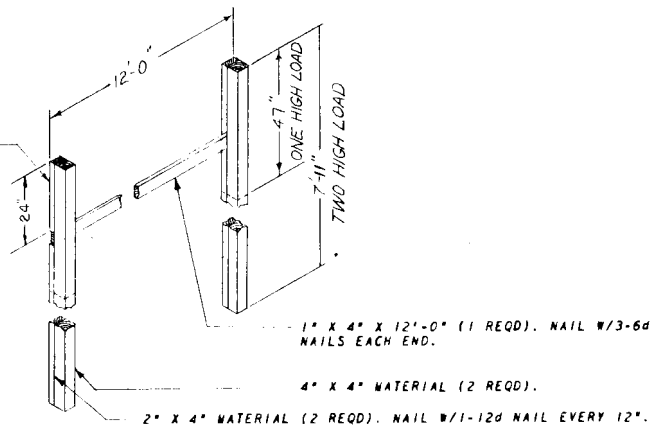


DETAIL "B"

METHOD OF INSTALLING STAKE POCKET PROTECTORS (ALT PAD)..



SECTION "A-A"



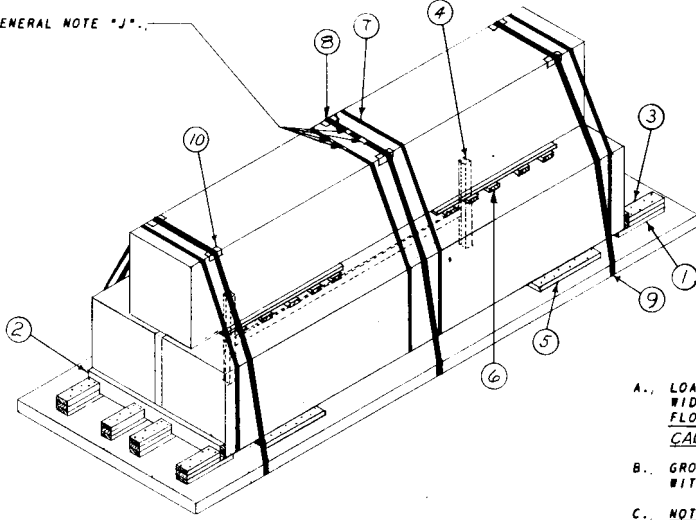
ANTI-CHAFING BOARD

(1 REQD)

REVISION NO. 1  
*d. J. Grasmuck*  
 DATE 8/8/62 INSPECTOR

APPROVED  
 BUREAU OF EXPLOSIVES  
*d. J. Grasmuck*  
 DATE 8/16/61 INSPECTOR

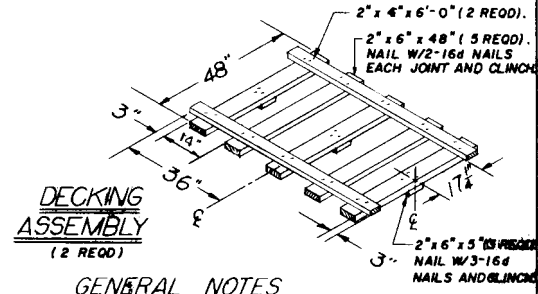
SEE GENERAL NOTE "J".



TYPICAL LTL

KEY NUMBERS (LTL)

- ① 2" X 6" X 30" (8 REQD).. NAIL TO TRAILER FLOOR W/5-12d NAILS..
- ② 2" X 6" X 7'-10" (2 REQD).. POSITION AS SHOWN..
- ③ 2" X 6" X 24" (DOUBLED) (8 REQD).. NAIL FIRST PIECE TO ① W/5-20d NAILS.. NAIL SECOND PIECE TO FIRST IN LIKE MANNER.. TOENAIL SECOND PIECE TO ② W/2-12d NAILS EACH JOINT..
- ④ ANTI-CHAFING BOARD (1 REQD).. SEE DETAIL..
- ⑤ 2" X 6" X 36" (4 REQD).. NAIL TO TRAILER FLOOR W/8-12d NAILS..
- ⑥ DECKING ASSEMBLY (2 REQD).. SEE DETAIL.. SEE NOTE \*  
STEEL STRAPPING.. 1 1/2" X .035" X 28'-0" (4 REQD)..
- ⑦ STEEL STRAPPING.. 2" X .050" X 26'-0" (3 REQD)..
- ⑧ PAD.. 2" X .050" STRAP 18" LONG.. POSITION UNDER AND SEAL TO ⑦.. SEE DETAIL "A" (6 REQD)..  
ALTERNATE: SIGNODE NO. 1 STAKE POCKET PROTECTORS. TWO (2) USED UNDER EACH STAKE POCKET WITH ⑦  
SEE DETAIL "B" (12 REQD)..
- ⑨ EDGE-PROTECTORS FOR 2" STRAPPING (6 REQD) SEE GENERAL NOTE "H" FOR



GENERAL NOTES

- A.. LOAD AS SHOWN IS BASED ON FLAT BED TRAILER 25'-0" LONG X 8'-0" WIDE WITH WOOD OR WOOD AND METAL FLOOR.. TRAILERS WITH ALL METAL FLOORS WILL NOT BE USED.  
**CAUTION:** LADING HEIGHT - 7'-11 1/2" FOUR UNIT LOAD.  
8'-1-1/2" THREE UNIT LOAD.
- B.. GROSS WEIGHT AND AXLE DISTRIBUTION OF WEIGHT WILL BE IN ACCORDANCE WITH PAR. B346.A, ORDM 3-4, VOL 3..
- C.. NOTICE: SHIPMENTS WILL BE POSITIONED ON THE TRAILER CONSISTENT WITH STATE WEIGHT LAWS. THE NUMBER OF UNITS MAY BE ADJUSTED TO FIT THE QUANTITY TO BE SHIPPED; HOWEVER, THE APPROVED METHODS CONTAINED HEREIN FOR FULL OR PARTIAL TRUCKLOAD MUST BE FOLLOWED FOR BLOCKING, BRACING AND STAYING OF THIS ITEM..
- D.. SELECTION OF VEHICLE TO BE USED TO TRANSPORT GUIDED MISSILE AMMUNITION AND/OR COMPONENTS THEREOF, MUST COMPLY WITH AR 55-355, CHAPTER 213, FOR EXPLOSIVES OR OTHER DANGEROUS ARTICLES, IN FULL..
- E.. FOR DETAIL OF CONTAINER SEE DRAWING NO. F-8026321.. CONTAINER DIMENSIONS - 235" LONG X 42 1/2" WIDE X 49" HIGH.. GROSS WEIGHT - 5,028 POUNDS (APPROX)..
- F.. LADING WILL NOT BE SECURED BY CHAINS AND/OR LOAD BINDERS IN LIEU OF SPECIFIED DUNNAGE MATERIAL..
- G.. THE WORDS "ANTI-SKID PLATES" WILL BE STENCILED IN ONE INCH (1") LETTERS ON ALL CONTAINERS TO SHOW THE LOCATION OF THESE PLATES..
- H.. IF EDGE PROTECTORS FOR 2" STRAPPING ARE NOT COMMERCIALY AVAILABLE, THEY MAY BE FORMED FROM 18 (MIN) GAGE SHEET STEEL 9" LONG X 6" WIDE.
- J.. ALL 2" STRAPPING APPLIED IN TWO (2) PIECES AND ALL 1 1/2" STRAPPING WILL BE SEALED WITH TWO (2) SEALS AND TWO (2) CRIMPS PER SEAL..
- K.. THIS ITEM IS AN ICC CLASS "A" EXPLOSIVE.. PROCEDURES SHOWN HEREIN ARE APPLICABLE FOR THE SHIPMENT OF CONTAINERS WITH EMPTY OR PRACTICE MOTORS AND OF EMPTY CONTAINERS.

NOTE \*

ONLY REQUIRED WHEN SHIPPING A THREE (3) UNIT LOAD WITH PLY-WOOD SHEATHED CONTAINER(S) IN BOTTOM LAYER. IF LUMBER SHEATHED CONTAINERS MAKE UP THE BOTTOM LAYER, USE ANTI-SKID PLATES UNDER EACH SKID OF SECOND LAYER CONTAINER, 6 REQUIRED PER CONTAINER.

LOAD AS SHOWN

ITEM	QUANTITY	WEIGHT
ROCKET MOTOR, XM66	4	20,096 LBS. (APPROX)
DUNNAGE		354 LBS.
<b>TOTAL WEIGHT</b>		<b>20,450 LBS.</b>

LUMBER	LINEAL FEET	BOARD FEET
1" X 4"	12	4
2" X 4"	16	11
2" X 6"	79	79
4" X 4"	16	22
NAILS	NO. REQD	POUNDS
6d (2")	6	--
12d (3-1/4")	104	1 1/2
20d (4")	80	3

STRAPPING, STEEL, 1 1/2" X .035"	-	201' REQD - 29 LBS
STRAPPING, STEEL, 2" X .050"	-	91' REQD - 27 LBS
ANTI-SKID PLATES	-	12 REQD - 3 LBS
EDGE PROTECTORS	-	6 REQD - 2 LBS

MATERIAL SPECIFICATIONS

LUMBER: SEE PARAGRAPH B400, ORDM 3-4, VOL 3..  
 NAILS: COMMON, CEMENT COATED, FED SPEC FF-N-105..  
 ALT: ANNULAR-RING TYPE NAIL OF SAME SIZE..  
 STRAPPING, STEEL: TYPE 1, CLASS "A" OR "C", FED SPEC QQ-S-781..  
 FOR FSN SEE S6-39-100..  
 ANTI-SKID PLATES: SIGNODE NO. 1 OR EQUAL..

DO NOT SCALE

LOADING & BRACING (TL & LTL) ON FLAT BED TRAILER OF ROCKET MOTOR, XM66, WITH FOUR FINS, XM17, PACKED IN LUMBER OR PLYWOOD SHEATHED CONTAINER, FOR THE 762MM ROCKET

DRAFTSMAN <i>K.S.J.</i>	TRACER	ENGINEER <i>DIW/BGB</i>	SUBMITTED
CHECKER <i>RHA/GWP</i>	CHECKER <i>[Signature]</i>	ENGINEER <i>[Signature]</i>	EXAMINED <i>[Signature]</i> COLONEL ORDN CORPS U.S.A.
REVISIONS			APPROVED BY ORDER OF THE CHIEF OF ORDNANCE <i>[Signature]</i> ORDN CORPS U.S.A.
1	7-24-62	<i>[Signature]</i>	ORDNANCE CORPS U.S.A.
<b>28 FEB 1962</b>			
CLASS	DIVISION	DRAWING	FILE
19	48	5624	GM IIA105

