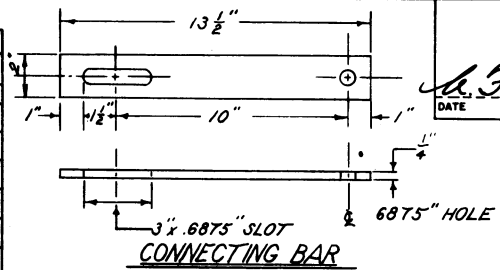
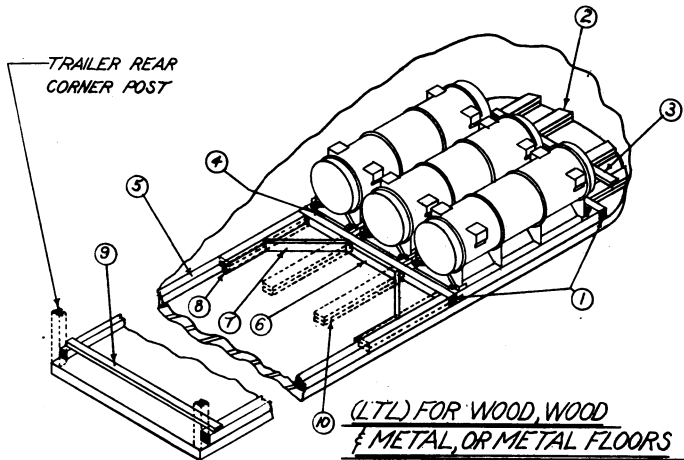


| LIST OF PARTS PER STACK (2 CNTRS) | | | | | | | | |
|-----------------------------------|-----------------|---------|-------------------|------------------|---------------------------|--------------|------------------|--------------|
| LINE NO | NAME OF PART | NO REQD | PC MK ORD PART NO | MATERIAL | | | | REMARKS |
| | | | | SIZE OR FORM | KIND | GRADE | SPEC NO (DWG NO) | |
| 1 | SCREW, CAP | 8 | 225810 | 5/8" x 2" UNF-2A | STEEL, ALLOY | | BUBX31 | PLAIN FINISH |
| 2 | NUT, CASTLE | 8 | 218468 | 5/8" UNF-2B | STEEL, ALLOY | | BUBX11 | PLAIN FINISH |
| 3 | WASHER | 8 | 221440 | 5/8" | STEEL CORROSION RESISTANT | LIGHT SERIES | BEBX1 | PLAIN |
| 4 | PIN, COTTER | 8 | 530482 | 1/8" x 2" | STEEL CORROSION RESISTANT | | BFA3.1 | SPLIT* |
| 5 | BAR, CONNECTING | 4 | | 2 1/4" x 1 1/2" | STEEL, NOT ROLLED | WD1010 | 5T-136 | |

* ALTERNATE: DOUBLE "LOCK NUTS" MAY BE SUBSTITUTED FOR CASTLE NUTS AND COTTER PINS.



APPROVED BUREAU OF EXPLOSIVES
A. J. Dragomuck
 DATE 2/17/58 INSPECTOR



- KEY NUMBERS (LTL)**
- 4" x 4" TRAILER WIDTH (INSIDE) (2 REQD) POSITION AS SHOWN.
 - 2 1/2" x 6" CUT TO FIT (DOUBLED) (4 REQD) NAIL TOGETHER W/1-10d NAIL EVERY 6" POSITION AS SHOWN & TO NAIL TO ① W/3-12d NAILS EACH.
 - 2 1/2" x 4" CUT TO FIT (1 REQD) NAIL TO ② W/3-10d NAILS EACH JOINT.
 - 2 1/2" x 4" APPROX. (6 REQD) POSITION BETWEEN SKIDS IN FRONT & REAR OF CONTAINER. NAIL TO ① W/4-10d NAILS EACH.
 - 4" x 4" TO EXTEND TO TRAILER REAR CORNER POST (2 REQD) POSITION AS SHOWN & TO NAIL TO ① W/3-12d NAILS EACH. (METAL FLOORS ONLY)
 - 2 1/2" x 3" (1 REQD) NAIL TO ① W/6-12d NAILS. (METAL FLOOR ONLY)
 - 2 1/2" x 4" x 45" DOUBLE BEVELED EACH END. (2 REQD) NAIL TO PCS. ① & ⑤ W/3-12d NAILS EACH END. (METAL FLOORS ONLY)
 - 2 1/2" x 4" x 2" (2 REQD) NAIL TO ⑤ W/4-12d NAILS EACH. (METAL FLOORS ONLY)
 - 2 1/2" x 4" TRAILER WIDTH (INSIDE) (3 REQD) NAIL TO ⑤ W/3-10d NAILS EACH END. (METAL FLOORS ONLY)
 - WHEN LOADING IN TRAILERS W/ WOOD OR WOOD & METAL FLOORS USE 2 1/2" x 6" x 4" (DOUBLED) BACK-UP CLEATS AS SHOWN IN DOTTED LINES. (4 REQD) OMIT REAR PCS. ③, ⑥, ⑦, ⑧, & ⑨. NAIL LOWER 2" x 6" TO FLOOR W/6-10d NAILS. NAIL UPPER PC. TO LOWER IN LIKE MANNER.

NOTE:
 EACH GROUP OF TWO (2) CONTAINERS REQUIRES:
 1. FOUR (4) CONNECTING BARS SECURED IN PLACE BY:
 EIGHT (8) BOLTS 5/8" DIA (SEE LIST OF PARTS)
 EIGHT (8) NUTS (SEE LIST OF PARTS)

NOTE:
 HOLES MAY BE BURNED THRU CONNECTING BAR THEN ENLARGED TO .6875" WITH A BRIDGE TYPE REAMER.
 NB: LOCK WASHERS WILL NOT BE USED

GENERAL NOTES

- LOAD AS SHOWN IS BASED ON VAN TYPE TRAILERS HAVING INSIDE DIMENSIONS OF 30'-0" LONG x 7'-6" WIDE.
- SHIPMENTS WILL BE LOADED IN THE TRAILER, CONSISTANT WITH STATE WEIGHT LAWS. THE NUMBER OF UNITS MAY BE ADJUSTED TO FIT THE DIMENSIONS OF THE VEHICLE CONCERNED, OR THE QUANTITY TO BE SHIPPED; HOWEVER, THE APPROVED METHODS CONTAINED HEREIN, FOR FULL OR PARTIAL TRUCKLOAD, MUST BE FOLLOWED FOR BLOCKING, BRACING & STAYING OF THIS ITEM.
- GROSS WEIGHT AND AXLE DISTRIBUTION OF WEIGHT WILL BE IN ACCORDANCE WITH PARA 8346.4 OF ORDM 3-4, VOL. 3, DATED 1 JULY 1955.
- FOR DETAILS OF CONTAINER SEE DRAWING NO- , CONTAINER SIZE - 86 1/2" LONG x 28 1/2" WIDE x 33 1/2" HIGH, GROSS WEIGHT - 700 LBS.
- SELECTION OF VEHICLES USED OR TO BE USED TO TRANSPORT GUIDED MISSILE AMMUNITION AND/OR COMPONENTS THEREOF, MUST COMPLY WITH AR 55-225, DATED 4 OCTOBER 1955, SECTION II, PARA 13, THROUGH PARA 20 FOR EXPLOSIVES OR OTHER DANGEROUS ARTICLES IN FULL.
- IN EVENT THE TRAILER IS PROVIDED WITH AN INSTALLED BULKHEAD, ALL BLOCKING IN FRONT END OF TRAILER MAY BE OMITTED. POSITION CONTAINERS AGAINST FORWARD BULKHEAD.
- THE METHOD OF LOADING AS SHOWN MAY BE APPLIED TO TRAILERS WITH WOOD, WOOD & METAL, OR METAL FLOORS.

| BILL OF MATERIAL (TL) | | |
|---|-------------|------------|
| LUMBER | LINEAL FEET | BOARD FEET |
| 2" x 2" | 32 | 11 |
| 2" x 4" | 65 | 43 |
| 2" x 6" | 16 | 16 |
| 4" x 4" | 38 | 51 |
| NAILS | NO REQD | POUNDS |
| 10d | 356 | 5 1/2 |
| 16d | 8 | 1/8 |
| STRAPPING 1 1/2" x .035" - 408 FT - 62 LBS. | | |

MATERIAL SPECIFICATIONS

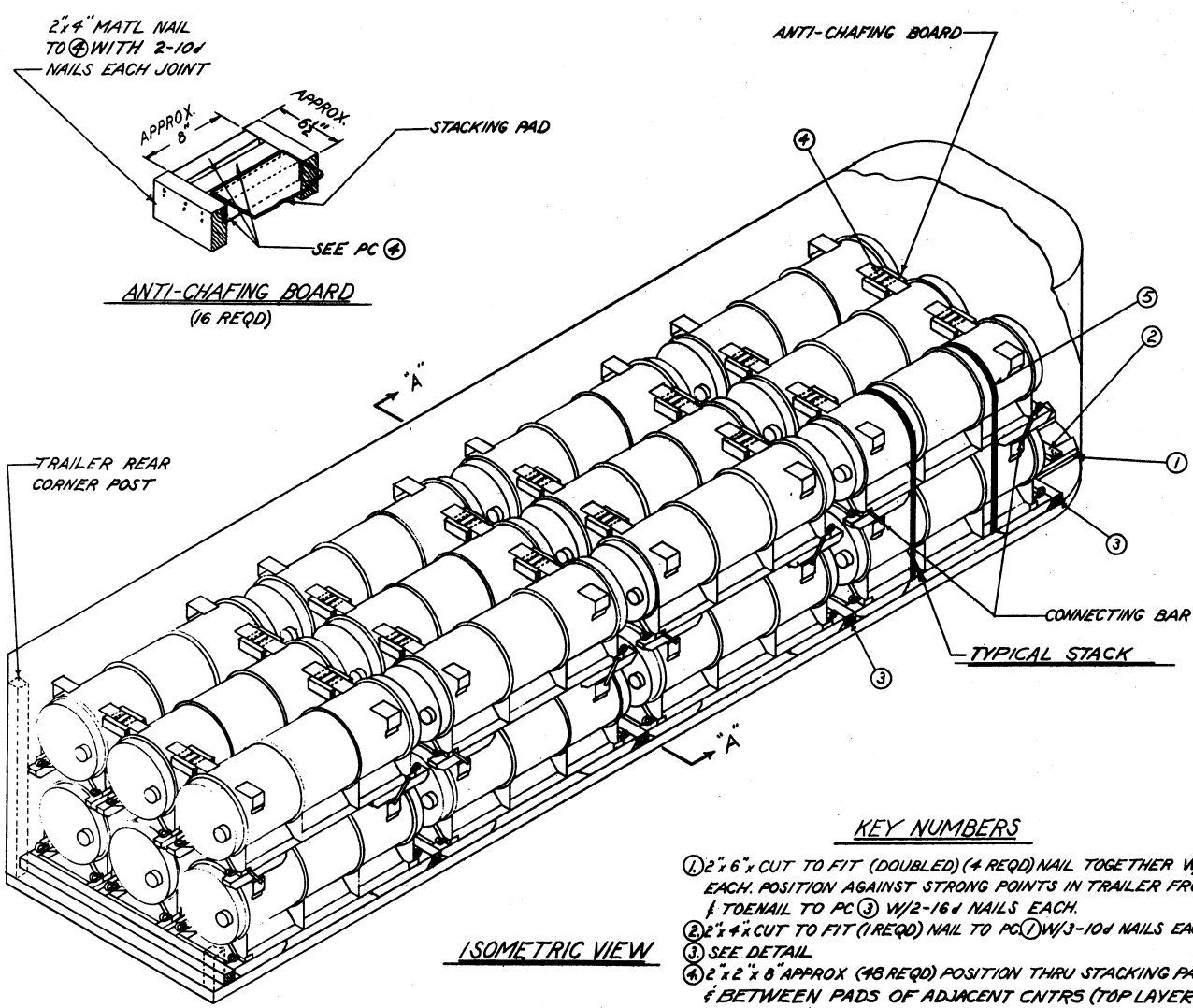
LUMBER: SEE PAR. 8400, ORDM 3-4, VOL. 3, DATED 1 JULY 1955.
 NAILS: COMMON CEMENT COATED, FED. SPEC. FF-N-105.
 ALT: ANNULAR-RING TYPE NAILS OF SAME SIZE.
 STRAPPING: TYPE 1, CLASS A ORC, FED. SPEC. QQ-S-781.

DO NOT SCALE

NO CNTRS 24 TOTAL WT (INCL. DUNNAGE) 17,221 LBS

TRUCKLOADING (TL & LTL) IN VAN TYPE TRAILER OF THE FORE SECTION FOR THE HAWK ANTI-AIRCRAFT GUIDED MISSILE

| | | | |
|---------------------------------------|-------------------------------|--------------------|---|
| DESIGNED BY G.B.F. | CHECKED E.R.J. | ENGINEER E.R.J. | SUBMITTED <i>W.P. Mante</i> |
| CHECKED E.R.J. | CHECKED <i>[Signature]</i> | ENGINEER | COLONEL ORDN. CORPS U.S.A. |
| REVISIONS | | | EXAMINED <i>Donald C. Koshin</i> ORDN. CORPS U.S.A. |
| | | | APPROVED BY ORDER OF THE CHIEF OF ORDNANCE <i>Angelo J. Derrante</i> ORDN. CORPS U.S.A. |
| ORDNANCE CORPS U.S.A. 5 MARCH 1958 | | | |
| CLASS | DIVISION | DRAWING | FILE |
| 19 | 48 | 5555 | GMIIA54 |

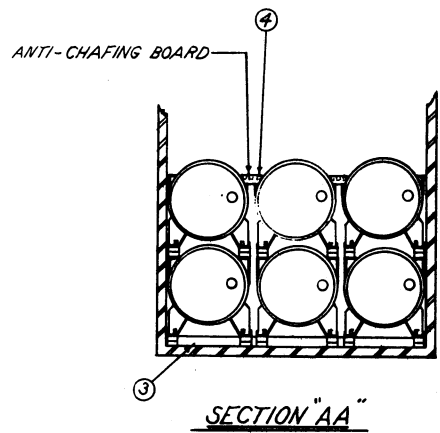


ANTI-CHAFING BOARD
(16 REQD)

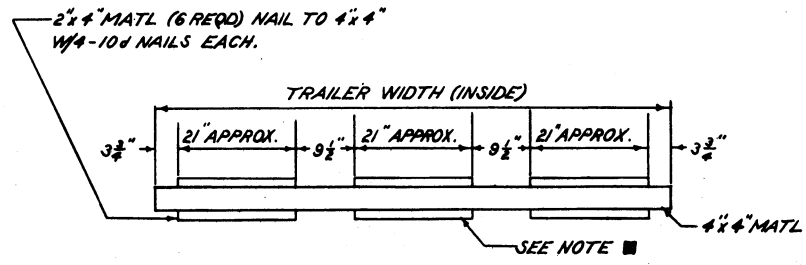
ISOMETRIC VIEW

KEY NUMBERS

- ① 2' 6" x CUT TO FIT (DOUBLED) (4 REQD) NAIL TOGETHER W/5-10d EACH. POSITION AGAINST STRONG POINTS IN TRAILER FRONT WALL & TO NAIL TO PC ③ W/2-16d NAILS EACH.
- ② 2' 4" x CUT TO FIT (1 REQD) NAIL TO PC ① W/3-10d NAILS EACH JOINT.
- ③ SEE DETAIL
- ④ 2' x 2' x 8' APPROX (48 REQD) POSITION THRU STACKING PADS & BETWEEN PADS OF ADJACENT CNTRS (TOP LAYER OF LOAD, ONLY) (SEE DETAIL - ANTI-CHAFING BOARD)
- ⑤ 1 1/2" x .035 STEEL STRAP x 17'-0" APPROX. 2/STACK (24 REQD)



SECTION "AA"



PC. MK. 3
(5 REQD)

NOTE ■:
PIECE MARK ③ USED AT FRONT AND REAR OF TRAILER WILL REQUIRE OMISSION OF 2' x 4" BLOCKS FROM ONE SIDE.