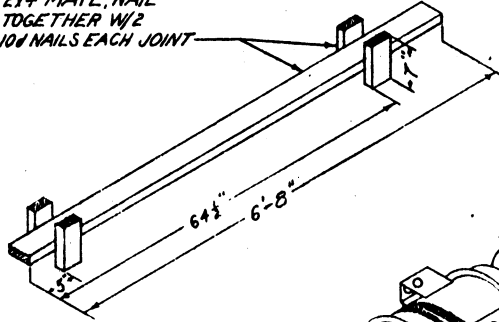


TRUCKLOADING (TL & LTL) ON FLATBED TRAILER OF THE FORE SECTION FOR THE HAWK ANTI-AIRCRAFT GUIDED MISSILE

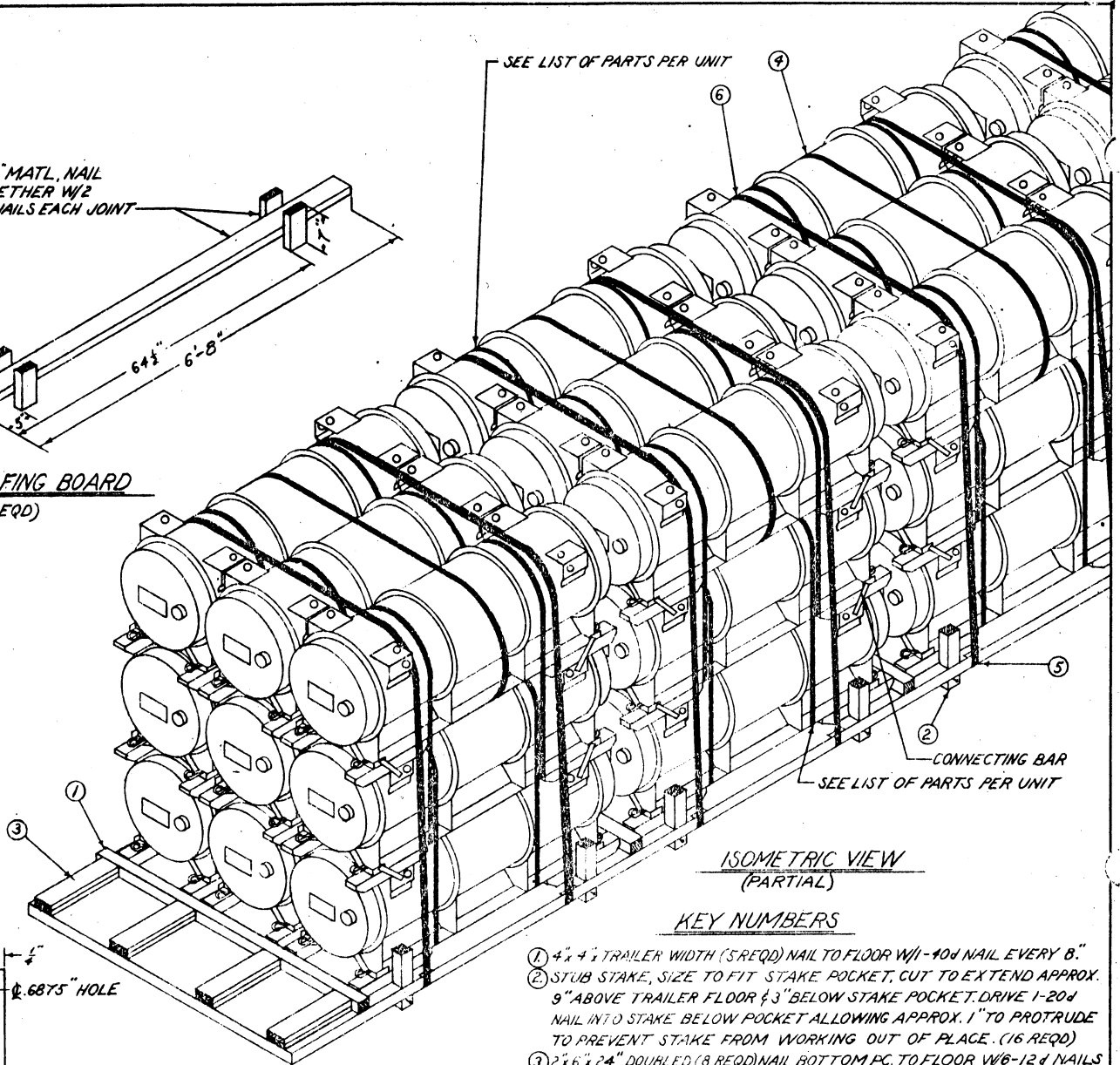
DRAFTER G.B.F.	TRACER	ENGINEER CRJ/ENR	SUBMITTED <i>W. J. [Signature]</i> COLONEL, ORD. CORPS U.S.A.	
CHECKER CRJ	CHECKER <i>[Signature]</i>	ENGINEER	EXAMINED Donald C. Kocher ORD. CORPS U.S.A.	
REVISIONS			APPROVED BY ORDER OF THE CHIEF OF ORDNANCE Angelo J. [Signature] ORD. CORPS U.S.A.	
			ORDNANCE CORPS U.S.A.	
			10 FEBRUARY 1958	
			CLASS	DIVISION
			DRAWING	FILE
			19	. 48
			5553	GM11A52

2x4 MATL. NAIL
TOGETHER W/2
100 NAILS EACH JOINT



ANTI-CHAFING BOARD
(16 REQD)

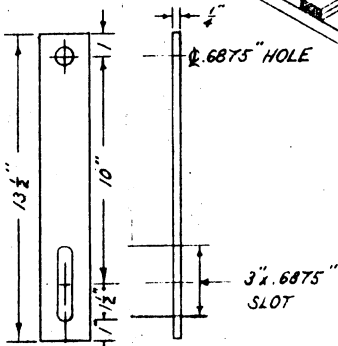
SEE LIST OF PARTS PER UNIT



ISOMETRIC VIEW
(PARTIAL)

KEY NUMBERS

- ① 4x4x4 TRAILER WIDTH (5 REQD) NAIL TO FLOOR W/1-100 NAIL EVERY 8"
- ② STUB STAKE, SIZE TO FIT STAKE POCKET, CUT TO EXTEND APPROX. 9" ABOVE TRAILER FLOOR & 3" BELOW STAKE POCKET. DRIVE 1-20d NAIL INTO STAKE BELOW POCKET ALLOWING APPROX. 1" TO PROTRUDE TO PREVENT STAKE FROM WORKING OUT OF PLACE. (16 REQD)
- ③ 2x6x24 DOUBLED (8 REQD) NAIL BOTTOM PC. TO FLOOR W/6-12d NAILS EACH. NAIL TOP PC. TO BOTTOM IN LIKE MANNER.
- ④ STEEL STRAP, 1 1/2" x .035 x 20'-0" (4 REQD) POSITION AS SHOWN
- ⑤ STAKE POCKET PROTECTOR (SIGNODE NO. 1) OR EQUAL. (16 REQD) POSITION BETWEEN STRAPPING & EDGE OF STAKE POCKET. ALT. 2x.050 STRAP 18" LONG, BENT TO FIT.
- ⑥ STEEL STRAP, 2" x .050 x 25'-0" (8 REQD) POSITION AS SHOWN.



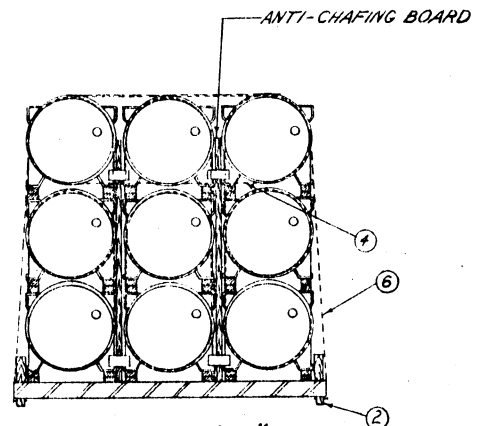
CONNECTING BAR

NOTE:
EACH GROUP OF THREE (3) CONTAINERS REQUIRES:
1. EIGHT (8) CONNECTING BARS SECURED IN PLACE BY SIXTEEN (16) BOLTS 7/8" DIA. (SEE LIST OF PARTS). SIXTEEN (16) NUTS (SEE LIST OF PARTS)
2. 1.25" STEEL STRAPPING, APPLIED AS SHOWN IN ISOMETRIC VIEW OF TRUCKLOAD
N.B. LOCK WASHERS WILL NOT BE USED

LIST OF PARTS PER UNIT

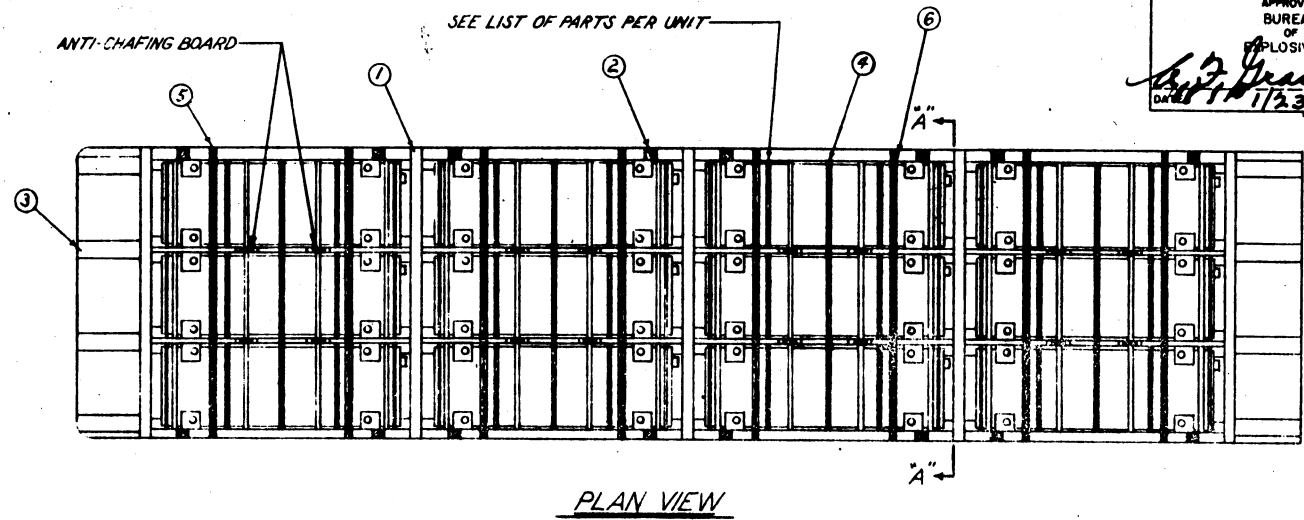
LINE NO	NAME OF PART	NO. REQD.	PC. MK. (ORD PART NO)	MATERIAL			REMARKS
				SIZE OR FORM	KIND	GRADE	
1	SCREW, CAP	16	28330	5/8"-18-UNC-2A	STEEL, ALLOY		PLAIN FINISH
2	NUT, CASTLE	16	218463	7/8"-18-UNC-2B	STEEL, ALLOY		PLAIN FINISH
3	WASHER	16	221410	5/8"	STEEL, COMMOM RESISTANT	LIGHT SER.	PLAIN
4	PIN, COTTER	16	380482	5/8"	STEEL, COMMOM RESISTANT		SPLIT #
5	BAR, CONNECTING	8		2 1/2" x 18"	STEEL, HOT ROLLED	WD1010	ST-136
6	STRAPPING	4		1.25" x .035"	STEEL	TYPE, CL. A OR C	99-5-781A 12'-6"

*ALTERNATE: DOUBLE "LOCK NUTS" MAY BE SUBSTITUTED FOR CASTLE NUTS AND COTTER PINS.

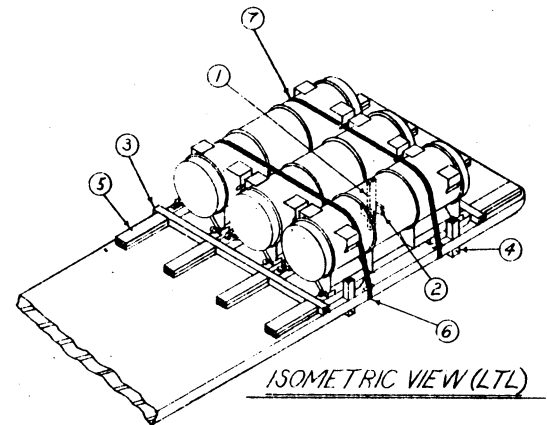


SECTION "AA"

APPROVED
BUREAU
OF
EXPLOSIVES
W. J. Grassmuck
DATE 1/23/58 INSPECTOR



PLAN VIEW



ISOMETRIC VIEW (LTL)

GENERAL NOTES

- A. LOAD AS SHOWN IS BASED ON FLATBED TRAILERS HAVING DIMENSIONS OF 34'-0" LONG x 8'-0" WIDE.
- B. SHIPMENTS WILL BE LOADED ON THE TRAILER, CONSISTENT WITH STATE WEIGHT LAWS. THE NUMBER OF UNITS MAY BE ADJUSTED TO FIT THE DIMENSIONS OF THE VEHICLE CONCERNED OR THE QUANTITY TO BE SHIPPED; HOWEVER, THE APPROVED METHOD CONTAINED HEREIN FOR FULL OR PARTIAL TRUCKLOAD MUST BE FOLLOWED FOR BLOCKING, BRACING AND STAYING OF THIS ITEM.
- C. THE GROSS WEIGHT AND AXLE DISTRIBUTION OF WEIGHT WILL BE IN ACCORDANCE WITH PARA 8,346.4 OF ORDM 3-4, VOL.3, DTD. 1 JULY 1955.
- D. FOR DETAIL OF CONTAINER SEE DRAWING NO. _____, CONTAINER SIZE - 86 1/2" LONG x 28 1/2" WIDE x 33 1/2" HIGH, GROSS WT. - 700 LBS.
- E. SELECTION OF VEHICLES USED OR TO BE USED TO TRANSPORT GUIDED MISSILE AMMUNITION AND/OR COMPONENTS THEREOF, MUST COMPLY WITH AR-55-225, DATED 4 OCTOBER 1955, SECTION II, PAR 13, THROUGH PAR 20 FOR EXPLOSIVES OR OTHER DANGEROUS ARTICLES, IN FULL.
- F. FLATBED TRAILERS WITH ALL-METAL FLOORS WILL NOT BE USED FOR SHIPPING THIS ITEM.
- G. LADING WILL NOT BE SECURED WITH CHAINS AND/OR LOAD BINDERS.

KEY NUMBERS (LTL)

- ① ANTI-CHAFING BOARD, 2" x 4" x 26" (4 REQD) POSITION BETWEEN CNTRS.
- ② 2" x 4" (8 REQD) NAIL TO ① W/ 10d NAILS EACH.
- ③ 4" x 4" TRAILER WIDTH (2 REQD) NAIL TO FLOOR W/ 40d NAIL EVERY 8"
- ④ STUB STAKE, SIZE TO FIT STAKE POCKET, CUT TO EXTEND APPROX 9" ABOVE TRAILER FLOOR 1/3" BELOW STAKE POCKET. DRIVE 1-20d NAIL INTO STAKE BELOW POCKET ALLOWING APPROX. 1" TO PROTRUDE TO PREVENT STAKE FROM WORKING OUT OF PLACE (4 REQD).
- ⑤ 2" x 6" x 24" DOUBLED (8 REQD) NAIL BOTTOM PC. TO FLOOR W/ 6-12d NAILS EACH. NAIL TOP PC. TO BOTTOM IN LIKE MANNER.
- ⑥ STAKE POCKET PROTECTOR (SIGNODE NO. 1) OR EQUAL. (4 REQD) POSITION BETWEEN STRAP & EDGE OF STAKE POCKET. ALT. 2" x .050" STRAP 18"L, BENT TO FIT.
- ⑦ STEEL STRAP, 2" x .050" x 15'-6" (2 REQD) POSITION AS SHOWN.

LOAD AS SHOWN

NO CNTRS 36 TOTAL WT (INCL. DUNNAGE) 25,806 LBS

<u>BILL OF MATERIAL (TL)</u>		
LUMBER	LINEAL FEET	BOARD FEET
2" x 4"	144	96
2" x 6"	32	32
4" x 4"	60	80
NAILS	NO REQD	POUNDS
10d	128	2
12d	96	1 1/2
40d	60	2 1/2
20d	16	1/2
STEEL STRAPPING: 1 1/2" x .035" - 80 FT REQD - 12 LBS.		
STEEL STRAPPING: 2" x .050" - 200 FT REQD - 67 LBS.		

MATERIAL SPECIFICATIONS

LUMBER: SEE PAR. 8400, ORDM 3-4, VOL. 3, DATED 1 JULY 1955.
 NAILS: COMMON CEMENT COATED, FED. SPEC. FF-N-105.
 ALT: ANNULAR-RING TYPE NAILS OF SAME SIZE.
 STRAPPING, STEEL: TYPE 1, CLASS A OR C, FED. SPEC. QQ-S-781A

DO NOT SCALE

TRUCKLOADING (TL & LTL) ON FLATBED TRAILER OF THE FORE SECTION FOR THE HAWK ANTI-AIRCRAFT GUIDED MISSILE

DESIGNED BY G.B.F.	TRACED	ENGINEER CRJ/ELW	SUBMITTED <i>W. J. Grassmuck</i>
CHECKED CRJ	CHECKED <i>CRJ</i>	ENGINEER	COLONEL, ORN. CORPS U.S.A.
REVISIONS			EXAMINED <i>Donald C Koehn</i>
			ORN. CORPS U.S.A.
			APPROVED BY ORDER OF THE CHIEF OF ORDNANCE <i>Angelo J. Demeruti</i>
			ORN. CORPS U.S.A.
			ORDNANCE CORPS U.S.A.
			10 FEBRUARY 1958
CLASS	DIVISION	DRAWING	FILE
19	48	5553	GM11A52