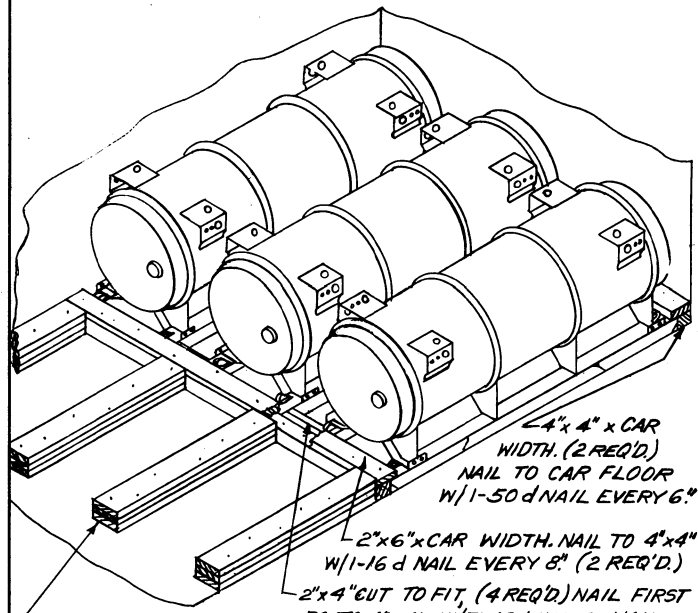


CROSS SECTION



2" x 6" x 48" (TRIPLED), 4 REQ'D NAIL BOTTOM PC. TO FLOOR W/1-12d NAIL EVERY 8" NAIL SECOND PC. TO FIRST AND THIRD TO SECOND IN LIKE MANNER.

2" x 6" x CAR WIDTH. NAIL TO 4" x 4" W/1-16d NAIL EVERY 8" (2 REQ'D.)

2" x 4" CUT TO FIT, (4 REQ'D) NAIL FIRST PC. TO 4" x 4" W/3-16d NAILS. NAIL SECOND PC. TO FIRST IN LIKE MANNER.

4" x 4" x CAR WIDTH. (2 REQ'D) NAIL TO CAR FLOOR W/1-50d NAIL EVERY 6"

ISOMETRIC VIEW LCL

BILL OF MATERIAL (8'6" W x 40'6" L)		
LUMBER	LINEAL FT	BOARD FT.
2" x 2"	51	17
2" x 4"	141	94
2" x 6"	210	210
4" x 4"	65	87
NAILS - 10d - APPROX. 402 REQ'D		6 1/4 LBS.
12d - APPROX. 108 REQ'D		2 LBS.
16d - APPROX. 156 REQ'D		3 1/2 LBS.
50d - APPROX. 65 REQ'D		5 LBS.
1 1/2" x .035" STEEL STRAPPING - APPROX. 23 FT. REQ'D.		3 1/2 LBS.

MATERIAL SPECIFICATIONS

LUMBER: SEE PAR. 8400, ORDM 3-4, VOL. 3, DATED 1 JULY 1955.

NAILS: COMMON, CEMENT COATED, FED SPEC. FF-N-105.

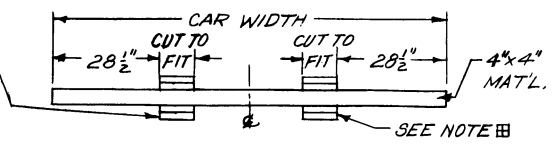
ALT: ANNULAR-RING TYPE NAILS OF SAME SIZE.

STRAPPING: STEEL, 1 1/2" x .035", TYPE 1, CLASS A DRG, FED. SPEC. QQ-S-781A.

DO NOT SCALE

2" x 4" MAT'L. (DOUBLED) (4 REQ'D) NAIL FIRST PIECE TO 4" x 4" W/3-16d NAILS. NAIL SECOND PIECE TO FIRST IN LIKE MANNER.

APPROVED BUREAU OF EXPLOSIVES
H. G. Grassmuck
 DATE: 1/23/58 INSPECTOR



PC. MK. 1
(5 REQ'D)

NOTE B: PIECE MARK 1 USED AT ENDS OF CAR WILL REQUIRE OMISSION OF DOUBLED 2" x 4" BLOCKS FROM ONE SIDE

GENERAL NOTES

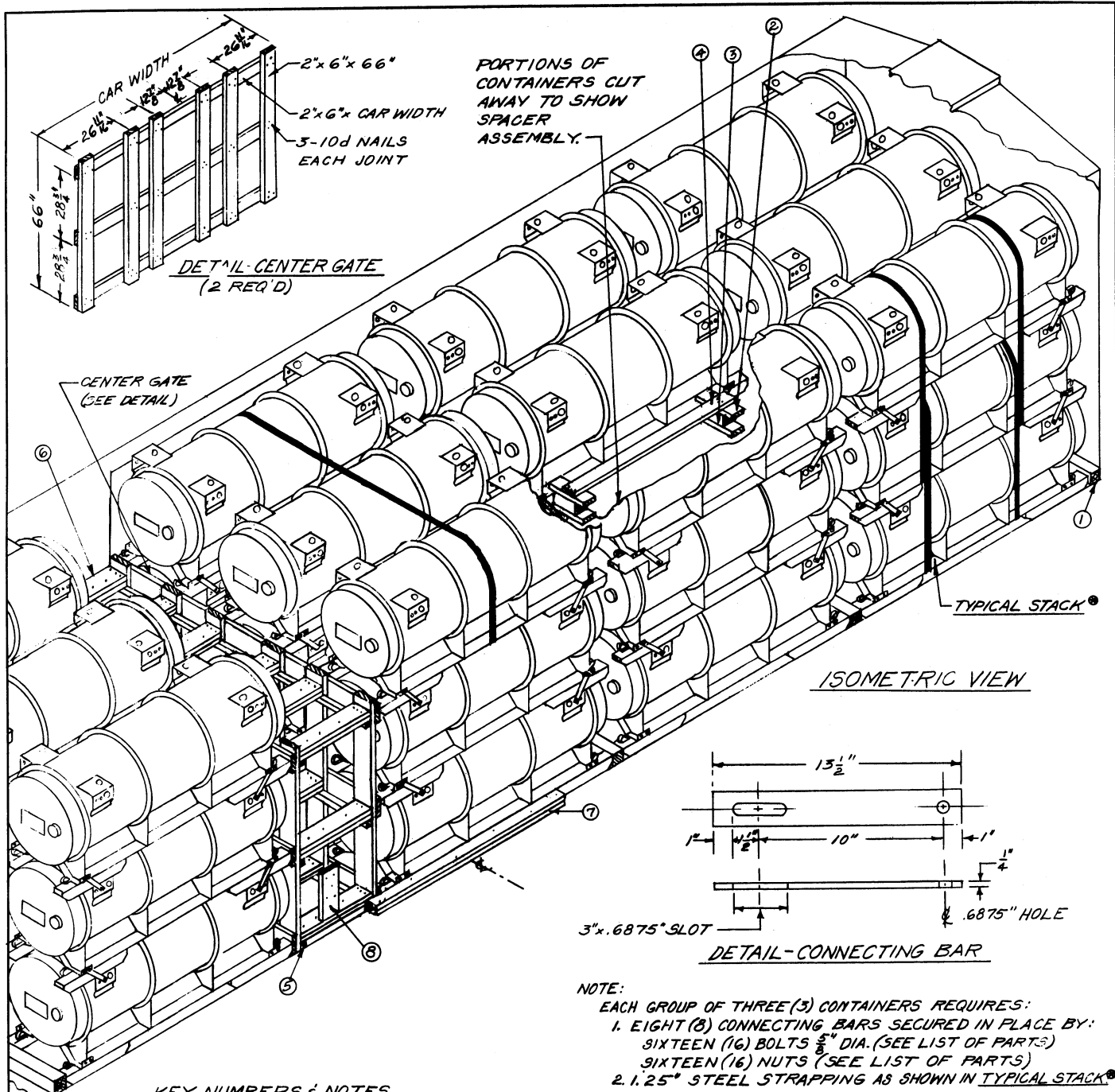
- A. PREFERRED LOADING IS IN 8'-6" WIDTH x 40'-6" LONG BOX CARS.
- B. SELECTION OF RAILCARS FOR THE TRANSPORT OF THESE ITEMS WILL BE IN ACCORDANCE WITH PAR. 8,300.6 OF ORDM 3-4, VOL. 3
- C. NOTICE: SHIPMENTS WILL BE POSITIONED IN THE RAILCAR IN COMPLIANCE WITH THE WEIGHT DISTRIBUTION REQUIREMENTS OF THE AAR. THE NUMBER OF UNITS MAY BE ADJUSTED TO FIT THE RAILCAR CONCERNED OR THE QUANTITY TO BE SHIPPED, HOWEVER, THE APPROVED METHODS HEREIN FOR FULL OR PARTIAL CARLOAD MUST BE FOLLOWED FOR BLOCKING, BRACING AND STAYING OF THIS ITEM.
- D. FOR DETAIL OF CONTAINER SEE DWG. NO. _____
 CNTR. SIZE - 86 1/2" L x 28 1/2" W x 33 3/4" H
 GROSS WT. - 700 LBS.

LOAD AS SHOWN

CNTRS	WT (INCL. DUNNAGE)
45	32,751 LBS.

LOADING & BRACING IN BOX CARS OF THE FORE SECTION FOR THE HAWK ANTI-AIRCRAFT GUIDED MISSILE

DRAFTSMAN RAS	TRACER	ENGINEER CRJ/Earl	SUBMITTED
CHECKER CRJ	CHECKER AD	ENGINEER	<i>W. P. ...</i>
REVISIONS			EXAMINED <i>Donald C Koehn</i>
			APPROVED BY ORDER OF THE CHIEF OF ORDNANCE <i>Angelo J. ...</i>
ORDNANCE CORPS U.S.A.			
10 FEBRUARY 1958			
CLASS	DIVISION	DRAWING	FILE
19	48	5355	GM5A53



KEY NUMBERS & NOTES

- ① SEE DETAIL
- ② 2" x 4" x 13" (8'-6" W CAR), 2" x 4" x 17" (9'-2" W CAR), (40 REQ'D) NAIL TO 1" C W/3-10d NAILS EACH.
- ③ 4" x 4" x APPROX. 7 1/2" (8'-6" W CAR), 4" x 4" x APPROX. 11 1/2" (9'-2" W CAR) (20 REQ'D) N.B.; LOCK WASHERS WILL NOT BE USED.
- ④ 2" x 4" x 5'-C" (10 REQ'D) NAIL TO PC W/3-16d NAILS EACH END.
- ⑤ 2" x 2" x CAR WIDTH (6 REQ'D) NAIL TO GATE UPRIGHTS UNDER C W/2-10d NAILS EACH JOINT.
- ⑥ 2" x 6" x 25" APPROX. NAIL TOGETHER W/1-10d NAIL EVERY 6" TO NAIL TO GATE UPRIGHTS W/3-12d NAILS.
- ⑦ 2" x 4" x DOOR WIDTH (DOUBLED). WEDGE FIT FOR CARS WITH STEEL THRESHOLDS. NAIL TOGETHER WITH 1-10d NAIL EVERY 12". NAIL TO WOOD THRESHOLD WITH 1-50d EVERY 12".
- ⑧ 2" x 6" x 18" GATE HOLD DOWN (2 REQ'D) NAIL TO CAR WALL WITH 8-12d NAILS EACH.

NOTE:
 EACH GROUP OF THREE (3) CONTAINERS REQUIRES:
 1. EIGHT (8) CONNECTING BARS SECURED IN PLACE BY:
 SIXTEEN (16) BOLTS 5/8" DIA. (SEE LIST OF PARTS)
 SIXTEEN (16) NUTS (SEE LIST OF PARTS)
 2. 1.25" STEEL STRAPPING AS SHOWN IN TYPICAL STACK

NOTE:
 HOLES MAY BE "BURNED" THRU CONNECTING BAR THEN ENLARGED TO .6875" WITH A "BRIDGE" TYPE REAMER.

LIST OF PARTS PER UNIT (STACK)

LINE NO.	NAME OF PART	PC. REQ'D	PC. NO. (ORD PART NO.)	SIZE OR FORM	KIND	GRADE	SPEC. NO. (DWS. NO.)	REMARKS
1	SCREW, CAP	16	226810	4/8-18-UNF-2A	STEEL ALLOY		BUBX31	PLAIN FINISH
2	NUT, CASTLE	16	218460	4/8-18-UNF-2B	STEEL ALLOY		BUNX11	PLAIN FINISH
3	WASHER	16	221490	5/8"	STEEL, CORROSION RESISTANT	LIGHT SERIES	BEEX1	PLAIN
4	PIN, COTTER	16	630482	1/2 x 2	STEEL CORROSION RESISTANT		BFAX3.1	SPLIT *
5	BAR, CONNECTING	8		2 1/2 x 18	STEEL, NOT ROLLED	WD1010	57-186	
6	STRAPPING	4		1 1/2 x 18	STEEL	TYPE 1 CL. A01C	80-578A	12'-6"

* ALTERNATE: DOUBLE "LOCK NUTS" MAY BE SUBSTITUTED FOR CASTLE NUTS AND COTTER PINS.