

# PrSM

## STORAGE IN APPROVED MAGAZINES OF PRECISION STRIKE MISSILE (PrSM) LAUNCH POD MISSILE CONTAINERS (LPMC)

<u>ITEM</u>	<u>INDEX</u>	<u>PAGE(S)</u>
GENERAL NOTES AND MATERIAL SPECIFICATIONS	- - - - -	2
LPMC DETAILS	- - - - -	3
TYPICAL STORAGE IN ARCHED OR ROUNDED ROOF MAGAZINES	- - - - -	4-11
CORBETTA MAGAZINE	- - - - -	12-13
100'-8" L X 50'-0" W RECTANGULAR MAGAZINE	- - - - -	14-15
60'-0" L X 40'-0" W X 15'-0" H TYPE II BUNKER MAGAZINE	- - - - -	16-17
60'-0" L X 40'-0" W X 11'-0" H TYPE III BUNKER MAGAZINE	- - - - -	18-19
40'-0" L X 20'-0" W X 11'-0" H TYPE IV BUNKER MAGAZINE	- - - - -	20-21
DETAILS	- - - - -	22

### U.S. ARMY MATERIEL COMMAND DRAWING

APPROVED, U.S. ARMY AVIATION AND MISSILE COMMAND  O'CONNOR.DOUG LAS.LEO.11405822 51  <small>Digitally signed by O'CONNOR.DOUGLAS.LEO.114 0582251 Date: 2023.10.30 16:05:42 -05'00'</small>	<b>CAUTION: VERIFY PRIOR TO USE AT <a href="https://www.dau.edu/cop/ammo/Pages/Default.aspx">https://www.dau.edu/cop/ammo/Pages/Default.aspx</a>                  THAT THIS IS THE MOST CURRENT VERSION OF THIS DOCUMENT. THIS IS PAGE 1 OF 22.</b>			
APPROVED BY ORDER OF COMMANDING GENERAL, U.S. ARMY MATERIEL COMMAND  BRAILSFORD.KEITH H.ANTHONY.10286 55661  <small>Digitally signed by BRAILSFORD.KEITH.ANTHONY. 1028655661 Date: 2023.10.31 12:59:59 -05'00'</small>	DO NOT SCALE	<h2 style="margin: 0;">SEPTEMBER 2023</h2>		
	DESIGN ENGINEER	BASIC REV.	RICHARD GARSIDE	
DEFENSE AMMUNITION CENTER	ENGINEERING DIVISON	FIEFFER.LAUR A.A.1230375727  <small>Digitally signed by FIEFFER.LAURA.A.1230375727 Date: 2023.10.12 08:17:24 -05'00'</small>		
	TEST ENGINEER TEST REPORT	NA	FELICIANO.ADI N.1259200373  <small>Digitally signed by FELICIANO.ADI.1259200373 Date: 2023.10.19 09:42:04 -05'00'</small>	
	EXPLOSIVE SAFETY DIRECTORATE	CUMMINS.PAU L.A.1231883122  <small>Digitally signed by CUMMINS.PAUL.A.1231883122 Date: 2023.10.26 06:40:49 -05'00'</small>		
	<b>19</b>	<b>48</b>	<b>5287</b>	<b>GM1-3-4-14-22PS2</b>

**GENERAL NOTES**

- A. THIS DOCUMENT HAS BEEN PREPARED AND ISSUED IN ACCORDANCE WITH AR 740-1 AND AUGMENTS TM 743-200-1 (CHAPTER 5).
- B. THE STORAGE PROCEDURES SPECIFIED IN THIS DRAWING ARE APPLICABLE TO THE PRECISION STRIKE MISSILE (PrSM) LAUNCH POD MISSILE CONTAINER (LPMC). SUBSEQUENT REFERENCE TO POD OR CONTAINER HEREIN MEANS THE LPMC WITH MISSILE COMPONENTS. SEE PAGE 3 AND AMCOM DRAWING 13774977 FOR DETAILS OF THE CONTAINER.
- C. THE STORAGE PROCEDURES DEPICTED WITHIN THIS DOCUMENT ARE APPLICABLE FOR STORAGE IN VARIOUS TYPES AND SIZES OF MAGAZINES. THE STORAGE PROCEDURES DEPICTED FOR THE SPECIFIC TYPES OF MAGAZINES MAY ALSO BE UTILIZED TO STORE CONTAINERS IN OTHER TYPES OF APPROVED MAGAZINES. MINOR ADJUSTMENTS MAY BE MADE TO FACILITATE STORAGE IN OTHER TYPES OF MAGAZINES, HOWEVER THE BASIC PRINCIPLES AS DEPICTED HEREIN WILL BE FOLLOWED.
- D. **CAUTION:** THE ALLOWABLE "EXPLOSIVE LIMIT" ESTABLISHED FOR A MAGAZINE IS NOT TO BE EXCEEDED. THIS LIMITATION MAY REQUIRE A QUANTITY REDUCTION FROM THE STORAGE AS SHOWN.
- E. **CAUTION:** THIS ITEM IS IN A "PROPULSIVE STATE" AND MUST BE STORED WITH THE FORWARD END FACING TOWARD THE SAME MAGAZINE SIDEWALL OR THE REAR WALL AS INDICATED BY THE DIRECTIONAL ARROWS ON THE STORAGE VIEWS.
- F. STORED CONTAINERS MUST NOT CONTACT THE SIDES OF A MAGAZINE. THEREFORE, UNITS MUST BE STORED A MINIMUM OF 6" FROM THE SIDEWALL OR CURVATURE OF THE MAGAZINE AS APPLICABLE. TO PROVIDE FOR THIS MANDATORY CLEARANCE REQUIREMENT, UNITS MAY BE ELIMINATED FROM THE DEPICTED STORAGE PATTERN AS NECESSARY.
- G. AISLE DIMENSION SHOWN FOR STORAGE PROCEDURES IN MAGAZINES MAY BE ADJUSTED TO SUIT LOCAL CONDITIONS, VARIATIONS IN CONTAINER DIMENSIONS, AND/OR AVAILABLE MATERIAL HANDLING EQUIPMENT (MHE). HOWEVER, A 24" MINIMUM INSPECTION AISLE MUST BE MAINTAINED AT THE AFT END OF THE CONTAINERS FOR INVENTORY PURPOSES AND FOR INSPECTION OF THE WIRING HARNESS AND GROUND CABLE, AND TO ENSURE THAT "SHORTING PLUGS" ARE IN PLACE ON ALL CONTAINERS FOR PROTECTION FROM STATIC ELECTRICITY AND STRAY VOLTAGE.
- H. THE MAXIMUM FLOOR LOAD FOR A MAGAZINE AS PRESCRIBED WILL NOT BE EXCEEDED.
- J. IF AVAILABLE MHE PERMITS, ADDITIONAL CONTAINERS MAY BE STORED WITHIN THE MHE AREA AND/OR OTHER AVAILABLE AREA OF THE MAGAZINE.
- K. THE HEIGHT OF THE PACKAGE GUARD ON SOME FORKLIFT TRUCKS MAY NOT PERMIT PLACEMENT OF SOME TOP LAYER CONTAINERS IN THE STACKS SHOWN IN THE STORAGE VIEWS HEREIN, UNLESS TWO UPPER CONTAINERS ARE HANDLED AS ONE LIFT OR THE PACKAGE GUARD IS REMOVED (TINE CARRIAGE WILL IN MOST INSTANCES PROVIDE ADEQUATE PACKAGE GUARD PROTECTION). ONLY A FORKLIFT TRUCK OF ADEQUATE CAPACITY WILL BE USED WHEN LIFTING TWO CONTAINERS AS ONE LIFT.
- L. THE SHOCK ISOLATOR (RUBBER) SKIDS OF A CONTAINER WILL NOT ADEQUATELY SUPPORT A STACK OF TWO OR MORE CONTAINERS, SO POD SUPPORT ASSEMBLIES MUST BE INSTALLED BEHIND THE SKIDS OF THE LOWER CONTAINERS IF STACKS ARE TWO OR MORE HIGH.

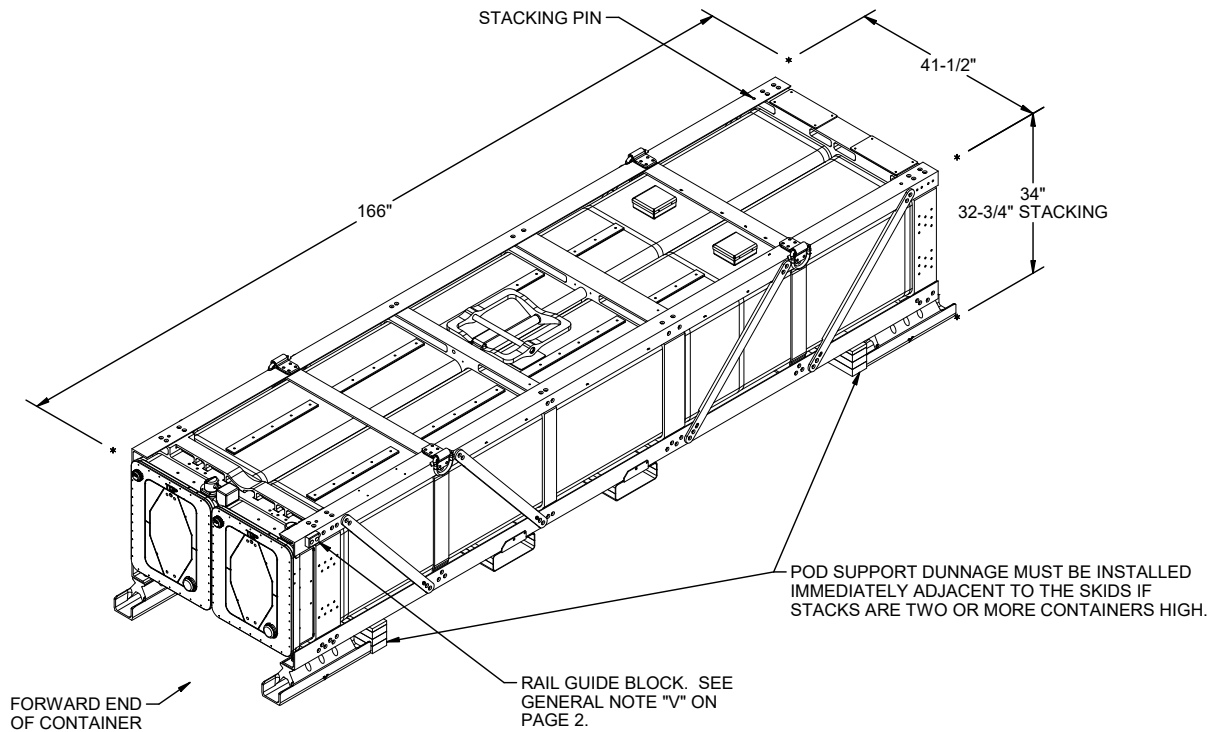
(CONTINUED AT RIGHT)

**(GENERAL NOTES CONTINUED)**

- M. **CAUTION:** CONTAINERS MUST NOT BE STACKED MORE THAN FOUR HIGH.
- N. WHEN LOCAL STORAGE CONDITIONS ARE SUCH THAT AN AMMUNITION STORAGE MAGAZINE NET EXPLOSIVE WEIGHT LIMIT WILL BE REACHED BEFORE ALL AVAILABLE STORAGE SPACE WILL BE UTILIZED, A COMBINATION OF THE VARIOUS STORAGE PATTERNS DELINEATED HEREIN MAY BE USED IN LIEU OF BLOCK STORAGE PATTERNS TO FACILITATE INVENTORY, INSPECTION, THE USE OF MATERIAL HANDLING EQUIPMENT, SURVEILLANCE, ETC., OF THE AMMUNITION TO BE STORED WITHIN THE MAGAZINE.
- O. ANY CONTAINER THAT DOES NOT CONTAIN TWO ROUNDS WILL NOT BE BURIED IN STORAGE; IT MUST BE POSITIONED ON TOP OF THE LAST STACK ADJACENT TO OR NEAREST THE MAGAZINE DOOR.
- P. CONTAINERS PRESENTLY STORED IN ACCORDANCE WITH A PRIOR APPROVED DRAWING NEED NOT BE RE-STORED SOLELY TO CONFORM TO THE PROCEDURES SPECIFIED IN THIS DOCUMENT.
- Q. OTHER COMPATIBLE ITEMS MAY BE STORED IN A MAGAZINE, WHICH IS PARTIALLY FILLED WITH THE DESIGNATED ITEM.
- R. PORTIONS OF THE MAGAZINES, SUCH AS SIDEWALLS, END WALLS, AND ROOFS HAVE NOT BEEN SHOWN IN THE STORAGE VIEWS FOR CLARITY PURPOSES.
- S. DUNNAGE LUMBER SPECIFIED THROUGHOUT THIS PROCEDURAL DRAWING IS OF NOMINAL SIZE. FOR EXAMPLE, 1" X 4" MATERIAL IS ACTUALLY 3/4" THICK BY 3-1/2" WIDE AND 2" X 6" MATERIAL IS ACTUALLY 1-1/2" THICK BY 5-1/2" WIDE.
- T. POD SUPPORT DUNNAGE IS NOT REQUIRED IF THE CONTAINERS BEING STORED ARE EQUIPPED WITH HARDWOOD SKIDS.
- U. **CAUTION:** WHEN STACKING CONTAINERS, THE ALIGNMENT HOLES IN THE SHOCK ISOLATOR SKIDS OF AN UPPER CONTAINER MUST BE PROPERLY ALIGNED WITH THE STACKING PINS OF A LOWER CONTAINER TO PRECLUDE UNDESIRABLE STRESS ON THE SHOCK ABSORBERS AND FRAME AND TO PROVIDE FOR STABILITY OF THE STACK.
- V. WHEN LOADING CONTAINERS IN MAGAZINES, CARE MUST BE TAKEN TO PROTECT THE RAIL GUIDE BLOCKS.
- W. TO FACILITATE MOVEMENT OF THE CONTAINERS THROUGH THE NARROW DOOR OPENINGS OF MOST TYPES OF STORAGE MAGAZINES, A "STORAGE HANDLING AID" HAS BEEN DESIGNED, FABRICATED AND USED. THE STORAGE AID CONSISTS OF A METAL RAMP AND WHEELED DOLLY. THIS AID PROVIDES FOR AN EFFICIENT OPERATION WITH A FORKLIFT TRUCK UNLOADING A CONTAINER FROM A TRANSPORT VEHICLE, PLACING THE CONTAINER ON THE WHEELED DOLLY ON THE RAMP AND ROLLING THE CONTAINER THROUGH THE NARROW DOOR OPENING INTO THE MAGAZINE WITH AN ELECTRIC PALLET JACK, TO PERMIT A FORKLIFT TRUCK WITHIN THE MAGAZINE TO REMOVE THE CONTAINER FROM THE DOLLY AND PLACE IT IN THE DESIGNATED STORAGE LOCATION. SEE GENERAL NOTE "X" FOR APPLICABLE DRAWING.
- X. FABRICATION DRAWING FOR THE STORAGE AID DESCRIBED IN GENERAL NOTE "W" IS AVAILABLE FROM THE DEFENSE AMMUNITION CENTER (DAC), 1 C TREE ROAD, ATTN: ATCL-ACE, MCALESTER, OK, 74501, DSN 956-8927. THE DRAWING NUMBER AND TITLE IS AS FOLLOWS: ACV00140; MLRS STORAGE HANDLING AID FOR NARROW DOOR MAGAZINES.
- Y. CONVERSION TO METRIC EQUIVALENTS: DIMENSIONS WITHIN THIS DOCUMENT ARE EXPRESSED IN INCHES, AND WEIGHTS ARE EXPRESSED IN POUNDS. WHEN NECESSARY, THE METRIC EQUIVALENT MAY BE COMPUTED ON THE BASIS OF ONE INCH EQUALS 25.4MM, AND ONE POUND EQUALS 0.454 KG.

**MATERIAL SPECIFICATIONS**

- LUMBER** - - - - - : SEE TM 743-200-1 (DUNNAGE LUMBER) AND VOLUNTARY PRODUCT STANDARD PS 20.
- NAILS** - - - - - : FED SPEC FF-N-105; COMMON.
- PLYWOOD** - - - - - : COMMERCIAL ITEM DESCRIPTION A-A-55057, TYPE A, CONSTRUCTION AND INDUSTRIAL PLYWOOD, INTERIOR WITH EXTERIOR GLUE, GRADE C-D. IF SPECIFIED GRADE IS NOT AVAILABLE, A BETTER INTERIOR OR AN EXTERIOR GRADE MAY BE SUBSTITUTED.



**LAUNCH POD MISSILE CONTAINER DATA**

GROSS WEIGHT - - - - - 4,615 LBS (APPROX)  
 CUBE - - - - - 130.56 CU FT (APPROX)

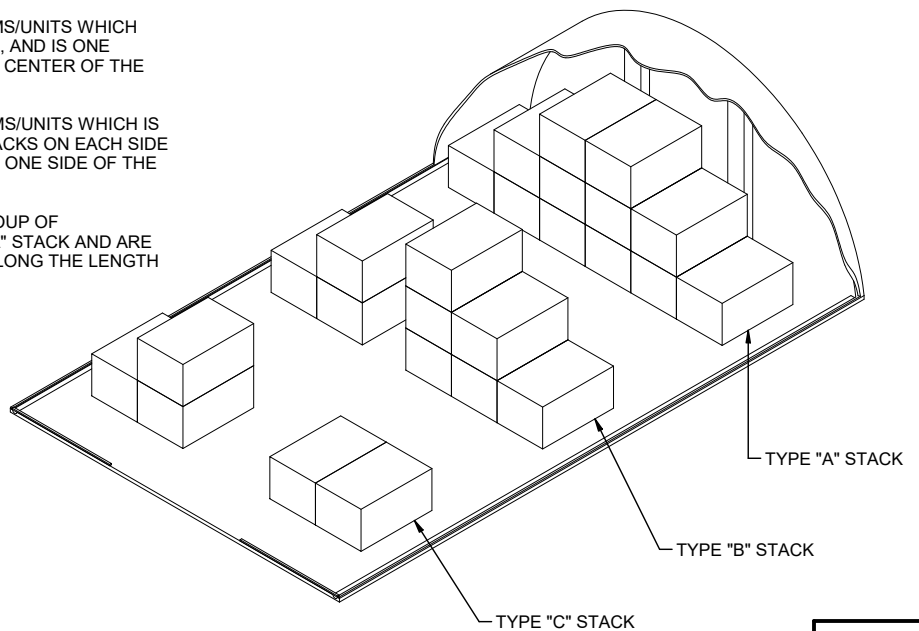
**STACK IDENTIFICATION**

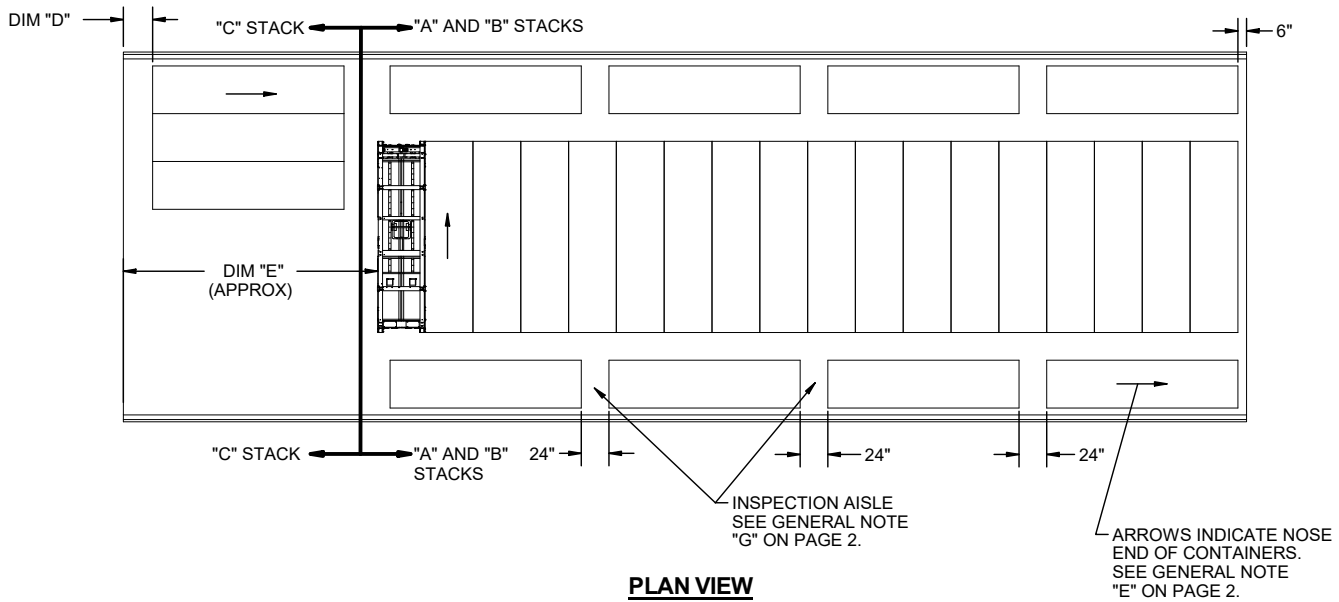
A TYPE "A" STACK IS IDENTIFIED AS A GROUP OF ITEMS/UNITS WHICH EXTENDS FULL WIDTH AND HEIGHT OF THE MAGAZINE, AND IS ONE ITEM/UNIT LONG IN THE LENGTH OF THE MAGAZINE.

A TYPE "B" STACK IS IDENTIFIED AS A GROUP OF ITEMS/UNITS WHICH EXTEND FULL WIDTH AND HEIGHT OF THE MAGAZINE, AND IS ONE UNIT/ITEM LONG, BUT HAS AN AISLE AT OR NEAR THE CENTER OF THE WIDTH OF THE STACK.

A TYPE "C" STACK IS IDENTIFIED AS A GROUP OF ITEMS/UNITS WHICH IS ONE UNIT/ITEM LONG AND CONSISTS OF PARTIAL STACKS ON EACH SIDE OF THE MAGAZINE, USUALLY ONE ITEM/UNIT HIGH ON ONE SIDE OF THE MAGAZINE.

**NOTE:** A MODIFIED "B" STACK IS IDENTIFIED AS A GROUP OF ITEMS/UNITS THAT ARE ON ONE SIDE OF THE TYPE "A" STACK AND ARE ORIENTED WITH THE LENGTH OF THE ITEMS/UNITS ALONG THE LENGTH OF THE STORAGE MAGAZINE.

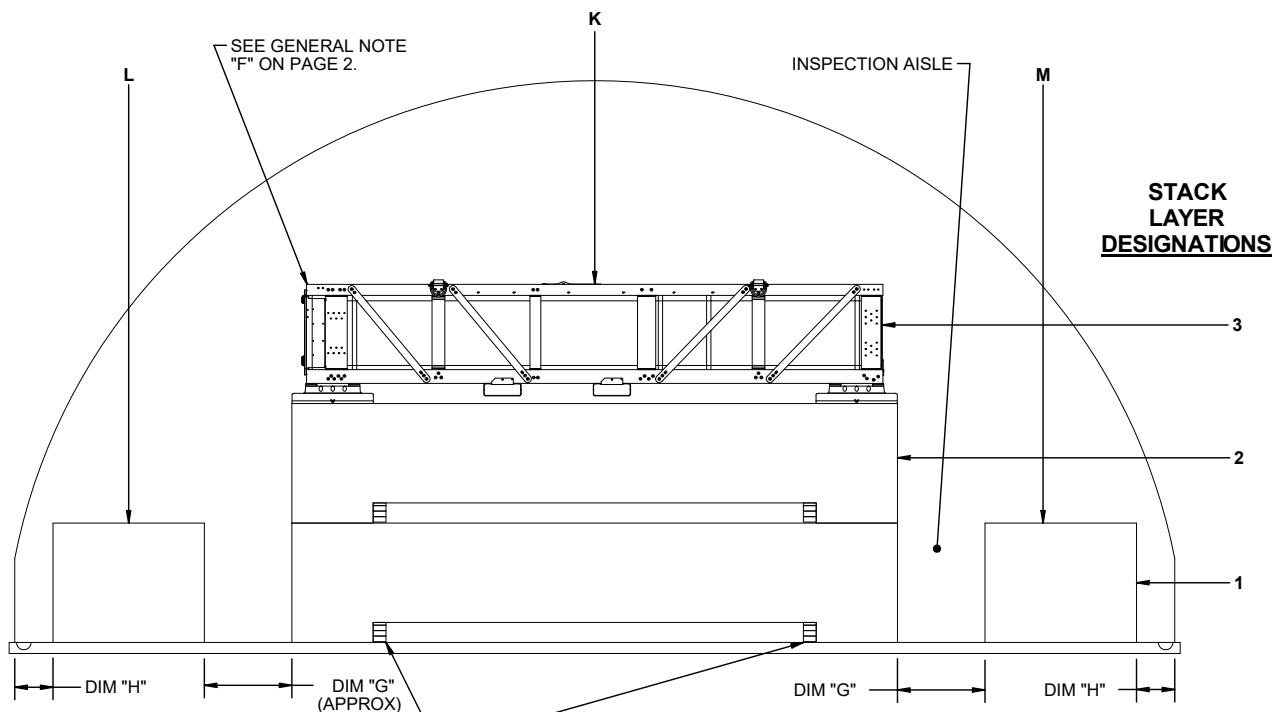




81' IGLOO MAGAZINE  
SHOWN AS TYPICAL

**NOTE:** FOR IDENTIFICATION OF LETTERED DIMENSIONS REFER TO CHART 1 ON PAGE 10.

**STACK COLUMN DESIGNATIONS**

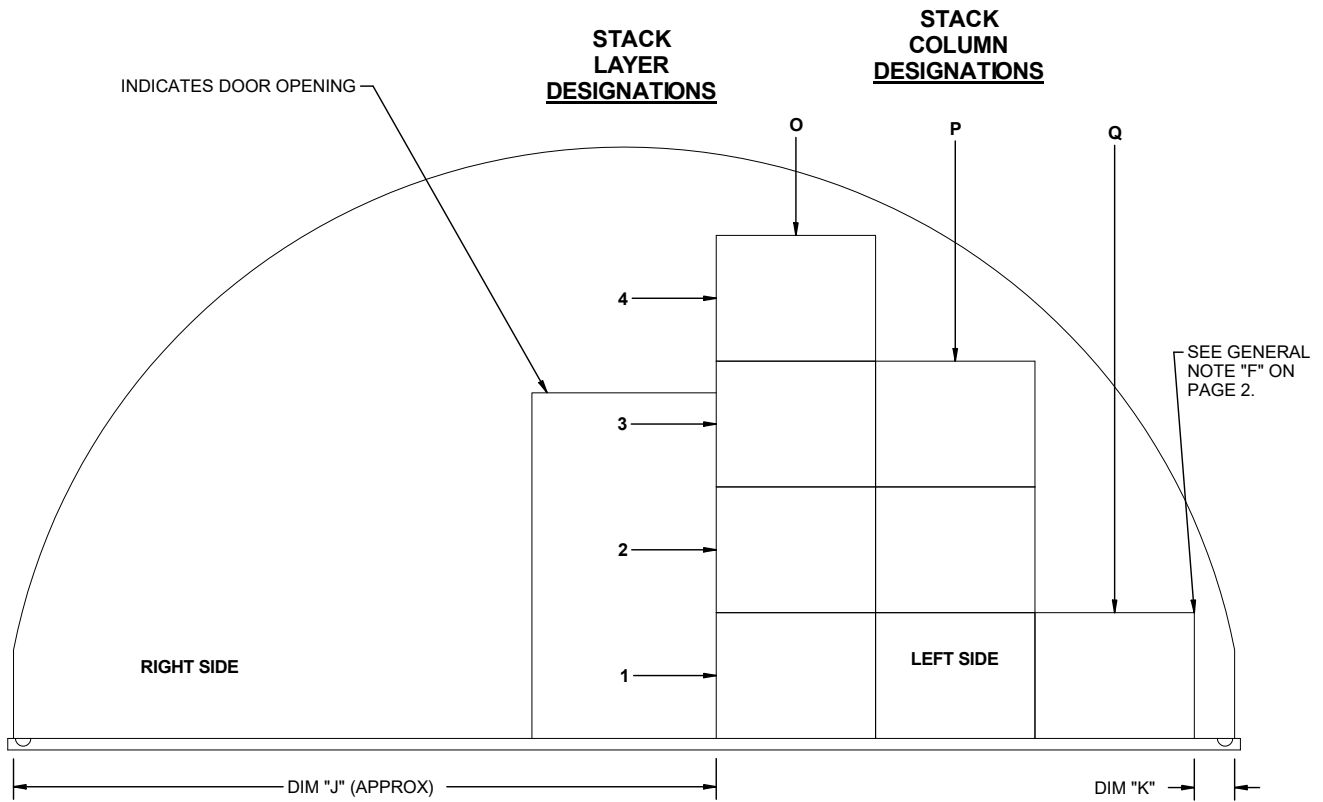


POD SUPPORT ASSEMBLY. SEE GENERAL NOTE "L" ON PAGE 2 AND DETAIL ON PAGE 22.

**"A" AND "B" STACKS**

(SEE "STACK IDENTIFICATION" ON PAGE 3 AND "CHART 2 - STACK CONFIGURATION" ON PAGE 11).

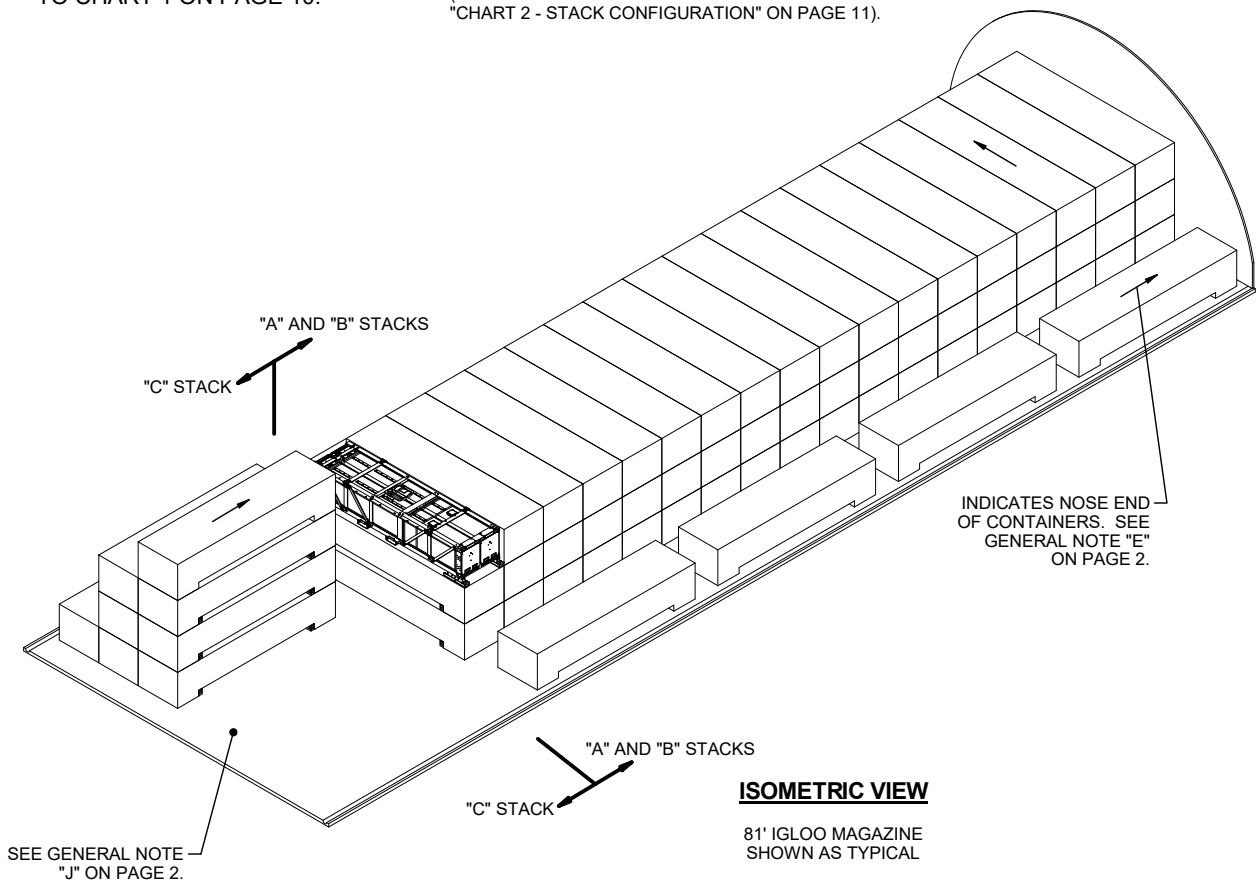
**TYPICAL STORAGE IN ARCHED OR ROUNDED ROOF MAGAZINES**



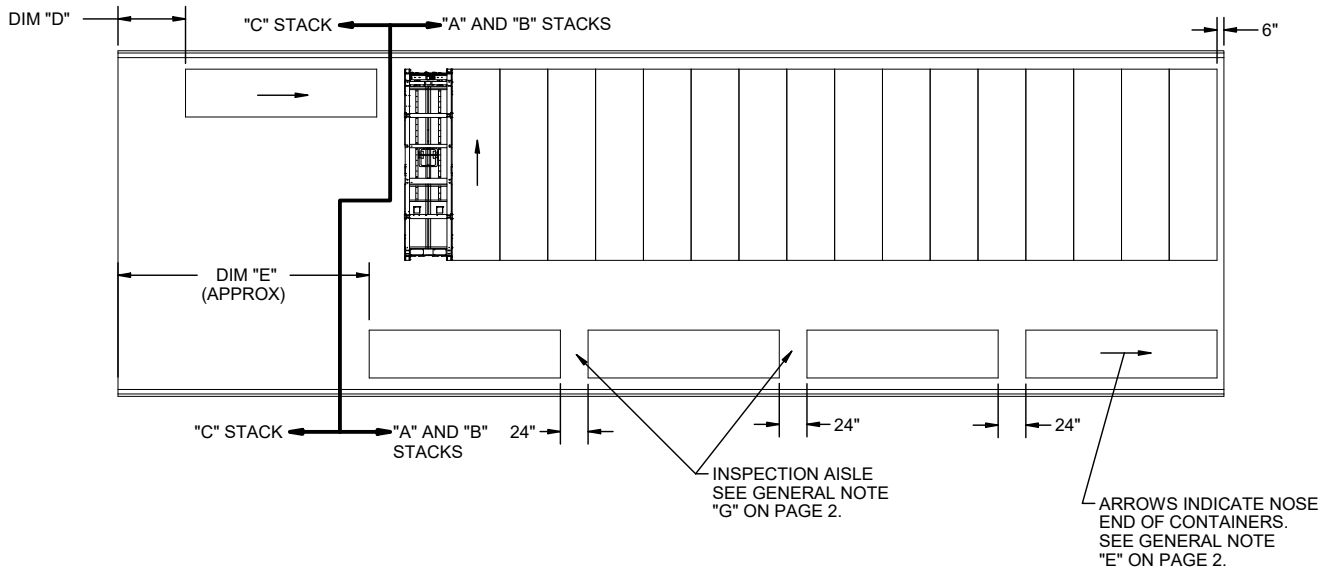
**NOTE:** FOR IDENTIFICATION OF LETTERED DIMENSIONS REFER TO CHART 1 ON PAGE 10.

**"C" STACK**

TYPICAL "C" STACK FOR 81' IGLOO MAGAZINE.  
(SEE "STACK IDENTIFICATION" ON PAGE 3 AND "CHART 2 - STACK CONFIGURATION" ON PAGE 11).



**TYPICAL STORAGE IN ARCHED OR ROUNDED ROOF MAGAZINES**

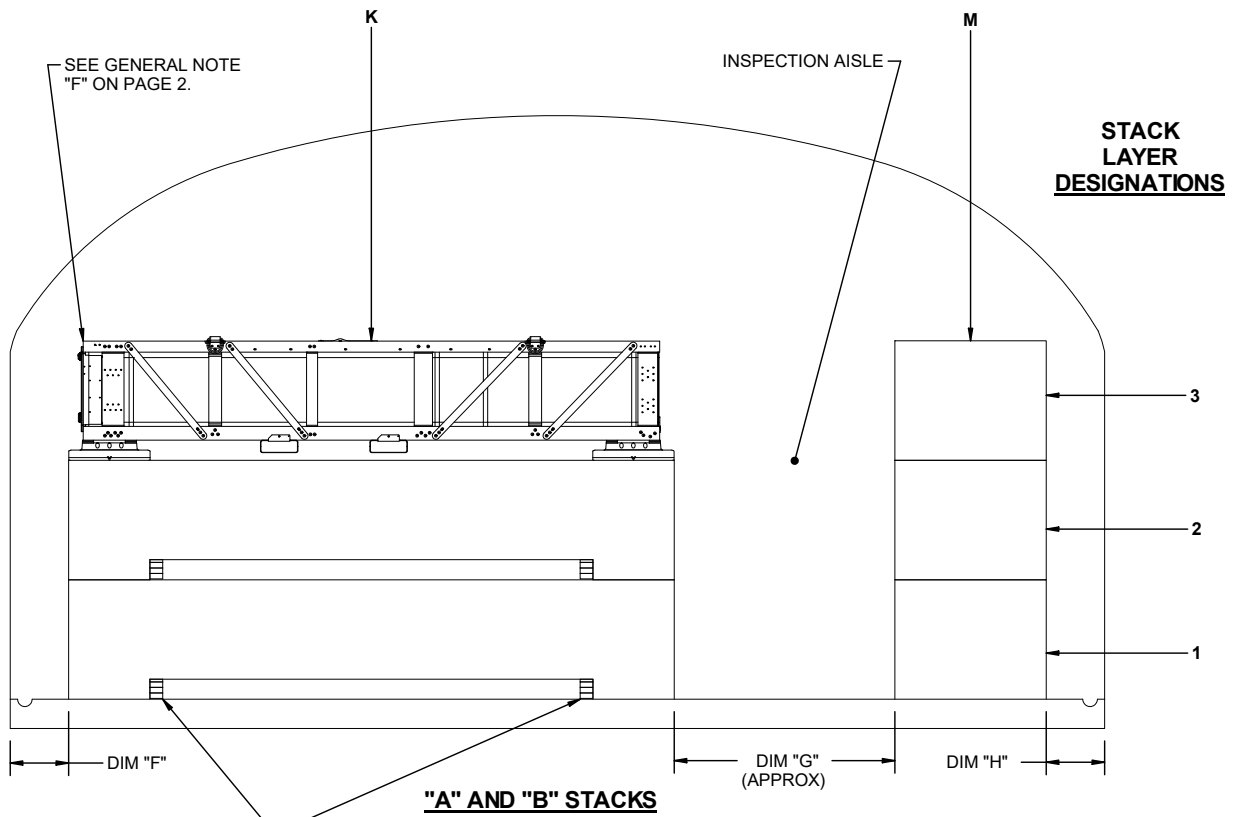


**PLAN VIEW**

STRADLEY MAGAZINE  
SHOWN AS TYPICAL

**NOTE:** FOR IDENTIFICATION OF LETTERED DIMENSIONS REFER TO CHART 1 ON PAGE 10.

**STACK COLUMN DESIGNATIONS**

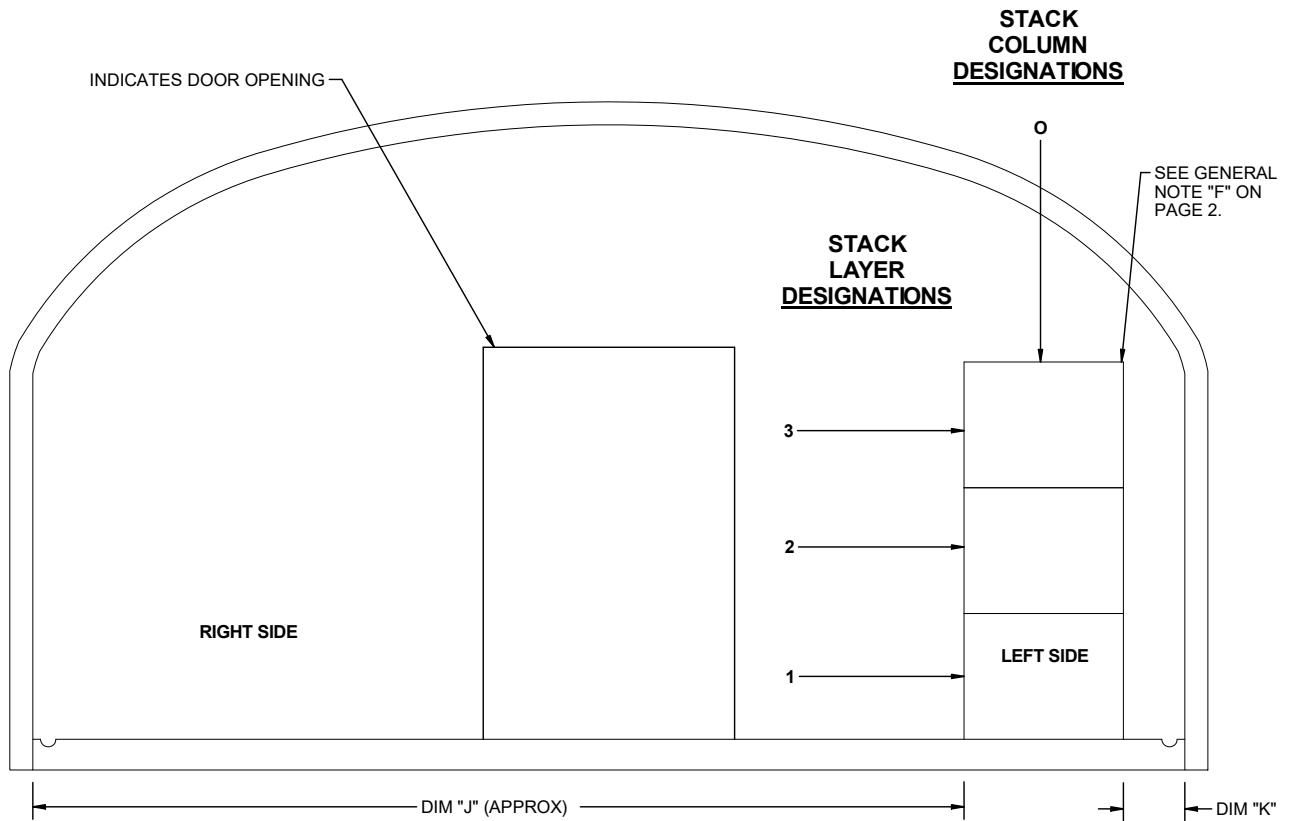


**STACK LAYER DESIGNATIONS**

POD SUPPORT ASSEMBLY. SEE GENERAL NOTE "L" ON PAGE 2 AND DETAIL ON PAGE 22.

(SEE "STACK IDENTIFICATION" ON PAGE 3 AND "CHART 2 - STACK CONFIGURATION" ON PAGE 11).

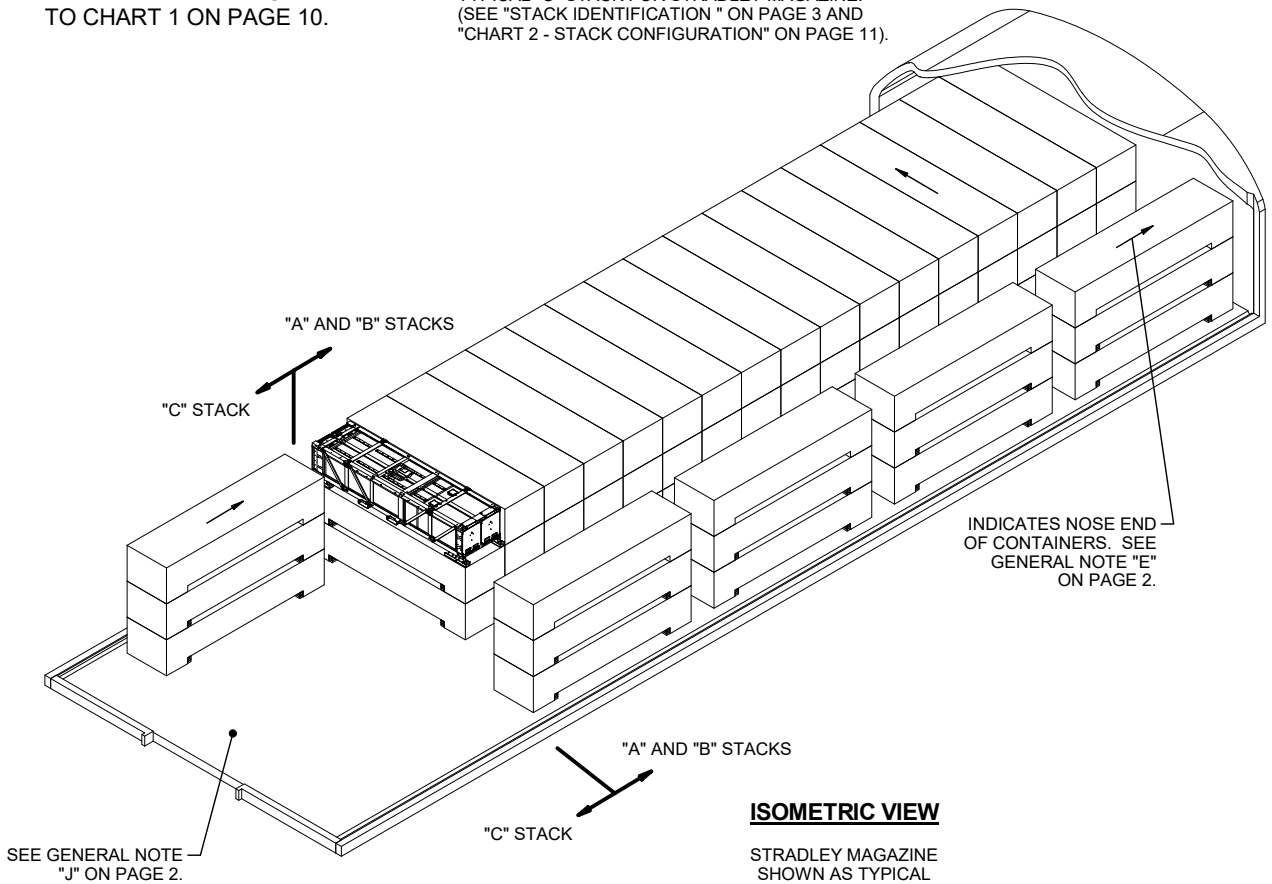
**TYPICAL STORAGE IN ARCHED OR ROUNDED ROOF MAGAZINES**



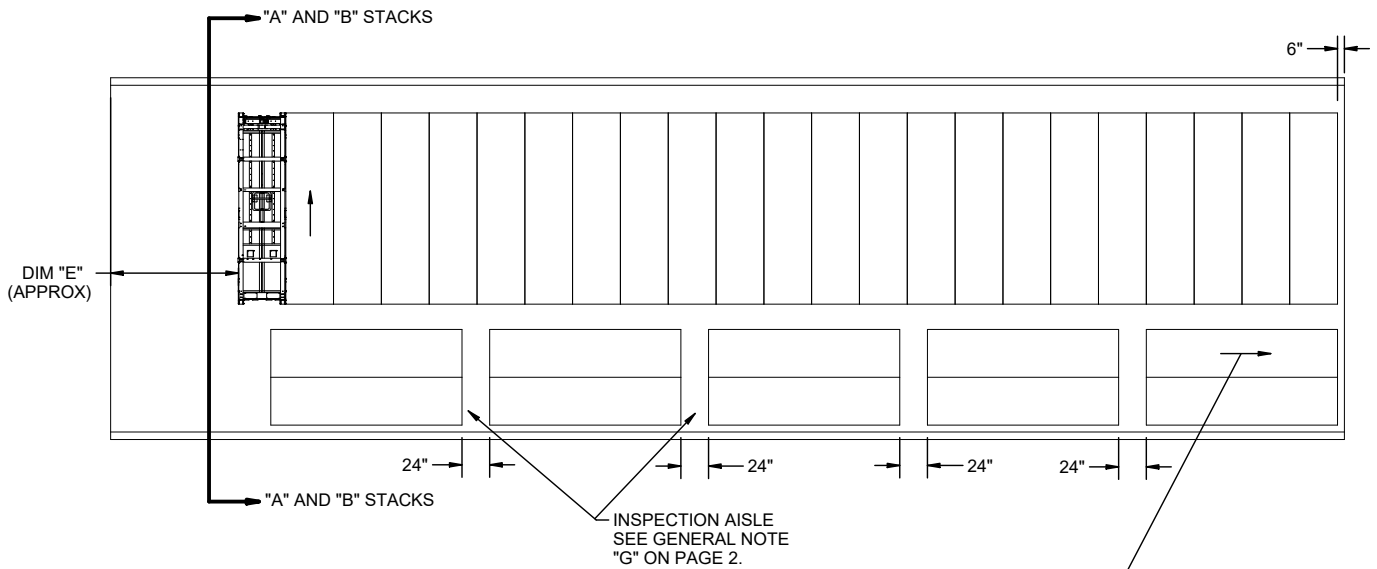
**NOTE:** FOR IDENTIFICATION OF LETTERED DIMENSIONS REFER TO CHART 1 ON PAGE 10.

**"C" STACK**

TYPICAL "C" STACK FOR STRADLEY MAGAZINE. (SEE "STACK IDENTIFICATION" ON PAGE 3 AND "CHART 2 - STACK CONFIGURATION" ON PAGE 11).



**TYPICAL STORAGE IN ARCHED OR ROUNDED ROOF MAGAZINES**



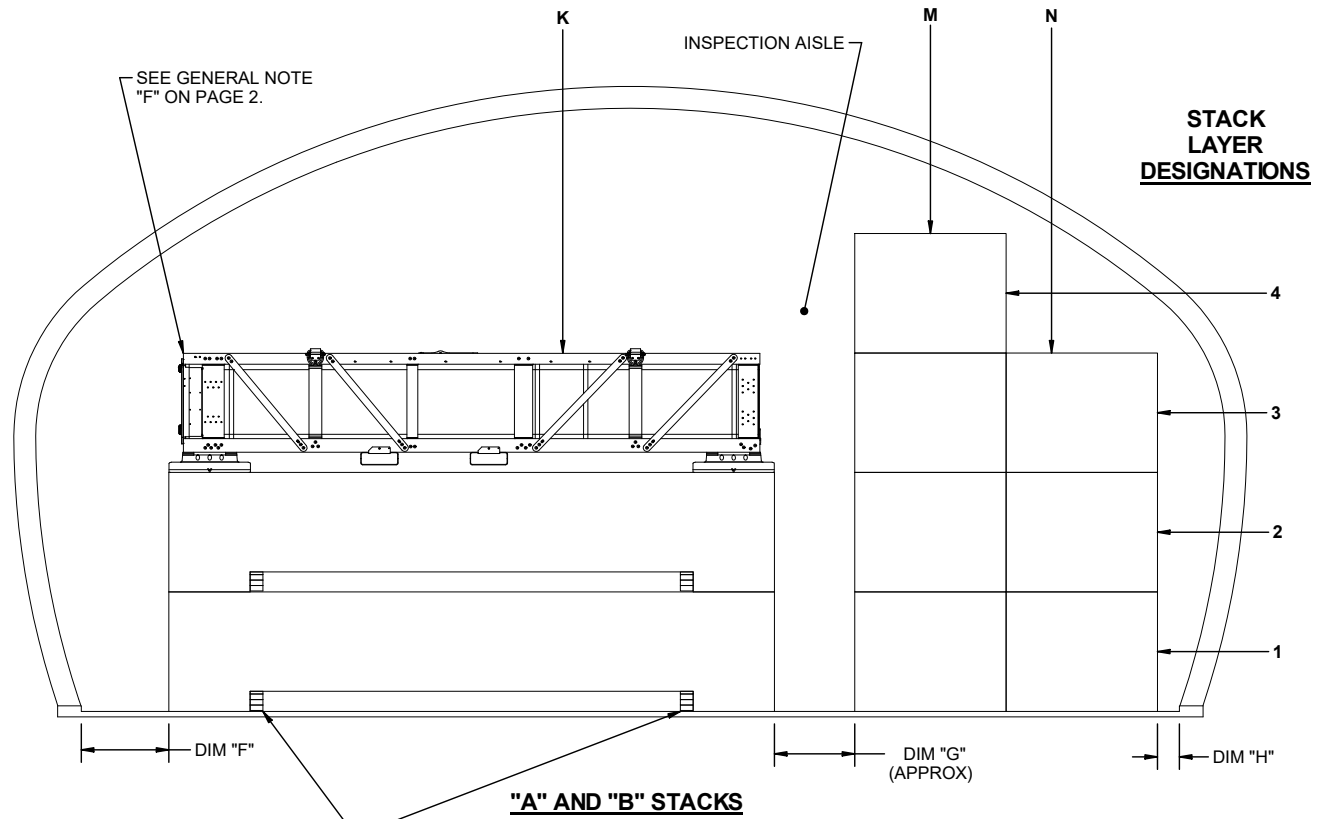
**PLAN VIEW**

OVAL MAGAZINE SHOWN AS TYPICAL

ARROWS INDICATE NOSE END OF CONTAINERS. SEE GENERAL NOTE "E" ON PAGE 2.

**NOTE:** FOR IDENTIFICATION OF LETTERED DIMENSIONS REFER TO CHART 1 ON PAGE 10.

**STACK COLUMN DESIGNATIONS**



SEE GENERAL NOTE "F" ON PAGE 2.

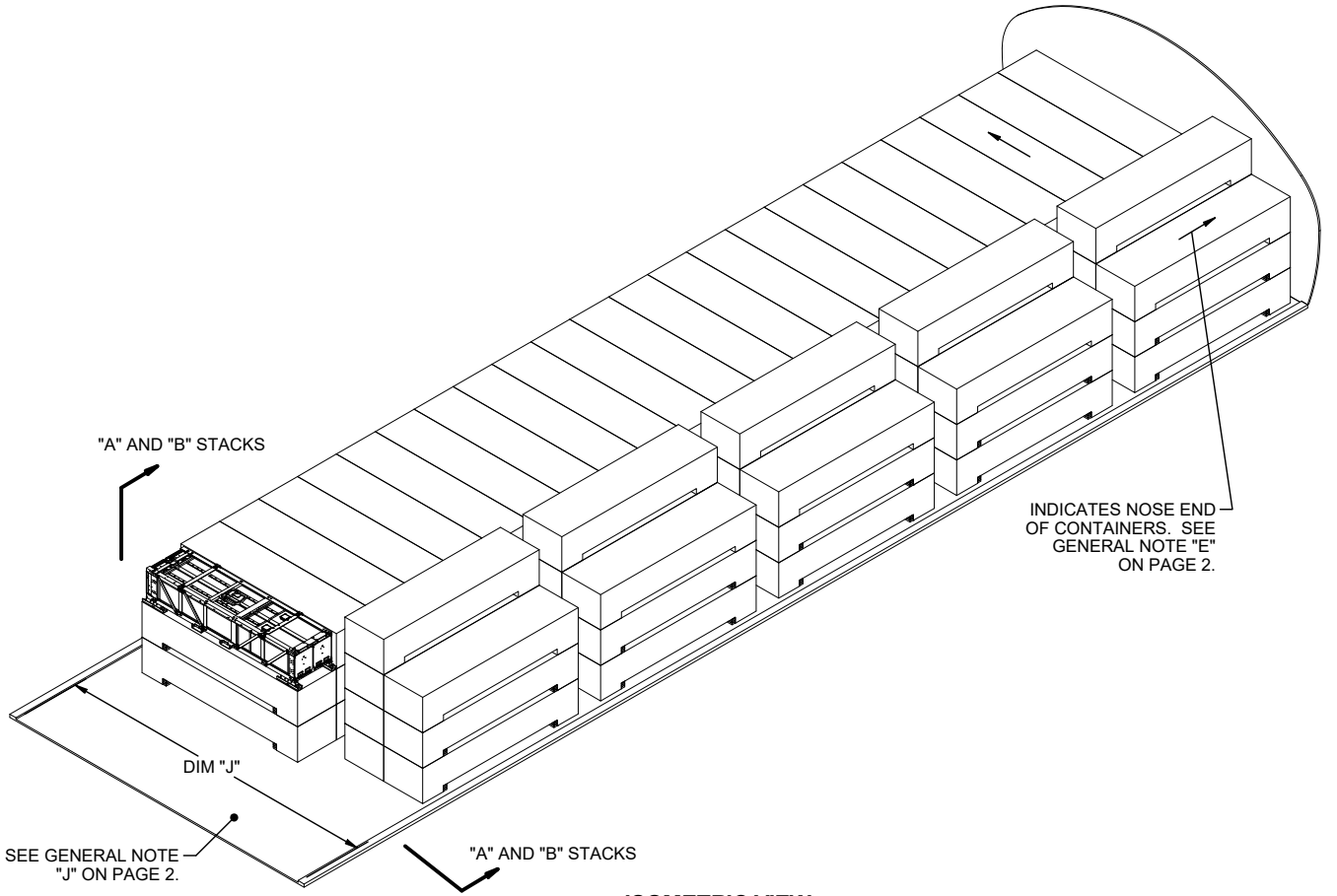
**STACK LAYER DESIGNATIONS**

POD SUPPORT ASSEMBLY. SEE GENERAL NOTE "L" ON PAGE 2 AND DETAIL ON PAGE 22.

(SEE "STACK IDENTIFICATION" ON PAGE 3 AND "CHART 2 - STACK CONFIGURATION" ON PAGE 11).

**TYPICAL STORAGE IN ARCHED OR ROUNDED ROOF MAGAZINES**





**ISOMETRIC VIEW**  
 OVAL MAGAZINE SHOWN  
 AS TYPICAL



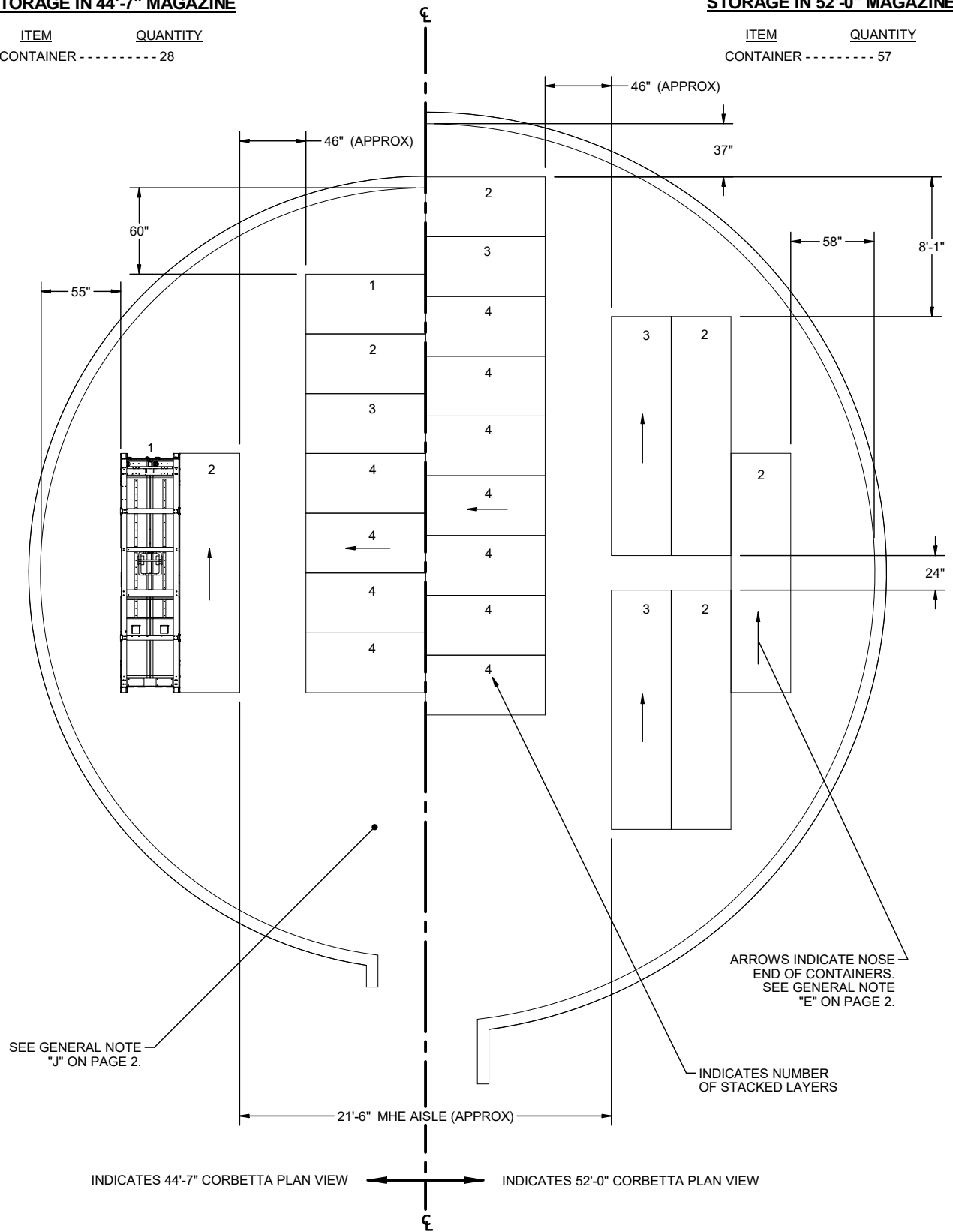


**STORAGE IN 44'-7" MAGAZINE**

**STORAGE IN 52'-0" MAGAZINE**

ITEM QUANTITY  
CONTAINER ----- 28

ITEM QUANTITY  
CONTAINER ----- 57

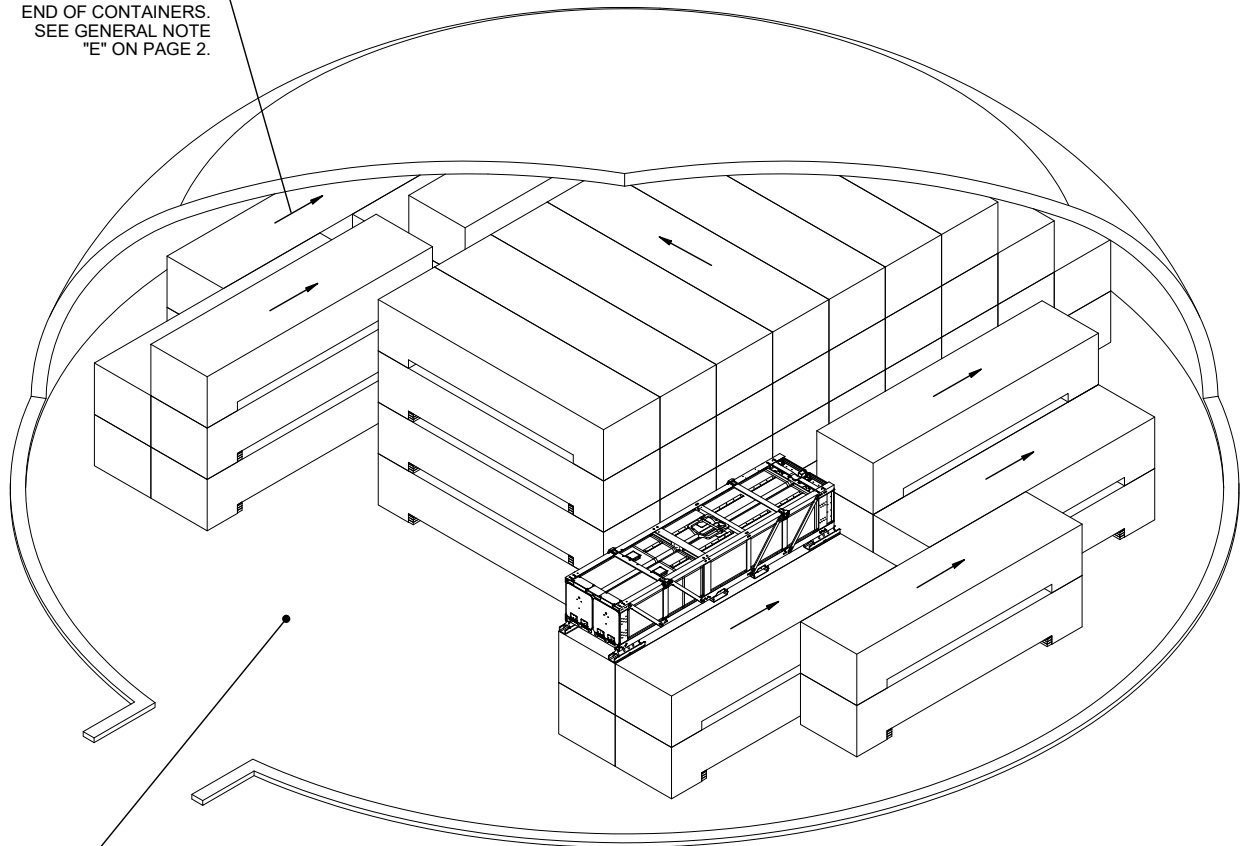


**PLAN VIEW**

THE RIGHT HAND PLAN VIEW INDICATES A 52'-0" CORBETTA MAGAZINE, AND THE LEFT HAND PLAN VIEW INDICATES A 44'-7" CORBETTA MAGAZINE. BOTH SIZE MAGAZINE LAYOUTS ARE SYMMETRICAL AROUND THE VERTICAL CENTER LINE.

**CORBETTA MAGAZINE**

ARROWS INDICATE NOSE  
END OF CONTAINERS.  
SEE GENERAL NOTE  
"E" ON PAGE 2.

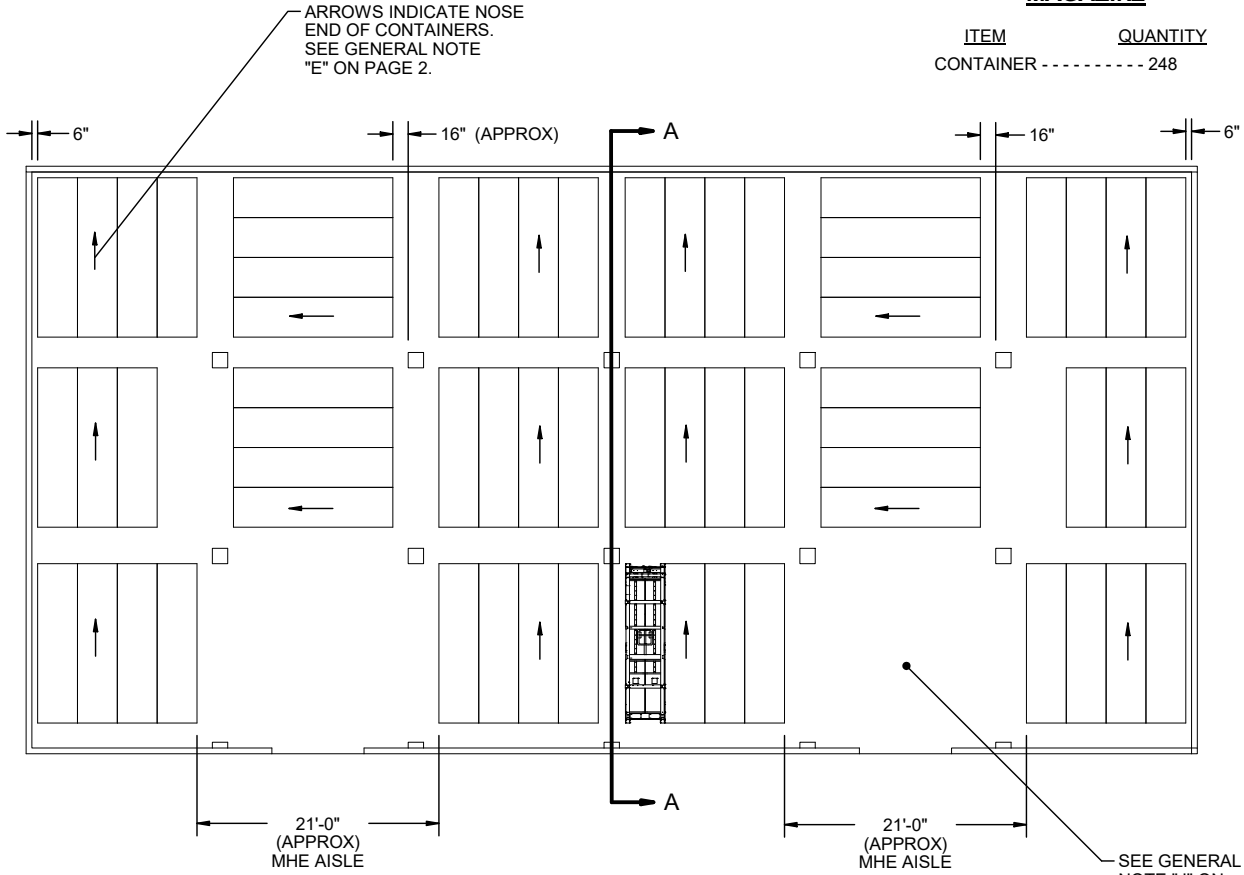


SEE GENERAL  
NOTE "J" ON  
PAGE 2.

**ISOMETRIC VIEW**  
(52' - 0" DIA MAGAZINE)

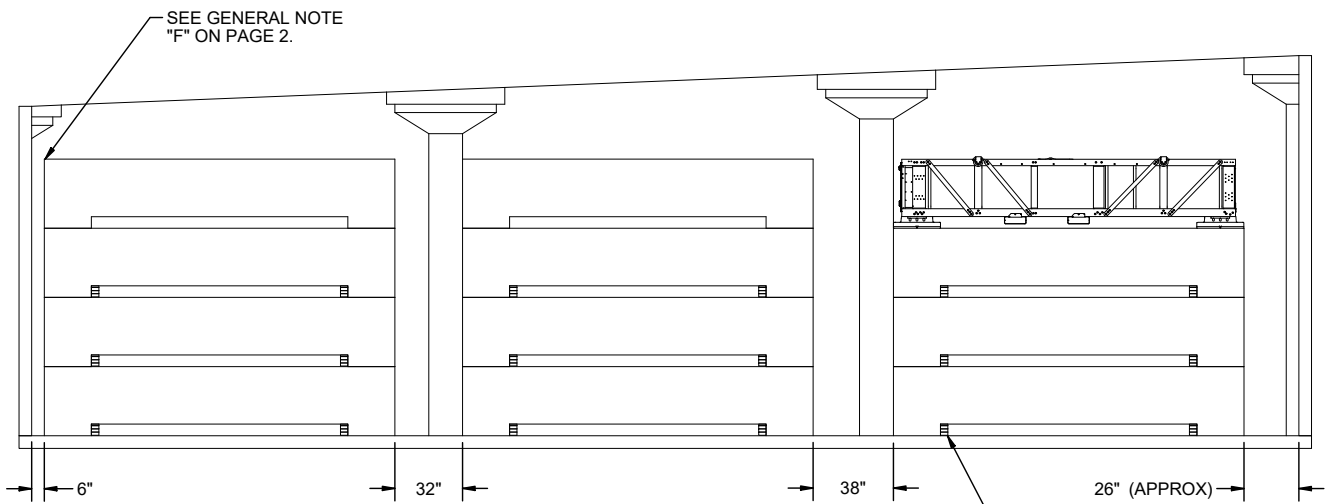
**STORAGE IN RECTANGULAR  
MAGAZINE**

ITEM	QUANTITY
CONTAINER	----- 248



**PLAN VIEW**

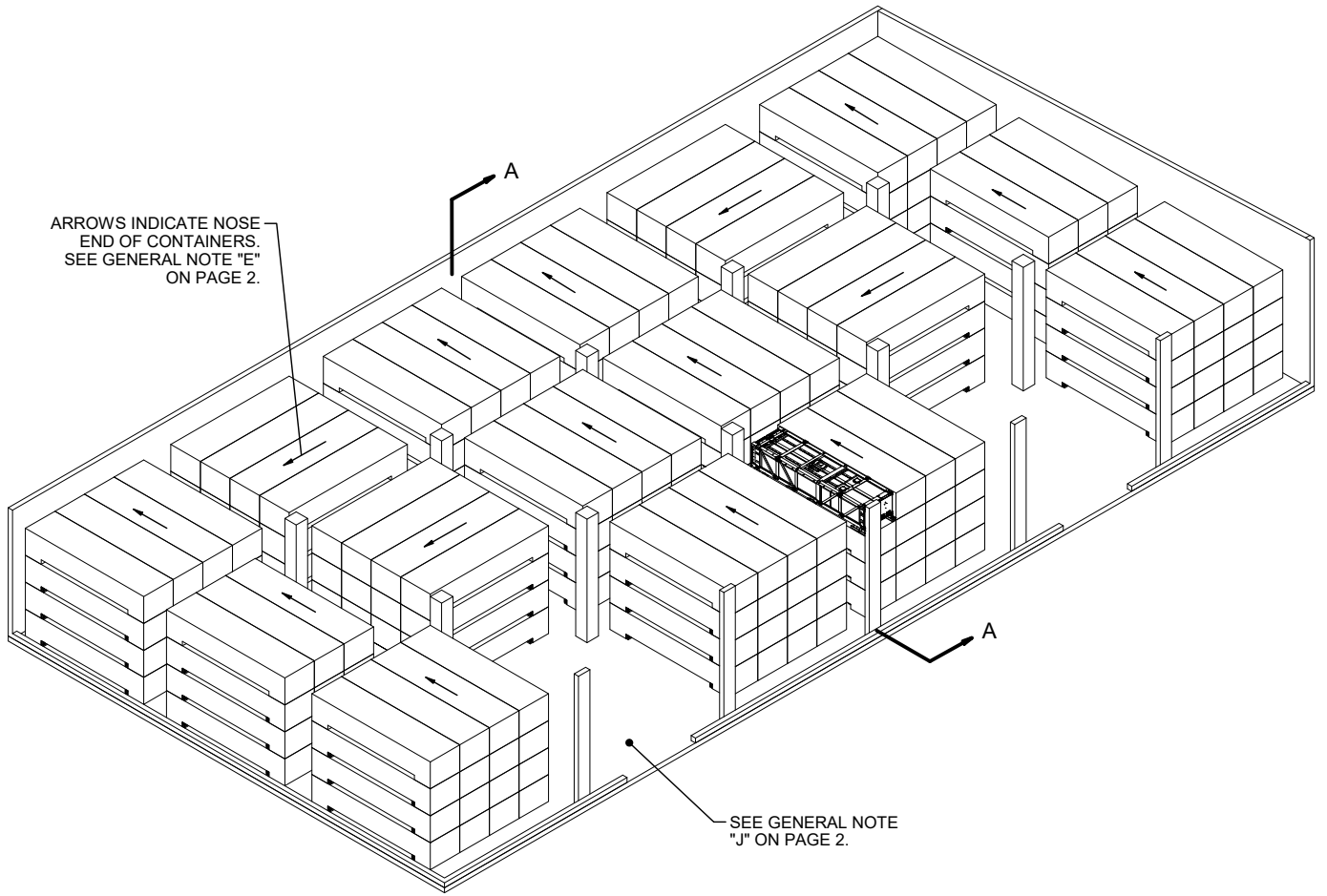
ALL CONTAINERS STACKED FOUR LAYERS HIGH.



**SECTION A-A**

POD SUPPORT ASSEMBLY. SEE GENERAL NOTE "L" ON PAGE 2 AND DETAIL ON PAGE 22.

ARROWS INDICATE NOSE  
END OF CONTAINERS.  
SEE GENERAL NOTE "E"  
ON PAGE 2.



SEE GENERAL NOTE  
"J" ON PAGE 2.

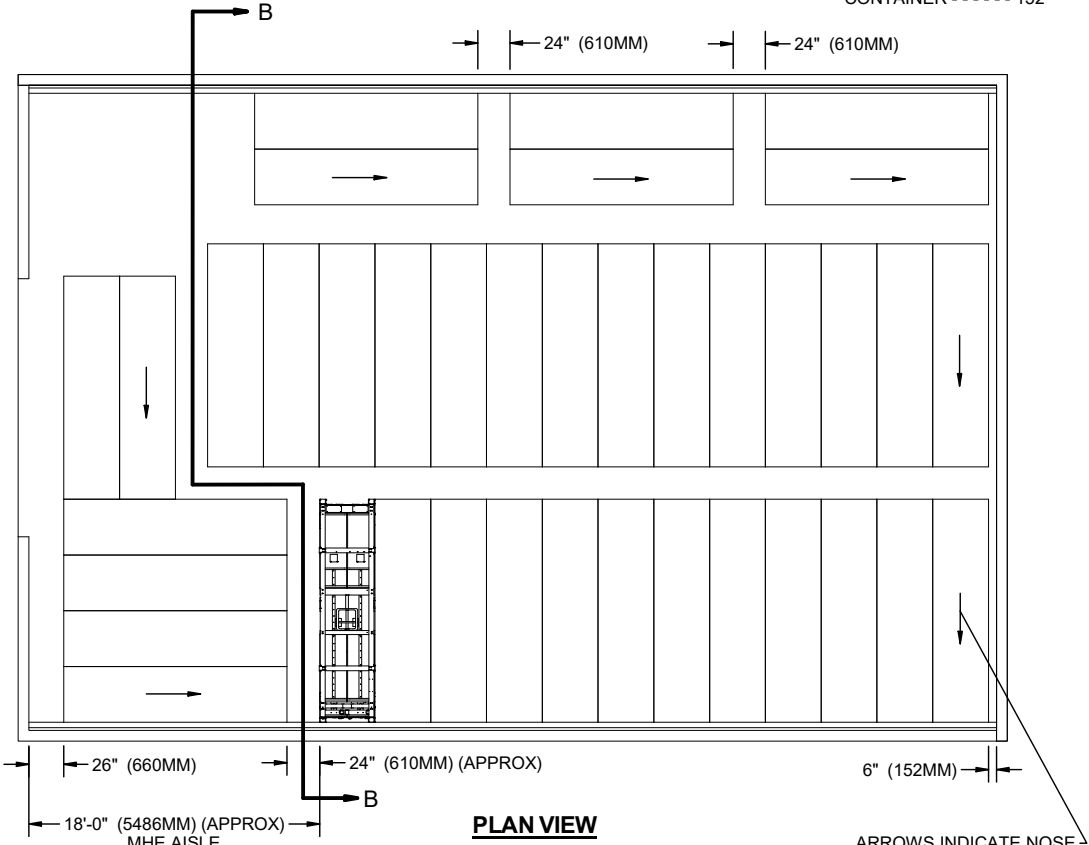
**ISOMETRIC VIEW**

(50'-0" MAGAZINE)

**100'-8" L X 50'-0" W RECTANGULAR MAGAZINE**

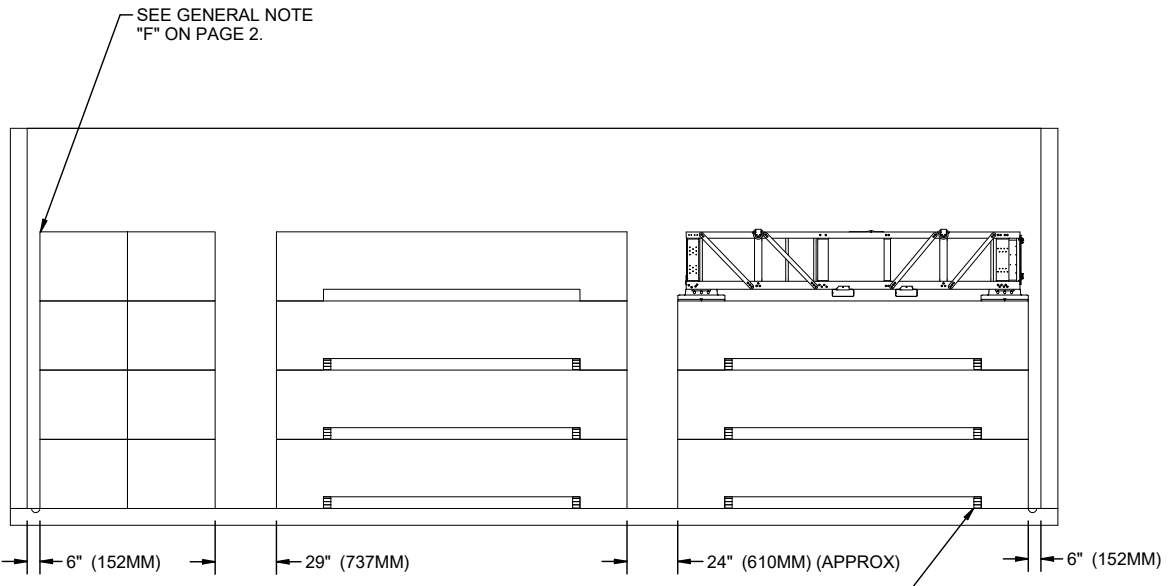
**STORAGE IN TYPE II BUNKER  
MAGAZINE**

ITEM QUANTITY  
CONTAINER ----- 152



ALL CONTAINERS STACKED  
FOUR LAYERS HIGH.

ARROWS INDICATE NOSE  
END OF THE CONTAINERS.  
SEE GENERAL NOTE "E"  
ON PAGE 2.

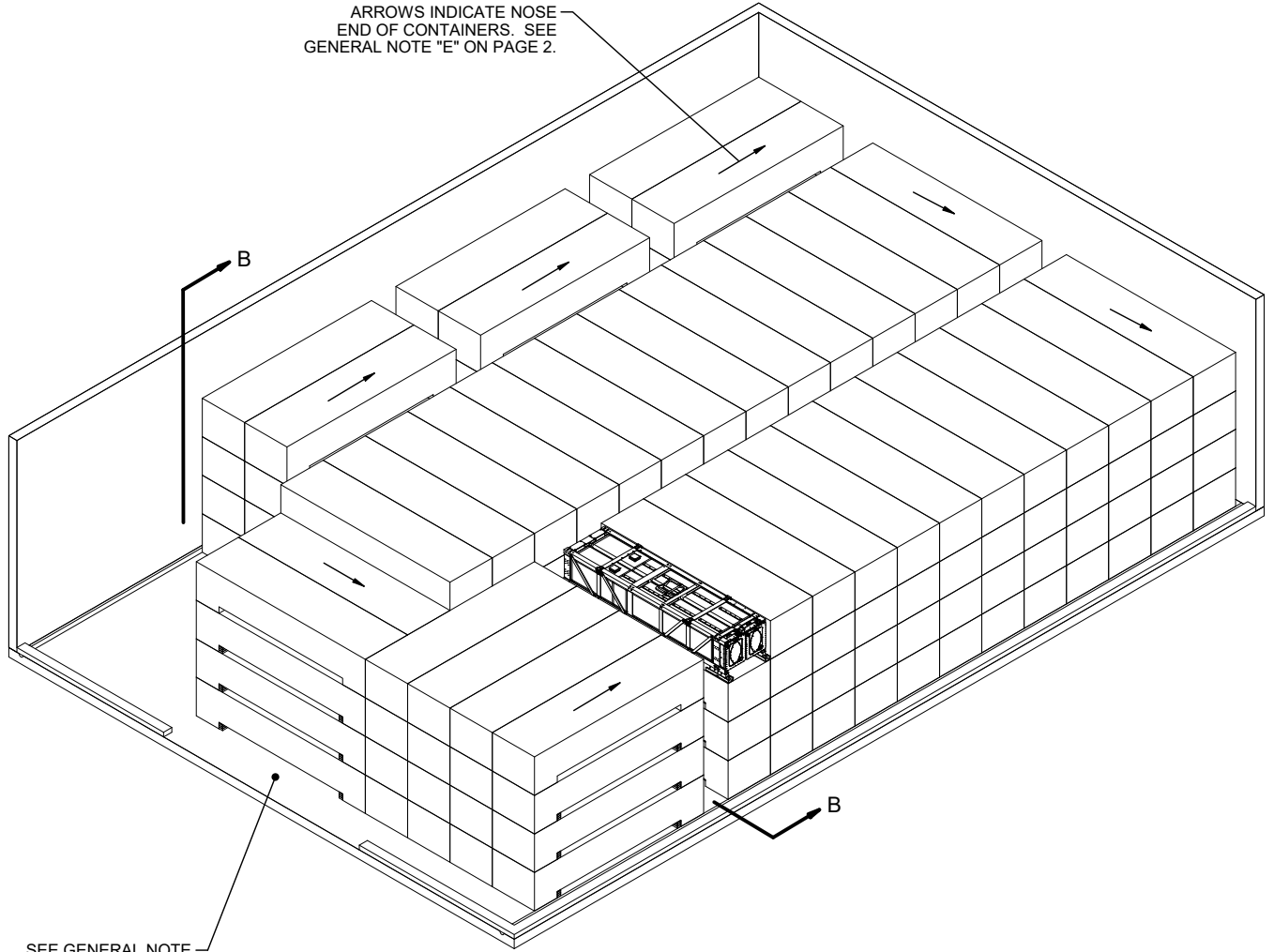


**SECTION B-B**

POD SUPPORT ASSEMBLY. SEE  
GENERAL NOTE "L" ON PAGE 2  
AND DETAIL ON PAGE 22.



ARROWS INDICATE NOSE  
END OF CONTAINERS. SEE  
GENERAL NOTE "E" ON PAGE 2.



SEE GENERAL NOTE  
"J" ON PAGE 2.

**ISOMETRIC VIEW**

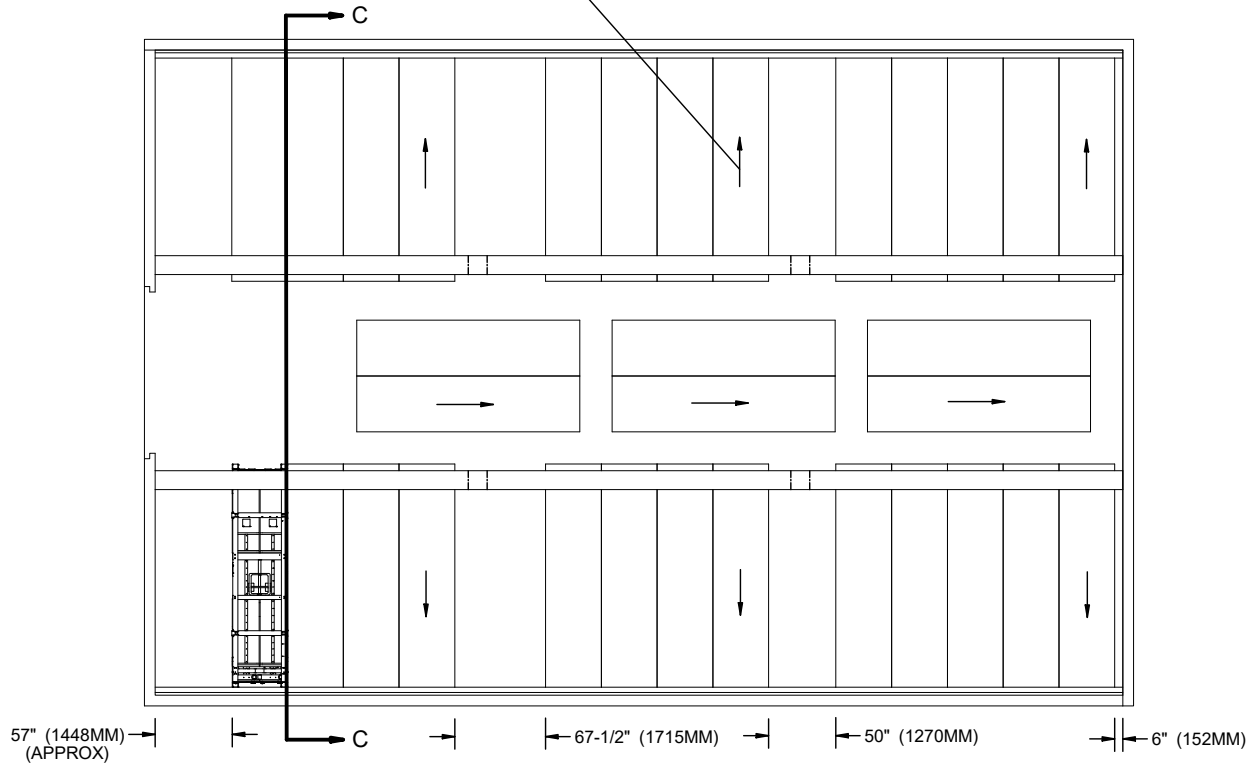
(TYPE II BUNKER MAGAZINE)

**60'-0" L X 40'-0" W X 15'-0" H TYPE II BUNKER MAGAZINE**

**STORAGE IN TYPE III BUNKER  
MAGAZINE**

ITEM	QUANTITY
CONTAINER	----- 96

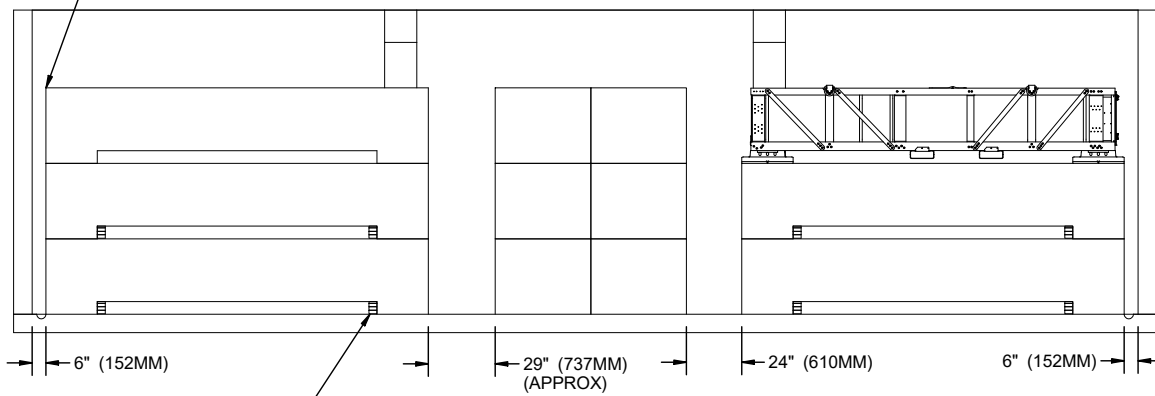
ARROWS INDICATE NOSE  
END OF CONTAINERS. SEE  
GENERAL NOTE "E" ON PAGE 2.



**PLAN VIEW**

ALL CONTAINERS STACKED  
THREE LAYERS HIGH.

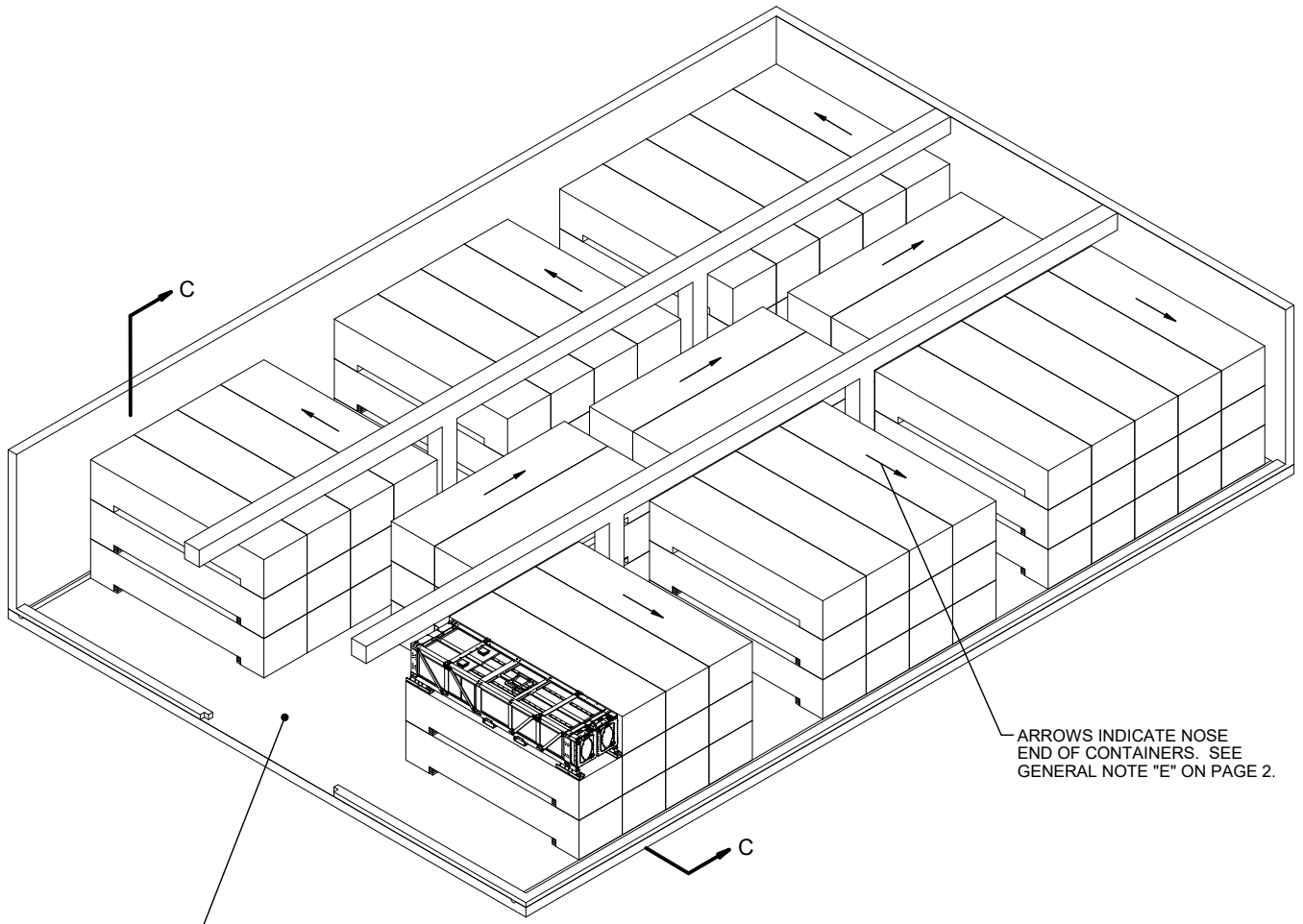
SEE GENERAL NOTE  
"F" ON PAGE 2.



POD SUPPORT ASSEMBLY. SEE  
GENERAL NOTE "L" ON PAGE 2  
AND DETAIL ON PAGE 22.

**SECTION C-C**

**60'-0" L X 40'-0" W X 11'-0" H TYPE III BUNKER MAGAZINE**



ARROWS INDICATE NOSE END OF CONTAINERS. SEE GENERAL NOTE "E" ON PAGE 2.

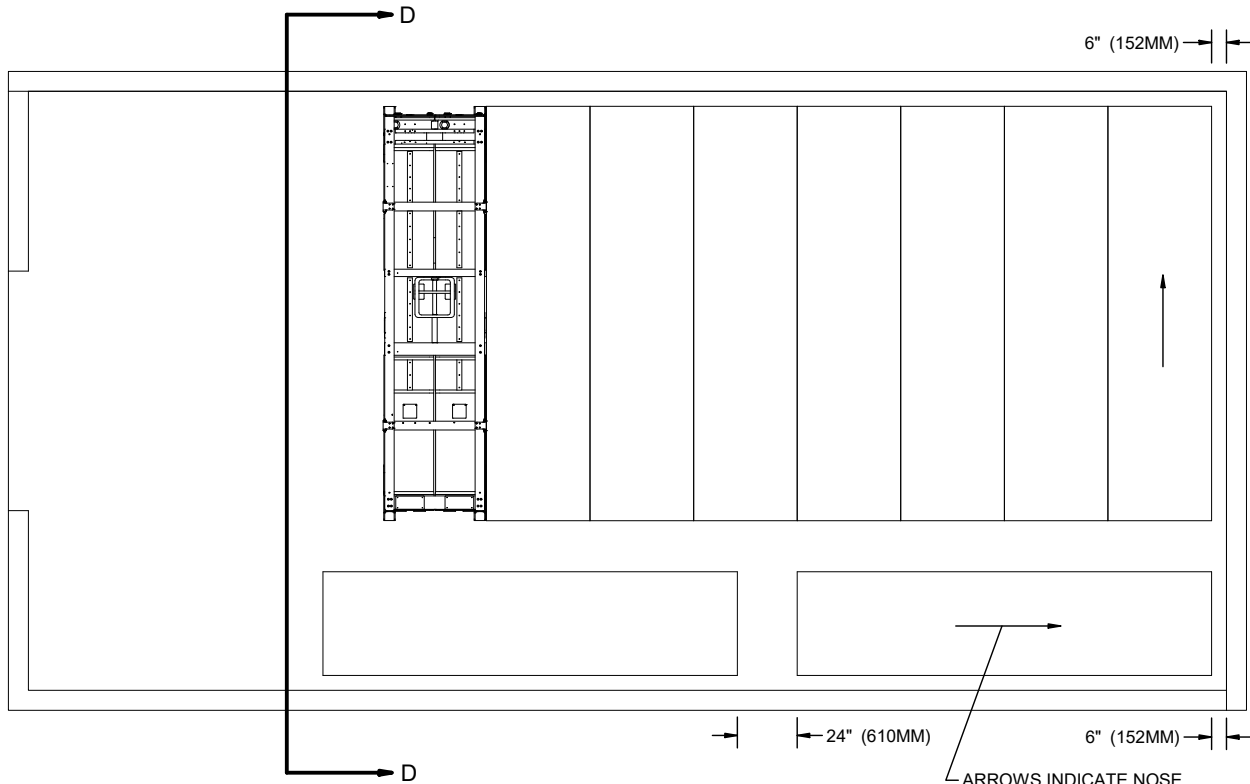
SEE GENERAL NOTE "J" ON PAGE 2.

**ISOMETRIC VIEW**  
(TYPE III BUNKER MAGAZINE)

**60'-0" L X 40'-0" W X 11'-0" H TYPE III BUNKER MAGAZINE**

**STORAGE IN TYPE IV BUNKER  
MAGAZINE**

ITEM	QUANTITY
CONTAINER -----	30

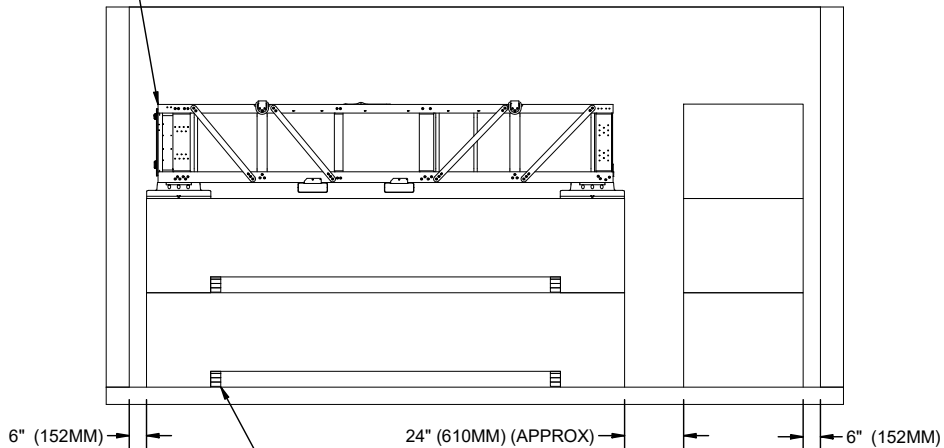


ARROWS INDICATE NOSE  
END OF CONTAINERS. SEE  
GENERAL NOTE "E" ON PAGE 2.

**PLAN VIEW**

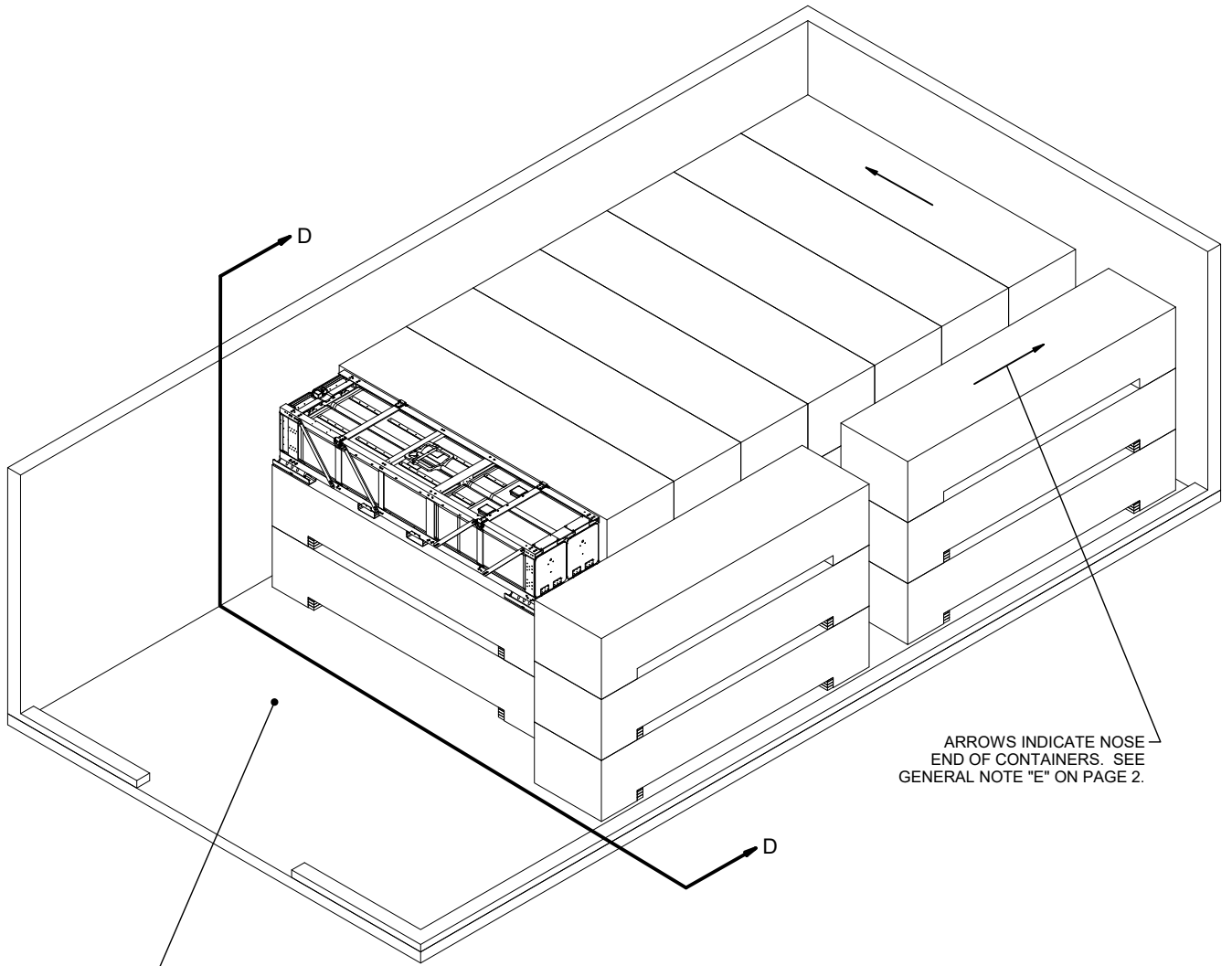
ALL CONTAINERS STACKED  
THREE LAYERS HIGH.

SEE GENERAL NOTE  
"F" ON PAGE 2.



POD SUPPORT ASSEMBLY. SEE  
GENERAL NOTE "L" ON PAGE 2  
AND DETAIL ON PAGE 22.

**SECTION D-D**



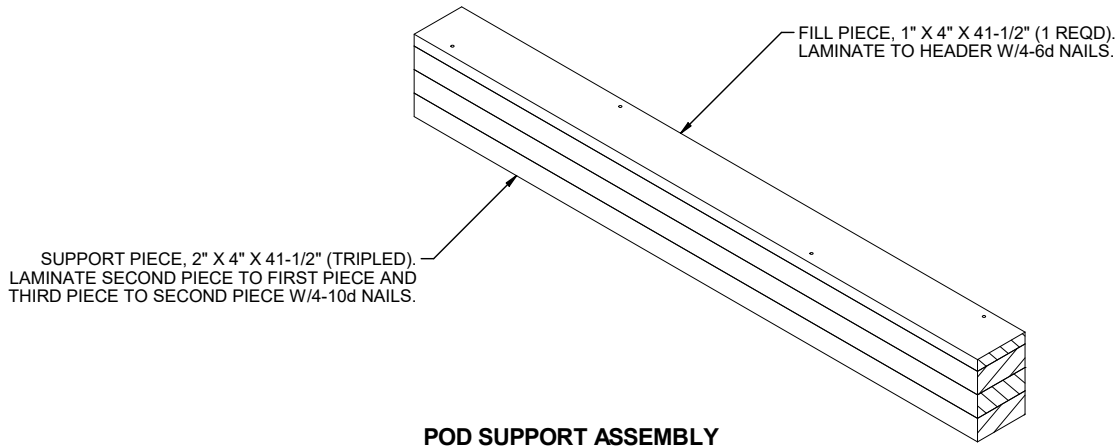
**ISOMETRIC VIEW**

(TYPE IV BUNKER MAGAZINE)

SEE GENERAL NOTE  
"J" ON PAGE 2.

ARROWS INDICATE NOSE  
END OF CONTAINERS. SEE  
GENERAL NOTE "E" ON PAGE 2.

**40'-0" L X 20'-0" W X 11'-0" H TYPE IV BUNKER MAGAZINE**



**POD SUPPORT ASSEMBLY**

SEE GENERAL NOTE "L" ON PAGE 2.

**SPECIAL NOTES:**

1. TWO POD SUPPORT ASSEMBLIES ARE REQUIRED UNDER THE FRAME OF EACH CONTAINER WHICH HAS ONE OR MORE CONTAINERS ON TOP. THE TOP CONTAINER IN A STACK, REGARDLESS OF THE NUMBER OF CONTAINERS IN THE STACK, WILL NOT HAVE POD SUPPORT ASSEMBLIES UNDER THE FRAME.
2. FOR STABILITY PURPOSES, IT IS DESIRED THAT THE SKIDS OF A LOWER CONTAINER SUPPORT A PORTION OF THE WEIGHT OF THE CONTAINERS ABOVE. THE THICKNESS OF THE POD SUPPORT ASSEMBLY SHOULD BE ADJUSTED AS NECESSARY TO PROVIDE THE PROPER SUPPORT BUT STILL MAINTAIN CONTACT BETWEEN THE METAL BOTTOM OF THE UPPER CONTAINER SKIDS AND THE TOP FRAME OF THE LOWER CONTAINER OR THE MAGAZINE FLOOR, AS APPLICABLE, TO PROVIDE PROPER ELECTRICAL CONDUCTIVITY. THE THICKNESS OF THE POD SUPPORT ASSEMBLY MAY BE REDUCED BY SUBSTITUTING A 1" X 4" X 41-1/2" FILL PIECE FOR ONE OF THE 2" X 4" X 41-1/2" SUPPORT PIECES. THE THICKNESS MAY BE INCREASED BY SUBSTITUTING A SUPPORT PIECE FOR A FILL PIECE OR BY ADDING A 1/4" OR THICKER PLYWOOD PIECE.