

JAVELIN

UNITIZATION PROCEDURES FOR GUIDED MISSILES PACKED ONE PER CYLINDRICAL PLASTIC CON- TAINER, UNITIZED SIX CONTAINERS PER 4-WAY ENTRY NATO PALLET

INDEX

<u>ITEM</u>	<u>PAGE(S)</u>
GENERAL NOTES AND MATERIAL SPECIFICATIONS - - - - -	2
PALLET UNIT DETAIL - - - - -	3
DETAILS - - - - -	4-6
TYPICAL FILLER ASSEMBLY - - - - -	5
LESS-THAN-FULL-PALLET-UNIT DETAILS - - - - -	6

DISTRIBUTION STATEMENT A:

APPROVED FOR PUBLIC RELEASE DISTRIBUTION IS UNLIMITED.

U.S. ARMY MATERIEL COMMAND DRAWING

<p style="text-align: center;">APPROVED U.S. ARMY AVIATION AND MISSILE COMMAND</p> <p>SCHMITT.ELIZABETH.1016576081 6081</p> <p><small>Digitally signed by SCHMITT.ELIZABETH.1016576081 DN: cn=US, ou=U.S. Government, ou=DoD, ou=PKI, ou=USA, cn=SCHMITT.ELIZABETH.1016576081 Reason: I am approving this document Date: 2010.11.22 09:40:59 -06'00'</small></p>	<p>CAUTION: VERIFY PRIOR TO USE AT WWW3.DAC.ARMY.MIL THAT THIS IS THE MOST CURRENT VERSION OF THIS DOCUMENT. THIS IS PAGE 1 OF 6.</p>																											
<p style="text-align: center;">APPROVED BY ORDER OF COMMANDING GENERAL, U.S. ARMY MATERIEL COMMAND</p> <p>CARNEY.GARY.BURTON.1038708038 708038</p> <p style="text-align: center;">U.S. ARMY DEFENSE AMMUNITION CENTER</p> <p><small>Digitally signed by CARNEY.GARY.BURTON.1038708038 DN: cn=US, ou=U.S. Government, ou=DoD, ou=PKI, ou=USA, cn=CARNEY.GARY.BURTON.1038708038 Date: 2011.01.12 11:28:07 -06'00'</small></p>	<table border="1" style="width: 100%; border-collapse: collapse;"> <tr> <td colspan="2" style="text-align: center;">DO NOT SCALE</td> <td colspan="2" style="text-align: center;">NOVEMBER 2004</td> </tr> <tr> <td style="width: 15%;">ENGINEER OR TECHNICIAN</td> <td style="width: 15%;">BASIC REV.</td> <td colspan="2" style="text-align: center;">LAURA FIEFFER CANH TRAN</td> </tr> <tr> <td colspan="2" style="vertical-align: top;"> <p style="text-align: center;">TRANSPORTATION ENGINEERING DIVISION</p> </td> <td style="width: 15%; vertical-align: top;"> <p style="text-align: center;">FIEFFER.LAURA.A.A.1230375727</p> <p><small>Digitally signed by FIEFFER.LAURA.A.1230375727 DN: cn=US, ou=U.S. Government, ou=DoD, ou=PKI, ou=USA, cn=FIEFFER.LAURA.A.1230375727 Date: 2010.10.26 15:38:16 -05'00'</small></p> </td> <td style="width: 15%; text-align: center; vertical-align: top;"> <p>REVISION NO. 1</p> <p>NOVEMBER 2010</p> </td> </tr> <tr> <td colspan="2" style="vertical-align: top;"> <p style="text-align: center;">VALIDATION ENGINEERING DIVISION</p> </td> <td style="width: 15%; vertical-align: top;"> <p style="text-align: center;">BARICKMAN.PHILIP.W.1230202202</p> <p><small>Digitally signed by BARICKMAN.PHILIP.W.1230202202 DN: cn=US, ou=U.S. Government, ou=DoD, ou=PKI, ou=USA, cn=BARICKMAN.PHILIP.W.1230202202 Date: 2010.11.04 14:42:07 -05'00'</small></p> </td> <td style="width: 15%; text-align: center; vertical-align: top;"> <p>SEE THE REVISION LISTING ON PAGE 3</p> </td> </tr> <tr> <td style="vertical-align: top;"> <p style="text-align: center;">ENGINEERING DIRECTORATE</p> </td> <td style="vertical-align: top;"> <p style="text-align: center;">BEAVER.JERRY.W.1230949952</p> <p><small>Digitally signed by BEAVER.JERRY.W.1230949952 DN: cn=US, ou=U.S. Government, ou=DoD, ou=PKI, ou=USA, cn=BEAVER.JERRY.W.1230949952 Date: 2010.10.29 14:04:07 -05'00'</small></p> </td> <td style="text-align: center; vertical-align: top;"> <table border="1" style="width: 100%; border-collapse: collapse;"> <tr> <td style="width: 15%;">CLASS</td> <td style="width: 15%;">DIVISION</td> <td style="width: 15%;">DRAWING</td> <td style="width: 15%;">FILE</td> </tr> <tr> <td style="text-align: center;">19</td> <td style="text-align: center;">48</td> <td style="text-align: center;">5275</td> <td style="text-align: center;">GM20JV3</td> </tr> </table> </td> </tr> </table>	DO NOT SCALE		NOVEMBER 2004		ENGINEER OR TECHNICIAN	BASIC REV.	LAURA FIEFFER CANH TRAN		<p style="text-align: center;">TRANSPORTATION ENGINEERING DIVISION</p>		<p style="text-align: center;">FIEFFER.LAURA.A.A.1230375727</p> <p><small>Digitally signed by FIEFFER.LAURA.A.1230375727 DN: cn=US, ou=U.S. Government, ou=DoD, ou=PKI, ou=USA, cn=FIEFFER.LAURA.A.1230375727 Date: 2010.10.26 15:38:16 -05'00'</small></p>	<p>REVISION NO. 1</p> <p>NOVEMBER 2010</p>	<p style="text-align: center;">VALIDATION ENGINEERING DIVISION</p>		<p style="text-align: center;">BARICKMAN.PHILIP.W.1230202202</p> <p><small>Digitally signed by BARICKMAN.PHILIP.W.1230202202 DN: cn=US, ou=U.S. Government, ou=DoD, ou=PKI, ou=USA, cn=BARICKMAN.PHILIP.W.1230202202 Date: 2010.11.04 14:42:07 -05'00'</small></p>	<p>SEE THE REVISION LISTING ON PAGE 3</p>	<p style="text-align: center;">ENGINEERING DIRECTORATE</p>	<p style="text-align: center;">BEAVER.JERRY.W.1230949952</p> <p><small>Digitally signed by BEAVER.JERRY.W.1230949952 DN: cn=US, ou=U.S. Government, ou=DoD, ou=PKI, ou=USA, cn=BEAVER.JERRY.W.1230949952 Date: 2010.10.29 14:04:07 -05'00'</small></p>	<table border="1" style="width: 100%; border-collapse: collapse;"> <tr> <td style="width: 15%;">CLASS</td> <td style="width: 15%;">DIVISION</td> <td style="width: 15%;">DRAWING</td> <td style="width: 15%;">FILE</td> </tr> <tr> <td style="text-align: center;">19</td> <td style="text-align: center;">48</td> <td style="text-align: center;">5275</td> <td style="text-align: center;">GM20JV3</td> </tr> </table>	CLASS	DIVISION	DRAWING	FILE	19	48	5275	GM20JV3
DO NOT SCALE		NOVEMBER 2004																										
ENGINEER OR TECHNICIAN	BASIC REV.	LAURA FIEFFER CANH TRAN																										
<p style="text-align: center;">TRANSPORTATION ENGINEERING DIVISION</p>		<p style="text-align: center;">FIEFFER.LAURA.A.A.1230375727</p> <p><small>Digitally signed by FIEFFER.LAURA.A.1230375727 DN: cn=US, ou=U.S. Government, ou=DoD, ou=PKI, ou=USA, cn=FIEFFER.LAURA.A.1230375727 Date: 2010.10.26 15:38:16 -05'00'</small></p>	<p>REVISION NO. 1</p> <p>NOVEMBER 2010</p>																									
<p style="text-align: center;">VALIDATION ENGINEERING DIVISION</p>		<p style="text-align: center;">BARICKMAN.PHILIP.W.1230202202</p> <p><small>Digitally signed by BARICKMAN.PHILIP.W.1230202202 DN: cn=US, ou=U.S. Government, ou=DoD, ou=PKI, ou=USA, cn=BARICKMAN.PHILIP.W.1230202202 Date: 2010.11.04 14:42:07 -05'00'</small></p>	<p>SEE THE REVISION LISTING ON PAGE 3</p>																									
<p style="text-align: center;">ENGINEERING DIRECTORATE</p>	<p style="text-align: center;">BEAVER.JERRY.W.1230949952</p> <p><small>Digitally signed by BEAVER.JERRY.W.1230949952 DN: cn=US, ou=U.S. Government, ou=DoD, ou=PKI, ou=USA, cn=BEAVER.JERRY.W.1230949952 Date: 2010.10.29 14:04:07 -05'00'</small></p>	<table border="1" style="width: 100%; border-collapse: collapse;"> <tr> <td style="width: 15%;">CLASS</td> <td style="width: 15%;">DIVISION</td> <td style="width: 15%;">DRAWING</td> <td style="width: 15%;">FILE</td> </tr> <tr> <td style="text-align: center;">19</td> <td style="text-align: center;">48</td> <td style="text-align: center;">5275</td> <td style="text-align: center;">GM20JV3</td> </tr> </table>	CLASS	DIVISION	DRAWING	FILE	19	48	5275	GM20JV3																		
CLASS	DIVISION	DRAWING	FILE																									
19	48	5275	GM20JV3																									

GENERAL NOTES

(GENERAL NOTES CONTINUED)

A. THIS DOCUMENT HAS BEEN PREPARED AND ISSUED IN ACCORDANCE WITH AR 740-1, AND AUGMENTS TM 743-200-1 (CHAPTER 5) AND CONFORMS TO MIL-STD-1660. THESE PROCEDURES ARE ONLY APPLICABLE TO FMS ITEMS, AND ARE NOT TO BE USED FOR U.S. STOCKS.

B. FOR DETAIL OF THE JAVELIN MISSILE ROUND SHIPPING CONTAINER, SEE MICOM DRAWING NO. 13303015.

CONTAINER DIMENSIONS - - - 55.50" LONG X 15.20" WIDE X
18.11" HIGH (17.36" STACKING)

CONTAINER GROSS WEIGHT - - - - - 88 LBS (APPROX)

CONTAINER MAX WEIGHT - - - - - 96 LBS

CONTAINER CUBE - - - - - 8.84 CU FT (APPROX)

C. **CAUTION:** THIS ITEM IS IN A "PROPULSIVE STATE" AND MUST BE LOADED ON THE PALLET WITH THE FORWARD END OF ALL CONTAINERS FACING IN ONE DIRECTION.

D. THE FOLLOWING AMC DRAWINGS ARE APPLICABLE FOR OUTLOADING AND STORAGE OF THE ITEMS COVERED BY THIS DRAWING.

CARLOADING - - - - - 19-48-5995-GM5JV2
TRUCKLOADING - - - - - 19-48-5996-GM11JV2
STORAGE - - - - - 19-48-5271-GM1-3-4-14-22JV2
END OPENING ISO CONTAINER - - - - - 19-48-5998-GM15JV5
MILVAN - - - - - 19-48-5997-GM15JV4
SIDE OPENING ISO CONTAINER - - - - - 19-48-5999-GM15JV6
CROP - - - - - 19-48-4906/11-CA1706
TACTICAL VEHICLE - - - - - 19-48-8218-GM17JV2

E. DIMENSIONS, CUBE AND WEIGHT OF A PALLET UNIT WILL VARY SLIGHTLY DEPENDING UPON THE ACTUAL DIMENSIONS OF THE BOXES AND THE WEIGHT OF THE SPECIFIC ITEM BEING UNITIZED.

F. DIMENSIONAL LUMBER SPECIFIED THROUGHOUT THIS PROCEDURAL DRAWING IS OF A NOMINAL SIZE, UNLESS OTHERWISE SPECIFIED. FOR EXAMPLE, 1" X 4" MATERIAL IS ACTUALLY 3/4" THICK BY 3-1/2" WIDE AND 2" X 4" MATERIAL IS ACTUALLY 1-1/2" THICK BY 3-1/2" WIDE.

G. CONVERSION TO METRIC EQUIVALENTS: DIMENSIONS WITHIN THIS DOCUMENT ARE EXPRESSED IN INCHES, AND WEIGHTS ARE EXPRESSED IN POUNDS. WHEN NECESSARY, THE METRIC EQUIVALENTS MAY BE COMPUTED ON THE BASIS OF ONE INCH EQUALS 25.4MM AND ONE POUND EQUALS 0.454 KG.

H. ALTHOUGH THE CONTAINERS DEPICTED IN THE UNIT LOAD ON PAGE 3 ARE CONSTRUCTED WITH INTERLOCKING DEVICES, THE INTERLOCKS WILL NOT FUNCTION PROPERLY UNLESS THE CONTAINERS ARE POSITIONED SO THAT THE PINS OF THE INTERLOCKS ARE FACING UPWARD. THIS ORIENTATION WILL AID IN THE PREVENTION OF CONTAINER MOVEMENT, BOTH LATEROALLY AND LONGITUDINALLY, DURING SHIPMENT OF THE UNIT LOAD.

J. WHEN ASSEMBLING A COMPLETE PALLET UNIT, CARE SHALL BE TAKEN TO ENSURE THAT THE CONTAINERS AND DUNNAGE ASSEMBLIES OR PIECES ARE EVENLY ALIGNED SO THAT THE SIDES AND ENDS OF THE PALLET UNIT DO NOT EXCEED A 1/2" TOLERANCE, RELATIVE TO THE PALLET.

K. INSTALL EACH TIEDOWN STRAP TO PASS UNDER THE TOP DECKBOARDS OF THE PALLET. NOTE THAT THE STRAPS WILL BE LOCATED AS SHOWN, THREADED THROUGH THE TOP CONTAINER HANDLES. STRAP ALIGNMENT MUST CONFORM WITH THE TOLERANCE STANDARDS SPECIFIED ON PAGE 5.

(CONTINUED AT RIGHT)

MATERIAL SPECIFICATIONS

PALLET - - - - - : NATO STANDARD, 1814KG. SEE DEFENCE CLOTHING AND TEXTILES AGENCY (S&TD) DRAWING A0/11130. SEE GENERAL NOTE "R".

LUMBER - - - - - : SEE TM 743-200-1 (DUNNAGE LUMBER) AND VOLUNTARY PRODUCT STANDARD PS 20. SEE GENERAL NOTE "R".

NAILS - - - - - : ASTM F1667; COMMON STEEL NAIL (NLCMS OR NLCMMS). ALT: UNDERLAYMENT NAIL (NLUL), PALLET NAIL (NLPL), OR COOLER NAIL (NLCL) OF SAME SIZE.

STRAPPING, STEEL - - - : ASTM D3953; FLAT STRAPPING, TYPE 1, HEAVY DUTY, FINISH B (GRADE 1 OR 2), SIZE 3/4" X .035" OR .031" OR .029".

SEAL, STRAP - - - - - : ASTM D3953; CLASS H, FINISH B (GRADE 1 OR 2) DOUBLE NOTCH TYPE, STYLE I, II, III OR IV. ALTERNATIVE SEAL FINISH: SIGNODE PAINTED SEALS MAY BE USED AS AN ALTERNATIVE IF ALL SURFACES ARE PAINTED. GRITTED BACKING IS NOT PERMITTED.

STAPLE - - - - - : ASTM F1667; STFCs-189, STFCs-198, STFCs-207, OR STFCs-216, 15/16" OR 1" CROWN WIDTH X 3/4" LEG LENGTH, ANY FINISH.

ANTI-CHAFING MATERIAL - - - - - : MIL-B-121 (OR EQUAL); NEUTRAL BARRIER MATERIAL.

L. WHEN APPLYING ANY STRAP, CARE MUST BE EXERCISED TO ASSURE THAT THE END OF THE STRAP ON THE UNDERSIDE OF THE JOINT EXTENDS AT LEAST 6" BEYOND THE SEAL. THIS EXTRA MINIMUM LENGTH OF STRAP IS REQUIRED TO PERMIT SUBSEQUENT TIGHTENING OF LOOSENED STRAPPING. RETENSIONING CAN BE ACCOMPLISHED WITHOUT REPLACING STRAPPING OR SPLICING STRAPPING THROUGH THE USE OF MANUAL OR PNEUMATIC FEEDWHEEL TYPE TENSIONING TOOL AND THE APPLICATION OF ONE ADDITIONAL SEAL.

M. IN ORDER TO OBTAIN COMPACT (SOUND) UNITS, ALL STRAPS SHALL BE LOCATED IN PROPER ALIGNMENT AND TENSIONED UNTIL THEY CUT INTO THE EDGE OF THE DUNNAGE ASSEMBLY AND THE PALLET DECK. AFTER TENSIONING, ALL STRAPS WILL BE SECURED USING ONE SEAL AND TWO PAIR OF NOTCHES PER SEAL. ALL STRAPPING MUST BE STRAIGHT WITHIN 2" ON ANY SURFACE OF THE UNITIZED LOAD I.E., TOP, BOTTOM, SIDES, OR ENDS THAT IT ENCOMPASSES.

N. REFER TO DAC DRAWING ACV00617 FOR APPROVED SOURCES FOR SEALLESS (CLIPLESS) SEALING TOOL. THESE APPROVED SEALING TOOLS CAN BE USED IN PLACE OF SEAL CURRENTLY SPECIFIED IN THE MATERIAL SPECIFICATIONS LISTED AT LEFT.

O. IF STRAP CUTTERS ARE SPECIFICALLY REQUIRED BY THE PROCURING ACTIVITY, REFER TO DARCOM DRAWING 19-48-4127-20P1000 FOR APPROPRIATE MEANS OF SECUREMENT TO THE PALLET UNIT.

P. DIMENSIONS GIVEN FOR DUNNAGE ASSEMBLIES AND THE PALLET DUNNAGE LOCATION WILL BE FIELD CHECKED PRIOR TO ASSEMBLY OF PALLET UNIT. CONTAINERS MUST FIT SNUGLY AGAINST THE DUNNAGE ASSEMBLIES.

Q. UNLESS OTHERWISE SPECIFIED, A PLUS-OR-MINUS 1/4" IS ALLOWED ON OVERALL DIMENSIONS OF ANY PIECE OF DUNNAGE OR DUNNAGE ASSEMBLY. HOWEVER, SIMILAR PIECES IN AN ASSEMBLY MUST BE WITHIN 1/8" OF THE SAME DIMENSION.

R. ALL NON-MANUFACTURED WOOD USED IN PALLETIZED LOAD SHALL BE HEAT TREATED AND MARKED TO SHOW CONFORMANCE TO THE INTERNATIONAL PLANT PROTECTION CONVENTION STANDARD (IPPC), ISPM-15. SEE DAC DRAWING ACV00831 FOR ISPM-15 CERTIFICATION MARKING AND PLACEMENT DETAILS.

S. ALL NAILS DRIVEN INTO THE DUNNAGE ASSEMBLIES, FILLER ASSEMBLIES, OR PALLET SHALL BE DRIVEN SO THAT THE NAILHEADS ARE FLUSH OR SLIGHTLY BELOW THE SURFACE OF THE PIECE THAT THEY ARE BEING DRIVEN THROUGH.

T. ANTI-CHAFING MATERIAL MAY BE INSTALLED AT POINTS OF CONTACT BETWEEN CONTAINERS, BETWEEN CONTAINERS AND DUNNAGE, AND BETWEEN CONTAINERS AND STEEL STRAPPING, TO PREVENT CHAFING DAMAGE TO CONTAINER AND MARKINGS.

U. A UNIT LOAD, SUCH AS THE LAST UNIT LOAD FOR AN AMMUNITION LOT, CAN BE ASSEMBLED WITH FEWER LAYERS THAN SPECIFIED FOR THE BASIC UNIT LOAD. THE UNIT LOAD CAN ALSO BE ASSEMBLED WITH A PARTIAL TOP LAYER PROVIDING IT IS TO BE SHIPPED WITHIN CONUS TO A DEPOT, DEPOT ACTIVITY, POST, CAMP, OR STATION. FOR CONUS OR FOREIGN MILITARY SALES (FMS) SHIPMENTS, HOWEVER, THE UNIT LOAD MUST NOT BE ASSEMBLED WITH A PARTIAL LAYER. EMPTY CONTAINERS OR FILLER ASSEMBLIES WILL BE USED TO ACHIEVE FULL-LAYER CONFIGURATION. FOR ADDITIONAL GUIDANCE, SEE GENERAL NOTE "V" AND THE DETAILS ON PAGES 5 AND 6.

V. IF LESS THAN SIX CONTAINERS ARE TO BE LOADED ON A PALLET, IT SHALL BE ACCOMPLISHED BY SUBSTITUTING FILLER ASSEMBLIES, AS DEPICTED ON PAGE 5, FOR ONE OR TWO OMITTED CONTAINERS, EXCEPT AS OTHERWISE STATED WITHIN GENERAL NOTE "U". HOWEVER, IF MORE THAN TWO CONTAINERS ARE TO BE OMITTED, A COMPLETE LAYER OF CONTAINERS MUST BE OMITTED. FILLER ASSEMBLIES WILL BE POSITIONED WITHIN THE UNIT LOAD AS DEPICTED IN THE DETAILS ON PAGE 6. **NOTE:** EMPTY OR REJECT CONTAINERS MAY BE USED IN PLACE OF FILLER ASSEMBLIES AS NECESSARY. WHEN (EMPTY) FILLER CONTAINERS ARE USED IN PLACE OF OMITTED CONTAINERS TO COMPLETELY FILL OUT A LAYER ON A PALLET, THEY WILL BE MARKED AS SPECIFIED IN ARDEC DRAWING NO. 12982865.

W. IF UNITIZING OPERATIONS ARE BEING PERFORMED IN SUPPORT OF A SHIPMENT OF ITEMS FOR TROOP USE AT A CAMP, POST OR STATION, AND, IF IN ADDITION TO FULL LAYER UNITS SPECIFIED IN GENERAL NOTE "U", A FEW LOOSE CONTAINERS ARE REQUIRED TO SATISFY THE QUANTITY REQUISITIONED, THE LOOSE CONTAINERS NEED NOT BE UNITIZED. HOWEVER, THE METHOD FOR BRACING AND STAYING OF THE LOOSE CONTAINERS WITHIN THE LOAD TO BE SHIPPED MUST COMPLY WITH THE METHOD SPECIFIED WITHIN THE APPLICABLE 19-48 SERIES OUTLOADING PROCEDURAL DRAWING.

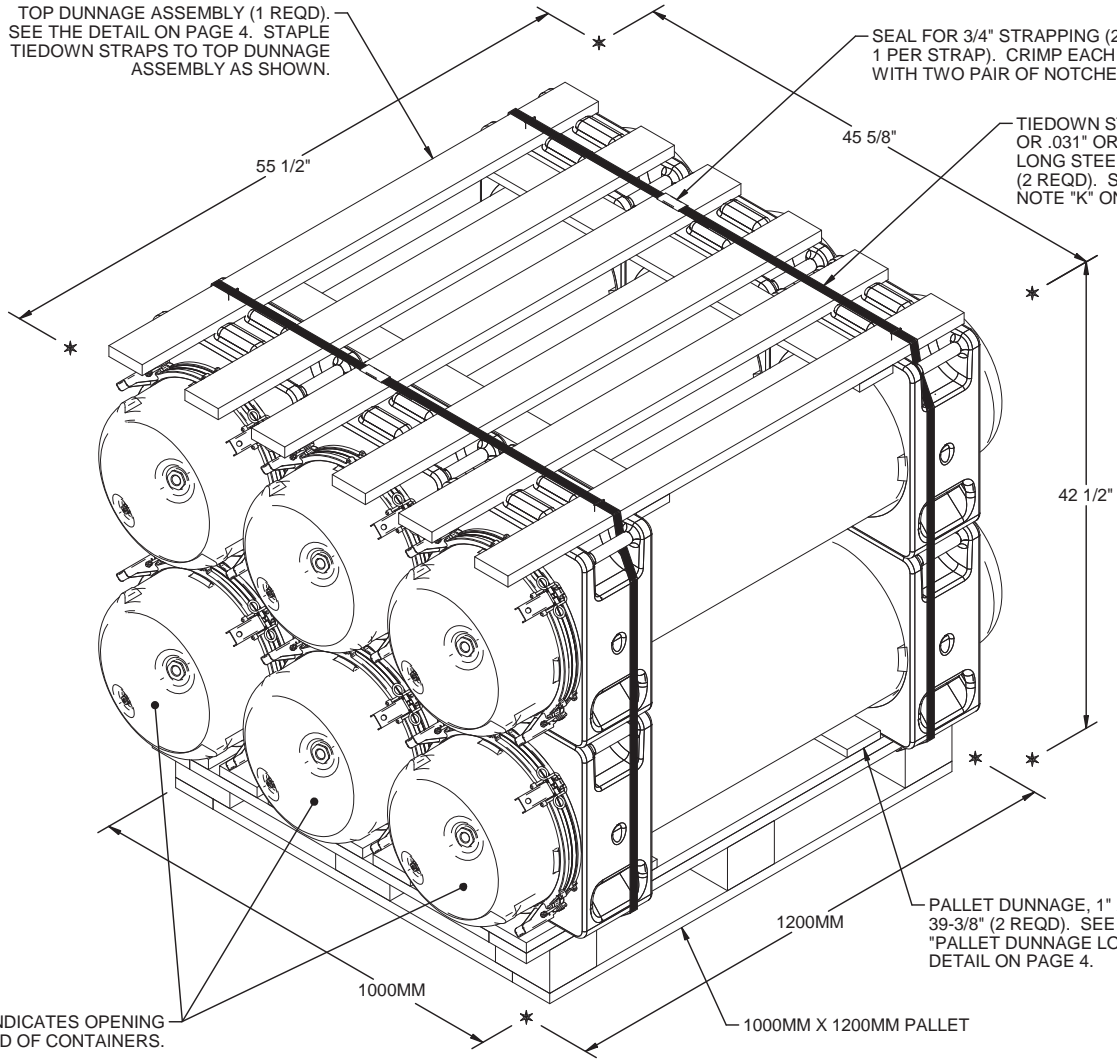
X. PALLETIZED UNITS OF MISSILES ARE LIMITED TO ONE LOT PER PALLET UNIT, EXCEPT WHERE REQUIRED BY BALLISTIC SAMPLE SHIPMENT OR TROOP USE AT POST, CAMP, OR STATION, OR AS REQUIRED WITHIN GOVERNMENT CONTRACT PRIOR TO GOVERNMENT ACCEPTANCE.

TOP DUNNAGE ASSEMBLY (1 REQD). SEE THE DETAIL ON PAGE 4. STAPLE TIEDOWN STRAPS TO TOP DUNNAGE ASSEMBLY AS SHOWN.

SEAL FOR 3/4" STRAPPING (2 REQD, 1 PER STRAP). CRIMP EACH SEAL WITH TWO PAIR OF NOTCHES.

TIEDOWN STRAP, 3/4" X .035" OR .031" OR .029" X 14'-8-1/4" LONG STEEL STRAPPING (2 REQD). SEE GENERAL NOTE "K" ON PAGE 2.

INDICATES OPENING END OF CONTAINERS.



PALLET UNIT

SEE GENERAL NOTE "E" ON PAGE 2.

REVISION

REVISION NO. 1, DATED NOVEMBER 2010, CONSISTS OF:

1. UPDATING DRAWING FORMAT.
2. UPDATING GENERAL NOTES.
3. UPDATING MATERIAL SPECIFICATIONS.

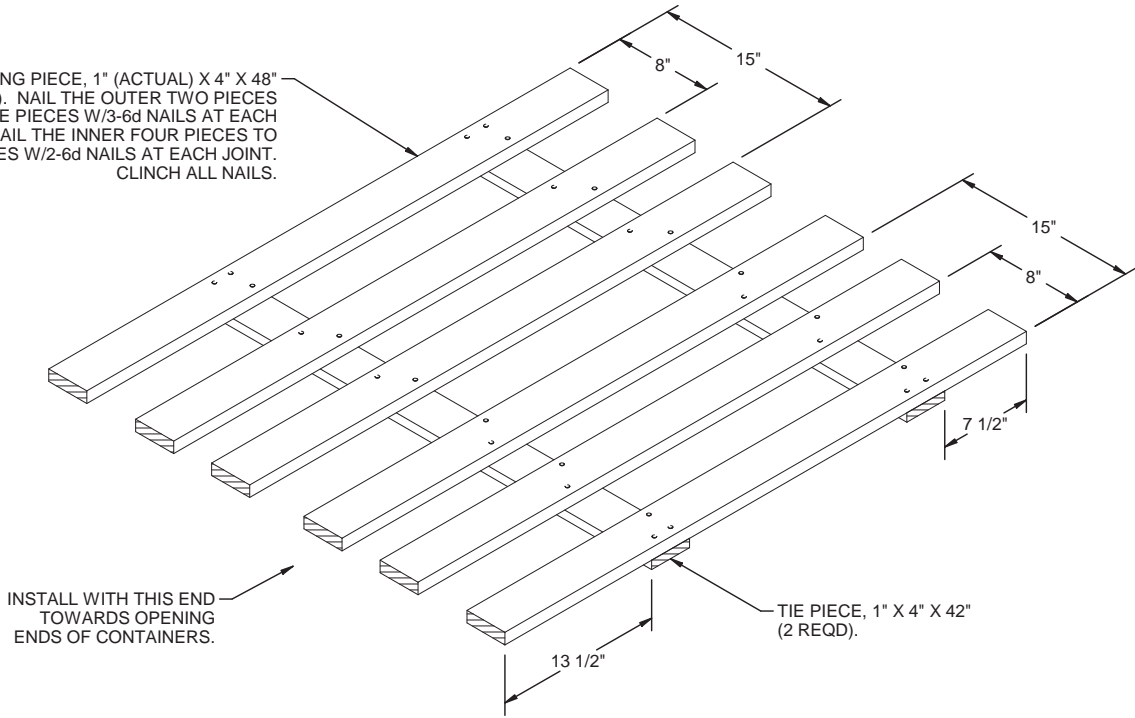
6 JAVELIN CONTAINERS (1 PER CONTAINER) @ 88 LBS	-----	528 LBS (APPROX)
DUNNAGE	-----	34 LBS
PALLET	-----	57 LBS

TOTAL WEIGHT	-----	619 LBS (APPROX)
CUBE	-----	62.3 CU FT (APPROX)

BILL OF MATERIAL

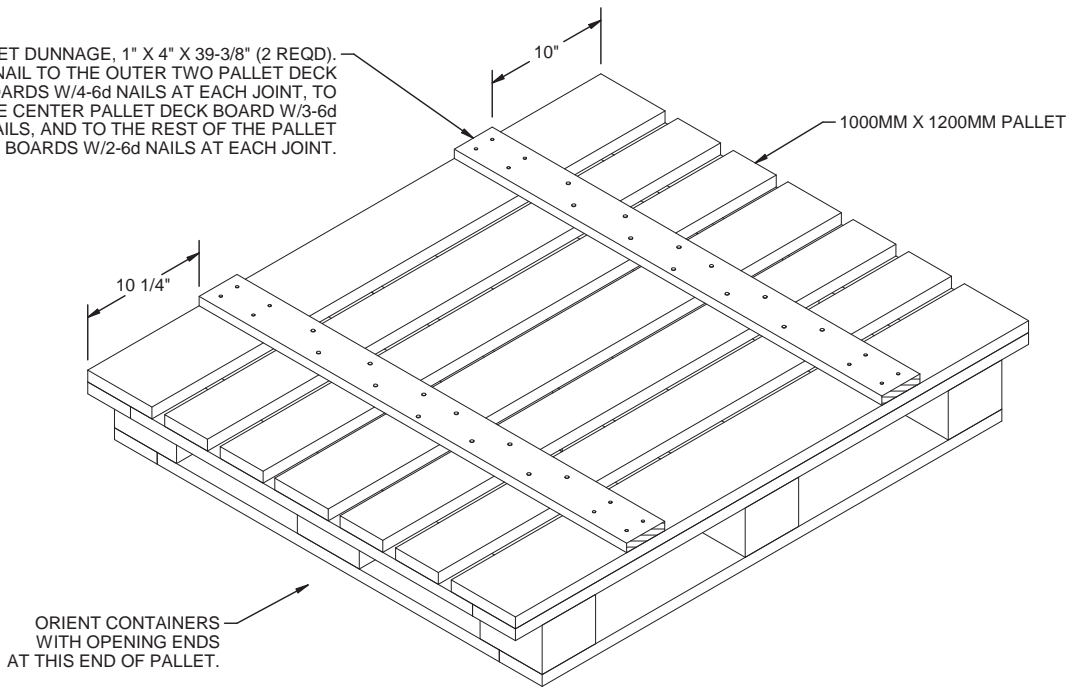
LUMBER	LINEAR FEET	BOARD FEET
1" X 4"	13.56	4.52
1" (ACTUAL) X 4"	24.00	10.67
NAILS	NO. REQD	POUNDS
6d (2")	66	0.39
PALLET, 1000MM X 1200MM - - - 1 REQD - - - - - 57 LBS		
STEEL STRAPPING, 3/4" - 29.38' REQD - - - - - 2.62 LBS		
SEAL FOR 3/4" STRAPPING - - - 2 REQD - - - - - NIL		
STAPLE, 15/16" X 3/4" - - - - 4 REQD - - - - - NIL		

BEARING PIECE, 1" (ACTUAL) X 4" X 48"
(6 REQD). NAIL THE OUTER TWO PIECES
TO THE TIE PIECES W/3-6d NAILS AT EACH
JOINT. NAIL THE INNER FOUR PIECES TO
THE TIE PIECES W/2-6d NAILS AT EACH JOINT.
CLINCH ALL NAILS.



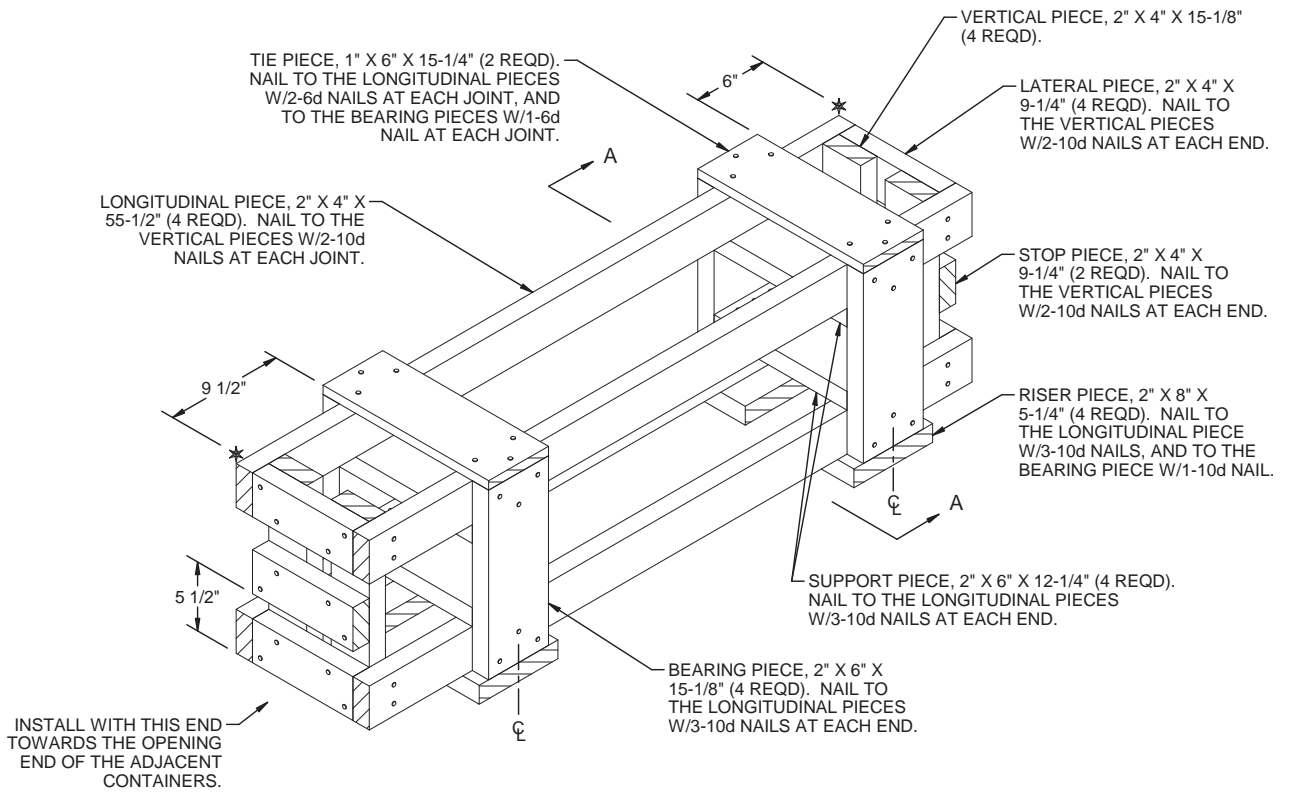
TOP DUNNAGE ASSEMBLY

PALLET DUNNAGE, 1" X 4" X 39-3/8" (2 REQD).
NAIL TO THE OUTER TWO PALLET DECK
BOARDS W/4-6d NAILS AT EACH JOINT, TO
THE CENTER PALLET DECK BOARD W/3-6d
NAILS, AND TO THE REST OF THE PALLET
DECK BOARDS W/2-6d NAILS AT EACH JOINT.



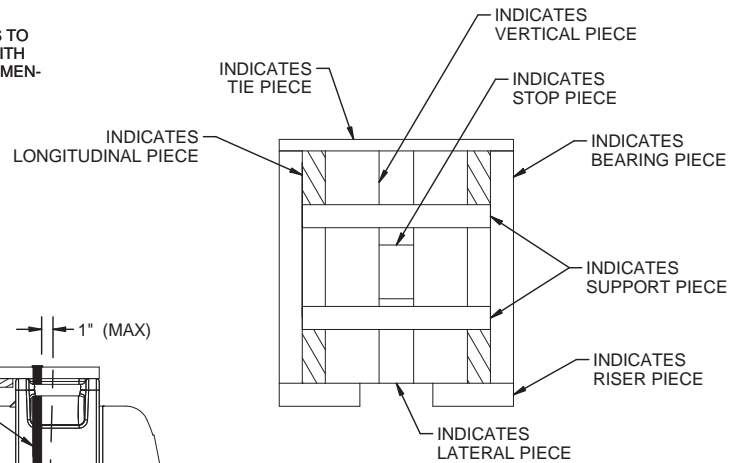
PALLET DUNNAGE LOCATION

NOTE: THE QUANTITY OF NAILS USED TO SECURE THE PALLET DUNNAGE
DEPICTED ABOVE MAY BE INCREASED, IF DESIRED. DO NOT, HOWEVER,
EXCEED 4-6d NAILS PER DECK BOARD/PALLET DUNNAGE JOINT.

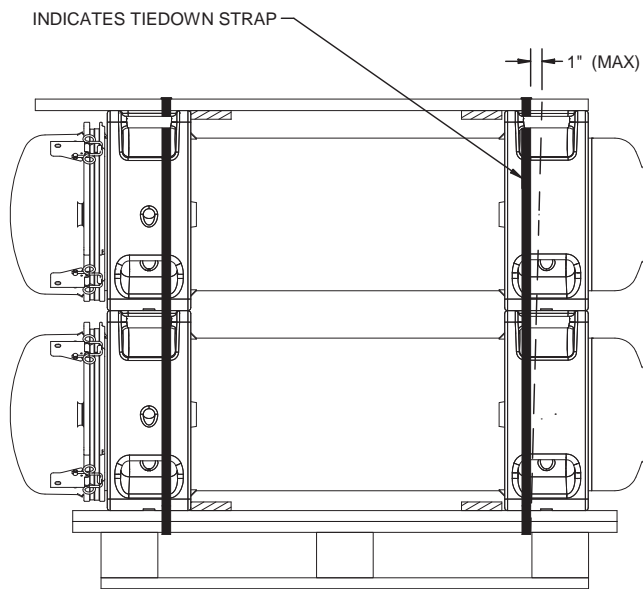


FILLER ASSEMBLY

THIS ASSEMBLY IS TO BE USED WHEN ONE CONTAINER IS TO BE OMITTED FROM A PALLET UNIT OR IN COMBINATION WITH OTHER FILLER ASSEMBLIES. **NOTE:** FILLER ASSEMBLY DIMENSIONS MUST BE FIELD CHECKED PRIOR TO ASSEMBLY.



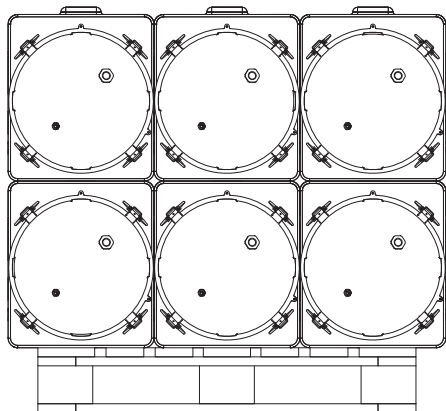
VIEW A-A



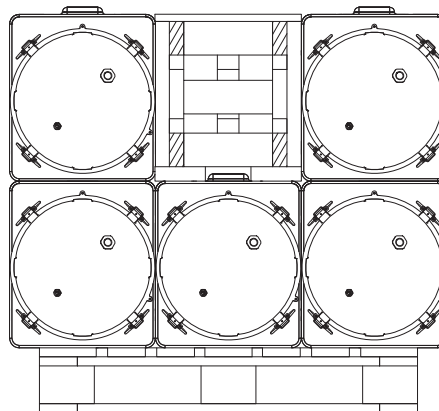
STRAP ALIGNMENT TOLERANCE

TIEDOWN STRAPS MUST BE WITHIN 1" OF VERTICAL ALIGNMENT.

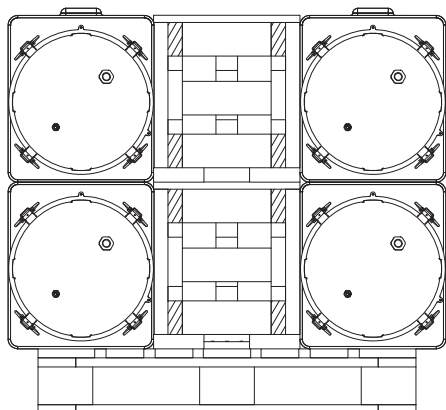
NOTE: ALL DUNNAGE AND STRAPPING HAVE BEEN OMITTED FROM THE SIX PALLET UNITS BELOW FOR CLARITY PURPOSES.



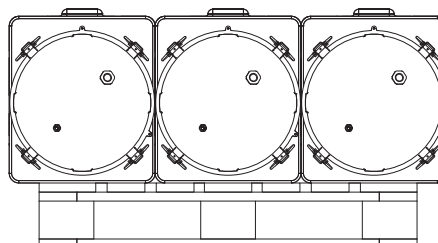
FULL PALLET UNIT



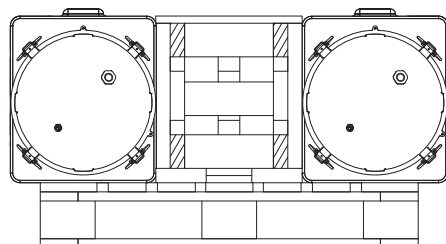
PALLET UNIT MINUS ONE CONTAINER



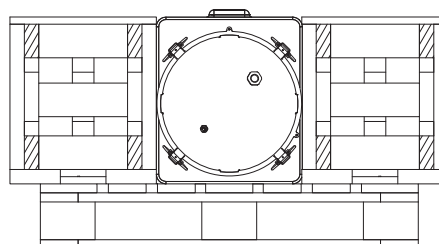
PALLET UNIT MINUS TWO CONTAINERS



PALLET UNIT MINUS THREE CONTAINERS



PALLET UNIT MINUS FOUR CONTAINERS



PALLET UNIT MINUS FIVE CONTAINERS

NOTE: THE "PROCEDURES FOR SHIPMENT OF LEFTOVER CONTAINERS" DEPICTED IN THE PERTINENT OUTLOADING DRAWINGS MAY BE USED TO TRANSPORT TWO LEFTOVER CONTAINERS INSTEAD OF THE PROCEDURES SHOWN ABOVE. SEE GENERAL NOTE "W" ON PAGE 2.

NOTE: THE "PROCEDURES FOR SHIPMENT OF LEFTOVER CONTAINERS" DEPICTED IN THE PERTINENT OUTLOADING DRAWINGS MAY BE USED TO TRANSPORT TWO LEFTOVER CONTAINERS INSTEAD OF THE PROCEDURES SHOWN ABOVE. SEE GENERAL NOTE "W" ON PAGE 2.