

PATRIOT


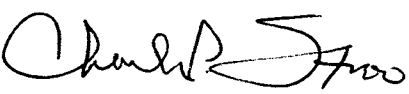
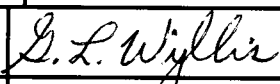
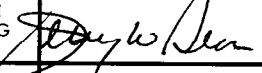
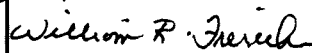
OUTDOOR STORAGE IN MISSILE STORAGE SHEDS[†] OF COMPLETE ROUNDS PACKED IN MISSILE CANISTER (SHIPPING, STORAGE AND LAUNCH CONTAINER)

INDEX

<u>ITEM</u>	<u>PAGE(S)</u>
GENERAL NOTES AND MATERIAL SPECIFICATIONS - - - - -	2
CANISTER DETAIL - - - - -	3
TYPICAL STORAGE PROCEDURES - - - - -	4-5

[†] THE STORAGE PROCEDURES SHOWN HEREIN ARE ONLY APPLICABLE TO CANISTERS STORED IN MISSILE STORAGE SHEDS LOCATED AT RED RIVER MUNITIONS CENTER THAT WERE CONSTRUCTED UNDER RRAD PROJECT NUMBER PR 10-5.

U.S. ARMY MATERIEL COMMAND DRAWING

APPROVED, U.S. ARMY AVIATION AND MISSILE COMMAND 	CAUTION: VERIFY PRIOR TO USE AT WWW.DAC.ARMY.MIL/DET THAT THIS IS THE MOST CURRENT VERSION OF THIS DOCUMENT. THIS IS PAGE 1 OF 6.			
	DO NOT SCALE		MAY 2002	
	ENGINEER OR TECHNICIAN	BASIC REV.	LAURA FIEFFER	
APPROVED BY ORDER OF COMMANDING GENERAL, U.S. ARMY MATERIEL COMMAND 	TRANSPORTATION ENGINEERING DIVISION			
	VALIDATION ENGINEERING DIVISION		TESTED	
U.S. ARMY DEFENSE AMMUNITION CENTER	ENGINEERING DIRECTORATE			
	CLASS	DIVISION	DRAWING	FILE
	19	48	5274	GM21PA1

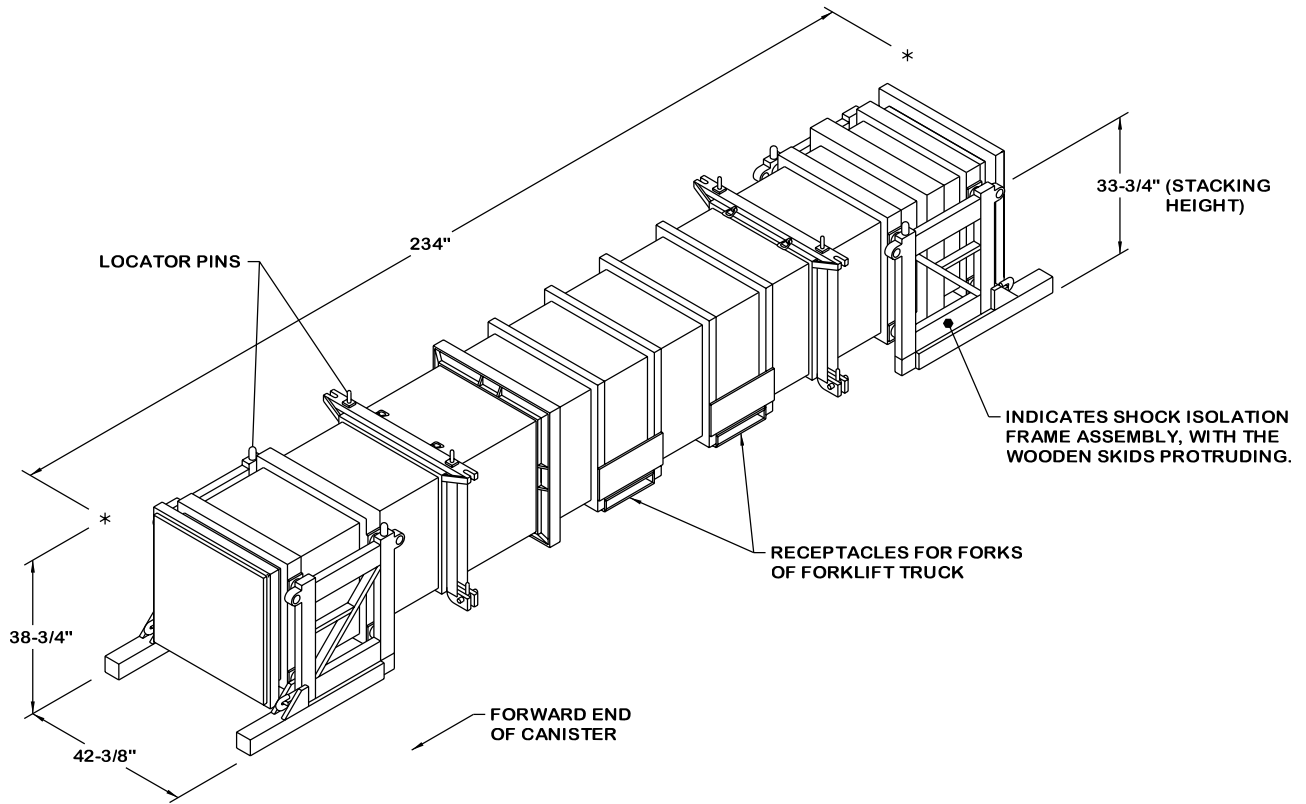
GENERAL NOTES

- A. THIS DOCUMENT HAS BEEN PREPARED AND ISSUED IN ACCORDANCE WITH AR 740-1 AND AUGMENTS TM 743-200-1 (CHAPTER 5).
- B. THE STORAGE PROCEDURES SPECIFIED HEREIN ARE APPLICABLE TO PATRIOT MISSILES PACKED IN MISSILE CANISTERS. SUBSEQUENT REFERENCE TO CANISTER MEANS THE CANISTER WITH MISSILE ITEMS.
- C. FOR DETAILS OF THE CANISTER, REFER TO AMCOM DRAWING 11450000, AND TO PAGE 3 OF THIS DRAWING.
- D. THE STORAGE PROCEDURES DEPICTED WITHIN THIS DOCUMENT ARE APPLICABLE FOR STORAGE IN MISSILE STORAGE SHEDS (RRAD PROJECT NUMBER PR 10-95) AT THE RED RIVER MUNITIONS CENTER ONLY.
- E. AISLE DIMENSIONS SHOWN FOR STORAGE PROCEDURES IN MISSILE STORAGE SHEDS MAY BE ADJUSTED, HOWEVER AN 18" ACCESS AISLE IS REQUIRED AT THE REAR OF THE CANISTER FOR INSPECTION PURPOSES.
- F. CANISTERS SHOULD ALL BE STORED WITH THE REAR OF THE CANISTER FACING IN ONE DIRECTION TO ALLOW EASY ACCESS FOR INSPECTION.
- G. CAUTION: THE ALLOWABLE "EXPLOSIVE LIMIT" ESTABLISHED FOR A MISSILE STORAGE SHED IS NOT TO BE EXCEEDED. THIS LIMITATION MAY REQUIRE A QUANTITY REDUCTION FROM THE STORAGE AS SHOWN.
- H. CANISTERS MUST NOT CONTACT THE WALLS OR COLUMNS OF A MISSILE STORAGE SHED.
- J. THE MISSILE CANISTER CAN BE STORED WITH THE SHOCK ISOLATION FRAME ASSEMBLIES OUTWARD OR REVERSED, AS DESIRED.
- K. THE RAILROAD TIMBERS SPECIFIED IN THE MATERIAL SPECIFICATIONS BELOW MUST BE SOUND. DO NOT USE DETERIORATED OR DAMAGED TIMBERS.
- L. CAUTION: DO NOT POSITION THE CANISTERS WITHIN 12" OF THE ENDS OF THE RAILROAD TIMBERS. TO MAKE THIS EASILY IDENTIFIABLE, EACH OF THE RAILROAD TIMBERS DEPICTED IN THIS DRAWING, INTERNAL TO A STACK OR EXTERNAL, MUST BE PAINTED ON THE LAST 12" OF THE TIMBER WITH A BRIGHT COLORED WATERPROOF PAINT. ALSO, RAILROAD TIMBERS MUST BE INSPECTED PERIODICALLY TO ENSURE SOUNDNESS. REPLACE TIMBERS AS NEEDED TO ENSURE STACK STABILITY.
- M. CAUTION: DO NOT STACK CANISTERS MORE THAN FOUR HIGH. CANISTER STACKS ADJACENT TO THE REAR WALL OF THE MISSILE STORAGE SHED WILL NOT BE STACKED MORE THAN THREE HIGH.
- N. OTHER COMPATIBLE ITEMS MAY BE STORED IN A MISSILE STORAGE SHED THAT IS PARTIALLY FILLED WITH THE DESIGNATED ITEM.
- O. PORTIONS OF THE MISSILE STORAGE SHEDS, SUCH AS ONE END WALL AND THE ROOF, HAVE NOT BEEN SHOWN IN THE ISOMETRIC VIEW FOR CLARITY PURPOSES.
- P. CONVERSION TO METRIC EQUIVALENTS: DIMENSIONS WITHIN THIS DOCUMENT ARE EXPRESSED IN INCHES AND WEIGHTS ARE EXPRESSED IN POUNDS. WHEN NECESSARY, THE METRIC EQUIVALENT MAY BE COMPUTED ON THE BASIS OF ONE INCH EQUALS 25.4 MM, AND ONE POUND EQUALS 0.454 KG.

MATERIAL SPECIFICATIONS

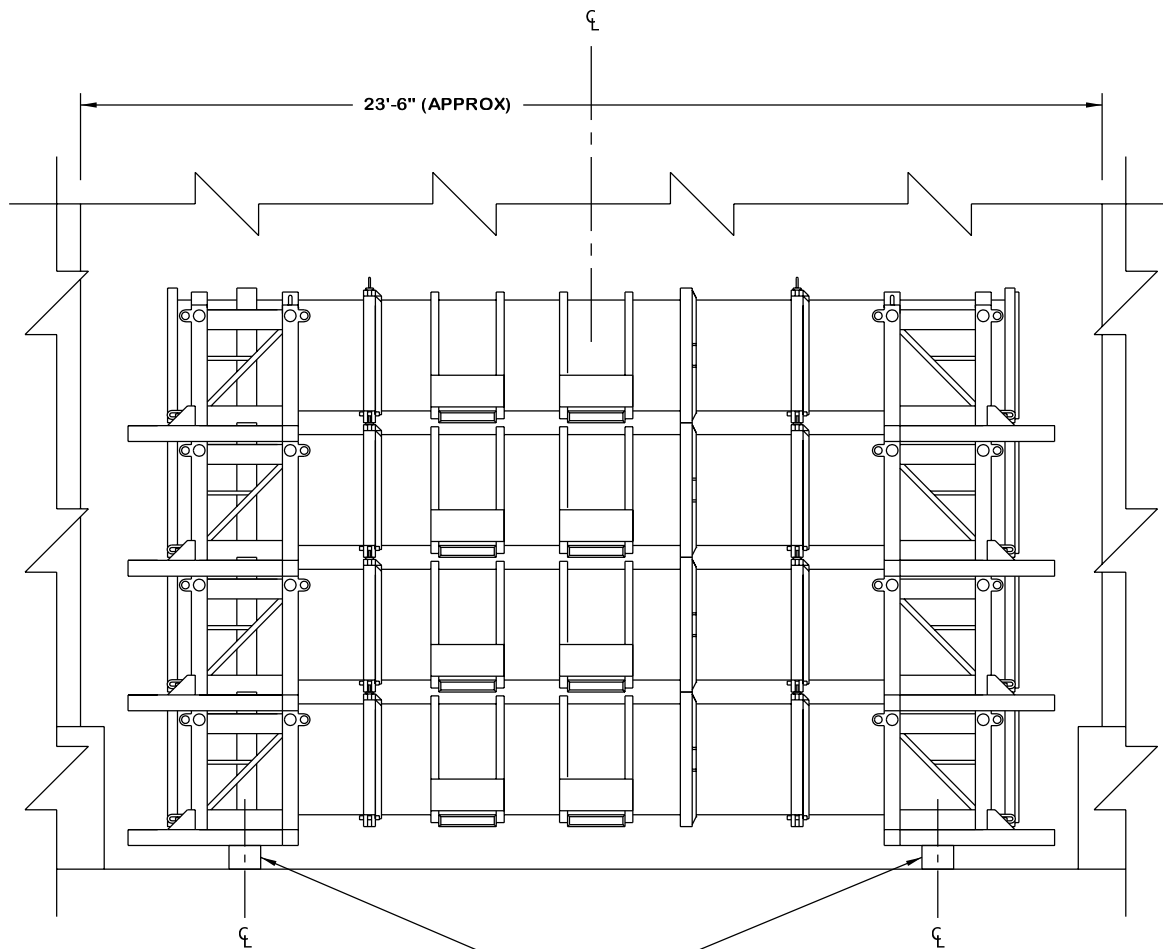
RAILROAD TIMBER - - - - -: COMMERCIAL GRADE, 6" X 8" X 8'-0" (MINIMUM SIZE).

PAINT - - - - -: COMMERCIAL GRADE, BRIGHT COLOR, WATERPROOF.



CANISTER DETAIL

GROSS WEIGHT - - - - - 3,750 LBS (APPROX)
 CONTAINER CUBE - - - - - 222.4 CU FT
 CONTAINER LENGTH
 WITH SKIDS REVERSED - - 219"
 CONTAINER CUBE
 WITH SKIDS REVERSED - - 208.1 CU FT



INDICATES RAILROAD TIMBERS, 6" X 8" X 8'-0" (MINIMUM SIZE) (AS REQD). INSTALL TWO ROWS OF TIMBERS FOR EVERY ROW OF CANISTERS TO BE STORED. SEE THE SPECIAL NOTES ON PAGE 4 AND GENERAL NOTES "K" AND "L" ON PAGE 2.

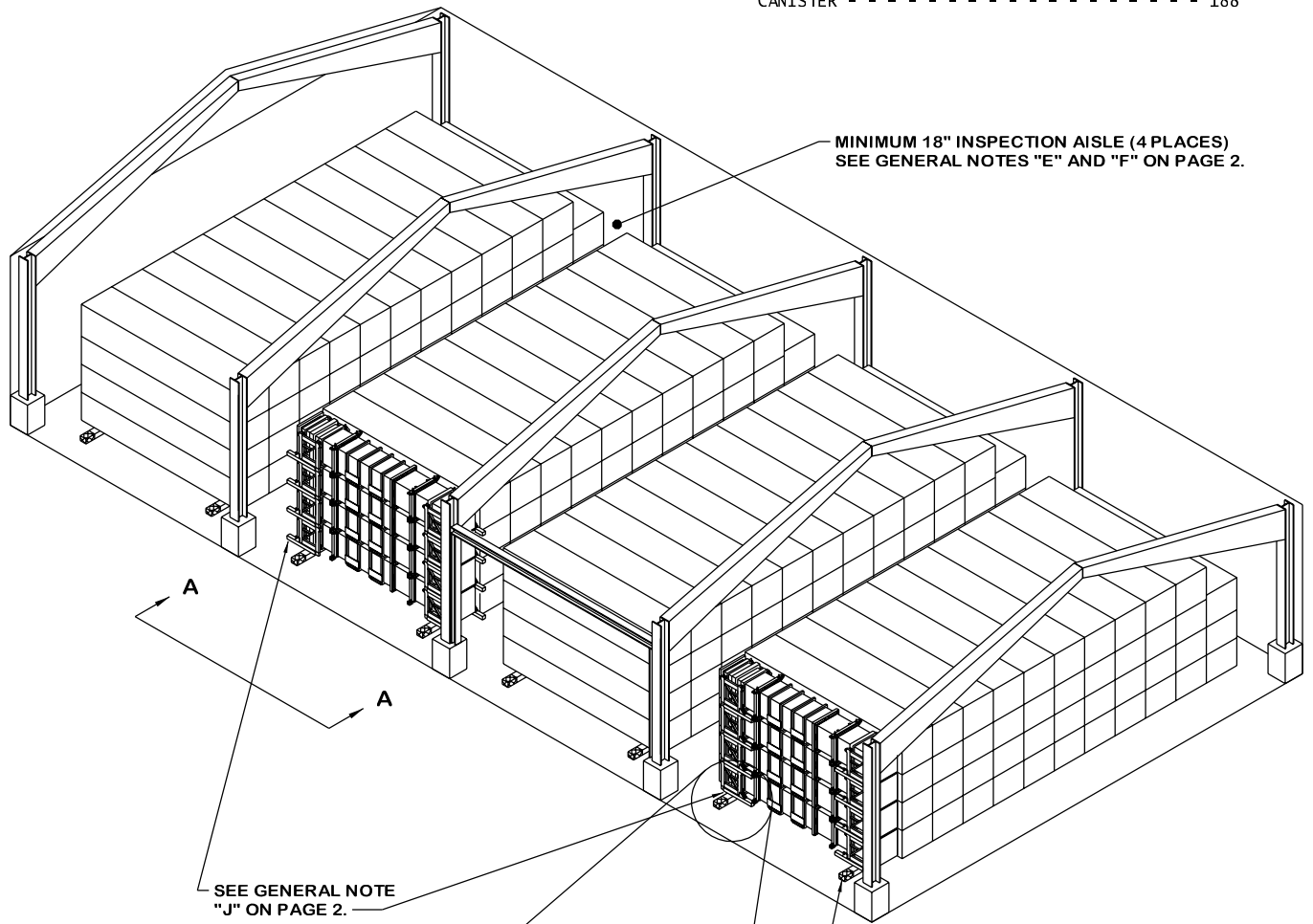
SECTION VIEW A-A

SPECIAL NOTES:

1. CENTER TIMBERS UNDER THE CANISTER SHOCK ISOLATOR FRAME. TIMBERS MUST BE CENTERED PLUS OR MINUS 2" FROM THE CENTER OF THE SQUARE THAT COMPRISES THE SHOCK ISOLATOR FRAME.
2. DO NOT USE PARTIAL LENGTH TIMBERS. EXCESS TIMBER LENGTH MAY EXTEND INTO THE EMPTY SPACE IN FRONT OF A CANISTER STACK IF NECESSARY.
3. DO NOT LOAD CANISTERS WITHIN 12" OF ANY END OF A TIMBER, INCLUDING ENDS WITHIN A STACK (I.E., JOINTS BETWEEN TIMBERS).
4. CENTER THE CANISTER STACKS BETWEEN THE MISSILE STORAGE SHED COLUMNS.

STORAGE IN MISSILE STORAGE SHED

ITEM	QUANTITY
CANISTER	----- 188

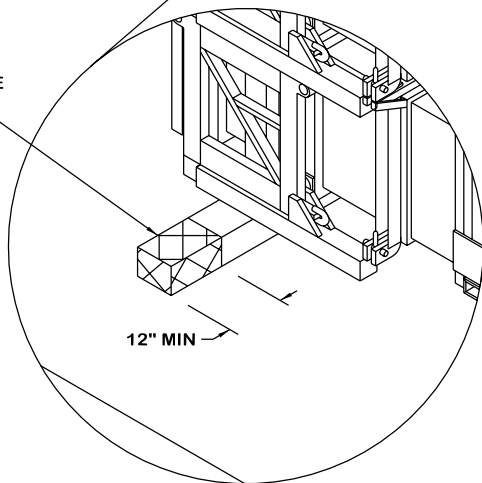


ISOMETRIC VIEW

INDICATES RAILROAD TIMBERS, 6" X 8" X 8'-0" (MINIMUM SIZE) (AS REQD). INSTALL TWO ROWS OF TIMBERS FOR EVERY ROW OF CANISTERS TO BE STORED. SEE THE SPECIAL NOTES ON PAGE 4 AND GENERAL NOTES "K" AND "L" ON PAGE 2.

SEE GENERAL NOTE "J" ON PAGE 2.

SEE GENERAL NOTE "L" ON PAGE 2.



12" MIN

EXPLODED VIEW

