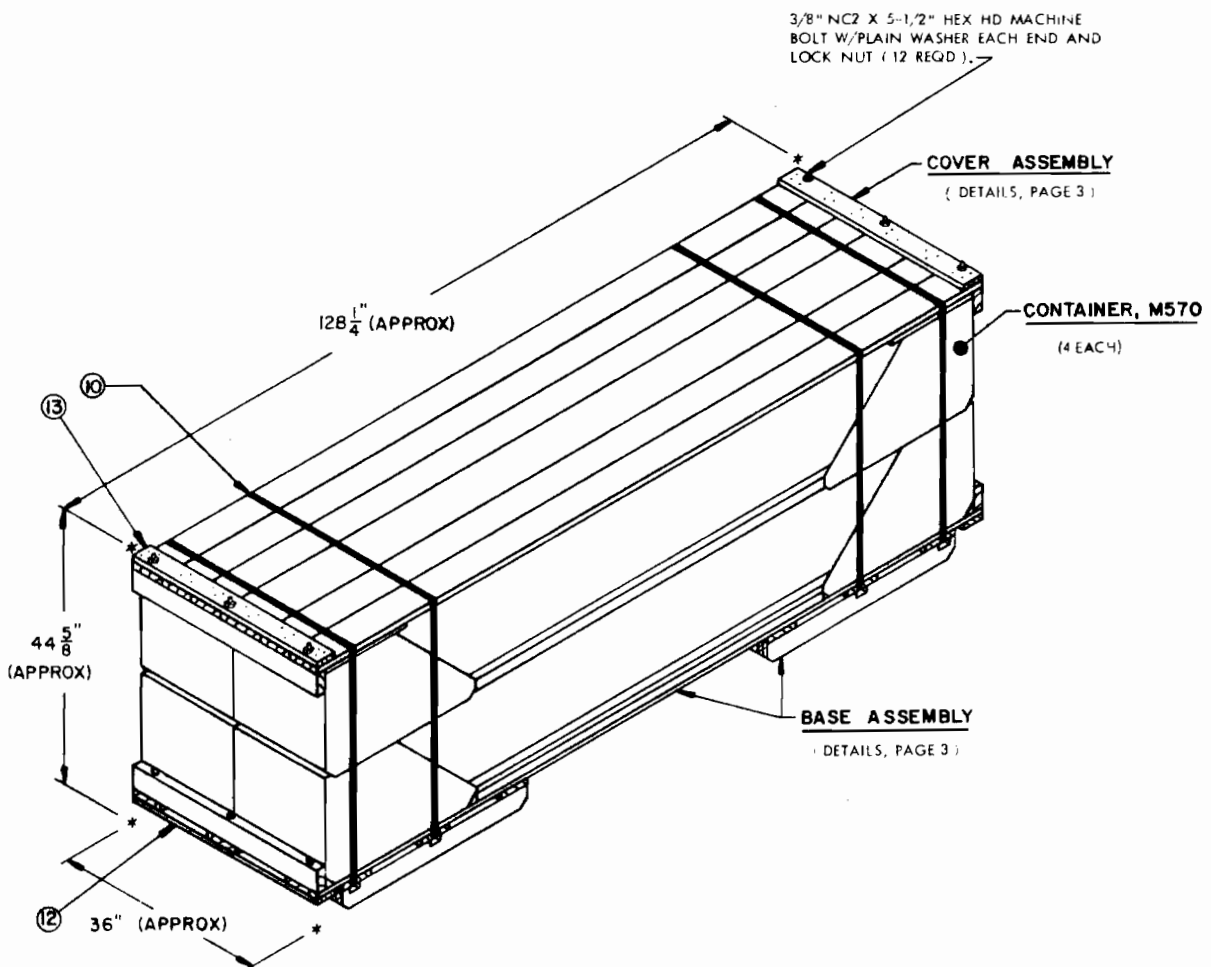


GENERAL NOTES

REVISIONS

1. FOR DETAILS OF CONTAINER, M570, SEE DRAWING NO. 11074804.
 CONTAINER DIMENSIONS----- 125" LONG X 18" WIDE X 19" HIGH
 GROSS WEIGHT----- 280 LBS (APPROX).
 TARE WEIGHT----- 95 LBS (APPROX).
 CUBE----- 24.74 CUBIC FEET
2. PALLETIZATION OF THE M570 CONTAINER DEPICTED IN THIS DRAWING IS INTENDED FOR OVERSEAS SHIPMENTS BUT MAY BE STORED IN THIS MANNER IF DESIRED. PALLETIZATION MAY BE ACCOMPLISHED AT TIME OF OUTSHIPMENT.
3. CLINCH ALL EXPOSED NAILS.

- REVISION NO. 2, DATED DECEMBER 1973, CONSISTS OF:
1. REMOVING NAILING FROM 2" X 4" END PIECES AND SUBSTITUTING BOLTS TO FACILITATE OPENING OF CONTAINER FOR INSPECTION.
 2. ADDING 1" X 6" LUMBER TO BASE ASSEMBLY FOR PROTECTION OF CONTAINER FROM MHE.
 3. CHANGING DRAWING FILE NO. FROM GM20P7 TO GM20CH1.

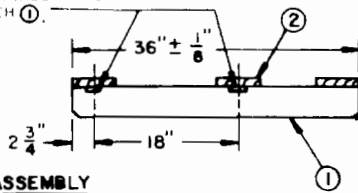
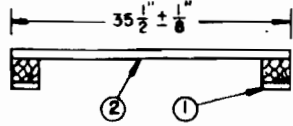


LOAD AS SHOWN

ITEM	QTY	WEIGHT (APPROX)
M 570 CNTR	4	1,120 LBS
PALLET	1	274 LBS
STRAPPING	52 FT	8 LBS
TOTAL WEIGHT		1,402 LBS (APPROX)
CUBE		119.2 CUBIC FEET

ASSEMBLED PALLET LOAD

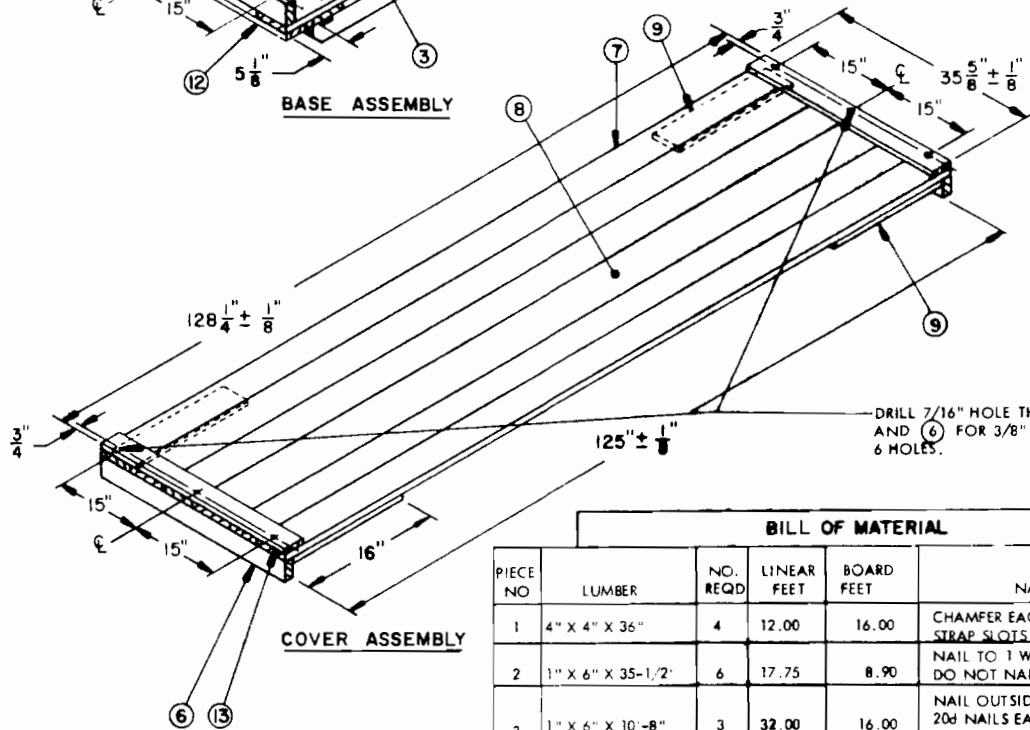
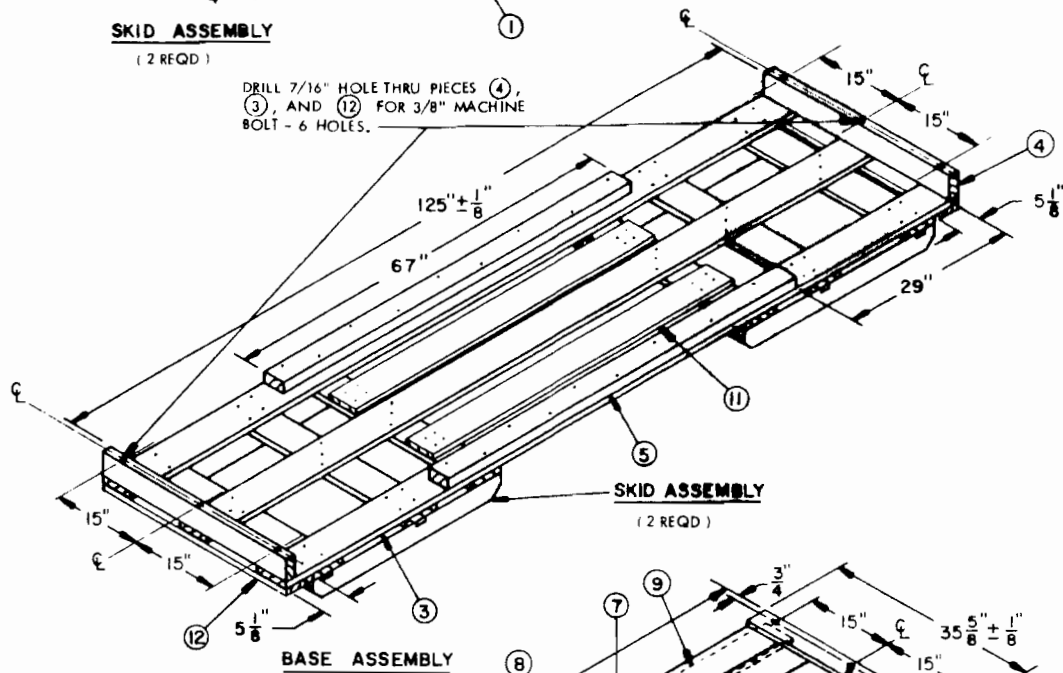
STRAP SLOTS, 1-3/8" (PLUS 1/8", MINUS 0) WIDE X 3 1/16" (PLUS 1/16", MINUS 0) DEEP, 2 REQD EACH (1)



CHAMFER 3/4" X 45 EACH END OF EACH PIECE

SKID ASSEMBLY
(2 REQD)

DRILL 7/16" HOLE THRU PIECES (4), (3), AND (12) FOR 3/8" MACHINE BOLT - 6 HOLES.



DRILL 7/16" HOLE THRU PCS (13), (7) AND (6) FOR 3/8" MACHINE BOLT - 6 HOLES.

MATERIAL SPECIFICATIONS

LUMBER: --- SEE TM 743-200-1, DUNNAGE LUMBER, FED SPEC MM-L-751.

PLYWOOD: --- 1/2", FED SPEC NN-P-530

NAILS: --- COMMON, CEMENT COATED OR CHEMICALLY ETCHED, FF-N-105. ALT: ANNULAR RING TYPE NAIL OF SAME SIZE

STRAPPING STEEL: --- TYPE I OR IV, CLASS B, FED SPEC QQ-S-781

STRAP SEALS: --- COMMERCIAL GRADE.

BOLTS/NUTS: --- FED SPEC FF-B-575.

BILL OF MATERIAL

PIECE NO	LUMBER	NO. REQD	LINEAR FEET	BOARD FEET	NAILING SCHEDULE
1	4" X 4" X 36"	4	12.00	16.00	CHAMFER EACH END AND PROVIDE STRAP SLOTS.
2	1" X 6" X 35-1/2"	6	17.75	8.90	NAIL TO 1 W/4-10d NAILS EACH END DO NOT NAIL THRU STRAP SLOTS.
3	1" X 6" X 10'-8"	3	32.00	16.00	NAIL OUTSIDE PIECES TO SKIDS W/4-20d NAILS EACH JOINT, AND CENTER PIECE TO 2 W/3-6d NAILS EACH JOINT.
4	2" X 4" X 35-1/2"	2	6.00	4.00	
5	2" X 4" X 67"	2	11.16	7.44	NAIL THRU 3 INTO 5 W/9-8d NAILS EACH PIECE.
6	2" X 4" X 35-1/2"	2	6.00	4.00	
7	1" X 6" X 10'-8"	5	53.34	26.67	
8	1" X 8" X 10'-8"	1	10.67	7.12	
9	1/2" PLYWOOD 3-1/2" X 16"	4			NAIL TO 7 WITH 6 - 2d NAILS EACH PIECE.
10	STEEL STRAP, 1-1/4" X .035" X 13'-0"	4		52 FEET - 8 LBS (4 SEALS)	
NAILS 4d - 72 EA; 8d - 18 EA; 10d - 40 EA; 12d - 75 EA.					
11	1" X 6" X 60"	2	10.00	5.00	NAIL TO 2 W/4-6d NAILS AT EACH END.
12	1" X 4" X 35-1/2"	2	6.00	2.00	NAIL TO 3 W/3-4d NAILS AT EACH JOINT.
13	1" X 4" X 35-1/2"	2	6.00	2.00	NAIL TO 7 AND 8 W/3-4d NAILS AT EACH JOINT.
BOLT 3/8" NC2-5-1/2" HEX HD W/PLAIN WASHER EACH END AND LOCK NUT - 12 EA.					

PALLET DETAILS

