



LANCE

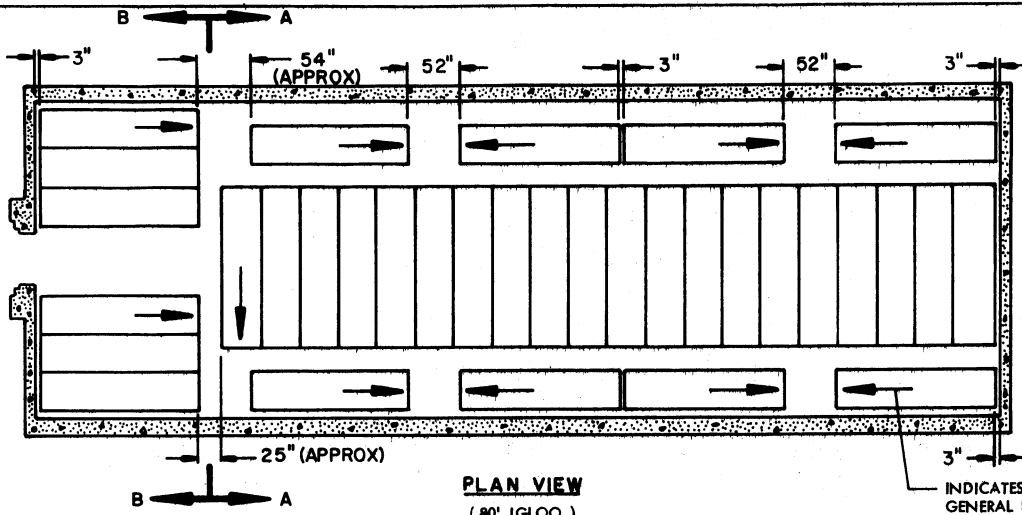
STORAGE IN 60' AND 80' IGLOO
MAGAZINE, 80' STRADLEY
MAGAZINE, AND STANDARD
MAGAZINE OF THE MAIN
ASSEMBLAGE, XM5, WITHOUT
LIQUID PROPELLANT, PACKED
IN THE XM599 CONTAINER

INDEX

<u>ITEM</u>	<u>PAGE(S)</u>
GENERAL NOTES -----	3
STORAGE IN IGLOO MAGAZINE -----	2,3
STORAGE IN STRADLEY MAGAZINE -----	4,5
STORAGE IN STANDARD MAGAZINE -----	6,7

REVISIONS			DRAFTSMAN JAM / CKW	PROJ ENG MWD / LEW	AMCPM-LCM [Signature]	
			CHECKER [Signature] / JDS	LOR ENGRS OFFICE [Signature]	AMSHI [Signature]	
			APPROVED <div style="text-align: right;">  MAJOR E. J. [Name] APPROVED BY ORDER OF COMMANDING GENERAL U. S. ARMY MATERIEL COMMAND  JOHN Z. [Name] USAMC AMMO CENTER U. S. ARMY MATERIEL COMMAND </div>			
			APRIL 1972			
			CLASS	DIVISION	DRAWING	FILE
			19	48	5217	GM 1-2-14J2

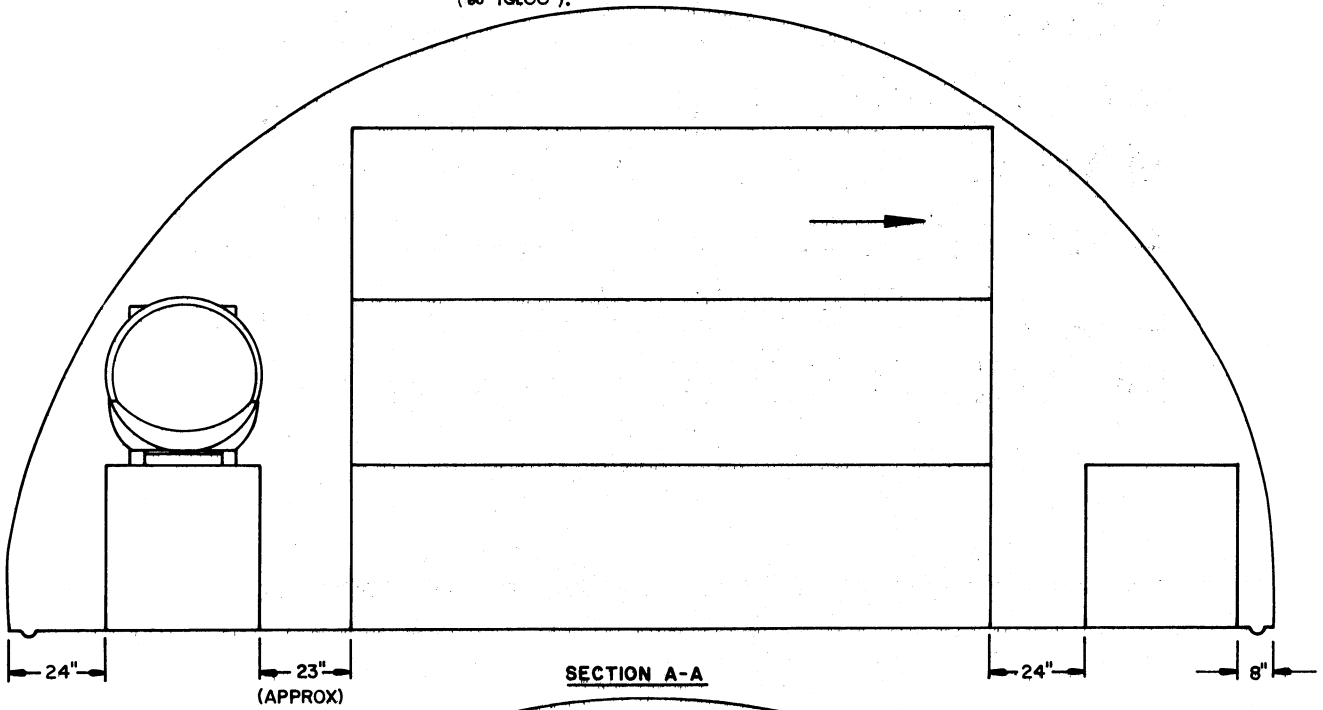
DO NOT SCALE



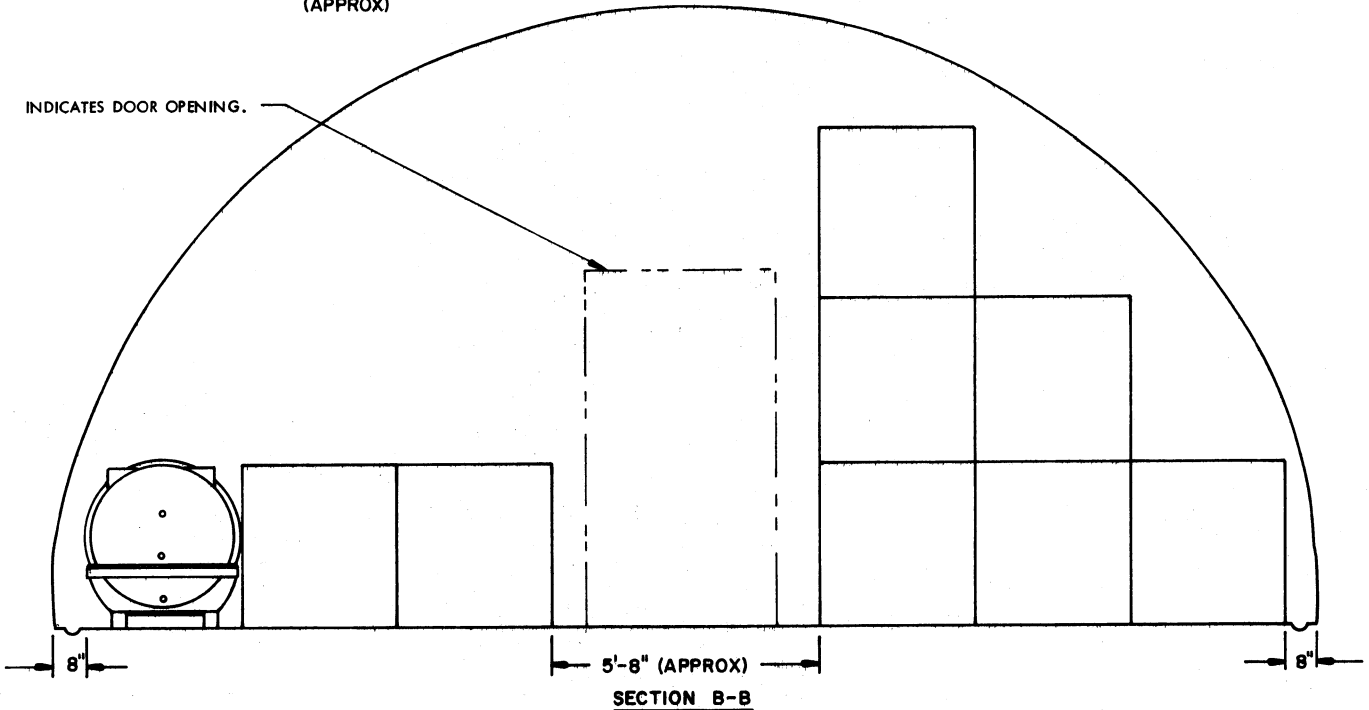
STORAGE AS SHOWN
80' IGLOO

ITEM	QUANTITY
XM599 CONTAINER	81

INDICATES AFT END OF THE CONTAINER. SEE GENERAL NOTE "D" ON PAGE 3.



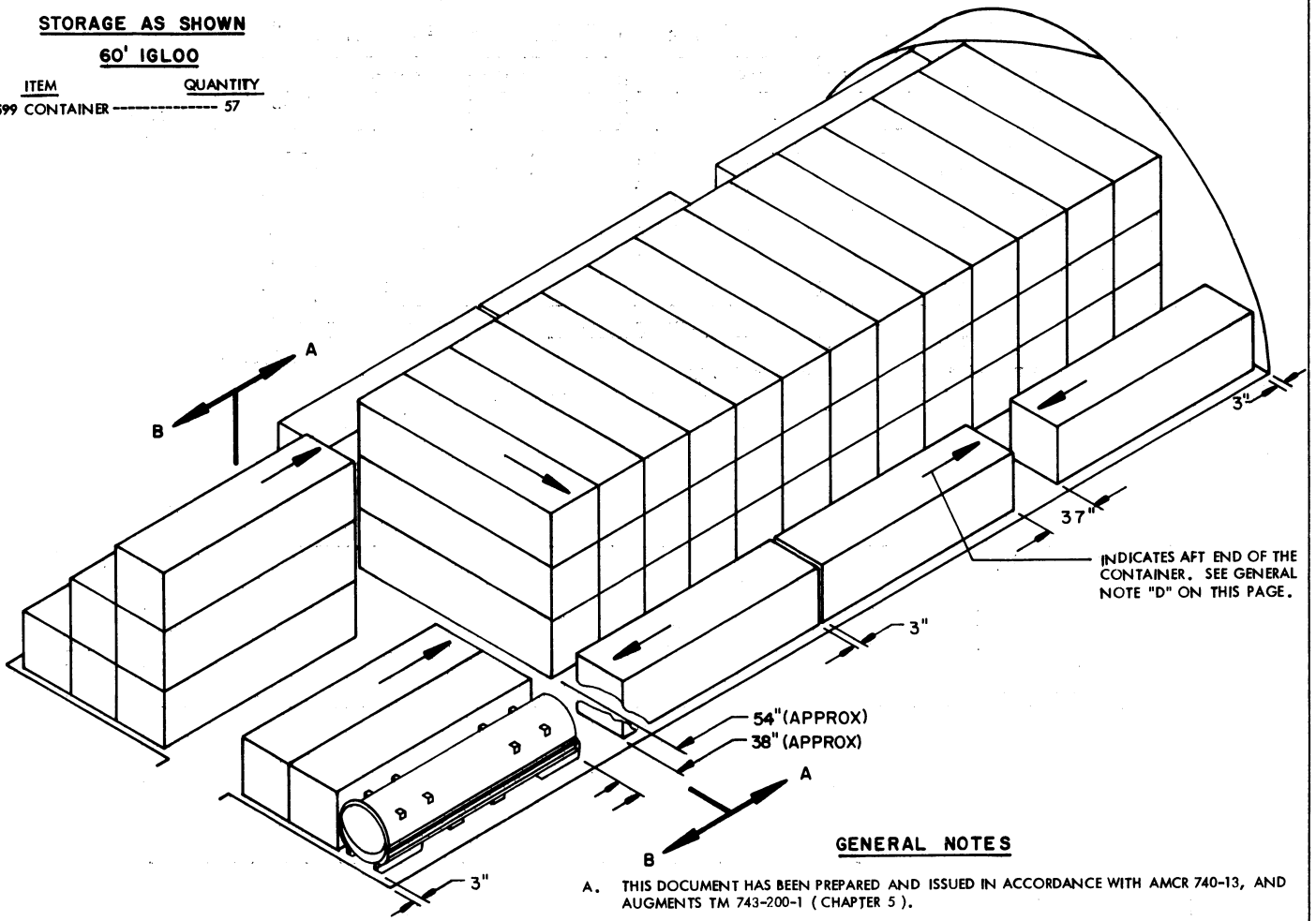
INDICATES DOOR OPENING.



STORAGE AS SHOWN

60' IGLOO

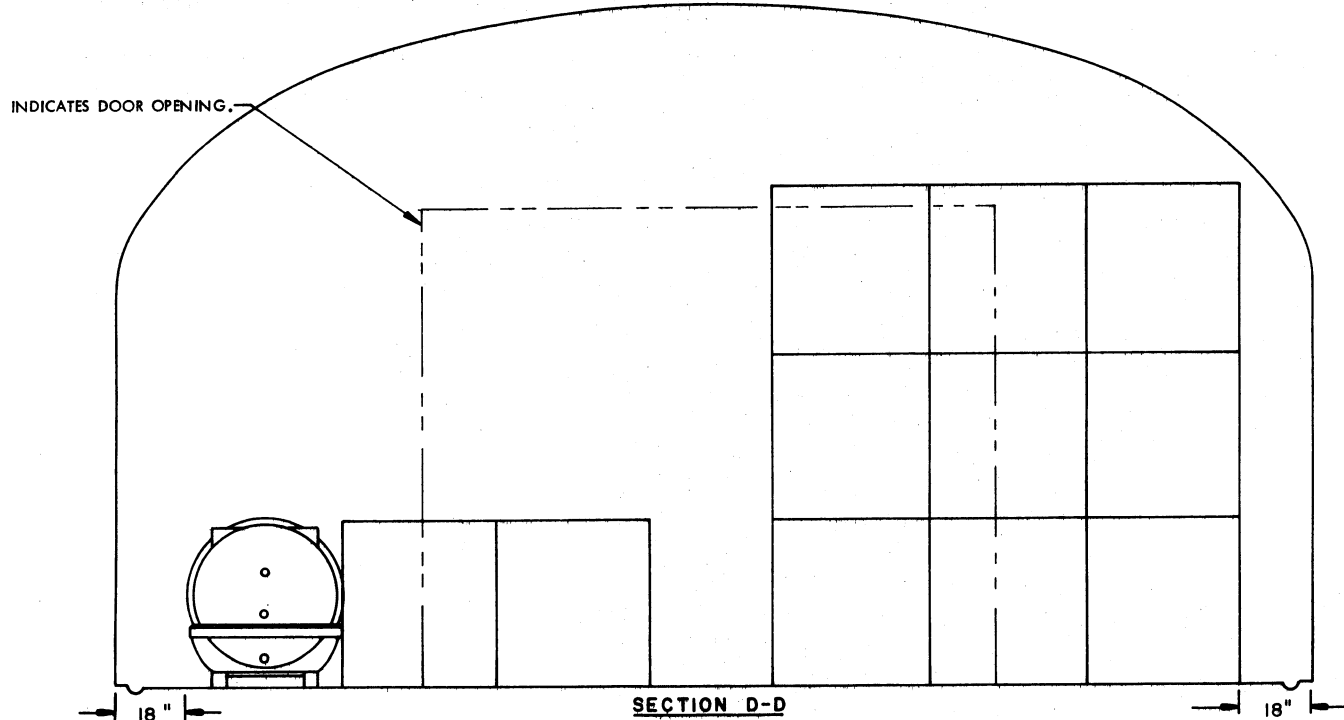
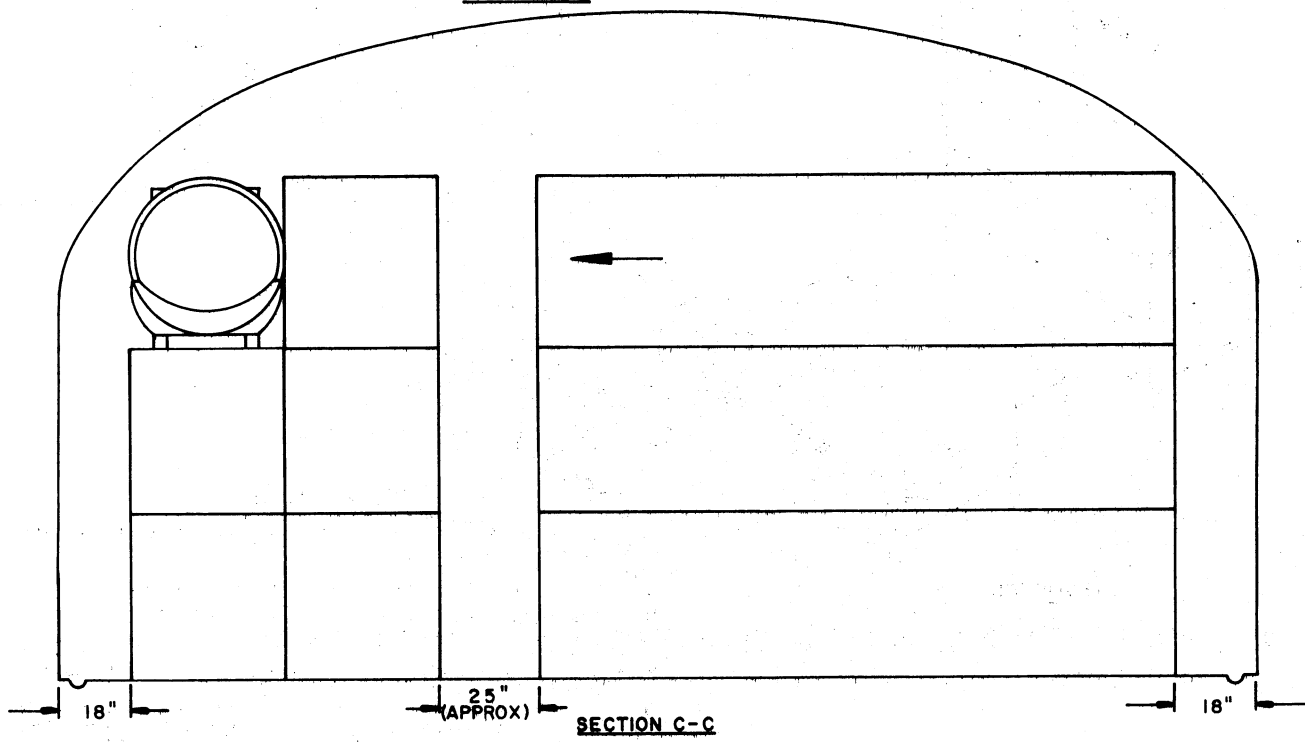
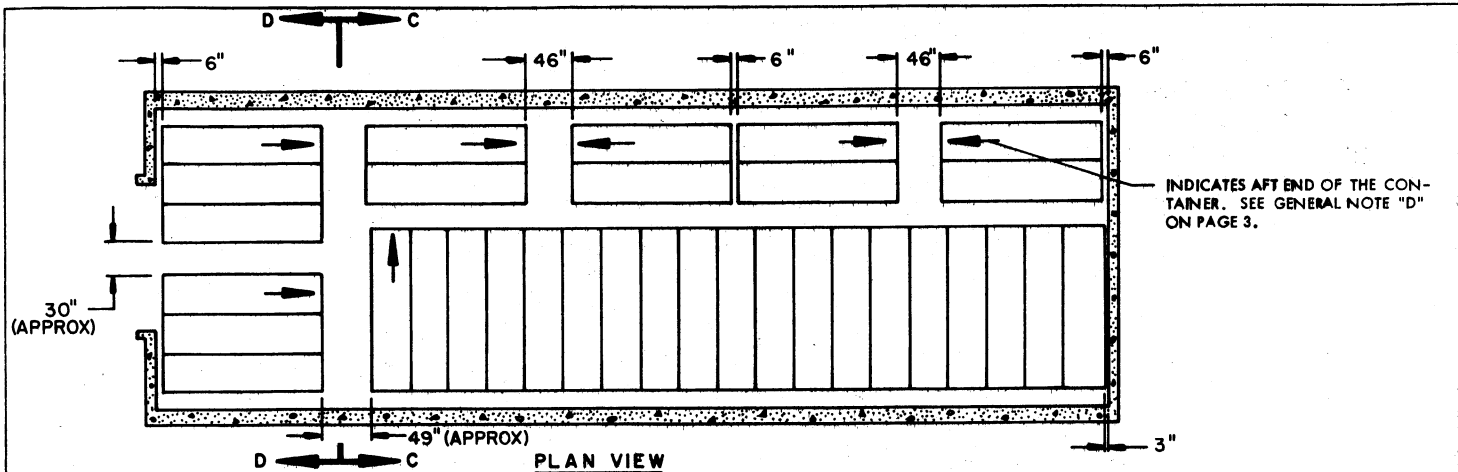
ITEM	QUANTITY
XM599 CONTAINER	57



ISOMETRIC VIEW
(60' IGLOO).

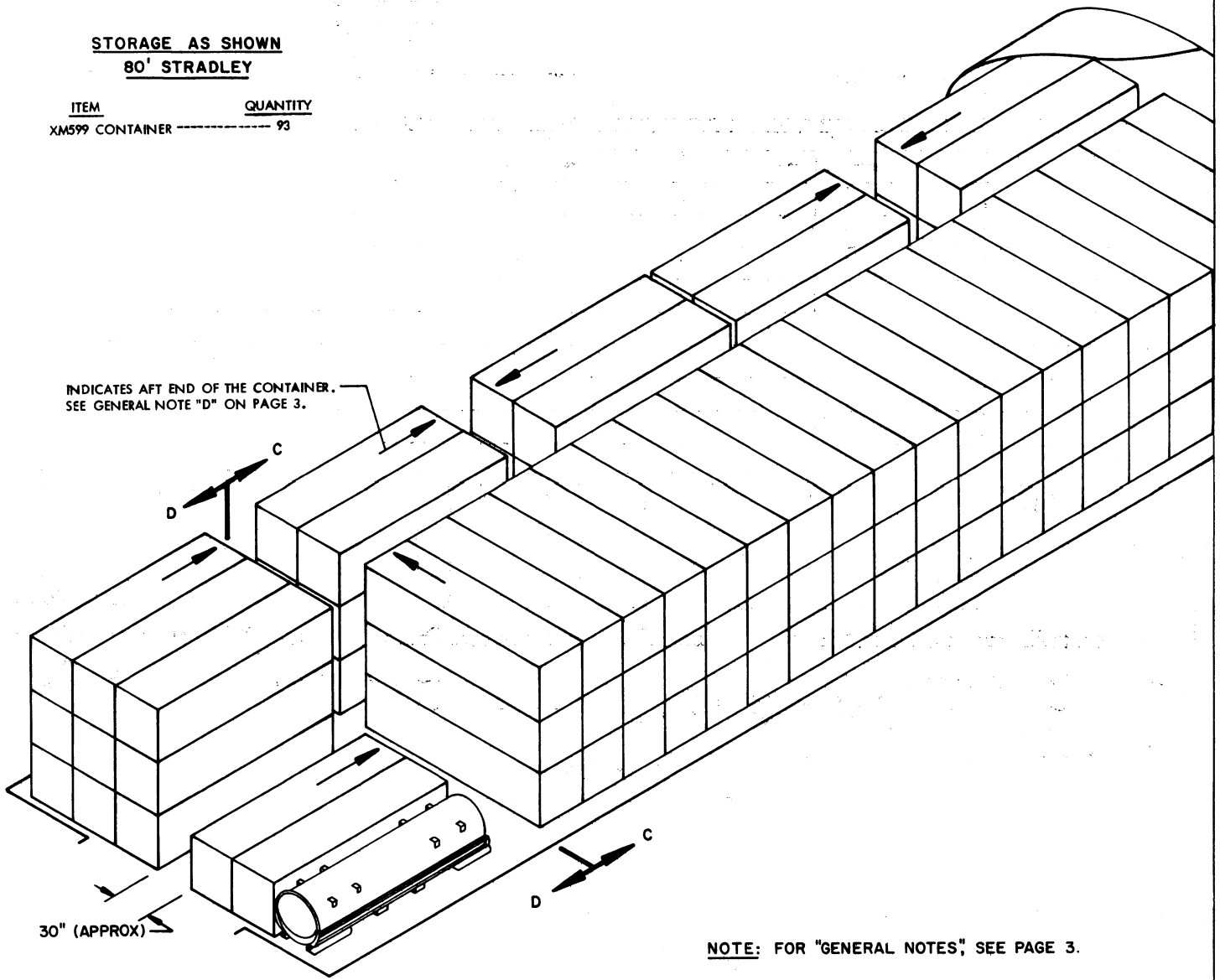
GENERAL NOTES

- A. THIS DOCUMENT HAS BEEN PREPARED AND ISSUED IN ACCORDANCE WITH AMCR 740-13, AND AUGMENTS TM 743-200-1 (CHAPTER 5).
- B. FOR DETAIL OF THE XM599 CONTAINER SEE DRAWING NO. E-10161905.
CONTAINER DIMENSIONS ---161" LONG BY 39" WIDE BY 43" HIGH.
GROSS WEIGHT -----2,500 POUNDS (APPROX).
- C. THIS ITEM IS A QD CLASS 2 ITEM AND IS IN COMPATIBILITY GROUPS B, E AND N.
- D. AISLE DIMENSIONS AS SHOWN MAY BE ADJUSTED TO SUIT LOCAL CONDITIONS AND/OR AVAILABLE MATERIALS HANDLING EQUIPMENT. HOWEVER, A 24" MINIMUM INSPECTION AISLE MUST BE MAINTAINED AT THE AFT END OF THE CONTAINER WHERE THE HUMIDITY INDICATOR IS LOCATED.
- E. CAUTION: CONTAINERS MUST NOT BE STACKED MORE THAN THREE (3) CONTAINERS HIGH.
- F. THE MAXIMUM FLOOR LOAD FOR A MAGAZINE AS PRESCRIBED BY LOCAL STANDARDS WILL NOT BE EXCEEDED.

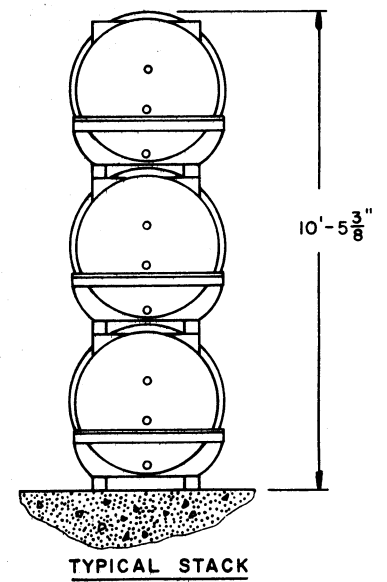
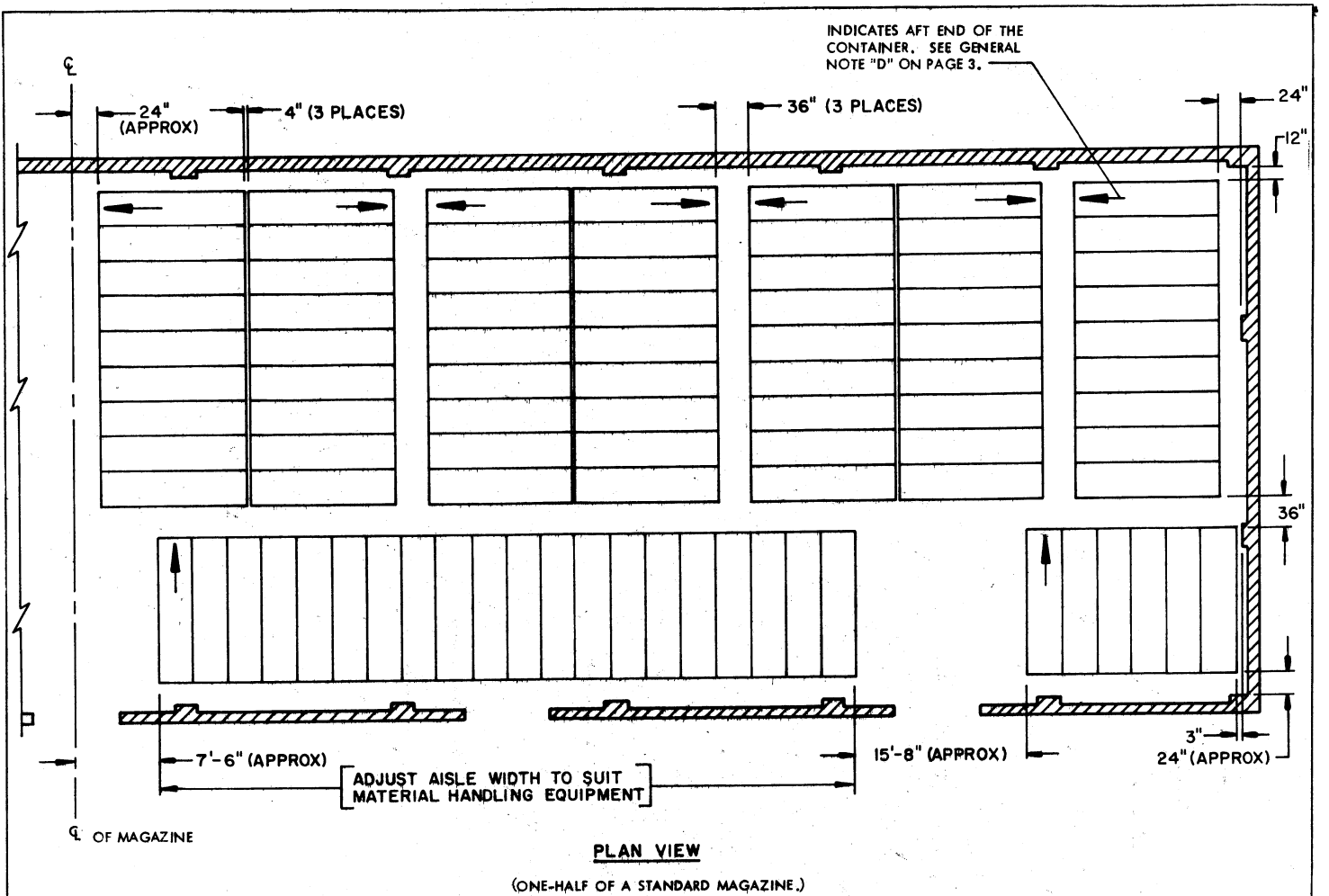


STORAGE AS SHOWN
80' STRADLEY

ITEM	QUANTITY
XM599 CONTAINER	93



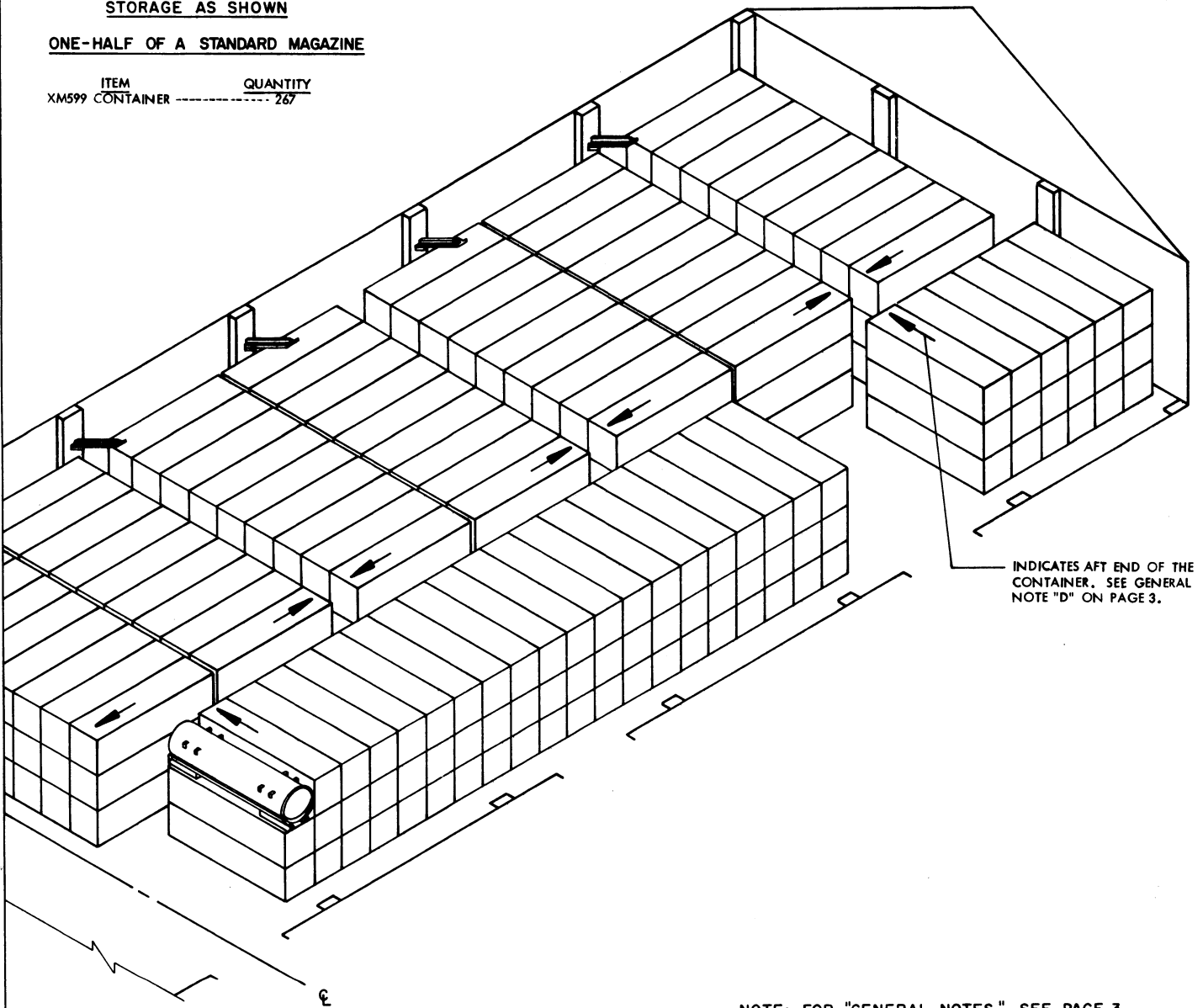
ISOMETRIC VIEW
(80' STRADLEY).



STORAGE AS SHOWN

ONE-HALF OF A STANDARD MAGAZINE

<u>ITEM</u>	<u>QUANTITY</u>
XM599 CONTAINER	267



ISOMETRIC VIEW

NOTE: FOR "GENERAL NOTES," SEE PAGE 3.

