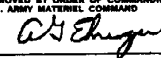


HAWK

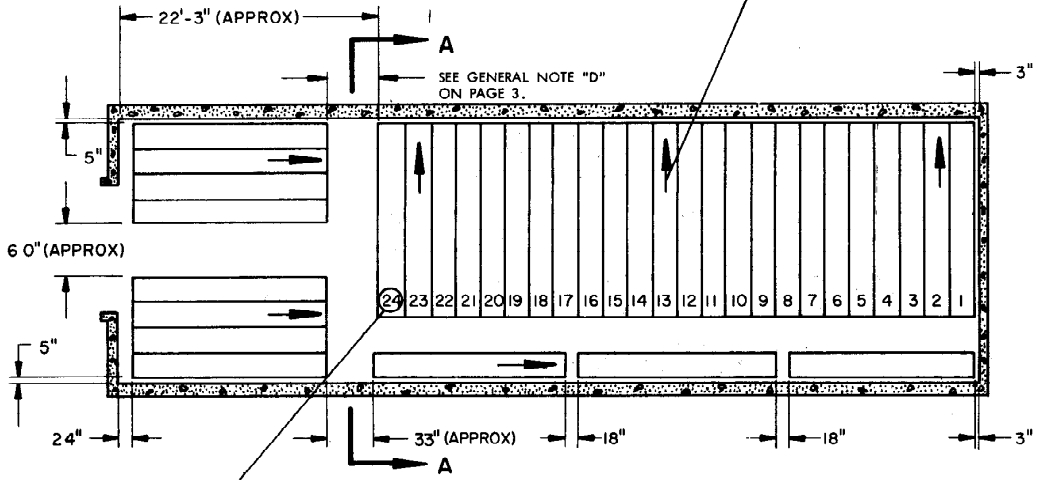
STORAGE IN 80' STRADLEY MAGAZINES
OF COMPLETE ROUND IN THE M430
OR M611 CONTAINER

THIS DRAWING, INCLUDING REVISION 2, SUPERSEDES
DRAWING 19-48-5189-GM14A2, DATED 22 MARCH 1961,
AND REVISION 1 THERETO, DATED 7 APRIL 1967.

DO NOT SCALE

REVISIONS				DRAFTSMAN GAG / NLH	PROJ ENG MMW / ASWS	ANSI-SP
NO.	DATE	BY	APPROVED	CHECKER ABC/BOZ	LOG ENGRG OFFICE John Boyd	JOB #
2	AUG 75	Wesley E. Gilliland AS Ethingen	Wesley E. Gilliland AS Ethingen			87
				<small>APPROVED BY ORDER OF COMMANDING GENERAL U. S. ARMY MATERIEL COMMAND</small> 		
				<small>USABC ARMO CENTER</small> U. S. ARMY MATERIEL COMMAND AUGUST 1975		
				CLASS	DIVISION	DRAWING
				19	48	5189
						FILE
						GM 14HA1

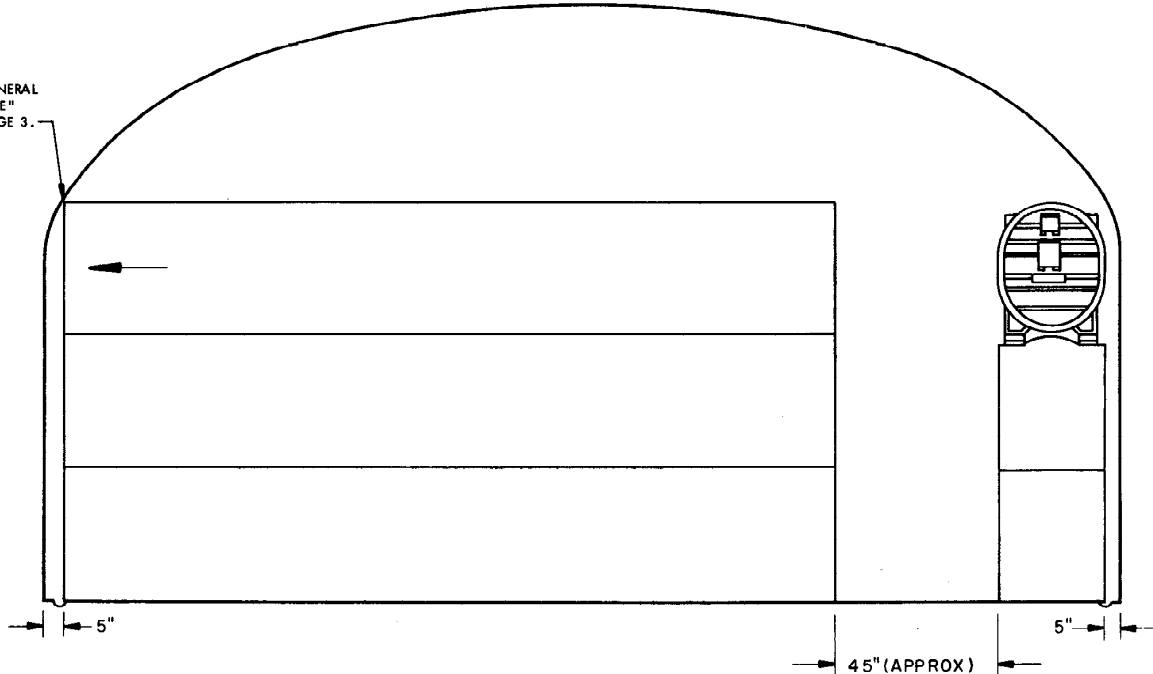
INDICATES NOSE (CLOSED)
END OF CONTAINER. SEE
GENERAL NOTE "C" ON
PAGE 3.



IF DETERMINED NECESSARY,
OMIT THIS STACK WHEN
STORING M611 CONTAINERS
TO PROVIDE ADEQUATE
ACCESS TO INSPECTION AISLES.

PLAN VIEW

SEE GENERAL
NOTE "E"
ON PAGE 3.



SECTION A-A

SEE GENERAL NOTE
"D" ON PAGE 3.

STORAGE AS SHOWN

80' STRADLEY

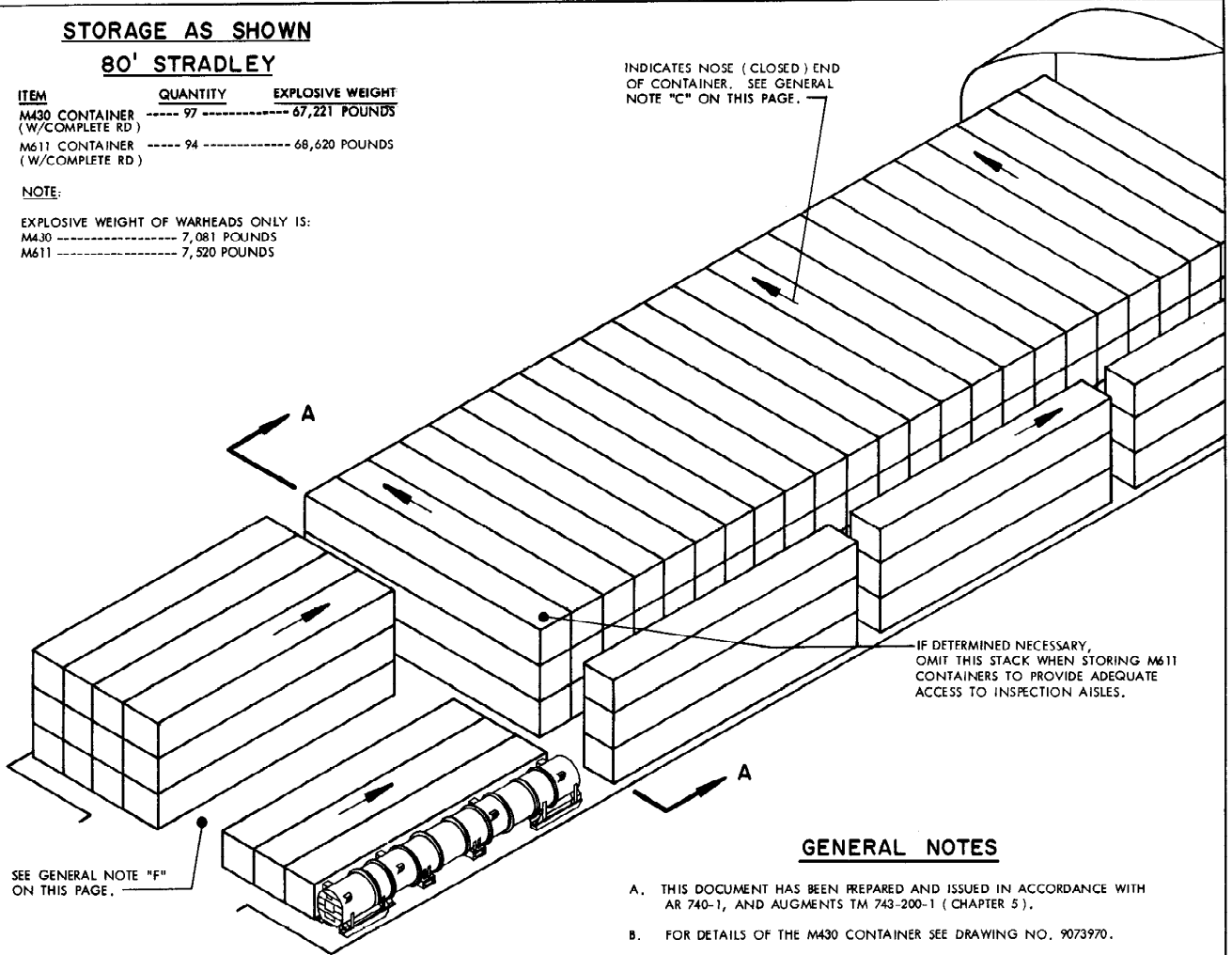
ITEM	QUANTITY	EXPLOSIVE WEIGHT
M430 CONTAINER (W/COMPLETE RD)	97	67,221 POUNDS
M611 CONTAINER (W/COMPLETE RD)	94	68,620 POUNDS

NOTE:

EXPLOSIVE WEIGHT OF WARHEADS ONLY IS:

M430	7,081 POUNDS
M611	7,520 POUNDS

INDICATES NOSE (CLOSED) END OF CONTAINER. SEE GENERAL NOTE "C" ON THIS PAGE.



ISOMETRIC VIEW

GENERAL NOTES

- A. THIS DOCUMENT HAS BEEN PREPARED AND ISSUED IN ACCORDANCE WITH AR 740-1, AND AUGMENTS TM 743-200-1 (CHAPTER 5).
- B. FOR DETAILS OF THE M430 CONTAINER SEE DRAWING NO. 9073970.
- CONTAINER DIMENSIONS ----- 216" LONG X 28-3/4" WIDE X 41-1/2" HIGH.
- GROSS WEIGHT ----- 3,225 POUNDS (APPROX).
- EXPLOSIVE WEIGHT ----- WARHEAD, 73 POUNDS, MOTOR, 620 POUNDS.
- FOR DETAILS OF THE M611 CONTAINER SEE DRAWING NO. 8035841.
- CONTAINER DIMENSIONS ----- 216" LONG X 30" WIDE X 41-1/2" HIGH.
- GROSS WEIGHT ----- 3,351 POUNDS (APPROX).
- EXPLOSIVE WEIGHT ----- WARHEAD, 80 POUNDS, MOTOR, 650 POUNDS.
- C. THESE ITEMS ARE QD CLASS 7 ITEMS AND ARE IN COMPATIBILITY GROUP F. **CAUTION:** THESE ITEMS ARE IN A "PROPULSIVE STATE" AND CONTAINERS MUST BE STORED WITH THE NOSE (CLOSED) END FACING TOWARD THE REAR WALL OR A SIDE WALL OF THE MAGAZINE, NOT TOWARD THE DOOR OR FRONT WALL.
- D. AISLE DIMENSIONS SHOWN IN THIS DRAWING MAY BE ADJUSTED TO SUIT LOCAL CONDITIONS AND/OR AVAILABLE MATERIALS HANDLING EQUIPMENT (MHE). THE DIMENSIONS SHOWN ARE BASED ON THE STORAGE OF M430 CONTAINERS. WHEN STORING M611 CONTAINERS, MINOR ADJUSTMENTS TO DIMENSIONS WILL BE REQUIRED TO COMPENSATE FOR THE SLIGHTLY INCREASED WIDTH OF THE CONTAINERS.
- E. STORED CONTAINERS MUST NOT CONTACT THE WALL OF A MAGAZINE. TO PROVIDE FOR THIS MANDATORY CLEARANCE REQUIREMENT, THE SPACE AT THE SIDEWALLS OF THE MAGAZINE MAY BE ADJUSTED ACCORDINGLY, OR A CONTAINER MAY BE OMITTED FROM A DEPICTED STACKING PATTERN AS NECESSARY.
- F. ADDITIONAL M430 OR M611 CONTAINERS MAY BE STORED IN THE FRONTAL AREA OF THE MAGAZINE IF AVAILABLE MATERIALS HANDLING EQUIPMENT PERMITS.
- G. THE STORAGE PROCEDURES DEPICTED HEREIN FOR SPECIFIC TYPES OF MAGAZINES MAY ALSO BE UTILIZED TO STORE THE M430 OR M611 CONTAINER IN OTHER TYPES OF APPROVED MAGAZINES. MINOR ADJUSTMENTS MAY BE MADE TO FACILITATE STORAGE IN OTHER TYPES OF MAGAZINES, HOWEVER, THE BASIC PRINCIPLES AS DEPICTED HEREIN WILL BE COMPLIED WITH.

REVISIONS

REVISION NO. 2, DATED AUGUST 1975, CONSISTS OF:

1. CHANGING COMPATIBILITY GROUP.
2. CHANGES NECESSARY TO UPDATE DRAWING FORMAT.
3. UPDATING GENERAL NOTES.
4. ADDING M611 CONTAINER.
5. CHANGING PROCEDURES TO PROVIDE FOR ITEMS BEING IN A "PROPULSIVE STATE".
6. CHANGING DRAWING FILE NO. FROM GM14A2 TO GM14HA1.

(14)

(

(