

REV NO 3	APPROVED BY
	BUREAU OF EXPLOSIVES
	<i>R. T. Grossmuck</i>
	MILITARY ASSISTANT
DATE	<i>11/10/67</i>

HONEST JOHN

LOADING AND BRACING (TL & LTL) ON FLAT BED TRAILERS OF THE WARHEAD ASSEMBLIES PACKED ONE PER WOODEN CONTAINER

INDEX

<u>ITEM</u>	<u>PAGE(S)</u>
GENERAL NOTES, AND MATERIAL SPECIFICATIONS -----	2
UNITIZATION AND HANDLING PROCEDURES -----	3
12-UNIT LOAD ON A 40'-0" LONG TRAILER -----	4, 5
12-UNIT LOAD ON A 40'-0" LONG TRAILER -----	6, 7
8-UNIT LOAD ON A 30'-0" LONG TRAILER -----	8, 9
10-UNIT LOAD ON A 40'-0" LONG DROP FRAME TRAILER -----	10, 11
TYPICAL LTL (1-UNIT LOAD) -----	12
TYPICAL LTL (2-UNIT LOAD) -----	13
PROCEDURES FOR SHIPPING AN ODD NUMBER OF CONTAINERS -----	14, 15
DETAILS -----	16

NOTE: THIS DRAWING SUPERSEDES DRAWINGS 19-48-5131 GM IIA30, DATED 2 JANUARY 1957, AND THE TWO REVISIONS THERETO, DATED 2 APRIL 1959 AND 30 NOVEMBER 1960, AND 19-48-5567-GM IIA66, DATED 10 JANUARY 1959

DO NOT SCALE

DRAFTSMAN M.A.S.	TRACER	ENGINEER Diw / B&B	SUBMITTED
CHECKER RHA	CHECKER	ENGINEER <i>[Signature]</i>	Ralph T. Mackintosh COLONEL ORD. CORPS U.S.A.
REVISIONS			EXAMINED
2	11-30-60	<i>[Signature]</i>	Ch. Baker ORD. CORPS U.S.A.
3	25 AUG 69	<i>[Signature]</i>	Glenn J. Arney ORD. CORPS U.S.A.
			ORDNANCE CORPS U.S.A.
			2 JANUARY 1957
	CLASS	DIVISION	DRAWING
	19	48	5131
			FILE
			GM IIA30

GENERAL NOTES

(GENERAL NOTES CONTINUED)

- A. THIS DOCUMENT HAS BEEN PREPARED AND ISSUED IN ACCORDANCE WITH AMCR 740-13, AND AUGMENTS TM 743-200-1 (CHAPTER 5).
- B. THE LOADS AS SHOWN HEREIN ARE BASED ON FLAT BED AND DROP FRAME TRAILERS 8'-0" WIDE BY VARIOUS LENGTHS HAVING WOOD OR WOOD AND METAL FLOORS. TRAILERS HAVING ALL METAL FLOORS WILL NOT BE USED FOR SHIPPING THESE ITEMS.
- C. THE OUTLOADING PROCEDURES SPECIFIED HEREIN ARE APPLICABLE TO THE HONEST JOHN WARHEAD ASSEMBLIES WHEN THEY ARE PACKAGED IN A PLYWOOD SHEATHED CONTAINER, LUMBER SHEATHED CONTAINER, AND THE XM473 CONTAINER. SUBSEQUENT REFERENCE TO CONTAINER HEREIN MEANS THE CONTAINER WITH WARHEAD ASSEMBLY.
- D. FOR DETAIL OF THE LUMBER SHEATHED CONTAINER SEE DRAWING NO. 8026346.
CONTAINER DIMENSIONS ----- 146" LONG X 49-5/8" WIDE X 56-1/2" HIGH.
GROSS WEIGHT W/WARHEAD ----- 3,410 LBS (APPROX).
W/O WARHEAD ----- 1,922 LBS (APPROX).
- E. FOR DETAIL OF THE PLYWOOD SHEATHED CONTAINER SEE DRAWING NO. 8100000.
CONTAINER DIMENSIONS ----- 144" LONG X 49-5/8" WIDE X 56-1/2" HIGH.
GROSS WEIGHT W/WARHEAD ----- 3,102 LBS (APPROX).
W/O WARHEAD ----- 1,602 LBS (APPROX).
- F. FOR DETAIL OF THE XM473 CONTAINER SEE DRAWING NO. 8824908 AND 8881082.
CONTAINER DIMENSIONS ----- 140-1/4" LONG X 44-1/4" WIDE X 50-3/8" HIGH.
GROSS WEIGHT W/WARHEAD ----- 2,898 LBS (APPROX).
- G. THESE ITEMS ARE CLASSIFIED AS EXPLOSIVES. THESE PROCEDURES CAN ALSO BE UTILIZED FOR THE SHIPMENT OF THE CONTAINERS WHEN THEY ARE LOADED WITH PRACTICE OR EMPTY WARHEAD ASSEMBLIES, EMPTY CONTAINERS, OR WHEN THEY ARE LOADED WITH AN ITEM OTHER THAN AS IDENTIFIED WITHIN THE DRAWING TITLE.
NOTE: 18" X 32" PLACARD BOARDS MUST BE PROVIDED AS REQUIRED BY LAW AND/OR REGULATION. CAUTION: PLACARD BOARDS AND BOARD MOUNTING BRACKETS MUST NOT BE NAILED TO THE LADING; THEY WILL BE NAILED TO THE CARRYING VEHICLE.
- H. THE APPROVED BLOCKING, BRACING, AND STAYING METHODS FOR THE LOADS SPECIFIED HEREIN MUST BE FOLLOWED. THE NUMBER OF UNITS MAY BE ADJUSTED TO FIT THE SIZE OF THE VEHICLE TO BE LOADED OR THE QUANTITY TO BE SHIPPED. FOR A LOAD QUANTITY OTHER THAN SPECIFIED, THE APPROVED METHODS MUST BE FOLLOWED AS CLOSELY AS POSSIBLE.
- J. GROSS WEIGHT AND AXLE DISTRIBUTION OF WEIGHT FOR A LOAD WILL BE THE RESPONSIBILITY OF THE CARRIER. THE CARRIER WILL ADVISE THE SHIPPER OF THE APPLICABLE LOADING REQUIREMENTS, AND THE SHIPPER WILL LOAD ACCORDINGLY.
- K. OTHER TYPES OF LADING ITEMS MAY BE LOADED ON THE TRAILERS WHICH ARE PARTIALLY LOADED WITH THE DESIGNATED ITEMS, PROVIDING THE TOTAL LOAD IS COMPATIBLE, EXISTING DIRECTIVES ARE NOT VIOLATED, AND THE OTHER LADING ITEMS ARE BLOCKED AND BRACED TO EQUAL THE BLOCKING AND BRACING CRITERIA SPECIFIED HEREIN.
- L. SELECTION OF A VEHICLE TO BE USED TO TRANSPORT THE DESIGNATED ITEMS MUST COMPLY WITH AR 55-355, CHAPTER 213, FOR EXPLOSIVES OR OTHER DANGEROUS ARTICLES, IN FULL.
- M. LADING WILL NOT BE SECURED BY CHAINS AND/OR LOAD BINDERS IN LIEU OF SPECIFIED DUNNAGE.
- N. CAUTION: REGARDLESS OF THE TYPE OF TRAILER INVOLVED, ONLY THOSE TRAILERS HAVING TIE-DOWN STRAP ANCHORING FACILITIES WHICH PROVIDE HOLDING STRENGTH EQUAL TO OR GREATER THAN THE STRENGTH OF THE HOLD-DOWN STRAPS, AND WHICH ALIGN NEAR THE INDICATED LOCATIONS FOR THE SPECIFIED HOLD-DOWN STRAPS SHOULD BE USED. IF TRAILER STRAP ANCHOR DEVICES ARE NOT PROPERLY POSITIONED TO RECEIVE TWO INCH (2") STRAPPING AS SHOWN, OR IF THE STRAP ANCHOR DEVICES ARE NOT EQUAL TO OR GREATER THAN THE STRENGTH OF THE TIE-DOWN STRAPS, THE STRAPS MAY BE APPLIED TO FORM A COMPLETE LOOP WHICH ENCOMPASSES BOTH THE LADING AND THE TRAILER FRAME AND/OR BED. CAUTION: AVOID TRAILER WHEELS, FIFTH WHEEL PLATE, CONTROLS AND OTHER APPURTENANCES. USE EDGE PROTECTORS ON ALL SHARP EDGES.
- O. WHEN ANY STRAP IS SEALED AT AN END-OVER-END LAP JOINT, A MINIMUM OF TWO (2) SEALS, BUTTED TOGETHER, WITH TWO (2) PAIR OF CRIMPS PER SEAL MUST BE USED. CAUTION: EXERCISE CARE DURING TENSIONING TO PREVENT DAMAGE TO THE CONTAINERS.
- P. IF THE CAPACITY OF THE AVAILABLE MATERIALS HANDLING EQUIPMENT (MHE) PERMITS, IT IS RECOMMENDED THAT CONTAINERS BE UNITIZED PRIOR TO PLACEMENT ABOARD THE TRAILER. IN SOME INSTANCES, CONTAINERS WILL ALREADY BE UNITIZED INTO STACKS WHEN OFFERED FOR LOADING. THESE UNITIZED STACKS SHOULD BE INSPECTED, AND AS REQUIRED, LOOSE UNITIZING STEEL STRAPPING MUST BE REPLACED.
- Q. THE WORDS "ANTI-SKID PLATE" WILL BE STENCILED IN ONE INCH (1") HIGH LETTERS ON BOTH SIDES OF A CONTAINER JUST ABOVE THE LOCATIONS OF THESE PLATES.
- R. IF EDGE PROTECTORS FOR 2" STEEL STRAPPING ARE NOT COMMERCIALY AVAILABLE, THEY MAY BE FORMED FROM 18 (MINIMUM) GAGE SHEET STEEL PIECES WHICH ARE 9" LONG BY 6" WIDE.
- S. NOTICE: A STAGGERED NAILING PATTERN WILL BE USED WHEN DUNNAGE IS NAILED TO THE FLOOR OF THE TRANSPORTING VEHICLE, OR WHEN LAMINATING DUNNAGE. ADDITIONALLY, THE NAILING PATTERN FOR AN UPPER PIECE OF LAMINATED DUNNAGE WILL BE ADJUSTED AS REQUIRED SO THAT A NAIL FOR THAT PIECE WILL NOT BE DRIVEN THROUGH ONTO OR RIGHT BE-SIDE A NAIL IN A LOWER PIECE.
- T. THE DUNNAGE LUMBER SPECIFIED THROUGHOUT THIS PROCEDURAL DRAWING IS OF A NOMINAL SIZE. FOR EXAMPLE, 2" X 4" MATERIAL IS ACTUALLY 1-5/8" THICK BY 3-5/8" WIDE AND 2" X 6" MATERIAL IS ACTUALLY 1-5/8" THICK BY 5-5/8" WIDE.
- U. FOR ADDITIONAL GUIDANCE, ATTENTION IS DIRECTED TO THE "UNITIZATION AND HANDLING PROCEDURES" ON PAGE 3 AND TO THE "SPECIAL NOTES" SECTION WHICH IS IMMEDIATELY ADJACENT TO THE DEPICTED OUTLOADING METHODS.

REVISIONS

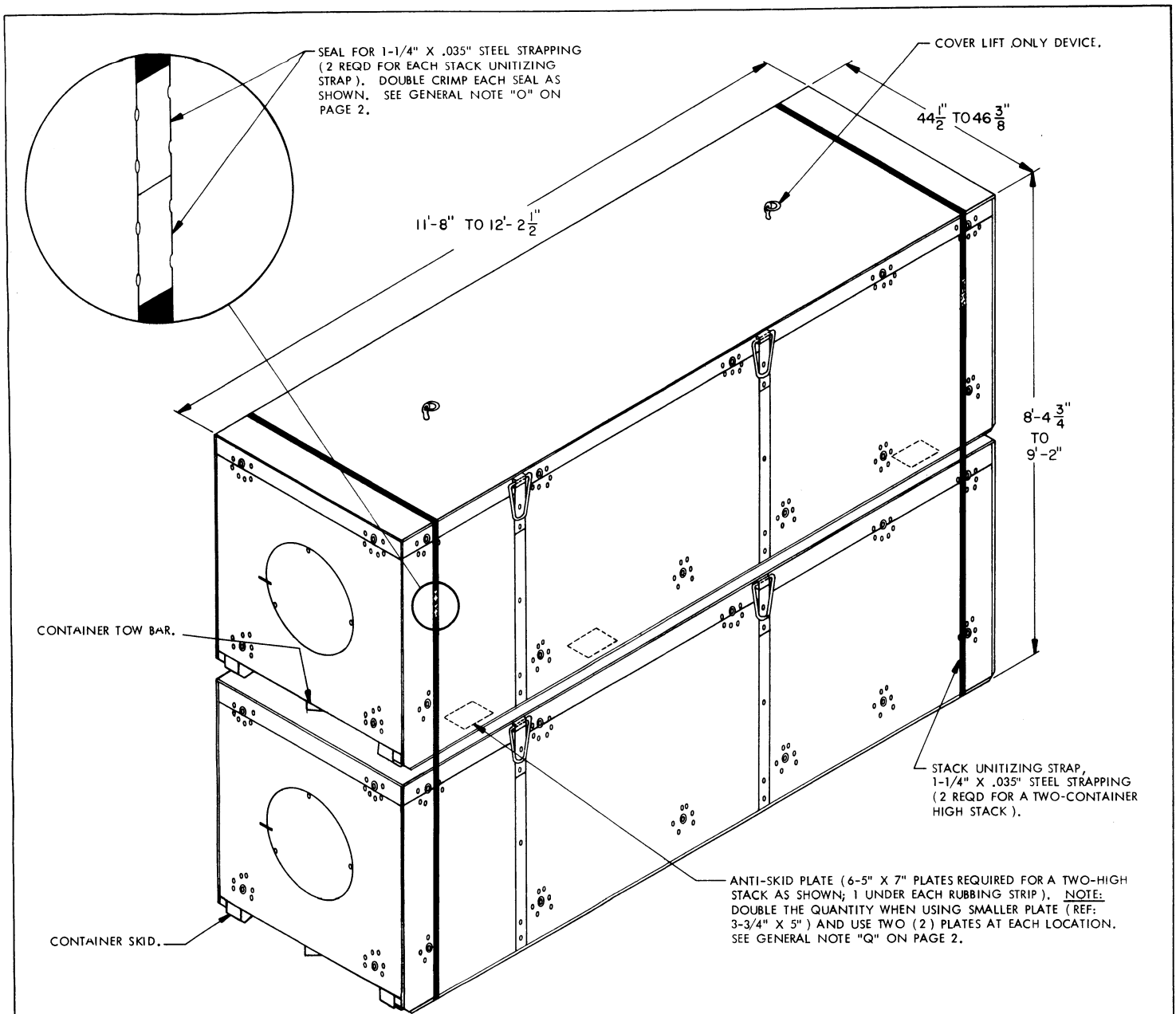
REVISION NO. 3, DATED 25 AUG 1969, CONSISTS OF:

1. ADDED: PROCEDURES FOR SHIPPING THE XM473 CONTAINER.
2. ADDED: PROCEDURES FOR DROP FRAME TRAILERS.
3. ADDED: UNITIZING AND HANDLING PROCEDURAL GUIDANCE.
4. DELETED: "CORPORAL GUIDED MISSILE" FROM THE DRAWING.
5. ADDED: PROCEDURES FOR SHIPPING A TWELVE-UNIT LOAD ON A 40'-0" LONG TRAILER.
6. CHANGES NECESSARY TO UPDATE DRAWING FORMAT.

(GENERAL NOTES CONTINUED AT RIGHT)

MATERIAL SPECIFICATIONS

- LUMBER -----: SEE TM 743-200-1, DUNNAGE LUMBER, FED SPEC MM-L-751.
- NAILS -----: COMMON, CEMENT COATED OR CHEMICALLY ETCHED,
FED SPEC FF-N-105.
ALT: ANNULAR-RING TYPE NAIL OF THE SAME SIZE.
- STRAPPING, STEEL -----: TYPE I OR IV, CLASS A OR B FOR 1-1/4" STRAPPING AND
CLASS A, B, OR C FOR 2" STRAPPING. FED SPEC QQ-5-781.
FOR FSN SEE SB 38-100.
- STRAP SEAL, ANTI-SKID
PLATE, EDGE PROTECTOR,
STAKE POCKET PROTECTOR,
STRAP STAPLE -----: COMMERCIAL GRADE.



TYPICAL STACK

THE PLYWOOD SHEATHED CONTAINER IS DEPICTED.

UNITIZING AND HANDLING PROCEDURAL GUIDANCE

1. STACKING CONTAINERS FOR UNITIZING.
 - A. PLACE AN UPPER CONTAINER AS CLOSELY AS POSSIBLE IN VERTICAL ALIGNMENT WITH THE LOWER CONTAINER.
 - B. INSTALL ANTI-SKID PLATES BETWEEN LAYERS AS SHOWN.
 - C. POSITION THE FORWARD END OF AN UPPER CONTAINER ABOVE THE FORWARD END OF THE LOWER CONTAINER.
2. INSTALLING 1-1/4" X .035" STACK UNITIZING STEEL STRAPPING.
 - A. POSITION EACH OF THE UNITIZING STRAPS AROUND THE CONTAINERS AS SHOWN. PLACE THE STRAPS NEAR THE EXTERIOR ENDS OF THE RUBBING STRIPS AND SO THAT THE STRAPPING LAYS FLAT AND STRAIGHT WITH THE BODY SURFACE OF THE CONTAINERS, I.E., VERTICAL ALONG SIDES AND STRAIGHT ACROSS THE TOP AND BOTTOM OF THE STACK.
 - B. THE STRAPPING WILL BE FIRMLY TENSIONED AND SO THAT EACH STRAP CRUSHES SLIGHTLY INTO THE UPPER AND LOWER EDGES OF THE STACK. EACH END-OVER-END LAP JOINT WILL BE SEALED WITH TWO BUTTED-TOGETHER SEALS WHICH WILL HAVE TWO PAIR OF CRIMPS EACH. EXCESS STRAPPING (STRAP ENDS) SHOULD BE CUT OFF OR BROKEN OFF NEAR THE JOINT SEALS.

(CONTINUED AT THE RIGHT)

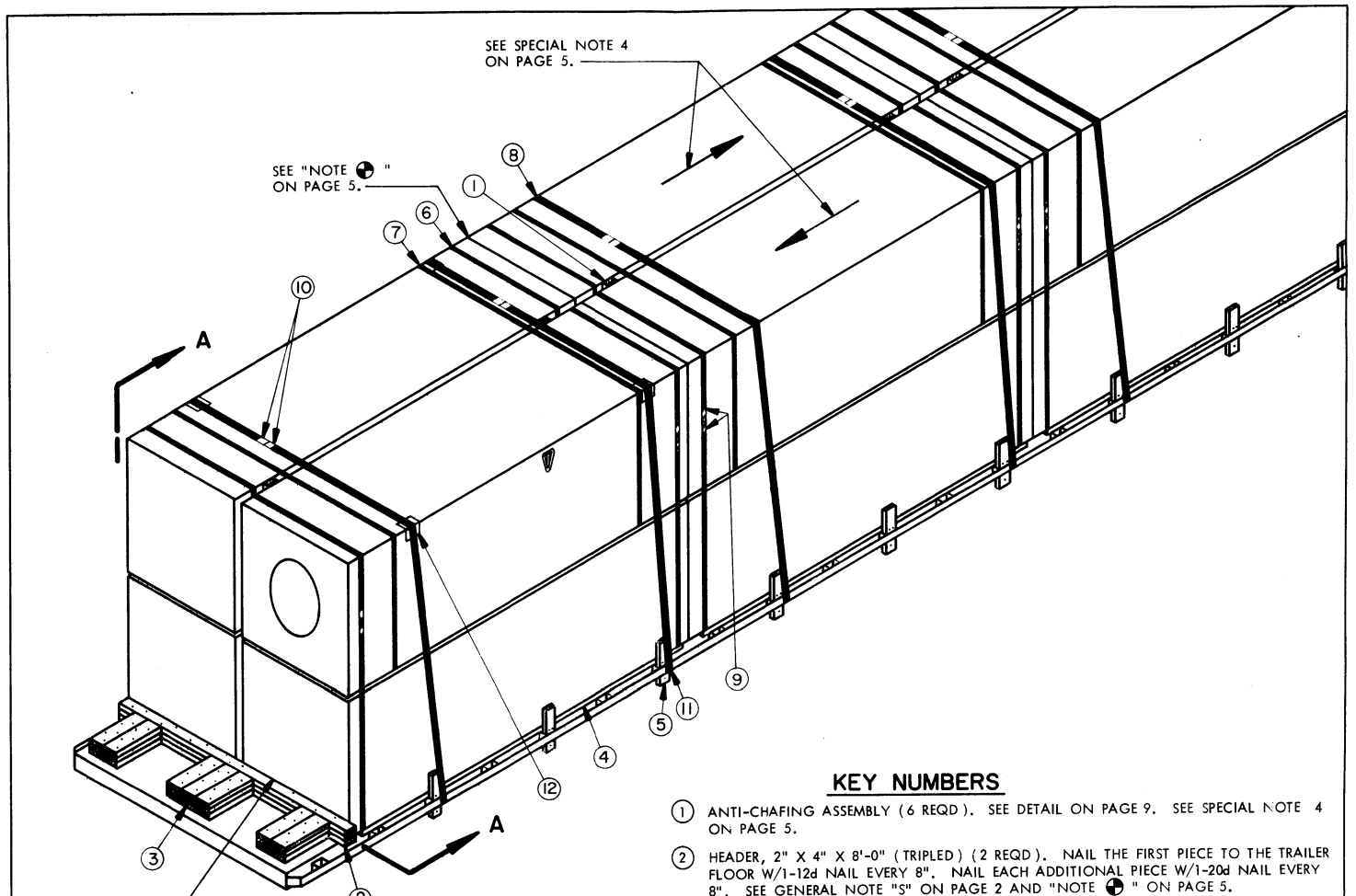
(UNITIZING AND HANDLING PROCEDURAL GUIDANCE CONTINUED)

3. CONTAINER OR CONTAINER STACK HANDLING.

NOTES: (1) APPROVED MATERIALS HANDLING EQUIPMENT (FORKLIFT TRUCKS, CRANES, SLINGS, SPREADER BARS, ETC.) IS SPECIFIED ELSEWHERE THAN HEREIN.

(2) PRECAUTIONARY HANDLING TECHNIQUES NORMALLY EMPLOYED OR AS SPECIFIED FOR THE TYPE OF COMMODITY INVOLVED WILL BE USED FOR HANDLING THE DEPICTED CONTAINERS.

 - A. ONLY APPROVED AND APPROPRIATELY SIZED MATERIALS HANDLING EQUIPMENT WILL BE USED FOR HANDLING THE DEPICTED CONTAINERS.
 - B. IF HANDLING IS ACCOMPLISHED WITH A FORKLIFT TRUCK THE CONTAINERS SHOULD ONLY BE HANDLED FROM A SIDE POSITION, AND WITH CARE BEING EXERCISED TO PREVENT DAMAGE TO THE CONTAINERS BY THE FORK TINES OR THE PACKAGE GUARD. FOR VERY SHORT "INCHING" SPEED MOVEMENTS, SUCH AS WILL BE EXPERIENCED DURING FLAT BED TRAILER LOADING, A TWO-HIGH CONTAINER STACK MAY BE HANDLED BY INSERTING THE FORKS OF A FORKLIFT TRUCK UNDER THE UPPER CONTAINER. IF ONE CONTAINER OR A STACK OF CONTAINERS IS HANDLED BY SLINGING, THE SLING MUST BE OF SUCH A DESIGN THAT LIFTING IS DONE ON THE BOTTOM OF THE BOTTOM CONTAINER. **CAUTION:** DO NOT ATTACH A SLING TO THE COVER LIFTING DEVICES TO LIFT A CONTAINER OR A CONTAINER STACK.

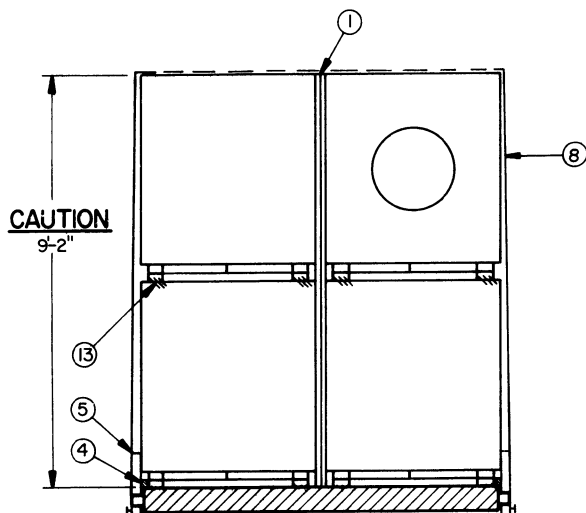


ISOMETRIC VIEW

DEPICTING THE PLYWOOD SHEATHED CONTAINER. SEE SPECIAL NOTE 1 ON PAGE 5.

KEY NUMBERS

- ① ANTI-CHAFING ASSEMBLY (6 REQD). SEE DETAIL ON PAGE 9. SEE SPECIAL NOTE 4 ON PAGE 5.
- ② HEADER, 2" X 4" X 8'-0" (TRIPLED) (2 REQD). NAIL THE FIRST PIECE TO THE TRAILER FLOOR W/1-12d NAIL EVERY 8". NAIL EACH ADDITIONAL PIECE W/1-20d NAIL EVERY 8". SEE GENERAL NOTE "5" ON PAGE 2 AND "NOTE 1" ON PAGE 5.
- ③ BACK-UP CLEAT, 2" X 6" X 18" (TRIPLED) (14 REQD). NAIL THE FIRST PIECE TO THE TRAILER FLOOR W/5-12d NAILS. NAIL EACH ADDITIONAL PIECE W/5-20d NAILS.
- ④ FILLER PIECE, 2" X 2" BY CONTAINER LENGTH (6 REQD). POSITION UNDER EDGE OF CONTAINER AGAINST THE RUBBING STRIP. SEE "ALTERNATIVE SIDE BLOCKING METHOD" DETAIL ON PAGE 16.
- ⑤ STUB STAKE (18 REQD). SIZE TO FIT STAKE POCKET. CUT TO EXTEND 9" ABOVE TRAILER FLOOR AND 3" BELOW STAKE POCKET. DRIVE ONE-12d NAIL INTO STAKE BELOW STAKE POCKET ALLOWING APPROXIMATE ONE INCH TO PROTRUDE. NAIL TO FILLER PIECE W/2-12d NAILS.
- ⑥ STACK UNITIZING STRAP, 1-1/4" X .035" X 27'-0" STEEL STRAPPING (12 REQD). SEE THE "UNITIZATION AND HANDLING PROCEDURES" ON PAGE 3.
- ⑦ LOAD BUNDLING STRAP, 1-1/4" X .035" X 28'-0" STEEL STRAPPING (6 REQD).
- ⑧ HOLD-DOWN STRAP, 2" X .050" X 30'-0" STEEL STRAPPING (6 REQD). INSTALL EACH STRAP FROM TWO (2) 15'-0" LONG PIECES. SEE GENERAL NOTE "N" ON PAGE 2.
- ⑨ SEAL FOR 1-1/4" STRAPPING (36 REQD, 2 PER STRAP). DOUBLE CRIMP EACH SEAL. SEE GENERAL NOTE "O" ON PAGE 2.
- ⑩ SEAL FOR 2" STRAPPING (36 REQD, 6 PER STRAP). EXCEPT FOR THE SEALS USED TO SECURE THE PADS, DOUBLE CRIMP EACH SEAL. SEE GENERAL NOTE "O" ON PAGE 2.
- ⑪ PAD, 2" X .050" STEEL STRAP 18" LONG (12 REQD). POSITION UNDER AND SEAL TO A HOLD-DOWN STRAP. SEE "DETAIL A" ON PAGE 9. ALTERNATIVE: STAKE POCKET PROTECTOR (24 REQD). USE TWO (2) UNDER EACH ANCHOR POINT WITH A HOLD-DOWN STRAP. SEE "DETAIL B" ON PAGE 9.
- ⑫ EDGE PROTECTOR FOR 2" STRAPPING (12 REQD). POSITION UNDER A "HOLD-DOWN STRAP" AT THE TOP EDGE OF THE LOAD. SEE GENERAL NOTE "R" ON PAGE 2.
- ⑬ ANTI-SKID PLATE (36-5" X 7" PLATES OR 72-3-3/4" X 5" PLATES REQD). POSITION ONE (1) 5" X 7" PLATE OR TWO (2) 3-3/4" X 5" PLATES UNDER EACH RUBBING STRIP OF ALL SECOND LAYER CONTAINERS. SEE "UNITIZATION AND HANDLING PROCEDURES" ON PAGE 3 AND GENERAL NOTE "Q" ON PAGE 2.



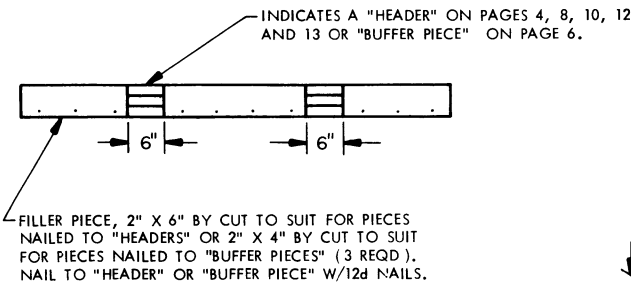
SECTION A-A

SPECIAL NOTES

1. A 12-UNIT LOAD OF THE PLYWOOD SHEATHED CONTAINER IS SHOWN ON A 40'-0" LONG BY 8'-0" WIDE FLAT BED TRAILER. IF A 12-UNIT LOAD OF 146" LONG CONTAINERS IS SHIPPED, SPECIAL REAR BLOCKING PROVISIONS AS SHOWN BELOW APPLY. **NOTE:** THE AVAILABLE LOADING SURFACE OF THE TRAILER BED MUST MEASURE AT LEAST 39'-7" FOR THE DEPICTED LOADING PROCEDURES TO BE APPLICABLE. A SHORTER TRAILER CANNOT BE USED FOR THE SHIPMENT OF A 12-UNIT LOAD.
2. A TRAILER HAVING ROUNDED CORNERS AT THE FORWARD END MAY BE USED AS LONG AS THE ROUNDED PORTION DOES NOT INTERFERE WITH POSITIONING THE CONTAINERS, OR THE PLACEMENT AND NAILING OF THE DUNNAGE.
3. THE DEPICTED LOAD CONFIGURATION MAY BE ADJUSTED TO SATISFY THE QUANTITY OF ITEMS TO BE SHIPPED BY REFERRING TO PAGES 14 AND 15 FOR A NINE OR A ELEVEN UNIT LOAD. WHEN OUTLOADING A TEN UNIT LOAD, OMIT THE SECOND LAYER OF THE CENTER STACK AND USE PROCEDURES DEPICTED ON PAGE 13 FOR STRAPPING REQUIREMENTS.
4. FORWARD ENDS OF LATERALLY ADJACENT CONTAINERS SHOULD BE ALTERNATED TO PROVIDE CLEARANCE FOR CONTAINER HARDWARE, IF APPLICABLE.
5. WHEN SHIPPING EMPTY CONTAINERS THE FOLLOWING IS APPLICABLE:
 - A. DELETE THREE (3) 2" X 6" X 18" BACK-UP CLEATS FROM EACH END OF THE TRAILER.
 - B. DELETE THE ANTI-SKID PLATES.

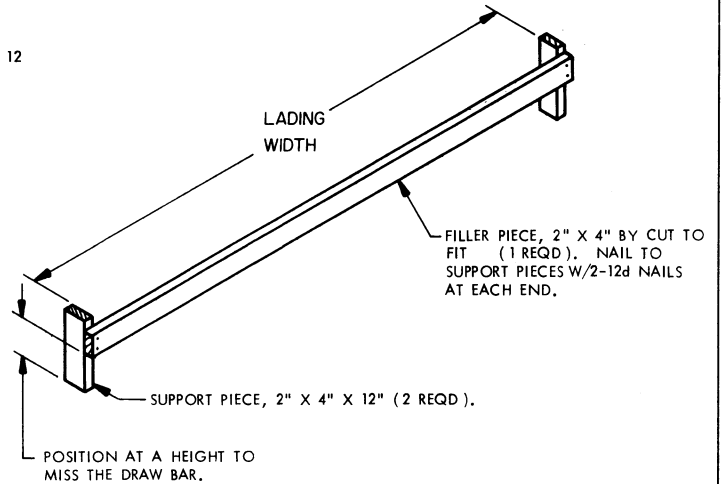
NOTE

IF THE CONTAINERS BEING OFFERED FOR LOADING ARE EQUIPPED WITH A TOW BAR THAT PROTRUDES BEYOND THE LENGTH OF THE CONTAINER BODY, PROVISIONS MUST BE MADE SO THAT A TOW BAR OF A CONTAINER DOES NOT CONTACT THE DUNNAGE ON THE TRAILER OR A TOW BAR OF A LONGITUDINALLY ADJACENT CONTAINER. "SPECIAL DUNNAGE A" BLOCKING SHOWN BELOW DEPICTS THE METHOD FOR KEEPING A TOW BAR FROM CONTACTING A "HEADER" OR "BUFFER PIECE" OF SPECIFIED LOAD BLOCKING DUNNAGE. "SPECIAL DUNNAGE B" BLOCKING SHOWN BELOW DEPICTS A METHOD FOR KEEPING TOW BARS OF LONGITUDINALLY ADJACENT CONTAINERS FROM CONTACTING.



SPECIAL DUNNAGE A

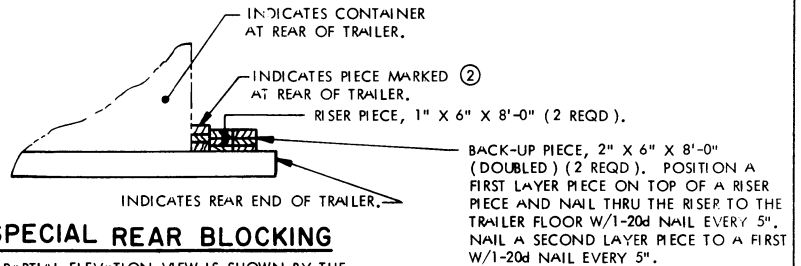
DETAIL ABOVE DEPICTS "FILLER" MATERIAL TO BE INSTALLED TO KEEP TOW BARS FROM CONTACTING A "HEADER" OR "BUFFER PIECE" IF THE TOW BAR EXTENDS BEYOND THE LENGTH OF THE CONTAINER BODY. SEE "NOTE" ABOVE.



SPECIAL DUNNAGE B

DETAIL ABOVE DEPICTS AN ASSEMBLY TO BE INSTALLED BETWEEN LOAD UNITS TO KEEP THE TOW BARS OF LONGITUDINALLY ADJACENT CONTAINERS FROM CONTACTING IF THEY EXTEND BEYOND THE LENGTH OF THE CONTAINER BODY. SEE "NOTE" ABOVE.

BILL OF MATERIAL		
LUMBER	LINEAR FEET	BOARD FEET
1" X 4"	49	16
2" X 2"	72	24
2" X 4"	124	82
2" X 6"	63	63
NAILS	NO. REQD	POUNDS
6d (2")	54	1/2
12d (3-1/4")	148	2-1/2
20d (4")	188	6-3/4
STEEL STRAPPING, 1-1/4" X .035" -----	492'	REQD ----- 70 LBS
STEEL STRAPPING, 2" X .050" -----	204'	REQD ----- 68 LBS
SEAL FOR 1-1/4" STRAPPING -----	36	REQD ----- 2 LBS
SEAL FOR 2" STRAPPING -----	36	REQD ----- 7 LBS
EDGE PROTECTOR -----	12	REQD ----- 3 LBS
ANTI-SKID PLATE -----	36	REQD ----- 9 LBS



SPECIAL REAR BLOCKING

A PARTIAL ELEVATION VIEW IS SHOWN BY THE DETAIL ABOVE. THE SPECIAL REAR BLOCKING PROVISIONS WHICH ARE SHOWN MUST BE APPLIED WHEN SHIPPING A 12-UNIT LOAD OF THE 146" LONG CONTAINERS ON A 40'-0" LONG TRAILER, TO FACILITATE INSTALLATION OF ENOUGH FLOOR-LINE BLOCKING. THE SPECIAL DUNNAGE SPECIFIED AS RISER PIECES AND BACK-UP PIECES WILL BE USED AT THE REAR OF A LOAD IN LIEU OF SEVEN (7) BACK-UP PIECES MARKED ③

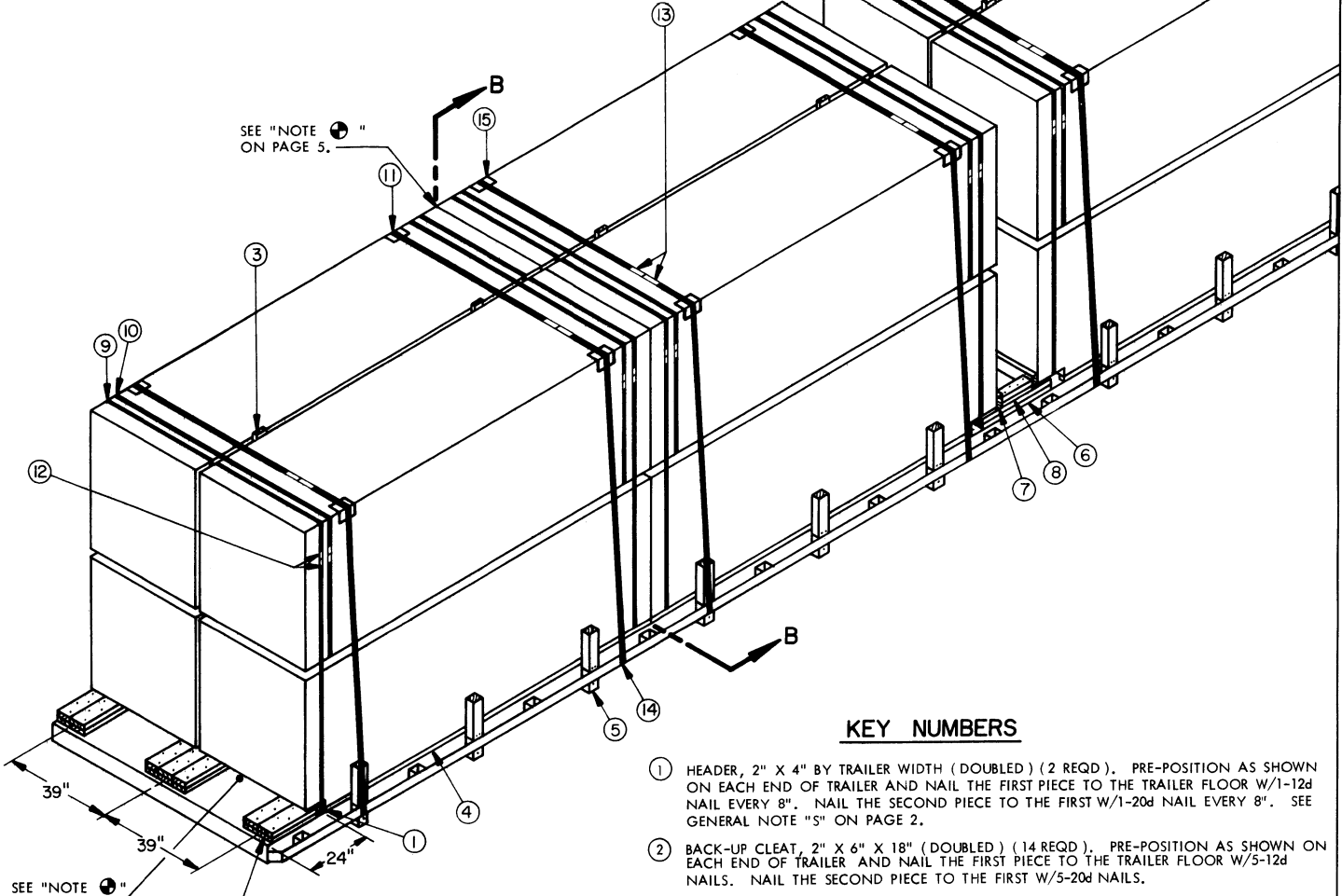
LOAD AS SHOWN

LOAD DEPICTED ON PAGE 4.	ITEM	QUANTITY	WEIGHT (APPROX)
	CONTAINER(W/WARHEAD)-----	12	37,224 LBS
	DUNNAGE -----		632 LBS
	TOTAL WEIGHT -----		37,856 LBS *

* MAXIMUM WEIGHT

(KEY NUMBERS CONTINUED)

- ① ANTI-SKID PLATE (36-5" X 7" PLATES OR 72-3-3/4" X 5" PLATES REQD). POSITION ONE (1) 5" X 7" PLATE OR TWO (2) 3-3/4" X 5" PLATES UNDER EACH RUBBING STRIP OF ALL SECOND LAYER CONTAINERS. SEE "UNITIZATION AND HANDLING PROCEDURES" ON PAGE 3 AND GENERAL NOTE "Q" ON PAGE 2.

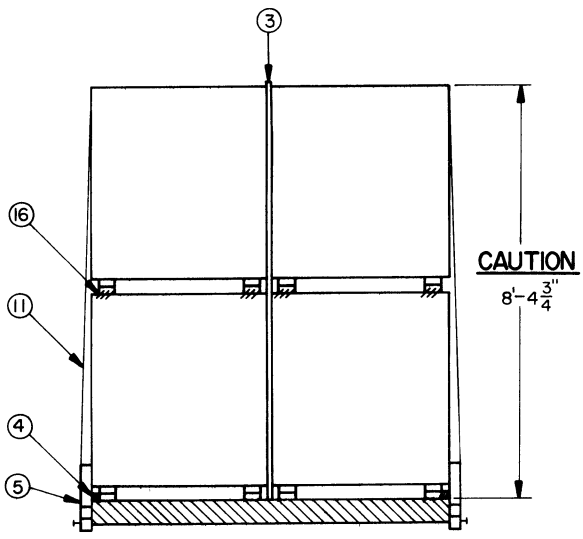


SEE "NOTE 5" ON PAGE 5.

ISOMETRIC VIEW
DEPICTING THE XM473 CONTAINER.

KEY NUMBERS

- ① HEADER, 2" X 4" BY TRAILER WIDTH (DOUBLED) (2 REQD). PRE-POSITION AS SHOWN ON EACH END OF TRAILER AND NAIL THE FIRST PIECE TO THE TRAILER FLOOR W/1-12d NAIL EVERY 8". NAIL THE SECOND PIECE TO THE FIRST W/1-20d NAIL EVERY 8". SEE GENERAL NOTE "5" ON PAGE 2.
- ② BACK-UP CLEAT, 2" X 6" X 18" (DOUBLED) (14 REQD). PRE-POSITION AS SHOWN ON EACH END OF TRAILER AND NAIL THE FIRST PIECE TO THE TRAILER FLOOR W/5-12d NAILS. NAIL THE SECOND PIECE TO THE FIRST W/5-20d NAILS.
- ③ ANTI-CHAFING BOARD, 1" X 4" X 9'-0" (6 REQD).
- ④ FILLER PIECE, 2" X 2" X 10'-0" (6 REQD). POSITION UNDER EDGE OF CONTAINER AGAINST THE SKID. SEE "ALTERNATIVE SIDE BLOCKING METHOD" DETAIL ON PAGE 16.
- ⑤ STUB STAKE (18 REQD). SIZE TO FIT STAKE POCKET. CUT TO EXTEND 9" ABOVE TRAILER FLOOR AND 3" BELOW STAKE POCKET. DRIVE ONE-12d NAIL INTO STAKE BELOW STAKE POCKET ALLOWING APPROXIMATE ONE INCH TO PROTRUDE. NAIL TO FILLER PIECE W/2-12d NAILS.
- ⑥ RISER PIECE, 2" X 4" BY CUT TO EXTEND 6" UNDER EACH LONGITUDINALLY ADJACENT CONTAINER (DOUBLED) (4 REQD). ALIGN WITH CONTAINER SKIDS AND NAIL FIRST PIECE TO THE TRAILER FLOOR W/5-12d NAILS. NAIL THE SECOND PIECE TO THE FIRST W/5-20d NAILS.
- ⑦ BUFFER PIECE, 2" X 4" X 7'-6" (2 REQD). POSITION ON EDGE ON TOP OF RISER PIECE AS SHOWN IN "PARTIAL ELEVATION VIEW" ON PAGE 7.
- ⑧ STRUT/BACK-UP CLEAT, 2" X 4" BY CUT TO FIT (DOUBLED) (4 REQD). NAIL THE FIRST PIECE TO THE RISER PIECE W/5-20d NAILS. NAIL THE SECOND PIECE TO THE FIRST IN A LIKE MANNER. TOENAIL THE SECOND PIECE TO THE BUFFER PIECE W/2-12d NAILS AT EACH END.
- ⑨ STACK UNITIZING STRAP, 1-1/4" X .035" X 27'-0" STEEL STRAPPING (12 REQD). SEE THE "UNITIZATION AND HANDLING PROCEDURES" ON PAGE 3.
- ⑩ LOAD BUNDLING STRAP, 1-1/4" X .035" X 28'-0" STEEL STRAPPING (6 REQD).
- ⑪ HOLD-DOWN STRAP, 2" X .050" X 30'-0" STEEL STRAPPING (6 REQD). INSTALL EACH STRAP FROM TWO (2) 15'-0" LONG PIECES. SEE GENERAL NOTE "N" ON PAGE 2.
- ⑫ SEAL FOR 1-1/4" STRAPPING (36 REQD, 2 PER STRAP). DOUBLE CRIMP EACH SEAL. SEE GENERAL NOTE "O" ON PAGE 2.
- ⑬ SEAL FOR 2" STRAPPING (36 REQD, 6 PER STRAP). EXCEPT FOR THE SEALS USED TO SECURE THE PADS, DOUBLE CRIMP EACH SEAL. SEE GENERAL NOTE "O" ON PAGE 2.
- ⑭ PAD, 2" X .050" STEEL STRAP 18" LONG (12 REQD). POSITION UNDER AND SEAL TO A HOLD-DOWN STRAP. SEE "DETAIL A" ON PAGE 9. ALTERNATIVE: STAKE POCKET PROTECTOR (24 REQD). USE TWO (2) UNDER EACH ANCHOR POINT WITH A HOLD-DOWN STRAP. SEE "DETAIL B" ON PAGE 9.
- ⑮ EDGE PROTECTOR FOR 2" STRAPPING (12 REQD). POSITION UNDER A HOLD-DOWN STRAP AT THE TOP EDGE OF THE LOAD. SEE GENERAL NOTE "R" ON PAGE 2.

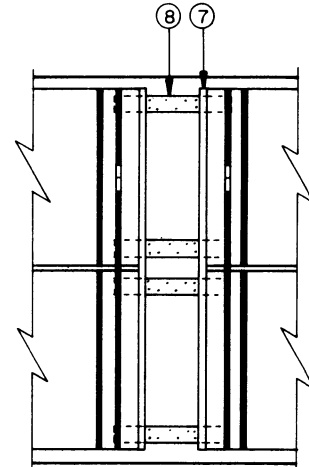


SECTION B-B

(KEY NUMBERS CONTINUED ABOVE)

SPECIAL NOTES

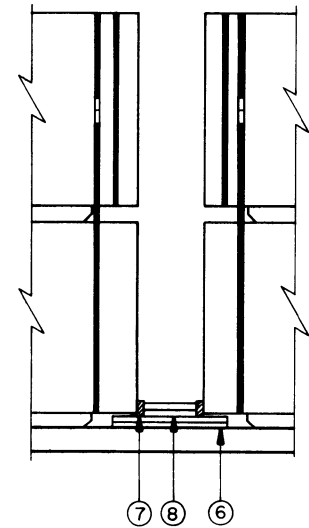
1. A 12-UNIT LOAD OF THE XM473 CONTAINER IS SHOWN ON A 40'-0" LONG BY 8'-0" WIDE FLAT BED TRAILER. **NOTE:** THE AVAILABLE LOADING SURFACE OF THE TRAILER BED MUST MEASURE AT LEAST 39'-0" FOR THE DEPICTED LOADING PROCEDURES TO BE APPLICABLE. A SHORTER TRAILER CANNOT BE USED FOR THE SHIPMENT OF A 12-UNIT LOAD.
2. A TRAILER HAVING ROUNDED CORNERS AT THE FORWARD END MAY BE USED AS LONG AS THE ROUNDED PORTION DOES NOT INTERFERE WITH POSITIONING THE CONTAINERS, OR THE PLACEMENT AND NAILING OF THE DUNNAGE.
3. THE DEPICTED LOAD CONFIGURATION MAY BE ADJUSTED TO SATISFY THE QUANTITY OF ITEMS TO BE SHIPPED BY REFERRING TO PAGES 14 AND 15 FOR A NINE OR A ELEVEN UNIT LOAD. WHEN OUTLOADING A TEN UNIT LOAD, OMIT THE SECOND LAYER OF THE CENTER STACK AND USE PROCEDURES AS DEPICTED ON PAGE 13 FOR STRAPPING REQUIREMENTS.
4. FOR THE SHIPMENT OF EMPTY CONTAINERS THE FOLLOWING IS APPLICABLE:
 - A. DELETE THREE (3) 2" X 6" X 18" BACK-UP CLEATS FROM EACH END OF THE TRAILER.
 - B. DELETE THE ANTI-SKID PLATES.



PARTIAL PLAN VIEW

DEPICTING THE CENTER BLOCKING.

BILL OF MATERIAL		
LUMBER	LINEAR FEET	BOARD FEET
1" X 4"	54	18
2" X 2"	60	20
2" X 4"	118	78
2" X 6"	52	52
NAILS	NO. REQD	POUNDS
12d (3-1/4")	182	3
20d (4")	152	5-1/2
STEEL STRAPPING, 1-1/4" X .035"	492'	REQD --- 70 LBS
STEEL STRAPPING, 2" X .050"	198'	REQD --- 66 LBS
SEAL FOR 1-1/4" STRAPPING	36	REQD --- 2 LBS
SEAL FOR 2" STRAPPING	36	REQD --- 7 LBS
EDGE PROTECTOR	12	REQD --- 3 LBS
ANTI-SKID PLATE	36	REQD --- 9 LBS

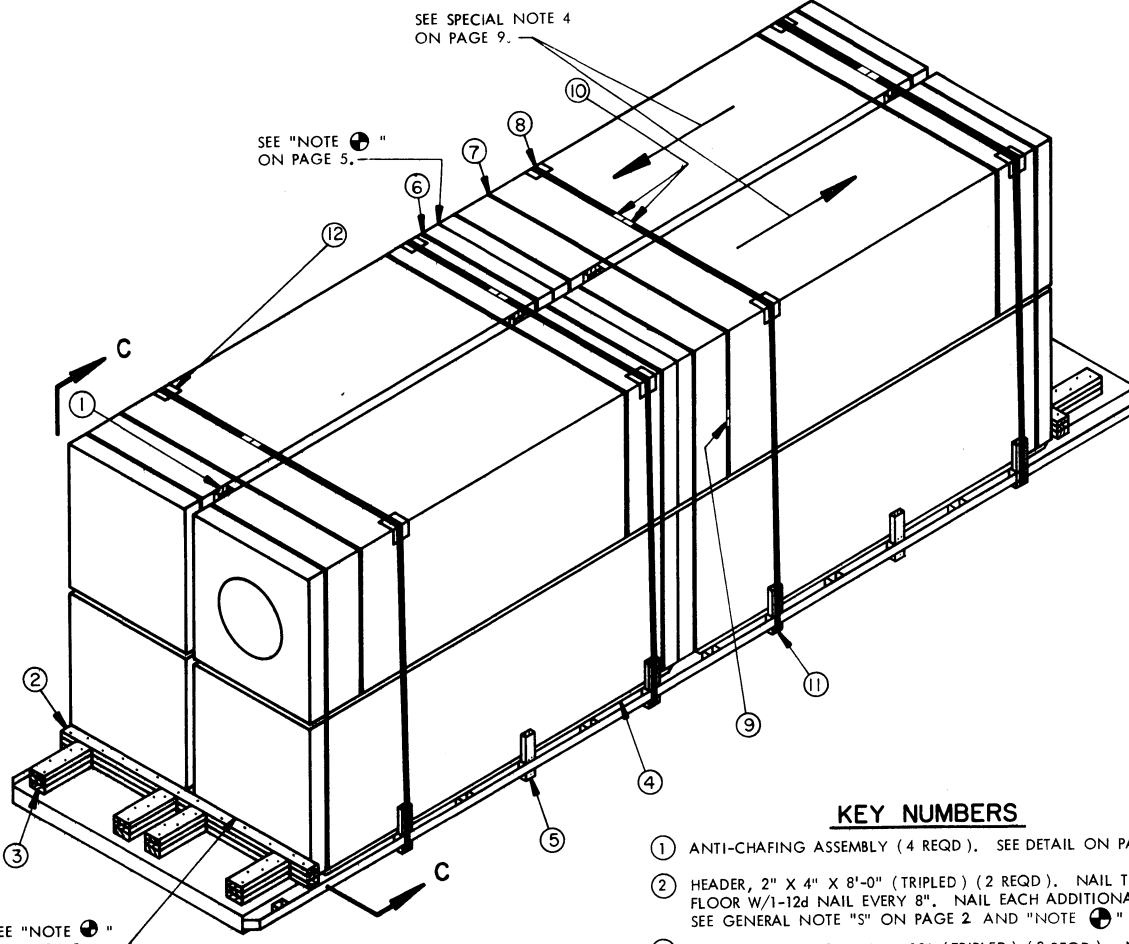


PARTIAL ELEVATION VIEW

DEPICTING THE CENTER BLOCKING.

LOAD AS SHOWN

ITEM	QUANTITY	WEIGHT (APPROX)
XM473 CONTAINER		
(W/WARHEAD)-----	12 -----	34,776 LBS
DUNNAGE -----		586 LBS
TOTAL WEIGHT -----		35,362 LBS

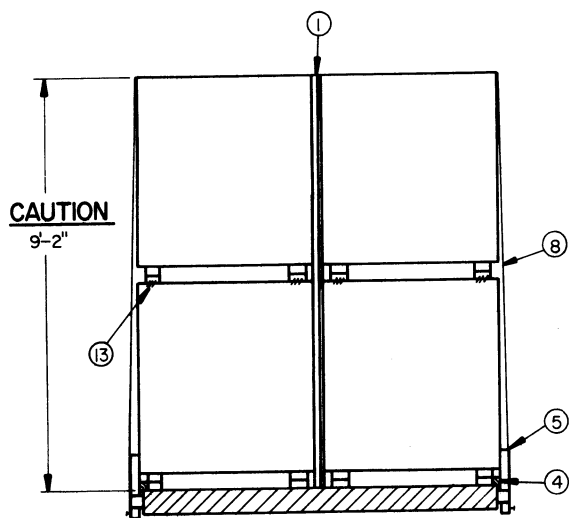


ISOMETRIC VIEW

DEPICTING THE LUMBER OR PLYWOOD SHEATHED CONTAINER.

KEY NUMBERS

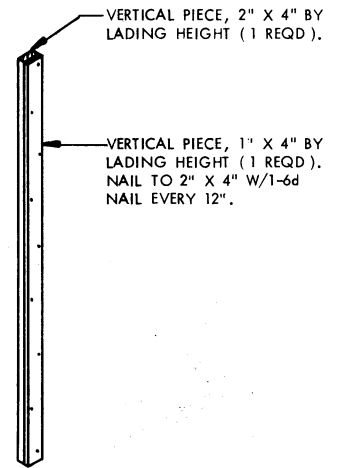
- ① ANTI-CHAFING ASSEMBLY (4 REQD). SEE DETAIL ON PAGE 9.
- ② HEADER, 2" X 4" X 8'-0" (TRIPLED) (2 REQD). NAIL THE FIRST PIECE TO THE TRAILER FLOOR W/1-12d NAIL EVERY 8". NAIL EACH ADDITIONAL PIECE W/1-20d NAIL EVERY 8". SEE GENERAL NOTE "S" ON PAGE 2 AND "NOTE 6" ON PAGE 5.
- ③ BACK-UP CLEAT, 2" X 6" X 18" (TRIPLED) (8 REQD). NAIL THE FIRST PIECE TO THE TRAILER FLOOR W/5-12d NAILS. NAIL EACH ADDITIONAL PIECE W/5-20d NAILS.
- ④ FILLER PIECE, 2" X 2" BY CONTAINER LENGTH (4 REQD). POSITION UNDER EDGE OF CONTAINER AGAINST THE RUBBING STRIP. SEE "ALTERNATIVE SIDE BLOCKING METHOD" DETAIL ON PAGE 16.
- ⑤ STUB STAKE (12 REQD). SIZE TO FIT STAKE POCKET. CUT TO EXTEND 9" ABOVE THE TRAILER FLOOR AND 3" BELOW THE STAKE POCKET. DRIVE ONE-12d NAIL INTO STAKE BELOW STAKE POCKET ALLOWING APPROXIMATE ONE INCH TO PROTRUDE. NAIL TO FILLER PIECE W/2-12d.
- ⑥ STACK UNITIZING STRAP, 1-1/4" X .035" X 27'-0" STEEL STRAPPING (8 REQD). SEE THE "UNITIZATION AND HANDLING PROCEDURES" ON PAGE 3.
- ⑦ LOAD BUNDLING STRAP, 1-1/4" X .035" X 28'-0" STEEL STRAPPING (4 REQD).
- ⑧ HOLD-DOWN STRAP, 2" X .050" X 30'-0" STEEL STRAPPING (4 REQD). INSTALL EACH STRAP FROM TWO (2) 15'-0" LONG PIECES. SEE GENERAL NOTE "N" ON PAGE 2.
- ⑨ SEAL FOR 1-1/4" STRAPPING (24 REQD, 2 PER STRAP). DOUBLE CRIMP EACH SEAL. SEE GENERAL NOTE "O" ON PAGE 2.
- ⑩ SEAL FOR 2" STRAPPING (24 REQD, 6 PER STRAP). EXCEPT FOR THE SEALS USED TO SECURE THE PADS, DOUBLE CRIMP EACH SEAL. SEE GENERAL NOTE "O" ON PAGE 2.
- ⑪ PAD, 2" X .050" STEEL STRAP 18" LONG (8 REQD). POSITION UNDER AND SEAL TO A HOLD-DOWN STRAP. SEE "DETAIL A" ON PAGE 9. ALTERNATIVE: STAKE POCKET PROTECTOR (16 REQD). USE TWO (2) UNDER EACH ANCHOR POINT WITH A HOLD-DOWN STRAP. SEE "DETAIL B" ON PAGE 9.
- ⑫ EDGE PROTECTOR FOR 2" STRAPPING (8 REQD). POSITION UNDER A HOLD-DOWN STRAP AT THE TOP EDGE OF THE LOAD. SEE GENERAL NOTE "R" ON PAGE 2.
- ⑬ ANTI-SKID PLATE (24-5" X 7" PLATES OR 48-3-3/4" X 5" PLATES REQD). POSITION ONE (1) 5" X 7" PLATE OR TWO (2) 3-3/4" X 5" PLATES UNDER EACH RUBBING STRIP OF ALL SECOND LAYER CONTAINERS. SEE "UNITIZATION AND HANDLING PROCEDURES" ON PAGE 3 AND GENERAL NOTE "Q" ON PAGE 2.



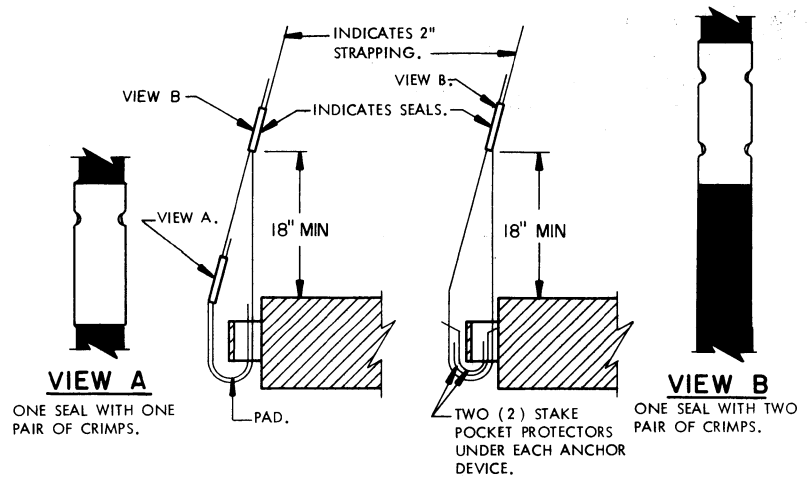
SECTION C-C

SPECIAL NOTES

1. AN 8-UNIT LOAD OF PLYWOOD OR LUMBER SHEATHED CONTAINERS IS SHOWN ON A 30'-0" LONG BY 8'-0" WIDE FLAT BED TRAILER HAVING A NAILABLE FLOOR.
2. A TRAILER HAVING ROUNDED CORNERS AT THE FORWARD END MAY BE USED AS LONG AS THE ROUNDED PORTION DOES NOT INTERFERE WITH POSITIONING THE CONTAINERS, OR THE PLACEMENT AND NAILING OF THE DUNNAGE.
3. THE DEPICTED LOAD CONFIGURATION MAY BE ADJUSTED TO SATISFY THE QUANTITY OF ITEMS TO BE SHIPPED BY REFERRING TO PAGES 14 AND 15 FOR A FIVE OR A SEVEN UNIT LOAD. WHEN OUTLOADING A SIX UNIT LOAD, OMIT THE SECOND LAYER OF ONE LOAD STACK AND USE PROCEDURES AS DEPICTED ON PAGE 13.
4. FORWARD ENDS OF LATERALLY ADJACENT CONTAINERS SHOULD BE ALTERNATED TO PROVIDE CLEARANCE FOR CONTAINER HARDWARE, IF APPLICABLE.
5. THE DEPICTED LOAD IS ALSO APPLICABLE WHEN SHIPPING EIGHT EMPTY CONTAINERS. DELETE THE ANTI-SKID PLATES.



ANTI - CHAFING ASSEMBLY A



DETAIL A

METHOD OF INSTALLING 2" STRAPPING AND PAD AT ANCHORING FACILITY.

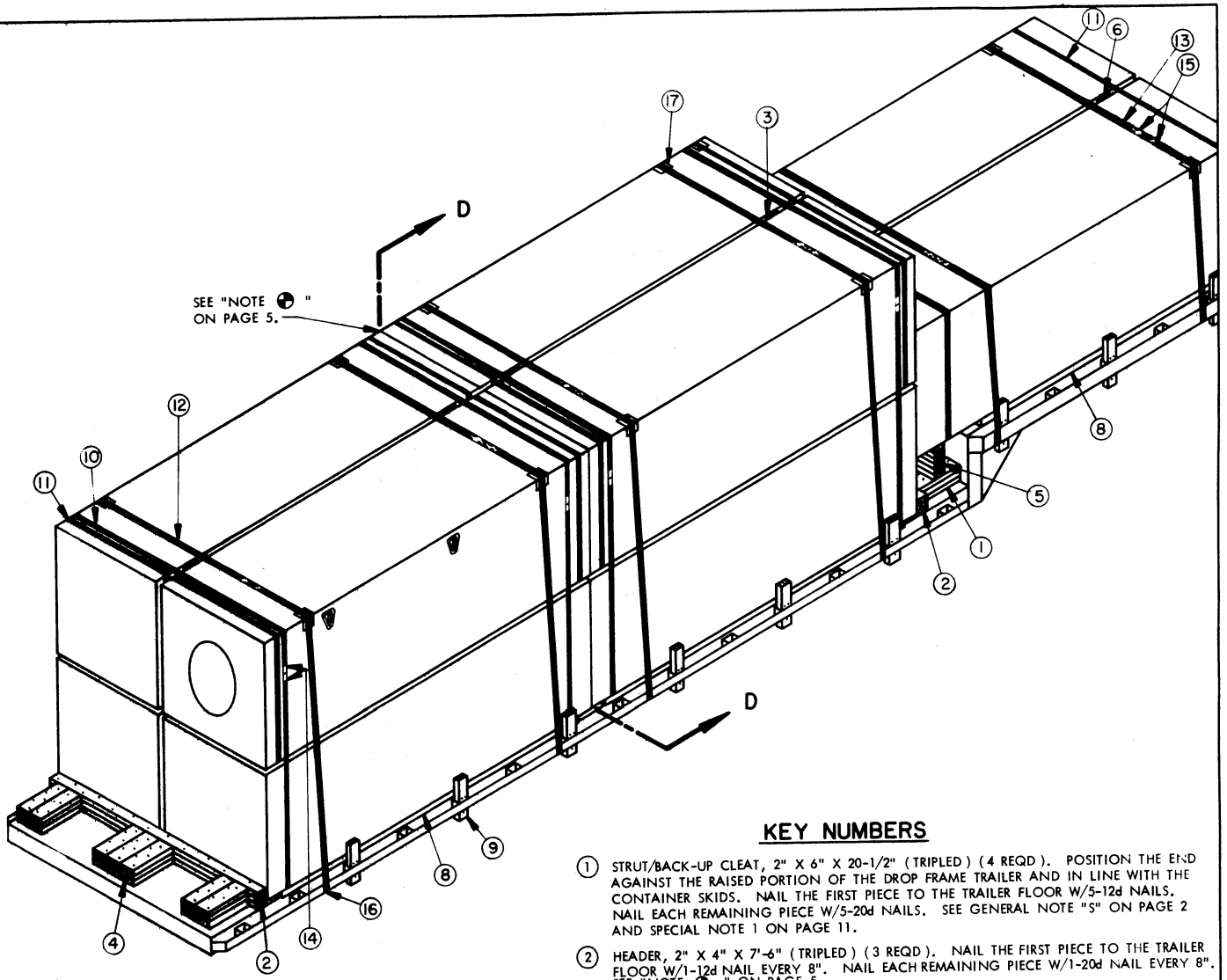
DETAIL B

METHOD OF INSTALLING 2" STRAPPING AND STAKE POCKET PROTECTORS (ALT PAD).

BILL OF MATERIAL		
LUMBER	LINEAR FEET	BOARD FEET
1" X 4"	33	11
2" X 2"	48	16
2" X 4"	99	66
2" X 6"	36	36
NAILS	NO. REQD	POUNDS
6d (2")	36	1/4
12d (3-1/4")	100	1-3/4
20d (4")	128	5
STEEL STRAPPING, 1-1/4" X .035"	328' REQD	47 LBS
STEEL STRAPPING, 2" X .050"	136' REQD	46 LBS
SEAL FOR 1-1/4" STRAPPING	24 REQD	1-1/4 LBS
SEAL FOR 2" STRAPPING	24 REQD	5 LBS
EDGE PROTECTORS	8 REQD	2 LBS
ANTI-SKID PLATES	24 REQD	6 LBS

LOAD AS SHOWN

ITEM	QUANTITY	WEIGHT (APPROX)
CONTAINER(W/WARHEAD)	8	27,280 LBS
DUNNAGE		437 LBS
TOTAL WEIGHT		27,717 LBS*
MAXIMUM WEIGHT*		



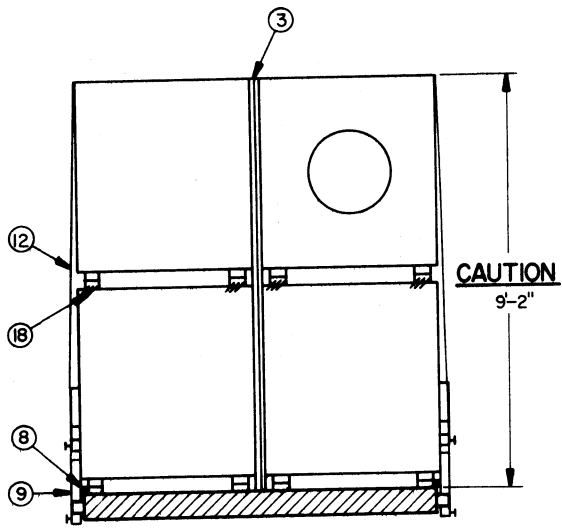
SEE "NOTE 5" ON PAGE 5.

ISOMETRIC VIEW

DEPICTING THE LUMBER OR PLYWOOD SHEATHED CONTAINER.

KEY NUMBERS

- ① STRUT/BACK-UP CLEAT, 2" X 6" X 20-1/2" (TRIPLED) (4 REQD). POSITION THE END AGAINST THE RAISED PORTION OF THE DROP FRAME TRAILER AND IN LINE WITH THE CONTAINER SKIDS. NAIL THE FIRST PIECE TO THE TRAILER FLOOR W/5-12d NAILS. NAIL EACH REMAINING PIECE W/5-20d NAILS. SEE GENERAL NOTE "5" ON PAGE 2 AND SPECIAL NOTE 1 ON PAGE 11.
- ② HEADER, 2" X 4" X 7'-6" (TRIPLED) (3 REQD). NAIL THE FIRST PIECE TO THE TRAILER FLOOR W/1-12d NAIL EVERY 8". NAIL EACH REMAINING PIECE W/1-20d NAIL EVERY 8". SEE "NOTE 5" ON PAGE 5.
- ③ ANTI-CHAFING ASSEMBLY FOR A TWO CONTAINER HIGH STACK (4 REQD). SEE "ANTI-CHAFING ASSEMBLY A" ON PAGE 9.
- ④ REAR BACK-UP CLEAT, 2" X 6" X 18" (TRIPLED) (7 REQD). NAIL THE FIRST PIECE TO THE TRAILER FLOOR W/5-12d NAILS. NAIL EACH REMAINING PIECE W/5-20d NAILS.
- ⑤ SUPPORT PIECE, SEVERAL THICKNESSES OF 2" AND/OR 1" MATERIAL BY 6" WIDE, AS REQUIRED TO EQUAL THE HEIGHT OF THE RAISED FORWARD DECK. THESE PIECES WILL BE AS LONG AS REQUIRED TO SPAN THE STRUT/BACK-UP CLEATS. (REQUIRED AT ONE LOCATION). NAIL THE FIRST PIECE TO THE STRUT/BACK-UP CLEAT W/3-10d NAILS AT EACH JOINT. NAIL EACH ADDITIONAL PIECE W/1-10d NAIL EVERY 12". SEE "PARTIAL ELEVATION" VIEW AND SPECIAL NOTE 1 ON PAGE 11.
- ⑥ ANTI-CHAFING ASSEMBLY FOR A ONE CONTAINER HIGH STACK (2 REQD). SEE "ANTI-CHAFING ASSEMBLY A" ON PAGE 9.
- ⑦ FORWARD BACK-UP CLEAT, 2" X 6" X 18" (TRIPLED) (4 REQD). SEE "PARTIAL PLAN VIEW" ON PAGE 11. ALIGN WITH CONTAINER SKIDS AND NAIL THE FIRST PIECE TO THE TRAILER FLOOR W/5-12d NAILS. NAIL EACH ADDITIONAL PIECE W/5-20d NAILS.
- ⑧ FILLER PIECE, 2" X 2" BY CONTAINER LENGTH (6 REQD). POSITION UNDER EDGE OF CONTAINER AGAINST RUBBING STRIP. FILLER PIECE UNDER THE EDGE OF CONTAINERS ON THE RAISED FORWARD DECK MAY BE 24" LESS THAN CONTAINER LENGTH. SEE "ALTERNATIVE SIDE BLOCKING METHOD" DETAIL ON PAGE 16.
- ⑨ STUB STAKE (18 REQD). SIZE TO FIT STAKE POCKET. CUT TO EXTEND 9" ABOVE TRAILER FLOOR AND 3" BELOW STAKE POCKET. DRIVE ONE-12d NAIL INTO STAKE BELOW STAKE POCKET ALLOWING APPROXIMATE ONE INCH TO PROTRUDE. NAIL TO FILLER PIECE W/2-12d NAILS.
- ⑩ STACK UNITIZING STRAP, 1-1/4" X .035" X 28'-0" STEEL STRAPPING (8 REQD). SEE THE "UNITIZATION AND HANDLING PROCEDURES" ON PAGE 3.
- ⑪ LOAD BUNDLING STRAP, 1-1/4" X .035" X 28'-0" STEEL STRAPPING (6 REQD).
- ⑫ HOLD-DOWN STRAP FOR A TWO CONTAINER HIGH STACK, 2" X .050" X 30'-0" STEEL STRAPPING (4 REQD). INSTALL EACH STRAP FROM TWO (2) 15'-0" LONG PIECES. SEE GENERAL NOTE "N" ON PAGE 2.
- ⑬ HOLD-DOWN STRAP FOR A ONE CONTAINER HIGH STACK, 2" X .050" X 24'-0" STEEL STRAPPING (2 REQD). INSTALL EACH STRAP FROM TWO (2) 12'-0" LONG PIECES. SEE GENERAL NOTE "N" ON PAGE 2.
- ⑭ SEAL FOR 1-1/4" STRAPPING (28 REQD, 2 PER STRAP). DOUBLE CRIMP EACH SEAL. SEE GENERAL NOTE "O" ON PAGE 2.
- ⑮ SEAL FOR 2" STRAPPING (36 REQD, 6 PER STRAP). EXCEPT FOR THE SEALS USED TO SECURE THE PADS DOUBLE CRIMP EACH SEAL. SEE GENERAL NOTE "O" ON PAGE 2.



CAUTION
9'-2"

SECTION D-D

10-UNIT LOAD ON A 40'-0" LONG DROP FRAME TRAILER

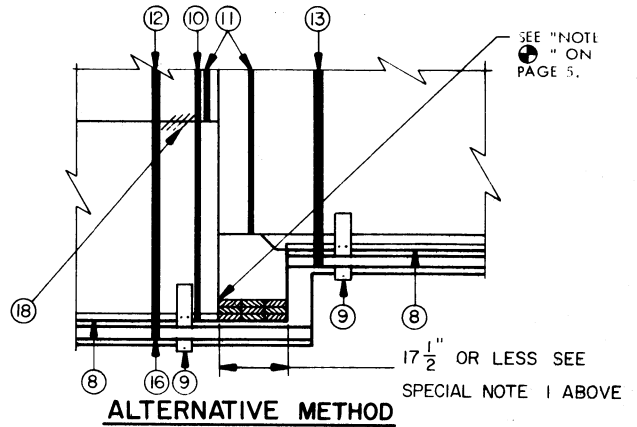
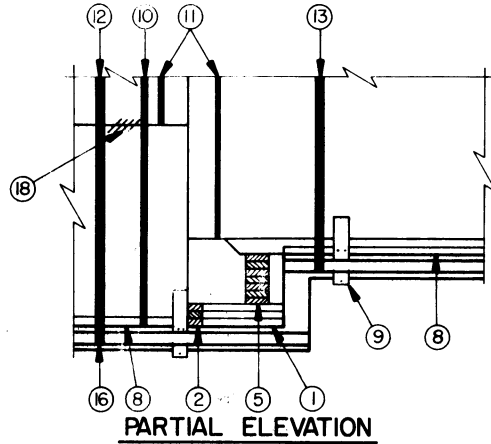
(KEY NUMBERS CONTINUED ON PAGE 11)

(KEY NUMBERS CONTINUED FROM PAGE 10)

- 16 PAD, 2" X .050" STEEL STRAP 18" LONG (12 REQD). POSITION HEADER AND SEAL TO A HOLD-DOWN STRAP. SEE "DETAIL A" ON PAGE 9.
ALTERNATIVE: STAKE POCKET PROTECTOR (24 REQD). USE TWO (2) UNDER EACH ANCHOR POINT WITH A HOLD-DOWN STRAP. SEE "DETAIL B" ON PAGE 9.
- 17 EDGE PROTECTOR FOR 2" STRAPPING (12 REQD). POSITION UNDER A HOLD-DOWN STRAP AT THE TOP EDGE OF THE LOAD. SEE GENERAL NOTE "R" ON PAGE 2.
- 18 ANTI-SKID PLATE (24-5" X 7" PLATES OR 48-3-3/4" X 5" PLATES REQD). POSITION ONE (1) 5" X 7" PLATE OR TWO (2) 3-3/4" X 5" PLATES UNDER EACH RUBBING STRIP OF ALL SECOND LAYER CONTAINERS. SEE "UNITIZATION AND HANDLING PROCEDURES" ON PAGE 3 AND GENERAL NOTE "Q" ON PAGE 2.

SPECIAL NOTES

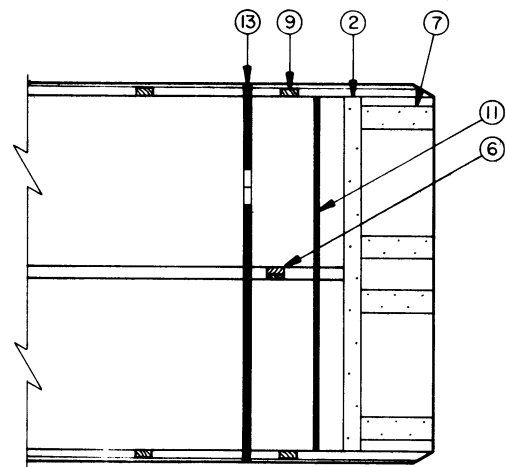
1. A 10-UNIT LOAD OF THE PLYWOOD OR LAMBER SHEATHED CONTAINER IS SHOWN ON A 40'-0" LONG BY 8'-0" WIDE DROP FRAME TRAILER HAVING A NAILABLE FLOOR. THE FORWARD DECK DEPICTED IS 12'-0" LONG, ELEVATED 12" ABOVE THE REAR FLOOR. AS THE HEIGHT OF THE FORWARD DECK VARIES, THE HEIGHT OF THE SUPPORT PIECE, PIECE MARKED (1), MUST VARY PROPORTIONALLY. THE LENGTH OF THE ELEVATED FORWARD DECK CAN VARY FROM 12'-0" TO 13'-11" AND THE LENGTH OF THE REAR PLATFORM CAN THEN VARY FROM 28'-0" TO 26'-11" PROPORTIONATELY. THE LENGTH OF STRUT/BACK-UP CLEATS WILL VARY ACCORDINGLY. WHEN THE VOID BETWEEN THE TWO-HIGH CONTAINER STACKS AND THE ELEVATED FORWARD DECK IS 17-1/2" OR LESS USE SOLID FILL MATERIAL NAILED TO THE TRAILER AS DEPICTED IN THE "ALTERNATIVE METHOD" VIEW AT THE RIGHT AND NAIL THE SAME AS THE HEADER, PIECE MARKED (2). DELETE THE SUPPORT PIECE, PIECE MARKED (5). WHEN OUTLOADING A 40'-0" TRAILER, WITH A 13'-11" ELEVATED FORWARD DECK, THE TWO HIGH CONTAINER STACK MAY BE POSITIONED DIRECTLY AGAINST THE RAISED PORTION OF THE TRAILER.
2. THE DEPICTED LOAD CONFIGURATION MAY BE ADJUSTED TO SATISFY THE QUANTITY OF ITEMS TO BE SHIPPED BY REFERRING TO PAGES 14 AND 15 FOR AN ODD NUMBER OF CONTAINERS.
3. FORWARD ENDS OF LATERALLY ADJACENT CONTAINERS SHOULD BE ALTERNATED TO PROVIDE CLEARANCE FOR CONTAINER HARDWARE, IF APPLICABLE.
4. THE DEPICTED LOAD IS ALSO APPLICABLE WHEN SHIPPING TEN EMPTY CONTAINERS. DELETE THE ANTI-SKID PLATES.
5. WHEN OUTLOADING TEN XM473 CONTAINERS A COMBINATION OF PROCEDURES DEPICTED ON PAGES 6 AND 10 WILL BE REQUIRED.
 - A. DELETE THE REAR HEADER AND BACK-UP CLEATS SHOWN ON PAGE 10 AND USE REAR BLOCKING, PRE-POSITION, AS DEPICTED ON PAGE 6.
 - B. DELETE STRUT/BACK-UP CLEAT, PIECE MARKED (1), AND HEADER, PIECE MARKED (2), AND USE CENTER BLOCKING, PIECES MARKED (6), (7), AND (8), DEPICTED ON PAGES 6 AND 7. ONE END OF THE CENTER BLOCKING WILL BE POSITIONED DIRECTLY AGAINST THE ELEVATED FRONT DECK WALL.
 - C. DELETE THE FORWARD BACK-UP CLEAT, PIECE MARKED (7), AND HEADER, PIECE MARKED (2), AND USE PRE-POSITIONED HEADER AND BACK-UP CLEATS AS DEPICTED ON PAGE 6.
 - D. THE REMAINING BLOCKING WILL BE AS DEPICTED ON PAGES 10 AND 11.



BILL OF MATERIAL		
LUMBER	LINEAR FEET	BOARD FEET
1" X 4"	40	13
1" X 6"	8	4
2" X 2"	144	46
2" X 4"	67	44
2" X 6"	100	100
NAILS	NO. REQD	POUNDS
6d (2")	44	1/4
12d (3-1/4")	212	3-1/2
20d (4")	222	8
STEEL STRAPPING, 1-1/4" X .035"	384	REQD --- 55 LBS
STEEL STRAPPING, 2" X .050"	188	REQD --- 63 LBS
SEAL FOR 1-1/4" STRAPPING	28	REQD --- 1-1/4 LBS
SEAL FOR 2" STRAPPING	36	REQD --- 7 LBS
EDGE PROTECTOR	12	REQD --- 3 LBS
ANTI-SKID PLATE	24	REQD --- 6 LBS

LOAD AS SHOWN

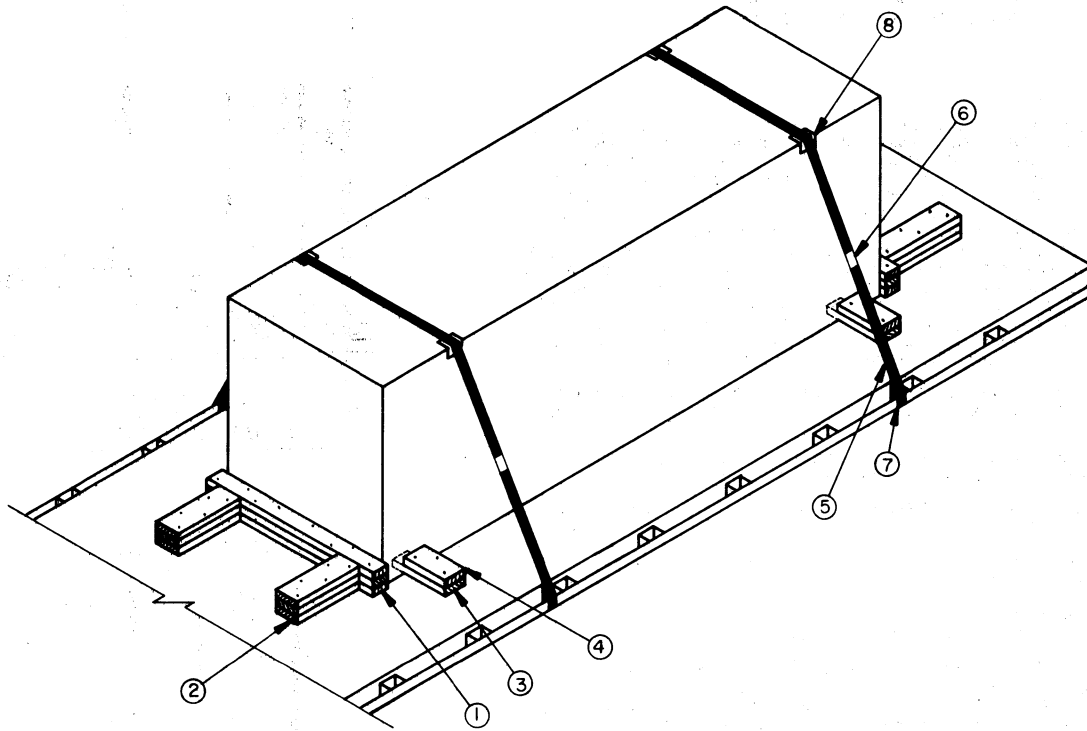
ITEM	QUANTITY	WEIGHT (APPROX)
CONTAINER(W/WARHEAD)---	10	34,100 LBS
DUNNAGE		670 LBS
TOTAL WEIGHT		34,770 LBS



PARTIAL PLAN VIEW

DEPICTING LOCATION OF FORWARD BLOCKING.

10-UNIT LOAD ON A 40'-0" LONG DROP FRAME TRAILER



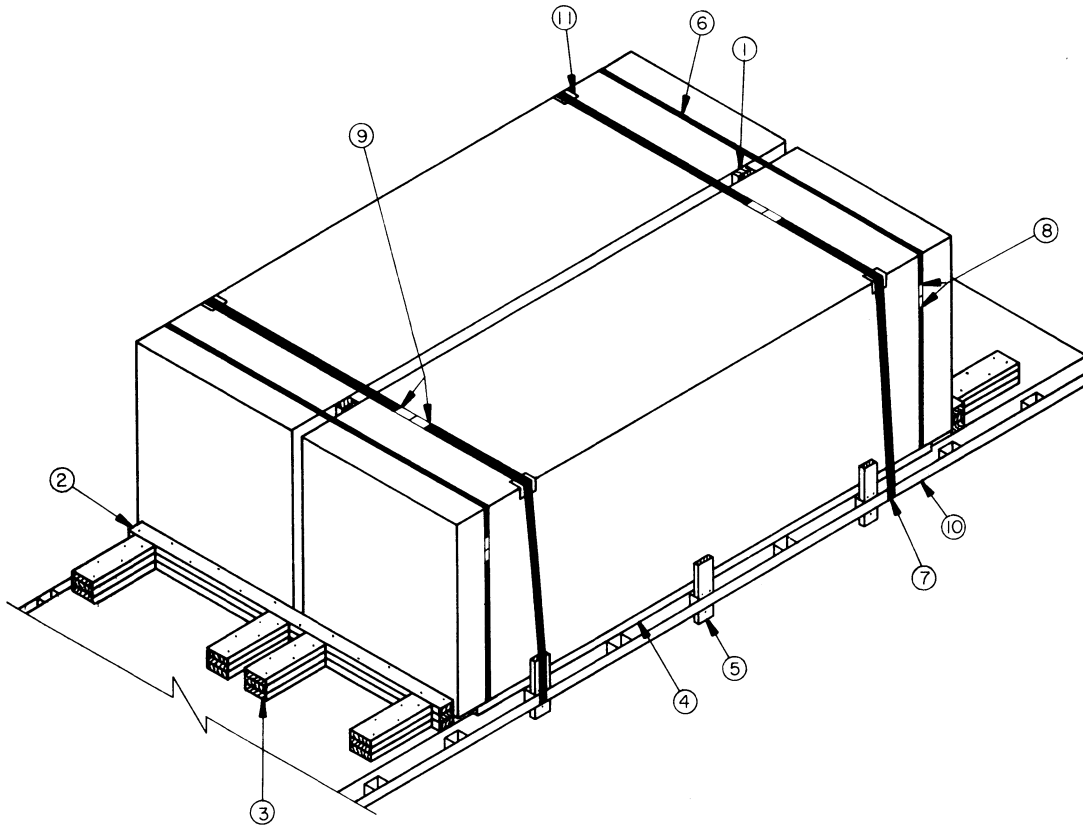
ISOMETRIC VIEW

KEY NUMBERS

SPECIAL NOTES

1. THE TYPICAL LTL, 1-UNIT LOAD IS BASED ON A 8'-0" WIDE FLAT BED TRAILER HAVING A NAILABLE FLOOR. THE CONTAINER DEPICTED IS THE PLYWOOD OR LUMBER SHEATHED CONTAINER. WHEN SHIPPING A 1-UNIT LTL LOAD OF THE XM473 CONTAINER SEE "SPECIAL BLOCKING FOR THE XM473 CONTAINER" DETAIL ON PAGE 16. DECREASE THE LENGTH OF THE HEADER AND QUANTITY OF BACK-UP CLEATS AS APPLICABLE.
2. TWO (2) BACK-UP CLEATS, SHOWN AS PIECES MARKED ②, ARE ADEQUATE FOR RETAINING A MAXIMUM LTL LOAD OF NOT GREATER THAN 10,000 POUNDS.

- ① HEADER, 2" X 4" X 48" (TRIPLED) (2 REQD). NAIL THE FIRST PIECE TO THE TRAILER FLOOR W/7-12d NAILS. NAIL EACH ADDITIONAL PIECE W/7-20d NAILS. SEE GENERAL NOTE "S" ON PAGE 2 AND "NOTE Ⓢ" ON PAGE 5.
- ② BACK-UP CLEAT, 2" X 6" X 18" (TRIPLED) (4 REQD). NAIL THE FIRST PIECE TO THE TRAILER FLOOR W/5-12d NAILS. NAIL EACH ADDITIONAL PIECE W/5-20d NAILS.
- ③ SIDE BLOCKING, 2" X 6" X 15" (4 REQD). NAIL TO THE TRAILER FLOOR W/3-12d NAILS.
- ④ SIDE BLOCKING, 2" X 6" X 12" (4 REQD). NAIL TO THE 15" SIDE BLOCKING PIECE W/3-12d NAILS.
- ⑤ HOLD-DOWN STRAP, 2" X .050" X 23'-0" STEEL STRAPPING (2 REQD). INSTALL EACH STRAP FROM ONE PIECE OF STRAPPING; ANCHOR IT ON ONE SIDE OF THE TRAILER, RUN IT OVER THE LOAD, PASS IT THROUGH AN ANCHOR DEVICE ON THE OPPOSITE SIDE OF THE TRAILER, AND BRING IT BACK UP ABOVE THE ANCHOR DEVICE WHERE IT CAN BE TENSIONED AND SEALED. SEE GENERAL NOTE "N" ON PAGE 2.
- ⑥ SEAL FOR 2" STRAPPING (8 REQD, 4 PER STRAP). EXCEPT FOR THE SEALS USED TO SECURE THE PADS, DOUBLE CRIMP EACH SEAL. SEE GENERAL NOTE "O" ON PAGE 2.
- ⑦ PAD, 2" X .050" STEEL STRAP 18" LONG (4 REQD). POSITION UNDER AND SEAL TO A HOLD-DOWN STRAP. SEE "DETAIL A" ON PAGE 9. ALTERNATIVE: STAKE POCKET PROTECTOR (8 REQD). USE TWO (2) UNDER EACH ANCHOR POINT WITH A HOLD-DOWN STRAP. SEE "DETAIL B" ON PAGE 9.
- ⑧ EDGE PROTECTOR FOR 2" STRAPPING (4 REQD). POSITION UNDER A HOLD-DOWN STRAP AT THE TOP EDGE OF THE LOAD. SEE GENERAL NOTE "R" ON PAGE 2.



ISOMETRIC VIEW

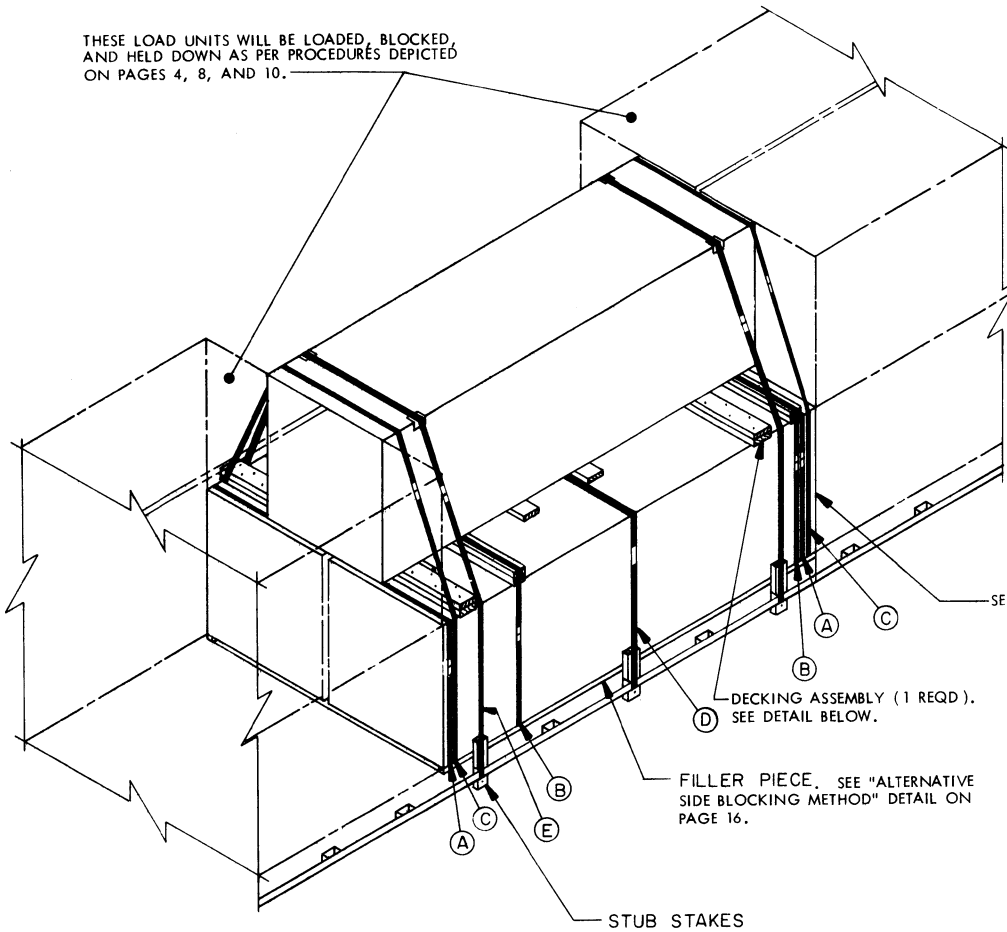
SPECIAL NOTES

1. THE TYPICAL LTL, 2-UNIT LOAD IS BASED ON A 8'-0" WIDE FLAT BED TRAILER HAVING A NAILABLE FLOOR. THE CONTAINER DEPICTED IS THE PLYWOOD OR LUMBER SHEATHED CONTAINER. WHEN SHIPPING A 2-UNIT LTL LOAD OF THE XM473 CONTAINER SEE "SPECIAL BLOCKING FOR THE XM473 CONTAINER" DETAIL ON PAGE 16.
2. FOUR (4) BACK-UP CLEATS, SHOWN AS PIECES MARKED ③, ARE ADEQUATE FOR RETAINING A MAXIMUM LTL LOAD OF NOT GREATER THAN 20,000 POUNDS.
3. WHEN UNLOADING THE XM473 CONTAINER THE THICKNESS OF THE "ANTI-CHAFING ASSEMBLY" MAY BE DECREASED TO THE THICKNESS REQUIRED TO PROVIDE CLEARANCE BETWEEN THE HARDWARE OF LATERALLY ADJACENT CONTAINERS. ALSO, THE WIDTH OF THE FILLER PIECE WILL HAVE TO BE INCREASED TO PROVIDE A SNUG FIT BETWEEN THE CONTAINER'S RUBBING STRIP AND THE STUB STAKES. THIS MAY BE ACCOMPLISHED BY RIPPING A WIDER PIECE OF DUNNAGE, OR BY "NOTCHING" OUT A WIDER PIECE OF DUNNAGE TO PROVIDE CLEARANCE FOR THE STUB STAKES.

KEY NUMBERS

- ① ANTI-CHAFING ASSEMBLY FOR A ONE-HIGH CONTAINER STACK (2 REQD). SEE "ANTI-CHAFING ASSEMBLY A" ON PAGE 9 AND SPECIAL NOTE 3 BELOW.
- ② HEADER, 2" X 4" X 8'-0" (TRIPLED) (2 REQD). NAIL THE FIRST PIECE TO THE TRAILER FLOOR W/1-12d NAIL EVERY 8". NAIL EACH ADDITIONAL PIECE W/1-20d NAIL EVERY 8". SEE GENERAL NOTE "S" ON PAGE 2 AND "NOTE 4" ON PAGE 5.
- ③ BACK-UP CLEAT, 2" X 6" X 18" (TRIPLED) (8 REQD). NAIL THE FIRST PIECE TO THE TRAILER FLOOR W/5-12d NAILS. NAIL EACH ADDITIONAL PIECE W/5-20d NAILS.
- ④ FILLER PIECE, 2" X 2" BY CONTAINER LENGTH (2 REQD). POSITION UNDER EDGE OF CONTAINER AGAINST RUBBING STRIP. SEE SPECIAL NOTE 3 AT LEFT. SEE "ALTERNATIVE SIDE BLOCKING METHOD" DETAIL ON PAGE 16.
- ⑤ STUB STAKE (6 REQD). SIZE TO FIT STAKE POCKET. CUT TO EXTEND 9" ABOVE THE TRAILER FLOOR AND 3" BELOW STAKE POCKET. DRIVE ONE-12d NAIL INTO STAKE BELOW STAKE POCKET ALLOWING APPROXIMATE ONE INCH TO PROTRUDE. NAIL TO FILLER PIECE W/2-12d NAILS.
- ⑥ LOAD BUNDLING STRAP, 1-1/4" X .035" X 28'-0" STEEL STRAPPING (2 REQD).
- ⑦ HOLD-DOWN STRAP, 2" X .050" X 26'-0" STEEL STRAPPING (2 REQD). INSTALL EACH STRAP FROM TWO (2) 13'-0" LONG PIECES. SEE GENERAL NOTE "N" ON PAGE 2.
- ⑧ SEAL FOR 1-1/4" STRAPPING (4 REQD, 2 PER STRAP). DOUBLE CRIMP EACH SEAL. SEE GENERAL NOTE "O" ON PAGE 2.
- ⑨ SEAL FOR 2" STRAPPING (12 REQD, 6 PER STRAP). EXCEPT FOR THE SEALS USED TO SECURE THE PADS, DOUBLE CRIMP EACH SEAL. SEE GENERAL NOTE "O" ON PAGE 2.
- ⑩ PAD, 2" X .050" STEEL STRAP 18" LONG (4 REQD). POSITION UNDER AND SEAL TO A HOLD-DOWN STRAP. SEE "DETAIL A" ON PAGE 9. ALTERNATIVE: STAKE POCKET PROTECTOR (8 REQD). USE TWO (2) UNDER EACH ANCHOR POINT WITH A HOLD-DOWN STRAP. SEE "DETAIL B" ON PAGE 9.
- ⑪ EDGE PROTECTOR FOR 2" STRAPPING (4 REQD). POSITION UNDER A HOLD-DOWN STRAP AT THE TOP EDGE OF THE LOAD. SEE GENERAL NOTE "R" ON PAGE 2.

THESE LOAD UNITS WILL BE LOADED, BLOCKED, AND HELD DOWN AS PER PROCEDURES DEPICTED ON PAGES 4, 8, AND 10.



STRAPPING LEGEND

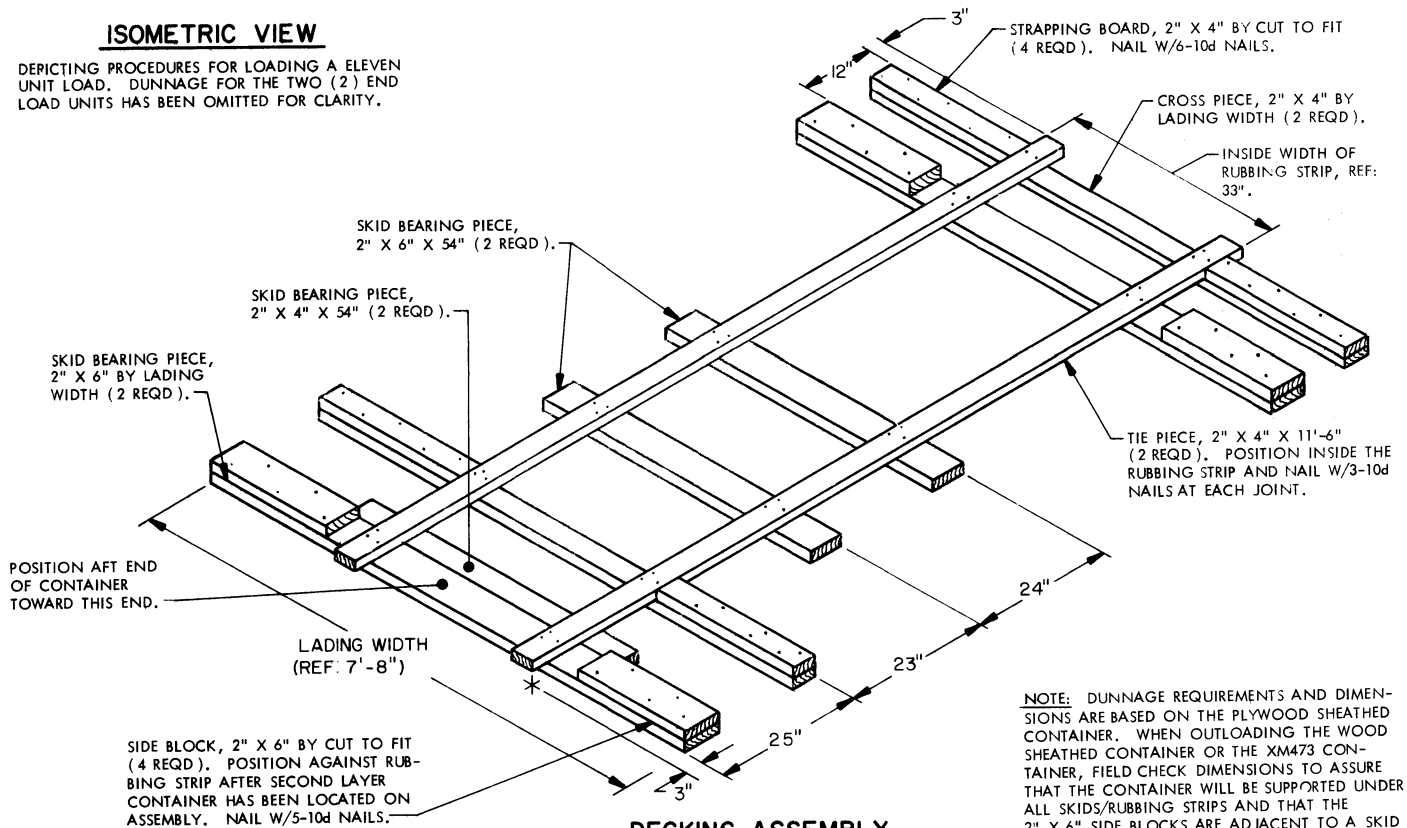
- (A) LOAD BUNDLING STRAP, 1-1/4" X .035" X 27'-0" STEEL STRAPPING (2 REQD).
- (B) DECKING ASSEMBLY HOLD-DOWN STRAP, 1-1/4" X .035" X 29'-0" STEEL STRAPPING (2 REQD). STAPLE TO DECKING ASSEMBLY W/2-1-3/8" X 3/4" STAPLES ON EACH SIDE.
- (C) LOAD BUNDLING STRAP, 1-1/4" X .035" X 33'-0" STEEL STRAPPING (2 REQD).
- (D) BOTTOM LAYER HOLD-DOWN STRAP, 2" X .050" X 26'-0" STEEL STRAPPING (1 REQD). INSTALL FROM TWO (2) 13'-0" LONG PIECES.
- (E) LOAD UNIT HOLD-DOWN STRAP, 2" X .050" X 32'-0" STEEL STRAPPING (2 REQD). INSTALL FROM TWO (2) 16'-0" LONG PIECES.

* EXCEPT FOR THE SEALS USED TO SECURE THE PADS, DOUBLE CRIMP EACH SEAL WITH TWO PAIR OF CRIMPS.

SEE "NOTE ①" ON PAGE 5.

ISOMETRIC VIEW

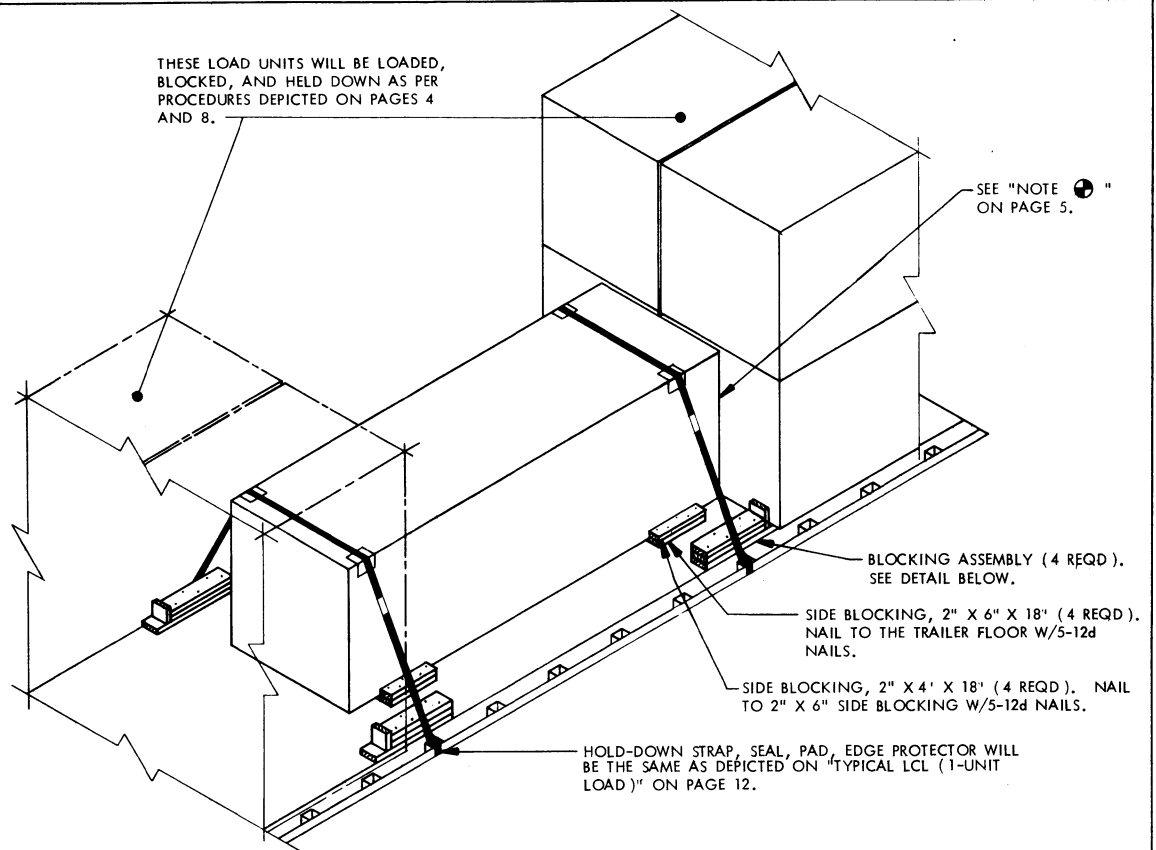
DEPICTING PROCEDURES FOR LOADING A ELEVEN UNIT LOAD. DUNNAGE FOR THE TWO (2) END LOAD UNITS HAS BEEN OMITTED FOR CLARITY.



NOTE: DUNNAGE REQUIREMENTS AND DIMENSIONS ARE BASED ON THE PLYWOOD SHEATHED CONTAINER. WHEN OUTLOADING THE WOOD SHEATHED CONTAINER OR THE XM473 CONTAINER, FIELD CHECK DIMENSIONS TO ASSURE THAT THE CONTAINER WILL BE SUPPORTED UNDER ALL SKIDS/RUBBING STRIPS AND THAT THE 2" X 6" SIDE BLOCKS ARE ADJACENT TO A SKID OR A RUBBING STRIP.

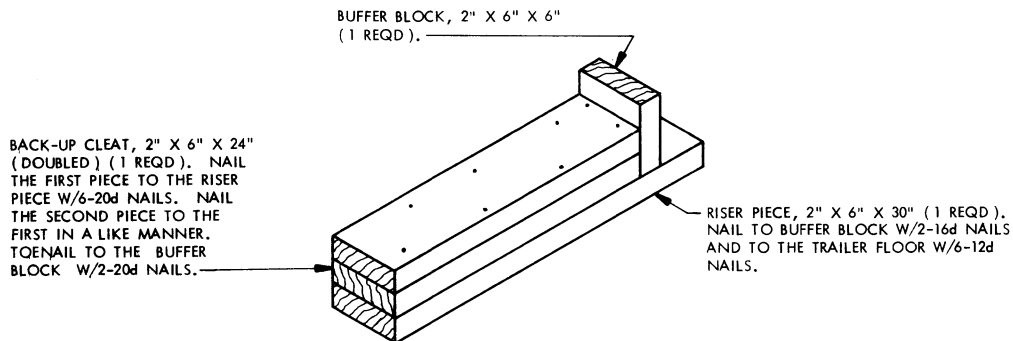
DECKING ASSEMBLY

ONE REQUIRED WHEN SHIPPING AN ELEVEN UNIT LOAD. CAUTION: DO NOT USE NAILS GREATER THAN 10d (3" LONG) WHEN FABRICATING THIS ASSEMBLY.



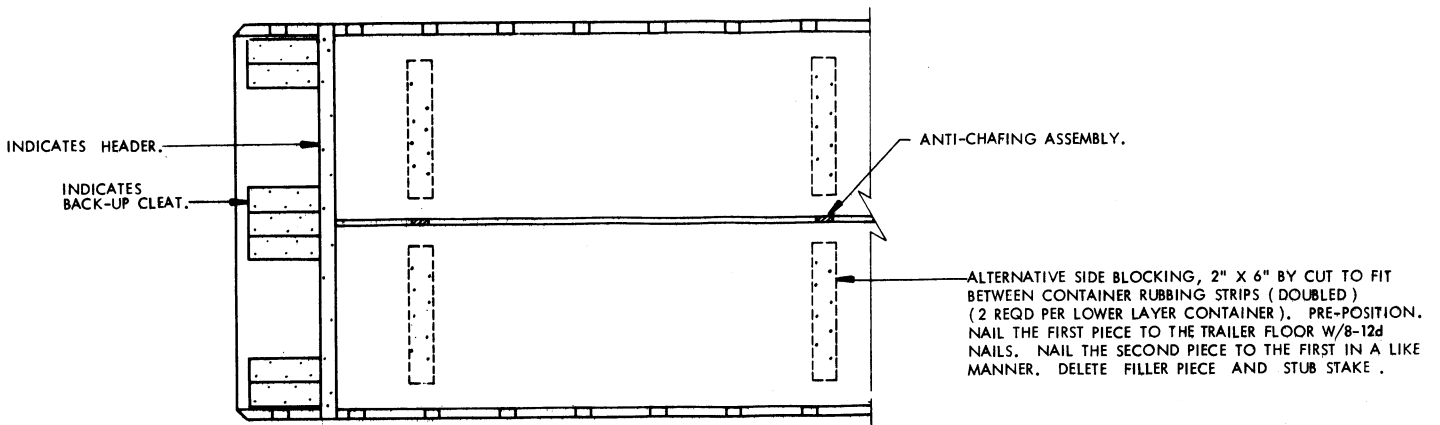
ISOMETRIC VIEW

DEPICTING PROCEDURES FOR LOADING A NINE (9)-UNIT LOAD. DUNNAGE FOR THE TWO (2) END LOAD UNITS HAS BEEN OMITTED FOR CLARITY.



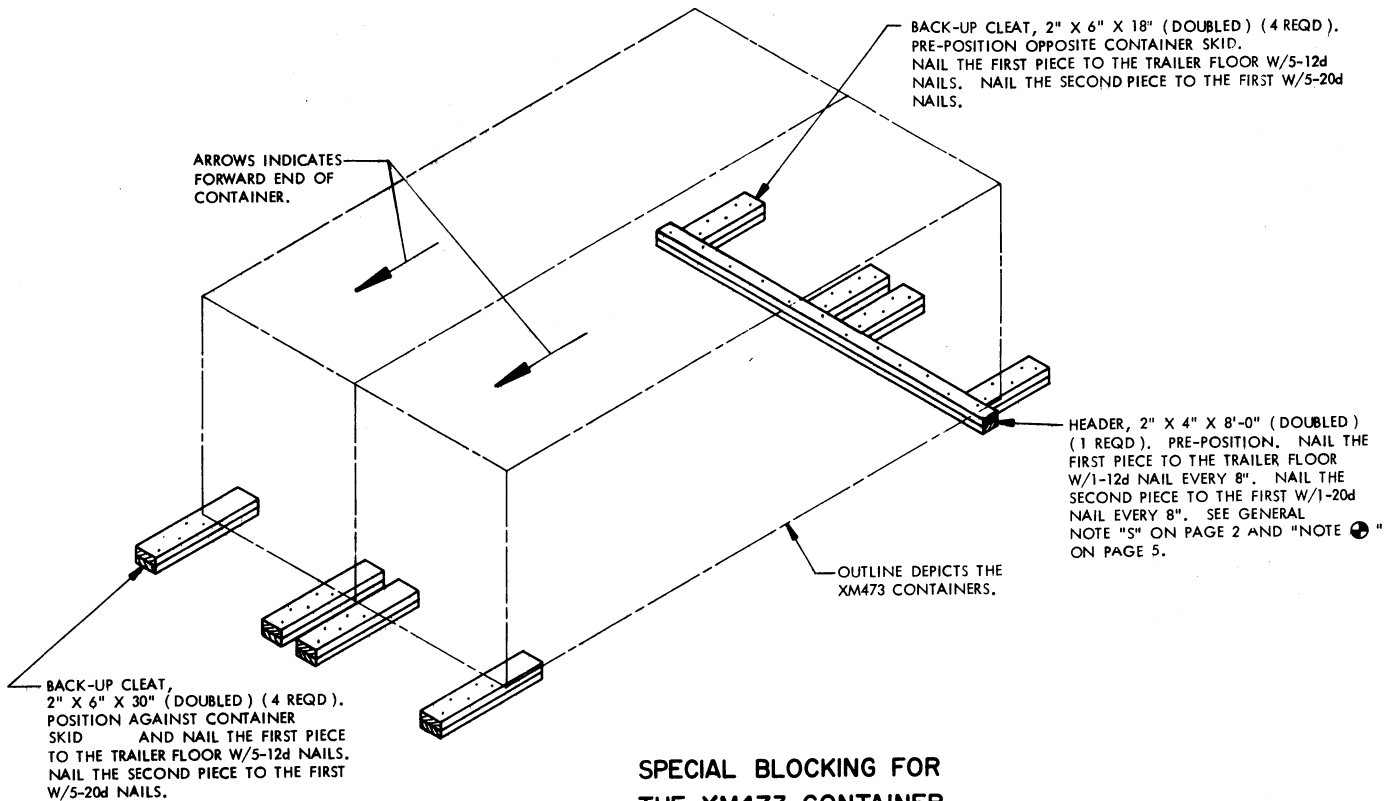
BLOCKING ASSEMBLY

FOUR REQUIRED WHEN LOADING A NINE (9) UNIT LOAD AS DEPICTED ABOVE.



ALTERNATIVE SIDE BLOCKING METHOD

PRE-POSITIONED SIDE BLOCKING MAY BE USED IN LIEU OF FILLER PIECE AND STUB STAKES .



SPECIAL BLOCKING FOR THE XM473 CONTAINER

NOTE: THE ANTI-CHAFING ASSEMBLY, SIDE BLOCKING, LOAD BUNDLING STRAP, HOLD-DOWN STRAP, EDGE PROTECTOR, AND PAD REQUIREMENT WILL BE AS NOTED IN "KEY NUMBERS" ON PAGE 13. THIS METHOD MAY ALSO BE USED WHEN SHIPPING A 1-UNIT LTL LOAD, BY DECREASING THE LENGTH OF THE HEADER AND THE NUMBER OF BACK-UP CLEATS, REFER TO PAGE 12 FOR OTHER REQUIREMENT.