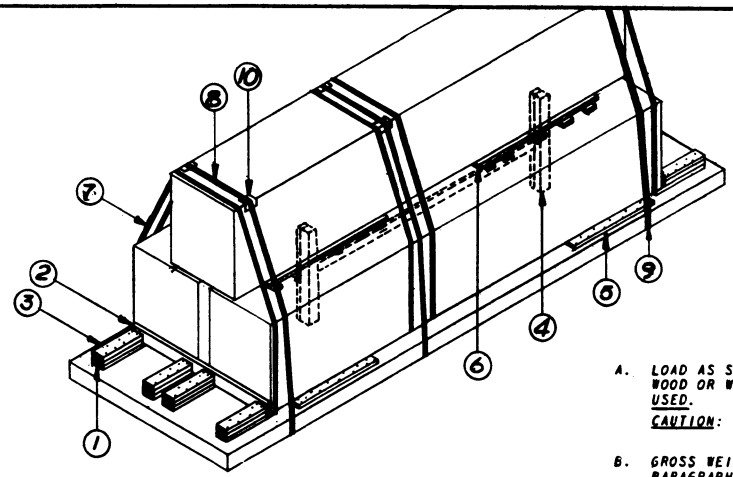


APPROVED
BUREAU OF EXPLOSIVES
A. J. Brasomusk
INSPECTOR
DATE 8/8/62



TYPICAL LTL
KEY NUMBERS (LTL)

- ① 2" x 6" x 30" (8 REQ). EXTEND 4" UNDER CONTAINER AND NAIL TO TRAILER FLOOR W/6-12d NAILS.
- ② 2" x 6" x 7'-0" (2 REQ). POSITION AS SHOWN.
- ③ 2" x 6" x 24" (DOUBLED) (8 REQ). NAIL FIRST PIECE TO ① W/6-20d NAILS. NAIL SECOND PIECE TO FIRST IN LIKE MANNER. TOENAIL SECOND PIECE TO ② W/ 2-12d NAILS.
- ④ ANTI-CHAFING BOARD (1 REQ). SEE DETAIL.
- ⑤ 2" x 6" x 48" (4 REQ). NAIL TO TRAILER FLOOR W/12-12d NAILS.
- ⑥ DECKING ASSEMBLY (2 REQ). SEE DETAIL. ONLY REQUIRED WHEN SHIPPING A THREE(3) UNIT LOAD WITH PLYWOOD SHEATHED CONTAINERS(3) IN BOTTOM LAYER. IF LUMBER SHEATHED CONTAINERS MAKE UP THE BOTTOM LAYER, USE ANTI-SKID PLATES UNDER EACH SKID OF SECOND LAYER CONTAINER, 6 REQ PER CONTAINER.
- ⑦ STEEL STRAPPING, 1 1/2" x .035" x 29'-0" (4 REQ).
- ⑧ STEEL STRAPPING, 2" x .050" x 27'-0" (3 REQ).
- ⑨ PAD 2" x .050" STRAP 18" LONG (6 REQ). POSITION UNDER AND SEAL TO ⑤. SEE DETAIL "A".
ALT: SIGNODE NO. 1 STAKE POCKET PROTECTORS (12 REQ). TWO (2) USED UNDER EACH STAKE POCKET WITH ⑨. SEE DETAIL "B".
- ⑩ EDGE PROTECTORS FOR 2" STRAPPING (6 REQ). SEE GENERAL NOTE "G".

GENERAL NOTES

- A. LOAD AS SHOWN IS BASED ON FLAT BED TRAILER 25'-0" LONG x 8'-0" WIDE WITH WOOD OR WOOD AND METAL FLOOR. TRAILERS WITH ALL METAL FLOORS WILL NOT BE USED.
CAUTION: LADING HEIGHT - FOUR UNIT LOAD 8'-0" THREE UNIT LOAD 8'-1 1/4"
- B. GROSS WEIGHT AND AXLE DISTRIBUTION OF WEIGHT WILL BE IN ACCORDANCE WITH PARAGRAPH 8,346.4, ORDM 3-4, VOL 3.
- C. SELECTION OF VEHICLE TO BE USED TO TRANSPORT GUIDED MISSILE AMMUNITION AND/OR COMPONENTS THEREOF, MUST COMPLY WITH AR 55-355, CHAPTER 213, FOR EXPLOSIVES OR OTHER DANGEROUS ARTICLES, IN FULL.
- D. NOTICE: SHIPMENTS WILL BE POSITIONED ON THE TRAILER CONSISTENT WITH STATE WEIGHT LAWS. THE NUMBER OF UNITS MAY BE ADJUSTED TO FIT THE DIMENSIONS OF THE VEHICLE CONCERNED OR THE QUANTITY TO BE SHIPPED; HOWEVER, THE APPROVED METHODS CONTAINED HEREIN FOR FULL OR PARTIAL TRUCKLOAD MUST BE FOLLOWED FOR BLOCKING, BRACING, AND STAYING OF THIS ITEM.
- E. FOR DETAIL OF PLYWOOD SHEATHED CONTAINER SEE DRAWING NO. 8100050. CONTAINER DIMENSIONS - 235" LONG x 42 1/2" WIDE x 49" HIGH. GROSS WEIGHT - 5883 POUNDS (APPROX).
FOR DETAIL OF LUMBER SHEATHED CONTAINER SEE DRAWING NO. 8026321. CONTAINER DIMENSIONS - 239 1/2" LONG x 41 1/2" WIDE x 49" HIGH. GROSS WEIGHT - 6,456 POUNDS (APPROX).
- F. LADING WILL NOT BE SECURED BY CHAINS AND/OR LOAD BINDERS IN LIEU OF SPECIFIED DUNNAGE.
- G. IF EDGE PROTECTORS FOR 2" STRAPPING ARE NOT COMMERCIALY AVAILABLE THEY MAY BE FORMED FROM 10 (MIN) GAGE SHEET STEEL 9" LONG x 6" WIDE.
- H. ALL 2" STRAPPING APPLIED IN TWO (2) PIECES AND ALL 1 1/2" STRAPPING WILL BE SEALED WITH (2) SEALS AND TWO (2) CRIMPS PER SEAL.
- J. THIS ITEM IS AN ICC CLASS "B" EXPLOSIVE. PROCEDURES SHOWN HEREIN ARE APPLICABLE FOR THE SHIPMENT OF CONTAINERS WITH INERT LOADED, EMPTY OR PRACTICE MOTORS, AND OF EMPTY CONTAINERS.
- K. THE WORDS "ANTI-SKID PLATES" WILL BE STENCILED IN ONE INCH(1") LETTERS ON BOTH SIDES OF THE CONTAINERS TO SHOW THE LOCATIONS OF THESE PLATES.
- L. IF TRAILER STAKE POCKETS AND/OR ANCHOR DEVICES ARE NOT PROPERLY POSITIONED TO RECEIVE 2" STRAPPING AS SHOWN OR IF POCKETS AND/OR ANCHOR DEVICES ARE NOT EQUAL TO OR GREATER THAN STRENGTH OF TIE DOWN STRAPS, THE STRAP MAY BE APPLIED TO FORM A COMPLETE LOOP WHICH ENCOMPASSES BOTH LADING AND TRAILER FRAME AND/OR BED. CAUTION: AVOID TRAILER WHEELS, FIFTH WHEEL PLATE, CONTROLS AND OTHER APPURTENANTS. USE EDGE PROTECTORS ON ALL SHARP EDGES.

BILL OF MATERIAL		
LUMBER	LINEAL FEET	BOARD FEET
1" x 4"	12	4
2" x 4"	16	11
2" x 6"	82	82
4" x 4"	16	22
NAILS	NO. REQD	POUNDS
6d (2")	6	-
12d (3 1/2")	136	2 1/2
20d (4")	96	3 1/2
STRAPPING, STEEL, 1 1/2" x .035" - 204' REQD -	30 LBS	
STRAPPING, STEEL, 2" x .050" - 90' REQD -	30 LBS	
ANTI-SKID PLATES	12 REQD -	3 LBS
EDGE PROTECTORS	6 REQD -	2 LBS

LOAD AS SHOWN

ITEM	QUANTITY	WEIGHT
ROCKET MOTOR, LUMBER SHEATHED CONTAINER DUNNAGE	4	25,824 LBS (APPROX)
		368 LBS
TOTAL WEIGHT		26,192 LBS

LOADING & BRACING (TL & LTL) ON FLAT BED TRAILER OF ROCKET MOTOR, M3 SERIES, PACKED WITH IGNITER AND M7 MOTOR, IN LUMBER OR PLYWOOD SHEATHED CONTAINER, FOR THE 762MM ROCKET

DESIGNED BY <i>V.S.J.</i>	CHECKED BY <i>RHA/GWP</i>	DATE <i>DIW/DHW</i>	QUANTITY <i>Colman</i>
REVISIONS			APPROVED BY <i>John Taylor</i>
5	25 JULY 62	<i>GWP</i>	<i>Colman W. Reid</i>
			APPROVED BY ORDER OF THE CHIEF OF ORDNANCE <i>Colman W. Reid</i>
ORDNANCE CORPS U.S.A.			
23 JANUARY 1956			
CLASS	DIVISION	DRAWING	FILE
19	48	5128	GM 11A28

MATERIAL SPECIFICATIONS

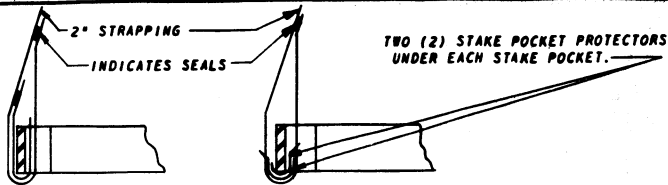
LUMBER: SEE PARAGRAPH 8400, ORDM 3-4, VOL 3.

NAILS: COMMON, CEMENT COATED, FED SPEC FF-N-105.
ALT: ANNULAR-RING TYPE NAIL OF SAME SIZE.

STRAPPING, STEEL: TYPE 1, CLASS "A" OR "C", FED SPEC QQ-S-781.
FOR FSN SEE SB-38-100.

ANTI-SKID PLATES: SIGNODE NO. 1 OR EQUAL.

DO NOT SCALE

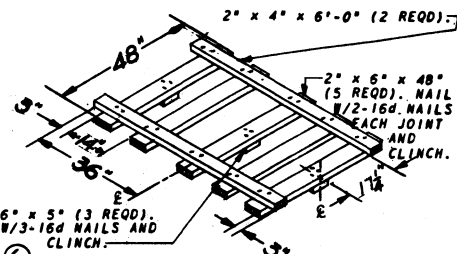


DETAIL "A"

DETAIL "B"

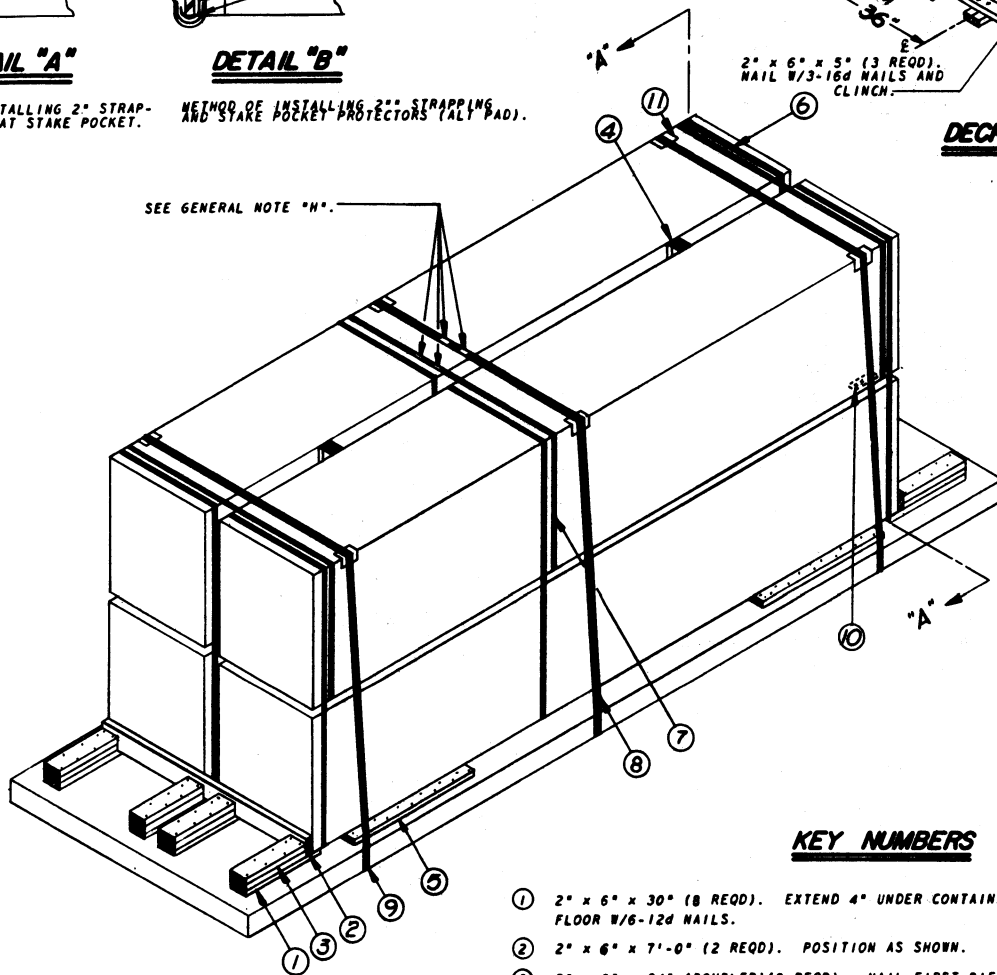
METHOD OF INSTALLING 2" STRAPPING AND PAD AT STAKE POCKET.

METHOD OF INSTALLING 2" STRAPPING AND STAKE POCKET PROTECTORS (ALT. PAD).



DECKING ASSEMBLY

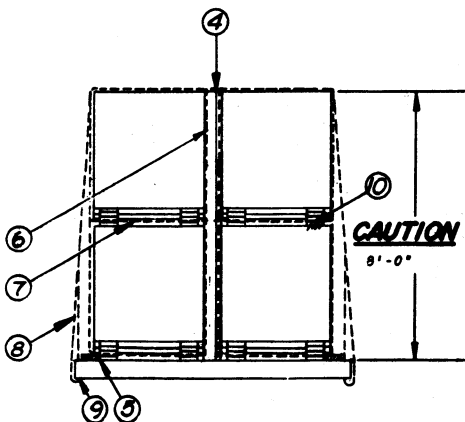
(2 REQD)



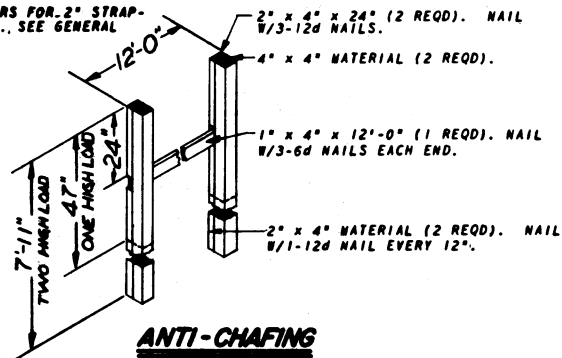
ISOMETRIC VIEW

KEY NUMBERS

- ① 2" x 6" x 30" (8 REQD.). EXTEND 4" UNDER CONTAINER AND NAIL TO TRAILER FLOOR W/6-12d NAILS.
- ② 2" x 6" x 7'-0" (2 REQD.). POSITION AS SHOWN.
- ③ 2" x 6" x 24" (DOUBLED) (8 REQD.). NAIL FIRST PIECE TO ① W/6-20d NAILS. NAIL SECOND PIECE TO FIRST IN LIKE MANNER. TOENAIL SECOND PIECE TO ② W/2-12d NAILS.
- ④ ANTI-CHAFING BOARD (1 REQD.). SEE DETAIL.
- ⑤ 2" x 6" x 48" (4 REQD.). NAIL TO TRAILER FLOOR W/12-12d NAILS.
- ⑥ STEEL STRAPPING, 1 1/2" x .035" x 23'-0" (6 REQD.).
- ⑦ STEEL STRAPPING, 1 1/2" x .035" x 22'-0" (3 REQD.).
- ⑧ STEEL STRAPPING, 2" x .050" x 27'-0" (3 REQD.).
- ⑨ PAD, 2" x .050" STRAP 18" LONG (6 REQD.). POSITION UNDER SEAL TO ⑧. SEE DETAIL "A".
ALT: SIGNODE NR. 1 STAKE POCKET PROTECTORS (12 REQD.). TWO (2) USED UNDER EACH STAKE POCKET WITH ⑧. SEE DETAIL "B".
- ⑩ ANTI-SKID PLATES (12 REQD.). POSITION UNDER EACH SKID OF CONTAINERS IN SECOND LAYER. (6 REQD PER CONTAINER). SEE GENERAL NOTE "K".
- ⑪ EDGE PROTECTORS FOR 2" STRAPPING (8 REQD.). SEE GENERAL NOTE "6".



SECTION "A-A"



ANTI-CHAFING BOARD

(1 REQD)