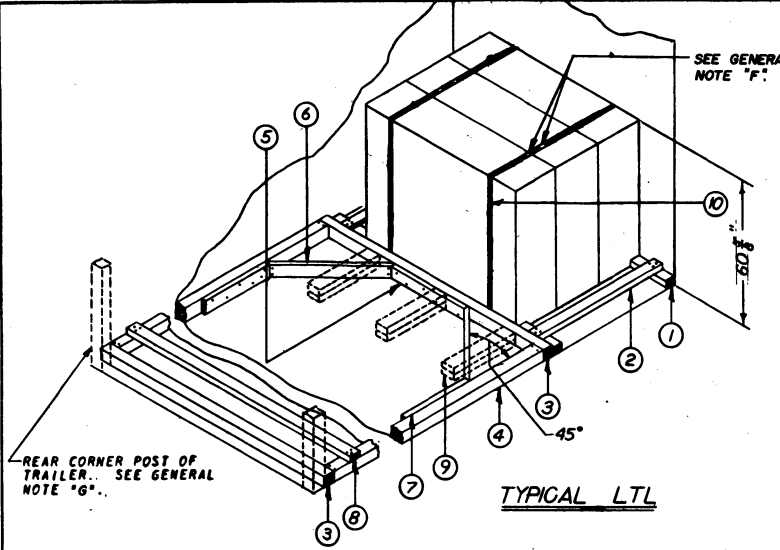


APPROVED
 BUREAU OF EXPLOSIVES
A. J. Kraasnick
 DATE 3/5/62 INSPECTOR



KEY NUMBERS (LTL)

- ① 2" x 4" x CUT TO FIT (4 REQD).. POSITION AS SHOWN.
- ② 2" x 4" x 49 1/2" (2 REQD).. NAIL TO ① W/3-10d NAILS EACH END..
- ③ 4" x 4" x TRAILER WIDTH (2 REQD).. POSITION AS SHOWN..
- ④ 4" x 4" x CUT TO FIT (2 REQD).. TOENAIL TO ③ W/2-16d NAILS EACH END..
- ⑤ 2" x 4" x 30" (1 REQD).. NAIL TO ⑤ W/6-12d NAILS..
- ⑥ 2" x 4" x CUT TO FIT (2 REQD).. DOUBLE BEVEL EACH END AND POSITION AT 45°. TOENAIL TO ③ AND ④ W/2-16d NAILS EACH END..
- ⑦ 2" x 4" x 24" (2 REQD).. NAIL TO ④ W/6-12d NAILS..
- ⑧ 2" x 4" x TRAILER WIDTH (MIN 1 REQD).. POSITION EVERY 7'-0".. NAIL TO ④ W/3-12d NAIL EACH END..
- ⑨ 2" x 4" x 24" (DOUBLED)(3 REQD).. NAIL FIRST PIECE TO TRAILER FLOOR W/5-12d NAILS.. NAIL SECOND PIECE TO FIRST IN LIKE MANNER.. TOENAIL TOP PIECE TO ③ W/2-12d NAILS.. FOR WOOD OR WOOD AND METAL FLOOR ONLY.. OMIT ONE PIECE ③ AND PIECES ④ THRU ⑧..
- ⑩ STEEL STRAPPING, 1 1/2" x .035" x 18'-0" (2 REQD).. PRE-POSITION.. CONTAINERS WILL BE BUNDLED IN UNITS OF MAX-3 AND MIN-2.

GENERAL NOTES

- A. LOAD AS SHOWN IS BASED ON VAN TYPE TRAILER 30'-0" LONG x 7'-6" WIDE (INSIDE DIMENSIONS) WITH WOOD AND METAL FLOOR. SEE GENERAL NOTE "J".
- B. GROSS WEIGHT AND AXLE DISTRIBUTION OF WEIGHT WILL BE IN ACCORDANCE WITH PARAGRAPH 8,346.4, ORDN 3-4, VOL 3..
- C. SELECTION OF VEHICLES TO BE USED TO TRANSPORT GUIDED MISSILE AMMUNITION AND/OR COMPONENTS THEREOF MUST COMPLY WITH AR 55-355, CHAPTER 213, FOR EXPLOSIVES OR OTHER DANGEROUS ARTICLES, IN FULL..
- D. NOTICE: SHIPMENT WILL BE POSITIONED IN THE TRAILER CONSISTENT WITH STATE WEIGHT LAWS. THE NUMBER OF UNITS MAY BE ADJUSTED TO FIT THE DIMENSIONS OF THE VEHICLE CONCERNED OF THE QUANTITY TO BE SHIPPED; HOWEVER, THE APPROVED METHODS CONTAINED HEREIN FOR FULL OR PARTIAL TRUCKLOAD MUST BE FOLLOWED FOR BLOCKING, BRACING, AND STAYING OF THIS ITEM..
- E. FOR DETAIL OF CONTAINER SEE DRAWING NO. 8025313.. CONTAINER DIMENSIONS - 60 1/2" LONG x 16-11/16" WIDE x 49-13/16" HIGH.. GROSS WEIGHT - 345 LBS (APPROX)..
- F. ALL 1 1/2" STRAPPING WILL BE SEALED WITH TWO (2) SEALS AND TWO (2) CRIMPS PER SEAL..
- G. FOR TRAILERS NOT EQUIPPED WITH REAR CORNER POSTS, REAR BLOCKING MUST CONTACT CLOSED DOORS..
- H. PROCEDURES SHOWN HEREIN ARE APPLICABLE FOR THE SHIPMENT OF EMPTY CONTAINERS..
- J. SPECIFIED BLOCKING IS ADEQUATE TO RETAIN FULL TRAILER LOADS IN TRAILERS 40' LONG OR GREATER.

BILL OF MATERIAL (TL)		
LUMBER	LINEAL FEET	BOARD FEET
1" x 4"	8	3
2" x 4"	15	10
4" x 4"	15	20
NAILS	NO. REQD	POUNDS
12d (3 1/4")	16	1
STEEL STRAPPING, 1-1/4" x .035" - 27' REQD -		4 LBS

LOAD AS SHOWN		
ITEM	QUANTITY	WEIGHT
CONTAINER	35	12,075 LBS (APPROX)
DUNNAGE		87 LBS
TOTAL WEIGHT		12,162 LBS

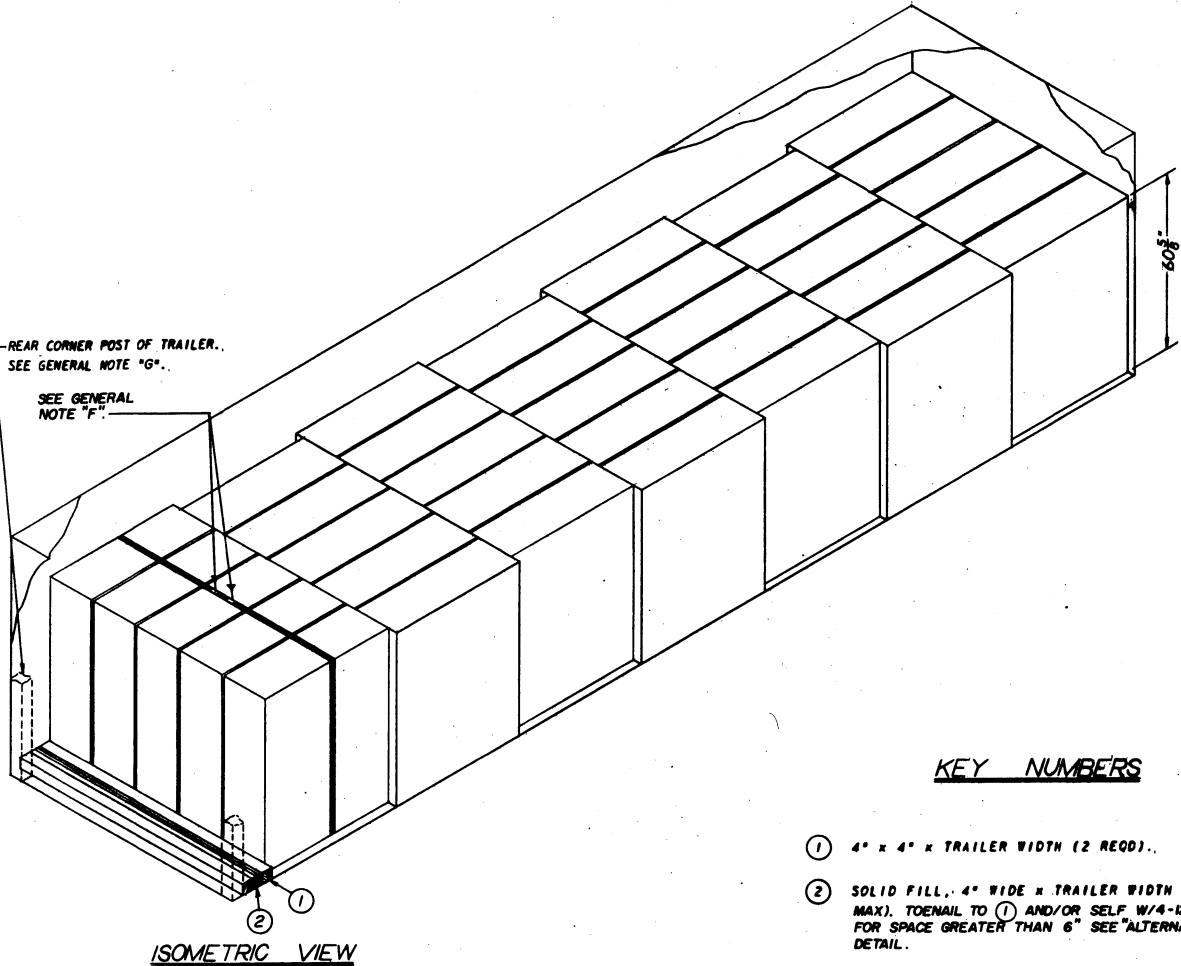
MATERIAL SPECIFICATIONS

LUMBER: SEE PARAGRAPH 8,400, ORDN 3-4, VOL 3..
 NAILS: COMMON, CEMENT COATED, FED SPEC FF-N-105..
 ALT: ANNULAR-RING TYPE NAIL OF SAME SIZE..
 STRAPPING, STEEL: TYPE 1, CLASS "A" OR "C", FED SPEC QQ-B-791.. FOR PSN SEE 58-30-100..

DO NOT SCALE

LOADING & BRACING (TL & LTL) IN VAN TYPE TRAILER OF FIN ASSEMBLY, M136 SERIES, PACKED FOUR PER WOODEN CONTAINER, FOR THE 762MM ROCKET

DESIGNED BY K.S.J.	THICKER	ENGINEER DIW/JB	SUBMITTED
CHECKED BY GWP/RHA	CHECKER AN	DRAWN	Ralph F. Meade COLONEL, ORDN CORPS U.S.A.
REVISIONS			REMARKS John Taylor ORDN CORPS U.S.A.
3	2 NOV 61	Andrew W. Blair	APPROVED BY ORDER OF THE CHIEF OF ORDNANCE Andrew W. Blair ORDN CORPS U.S.A.
ORDNANCE CORPS U.S.A.			
15 NOVEMBER 1954			
CLASS	DIVISION	DRAWING	FILE
19	48	5110	GM11A10



ISOMETRIC VIEW

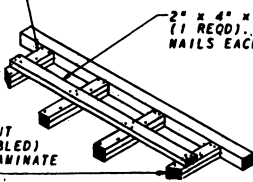
KEY NUMBERS

- ① 4" x 4" x TRAILER WIDTH (2 REQD).
- ② SOLID FILL, 4" WIDE x TRAILER WIDTH MATERIAL (AS REQD) (6" MAX). TOENAIL TO ① AND/OR SELF W/4-12d NAILS EACH JOINT. FOR SPACE GREATER THAN 6" SEE "ALTERNATIVE REAR BLOCKING" DETAIL.
- ③ STEEL STRAPPING, 1-1/4" x .035" x 27'-0" (1 REQD). PREPOSITION. PC ③ WILL ALSO BE REQUIRED AROUND FRONT STACK WHEN ROUND FRONT TRAILERS "FORWARD BLOCKING" IS USED.

TOENAIL W/2-12d NAILS EACH JOINT.

2" x 4" x CUT TO FIT (1 REQD). NAIL W/3-10d NAILS EACH JOINT.

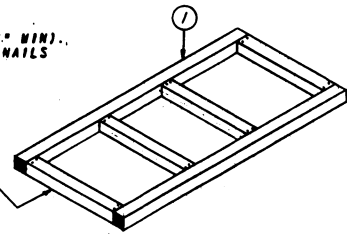
2" x 4" x CUT TO FIT (DOUBLED) (4 REQD). LAMINATE W/10d NAILS.



FORWARD BLOCKING

(FOR ROUND FRONT TRAILERS)

4" x 4" x CUT TO FIT (6" MIN). TOENAIL TO ① W/2-16d NAILS EACH END.



ALTERNATIVE REAR BLOCKING

TO BE USED WHEN EXCESS SPACE AT REAR OF TRAILER IS GREATER THAN 6".